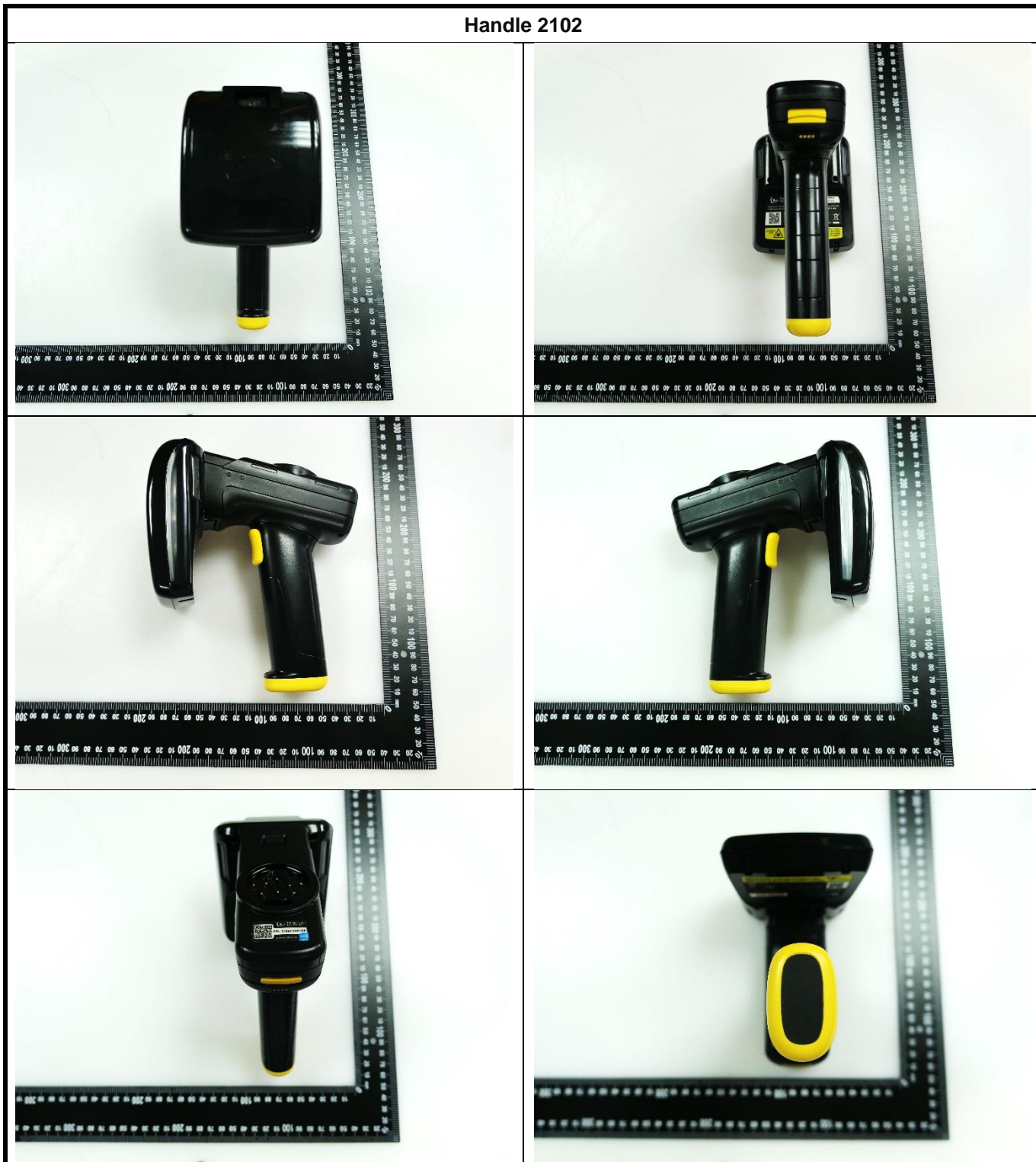
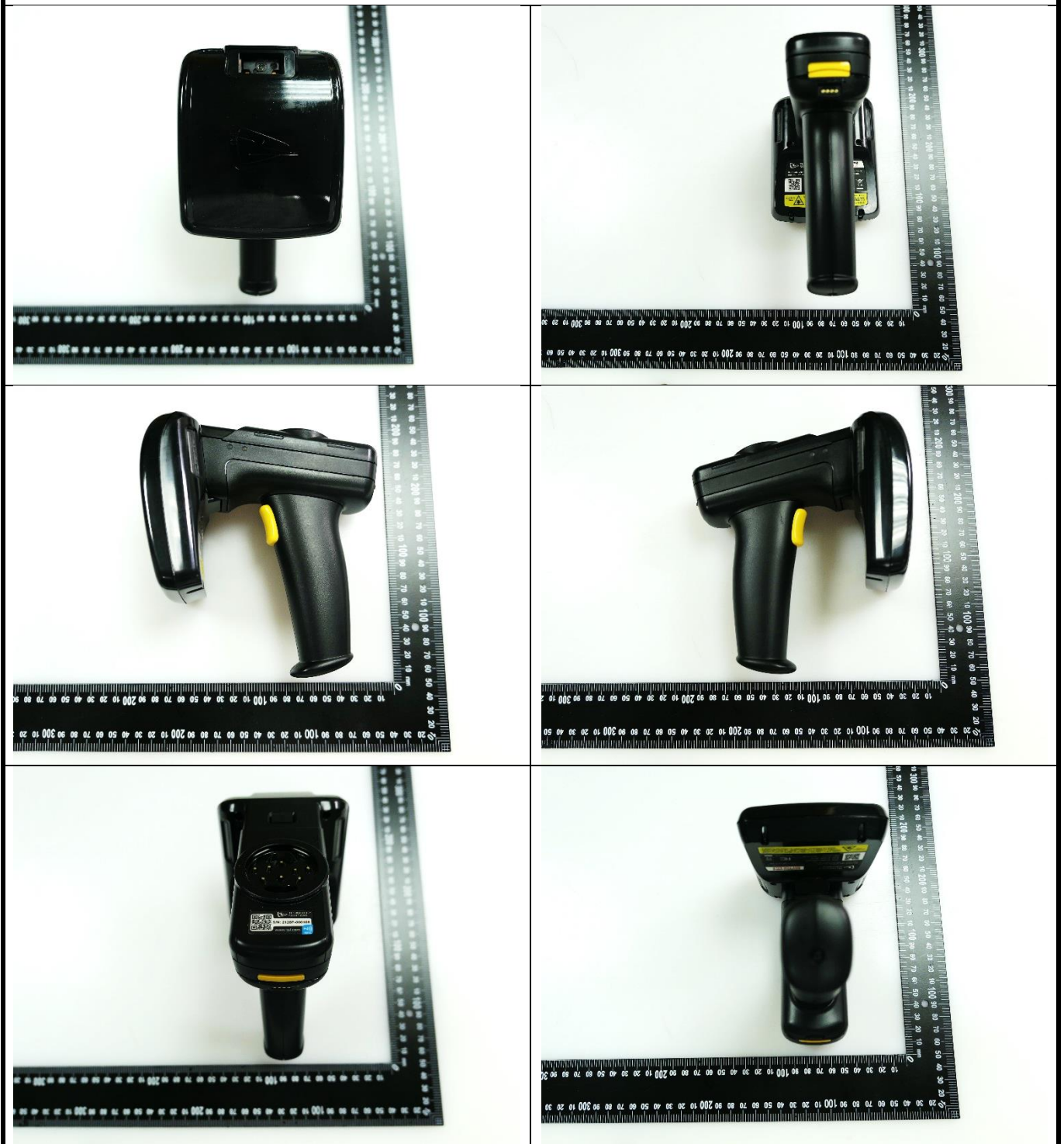


<Photographs of EUT>

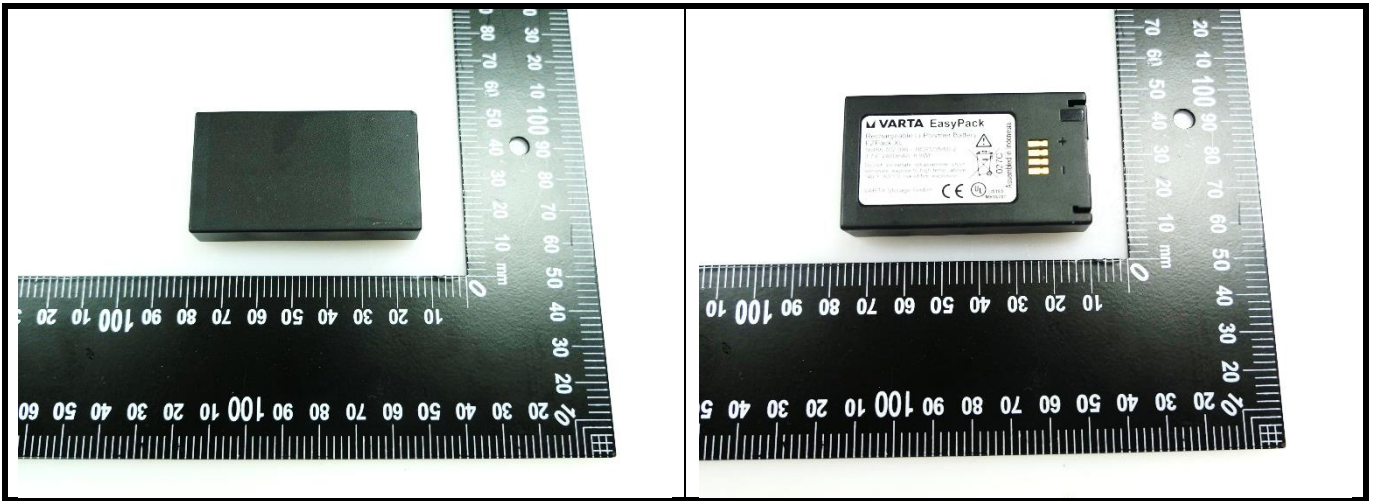
Handle 2102



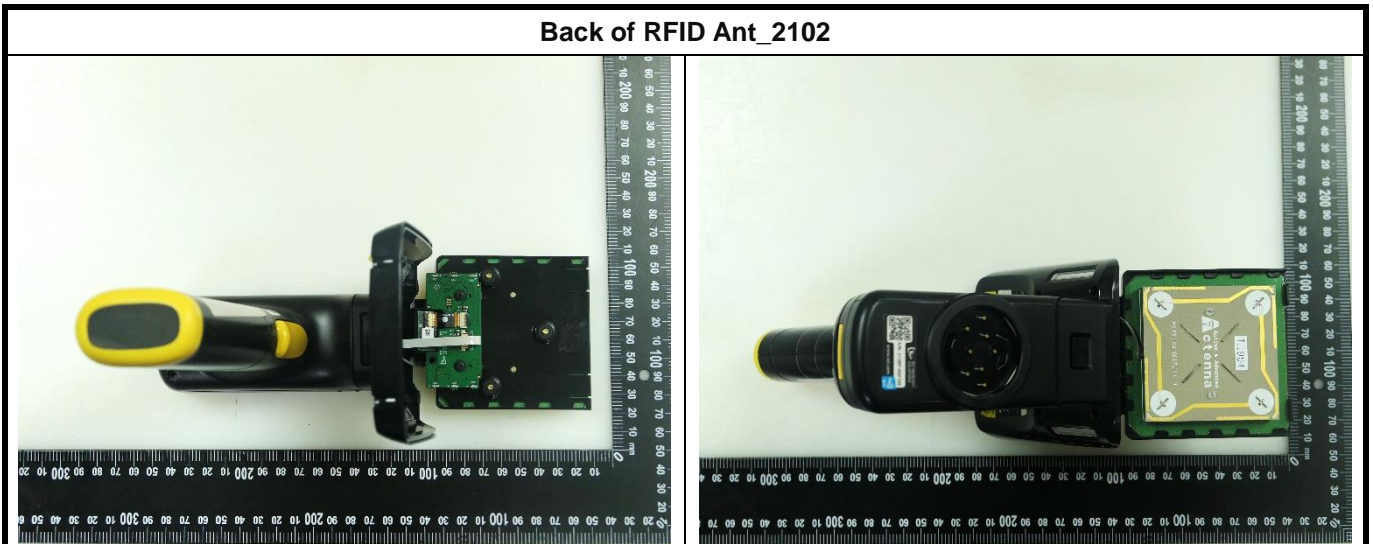
Handle 2128



FCC SAR Test Report



Back of RFID Ant_2102



FCC SAR Test Report

<Antenna Location>
Handle 2102



The separation distance for antenna to edge:

Antenna	BT to Hand Side (mm)	Finger to EUT's RFID ANT Side (mm)	Finger to EUT's RFID case side (mm)	Cellphone to Hand (mm)
RFID	--	55	40	60
BT	40	--	--	--

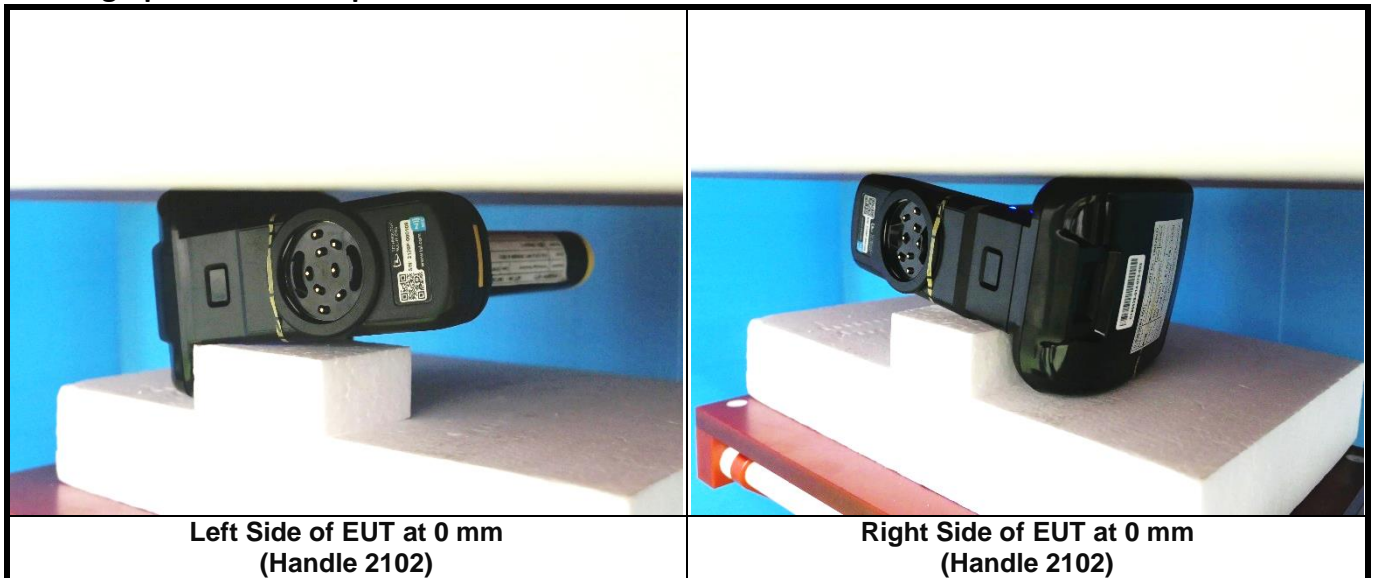
FCC SAR Test Report

Handle 2128



Antenna	BT to Hand Side (mm)	Finger to EUT's RFID ANT Side (mm)	Finger to EUT's RFID case side (mm)	Cellphone to Hand (mm)
RFID	--	55	40	60
BT	40	--	--	--

<Photographs of SAR Setup>



Left Side of EUT at 0 mm (Handle 2102)

Right Side of EUT at 0 mm (Handle 2102)

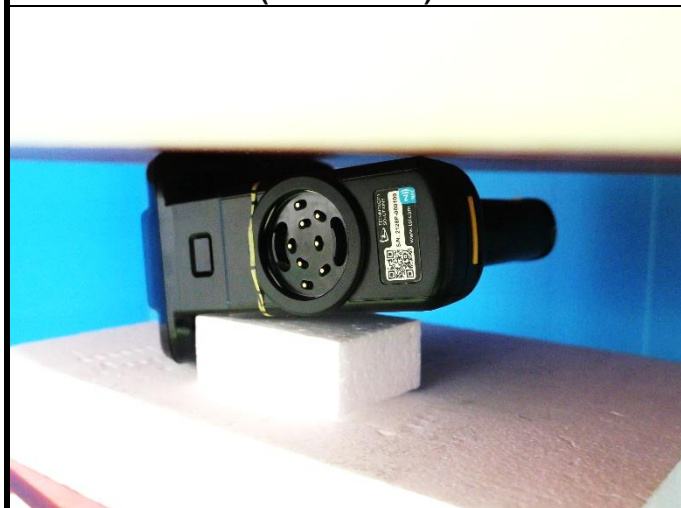
FCC SAR Test Report



**Top Side of EUT at 0 mm
(Handle 2102)**



**Bottom Side of EUT at 0 mm
(Handle 2102)**



**Left Side of EUT at 0 mm
(Handle 2128-TGR)**



**Front Face of EUT at 40mm
(Handle 2102)**



**Back of RFID Ant at 0mm
(Handle 2102)**

