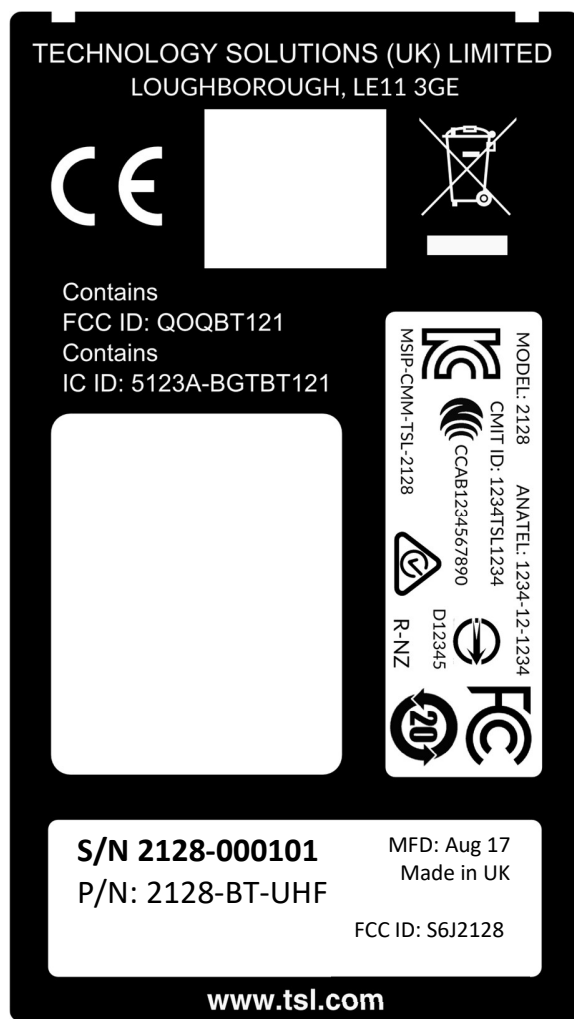


Label Design

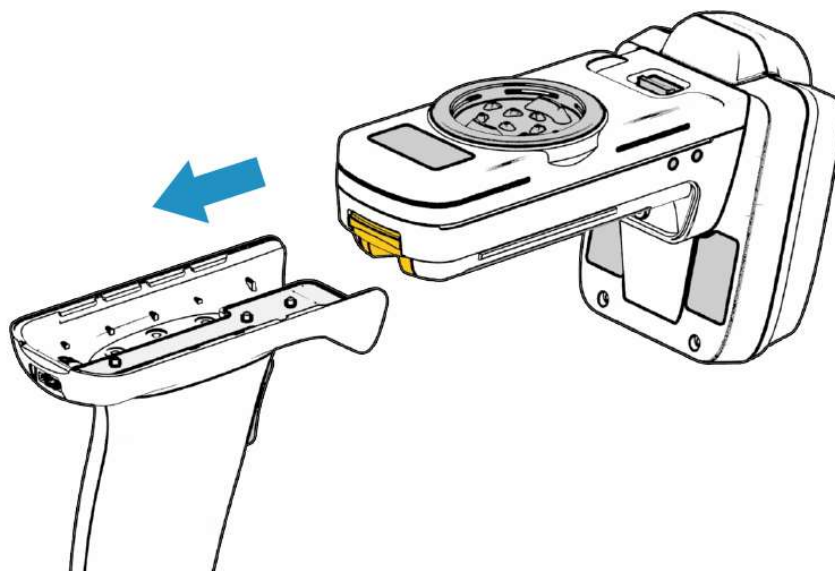
The ID label contains the reader serial number, the reader part number, the date of manufacture, the country of manufacture and the FCC ID. An example of this label design is shown below:



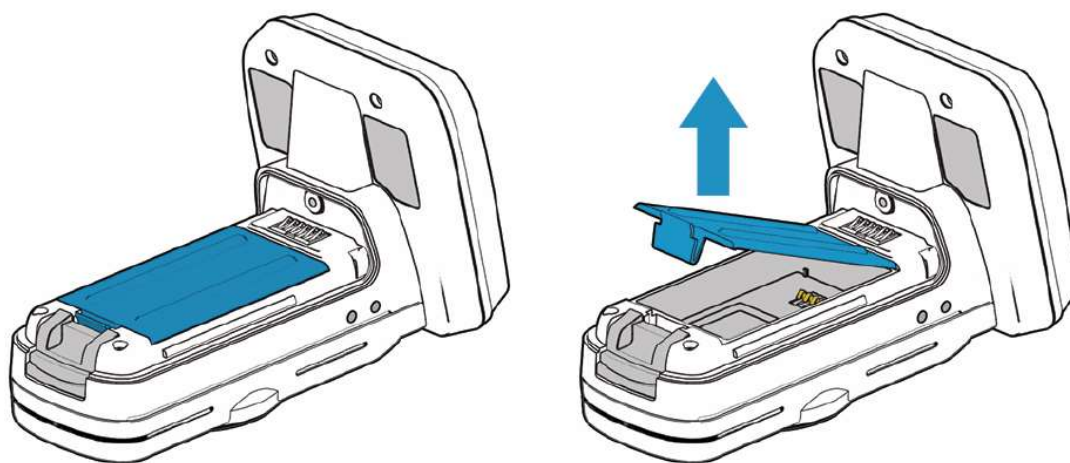
This label has dimensions of 36x65mm, and is made from Polyester Autotex F207 label secured to the reader body with 3M 468 adhesive. A paper label containing the serialised information specific to each unit is fitted under this label and is visible through a transparent window.

Label Location

The FCC ID label is located underneath the battery, which can be accessed by removing the trigger handle and then the battery:



Remove Trigger Handle



Remove battery cover Handle

TECHNOLOGY SOLUTIONS UK LTD

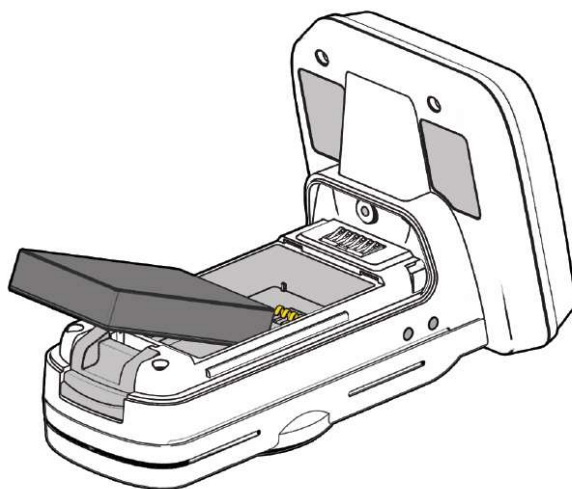
Company No. 02777518
VAT No. GB 620030611

Suite A
Loughborough Technology Centre
Loughborough
Leicestershire
LE11 3GE
UNITED KINGDOM



Tel: +44 1509 238248
Fax: +44 1509 220020
enquiries@tsl.com
www.tsl.com

design - develop - manufacture



Remove battery



TECHNOLOGY SOLUTIONS UK LTD

Company No. 02777518
VAT No. GB 620030611

Suite A
Loughborough Technology Centre
Loughborough
Leicestershire
LE11 3GE
UNITED KINGDOM



Tel: +44 1509 238248
Fax: +44 1509 220020
enquiries@tsl.com
www.tsl.com

design - develop - manufacture