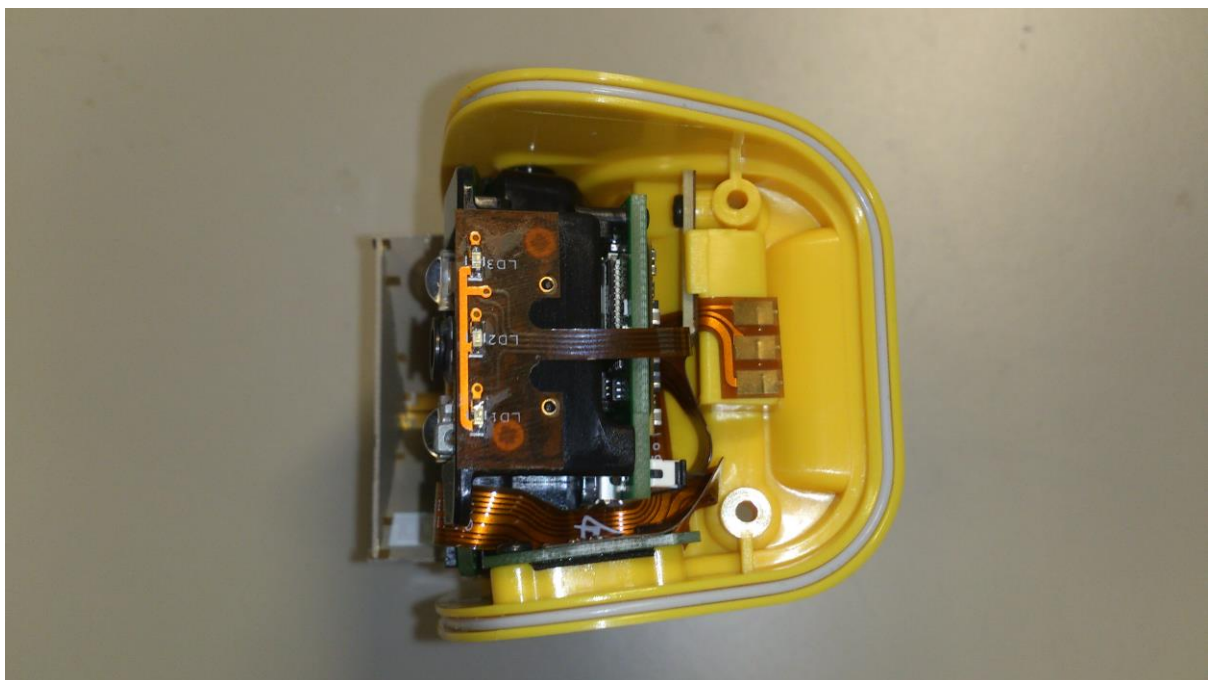
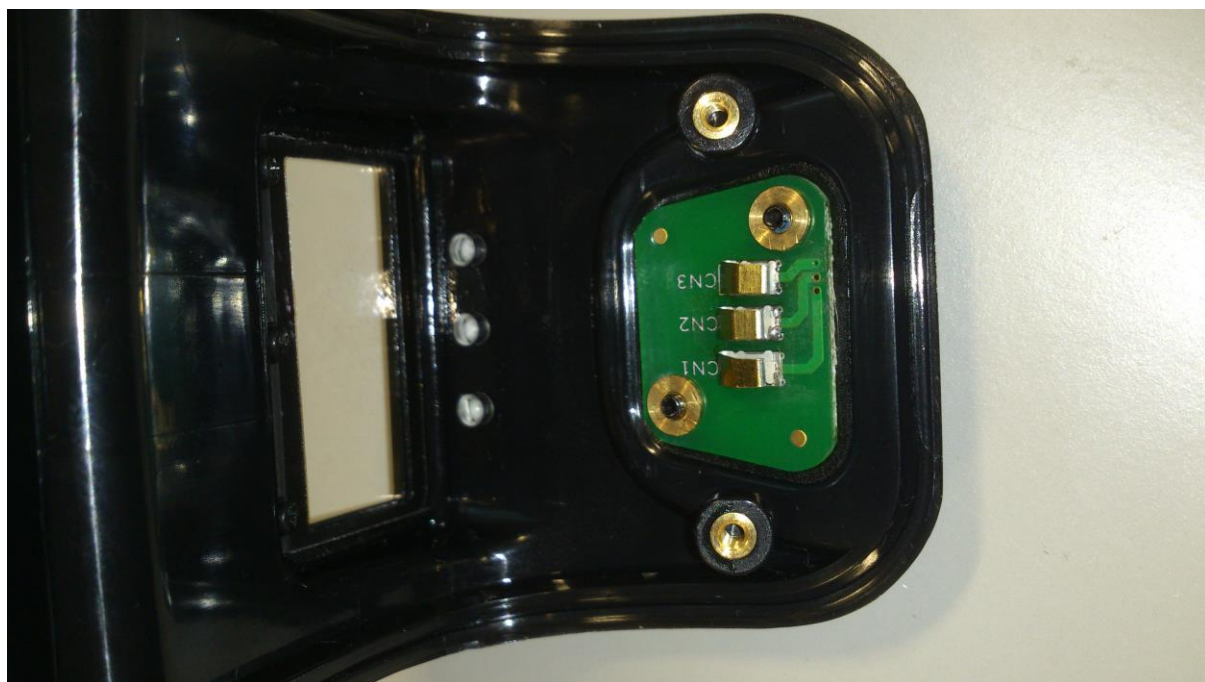


# 1153 Internal photos

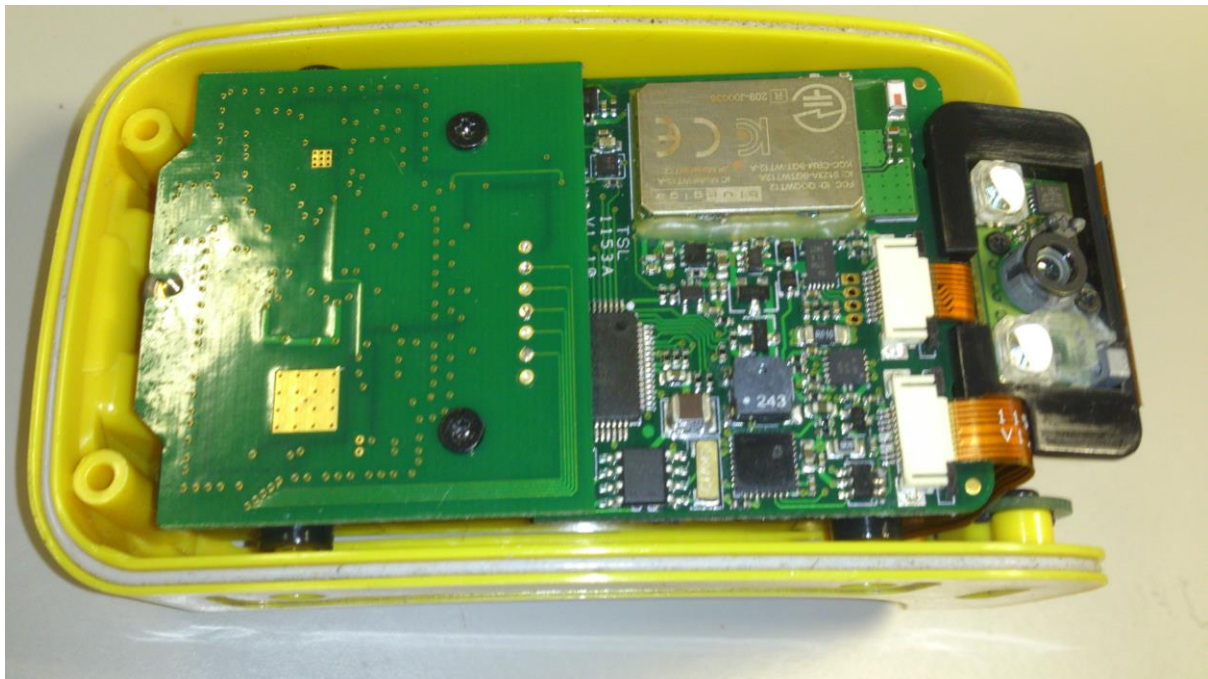
---

## Overall internal views





**RFID Antenna removed**

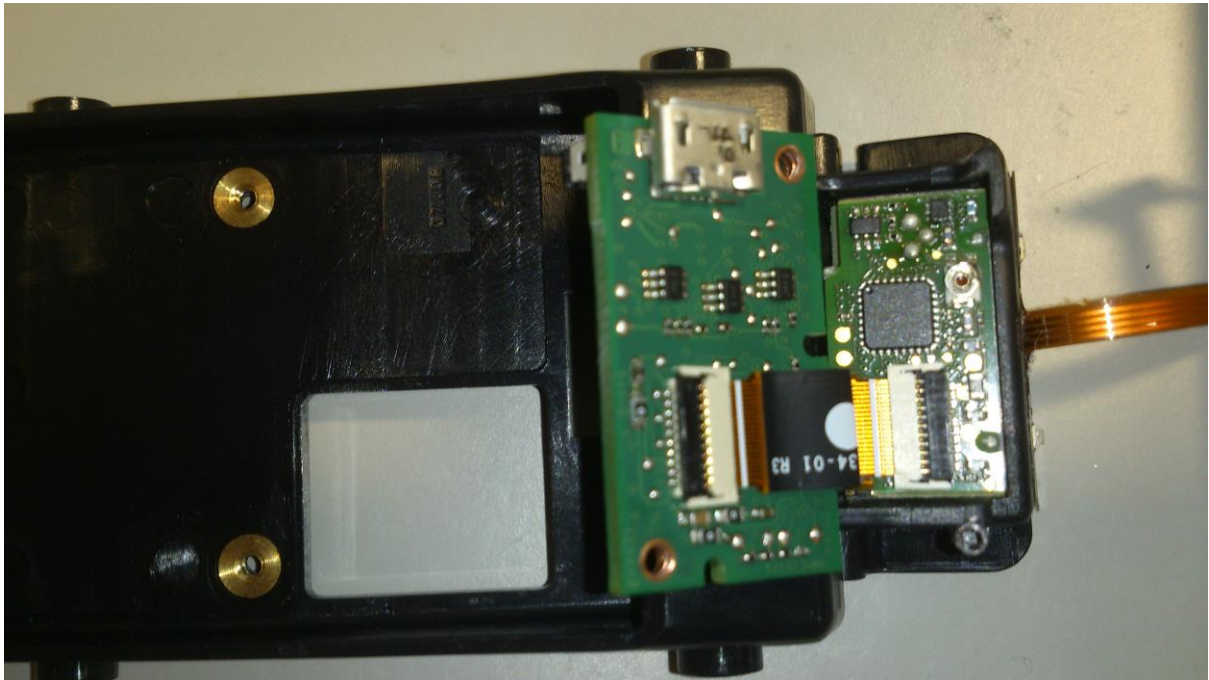


**RFID board removed, chassis moved to show flex circuits**

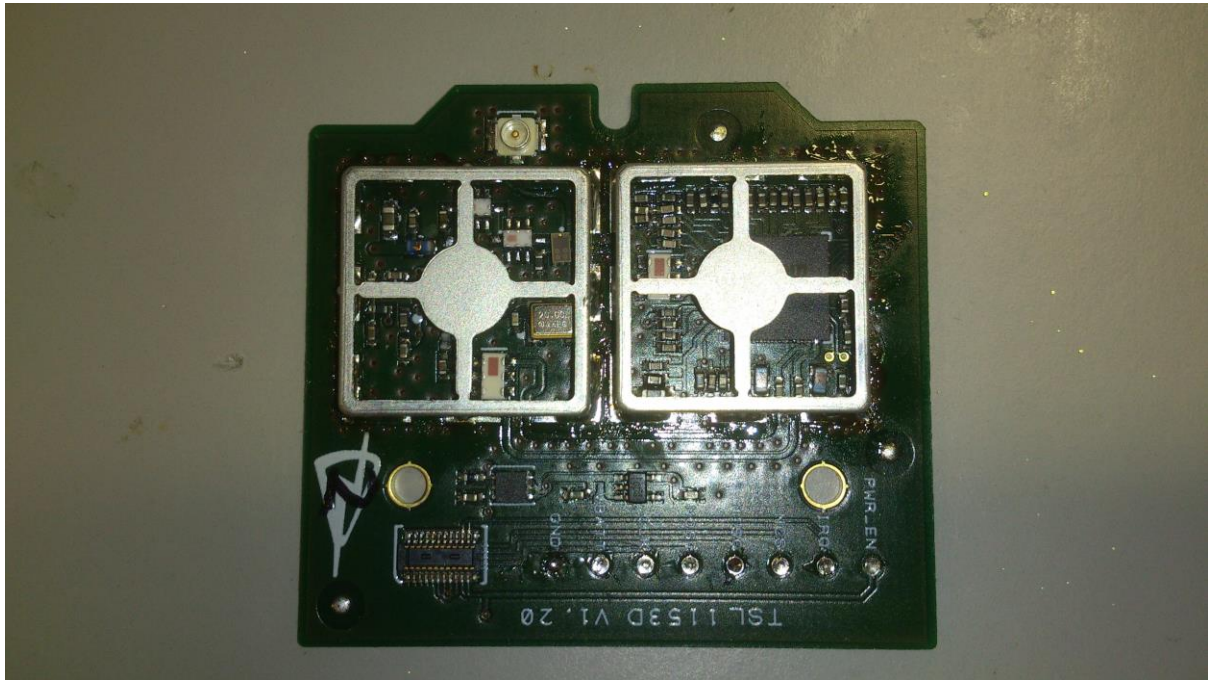




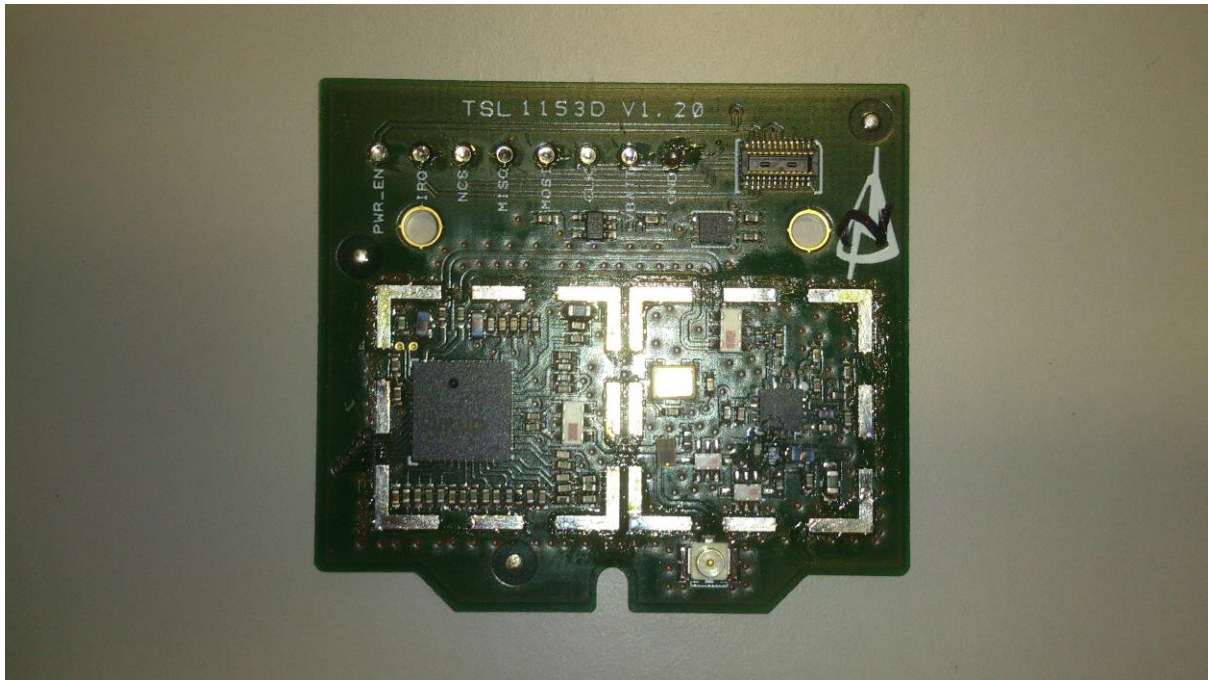
## Barcode engine and decoder board



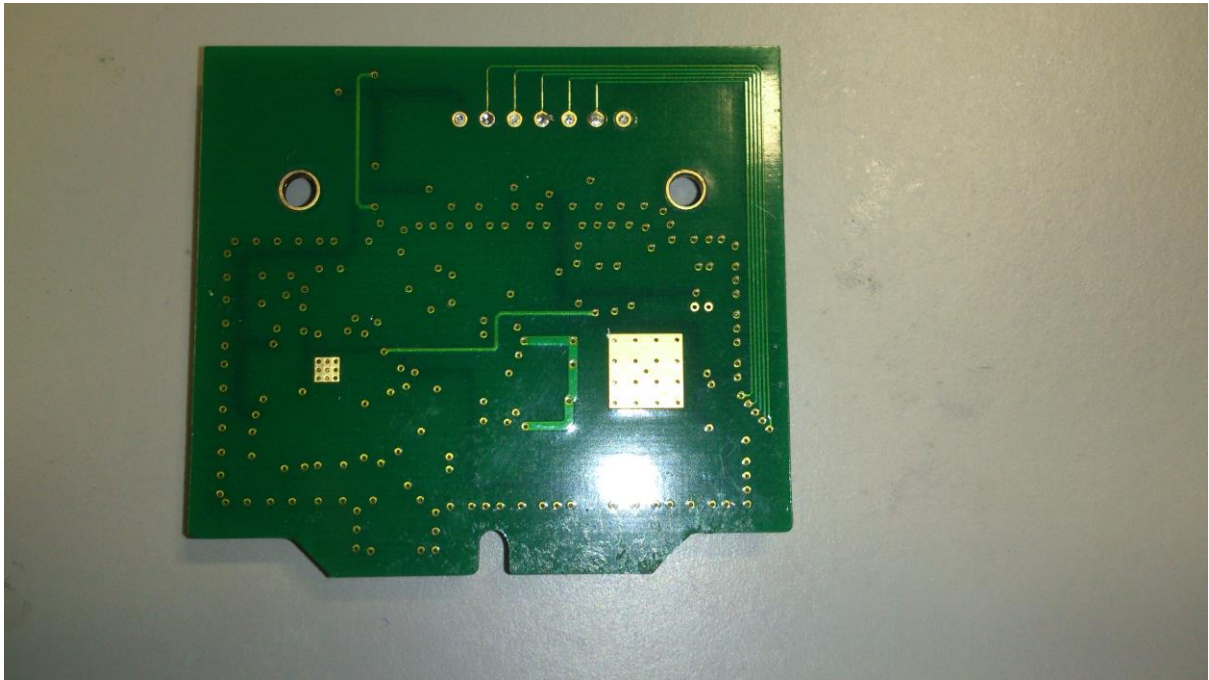
RF board top view



RF board top view with screening cans removed

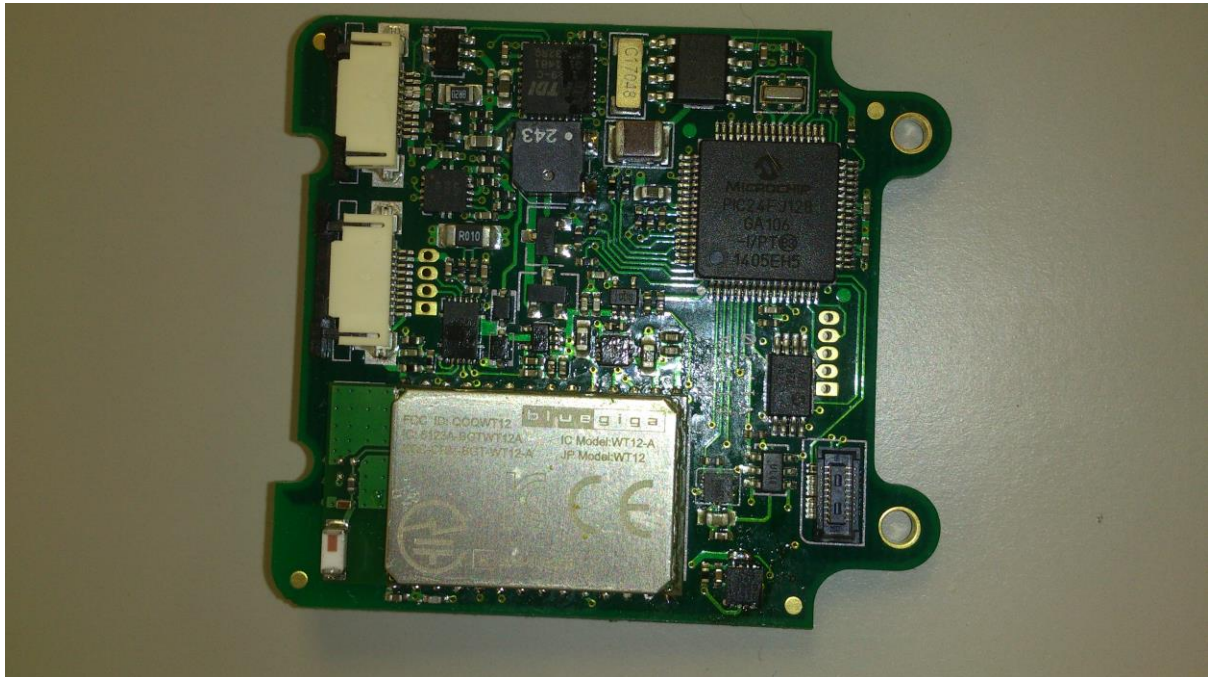


**RF Board rear view**





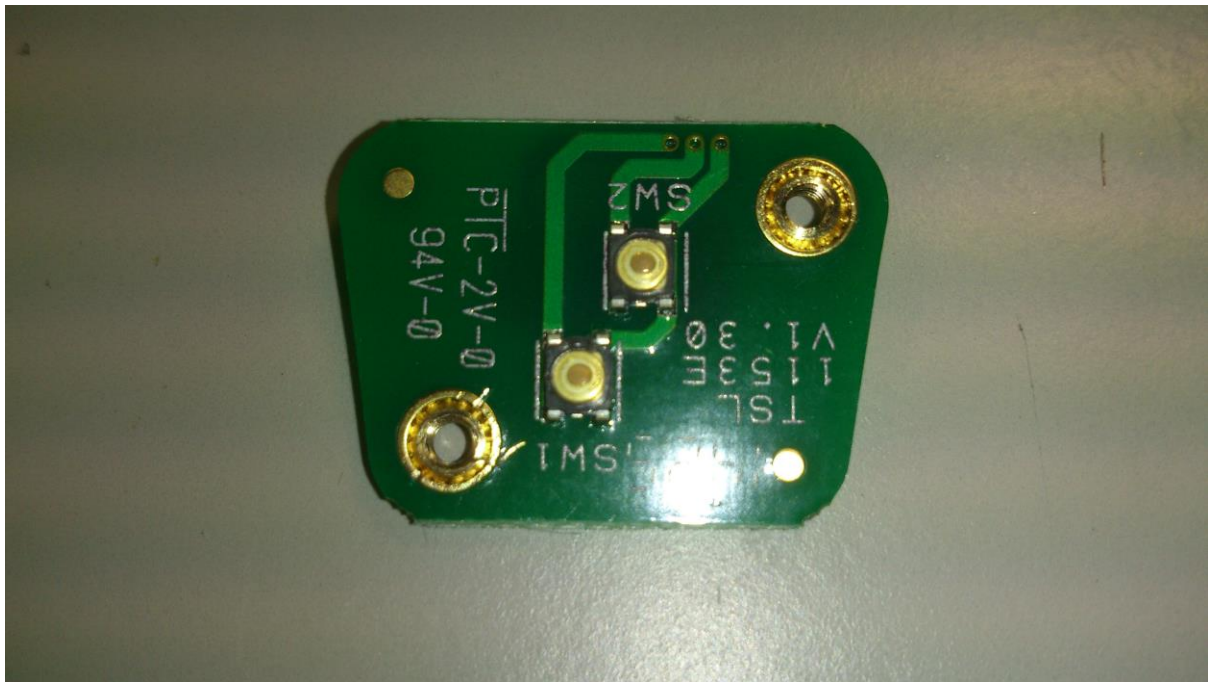
Digital board top view



Digital board rear view



Switch board top view



Switch board rear view

