

User Manual



Model: V50 Pro

1. Key Feature

Video Resolution: 4K@30FPS, 1080P@60FPS, 720P@120FPS

Image Resolution: 14MP

2" TFT touch panel

3.8V/1100mAh removable Lithium-ion battery

Support Wi-Fi connection, range up to 20 meters

Customized App: Android & iOS

Support 2.4G RF Remote Controller

Support EIS on 4K@30fps with good quality

Support Micro SD Card up to 32GB

Several Metal inner cabinets to spread heat

Bundle with waterproof case can support underwater 45 meters

2. Accessories in standard package

Camera x 1

Waterproof case x 1

Remote controller x 1

Quick release mount x 1

Flat mount x 1

Curved mount x 1

Knuckle x 1

Spanner x 1

Lock bolt x 2

3M adhesive for curved x 1

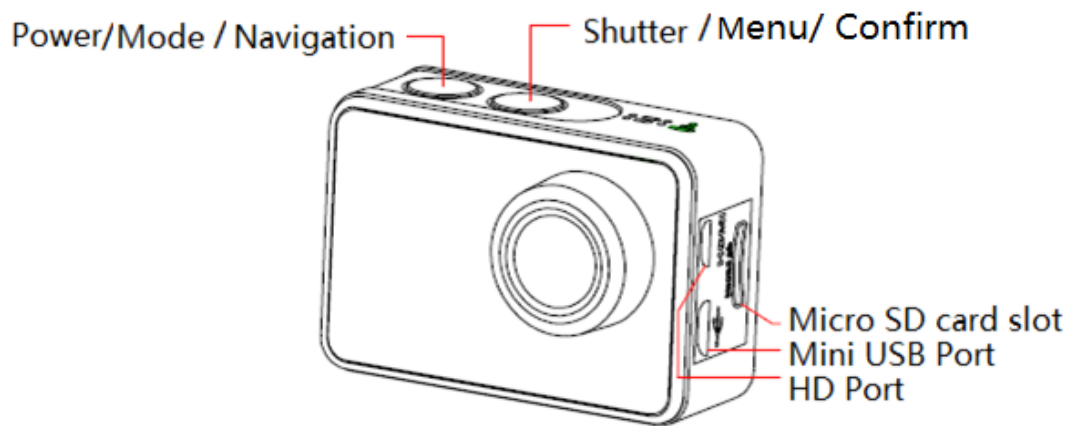
3M adhesive for flat mount x 1

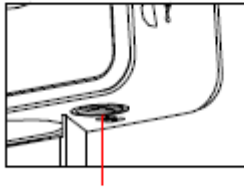
Portable case x 1

USB cable x 1



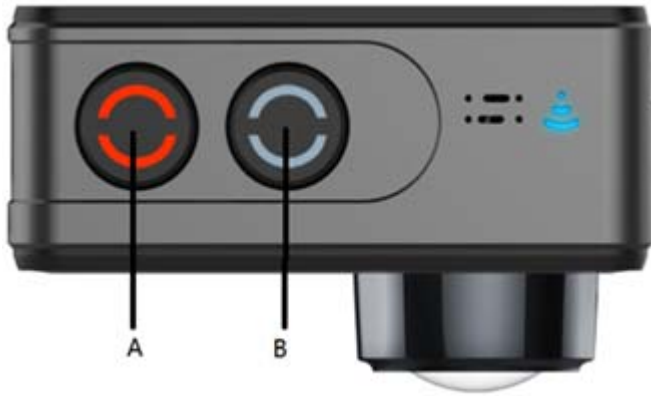
3. Camera Diagram





Tripod Hole (Bottom)

4. Using Your Camera



Indicators



4.1 Power on & Power off the camera

Turn on

Long press Power button (A) for 3 seconds to power on, indicator A turns blue.

Turn off

Long press Power button (A) for 3 seconds to power off, indicator A blinks and then turn off.

4.2 Insert a Memory Card

Insert a Micro SD card into the SD card slot.

NOTE:

1. We suggest using Class 10 (or higher) Micro SD card for Smooth shooting purpose. Lower Class of the Micro SD Card may cause the video blur or unavailable.
2. There is only one correct direction to insert the SD Card into the slot. Do not force the card into the card slot as it may damage both the SD Card and camera.
3. A new Micro SD Card should be formatted before using.

4.3 Charge the battery

Before using the **V50** Pro for the first time, please fully charge the battery . Procedure:

1. Connect the **V50** Pro with a charger or device by Mini USB cable.
2. Charging Indicator B turns red during charging.
3. A complete flat battery takes around **2.5** hours to get fully charged.
The red indicator turns off after the battery fully charged.
4. When the battery is going to run flat, the red indicator B blinks twice a second.
5. Some functions such as Wi-Fi is unavailable if the battery is in low condition.

4.4 Insert camera into waterproof case

1. Ensure the case is dry and clean.
2. Insert the camera and make sure the lens fits neatly in the lens cavity.
3. Close the locking clamps.
4. **V50** Pro can be mounted using the accessories provided.

4.5 Shoot Video

Press Shutter button(B) when powered on, LED B turns green and keep blinking twice a second; Press again to stop, and LED B light turns off.

4.6 Shoot a Single Picture

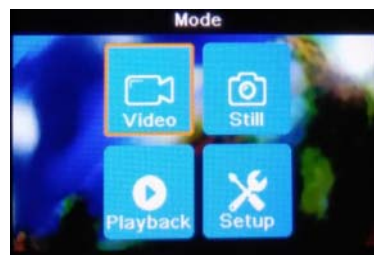
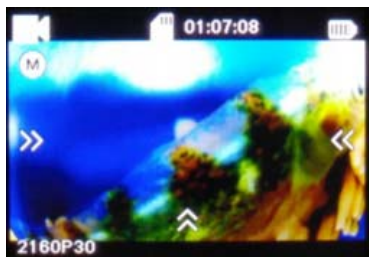
Press Shutter button(B) once to shoot a single picture, LED B flashes green.

4.7 Mode Shift

1. Main mode shift (A)

When powered on, short press on button A to shift among Video Recording - Photo Shot - Playback- Setting, pause to confirm on current mode.

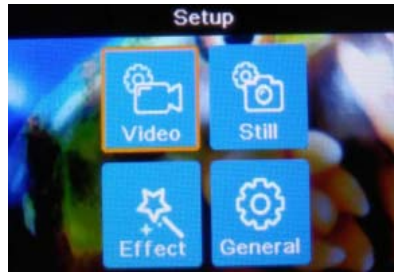
You can easily access this menu with touch operation by swiping left.



2. Main mode shift (B)

When powered on, long press on button B for 3 seconds to enter Setup menu:

Video - **Still** - Effect - General.



5. Setup your camera

Long press on Button B to enter Setup "Video - Still - Effect - General", press Button A to navigate and press Button B to confirm. Long press on Button B again will exit.

5.1 Video SETUP

Press Power Button (A) once to navigate, press Shutter Button (B) to Enter/Confirm selection.



Video Resolution

To set the video resolution.

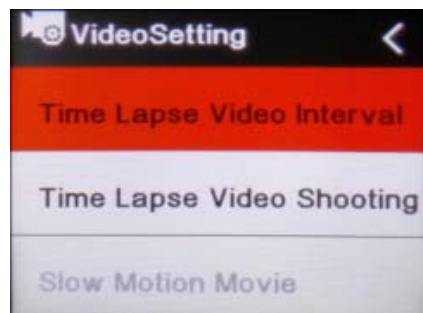
Image Stabilization

To set the digital image stabilization, can not be activated on 1280x 720p@120fps.

Video File Length

This allows to record continuously using footage intervals of Unlimited/1/5mins.

The camera will delete the oldest loop recording file and replace with the latest recording when the Micro SD is full.



Time Lapse Video Interval

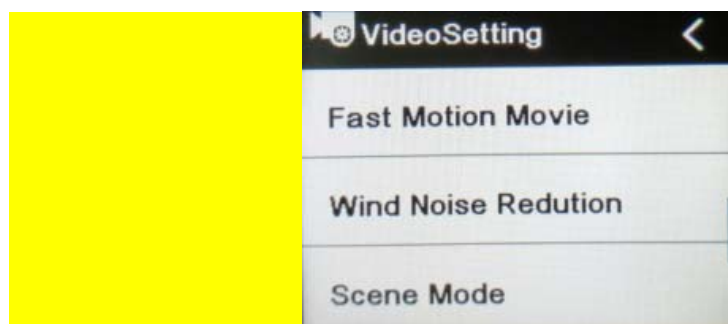
This allows to record one frame at the set time interval of Off/ 1 Sec/3 Sec/5 Sec/10 Sec/30 Sec/1 Min. The final video file in the currently selected video format will be stored.

Time Lapse Video Shooting

To determine the video Timelapse duration of "Unlimited/5 Min/ 10 Min/ 15 Min/ 20 Min/ 30 Min/ 60 Min.

Slow Motion Movie

This allows to record the action at a faster rate than usual or replayed at a slower rate than usual. This feature is only available on 1280x 720p@120fps.



Fast Motion Movie

This allows to record the action at a slower rate than usual or replayed at a faster rate than usual. This feature is not available when Timelapse is activated.

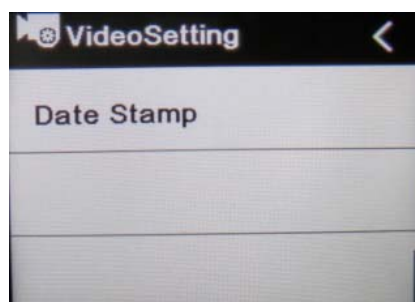
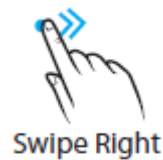
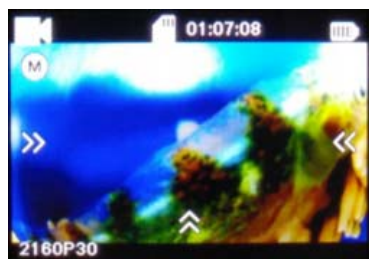
Wind Noise Reduction

To reduce the wind noise.

Scene Mode

To set different scene mode, Manual, Water, Riding, Winter, Diving, Night.

You can easily access this mode with touch operation by swiping right.

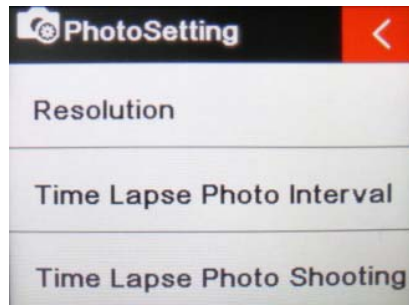


Date Stamp

To define if the Date/Time mark is displayed at the top of the videos.

5.2 Photo Setting

Press Power Button (A) once to navigate, press Shutter Button (B) to Enter/Confirm selection.



Resolution

To set the image resolution.

Time Lapse Photo Interval

This allows you to shoot a continuous sequence of photos with the following intervals
Off/3 Sec/5 Sec/10 Sec/30 Sec/1 Min.

Time Lapse Photo Shooting

To determine the photo Timelapse duration of "Unlimited/5 Min/ 10 Min/ 15 Min/ 20
Min/ 30 Min/ 60 Min.

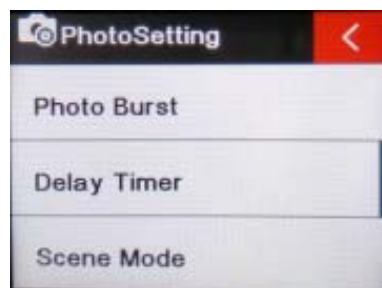


Photo Burst

This allows you to shoot 3 shots/1s, 7 shots / 2s, 15 shots/ 4s, 30 shots/ 8s.

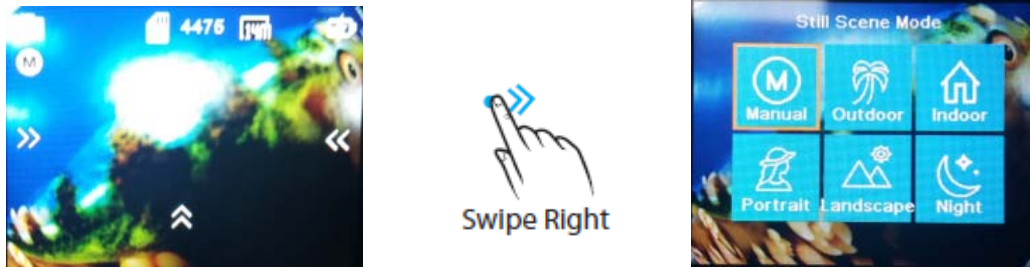
Delay Timer

When this mode is enabled, it lets you set intervals of Delay 2s, Delay 10s when a
single photo is taken after clicking the Record button.

Scene Mode

To set different scene mode, Manual, Outdoor, Indoor, Portrait, Landscape, Night.

You can easily access this mode with touch operation by swiping right.

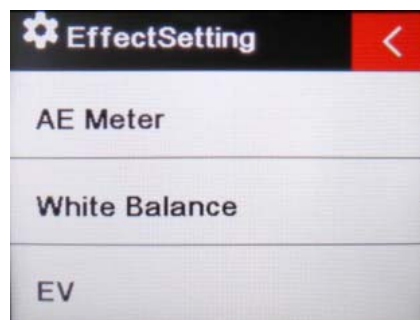


Picture Quality

To set the picture quality.

5.3 Effect Setting

Press Power Button (A) once to navigate, press Shutter Button (B) to Enter/Confirm selection.



AE Meter

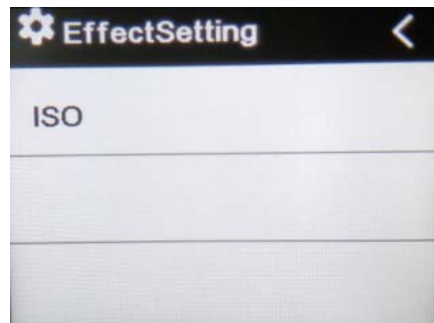
To define which image areas are used to calculate the correct exposure.

White Balance

Factory default is Auto. If you switch Auto OFF, remember to adjust when lighting condition changes.

EV

This allows user to set the light exposure value.



ISO

This is the measurement of the sensor's sensitivity to light.

5.3 GENERAL SETTING



Control

This allows user to set the microphone volume, Speaker volume, LCD Brightness.

Sounds

Turns off or on sound of Shutter, Boot-up, Beep.

Power Frequency

Selecting the correct light frequency will avoid the possibility for strobing.



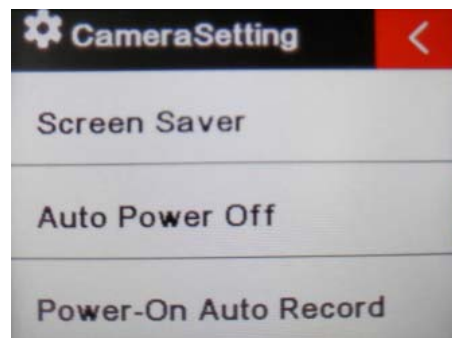
WIFI

Selecting to turn on or turn off the Wi-Fi function.



Date & Time

This allows user to adjust the date &time.



Screen Saver

This will determine if the LCD will turn off after 1 min, 3 min, 5 min. Press any key to turn the screen on.

Select OFF to keep the screen always ON.

Auto Power Off

The camera turns off when not in use after specified time.

Power-On Auto Record

The camera records automatically once power on.



USB

MSDC

Use the USB cable to connect the camera on your computer, the camera will turn on automatically, then enter into storage mode, that is to say, your camera now is used as an external storage device. Alternatively you can remove the Micro SD card and use a card reader (not included) to achieve the same result.

1. Select the file(s) you want to transfer to your computer by highlighting them.
2. Either drag the files to the desired place on your computer (this will make a copy of the file on your computer) OR right-click the file, select "Copy" and right-click in the desired place in your computer and select "Paste".

Note: You can also transfer entire folders of pictures / videos to your computer.

UVC MJPG

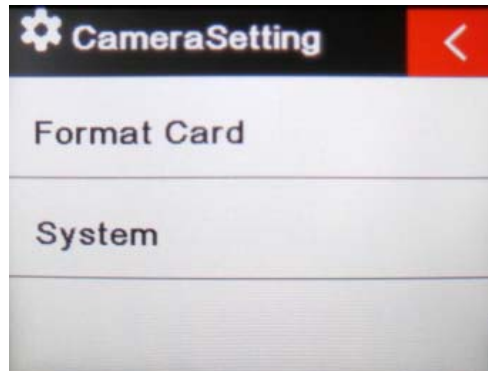
The Camera can be used as a PC camera (webcam).

Reset WiFi Setting

To reset the WiFi in factory default.

LANGUAGE

To select the device language, total 3 different languages.



Format Card

This is to format the SD card. Choosing to format the card will permanently erase all data on the card.

System

Factory Reset

To reset the camera in factory default.

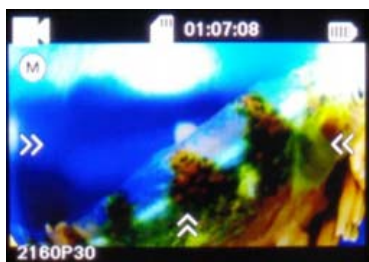
System Info

To show the information of the system.

Card Info

To show the capacity and free space of the Micro SD card.

Note: You can easily access some settings such as Beep, Mic, Speaker, RF and Wi-Fi with touch operation by swiping up.

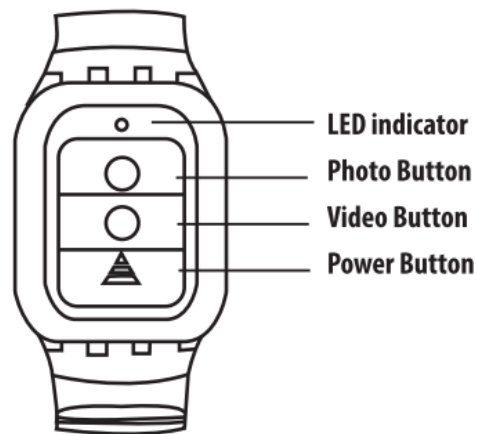


6. Playback Mode

Press Power button (A) to navigate, long press Shutter button (B) to enter the selection, short press Shutter button (B) to play, short press Shutter button (B) again to exit the play control panel.

You can operate it more easily by tap the screen.

7. Remote Control



7.1 Paring Procedure

Turn on the RF in camera setting menu, press power Remote Control button and hold on for 3 seconds to turn on the controller and pair. The LED Indicator will blink blue.

7.2 Using your remote

Photo Shot

Press the Photo button once to shoot a single picture, the LED indicator of remote flickers twice.

Video Record

Press the video button once to start recording, the LED indicator flickers twice also,

press the Video button again to stop.

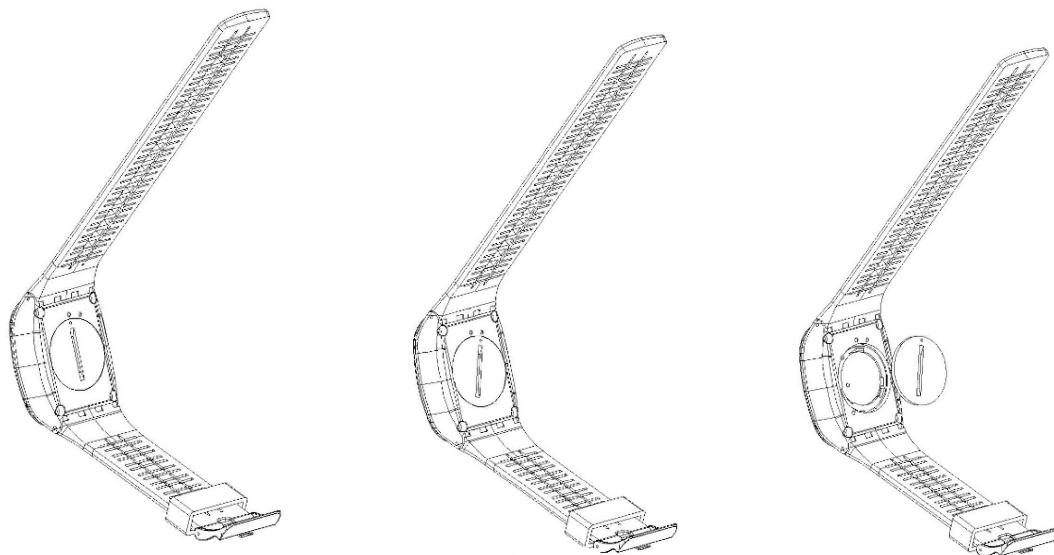
Power OFF button

Press the Power OFF button and hold on for 3 seconds to turn off the camera, the LED indicator turns off accordingly.

7.3 Replace a new button battery

Like any battery, the one in the T67' remote will eventually die. When it does, the red LED indicator flickers once per second. You need to replace with a new button battery.

How to replace a button battery?



Step 1

--->

Step 2

--->

Step 3

1. Begin by purchasing a replacement battery for your remote. You need a button battery with model No. CR2032.
2. Screw the round cap at the bottom of remote, see above pictures for reference.
3. Remove the old battery.
4. Insert the new battery into the slot where the old battery was, with the flat surface up.

8. Wi-Fi Setup

The T67 allows full camera control, live previewing and playback of photos/videos on most Smart phones and Tablets.

a. Download the App "iSmart Pro" from "Google Play" or from the Apple "App Store".

b. Activate Wi-Fi in the GENERAL SETUP MENU.

Note: You can easily access the Wi-Fi setting with touch operation by swiping up

c. Go to the Wi-Fi settings on your Phone, you will see "SBC_XXXXXX" in the list of available Wireless networks.

Note: You can change the Wi-Fi name in the menu setting.

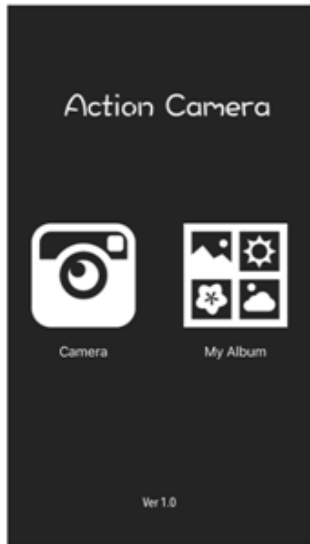
d. Connect your Phone to the "SBC_XXXXXX" via Wi-Fi.

The default Wi-Fi Password for the T67 is: 1234567890.

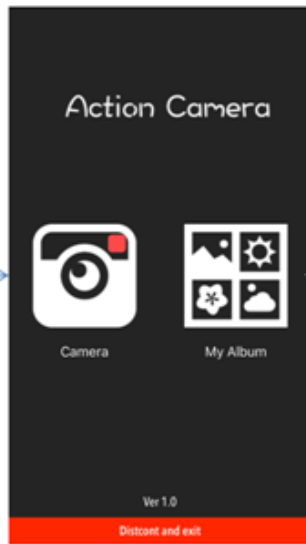
Note: You can change the Wi-Fi password in the menu setting.

e. Open the app "iSmart Pro"

Important: Before connecting camera via Wi-Fi, you need to download the "iSmart Pro" App on your smart phone or tablet.



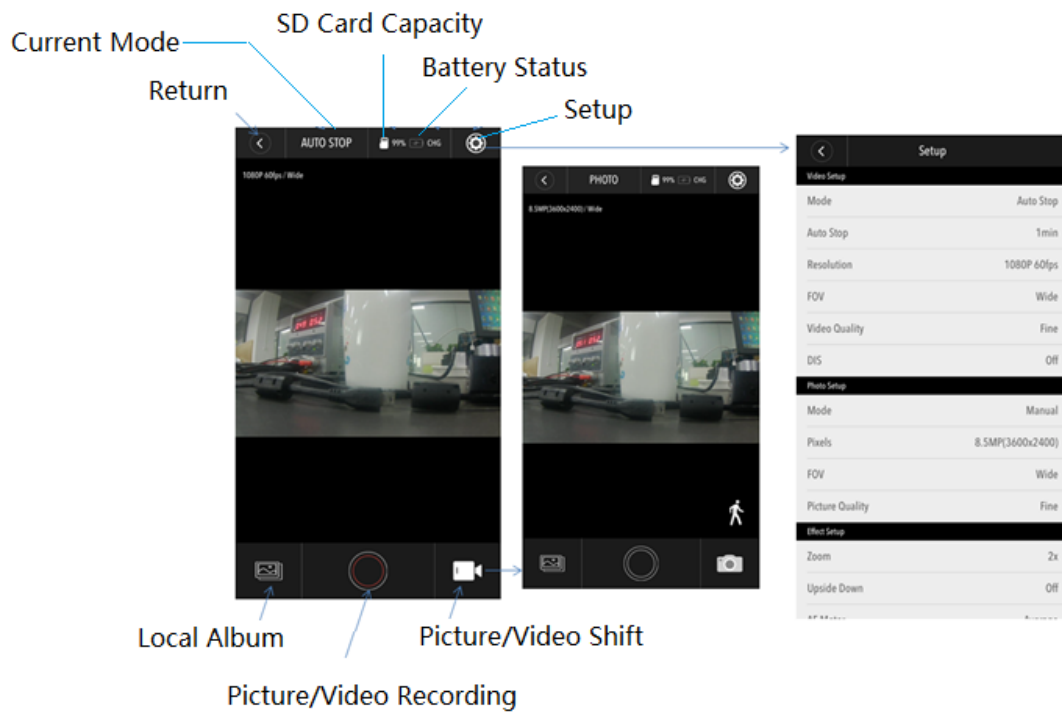
Open the App

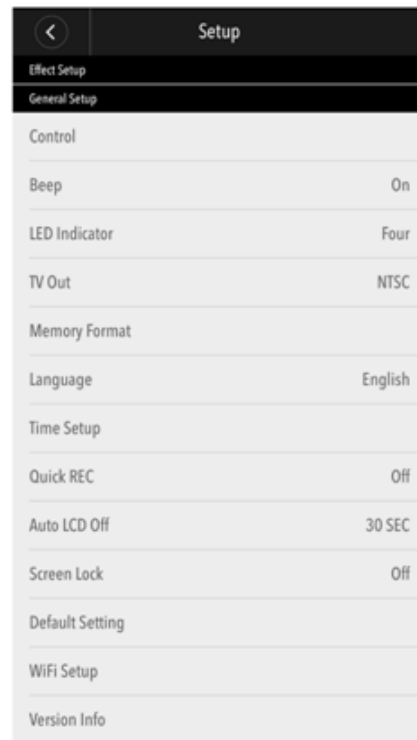
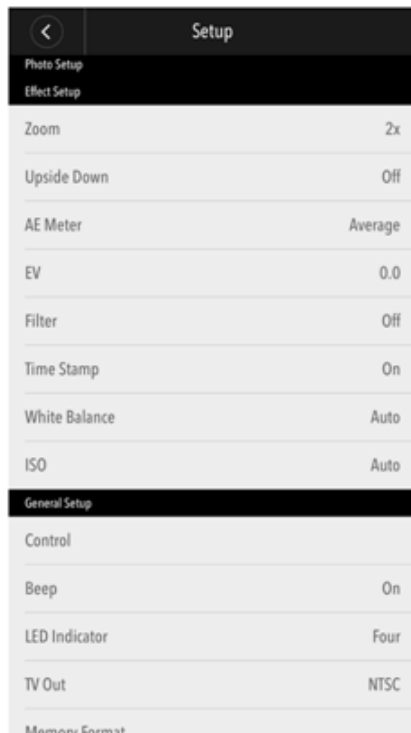


Connect successfully



Enter into the live interface





Setup Interface

9. Saving and Viewing Options

Connecting to TV

You can display the camera LCD screen on a TV screen.

Note: You will need an extra Mini HDMI to HDMI cable, which is not included in the standard package.

- Turn the camera on;
- Connect Mini HDMI end to the port on camera and HDMI end to HDMI port on the TV;
- Select the right source on the TV.

Cautions

Do not drop the camera.

Do not place heavy objects on the camera.

Keep the camera away from water and liquids (unless equipped with waterproof case).

This may cause the camera to malfunction.

Recharge the battery via the USB cable.

The camera should not be in heat over 55°C.

Do not use the camera when it is low power.

Do not use the camera while it is in charging.

Do not attempt to open the case of the camera or modify it in any way. If the camera has been detached, the warranty will be void. Maintenance and repairs can only be performed by TAT.

FCC Warning:

This equipment has been tested and found to comply with the limits for a Class B digital device, pursuant to part 15 of the FCC Rules. These limits are designed to provide reasonable protection against harmful interference in a residential installation. This equipment generates, uses and can radiate radio frequency energy and, if not installed and used in accordance with the instructions, may cause harmful interference to radio communications. However, there is no guarantee that interference will not occur in a particular installation. If this equipment does cause harmful interference to radio or television reception, which can be determined by turning the equipment off and on, the user is encouraged to try to correct the interference by one or more of the following measures:

- Reorient or relocate the receiving antenna.
- Increase the separation between the equipment and receiver.
- Connect the equipment into an outlet on a circuit different from that to which the receiver is connected.
- Consult the dealer or an experienced radio/TV technician for help.

Caution: Any changes or modifications to this device not explicitly approved by manufacturer could void your authority to operate this equipment.

This device complies with part 15 of the FCC Rules. Operation is subject to the following two conditions: (1) This device may not cause harmful interference, and (2) this device must accept any interference received, including interference that may cause undesired operation.

The device complies with RF specifications when the device used at 0mm from your body.