

N27

SMART WATCH



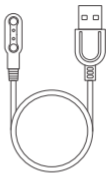
USER MANUAL

V1.0

What's in the Box



Smart Watch
x1



Magnetic USB Cable
x1



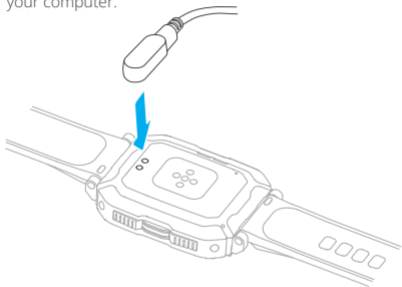
User Manual
x1



Extended Warranty
Card x1

Charging and Activating

Charge the device to activate it before using it for the first time. To charge your device, simply connect the charging cable to either the adapter or USB port on your computer.



Tip: When charging the smart watch, please keep the magnetic charging cable away from any metal conductor to avoid a short circuit.

Product Introduction



Button Operation

Status / Operation	Function
Power (MENU) Button: Long press for 3 seconds	Power on
Power (MENU) Button: Long press for 3 seconds	Power off
Power (MENU) Button: Short-press	Screen on
Power (MENU) Button: Short-press	Screen off
Power (MENU) Button: Short-press	Enter Sport mode
Power (MENU) Button: Short-press	Enter the function interface
Sport Button: Short-press	Enter the exercise list

Downloading the App

You can download the App in the following two ways.

1. Scan the following QR code to download and install the App.



2. Enter "DA FIT" in App Store or Google Play to download the App.



Da Fit



Pairing

Open the App and set up your profile



Go to "Device", and tap "Add A Device"



Choose your device on the scanning list



Complete

The MAC address found on the "Settings" → "About" page can assist in scanning QR codes and identifying your device on the scanning list.

TIPS:

1. To avoid pairing failure due to insufficient battery, it is important to keep the watch's battery level above 20% before initiating pairing.
2. During the process of pairing and connection, ensure that your mobile phone's Bluetooth is turned on and within the effective connection range of the watch.
3. This device requires a system version of Android 6.0 or higher, or iOS 9 or higher.
4. When using Da fit for the first time, please grant it access to Bluetooth, location services, and any other necessary permissions on your compatible smartphone.

Android Phone

1. Set up your profile
2. Go to "Device", and tap "Add A Device"
3. Choose your device on the scanning list



4. Confirm Connected 5. Select "Allow access to your contacts and call history", then tap "Pair" to confirm pairing



Notes:

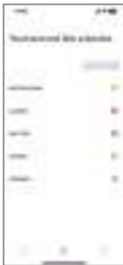
It takes 3-5 seconds before you can access the pairing interface.

iOS Phone

1. Set up your profile



2. Go to "Device", and tap "Add A Device"



3. Choose your device on the scanning list



4. Confirm Connected

5. Tap "Pair" the in Bluetooth pairing request page to enable Bluetooth

6. Select "Allow" to allow N27 to receive your iPhoto notifications



Note: After successfully connecting your smartwatch to the App, please follow these steps to enable Bluetooth calling in case you cannot find the Bluetooth pairing request or accidentally tapped "CANCEL".

Tip: This feature is specifically designed for Android and iOS phones.

1. Find the Bluetooth function in your phone's settings page, toggle the switch to turn it on, then select the N27 device to establish a connection

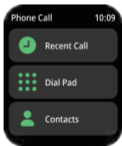
2. Select "Allow access to your contacts and call history", then tap "Pair" to confirm pairing



3. Bluetooth connected



4. The watch features a phone call function that is readily available

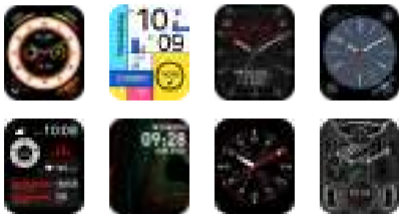


Use the Touch Screen



Main Interface Switching

1. To enter the selection dial interface, long-press the main interface for 3 seconds. Slide left or right to navigate through the available options, and click to confirm your selection.



2. Find more dials: Enter the “Da fit” App and tap “dial selection” > more dial settings.

Smart Watch Features



Activity

When wearing the watch regularly, it will provide you with real-time information about your exercise progress including steps taken, distance covered, and calories burned.

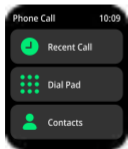
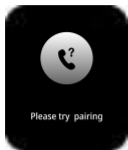
Note: This data is updated daily before 12:00 a.m., reflecting the activities of the previous day.



Sleep

If you keep wearing Smart Watch during your sleep, it can provide you with valuable information about your sleep duration and quality. This data is conveniently displayed on both the device's screen and the App.

Note: Sleep stats reset to zero at 8:00 pm.



Call Bluetooth connection

Turn on the Smartwatch, and the "N27" Bluetooth pairing will pop up automatically in your phone. Please tap "Pairing" to establish the connection. When Bluetooth is connected to your phone, you can use the watch to dial, control the mobile phone to make a call, listen to music, and view the call record information on the watch.

Phone Call function

Add contacts:

Open Dafit from your phone to tap "Favorite Contacts" → "Add quick newsletter". You can add up to 8 contacts.



Exercise

107 sports modes to choose from, including walking, running, cycling, basketball, football, badminton, skipping, and rope exercises. To activate a sport mode, simply turn it on and swipe left to select the option to pause or end the exercise. If you wish to add a new sport mode, scroll down to the bottom and click "Add" to select your desired option.



Heart Rate Test

The Smart Watch could record your heart rate all day.

You can also tap on the page to start measuring your heart rate.



Blood Pressure Test

Tap on the blood pressure page to start measuring your blood pressure.

On the blood pressure page, you can access the recently measured data of your blood pressure.



SpO2 Test

Tap the SpO2 page to start measuring your SpO2.

On the SpO2 page, you can access the recently measured data of your SpO2.



Weather

It can show the weather info including location, and sunrise, and sunset.

After connecting to the app, the weather information is synced and will not update if there is a long period of disconnection.



Slide up the weather interface to view the weather conditions in the next 6 days.



AI voice

The voice assistant is a smart phone application. You can open it to command your phone through smart dialogue, such as sending a message to make a call.



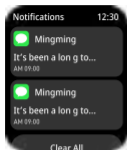
Remote Shutter

After connecting to the device, you will be able to effortlessly control the Smartwatch using your phone from any location.



Relaxation

Sucking function exercise serves the purpose of facilitating effective breathing and strengthening the respiratory muscles. Engaging in deep breathing exercises can greatly aid in relieving stress.



Notifications

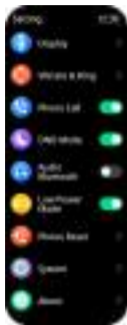
This watch offers support for phone calls, text messages, social media apps such as Facebook, Twitter, WhatsApp, and Skype, as well as other application notifications. The watch's page can store up to 8 information records at a time.

Note: You can switch on/off the incoming notification in the App.



Other function interfaces

Other functions of the watch include: Stopwatch, Alarm, Timer, Flashlight, Game, Calculator, Find Phone.



Setting

Display (Brightness adjustment, Auto Sleep time select, watch face, menu view, Quick view switch), Vibration switch, Phone Call, DND Mode, Audio Bluetooth, Low Power Mode, Phone Reset, System (Restart, power off, Factory reset), About

On the Setting page, you can choose to mute or unmute notifications of Phone call, DND Mode, Audio Bluetooth, and Low Power mode.

General Info & Specifications

1. Product parameters



Tip: Fits wrists with a circumference ranging from 5.5 to 7.7 inches

2. **Model:** N27

3. **Charging method:** Magnetic suction charging

4. Environmental Conditions

Operating temperature: 14 to 122 (-10 to 50)

Non-operating temperature: -4 to 140 (-20 to 60)

5. Waterproof rating

This device is rated IP69K for waterproofness, however, it is advisable to avoid prolonged immersion in water.

6. Battery

The 350mAh polymer lithium-ion battery can standby for up to 40 days and provides a normal usage duration of 7-8 days.

Common problem handling

1. Watch won' t turn on

- Please press and hold the power button for more than 3 seconds.
- Maybe the battery is too low, please charge it in time.

2. Bluetooth is not connected or unable to connect

- Please try to restart the watch and reconnect.
- Please try to restart the phone's Bluetooth and connect again.
- Do not connect the phone to other Bluetooth devices at the same time.

3. Inaccurate heart rate/blood pressure/blood oxygen/ ECG measurement

- Generally, this issue arises due to inadequate contact between the watch's sensor and the human body while measuring.
- Please make sure that the sensor is in full contact with your wrist during measurement.

- For accurate measurement, please ensure that your body remains still and keep the watch close to your wrist.
- For individuals with darker skin tones and more hair on their arms, there is a phenomenon of inaccurate testing.

4. Sleep data is not accurate enough

- Sleep monitoring aims to replicate the natural process of falling asleep and waking up, requiring the device to be worn as one would do during regular sleep.
- Wear it when you fall asleep too late or when you fall asleep, errors may occur.
- Sleep data is exclusively monitored during the night, and the default sleep monitoring period spans from 10:00 pm to 8:00 am the following morning.

Precautions

1. Do not disassemble, repair, or modify the product without authorization.
2. Do not violently bump the product to prevent it from damage.
3. Please avoid exposure to strong magnetic fields, direct light, or high-temperature environments.
4. This product is not classified as a medical apparatus. The heart rate, blood pressure, and other health data collected by it are intended for reference purposes only and should not be used as a clinical basis.
5. Please ensure that you don't wear the watch strap too tightly and remember to keep the area where the watch comes into contact with your skin clean.
6. Please refrain from wearing this watch while taking a hot bath. The temperature of the bathwater is significantly high, leading to the generation of a substantial amount of water vapor. Water vapor exists in a gaseous phase and possesses small molecular radius. As the temperature subsequently decreases, this vapor can easily permeate through any gaps in

the watch shell.

Once it cools down further, it will condense back into liquid droplets. This condensed water may then accumulate within the watch, potentially causing damage or malfunction.

7. It is important for children to use this product under the guidance of their parents in order to prevent any potential harm.

Please read this guide before operating your smart watch,
and keep it for future reference.

50005000144

FCC Statement

This equipment has been tested and found to comply with the limits for a Class B digital device, pursuant to Part 15 of the FCC Rules. These limits are designed to provide reasonable protection against harmful interference in a residential installation. This equipment generates uses and can radiate radio frequency energy and, if not installed and used in accordance with the instructions, may cause harmful interference to radio communications. However, there is no guarantee that interference will not occur in a particular installation. If this equipment does cause harmful interference to radio or television reception, which can be determined by turning the equipment off and on, the user is encouraged to try to correct the interference by one or more of the following measures:

- Reorient or relocate the receiving antenna.
- Increase the separation between the equipment and receiver.
- Connect the equipment into an outlet on a circuit different from that to which the receiver is connected.
- Consult the dealer or an experienced radio/TV technician for help.

This device complies with part 15 of the FCC Rules. Operation is subject to the following two conditions: (1) This device may not cause harmful interference, and (2) this device must accept any interference received, including interference that may cause undesired operation.

Changes or modifications not expressly approved by the party responsible for compliance could void the user's authority to operate the equipment.

.....

- English:

This device complies with Industry Canada licence-exempt RSS standard(s). Operation is subject to the following two conditions: (1) This device may not cause interference, and (2) This device must accept any interference, including interference that may cause undesired operation of the device.

- French:

Le présent appareil est conforme aux CNR d'Industrie Canada applicables aux appareils radio exempts de licence. L'exploitation est autorisée aux deux conditions suivantes:

- (1) l'appareil ne doit pas produire de brouillage, et
- (2) l'utilisateur de l'appareil doit accepter tout brouillage radioélectrique subi, même si le brouillage est susceptible d'en compromettre le fonctionnement.