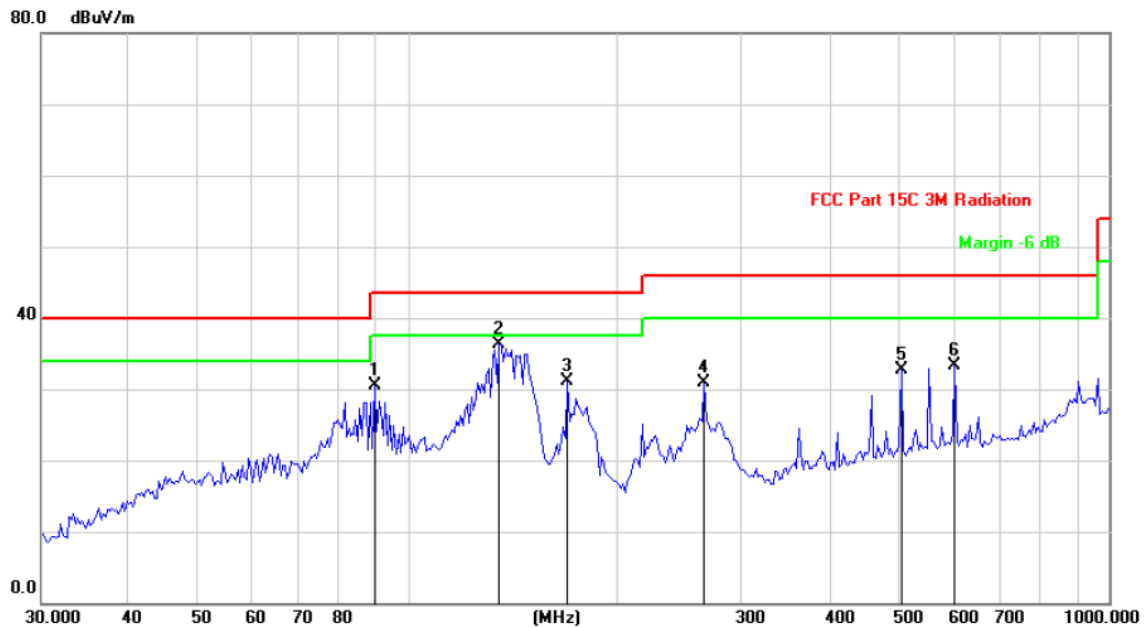


Please refer to following diagram for individual

Below 1GHz

Horizontal:

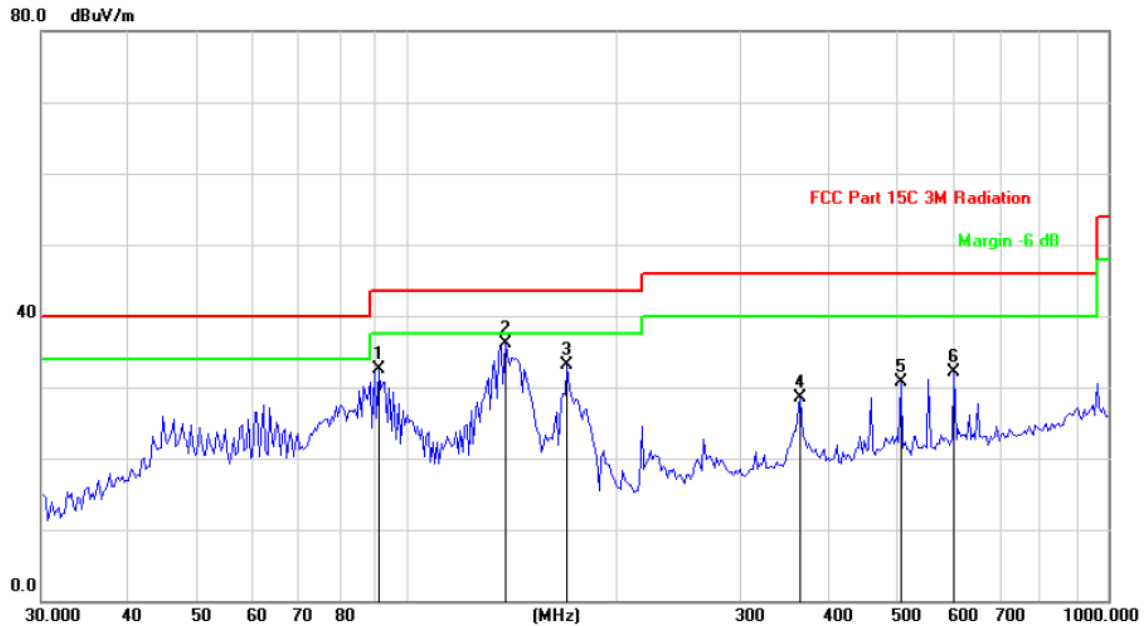


Site: Polarization: *Horizontal* Temperature: 25
 Limit: FCC Part 15C 3M Radiation Power: AC 120V/60Hz Humidity: 55 %

| No. | Mk. | Freq. MHz | Reading Level dBuV | Correct Factor dB | Measure- ment dBuV/m | Limit dB/m | Over dB | Detector |
|-----|-----|--------------|--------------------------|-------------------------|----------------------------|---------------|------------|----------|
| 1 | | 89.7866 | 40.94 | -10.53 | 30.41 | 43.50 | -13.09 | peak |
| 2 | * | 134.9643 | 52.04 | -15.75 | 36.29 | 43.50 | -7.21 | peak |
| 3 | | 168.9970 | 46.46 | -15.41 | 31.05 | 43.50 | -12.45 | peak |
| 4 | | 264.9708 | 43.06 | -12.07 | 30.99 | 46.00 | -15.01 | peak |
| 5 | | 505.7891 | 40.00 | -7.35 | 32.65 | 46.00 | -13.35 | peak |
| 6 | | 602.9287 | 39.17 | -5.78 | 33.39 | 46.00 | -12.61 | peak |



Vertical:



Site: Polarization: **Vertical** Temperature: 25
 Limit: FCC Part 15C 3M Radiation Power: AC 120V/60Hz Humidity: 55 %

| No. | Mk. | Freq. MHz | Reading Level dBuV | Correct Factor dB | Measure- ment dBuV/m | Limit dB/m | Over dB | Detector |
|-----|-----|--------------|--------------------------|-------------------------|----------------------------|---------------|------------|----------|
| 1 | | 91.0574 | 42.69 | -10.15 | 32.54 | 43.50 | -10.96 | peak |
| 2 | * | 137.8400 | 51.98 | -15.94 | 36.04 | 43.50 | -7.46 | peak |
| 3 | | 168.9970 | 48.48 | -15.41 | 33.07 | 43.50 | -10.43 | peak |
| 4 | | 363.5230 | 38.08 | -9.49 | 28.59 | 46.00 | -17.41 | peak |
| 5 | | 505.7891 | 38.05 | -7.35 | 30.70 | 46.00 | -15.30 | peak |
| 6 | | 602.9287 | 37.94 | -5.78 | 32.16 | 46.00 | -13.84 | peak |

Note: 1. The low frequency, which started from 9KHz~30MHz, was pre-scanned and the result which was 20dB lower than the limit line per 15.31(o) was not reported

2. Measurements were conducted in all three channels (high, middle, low) and three modulation (GFSK, Pi/4 DQPSK, 8DPSK) and the worst case Mode (Highest channel and 8DPSK) was submitted only.

3. Freq. = Emission frequency in MHz

Measurement (dBuV/m) = Reading level (dBuV) + Corr. Factor (dB)

Correction Factor = Antenna Factor + Cable loss - Pre-amplifier

Limit (dBuV/m) = Limit stated in standard

Margin (dB) = Measurement (dBuV/m) - Limits (dBuV/m)

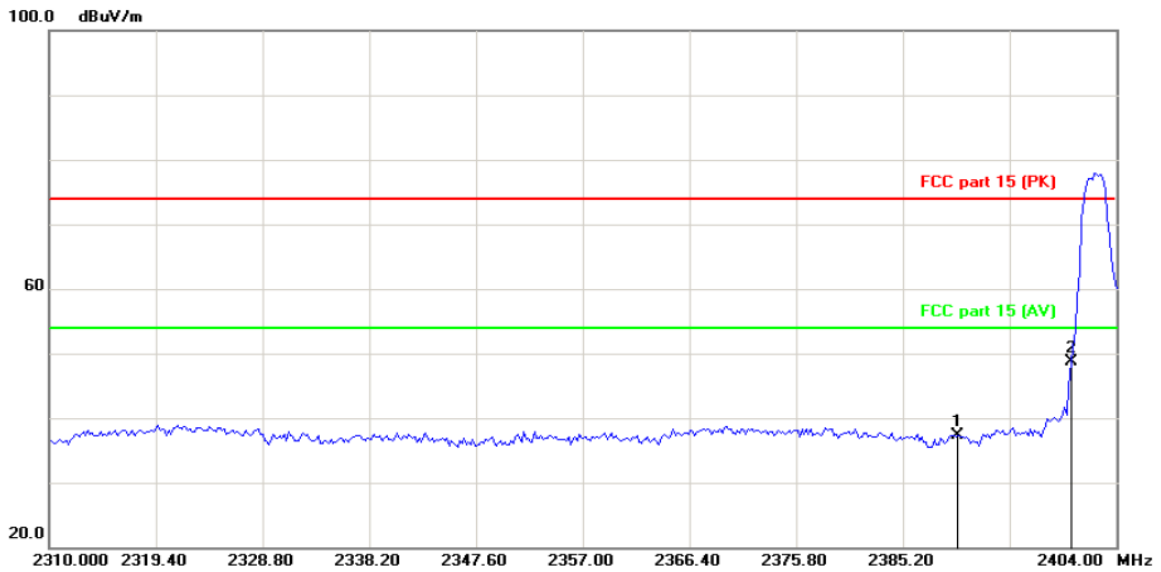
Any value more than 10dB below limit have not been specifically reported

* is meaning the worst frequency has been tested in the test frequency range

Test Result of Radiated Spurious at Band edges

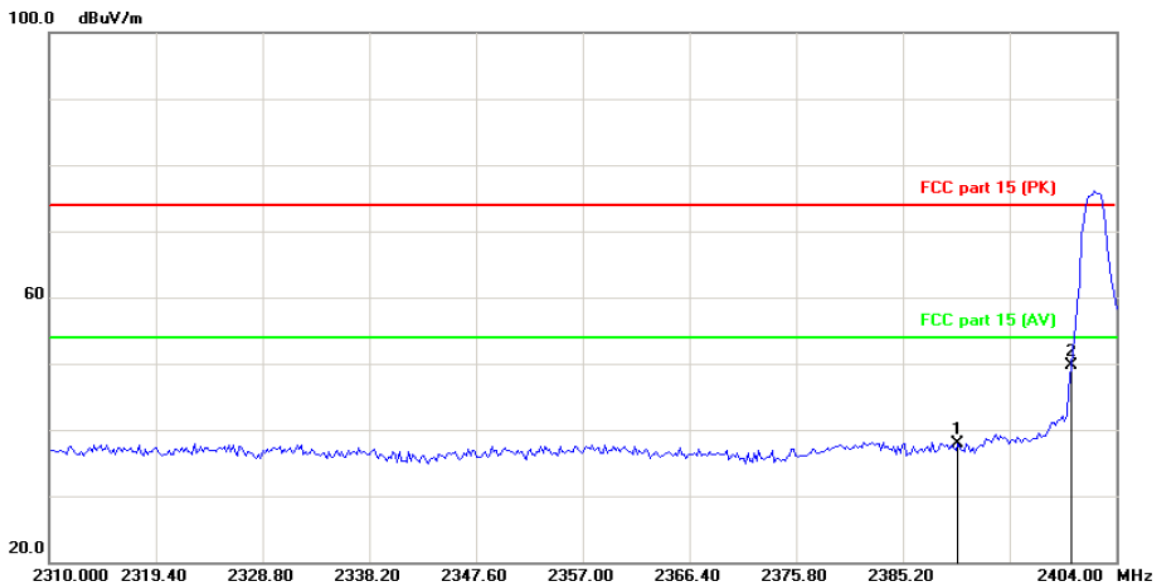
Lowest channel 2402:

Horizontal:



Site: _____ Polarization: **Horizontal** Temperature: 25
Limit: FCC part 15 (PK) Power: _____ Humidity: 55 %

Vertical:

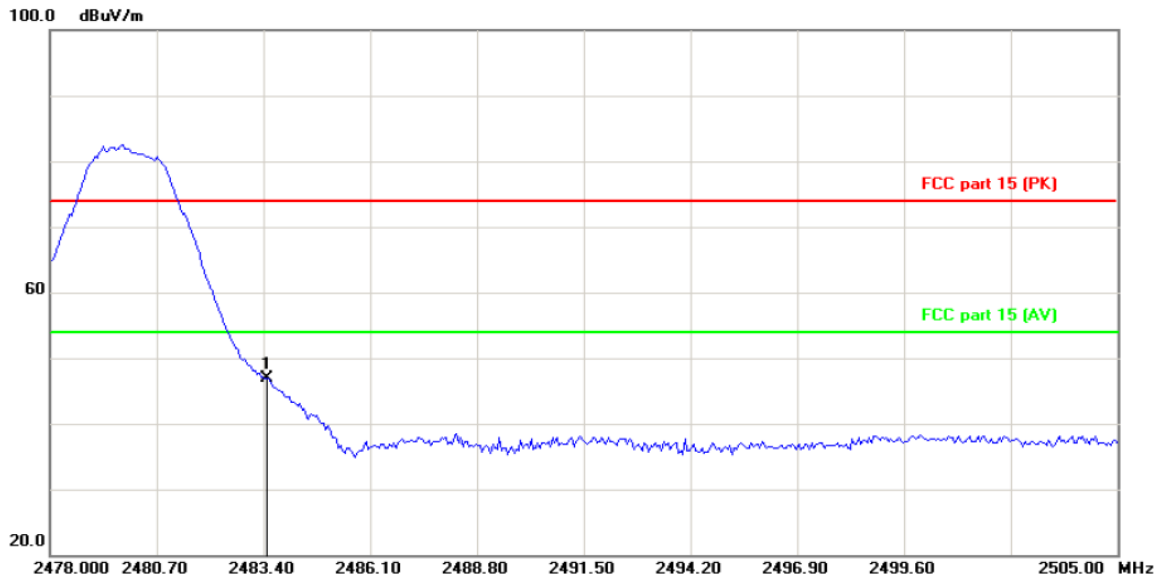


Site: _____ Polarization: **Vertical** Temperature: 25
Limit: FCC part 15 (PK) Power: _____ Humidity: 55 %

| Frequency (MHz) | Ant. Pol. H/V | Peak (dBuV/m) | Duty cycle factor (dB/m) | AV (dBuV/m) | Peak limit (dBuV/m) | AV limit (dBuV/m) | PK Margin (dB) | AVG Margin (dB) |
|-----------------|---------------|---------------|--------------------------|-------------|---------------------|-------------------|----------------|-----------------|
| 2390 | H | 37.27 | -1.66 | 35.61 | 74 | 54 | -36.73 | -18.39 |
| 2390 | V | 37.89 | -1.66 | 36.23 | 74 | 54 | -36.11 | -17.77 |
| 2400 | H | 48.80 | -1.66 | 47.14 | 74 | 54 | -25.20 | -6.86 |
| 2400 | V | 49.69 | -1.66 | 48.03 | 74 | 54 | -24.31 | -5.97 |

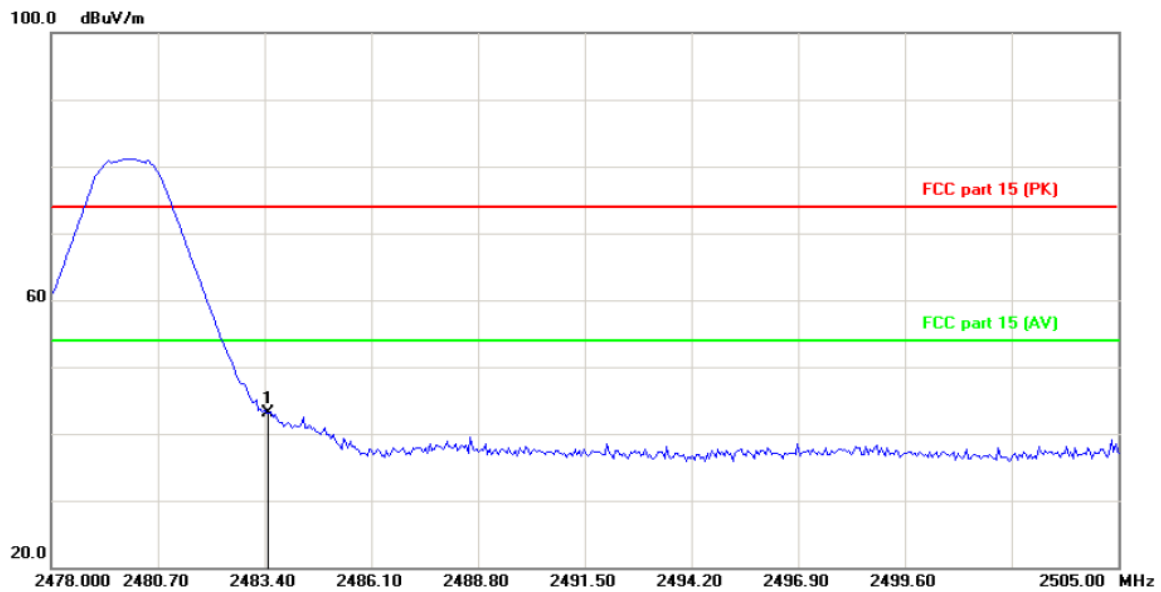
Highest channel 2480:

Horizontal:



Site: Polarization: **Horizontal** Temperature: 25
 Limit: FCC part 15 (PK) Power: Humidity: 55 %

Vertical:



Site: Polarization: **Vertical** Temperature: 25
 Limit: FCC part 15 (PK) Power: Humidity: 55 %

| Frequency (MHz) | Ant. Pol. H/V | Peak (dBuV/m) | Duty cycle factor (dB/m) | AV (dBuV/m) | Peak limit (dBuV/m) | AV limit (dBuV/m) | PK Margin (dB) | AVG Margin (dB) |
|-----------------|---------------|---------------|--------------------------|-------------|---------------------|-------------------|----------------|-----------------|
| 2483.5 | H | 46.85 | -1.66 | 45.19 | 74 | 54 | -27.15 | -8.81 |
| 2483.5 | V | 43.19 | -1.66 | 41.53 | 74 | 54 | -30.81 | -12.47 |

Note: Measurements were conducted in all three modulation (GFSK, Pi/4DQPSK, 8DPSK), and the worst case Mode (8DPSK) was submitted only.

Above 1GHz

| Modulation Type: 8DPSK | | | | | | | | | |
|------------------------|---------------|---------------------------|-------------------------|--------------------------|---------------------|-------------------|---------------------------|-------------------------|-------------|
| Low channel: 2402 MHz | | | | | | | | | |
| Frequency (MHz) | Ant. Pol. H/V | Peak reading (dB μ V) | AV reading (dB μ V) | Correction Factor (dB/m) | Emission Level | | Peak limit (dB μ V/m) | AV limit (dB μ V/m) | Margin (dB) |
| | | | | | Peak (dB μ V/m) | AV (dB μ V/m) | | | |
| 4804 | H | 45.15 | --- | 0.66 | 45.81 | --- | 74 | 54 | -8.19 |
| 7206 | H | 35.34 | --- | 9.50 | 44.84 | --- | 74 | 54 | -9.16 |
| --- | H | --- | --- | --- | --- | --- | --- | --- | --- |
| 4804 | V | 44.66 | --- | 0.66 | 45.32 | --- | 74 | 54 | -8.68 |
| 7206 | V | 34.48 | --- | 9.50 | 43.98 | --- | 74 | 54 | -10.02 |
| --- | V | --- | --- | --- | --- | --- | --- | --- | --- |

| Middle channel: 2441 MHz | | | | | | | | | |
|--------------------------|---------------|---------------------------|-------------------------|--------------------------|---------------------|-------------------|---------------------------|-------------------------|-------------|
| Frequency (MHz) | Ant. Pol. H/V | Peak reading (dB μ V) | AV reading (dB μ V) | Correction Factor (dB/m) | Emission Level | | Peak limit (dB μ V/m) | AV limit (dB μ V/m) | Margin (dB) |
| | | | | | Peak (dB μ V/m) | AV (dB μ V/m) | | | |
| 4882 | H | 44.89 | --- | 0.99 | 45.88 | --- | 74 | 54 | -8.12 |
| 7323 | H | 34.61 | --- | 9.87 | 44.48 | --- | 74 | 54 | -9.52 |
| --- | H | --- | --- | --- | --- | --- | --- | --- | --- |
| 4882 | V | 43.80 | --- | 0.99 | 44.79 | --- | 74 | 54 | -9.21 |
| 7323 | V | 34.24 | --- | 9.87 | 44.11 | --- | 74 | 54 | -9.89 |
| --- | V | --- | --- | --- | --- | --- | --- | --- | --- |

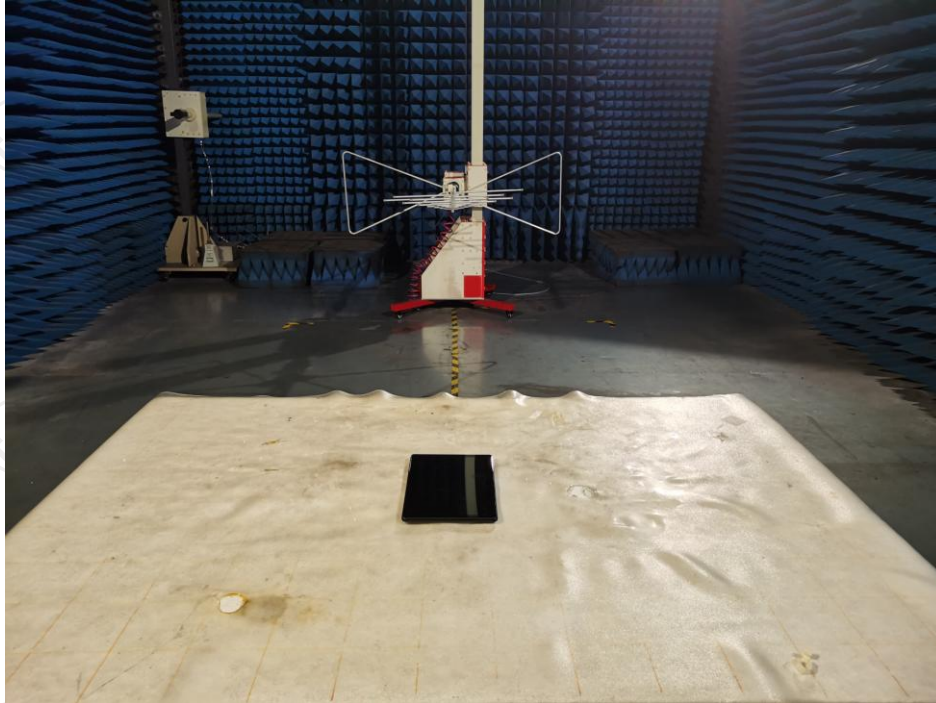
| High channel: 2480 MHz | | | | | | | | | |
|------------------------|---------------|---------------------------|-------------------------|--------------------------|---------------------|-------------------|---------------------------|-------------------------|-------------|
| Frequency (MHz) | Ant. Pol. H/V | Peak reading (dB μ V) | AV reading (dB μ V) | Correction Factor (dB/m) | Emission Level | | Peak limit (dB μ V/m) | AV limit (dB μ V/m) | Margin (dB) |
| | | | | | Peak (dB μ V/m) | AV (dB μ V/m) | | | |
| 4960 | H | 46.32 | --- | 1.33 | 47.65 | --- | 74 | 54 | -6.35 |
| 7440 | H | 37.06 | --- | 10.22 | 47.28 | --- | 74 | 54 | -6.72 |
| --- | H | --- | --- | --- | --- | --- | --- | --- | --- |
| 4960 | V | 46.95 | --- | 1.33 | 48.28 | --- | 74 | 54 | -5.72 |
| 7440 | V | 36.37 | --- | 10.22 | 46.59 | --- | 74 | 54 | -7.41 |
| --- | V | --- | --- | --- | --- | --- | --- | --- | --- |

Note:

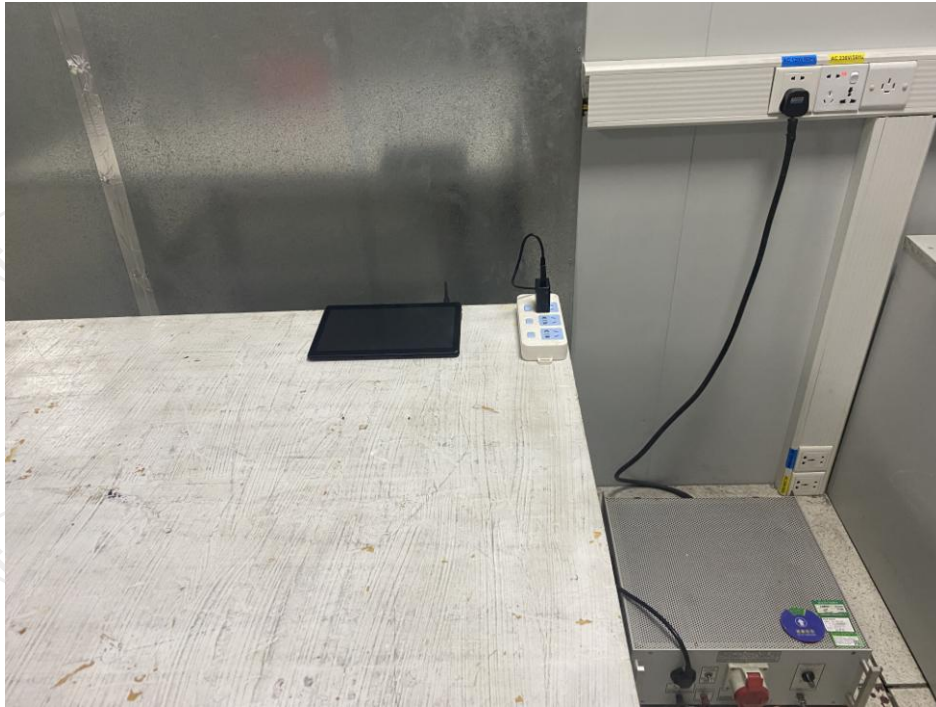
1. Emission Level=Peak Reading + Correction Factor; Correction Factor= Antenna Factor + Cable loss – Pre-amplifier
2. Margin (dB) = Emission Level (Peak) (dB μ V/m)-Average limit (dB μ V/m)
3. The emission levels of other frequencies are very lower than the limit and not show in test report.
4. Measurements were conducted from 1 GHz to the 10th harmonic of highest fundamental frequency.
5. Data of measurement shown "----" in the above table mean that the reading of emissions is attenuated more than 20 dB below the limits or the field strength is too small to be measured.
6. Measurements were conducted in all three modulation (GFSK, Pi/4 DQPSK, 8DPSK), and the worst case Mode (8DPSK) was submitted only.
7. All the restriction bands are compliance with the limit of 15.209.

Appendix A: Photographs of Test Setup

Product: Tablet PC
Model: MemoPad T1
Radiated Emission

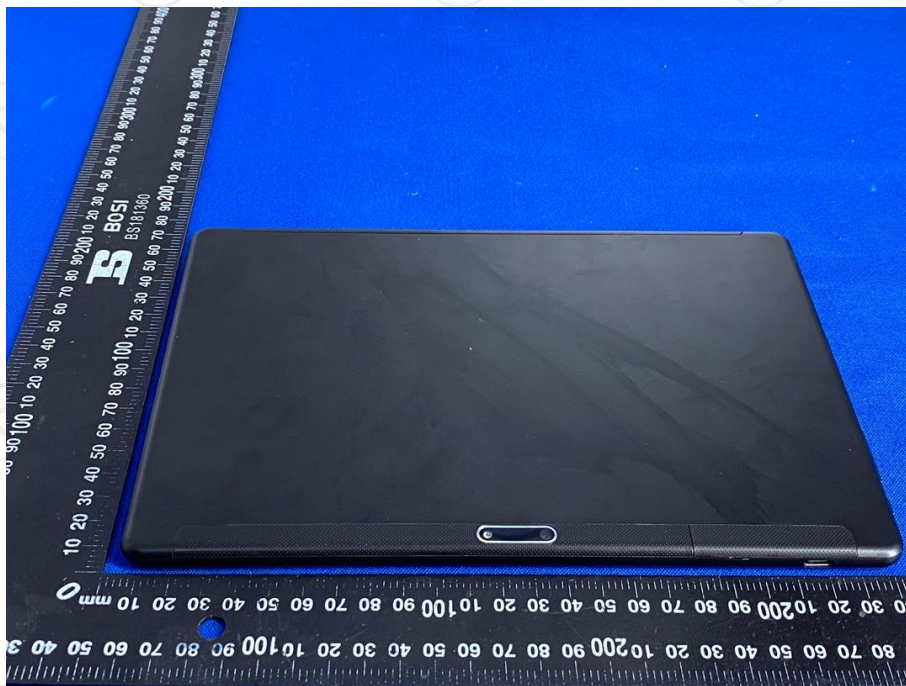
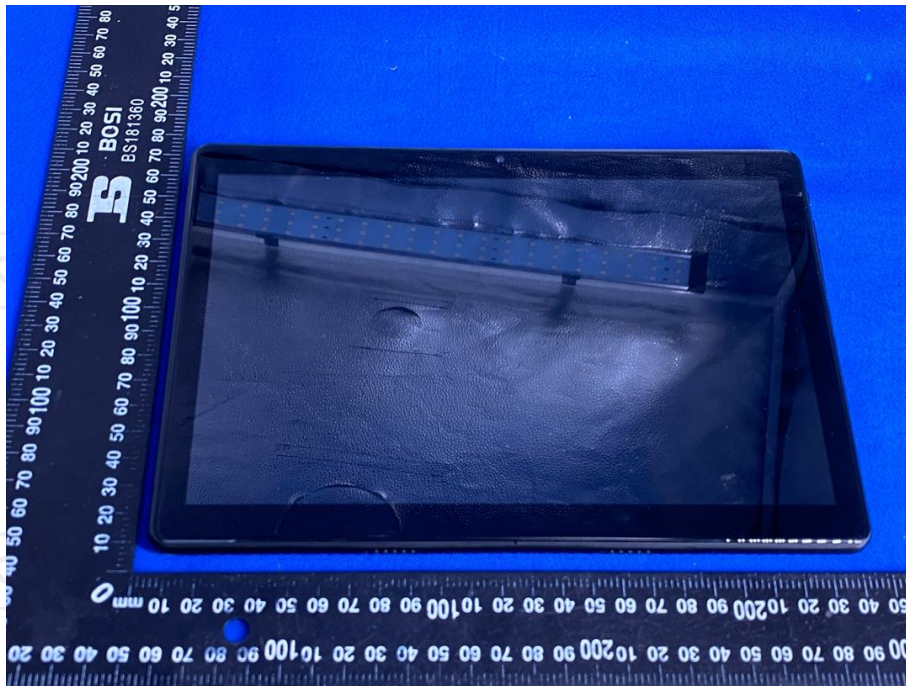


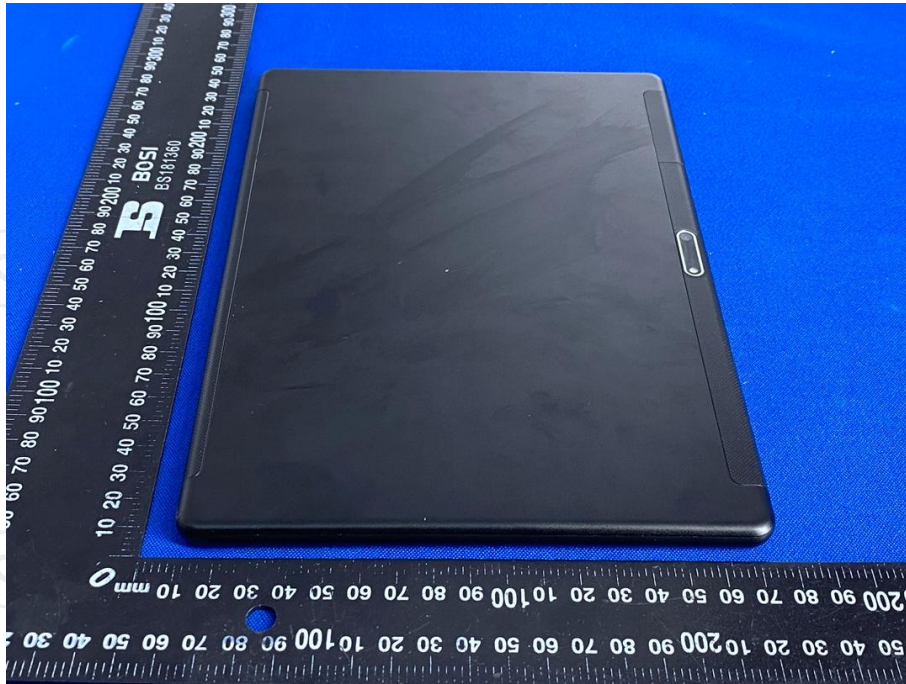
Conducted Emission

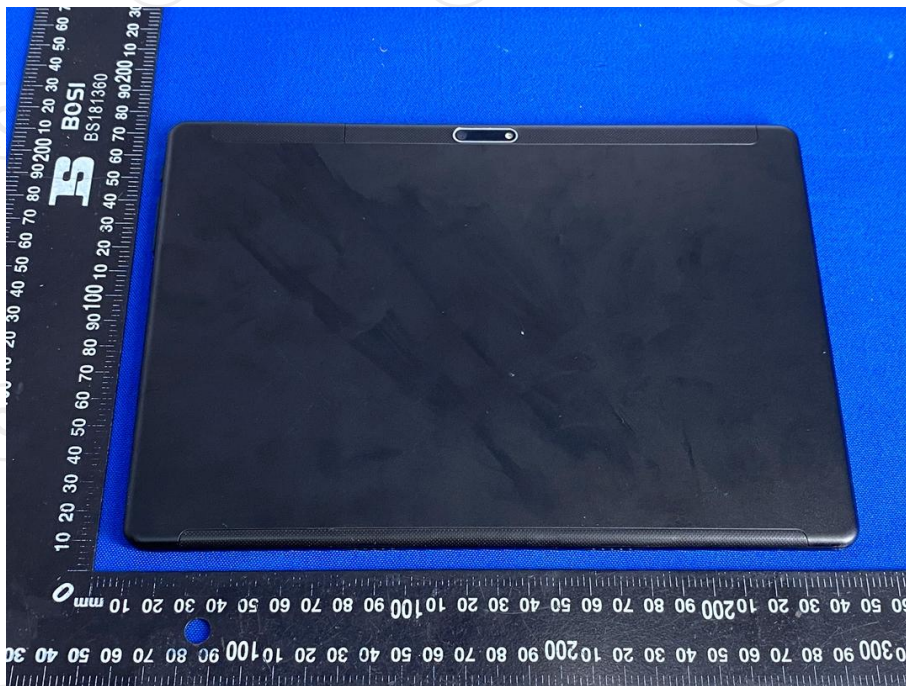
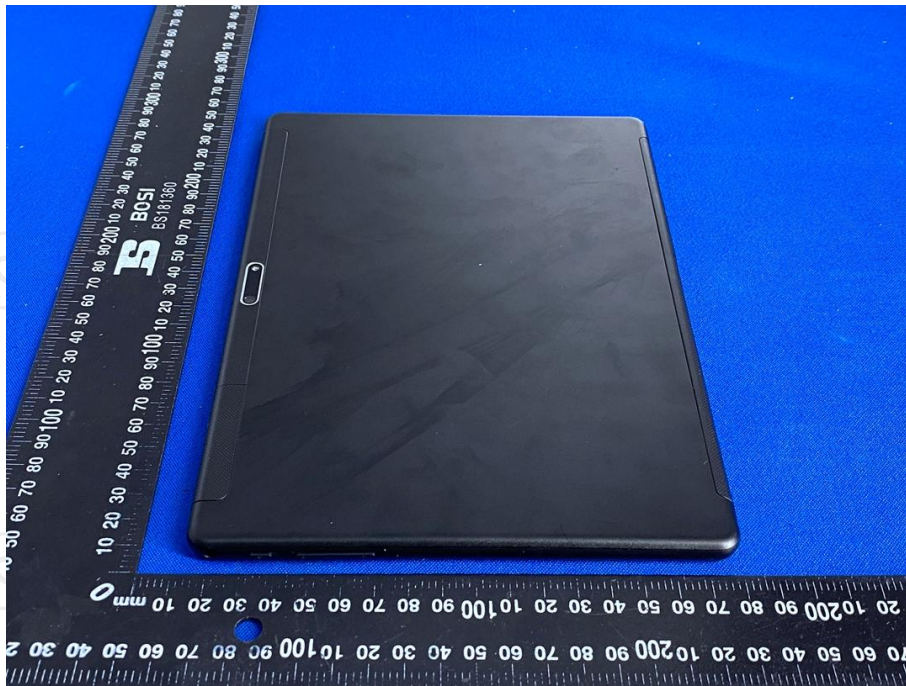


Appendix B: Photographs of EUT
Product: Tablet PC
Model: MemoPad T1
External Photos

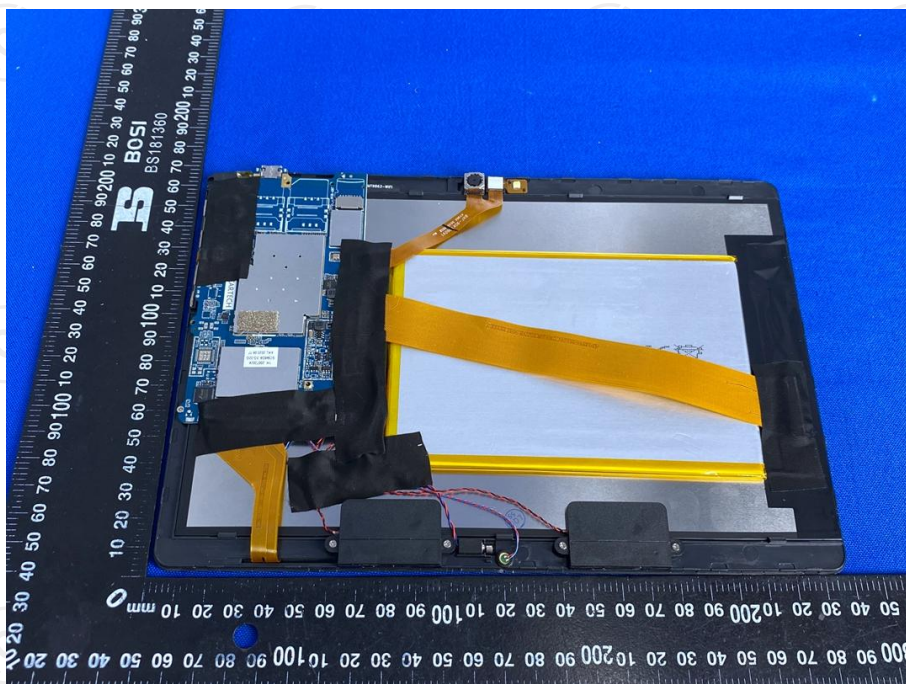
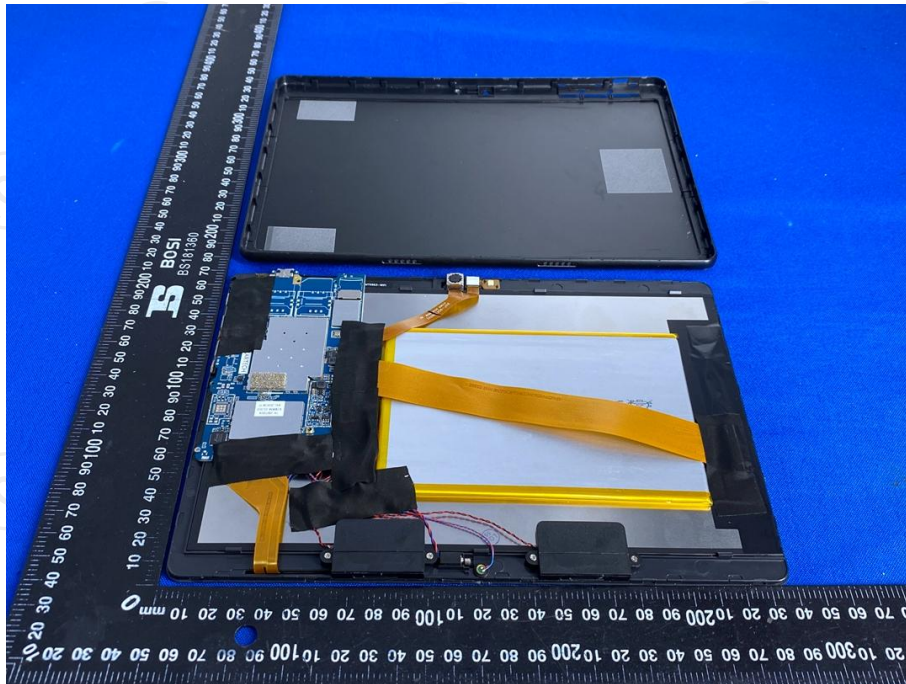


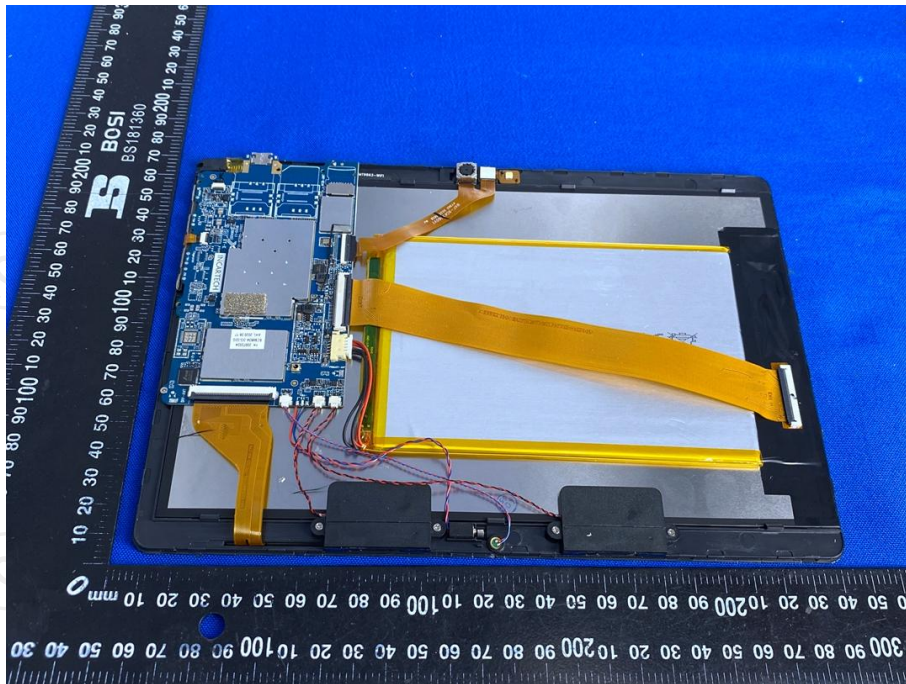


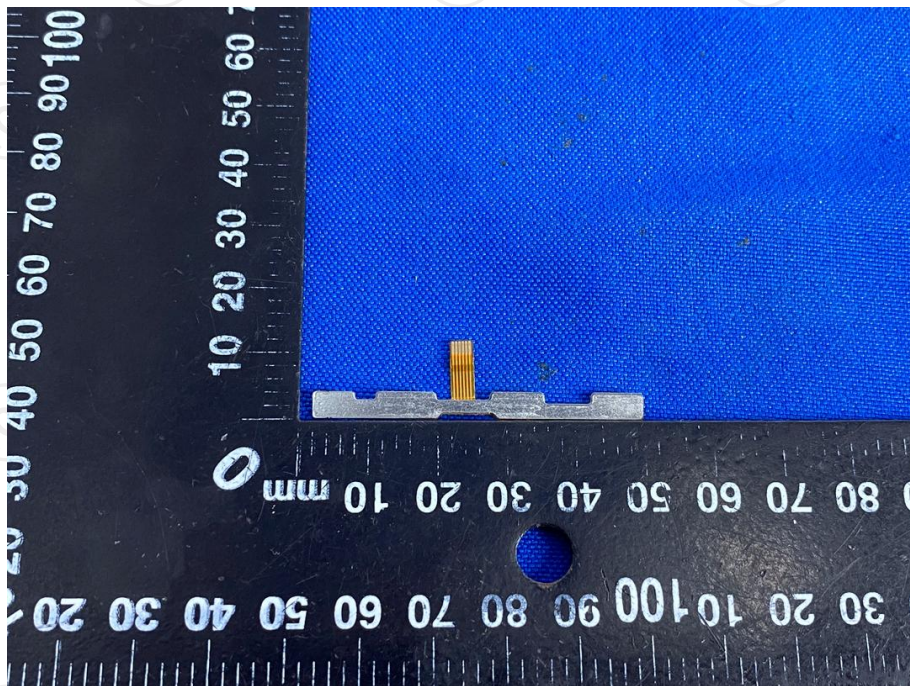
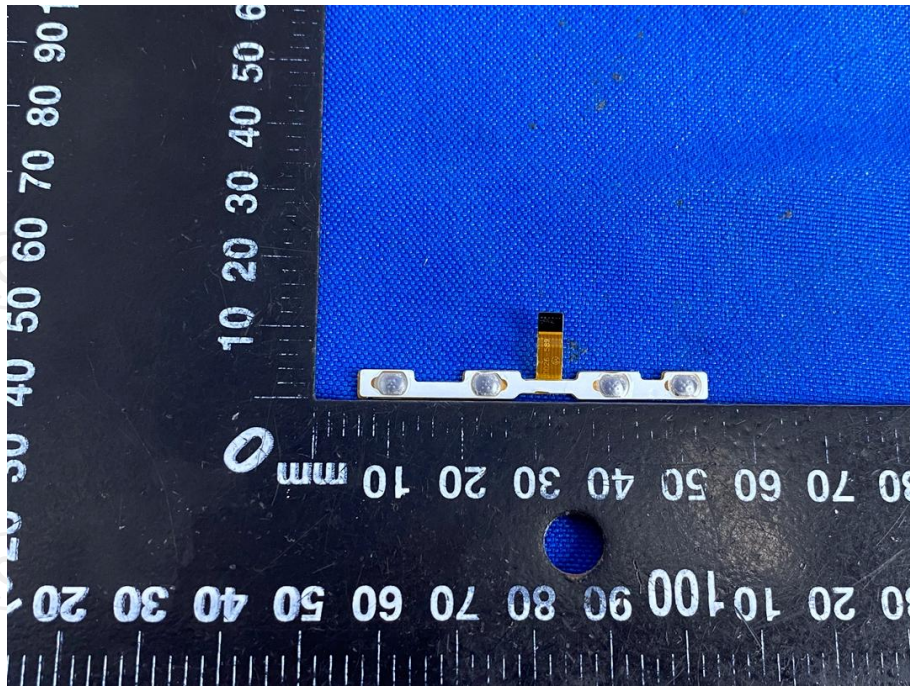


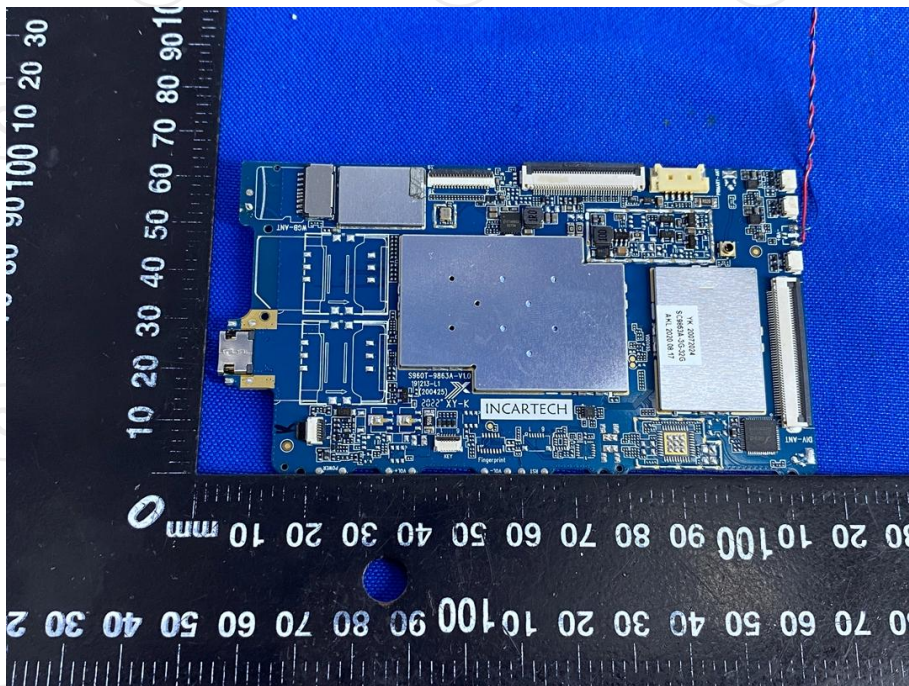
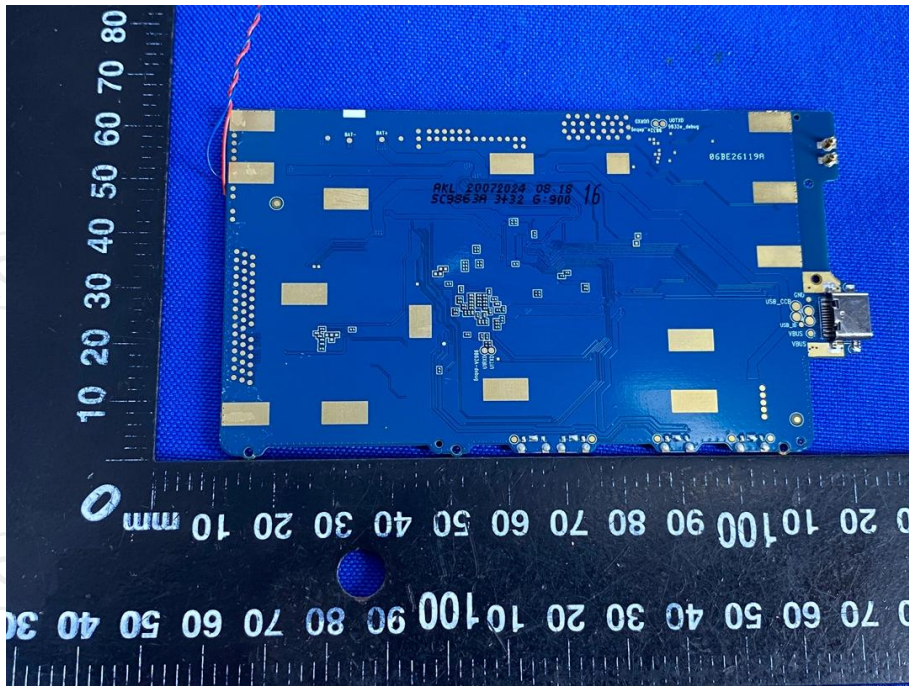


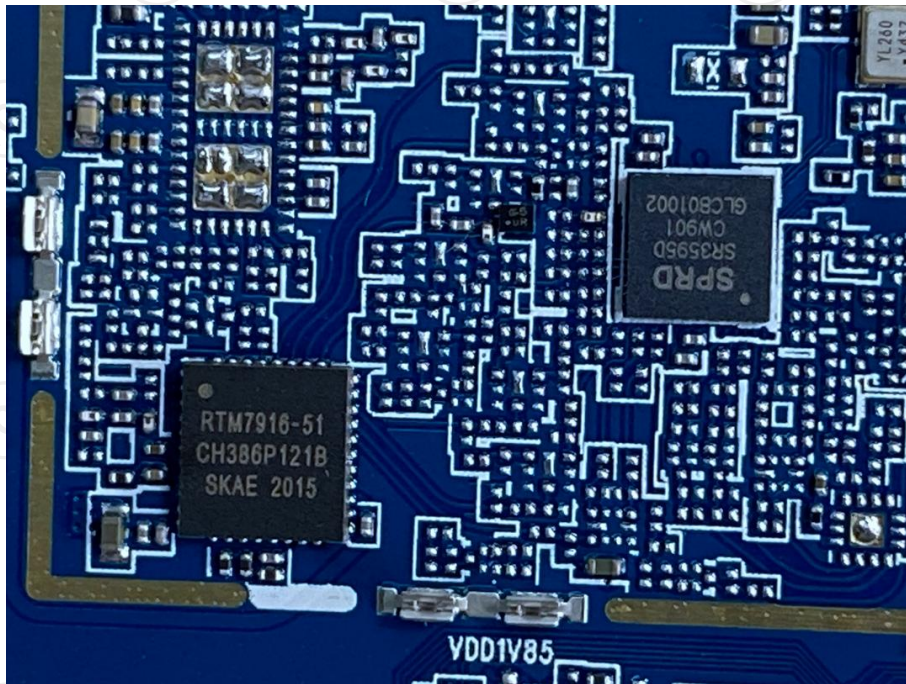
**Product: Tablet PC
Model: MemoPad T1
Internal Photos**

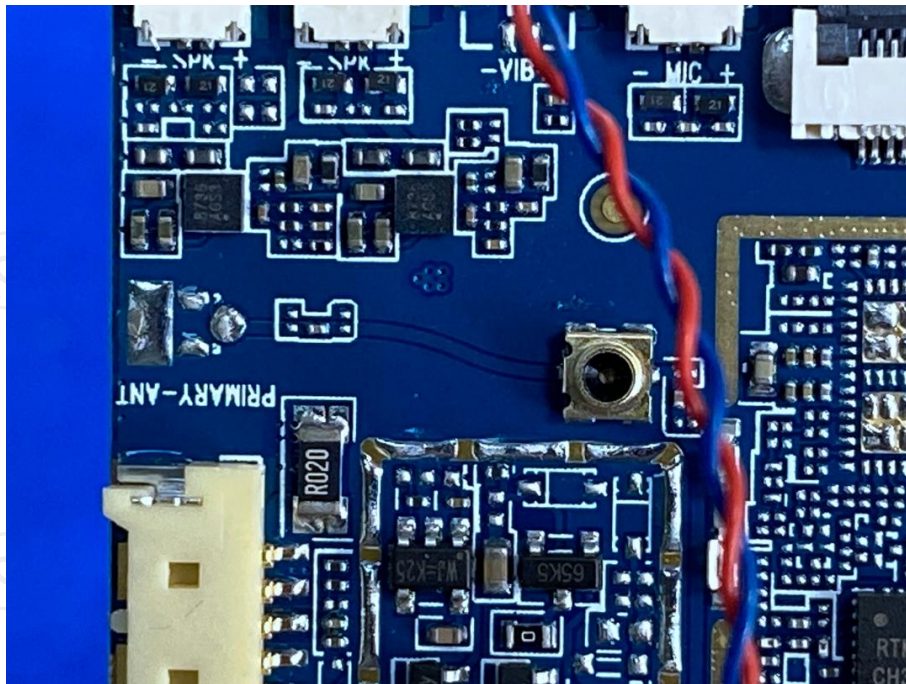


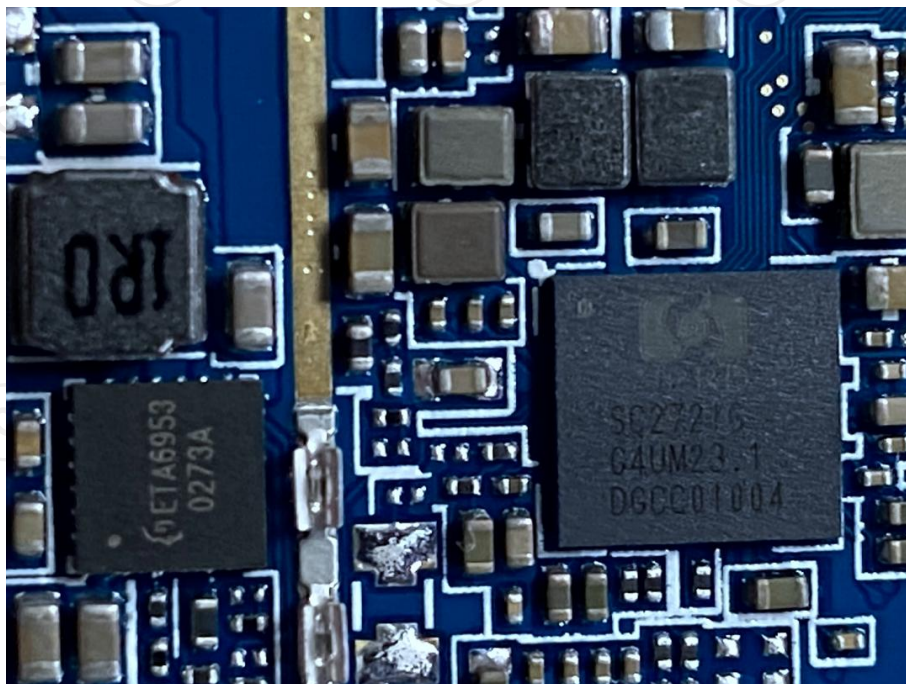
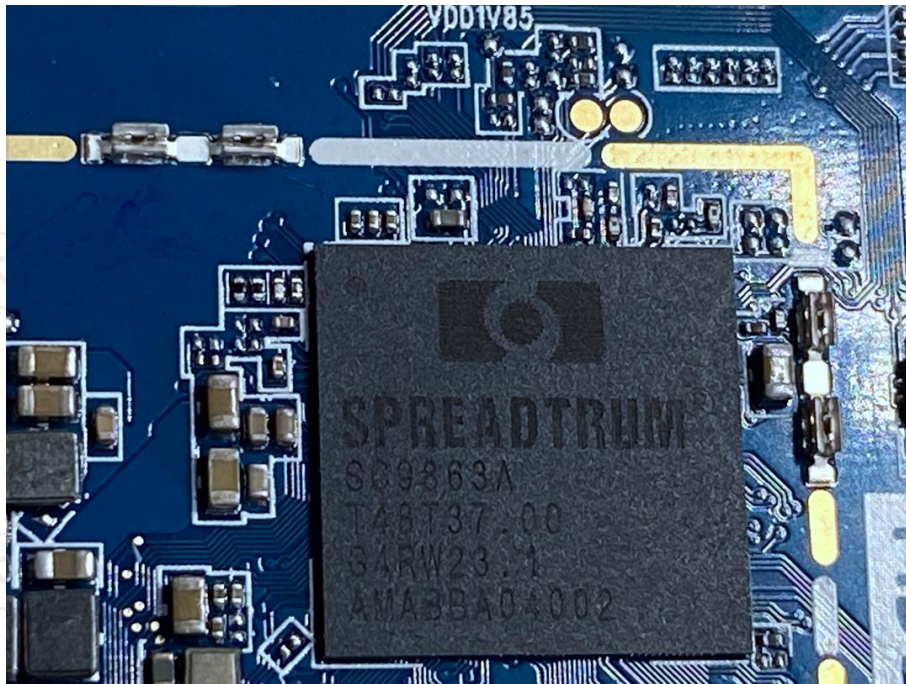


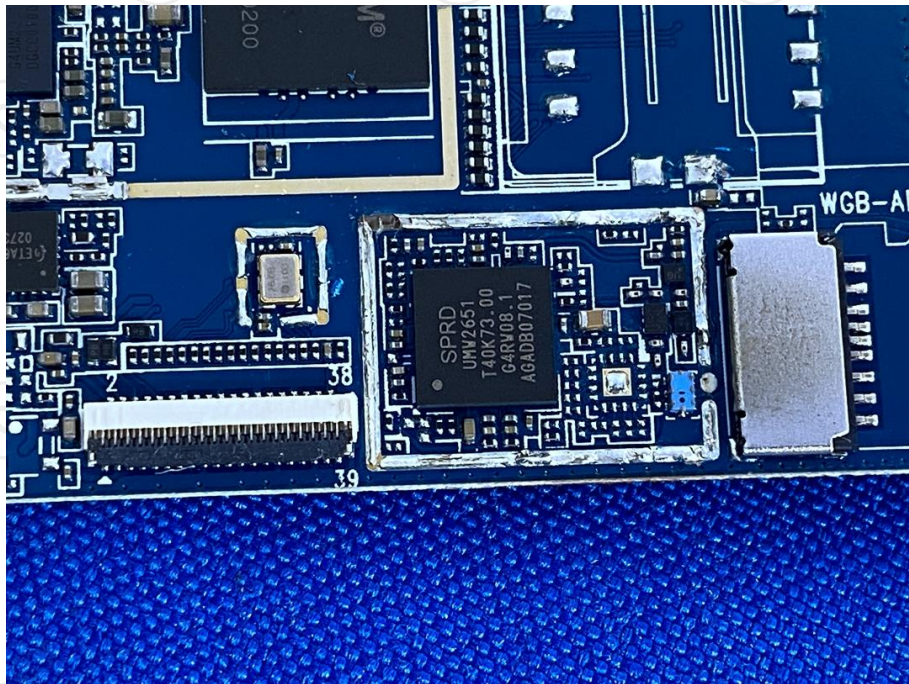
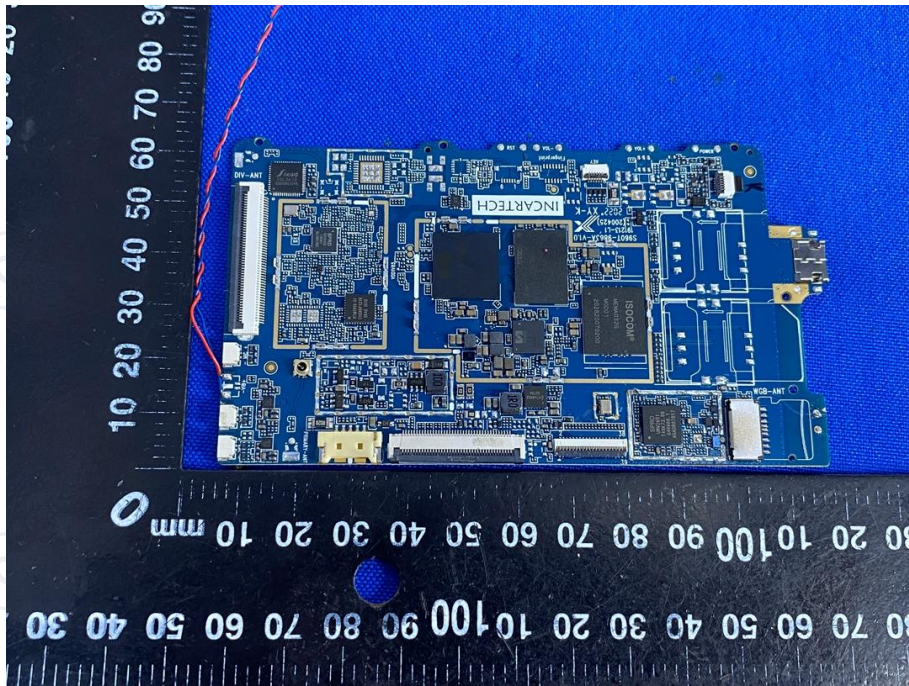


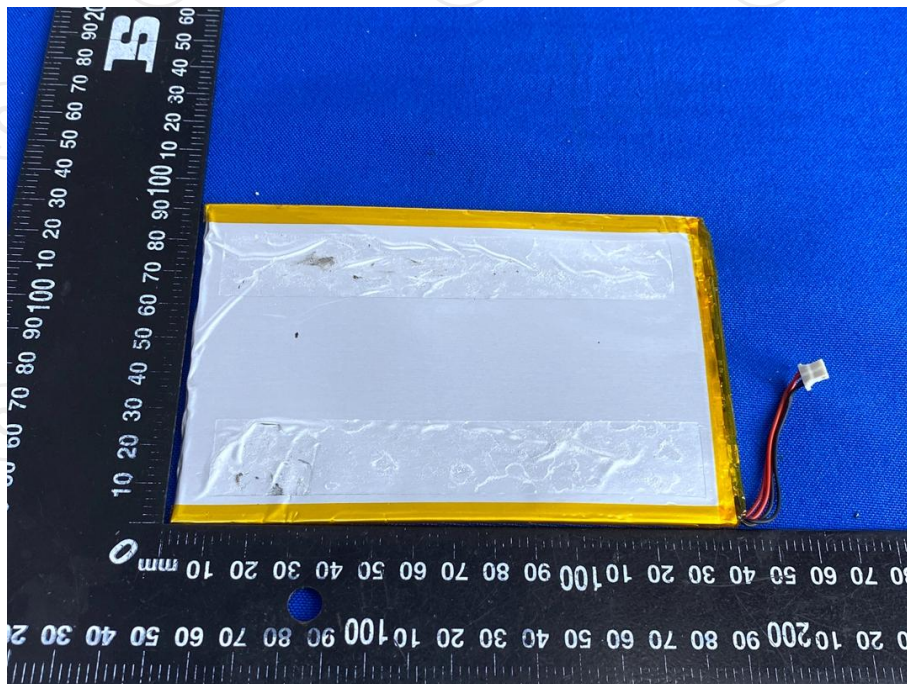
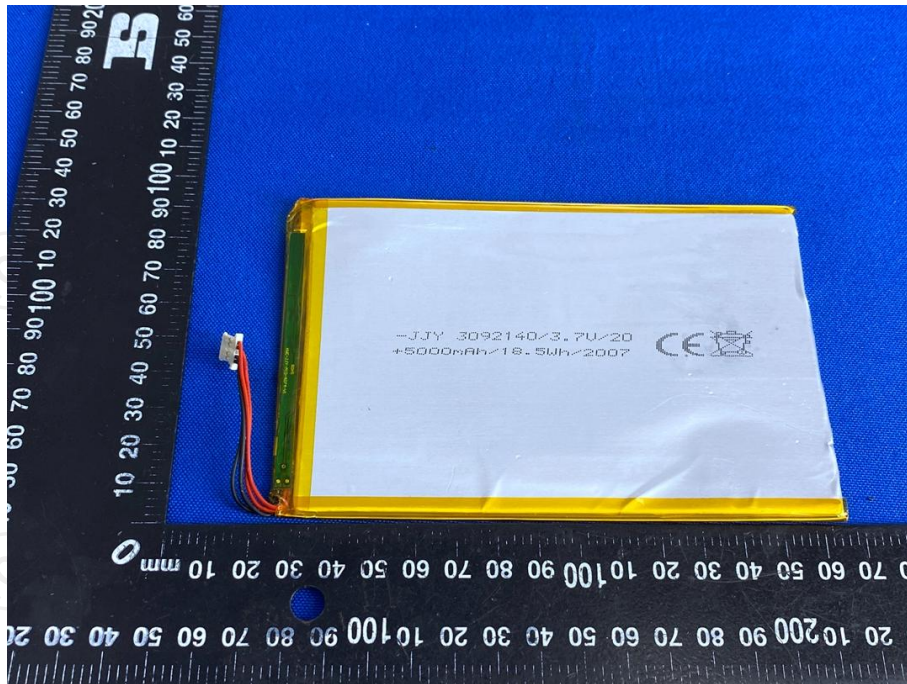












*****END OF REPORT*****