

### **FCC Requirement**

**FCC ID :S5V-IPC014**

Changes or modifications not expressly approved by the party responsible for compliance could void the user's authority to operate the equipment.

Note: This equipment has been tested and found to comply with the limits for a Class B digital device, pursuant to Part 15 of the FCC Rules. These limits are designed to provide reasonable protection against harmful interference in a residential installation. This equipment generates, uses, and can radiate radio frequency energy, and if not installed and used in accordance with the instructions, may cause harmful interference to radio communications. However, there is no guarantee that interference will not occur in a particular installation. If this equipment does cause harmful interference to radio or television reception, which can be determined by turning the equipment off and on, the user is encouraged to try to correct the interference by one or more of the following measures:

- Reorient or relocate the receiving antenna.
- Increase the separation between the equipment and receiver.
- Connect the equipment into an outlet on a circuit different from that to which the receiver is connected.
- Consult the dealer or an experienced radio/TV technician for help.

To maintain compliance with FCC's RF Exposure guidelines, This equipment should be installed and operated with minimum distance between 20cm the radiator your body: Use only the supplied antenna.

# User Manual

Baby Monitor

## CONTENTS

<b>I. Safety Guidance</b>	2
<b>II. Tablet Overview</b>	3
<b>III. Camera Overview</b>	3
<b>IV. Getting Started</b>	4
DT Baby Cam	4
Connecting the Tablet and Camera	4
Disconnect a Camera	8
<b>V. Operation</b>	8
Home Screen	8
Live Feed	8
Connecting Multiple Cameras	9
<b>VI. Help</b>	9
No Display	9
Connection Problems	9
Sound Problems	10
<b>VII. General Information</b>	10
Customer Support	10
Limitation of Liability and Indemnity	10

## I. SAFETY GUIDANCE

Read these safety precautions before using your device and store them for possible future reference. Always follow these basic safety precautions when using your Mobile device. This reduces the risk of fire, electric shock, and injury.

- Do not expose this product to rain or moisture.
- Keep the device out of direct sunlight and heat sources.
- Protect the power cord.Route power cords so that they are not likely to be walked on or pinched by items placed on or against them.Pay particular attention to the point where the cord attaches to the device.
- Only use the AC adapter included with the device.Using any other power adapter voids your warranty.
- Do not remove the cover.There are no user-serviceable parts inside.
- If the charger cord is damaged,have it repaired by the manufacturer, its service or a similarly qualified person in order to avoid any hazard.
- The charger is not intended for use by persons (including children) with reduced physical, sensory or mental capacity. Persons who have not read the manual, unless they have received explanations by a person responsible for their safety and supervision should not use this unit.
- Children should be monitored to ensure that they do not play with the charger.
- The charger should always be readily accessible.
- The device should not be exposed to dripping or splashing water.
- No objects filled with liquids such as vases shall be placed on the device.
- Always leave a minimum distance of 10 cm around the unit to ensure sufficient ventilation.
- Naked flame sources, such as candles, should not be placed on top of the device.
- The device is intended for use only in a temperate climate.
- CAUTION: Danger of explosion if battery is incorrectly replaced or not replaced by the same type or equivalent.
- The battery should not be exposed to excessive heat such as sunshine, fire or similar.
- Different types of batteries, new and used batteries should not be mixed.
- The battery must be installed according to the polarity.
- If the battery is worn, it must be removed from the product.
- The battery must be disposed of safely. Always use the collection bins provided (check with your dealer) to protect the environment. This mobile device conforms to guidelines for exposure to radio frequency.

This mobile device conforms to guidelines for exposure to radio frequency.

Your mobile device is a radio transmitter and receiver. It was designed to meet the limits recommended by international guidelines on the exposure to radio-waves.

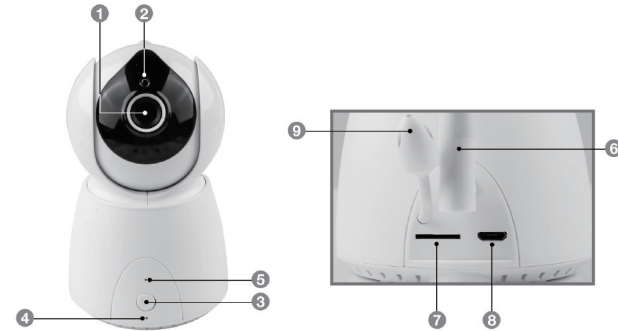
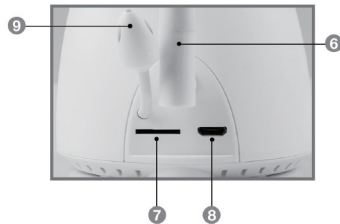
### Radio Frequency Interference

Radio frequency emissions from electronic equipment can interfere with other electronic equipment and can cause malfunctions. Although this mobile device has been designed, tested and manufactured in accordance with the EU regulations on radio frequency emissions, the mobile device's wireless transmitter and electrical circuits can cause interference with other electronic equipment. We recommend to take caution when traveling.

### III. CAMERA OVERVIEW

- 2.4 GHz Wi-Fi Connectivity
- Motorized 350° Pan/Tilt/Zoom
- HD Resolution
- H.264 Video Compression
- Micro SD Card Slot

- |  |                        |                       |                    |
|--|------------------------|-----------------------|--------------------|
| 1. Main Camera Lenses                  | 2. Night Vision Sensor | 3. Power ON/OFF       | 4. Indicator Light |
| 5. Microphone                          | 6. Antenna             | 7. Micro SD Card Slot | 8. Micro USB       |
| 9. The temperature and humidity sensor |                        |                       |                    |



### IV. GETTING STARTED

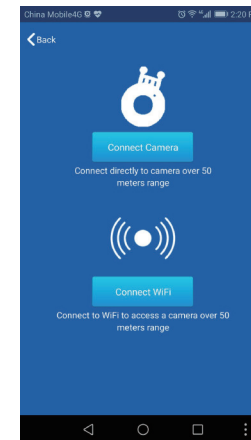
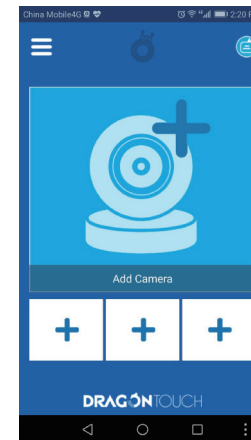
Before starting, make sure that the tablet has a sufficient charge and that the camera is plugged in. The **DT Baby Cam** app comes pre-installed on the tablet. If you want to install it on your own tablet and cellphone, head to the Google Play store or the App Store and download the **DT Baby Cam** app.



#### Connecting your own Tablet / Cellphone and Camera

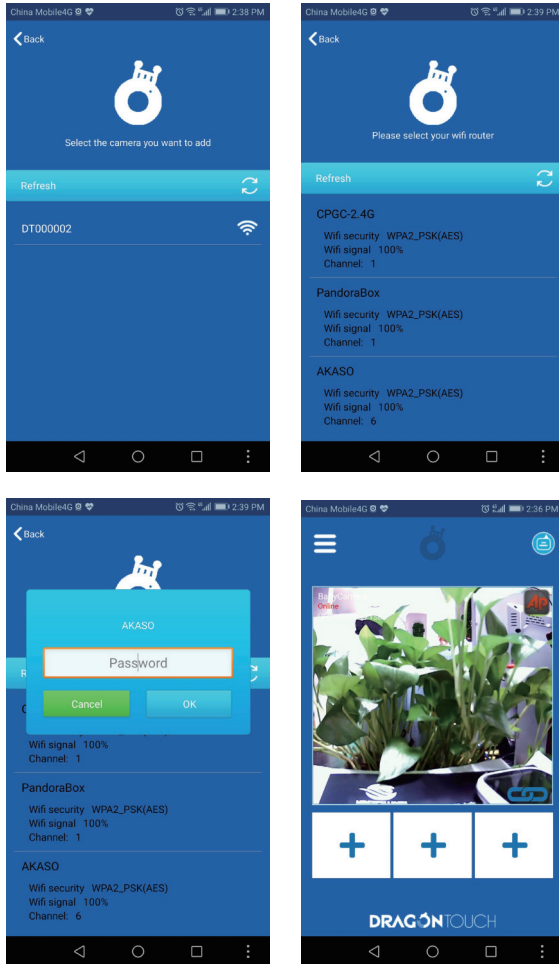
##### Wi-Fi connection for Android system

1. Open the DT Baby Cam app and select "Add Camera" from the home screen.



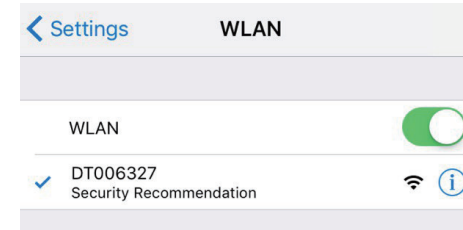
2. You will be given two options; connect directly or connect through Wi-Fi. Select "through Wi-Fi".

Wi-Fi: Use this option when trying to access the camera from a remote location. You can also set up multiple cameras using Wi-Fi.

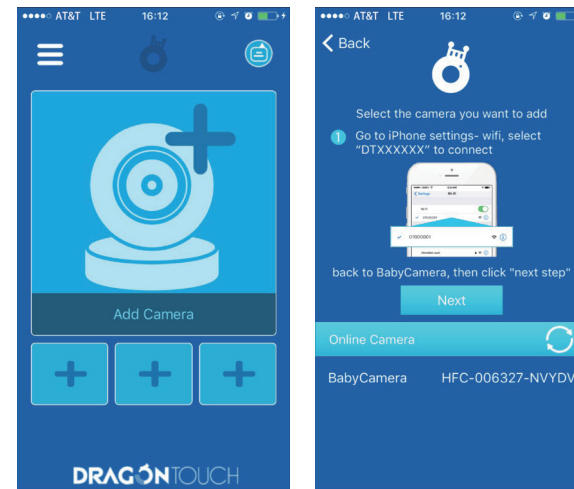


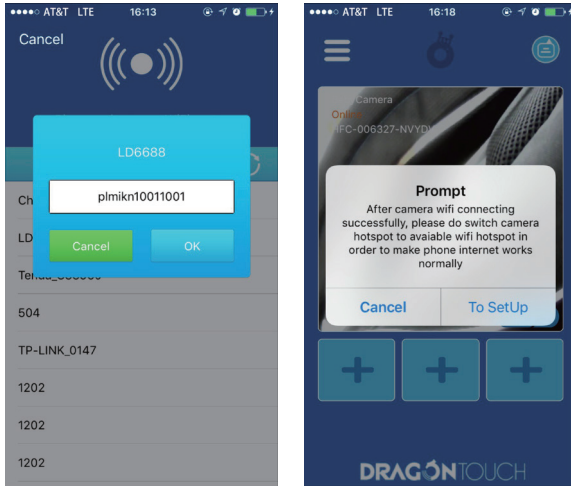
### Wi-Fi connection for iOS System

1. Enter to your tablet/cellphone Set-up interface.
2. From the Wi-Fi network list, select your camera to connect. The camera's name will be "DTxxxxxx" (x=the first six digits of the HFC number on the bottom of the camera).



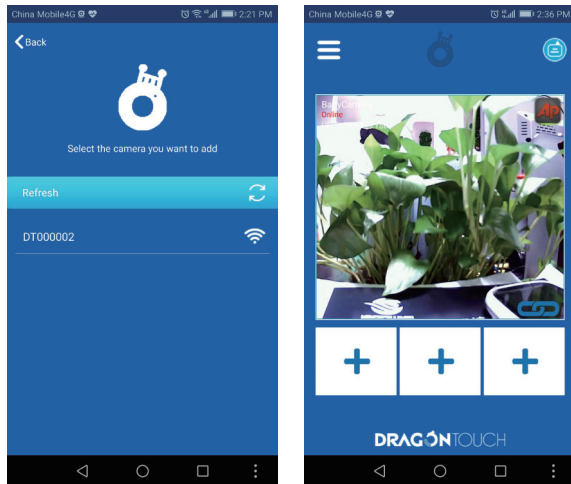
3. If successfully connected, the app will return to the main screen and the camera's feed will now be viewable.





### Direct Connection for all devices:

This option is just for in-home use. **(NOT FOR REMOTE CONNECTION)** The camera and live feed are most responsive when using this type of connection.



### Disconnect a Camera

To disconnect a camera press and hold the live feed screen on the main page. Select the "X" in the top right corner and then select "OK" to confirm.

## V. OPERATION

### Home Screen

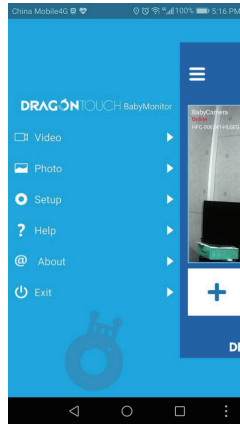
- ⊞ Press to switch to Wi-Fi connection.
- 📶 Press to switch to direct connection.
- 🔗 Indicates the camera and tablet are connected.

### Live Feed

- ↔ Selecting this will rotate the camera left and right 360° continuously. Press again to stop.
- ↕ Selecting this will rotate the camera 120° continuously up and down. Press again to stop.
- ☀ Adjust the brightness
- 🌓 Adjust the contrast
- 📄 Select between different types of viewing.  
Preferred Speed: For most responsive viewing  
Preferred Quality: For best quality picture  
HD Mode: Best response and quality
- 📺 Alternate landscape and portrait view
- ▶ Remotely play music from the camera. Selecting this opens a play menu.
- 📷 Press to take a photo. The photo is stored in the app's photo section.
- 📹 Press to record a video. Press again to stop. The video is stored in the app's Video section.
- 🔊 Toggle the audio feed from camera to tablet
- ↶ Return to app home screen
- 🌙 Night Vision. Press to turn ON/OFF

### APP Menu

1. Video: Choosing video records to play. There has Client and Remote two modes, Client mode is tablet/cellphone's videos, Remote mode is camera's TF card videos.
2. Photo: It is a place that Client photos storage
3. Setup: It is Restart, Alarm, Time and Record setup key.
4. Help: There has some problems you will meet, if you don't know how to operate, please refer to it.



### Connecting Multiple Cameras

The DT Baby Cam app can connect up to four cameras at the same time. To add another camera:

1. Make sure that the first camera is set to a Wi-Fi connection.

NOTE: Multiple feeds only works when cameras are connected through Wi-Fi. Cameras using a direct connection will not operate when using multiple cameras, they must be switched to Wi-Fi.

2. Select one of the three add boxes below the main live feed area. Follow the on screen instructions until the second camera is connected.

3. Repeat the process to add additional cameras.

NOTE: The DT Baby Cam app is designed to work with other camera brands. If using another camera besides a DT camera, be sure that it can connect to Wi-Fi.

### Connect to a Computer

Connect the tablet to a computer for copying and deleting tablet contents, Use the provided micro USB cable to connect and operate the tablet just like a USB storage device.

## VI. HELP

### No Display

- Make sure that all cameras are properly plugged in and that there is sufficient Wi-Fi coverage.
- Is the tablet on? Make sure that that the tablet is on and has a sufficient charge.
- Make sure that the camera was correctly setup when connecting. The camera's name is "DTXXXXXX" (X=first six digits of HFC number on the bottom of the camera).

### Connection Problems

- Make sure that all cameras are properly plugged in and that there is sufficient Wi-Fi coverage.
- Make sure that the tablet and camera are within range(only when using direct connection).

- Make sure that the tablet and camera are within range(only when using direct connection).
- Reset the units by disconnecting them from the electrical power.Wait about 15 seconds before reconnecting.Allow up to one minute for the camera and the tablet to synchronize.
- See "Connecting the Tablet and Camera" on page 6 for instructions on camera and tablet syncing.

### Sound Problems

- The camera and tablet may be too close.Move them further apart.
- Make sure the tablet and the camera are within range(direct connection only).
- Make sure the baby and parent units are no near other electrical equipment,such as a television, computer or cordless/mobile telephone.
- Other 2.4GHz items,such as wireless networks(Wi-Fi routers),Bluetooth systems,or microwave ovens, may cause interference with this product,so keep the tablet away(at least 5ft[1m])from these types of products,or turn them off if they appear to be causing interference.
- If the signal is weak, try moving the tablet and/or camera to different positions in the Refer to the in app help section for more help.

## VII. GENERAL INFORMATION

### Customer Support

Send E-mail to [cs@tabletextpress.com](mailto:cs@tabletextpress.com) for customer support regarding your device. For US domestic customer service, please call 301-670-7335

### Limitation of Liability and Indemnity

To the maximum extent permitted by applicable law, Dragon Touch shall not be liable for any damages suffered as a result of using, modifying, contributing, copying, distributing, or downloading the materials, use of the Dragon Touch User Manual or use of any Dragon Touch be liable for any indirect, extraordinary, exemplary, punitive, special, incidental, or consequential damages(including, without limitation, loss of data, revenue, profits, use or other economic advantage) however arising, whether for breach of contract of in tort,even if Dragon Touch has been previously advised of the possibility of such damage.You agree that you have sole responsibility for adequate protection and backup of data and/or equipment used in connection with the product and software and will not make a claim of any nature against Dragon Touch for lose data,of the materials.You agree to indemnify,hold harmless and defend Dragon touch, together with its affiliates, parent and subsidiary entities, successors, assigns, partners, managers, members, employees, officers, directors and shareholders, from and against any and all demands, actions, causer of action, claims, costs and expenses(including,without limitation,reasonable attorneys'fees, charges and disbursements, as well as the cost of in-house consul and appeals)arising from of related to Dragon Touch, the use of The Dragon Touch User Manual or any Dragon Touch product and/or software. Some jurisdictions do not allow the exclusion or limitation of incidental or consequential damages, so the above limitation or exclusion may not apply to you.

This device complies with Part 15 of the FCC Rules, Operation is subject to the following two conditions:

- (1) This device may not cause harmful and interference
- (2) This device must accept any interference received,including interference that may cause undesired operation.