

POST FLIGHT

After you are done flying the Drone make sure the battery pack on the quadcopter is disconnected and the transmitter power is turned off. If you are not going to use the quadcopter for a long period of time, please remove the AA batteries to prevent the batteries from draining or leaking.

AUTOMATIC SHUTDOWN OVERRIDE FUNCTIONS

For safety precautions, the drone will automatically shut down when the following situations occur:

1. When the drone's battery is running low.
2. When one or more of the drone's propellers gets into a collision impact or any form of entanglement.

PROBLEM	CAUSE	SOLUTION
Quadcopter is unresponsive. The Transmitter light keeps flashing. Quadcopter is unresponsive.	Transmitter is not syncing with quadcopter. Transmitter and/or quadcopter is not powered ON. Transmitter batteries are installed incorrectly. Transmitter batteries are drained.	Repeat the power up process. Turn both transmitter and quadcopter ON. Install the batteries with the correct polarity. Install fresh batteries to the transmitter.
Transmitter light is ON. Quadcopter is unresponsive.	Quadcopter's battery pack is drained.	Charge the quadcopter's battery pack.
Quadcopter's rotors spins but doesn't take off.	Rotor blades are damaged. Quadcopter's battery pack is drained.	Replace the damaged rotor blades. Charge the quadcopter's battery pack.
Quadcopter is shaking when flying. Quadcopter moves while hovering without transmitter input.	Quadcopter is not on a flat surface before attempting to take off. Rotor blades are damaged.	Place the quadcopter on a flat surface before attempting to take off. Replace the damaged rotor blades.
Quadcopter will move forward after adjusting the trim.	Gyrocompass midpoint is off.	Adjust the trim. Turn off both transmitter and quadcopter. Go through power on process and make sure you place the quadcopter on a flat surface before taking off.

Email:cs@akasotech.com

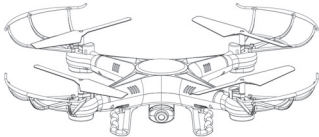
SPECIFICATIONS, COLORS AND CONTENT MAY VARY FROM ILLUSTRATIONS

MADE IN CHINA

WARNING:
CHOKING HAZARD - Small parts. Not for children under 3 years.

AKASO®

INSTRUCTION MANUAL

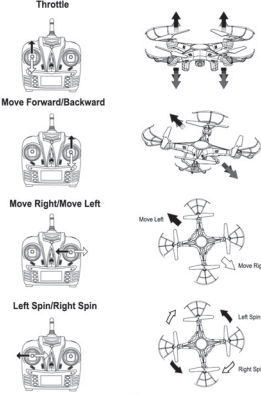


14+
FOR AGES 14 AND UP

FLYING THE DRONE

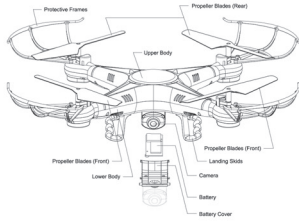
Before flying the quadcopter for the first time please read the instructions carefully and make sure you fully understand how to control your drone.

BASIC FLYING CONTROLS

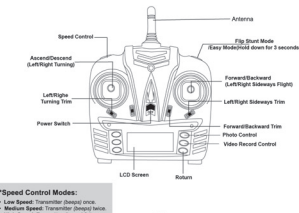


6

GENERAL DRONE PARTS



TRANSMITTER SPECIFICATIONS



*Speed Control Modes:
• Low Speed: Transmitter (Simple) only.
• Medium Speed: Transmitter (Simple) only.
• High Speed: Transmitter (Simple) only.

3

INTRODUCTION

Thank you for purchasing this amazing World Tech Toys product. This drone is suitable for indoor and outdoor flight. Please carefully read the entire manual before operating this quadcopter and keep it for reference in the future.

SAFETY & PRECAUTIONS

1. Important Instructions
(1) This product is not a toy but a precision piece of equipment with integrated technologies of mechanics, electronic, air dynamics and radio frequencies. In order to avoid accidents, the operator must read these instructions carefully. Use safety precautions when operating. If operated incorrectly, serious physical injury and/or property loss may occur.
(2) This product is suitable for operators with previous hobby flying experience, age 12 and up.
(3) Only fly in a safe environment that is legal for remote control flying.
(4) We do not take any responsibility for the operation and control of this device and related safety responsibilities.
(5) We entrust authorized dealers to provide technology support and after sales service, please contact your place of purchase with any operating questions or repairs.

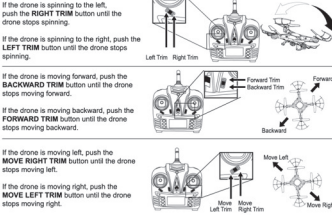
2. Safety Instructions
(1) Operate far away from obstacles and crowds.
This quadcopter has uncertain flying speed and conditions which present potential danger. Fly away from people and animals, high buildings, high voltage wiring, etc. Avoid bad weather conditions, wind, rain, thunder, and other conditions to ensure a safe and fun flying environment.
(2) Avoid high temperatures.
This quadcopter is made of metal, carbon fiber, plastic, electronic components and other materials. Keep away from any heat source and avoid using in high temperatures such as hot sunny days to avoid transformation and broken parts resulting from the heat.

3. Flight Environment
The inside of this quadcopter is integrated with precision electric and mechanical parts, avoid water and wet environments. Water can enter the aircraft and result in part breakdown and accidents may occur.

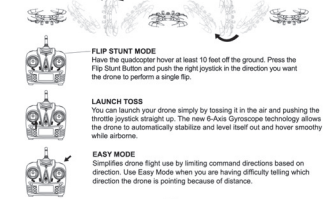
3. Attention Before Flying
(1) It is recommended that the flying area is at least an area of 258 x 258 x 158.
(2) Be sure that the transmitter and quadcopter batteries are fully charged.
(3) Be sure that the throttle is at its lowest position to avoid premature flight.
(4) Before playing turn on the quadcopter first, then turn on the transmitter. Incorrect operation may result in failure and the possible influencing of other devices in areas.
(5) Ensure that all plugs and wires are secure and in place, rocking during flight may loosen over time.

ADJUSTING THE TRIM

When drone moves with no directional transmitter input, adjust the trim controls until hovering is stable.

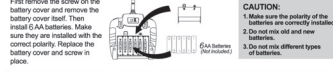


SPECIAL ACTIONS

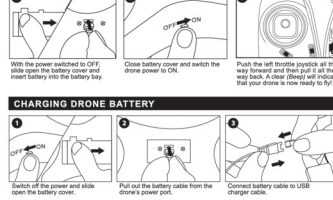


7

INSTALLING TRANSMITTER BATTERY



INSTALLING DRONE BATTERY



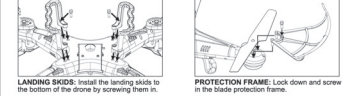
USB CHARGER SPECIFICATIONS		
LED Indicator		
No Light	Red Light	Charging
Idle and Charge Completion		

BATTERY PACK SPECIFICATIONS		
Battery Type	Battery Specification	Charge Time
LiPo Battery	3.7V 100mAh	Flight Duration 5.5 - 6.5 minutes Charging Time 80 - 100 minutes

CAUTION WHILE CHARGING:
Do not charge with batteries still installed. Do not charge battery unattended. Do not immediately charge after use. Do not overcharge battery. Metal charge time is 80-100 minutes. Overcharging can cause a catastrophic failure. Always charge in dry and ventilated areas away from any heat source or flammable materials. Always use the original USB charging cable provided. Promptly change and replace old or defective batteries.

4

INSTALLING LANDING SKIDS AND PROTECTION FRAME



INSTALLING DIGITAL CAMERA



USING THE DIGITAL CAMERA

1. SD Card Installation: Insert the SD card into the slot, lightly press until the SD card clicks into place. Press the SD card to open the card. The camera indicator WILL NOT LIGHT UP unless the SD card is properly inserted.
2. Indicator Lights of Camera:
 - Blue: Camera Standby Status
 - Red Light Blows Flashes: Video Recording Video
 - Red Light Flashes Continuously: About to Record Video
3. Dynamic State / Static State Functions: Turn on the drone, then lightly press the Record button. The self-run the recording process automatically and save the video onto the SD card. Press the Photo button and the indicator light changes to red. When the light flashes twice, a photo will be taken, which will then be saved onto the SD card.
4. Video / Photo Operations: Turn the drone off. Remove the SD card, then install it into a card reader (connected to the computer). Videos and photos can be viewed using media players. NOTE: Pictures cannot be taken while camera is in Video Recording Mode.

SYNCING AND LCD INTERFACE PROCEDURE

After installing the batteries, turn the transmitter switch to "ON". The power indicator light flashes and the signal icon "T" appears in the top left of the LCD screen, when there is no signal. After the transmitter successfully pairs with the drone, the transmitter will beep twice and the signal icon changes to "T". Push the Accelerated/Decelerated control to the top, then pull the control back to the bottom. The transmitter will beep once. The power indicator will light. The transmitter has successfully paired with the quadcopter and control information appears on the LED screen.

5

This device complies with Part 15 of the FCC Rules. Operation is subject to the following two conditions: (1) This device may not cause harmful interference, and (2) this device must accept any interference received, including interference that may cause undesired operation.

Caution: Changes or modifications not expressly approved by the party responsible for compliance could void the user's authority to operate the equipment.

NOTE: This equipment has been tested and found to comply with the limits for a Class B digital device, pursuant to part 15 of the FCC Rules. These limits are designed to provide reasonable protection against harmful interference in a residential installation. This equipment generates uses and can radiate radio frequency energy and, if not installed and used in accordance with the instructions, may cause harmful interference to radio communications. However, there is no guarantee that interference will not occur in a particular installation. If this equipment does cause harmful interference to radio or television reception, which can be determined by turning the equipment off and on, the user is encouraged to try to correct the interference by one or more of the following measures:

- Reorient or relocate the receiving antenna.
- Increase the separation between the equipment and receiver.
- Connect the equipment into an outlet on a circuit different from that to which the receiver is connected.
- Consult the dealer or an experienced radio/TV technician for help.