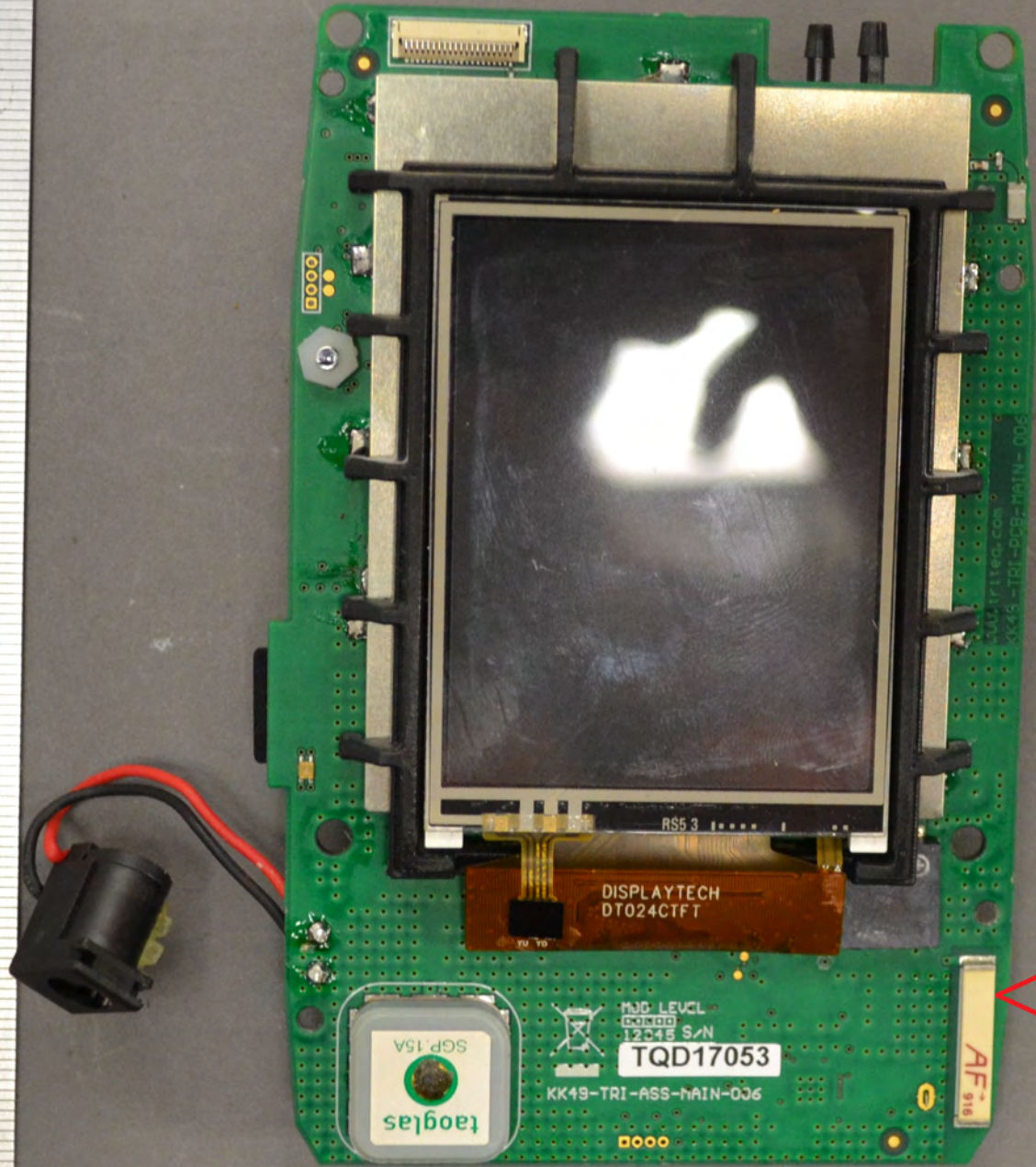
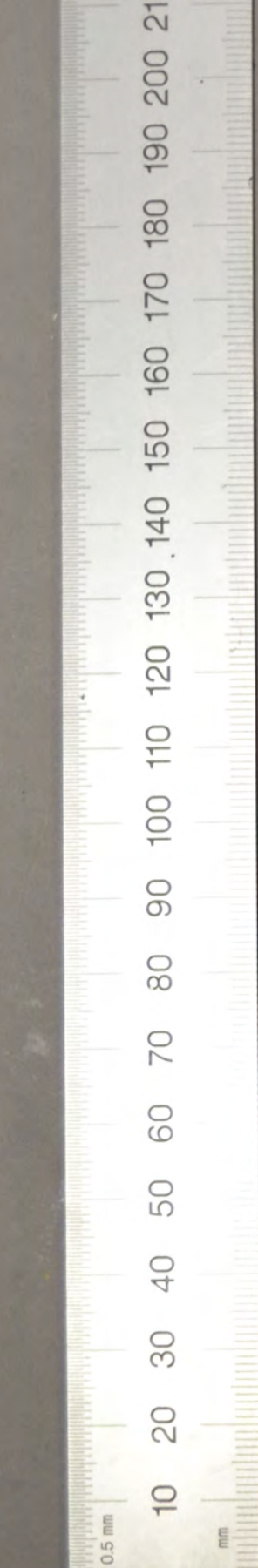


11494246

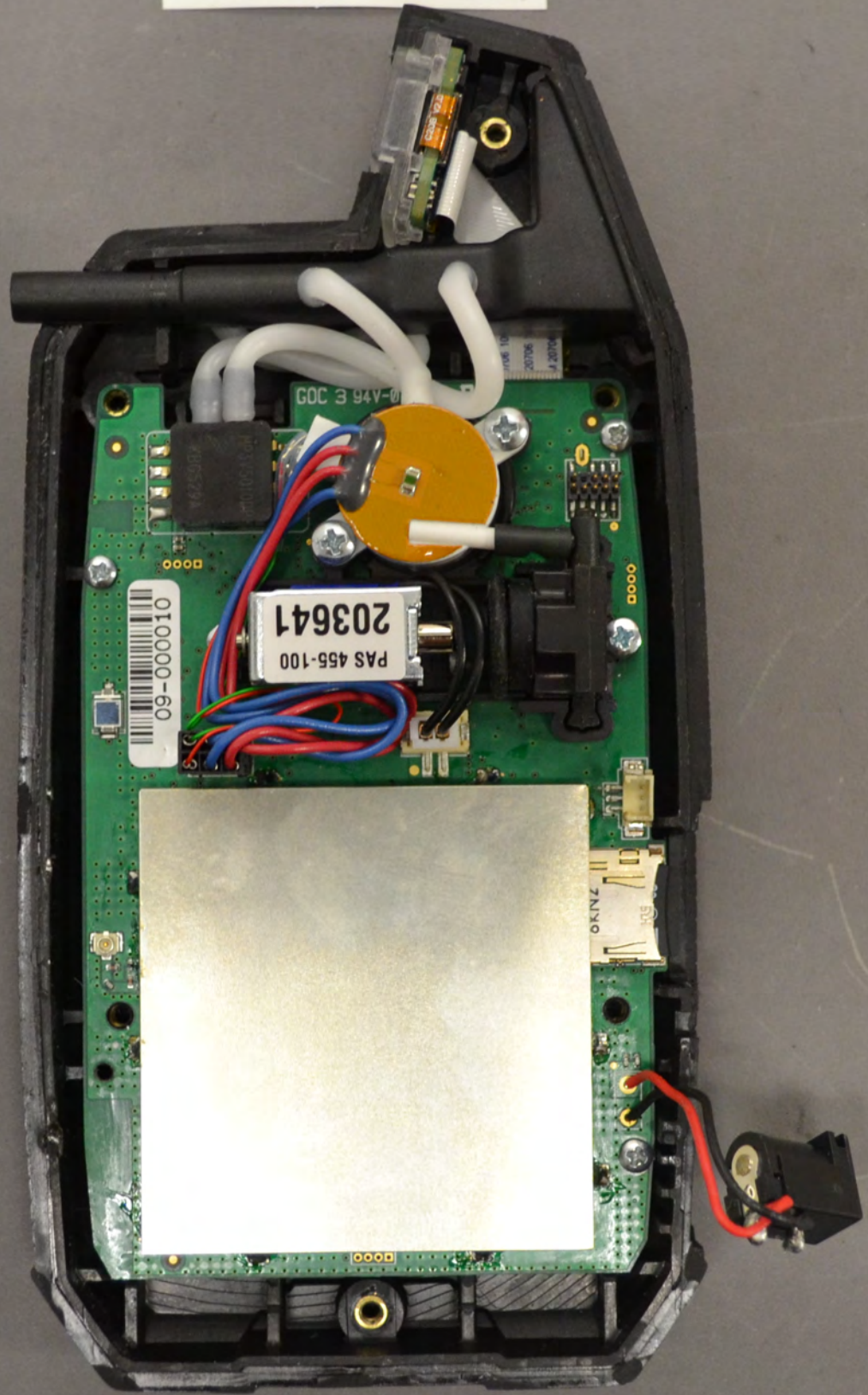


915 MHz  
Antenna

11494246



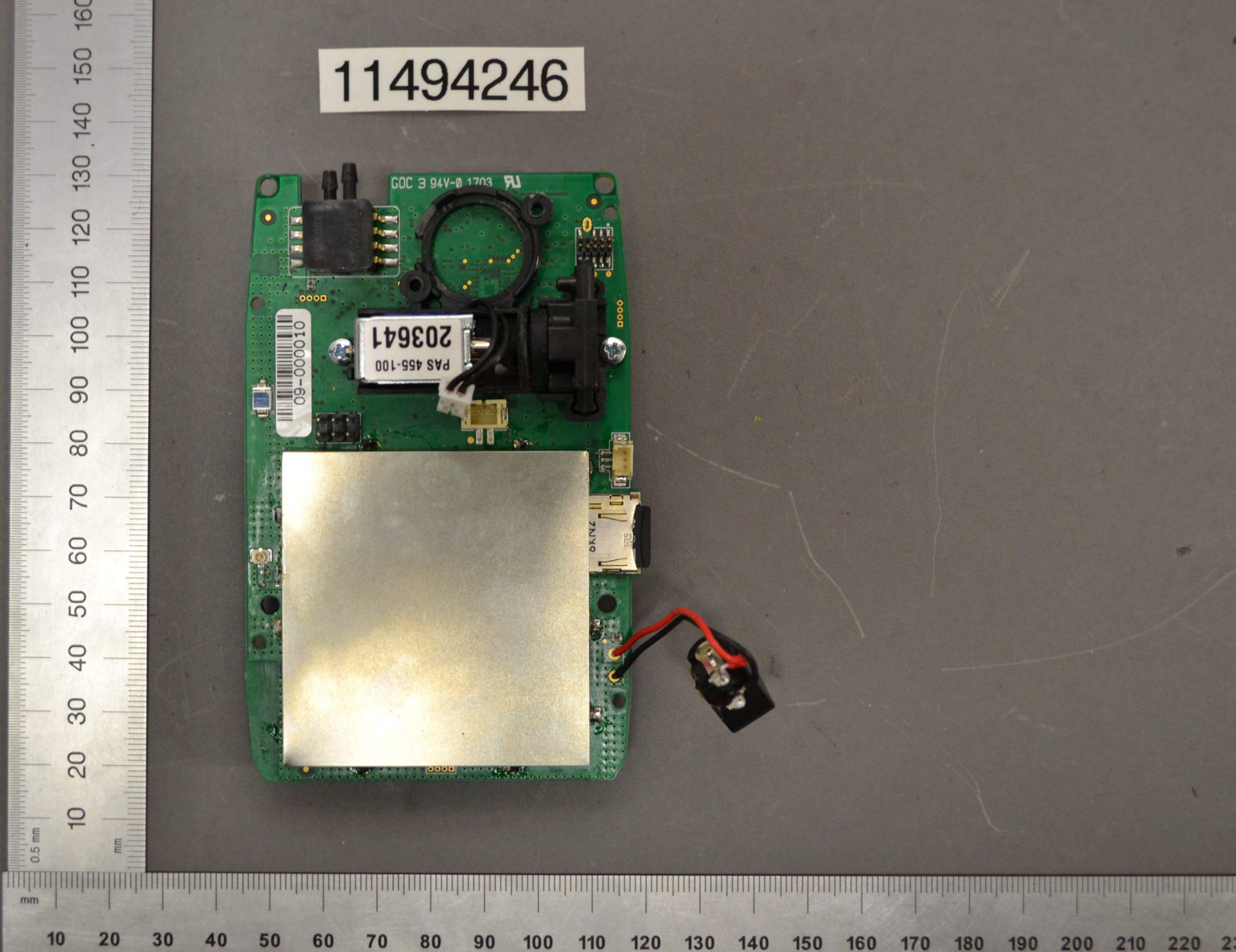
11494246



0.5 mm  
mm  
10 20 30 40 50 60 70 80 90 100 110 120 130 140 150 160 170 180 190

mm  
10 20 30 40 50 60 70 80 90 100 110 120 130 140 150 160 170 180 190 200 210 220 230 240 250

11494246



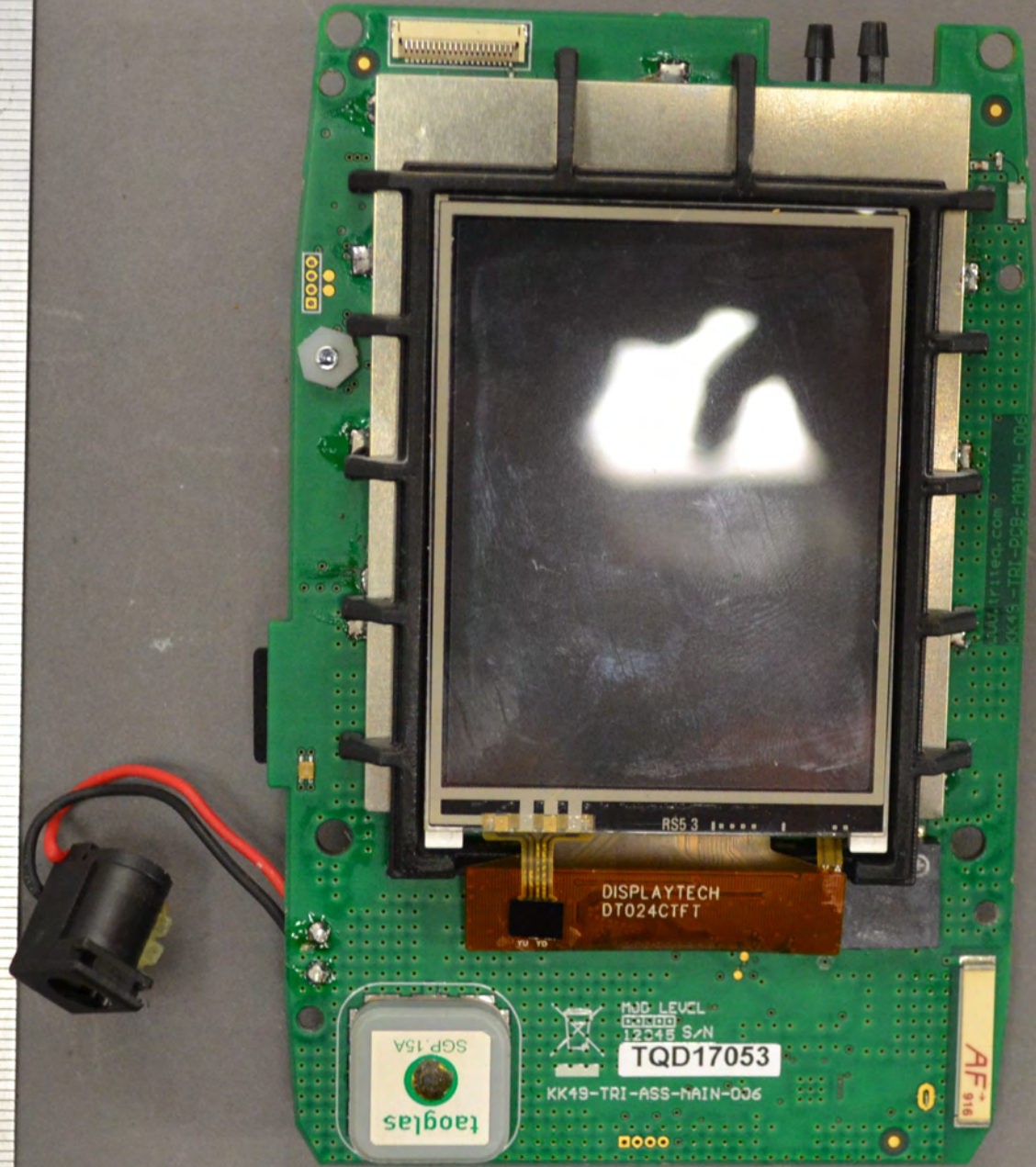
09-000010

PAS 455-100  
203641

GOC 3 94V-0 1703

OKNZ  
RIS

11494246



DISPLAYTECH  
DT024CTFT

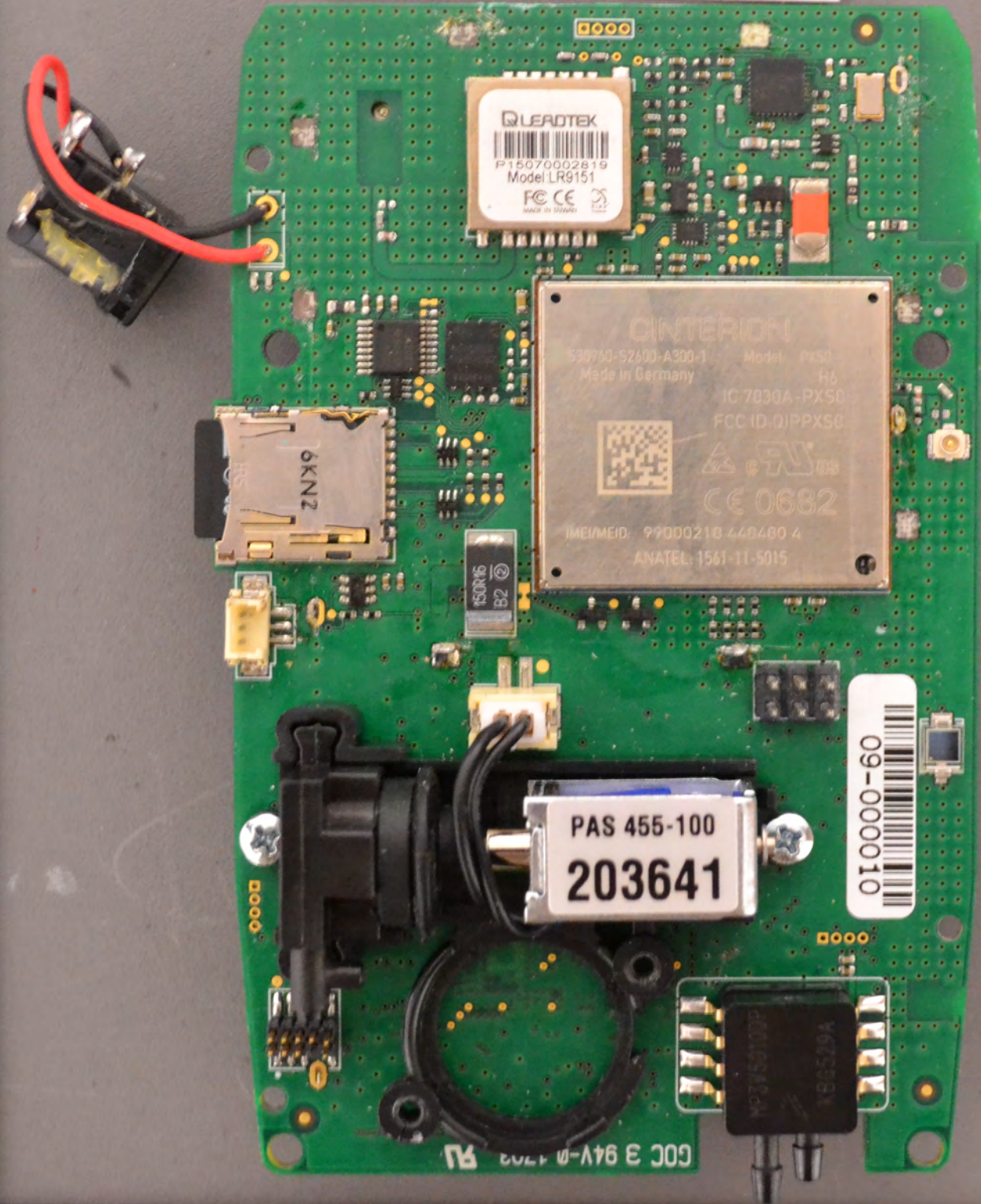
MJC LEVEL  
G0000  
12045 S/N  
TQD17053

KK49-TRI-ASS-MAIN-006

taoglas  
SGP 15A

AF  
918

11494246

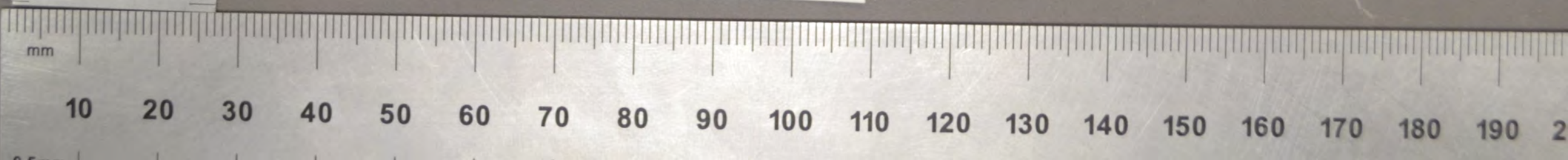
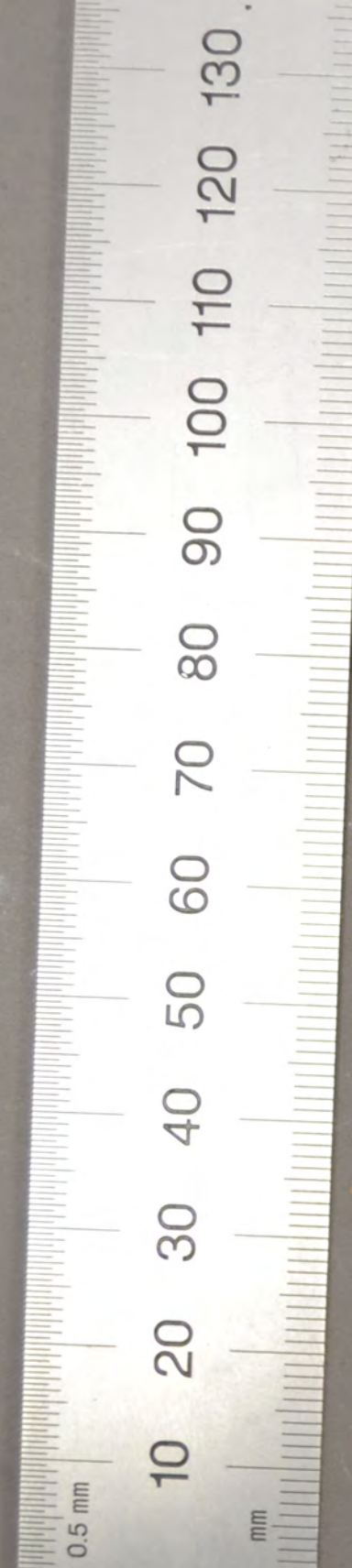


0.5 mm

mm

mm

10 20 30 40 50 60 70 80 90 100 110 120 130 140 150 160 170 180 190 200



11494246

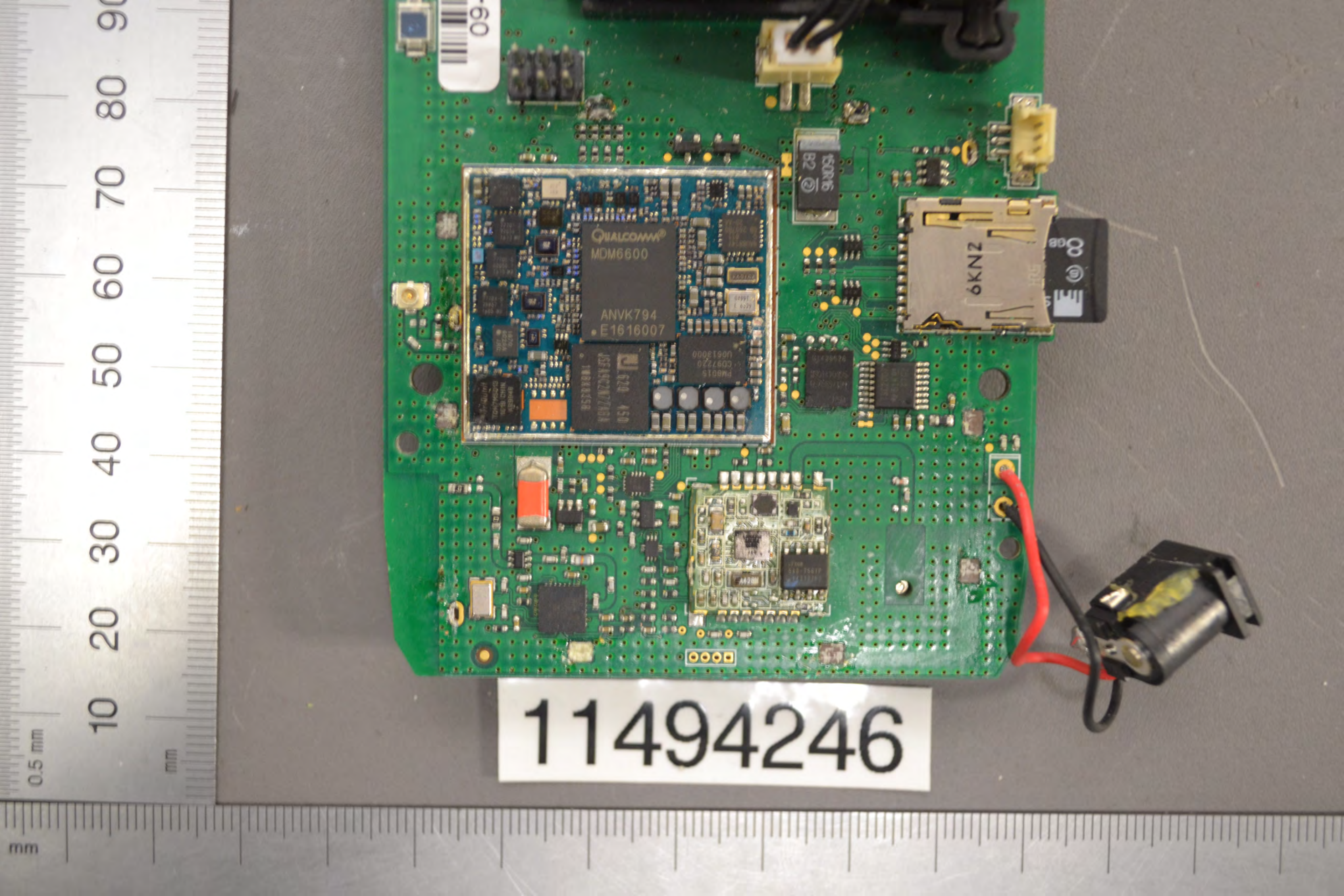
09-000010

PAS 455-100  
203641

QUALCOMM  
MDM6600  
ANVK794  
E1616007

6KN2

GOC 3 94V-0 1703



QUALCOMM  
MDM6600  
ANVK794  
E1616007

6KNZ

11494246

09



30 40 50 60 70 80 90 100 110 120 130

11494246



LEADTEK  
P15070002819  
Model LR9151  
FCC CE  
MADE IN JAPAN

CINTERION  
S30960-S2600-A300-1 Model: PX50  
Made in Germany H6  
IC: 7830A-PX58  
FCC ID: Q1PPXS8  
IMEI/MEID: 99000218 44B480 4  
ANATEL: 1561-11-5015  
CE 0682

6NX9

150R16  
B2

PAS 455-100  
203641

09-000010

11494246



epec | *build to print electronics*  
KAYO Rechargeable Li-ion Battery Pack  
KAL523450-2P 3.7V 2200mAh 8.14Wh  
CAUTION:  
May explode if disposed of in fire.  
Use specified charger only.  
Do not short circuit.  
STOP P/N:33006  
1/CP6/34/50-2  
Red wire:+Black wire:-



IEC62133

