



(2004)量认(国)字(H2402)号



No.L1659



## ShenZhen Electronic Product Quality Testing Center

### CONFORMANCE TEST REPORT FOR HUMAN EXPOSURE TO ELECTROMAGNETIC FIELDS

SAR05\_008

Wuhan NEC mobile communication Co.,Ltd.

PCS mobile station

Type Name: N5102

FCC ID: S5D-KMP6J1BM1

Hardware Version: P2

Software Version: R05.04.04

Date of Issue: 2005-7-29





## GENERAL SUMMARY

Product Name	PCS mobile station	Development Stage	MP
Standard(s)	<p><b>47CFR § 2.1093:</b> Radiofrequency Radiation Exposure Evaluation: Portable Devices <b>FCC OET Bulletin 65 (Edition 97-01), Supplement C (Edition 01-01):</b> Evaluating Compliance with FCC Guidelines for Human Exposure to Radiofrequency Electromagnetic Fields <b>ANSI C95.1-1999:</b> IEEE Standard for Safety Levels with Respect to Human Exposure to Radio Frequency Electromagnetic Fields, 3 kHz to 300 GHz. <b>IEEE 1528-2003:</b> Recommended Practice for Determining the Peak Spatial-Average Specific Absorption Rate (SAR) in the Human Body Due to Wireless Communications Devices: Experimental Techniques.</p>		
Conclusion	<p>Localized Specific Absorption Rate (SAR) of this portable wireless equipment has been measured in all cases requested by the relevant standards cited in Clause 5.2 of this test report. Maximum localized SAR is below exposure limits specified in the relevant standards cited in Clause 5.1 of this test report.</p> <p>General Judgment: <b>Pass</b></p> <p style="text-align: right;">Date of issue: July 29th, 2005</p>		
Comment	<p>TX Freq. Band: 1850.20 MHz —1909.80 MHz RX Freq. Band: 1930.20 MHz —1989.80 MHz Antenna Character : build inside The test result only responds to the measured sample.</p>		
<p>Tested by: <u>Li Jun Liang</u>, Date: <u>July 29th, 2005</u> Lijun Liang</p> <p>Checked by: <u>Smart Li</u>, Date: <u>July 29, 2005</u> Smart Li</p> <p>Approved by: <u>Keqin Wang</u>, Date: <u>July 29, 2005</u> Keqin Wang</p> 			

## Contents

### 1. GENERAL CONDITIONS

### 2. ADMINISTRATIVE DATA

- 2.1. Identification of the Responsible Testing Laboratory
- 2.2. Identification of the Responsible Testing Location(s)
- 2.3. Organization Item
- 2.4. Identification of Applicant
- 2.5. Identification of Manufacture

### 3. EQUIPMENT UNDER TEST (EUT)

- 3.1. Identification of the Equipment under Test
- 3.2. Identification of all used Test Sample of the Equipment under Test

### 4. OPERATIONAL CONDITIONS DURING TEST

- 4.1. Schematic Test Configuration
- 4.2. SAR Measurement System

### 5. CHARACTERISTICS OF THE TEST

- 5.1. Applicable Limit Regulations
- 5.2. Applicable Measurement Standards

### 6. LABORATORY ENVIRONMENT

### 7. TEST RESULTS

- 7.1. Dielectric Performance
- 7.2. Summary of Measurement Results
- 7.3. Conclusion

### 8. MEASUREMENT UNCERTAINTY

### 9. MAIN TEST INSTRUMENTS

**This Test Report consists of the following Annexes:**

**Annex A: Accreditation Certificate**

**Annex B: Test Layout**

**Annex C: Sample Photographs**

**Annex D: Graph Test Results**

---

## **1 . GENERAL CONDITIONS**

**1.1 This report only refers to the item that has undergone the test.**

**1.2 This report standalone dose not constitute or imply by its own an approval of the product by the certification Bodies or competent Authorities.**

**1.3 This document is only valid if complete; no partial reproduction can be made without written approval of Shenzhen Electronic Product Quality Testing Center.**

**1.4 This report cannot be used partially or in full for publicity and/or promotional purposes without previous written approval of Shenzhen Electronic Product Quality Testing Center and the Accreditation Bodies, if it applies.**

## 2. Administrative Date

### 2.1. Identification of the Responsible Testing Laboratory

**Company Name:** ShenZhen Electronic Product Quality Testing Center  
**Department:** Testing Department  
**Address:** Electronic Testing Building, ShaHe Road, NanShan District,  
ShenZhen, P. R. China  
**Telephone:** +86-0755-26628676  
**Fax:** +86-0755-26627238  
**Responsible Test Lab  
Managers:** Mr. Wang Keqin

### 2.2. Identification of the Responsible Testing Location(s)

**Company Name:** ShenZhen Electronic Product Quality Testing Center  
**Address:** Electronic Testing Building, ShaHe Road, NanShan District,  
ShenZhen, P. R. China

### 2.3. Organization Item

**S.E.T Report No.:** SAR05\_008  
**S.E.T Project Leader:** Mr. Li Sixiong  
**S.E.T Responsible for  
accreditation scope:** Mr. Wang Keqin  
**Start of Testing:** 2005-7-9  
**End of Testing:** 2005-7-14

### 2.4. Identification of Applicant

**Company Name:** Wuhan NEC mobile communication Co.,Ltd.  
**Address:** Building No.1, Industrial Area No.2, Guandong Science&Tech.  
Industry Park, Wuhan, Hubei 430074, China  
**Contact person:** Wang jinling  
**Telephone:** (+86)010-58229909  
**Fax:** (+86)010-58228899

### 2.5. Identification of Manufacture

**Company Name:** Wuhan NEC mobile communication Co.,Ltd.  
**Address:** Building No.1, Industrial Area No.2, Guandong Science&Tech.  
Industry Park, Wuhan, Hubei 430074, China  
**Contact person:** Wang jinling  
**Telephone:** (+86)010-58229909  
**Fax:** (+86)010-58228899

**Notes:** This data is based on the information by the applicant.



No. SAR05-008

### 3. Equipment Under Test (EUT)

#### 3.1. Identification of the Equipment under Test

<b>Brand Name:</b>	NEC	
<b>Type Name:</b>	N5102	
<b>Marking Name:</b>	N5102	
	Test frequency	PCS 1900MHz
	Battery type	MAW-BT0002; 720mAh; 3.7V
<b>General</b>	Antenna type	Build inside
<b>description:</b>	Operation mode	Call established
	Modulation mode	GSM/GPRS; NO BLUETOOTH
	Max. Power	EIRP 0.294w(24.69dBm)

#### 3.2. Identification of all used Test Sample of the Equipment under Test

EUT Code	Serial Number	Hardware Version	Software Version	IMEI
07400d01	N.A.	P2	R05.04.04	356579000000177

## 4 OPERATIONAL CONDITIONS DURING TEST

### 4.1 Schematic Test Configuration

During SAR test, EUT is in Traffic Mode (Channel Allocated) at Normal Voltage Condition. A communication link is set up with a System Simulator (SS) by air link, and a call is established.

The TCH is allocated to 512, 661 and 810 respectively in the case of 1900 MHz. The EUT is commanded to operate at maximum transmitting power.

The EUT shall use its internal transmitter. The antenna(s), battery and accessories shall be those specified by the manufacturer. The EUT battery must be fully charged and checked periodically during the test to ascertain uniform power output. If a wireless link is used, the antenna connected to the output of the base station simulator shall be placed at least 50 cm away from the handset.

The signal transmitted by the simulator to the antenna feeding point shall be lower than the output power level of the handset by at least 35 dB.

### 4.2 SAR Measurement System

The SAR measurement system being used is the IndexSAR SARA2 system, which consists of a

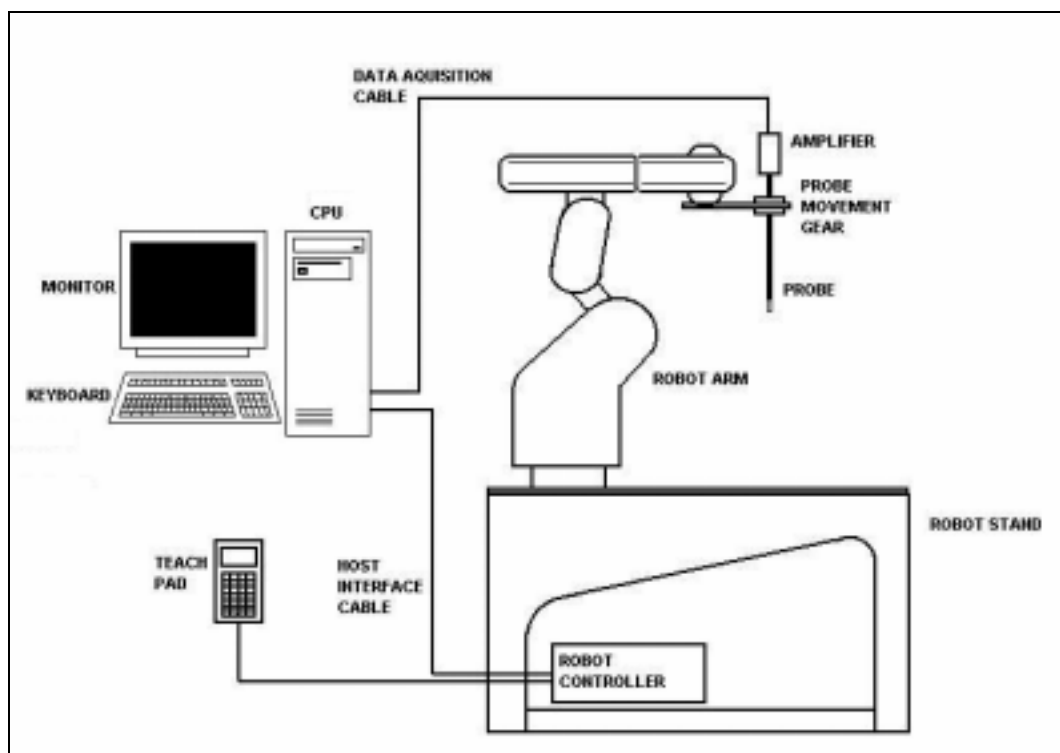


Figure1. SAR Lab Test Measurement Set-up

Mitsubishi RV-E2 6-axis robot arm and controller, IndexSAR probe and amplifier and SAM phantom

Head Shape. The system is controlled remotely from a PC, which contains the software to control the robot and data acquisition equipment. The software also displays the data obtained from test scans.

In operation, the system first does an area (2D) scan at a fixed depth within the liquid from the inside wall of the phantom. When the maximum SAR point has been found, the system will then carry out a 3D scan centred at that point to determine volume averaged SAR level.

### 4.2.1 Robot system specification

The robot is used to articulate the probe to programmed positions inside the phantom head to obtain the SAR readings from the DUT.



#### Robot and Stand

Type	Mitsubishi Movemaster RV-2A / 6 axis vertical articulated robot
Dimensions (robot)	Height: 790mm (in home position)
Dimensions (robot stand)	1010L x 450W x 820H mm
Weight	Approx. 36 kg
Position repeatability	+/- 0.04mm
Drive Method	AC servomotor
Expandability	Extra axis expansion capability for probe calibration applications E-Field probe



#### Robot Controller Unit

Type	CR1 - 571
Dimensions	212W x 290D x 151H mm
Weight	8 kg
Power source	single-phase 100 - 240 VAC

### 4.2.2 Probe and amplifier specification

#### IXP-050 Indexsar isotropic immersible SAR probe

The probes are constructed using three orthogonal dipole sensors arranged on an interlocking, triangular prism core. The probes have built-in shielding against static charges and are contained within a PEEK



cylindrical enclosure material at the tip (showed in figure 2). The system uses diode compression potential (DCP) to determine SAR values for different types of modulation. Crest factor is not used for determining SAR values. The DCP for different types of modulation is determined during the probe calibration procedure.

### E-filed Probe



#### Type

Three orthogonal dipole sensors arranged on triangular, interlocking substrates

**Overall length:** 350mm

**Tip length:** 10mm

**Body diameter:** 12mm

**Tip diameter:** 5mm

#### Dimensions

**Distance from probe tip to dipole centers:** 2.5mm

#### Interfacing

Lemo 6 pole latching connector for interfacing to high impedance amplifier

+/- 0.5dB in brain liquids (rotation about probe axis)

#### Isotropy

typically +/- 0.15dB

+/- 0.5dB in brain liquids (rotation normal to probe axis)

#### Calibration

Indexsar calibration in brain tissue simulating liquids at frequency of 900MHz, 1800MHz and 1900MHz

#### Dynamic Range

0.001W/kg to 100W/kg in liquid. Linearity +/- 0.2W/kg

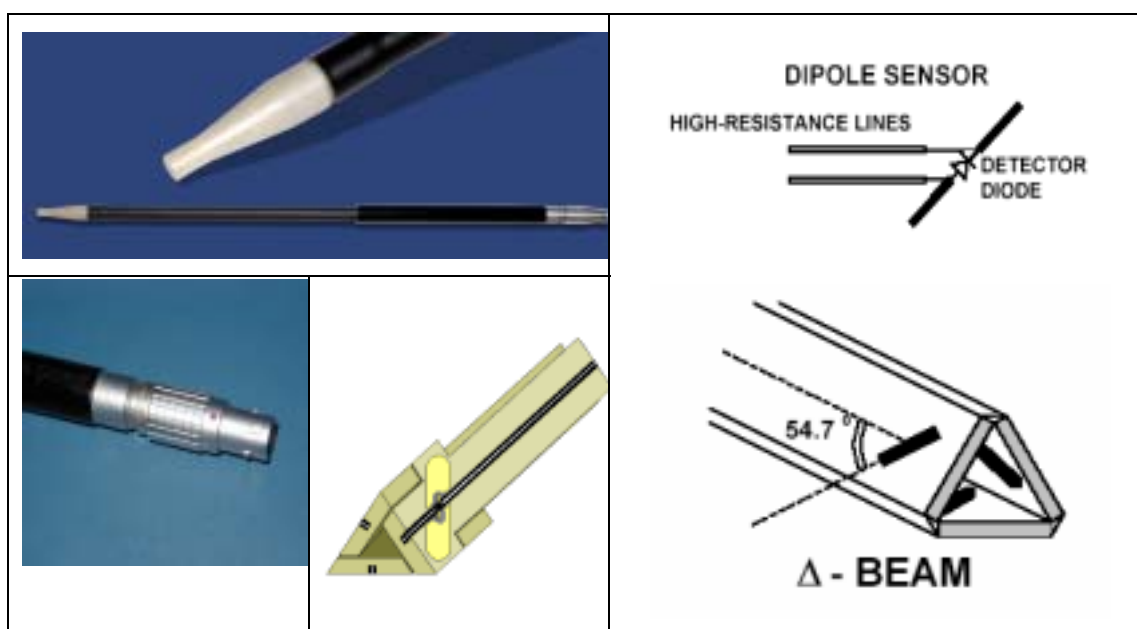
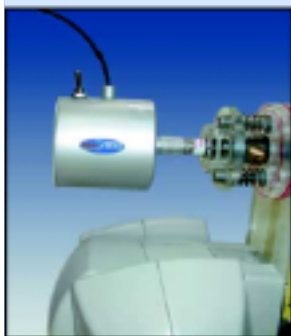


Figure2. Specification and characterisation parameters of indexsar probe

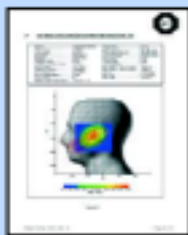
## IFA-010 Amplifier

The amplifier unit has a multi-pole connector to connect to the probe and a multiplexer selects between the 3-channel single-ended inputs. A 16-bit AtoD converter with programmable gain is used along with an on-board micro-controller with non-volatile firmware. Battery life is around 150 hours and data are transferred to the PC via 3m of duplex optical fibre and a self-powered RS232 to optical converter.



### Probe Amplifier and PC Interface

<b>Type</b>	High impedance inputs with 3 independent x,y,z sensor channels giving simultaneous measurement data every 2ms. Reads true average of modulated signals without the need for duty cycle corrections
<b>Ranges</b>	Software selectable of x1 to 63
<b>Cable</b>	Optical cable with self-powered 9 way RS232 converter. 3m cable length supplied as standard. Other lengths to order.
<b>Power Requirements</b>	2 x AAA batteries giving approximately 100 hours usage.



### **'Word' report format**

The results of each frequency scan are presented in a Microsoft 'Word' document with all the necessary measurement parameters automatically tabulated. Users can customise the layout and in some cases language changes are possible.

## 4.2.3 Phantoms

### 4.2.3.1 SAR head phantom (SAM)

The Indexsar SAM Upright Phantom is fabricated to the shape defined in these CAD files by Antennessa. It is mounted on the base table, which holds the robotic positioner. Both mechanical and laser-based registration systems are utilised to register the phantom position in relationship to the robot co-ordinate system. In the SARA2 implementation, the SAM phantom is mounted on a supporting table made of low dielectric loss material, which includes mounting brackets for DUT positioners, dipole holders and (optionally) a shelf for supporting larger devices like laptop computers.



### Head Phantom

<b>Type 2</b>	Upright SAM phantom
<b>Dimensions</b>	Height: 320mm Baseplate diameter: 275mm
<b>Weight</b>	empty: 1.2 kg filled: 7.2 kg
<b>Wall thickness</b>	2.0 mm $\pm$ 0.2
<b>Construction</b>	Low loss resin / Strengthened sagittal seam

#### 4.2.3.2 Box phantom

The box phantom used for body testing and for validation is manufactured from Perspex.

#### IXB – 070 Specification and characterisation parameters



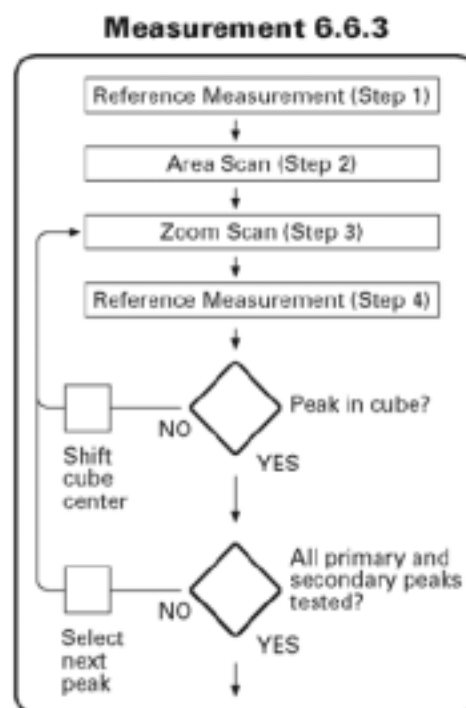
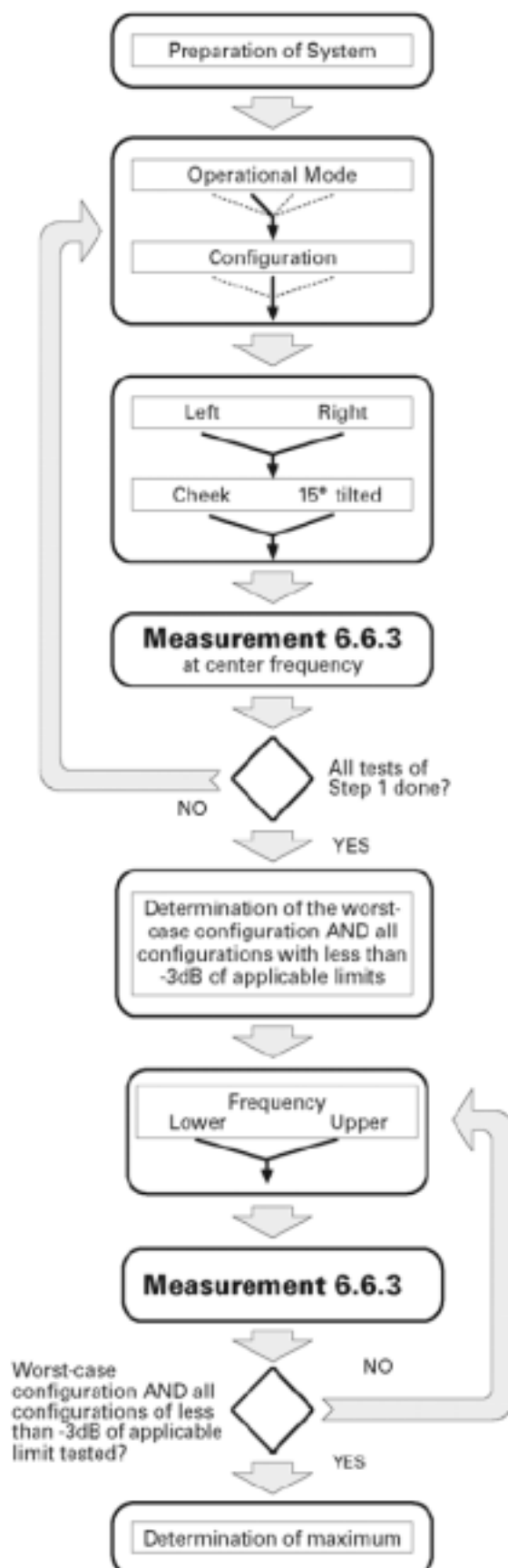
<b>Constructional details</b>	
<b>Internal dimensions:</b>	200mm x 200mm x 200mm
<b>Thickness of base:</b>	2mm $\pm$ 0.2mm
<b>Wall thickness:</b>	4mm
<b>Material:</b>	PMMA
<b>Frequency range</b>	900MHz – 6GHz
<b>Dielectric properties</b>	Relative permittivity 2.7 Loss tangent <0.02

**Tissue-simulant volume required for 150mm depth (6 litres)**

#### Liquid depth for 4 skin depths in different tissue-simulant liquids

Tissue-simulant liquid	Minimum liquid depth (mm)
900 MHz head liquid	150
900 MHz body liquid	160
1900 MHz head liquid	95
1900 MHz body liquid	100
2450 head liquid	75
2450 body liquid	75
5-6GHz liquids	25

## 4.2.4 SAR measurement procedure



Channel	Left				Right			
	Cheek		Tilt		Cheek		Tilt	
	Retracted	Extended	Retracted	Extended	Retracted	Extended	Retracted	Extended
<b>Mode 1:</b>								
<b>High</b>			S2(-1.4dB)	S2(-0.4dB)			S2(-2.2dB)	S2(-1.4dB)
<b>Middle</b>	S1(-4dB)	S1(-4dB)	S1(-1.5dB)	S1(-0.5dB)	S1(-5dB)	S1(-5dB)	S1(-2.5dB)	S1(-1.5dB)
<b>Low</b>			S2(-1.3dB)	S2(-0.7dB)			S2(-2.7dB)	S2(-0.6dB)
<b>Mode 2:</b>								
<b>High</b>			S2(-2.7dB)	S2(-1.1dB)				
<b>Middle</b>	S1(-5dB)	S1(-5dB)	S1(-2.5dB)	S1(-1dB)	S1(-6dB)	S1(-6dB)	S1(-5dB)	S1(-5dB)
<b>Low</b>			S2(-2.2dB)	S2(-0.8dB)				

After an area scan has been done at a fixed distance of 8mm from the surface of the phantom on the source side, a 3D scan is set up around the location of the maximum spot SAR. First, a point within the scan area is visited by the probe and a SAR reading taken at the start of testing. At the end of testing, the probe is returned to the same point and a second reading is taken. Comparison between these start and end readings enables the power drift during measurement to be assessed.

Above is the scanning procedure flow chart and table from the IEEE p1528 standard. This is the procedure for which all compliant testing should be carried out to ensure that all variations of the device position and transmission behaviour are tested.

#### 4.2.5 SARA2 Interpolation and Extrapolation schemes

SARA2 software contains support for both 2D cubic B-spline interpolation as well as 3D cubic B-spline interpolation. In addition, for extrapolation purposes, a general n-th order polynomial fitting routine is implemented following a singular value decomposition algorithm. A 4th order polynomial fit is used by default for data extrapolation, but a linear-logarithmic fitting function can be selected as an option. The polynomial fitting procedures have been tested by comparing the fitting coefficients generated by the SARA2 procedures with those obtained using the polynomial fit functions of Microsoft Excel when applied to the same test input data.

#### 4.2.6 Interpolation of 2D area scan

The 2D cubic B-spline interpolation is used after the initial area scan at fixed distance from the phantom

shell wall. The initial scan data are collected with approx. 10mm spatial resolution and spline interpolation is used to find the location of the local maximum to within a 1mm resolution for positioning the subsequent 3D scanning.

#### 4.2.7 Extrapolation of 3D scan

For the 3D scan, data are collected on a spatially regular 3D grid having (by default) 6.4 mm steps in the lateral dimensions and 3.5 mm steps in the depth direction (away from the source). SARA2 enables full control over the selection of alternative step sizes in all directions.

The digitised shape of the head is available to the SARA2 software, which decides which points in the 3D array are sufficiently well within the shell wall to be 'visited' by the SAR probe. After the data collection, the data are extrapolated in the depth direction to assign values to points in the 3D array closer to the shell wall. A notional extrapolation value is also assigned to the first point outside the shell wall so that subsequent interpolation schemes will be applicable right up to the shell wall boundary.

#### 4.2.8 Interpolation of 3D scan and volume averaging

The procedure used for defining the shape of the volumes used for SAR averaging in the SARA2 software follow the method of adapting the surface of the 'cube' to conform with the curved inner surface of the phantom. This is called, here, the conformal scheme.

For each row of data in the depth direction, the data are extrapolated and interpolated to less than 1mm spacing and average values are calculated from the phantom surface for the row of data over distances corresponding to the requisite depth for 10g and 1g cubes. This results in two 2D arrays of data, which are then cubic B-spline interpolated to sub mm lateral resolution. A search routine then moves an averaging square around through the 2D array and records the maximum value of the corresponding 1g and 10g volume averages. For the definition of the surface in this procedure, the digitized position of the head shell surface is used for measurement in head-shaped phantoms. For measurements in rectangular, box phantoms, the distance between the phantom wall and the closest set of gridded data points is entered into the software. For measurements in box-shaped phantoms, this distance is under the control of the user. The effective distance must be greater than 2.5mm as this is the tip-sensor distance and to avoid interface proximity effects, it should be at least 5mm. A value of 6 or 8mm is recommended. This distance is called **dbe**.

For automated measurements inside the head, the distance cannot be less than 2.5mm, which is the radius of the probe tip and to avoid interface proximity effects, a minimum clearance distance of x mm is

retained. The actual value of  $d_{be}$  will vary from point to point depending upon how the spatially regular 3D grid points fit within the shell. The greatest separation is when a grid point is just not visited due to the probe tip dimensions. In this case the distance could be as large as the step-size plus the minimum clearance distance (i.e with  $x=5$  and a step size of 3.5,  $d_{be}$  will be between 3.5 and 8.5mm).

The default step size ( $d_{step}$ ) used is 3.5mm, but this is under user-control. The compromise is with time of scan, so it is not practical to make it much smaller or scan times become long and power-drop influences become larger.

The robot positioning system specification for the repeatability of the positioning ( $d_{ss}$ ) is  $\pm 0.04$ mm.

The phantom shell is made by an industrial moulding process from the CAD files of the SAM shape, with both internal and external moulds. For the upright phantoms, the external shape is subsequently digitized on a Mitutoyo CMM machine (Euro an ultrasonic sensor indicate that the shell thickness ( $d_{ph}$ ) away from the ear is  $2.0 \pm 0.1$ mm. The ultrasonic measurements were calibrated using additional mechanical measurements on available cut surfaces of the phantom shells. See support document IXS-020x.

For the upright phantom, the alignment is based upon registration of the rotation axis of the phantom on its 253mm diameter baseplate bearing and the position of the probe axis when commanded to go to the axial position. A laser alignment tool is provided (procedure detailed elsewhere). This enables the registration of the phantom tip ( $d_{mis}$ ) to be assured to within approx. 0.2mm. This alignment is done with reference to the actual probe tip after installation and probe alignment. The rotational positioning of the phantom is variable – offering advantages for special studies, but locating pins ensure accurate repositioning at the principal positions (LH and RH ears).

#### **4.2.9 Probe anisotropy and boundary proximity influence correction software (Virtual Probe Miniaturization VPM software)**

Indexsar Report IXS0223 provides a background to the factors affecting measurements at high frequencies when using SAR probes of size 8 – 5mm tip diameter. Although the Indexsar probes are at the smaller end of this range, SAR probes are not isotropic in 5GHz phantom field gradients and additional precautions have to be taken in measurements. The following measures are recommended:

1) At  $>5$ GHz, the SAR field decays to  $1/e$  of its value within 3-4mm of the surface of a phantom with a source adjacent. So, measurements are significantly affected by small errors in the separation distances employed between the probe and the phantom surface. The distance between the probe tip and the

plane of the sensors should be allowed for using the same value as that declared in the probe calibration document. Distances between the probe tip and phantom surface should be measured accurately to 0.1mm. The best way to assure this is to use the robot to position the probe in light contact with the phantom wall and then to withdraw the probe by the selected amount under robot control.

2) The preferred test geometry at 5GHz is for testing at the bottom of an open phantom. If tests at the side of a phantom are performed, it will be necessary to apply VPM corrections as described below. In either case, careful monitoring of probe spacing from the phantom is required. Probe isotropy is improved for measuring fields polarized either normal to or parallel to the probe axis. If the source polarization is known, this arrangement should be established, if possible.

3) The probe calibration factors including boundary correction terms should be carefully entered from the calibration document. The probe calibration factors require that the probe be oriented in a known rotational position. The red spot on the Indextsar probe should be aligned facing away from the robot arm.

4) The latest SARA2 software (VPM editions) contain support for correcting for probe anisotropy in strong field gradients and include a procedure for correcting for boundary proximity influences. As noted above, the probe has to be oriented in a given rotational position and some familiarity with the new measurement procedures is necessary. The calculations can be performed either with or without the extended correction schemes applied.

5) If boundary corrections are used, it may be preferable to go rather closer to the phantom surface than is usually recommended and to perform scans using small steps between the measurement planes so that good data on the SAR profiles are collected within the first 10mm of the phantom depth.



## 5 CHARACTERISTICS OF THE TEST

### 5.1 Applicable Limit Regulations

**47CFR § 2.1093:** Radiofrequency Radiation Exposure Evaluation: Portable Devices

**FCC OET Bulletin 65(Edition 97-01), Supplement C(Edition 01-01):** Evaluating Compliance with FCC Guidelines for Human Exposure to Radiofrequency Electromagnetic Fields

**ANSI C95.1–1999:** IEEE Standard for Safety Levels with Respect to Human Exposure to Radio Frequency Electromagnetic Fields, 3 kHz to 300 GHz.

It specifies the maximum exposure limit of **1.6 W/kg** as averaged over any 1 gram of tissue for portable devices being used within 20 cm of the user in the uncontrolled environment.

### 5.2 Applicable Measurement Standards

**IEEE 1528–2003:** Recommended Practice for Determining the Peak Spatial-Average Specific Absorption Rate (SAR) in the Human Body Due to Wireless Communications Devices: Experimental Techniques.

They specify the measurement method for demonstration of compliance with the SAR limits for such equipments.

## 6 LABORATORY ENVIRONMENT

**Table: The Ambient Conditions during SAR Test**

Temperature	Min. = 15 ° C, Max. = 30 ° C
Relative humidity	Min. = 30%, Max. = 70%
Ground system resistance	< 0.5
Ambient noise is checked and found very low and in compliance with requirement of standards. Reflection of surrounding objects is minimized and in compliance with requirement of standards.	

## 7 TEST RESULTS

### 7.1 Dielectric Performance

The measured 1-gram averaged SAR values of the device against the head and the body are provided in Tables 1 and 2 respectively. The humidity and ambient temperature of test facility were 41% ~52% and 23.5°C ~24.1 °C respectively. The SAM head phantom ( SN 0380 SH ) was full of the head tissue simulating liquid. The depth of the body tissue simulating liquid was 15.1cm. The distance between the back of the device and the bottom of the flat phantom is 1.54cm. A base station simulator was used to control the device during the SAR measurement. The phone was supplied with full-charged battery for each measurement.

For head measurement, the device was tested at the lowest, middle and highest frequencies in the transmit band.

**Table 1: Dielectric Performance of Head Tissue Simulating Liquid**

Measurement is made at temperature 23.3 °C and relative humidity 46%.			
/	Frequency	Permittivity	Conductivity (S/m)
<b>Target value</b>	1900 MHZ	40.0	1.40
<b>Validation value</b> ( July 9 )	1900 MHZ	41.21	1.364
<b>Validation value</b> ( July 11 )	1900 MHZ	41.21	1.364

For body-worn measurements, the device was tested against flat phantom representing the user body. Under measurement phone was put on in the belt holder.

**Table 2: Dielectric Performance of Body Tissue Simulating Liquid**

Measurement is made at temperature 23.3 °C and relative humidity 45%.			
/	Frequency	Permittivity	Conductivity (S/m)
<b>Target value</b>	1900 MHz	53.3	1.52
<b>Validation value</b>	1900 MHz	53.68	1.498

**Note: the validation value of head tissue is finished respectively on July 9, 2005 and July 11, 2005.**

**the validation value of body tissue is finished on July 14, 2005.**

## 7.2 Summary of Measurement Results (GSM 1900 MHz Band)

Table 3: SAR Values (GSM 1900 MHz Band), Measured against the head.

Temperature: 23.5 °C ~24.1 °C, humidity: 41% ~52%.	
Limit of SAR (W/kg)	1 g Average
	1.6
Test Case	Measurement Result (W/kg)
	1 g Average
Left head, Touch cheek, Top frequency	0.035
Left head, Touch cheek, Mid frequency	0.052
Left head, Touch cheek, Bottom frequency	0.065
Left head, Tilt 15 Degree, Top frequency	0.017
Left head, Tilt 15 Degree, Mid frequency	0.019
Left head, Tilt 15 Degree, Bottom frequency	0.024
Right head, Touch cheek, Top frequency	0.031
Right head, Touch cheek, Mid frequency	0.037
Right head, Touch cheek, Bottom frequency	0.050
Right head, Tilt 15 Degree, Top frequency	0.015
Right head, Tilt 15 Degree, Mid frequency	0.020
Right head, Tilt 15 Degree, Bottom frequency	0.022

Table 4: SAR Values (GSM 1900 MHz Band), Measured against the body

Temperature: 23.5 °C ~24.1 °C, humidity: 41% ~52%.	
Limit of SAR (W/kg)	1 g Average
	1.6
Test Case	Measurement Result (W/kg)
	1 g Average
Side , Top frequency	0.157
Side, Mid frequency	0.188
Side, Bottom frequency	0.218

## 7.3 Conclusion

Localized Specific Absorption Rate (SAR) of this portable wireless device has been measured in all cases requested by the relevant standards cited in Clause 5.2 of this report. Maximum localized SAR is **below** exposure limits specified in the relevant standards cited in Clause 5.1 of this test report.

## 8 Measurement Uncertainty

No	Uncertainty Component	Type	Uncertainty Value (%)	Probability Distribution	k	$c_i$	Standard Uncertainty (%) $u_i(\%)$	Degree of freedom $V_{eff}$ or $\nu_i$
<b>Measurement System</b>								
1	- Probe Calibration	B	3.6	N	1	1	3.60	$\infty$
2	- Axial isotropy	B	4.23	R	$\sqrt{3}$	$\sqrt{1-cp}$	0.00	$\infty$
3	- Hemispherical Isotropy	B	10.7	R	$\sqrt{3}$	$\sqrt{cp}$	6.18	$\infty$
4	- Boundary Effect	B	1.7	R	$\sqrt{3}$	1	0.98	$\infty$
5	- Linearity	B	2.98	R	$\sqrt{3}$	1	1.69	$\infty$
6	- System Detection Limits	B	0.00	R	$\sqrt{3}$	1	0.00	$\infty$
7	- Readout Electronics	B	0.00	N	1	1	0.00	$\infty$
8	- Response Time	B	0.00	R	$\sqrt{3}$	1	0.00	$\infty$
9	- Integration Time	B	0.00	R	$\sqrt{3}$	1	0.00	$\infty$
10	- RF Ambient Conditions	B	0.00	R	$\sqrt{3}$	1	0.00	$\infty$
11	- Probe Position Mechanical tolerance	B	1.14	R	$\sqrt{3}$	1	0.33	$\infty$
12	- Probe Position with respect to Phantom Shell	B	2.86	R	$\sqrt{3}$	1	0.83	$\infty$
13	- Extrapolation, Interpolation and Integration Algorithms for Max. SAR evaluation	B	3.6	R	$\sqrt{3}$	1	2.08	$\infty$
<b>Uncertainties of the DUT</b>								
14	- Position of the DUT	A	0.00	N	1	1	0.00	0
15	- Holder of the DUT	A	0.00	N	1	1	0.00	0
16	- Output Power Variation – SAR drift measurement	B	5.0	R	$\sqrt{3}$	1	2.89	$\infty$

<b>Phantom and Tissue Parameters</b>								
17	- Phantom Uncertainty(shape and thickness tolerances)	B	1.43	R	$\sqrt{3}$	1	0.83	$\infty$
18	- Liquid Conductivity Target –tolerance	B	5.0	R	$\sqrt{3}$	0.7	2.02	$\infty$
19	- Liquid Conductivity – measurement Uncertainty)	B	2.0	R	$\sqrt{3}$	0.7	0.81	$\infty$
20	- Liquid Permittivity Target tolerance	B	5.0	R	$\sqrt{3}$	0.6	1.73	$\infty$
21	- Liquid Permittivity – measurement uncertainty	B	1.0	R	$\sqrt{3}$	0.6	0.35	$\infty$
<b>Combined Standard Uncertainty</b>				RSS			±8.95%	
<b>Expanded uncertainty</b> (Confidence interval of 95 %)				K= 2.003935			±17.9%	

## 9 MAIN TEST INSTRUMENTS

No.	EQUIPMENT	TYPE	Due Date
1	E-Field SAR Probe	IXP-050 (SN 0177)	2006-03-23
2	Six-axis AC Servo industrial robot	RV-2A (SN AN406018)	2006-03-23
3	Mobile Phone Tester	4405 (SN 0811211)	2006-03-23
4	System Validation Dipole 1900MHZ	IXD-080 (SN 0112)	2006-03-23
5	Probe Amplifier and PC Interface	IFA-010 (SN 0027)	2006-03-23
6	SAM Head Phantom	SN 0380 SH	2006-03-23
7	Box Phantom	IXB-070	2006-03-23



**ANNEX A**  
**of**  
**ShenZhen Electronic Product Quality Testing Center**  
  
**CONFORMANCE TEST REPORT FOR**  
**HUMAN EXPOSURE TO ELECTROMAGNETIC FIELDS**

**SAR05\_008**

**Wuhan NEC mobile communication Co.,Ltd.**

**PCS mobile station**

**Accreditation Certificate**

**This Annex consists of 2 pages**  
**Date of Report: 2005-7-29**





**ACCREDITATION CERTIFICATE  
OF CHINA NATIONAL ACCREDITATION BOARD  
FOR LABORATORIES  
(No.L1659 )**

This is to certify that

**Shenzhen Electronic Product Quality Testing Center**  
Electronic Testing Building, Shahe Road, Xili, Nanshan District,  
Shenzhen, Guangdong, China

has been assessed and proved to be in compliance with CNAL/AC01:  
*2003 Accreditation Criteria for Testing and Calibration Laboratories*  
(identical to ISO/IEC17025: 1999 *General Requirements for the*  
*Competence of Testing and Calibration Laboratories*).

Accreditation scope of the laboratory is listed in the attachment.

Date of Issue: 2004.10.09

Date of Expiry: 2009.10.08



**Wei Hao**

Secretary General of CNAL



**ANNEX B**  
**of**  
**ShenZhen Electronic Product Quality Testing Center**  
  
**CONFORMANCE TEST REPORT FOR**  
**HUMAN EXPOSURE TO ELECTROMAGNETIC FIELDS**

SAR05\_008

**Wuhan NEC mobile communication Co.,Ltd.**

**PCS mobile station**

**Type Name: N5102**

**Hardware Version : P2**

**Software Version : R05.04.04**

**TEST LAYOUT**

**This Annex consists of 5 pages**

**Date of Report: 2005-7-29**







**Fig.1 SARA2 System Test Layout**



**Fig.2 SARA2 System Test Layout**



**Fig.3 EUT Left Head Touch Cheek Position**



**Fig.4 EUT Left Head Tilt15 Position**



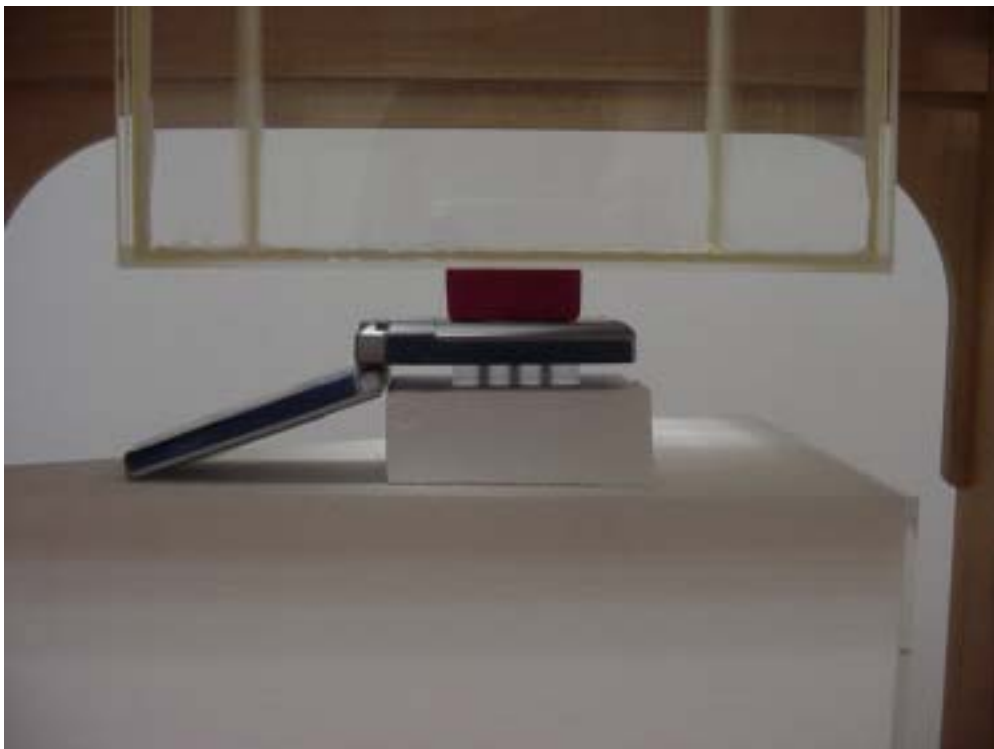
**Fig.5 EUT Right Head Touch Cheek Position**



**Fig.6 EUT Right Head Tilt15 Position**



**Fig.7 spacer 1.54cm**



**Fig.8 Side Position**



**ANNEX C**  
**of**  
**ShenZhen Electronic Product Quality Testing Center**

**CONFORMANCE TEST REPORT FOR**  
**HUMAN EXPOSURE TO ELECTROMAGNETIC FIELDS**

**SAR05\_008**

**Wuhan NEC mobile communication Co.,Ltd.**

**PCS mobile station**

**Type Name: N5102**

**Hardware Version : P2**

**Software Version : R05.04.04**

**Sample Photographs**

**This Annex consists of 3 pages**

**Date of Report: 2005-7-29**





No. SAR05-008

# 1. Photograph of the Equipment under Test

## 1.1. Appearance



No. SAR05-008

1.2 Inside





**ANNEX D**

**of**

**ShenZhen Electronic Product Quality Testing Center**

**CONFORMANCE TEST REPORT FOR**

**HUMAN EXPOSURE TO ELECTROMAGNETIC FIELDS**

**SAR05\_008**

**Wuhan NEC mobile communication Co.,Ltd.**

**PCS mobile station**

**Type Name: N5102**

**Hardware Version : P2**

**Software Version : R05.04.04**

**Graph Test Results**

**This Annex consists of 16 pages**

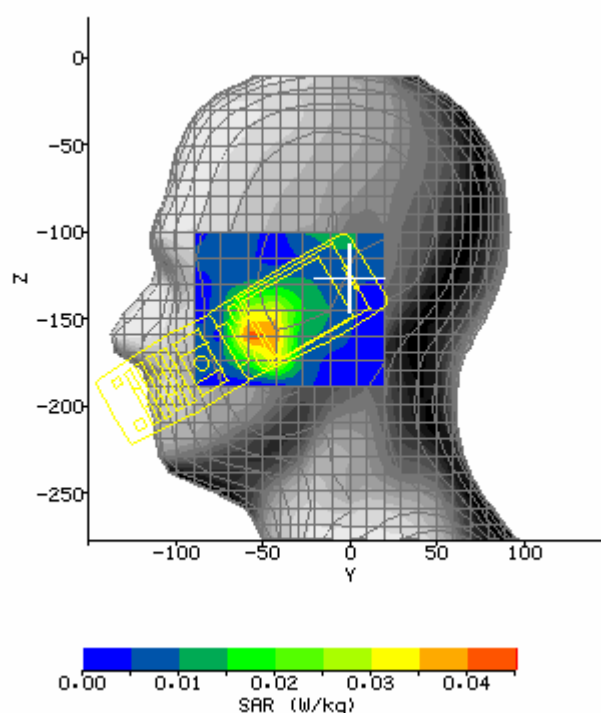
**Date of Report : 2005-7-29**





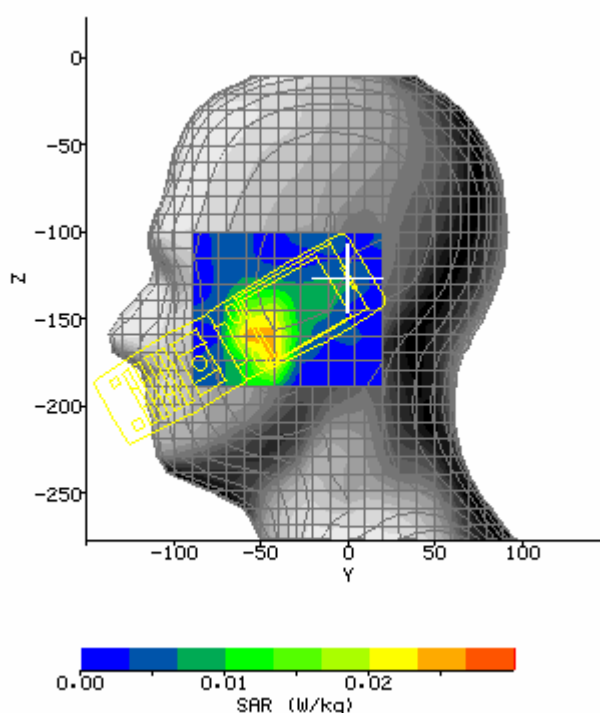
# SAR Test GSM 1900 LH\_TouchCheek (Bottom Channel)

System / software:	SARA2 / 2.33 VPM	Input Power Drift:	
Date / Time:	2005-7-9 15:42:31	DUT Battery Model/No:	
Filename:	NEC_N5102_1900LH_TouchCheek_B.txt	Probe Serial Number:	0177
Ambient Temperature:	23.9°C	Liquid Simulant:	Head tissue
Device Under Test:	NEC	Relative Permittivity:	41.21
Relative Humidity:	52%	Conductivity:	1.364
Phantom S/No:	Head_380SH.csv	Liquid Temperature:	23.3°C
Phantom Rotation:	0°	Max SAR Y-axis Location:	-49.14 mm
DUT Position:	1900LH_TouchCheek_B	Max SAR Z-axis Location:	-158.50 mm
Antenna Configuration:	build inside	Max E Field:	7.78 V/m
Test Frequency:	1900MHz	SAR 1g:	0.065 W/kg
Air Factors:	417 / 368 / 414	SAR 10g:	0.039 W/kg
Conversion Factors:	.326 / .326 / .326	SAR Start:	0.036 W/kg
Type of Modulation:	GMSK	SAR End:	0.036 W/kg
Modn. Duty Cycle:	GSM:8; GPRS:4	SAR Drift during Scan:	0.01 dB
Diode Compression Factors (V*200):	20 / 20 / 20	Probe battery last changed:	20/05/05
Input Power Level:	Level0(30dBm)	Extrapolation:	poly4



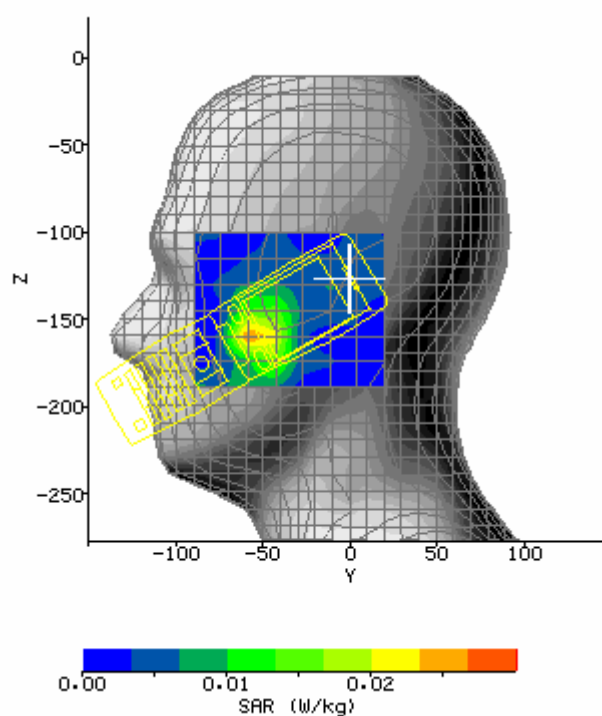
# SAR Test GSM 1900 LH\_TouchCheek (Middle Channel)

System / software:	SARA2 / 2.33 VPM	Input Power Drift:	
Date / Time:	2005-7-9 15:58:36	DUT Battery Model/No:	
Filename:	NEC_N5102_1900LH_TouchCheek_M.txt	Probe Serial Number:	0177
Ambient Temperature:	23.8°C	Liquid Simulant:	Head tissue
Device Under Test:	NEC	Relative Permittivity:	41.21
Relative Humidity:	51%	Conductivity:	1.364
Phantom S/No:	Head_380SH.csv	Liquid Temperature:	23.3°C
Phantom Rotation:	0°	Max SAR Y-axis Location:	-49.14 mm
DUT Position:	1900LH_TouchCheek_M	Max SAR Z-axis Location:	-158.50 mm
Antenna Configuration:	build inside	Max E Field:	6.99 V/m
Test Frequency:	1900MHz	SAR 1g:	0.052 W/kg
Air Factors:	417 / 368 / 414	SAR 10g:	0.030 W/kg
Conversion Factors:	.326 / .326 / .326	SAR Start:	0.023 W/kg
Type of Modulation:	GMSK	SAR End:	0.024 W/kg
Modn. Duty Cycle:	GSM:8; GPRS:4	SAR Drift during Scan:	0.02 dB
Diode Compression Factors (V*200):	20 / 20 / 20	Probe battery last changed:	20/05/05
Input Power Level:	Level0(30dBm)	Extrapolation:	poly4



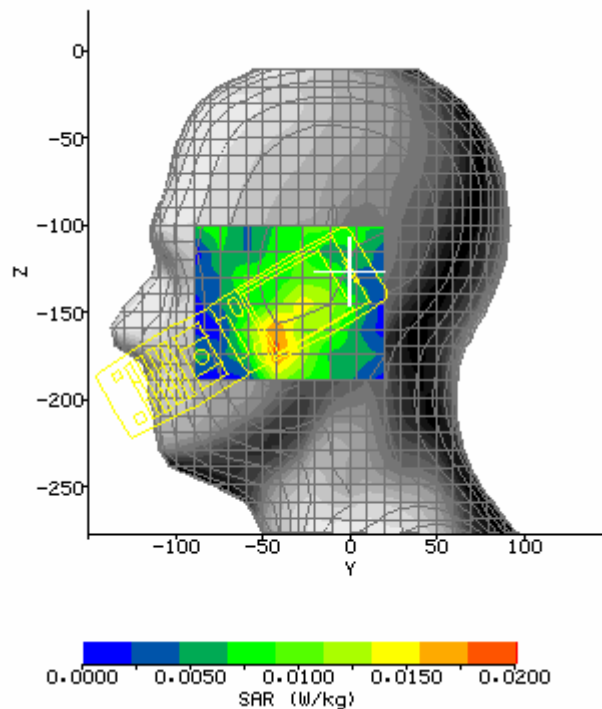
### SAR Test GSM 1900 LH\_TouchCheek (Top Channel)

System / software:	SARA2 / 2.33 VPM	Input Power Drift:	
Date / Time:	2005-7-9 16:12:20	DUT Battery Model/No:	
Filename:	NEC_N5102_1900LH_TouchCheek_T.txt	Probe Serial Number:	0177
Ambient Temperature:	23.9°C	Liquid Simulant:	Head tissue
Device Under Test:	NEC	Relative Permittivity:	41.21
Relative Humidity:	51%	Conductivity:	1.364
Phantom S/No:	Head_380SH.csv	Liquid Temperature:	23.3°C
Phantom Rotation:	0°	Max SAR Y-axis Location:	-52.29 mm
DUT Position:	1900LH_TouchCheek_T	Max SAR Z-axis Location:	-158.50 mm
Antenna Configuration:	build inside	Max E Field:	5.59 V/m
Test Frequency:	1900MHz	SAR 1g:	0.035 W/kg
Air Factors:	417 / 368 / 414	SAR 10g:	0.022 W/kg
Conversion Factors:	.326 / .326 / .326	SAR Start:	0.019 W/kg
Type of Modulation:	GMSK	SAR End:	0.018 W/kg
Modn. Duty Cycle:	GSM:8; GPRS:4	SAR Drift during Scan:	-0.15 dB
Diode Compression Factors (V*200):	20 / 20 / 20	Probe battery last changed:	20/05/05
Input Power Level:	Level0(30dBm)	Extrapolation:	poly4



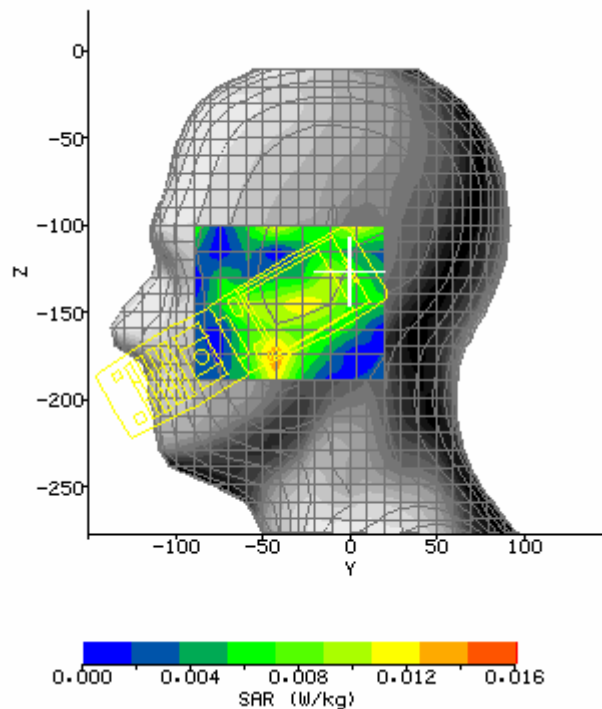
### SAR Test GSM 1900 LH\_Tilt15 (Bottom Channel)

System / software:	SARA2 / 2.33 VPM	Input Power Drift:	
Date / Time:	2005-7-11 14:36:13	DUT Battery Model/No:	
Filename:	NEC_N5102_1900LH_Tilt15_B.txt	Probe Serial Number:	0177
Ambient Temperature:	23.9°C	Liquid Simulant:	Head tissue
Device Under Test:	NEC	Relative Permittivity:	41.21
Relative Humidity:	45%	Conductivity:	1.364
Phantom S/No:	Head_380SH.csv	Liquid Temperature:	23.3°C
Phantom Rotation:	0°	Max SAR Y-axis Location:	-41.29 mm
DUT Position:	1900LH_Tilt15_B	Max SAR Z-axis Location:	-167.50 mm
Antenna Configuration:	build inside	Max E Field:	4.41 V/m
Test Frequency:	1900MHz	SAR 1g:	0.024 W/kg
Air Factors:	417 / 368 / 414	SAR 10g:	0.016 W/kg
Conversion Factors:	.326 / .326 / .326	SAR Start:	0.014 W/kg
Type of Modulation:	GMSK	SAR End:	0.013 W/kg
Modn. Duty Cycle:	GSM:8; GPRS:4	SAR Drift during Scan:	-0.20 dB
Diode Compression Factors (V*200):	20 / 20 / 20	Probe battery last changed:	20/05/05
Input Power Level:	Level0(30dBm)	Extrapolation:	poly4



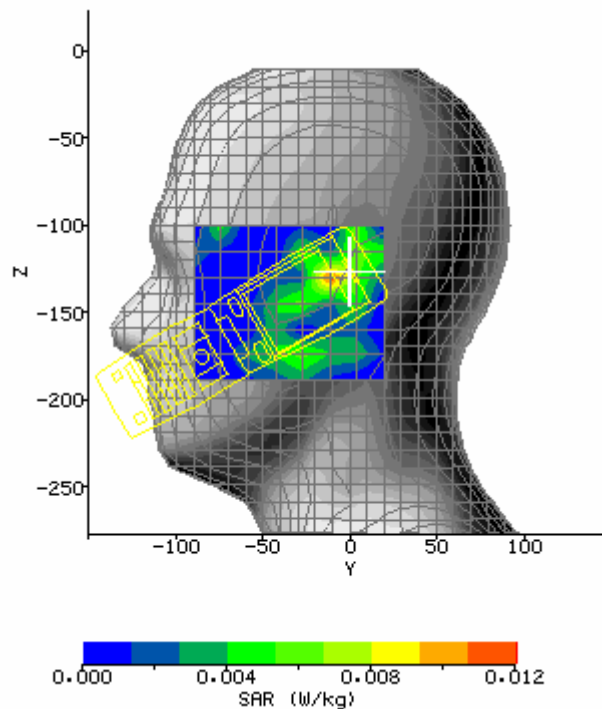
### SAR Test GSM 1900 LH\_Tilt15 (Middle Channel)

System / software:	SARA2 / 2.33 VPM	Input Power Drift:	
Date / Time:	2005-7-11 14:12:17	DUT Battery Model/No:	
Filename:	NEC_N5102_1900LH_Tilt15_M.txt	Probe Serial Number:	0177
Ambient Temperature:	23.9°C	Liquid Simulant:	Head tissue
Device Under Test:	NEC	Relative Permittivity:	41.21
Relative Humidity:	46%	Conductivity:	1.364
Phantom S/No:	Head_380SH.csv	Liquid Temperature:	23.3°C
Phantom Rotation:	0°	Max SAR Y-axis Location:	-42.86 mm
DUT Position:	1900LH_Tilt15_M	Max SAR Z-axis Location:	-175.00 mm
Antenna Configuration:	build inside	Max E Field:	3.99 V/m
Test Frequency:	1900MHz	SAR 1g:	0.019 W/kg
Air Factors:	417 / 368 / 414	SAR 10g:	0.014 W/kg
Conversion Factors:	.326 / .326 / .326	SAR Start:	0.007 W/kg
Type of Modulation:	GMSK	SAR End:	0.008 W/kg
Modn. Duty Cycle:	GSM:8; GPRS:4	SAR Drift during Scan:	0.13 dB
Diode Compression Factors (V*200):	20 / 20 / 20	Probe battery last changed:	20/05/05
Input Power Level:	Level0(30dBm)	Extrapolation:	poly4



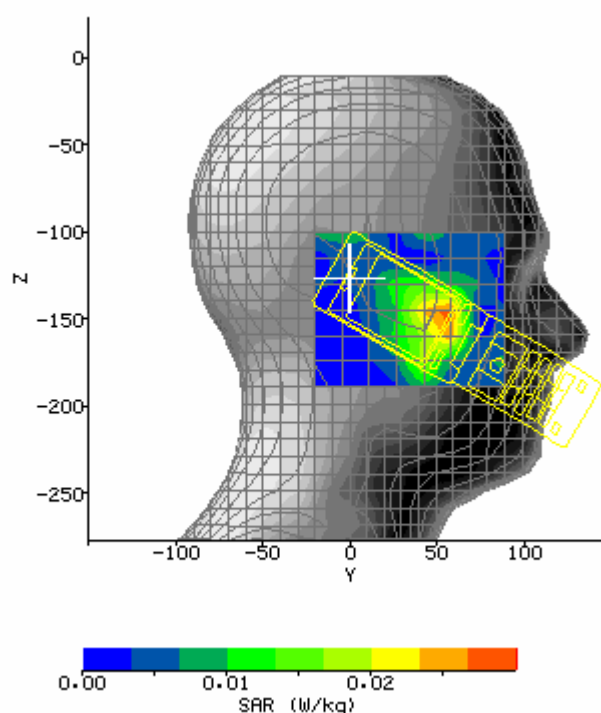
### SAR Test GSM 1900 LH\_Tilt15 (Top Channel)

System / software:	SARA2 / 2.33 VPM	Input Power Drift:	
Date / Time:	2005-7-11 10:59:32	DUT Battery Model/No:	
Filename:	NEC-N5102_1900LH_Tilt15_T.txt	Probe Serial Number:	0177
Ambient Temperature:	24.1°C	Liquid Simulant:	Head tissue
Device Under Test:	NEC	Relative Permittivity:	41.21
Relative Humidity:	41%	Conductivity:	1.364
Phantom S/No:	Head_380SH.csv	Liquid Temperature:	23.4°C
Phantom Rotation:	0°	Max SAR Y-axis Location:	-8.29 mm
DUT Position:	1900LH_Tilt15_T	Max SAR Z-axis Location:	-130.00 mm
Antenna Configuration:	build inside	Max E Field:	4.21 V/m
Test Frequency:	1900MHz	SAR 1g:	0.017 W/kg
Air Factors:	417 / 368 / 414	SAR 10g:	0.013 W/kg
Conversion Factors:	.326 / .326 / .326	SAR Start:	0.009 W/kg
Type of Modulation:	GMSK	SAR End:	0.010 W/kg
Modn. Duty Cycle:	GSM:8; GPRS:4	SAR Drift during Scan:	0.21 dB
Diode Compression Factors (V*200):	20 / 20 / 20	Probe battery last changed:	20/05/05
Input Power Level:	Level0(30dBm)	Extrapolation:	poly4



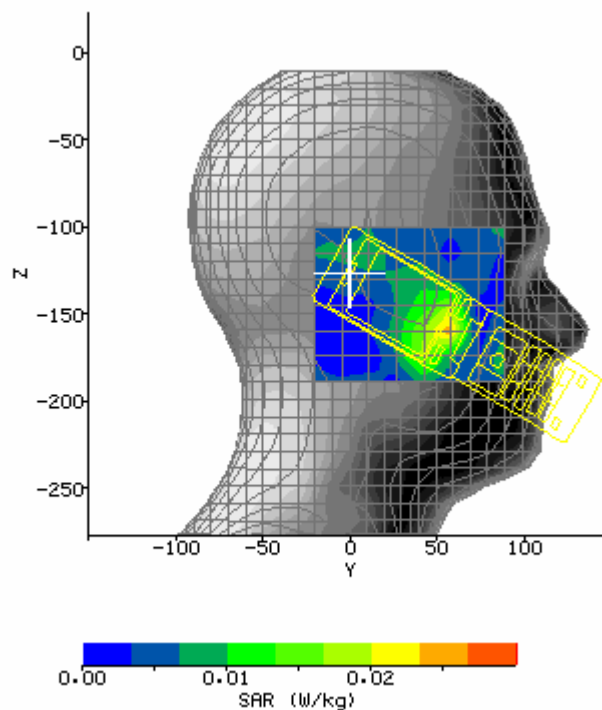
# SAR Test GSM 1900 RH\_TouchCheek (Bottom Channel)

System / software:	SARA2 / 2.33 VPM	Input Power Drift:	
Date / Time:	2005-7-11 15:10:30	DUT Battery Model/No:	
Filename:	NEC_N5102_1900RH_TouchCheek_B.txt	Probe Serial Number:	0177
Ambient Temperature:	24.1°C	Liquid Simulant:	Head tissue
Device Under Test:	NEC	Relative Permittivity:	41.21
Relative Humidity:	44%	Conductivity:	1.364
Phantom S/No:	Head_380SH.csv	Liquid Temperature:	23.3°C
Phantom Rotation:	180°	Max SAR Y-axis Location:	52.29 mm
DUT Position:	1900RH_TouchCheek_B	Max SAR Z-axis Location:	-149.50 mm
Antenna Configuration:	build inside	Max E Field:	6.77 V/m
Test Frequency:	1900MHz	SAR 1g:	0.050 W/kg
Air Factors:	417 / 368 / 414	SAR 10g:	0.030 W/kg
Conversion Factors:	.326 / .326 / .326	SAR Start:	0.028 W/kg
Type of Modulation:	GMSK	SAR End:	0.029 W/kg
Modn. Duty Cycle:	GSM:8; GPRS:4	SAR Drift during Scan:	0.15 dB
Diode Compression Factors (V*200):	20 / 20 / 20	Probe battery last changed:	20/05/05
Input Power Level:	Level0(30dBm)	Extrapolation:	poly4



### SAR Test GSM 1900 RH\_TouchCheek (Middle Channel)

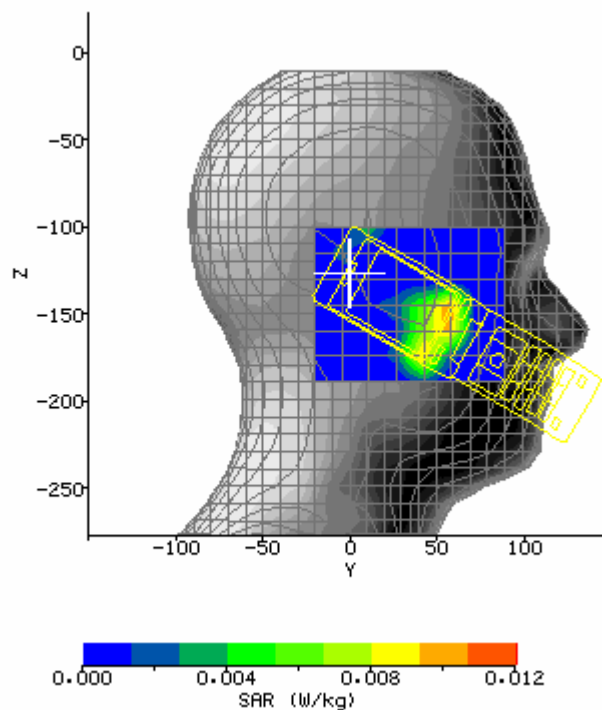
System / software:	SARA2 / 2.33 VPM	Input Power Drift:	
Date / Time:	2005-7-11 15:23:42	DUT Battery Model/No:	
Filename:	NEC_N5102_1900RH_TouchCheek_M.txt	Probe Serial Number:	0177
Ambient Temperature:	24.1°C	Liquid Simulant:	Head tissue
Device Under Test:	NEC	Relative Permittivity:	41.21
Relative Humidity:	44%	Conductivity:	1.364
Phantom S/No:	Head_380SH.csv	Liquid Temperature:	23.3°C
Phantom Rotation:	180°	Max SAR Y-axis Location:	52.29 mm
DUT Position:	1900RH_TouchCheek_M	Max SAR Z-axis Location:	-158.50 mm
Antenna Configuration:	build inside	Max E Field:	5.74 V/m
Test Frequency:	1900MHz	SAR 1g:	0.037 W/kg
Air Factors:	417 / 368 / 414	SAR 10g:	0.022 W/kg
Conversion Factors:	.326 / .326 / .326	SAR Start:	0.017 W/kg
Type of Modulation:	GMSK	SAR End:	0.018 W/kg
Modn. Duty Cycle:	GSM:8; GPRS:4	SAR Drift during Scan:	0.10 dB
Diode Compression Factors (V*200):	20 / 20 / 20	Probe battery last changed:	20/05/05
Input Power Level:	Level0(30dBm)	Extrapolation:	poly4





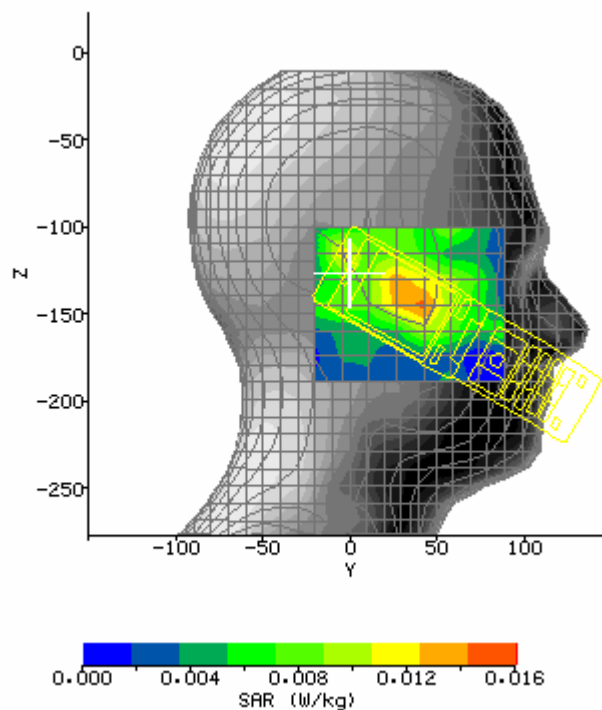
### SAR Test GSM 1900 RH\_TouchCheek (Top Channel)

System / software:	SARA2 / 2.33 VPM	Input Power Drift:	
Date / Time:	2005-7-11 15:54:33	DUT Battery Model/No:	
Filename:	NEC_N5102_1900RH_TouchCheek_T.txt	Probe Serial Number:	0177
Ambient Temperature:	23.9°C	Liquid Simulant:	Head tissue
Device Under Test:	NEC	Relative Permittivity:	41.21
Relative Humidity:	44%	Conductivity:	1.364
Phantom S/No:	Head_380SH.csv	Liquid Temperature:	23.3°C
Phantom Rotation:	180°	Max SAR Y-axis Location:	52.29 mm
DUT Position:	1900RH_TouchCheek_T	Max SAR Z-axis Location:	-155.50 mm
Antenna Configuration:	build inside	Max E Field:	5.57 V/m
Test Frequency:	1900MHz	SAR 1g:	0.031 W/kg
Air Factors:	417 / 368 / 414	SAR 10g:	0.020 W/kg
Conversion Factors:	.326 / .326 / .326	SAR Start:	0.010 W/kg
Type of Modulation:	GMSK	SAR End:	0.010 W/kg
Modn. Duty Cycle:	GSM:8; GPRS:4	SAR Drift during Scan:	-0.10 dB
Diode Compression Factors (V*200):	20 / 20 / 20	Probe battery last changed:	20/05/05
Input Power Level:	Level0(30dBm)	Extrapolation:	poly4



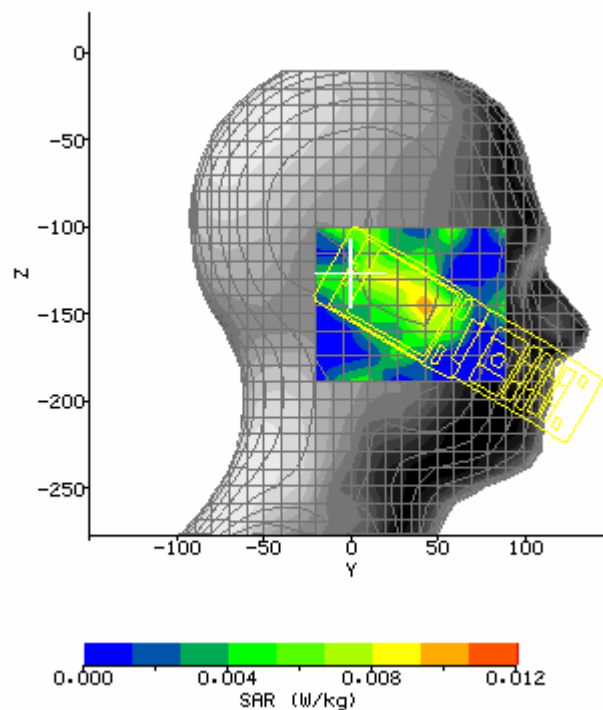
### SAR Test GSM 1900 RH\_Tilt15 (Bottom Channel)

System / software:	SARA2 / 2.33 VPM	Input Power Drift:	
Date / Time:	2005-7-11 17:27:08	DUT Battery Model/No:	
Filename:	NEC_N5102_1900RH_Tilt15_B.txt	Probe Serial Number:	0177
Ambient Temperature:	24.0°C	Liquid Simulant:	Head tissue
Device Under Test:	NEC	Relative Permittivity:	41.21
Relative Humidity:	45%	Conductivity:	1.364
Phantom S/No:	Head_380SH.csv	Liquid Temperature:	23.3°C
Phantom Rotation:	180°	Max SAR Y-axis Location:	36.57 mm
DUT Position:	1900RH_Tilt15_B	Max SAR Z-axis Location:	-140.50 mm
Antenna Configuration:	build inside	Max E Field:	4.09 V/m
Test Frequency:	1900MHz	SAR 1g:	0.022 W/kg
Air Factors:	417 / 368 / 414	SAR 10g:	0.016 W/kg
Conversion Factors:	.326 / .326 / .326	SAR Start:	0.008 W/kg
Type of Modulation:	GMSK	SAR End:	0.009 W/kg
Modn. Duty Cycle:	GSM:8; GPRS:4	SAR Drift during Scan:	0.21 dB
Diode Compression Factors (V*200):	20 / 20 / 20	Probe battery last changed:	20/05/05
Input Power Level:	Level0(30dBm)	Extrapolation:	poly4



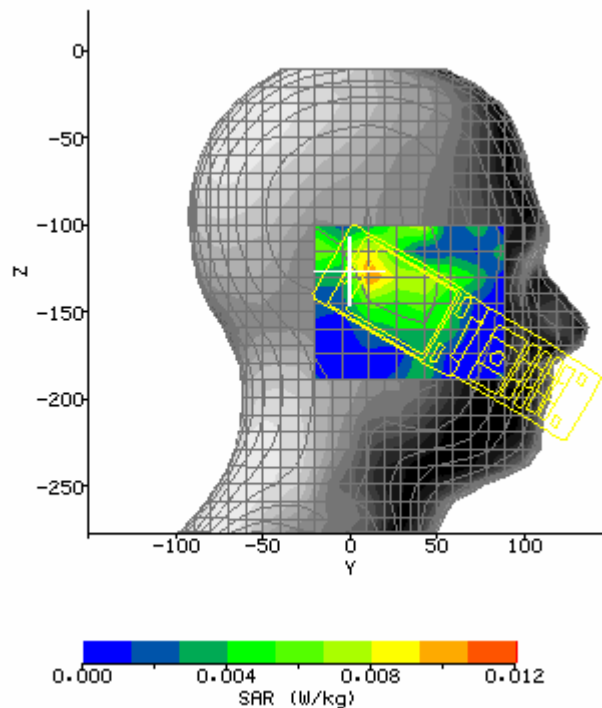
### SAR Test GSM 1900 RH\_Tilt15 (Middle Channel)

System / software:	SARA2 / 2.33 VPM	Input Power Drift:	
Date / Time:	2005-7-11 17:00:22	DUT Battery Model/No:	
Filename:	NEC_N5102_1900RH_Tilt15_M.txt	Probe Serial Number:	0177
Ambient Temperature:	24.0°C	Liquid Simulant:	Head tissue
Device Under Test:	NEC	Relative Permittivity:	41.21
Relative Humidity:	46%	Conductivity:	1.364
Phantom S/No:	Head_380SH.csv	Liquid Temperature:	23.3°C
Phantom Rotation:	180°	Max SAR Y-axis Location:	39.71 mm
DUT Position:	1900RH_Tilt15_M	Max SAR Z-axis Location:	-143.50 mm
Antenna Configuration:	build inside	Max E Field:	3.57 V/m
Test Frequency:	1900MHz	SAR 1g:	0.020 W/kg
Air Factors:	417 / 368 / 414	SAR 10g:	0.013 W/kg
Conversion Factors:	.326 / .326 / .326	SAR Start:	0.006 W/kg
Type of Modulation:	GMSK	SAR End:	0.007 W/kg
Modn. Duty Cycle:	GSM:8; GPRS:4	SAR Drift during Scan:	0.20 dB
Diode Compression Factors (V*200):	20 / 20 / 20	Probe battery last changed:	20/05/05
Input Power Level:	Level0(30dBm)	Extrapolation:	poly4



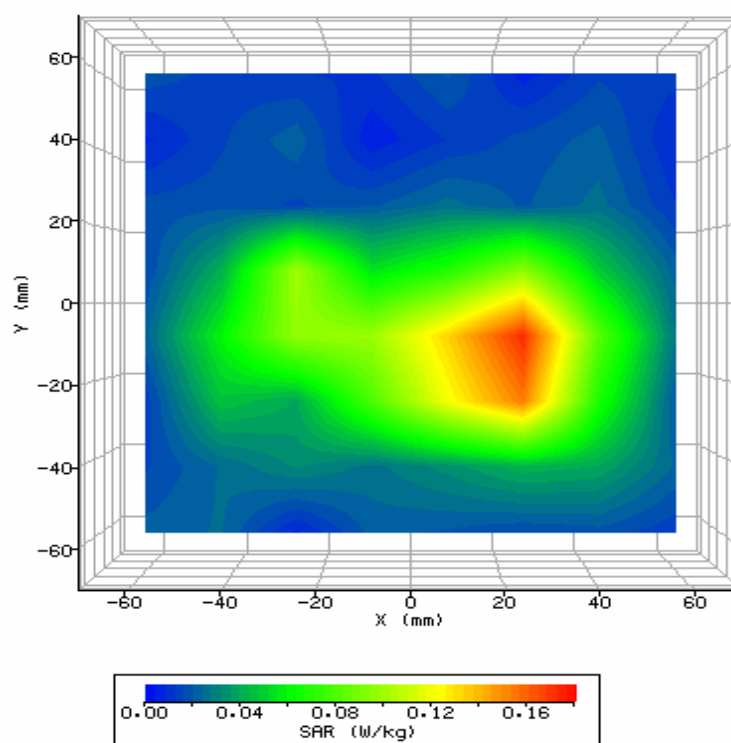
### SAR Test GSM 1900 RH\_Tilt15 (Top Channel)

System / software:	SARA2 / 2.33 VPM	Input Power Drift:	
Date / Time:	2005-7-11 16:45:08	DUT Battery Model/No:	
Filename:	NEC_N5102_1900RH_Tilt15_T.txt	Probe Serial Number:	0177
Ambient Temperature:	23.9°C	Liquid Simulant:	Head tissue
Device Under Test:	NEC	Relative Permittivity:	41.21
Relative Humidity:	45%	Conductivity:	1.364
Phantom S/No:	Head_380SH.csv	Liquid Temperature:	23.3°C
Phantom Rotation:	180°	Max SAR Y-axis Location:	14.57 mm
DUT Position:	1900RH_Tilt15_T	Max SAR Z-axis Location:	-127.00 mm
Antenna Configuration:	build inside	Max E Field:	3.59 V/m
Test Frequency:	1900MHz	SAR 1g:	0.015 W/kg
Air Factors:	417 / 368 / 414	SAR 10g:	0.011 W/kg
Conversion Factors:	.326 / .326 / .326	SAR Start:	0.007 W/kg
Type of Modulation:	GMSK	SAR End:	0.008 W/kg
Modn. Duty Cycle:	GSM:8; GPRS:4	SAR Drift during Scan:	0.19 dB
Diode Compression Factors (V*200):	20 / 20 / 20	Probe battery last changed:	20/05/05
Input Power Level:	Level0(30dBm)	Extrapolation:	poly4



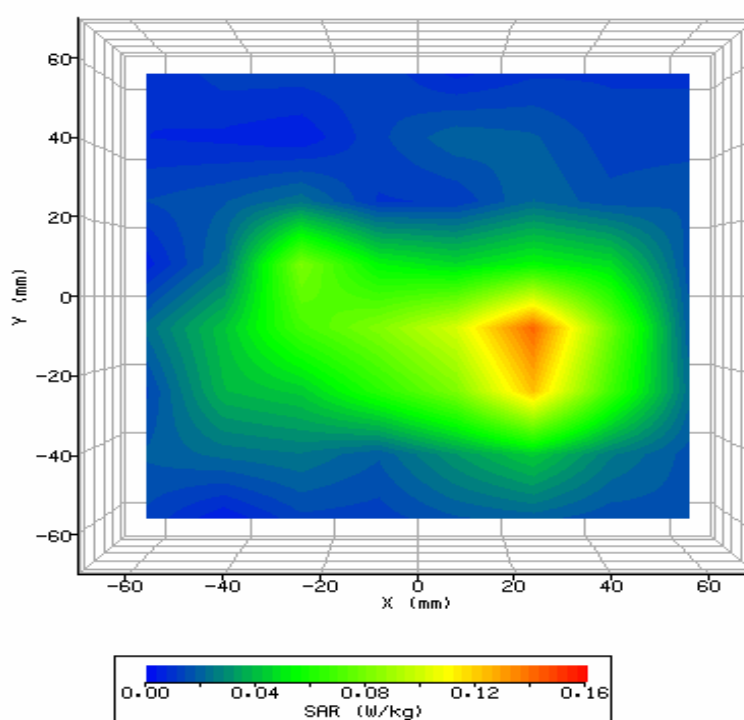
### SAR Test GSM 1900 Side (Bottom Channel)

System / software:	SARA2 / 2.33 VPM	Input Power Drift:	
Date / Time:	2005-7-14 16:41:48	DUT Battery Model/No:	
Filename:	NEC_N5102_1900Body_Side_B.txt	Probe Serial Number:	0177
Ambient Temperature:	23.6°C	Liquid Simulant:	Body tissue
Device Under Test:	NEC_N5102	Relative Permittivity:	53.68
Relative Humidity:	44%	Conductivity:	1.498
Phantom S/No:	HeadBox75mm.csv	Liquid Temperature:	23.3°C
Phantom Rotation:	0°	Max SAR X-axis Location:	20.57 mm
DUT Position:	1900Body_Side_B	Max SAR Y-axis Location:	-13.71 mm
Antenna Configuration:	build inside	Max E Field:	11.23 V/m
Test Frequency:	1900MHz	SAR 1g:	0.218 W/kg
Air Factors:	417 / 368 / 414	SAR 10g:	0.141 W/kg
Conversion Factors:	.356 / .356 / .356	SAR Start:	0.072 W/kg
Type of Modulation:	GMSK	SAR End:	0.071 W/kg
Modn. Duty Cycle:	GSM:8; GPRS:4	SAR Drift during Scan:	-0.08 dB
Diode Compression Factors (V*200):	20 / 20 / 20	Probe battery last changed:	20/05/05
Input Power Level:	Level0(30dBm)	Extrapolation:	poly4



### SAR Test GSM 1900 Side (Middle Channel)

System / software:	SARA2 / 2.33 VPM	Input Power Drift:	
Date / Time:	2005-7-14 16:02:31	DUT Battery Model/No:	
Filename:	NEC_N5102_1900Body_Side_M.txt	Probe Serial Number:	0177
Ambient Temperature:	23.5°C	Liquid Simulant:	Body tissue
Device Under Test:	NEC_N5102	Relative Permittivity:	53.68
Relative Humidity:	45%	Conductivity:	1.498
Phantom S/No:	HeadBox75mm.csv	Liquid Temperature:	23.3°C
Phantom Rotation:	0°	Max SAR X-axis Location:	24.00 mm
DUT Position:	1900Body_Side_M	Max SAR Y-axis Location:	-13.71 mm
Antenna Configuration:	build inside	Max E Field:	10.29 V/m
Test Frequency:	1900MHz	SAR 1g:	0.188 W/kg
Air Factors:	417 / 368 / 414	SAR 10g:	0.118 W/kg
Conversion Factors:	.356 / .356 / .356	SAR Start:	0.044 W/kg
Type of Modulation:	GMSK	SAR End:	0.046 W/kg
Modn. Duty Cycle:	GSM:8; GPRS:4	SAR Drift during Scan:	0.12 dB
Diode Compression Factors (V*200):	20 / 20 / 20	Probe battery last changed:	20/05/05
Input Power Level:	Level0(30dBm)	Extrapolation:	poly4



### SAR Test GSM 1900 Side (Top Channel)

System / software:	SARA2 / 2.33 VPM	Input Power Drift:	
Date / Time:	2005-7-14 15:43:50	DUT Battery Model/No:	
Filename:	NEC_N5102_1900Body_Side_T.txt	Probe Serial Number:	0177
Ambient Temperature:	23.6°C	Liquid Simulant:	Body tissue
Device Under Test:	NEC_N5102	Relative Permittivity:	53.68
Relative Humidity:	45%	Conductivity:	1.498
Phantom S/No:	HeadBox75mm.csv	Liquid Temperature:	23.3°C
Phantom Rotation:	0°	Max SAR X-axis Location:	24.00 mm
DUT Position:	1900Body_Side_T	Max SAR Y-axis Location:	-8.57 mm
Antenna Configuration:	build inside	Max E Field:	9.71 V/m
Test Frequency:	1900MHz	SAR 1g:	0.157 W/kg
Air Factors:	417 / 368 / 414	SAR 10g:	0.105 W/kg
Conversion Factors:	.356 / .356 / .356	SAR Start:	0.046 W/kg
Type of Modulation:	GMSK	SAR End:	0.047 W/kg
Modn. Duty Cycle:	GSM:8; GPRS:4	SAR Drift during Scan:	0.11 dB
Diode Compression Factors (V*200):	20 / 20 / 20	Probe battery last changed:	20/05/05
Input Power Level:	Level0(30dBm)	Extrapolation:	poly4

