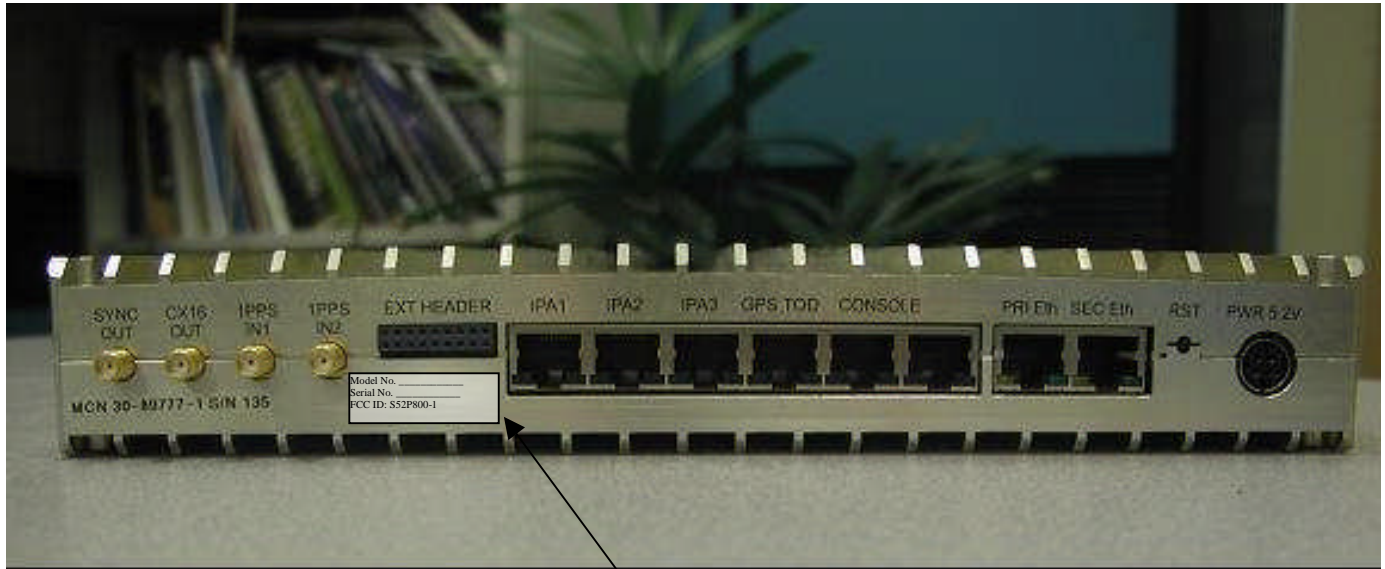




## **Label Information**

**FCC ID: S52P800-1**

Model No. \_\_\_\_\_  
Serial No. \_\_\_\_\_  
FCC ID: S52P800-1



Label location

In addition, the Label to be used on the outside of enclosures or rack mount chassis would make reference to: "Contains FCC ID" as required for Modular Transceiver. Following is an example of this label:

Model No. \_\_\_\_\_  
Serial No. \_\_\_\_\_  
Contains FCC ID: S52P800-1