

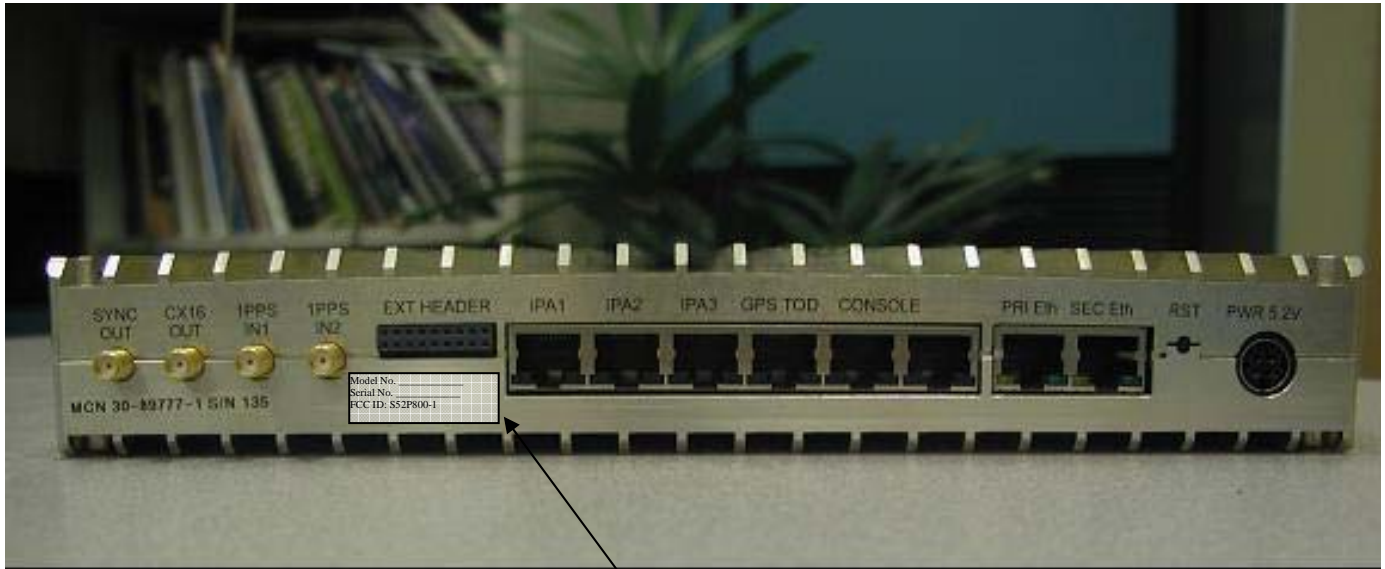


Label Information

FCC ID: S52P1900-1



UTStarcom
Model No. _____
Serial No. _____
FCC ID: S52P1900-1



Label location

In addition, the Label to be used on the outside of enclosures or rack mount chassis would make reference to: "Contains FCC ID" as required for Modular Transceiver. Following is an example of this label:

UTStarcom
Model No. _____
Serial No. _____
Contains FCC ID: S52P1900-1