



EVDO Pico BTS Label Location

Revision: 1.0

Issue Date: September 19, 2007

UTStarcom Confidential and Proprietary

UTStarcom Canada
4600 Jacombs Road

Richmond, BC
Canada V6V 3B1
Phone (604) 276-0055
Fax (604) 276-0501

©2007UTStarcom Canada. All rights reserved.

Printed in Canada.

This document contains proprietary information of UTStarcom Canada and its affiliates and subsidiaries. The contents are Company Confidential and any disclosure to persons other than the officers, employees, agents, or subcontractors of the owner or licensee of these materials, without the prior written consent of UTStarcom Canada, is strictly prohibited.

No part of this document, or any software included with it, may be reproduced, stored in a retrieval system, or transmitted in any form or by any means, including photocopying, electronic, mechanical, recording, or otherwise, without the prior written permission of the copyright holder.

Product names mentioned in this document are trademarks or registered trademarks of their respective companies and are hereby acknowledged.

This document may contain technical inaccuracies or typographical errors. UTStarcom Canada waives responsibility for any labor, materials, or costs incurred by any person or party as a result of using this document. UTStarcom Canada or other affiliates shall not be liable for any damages (including, but not limited to, consequential, indirect or incidental, special damages or loss of profits or data) even if they were foreseeable and UTStarcom Canada has been informed of their potential occurrence, arising out of or in connection with this document or its use.

1. Label Location Diagram

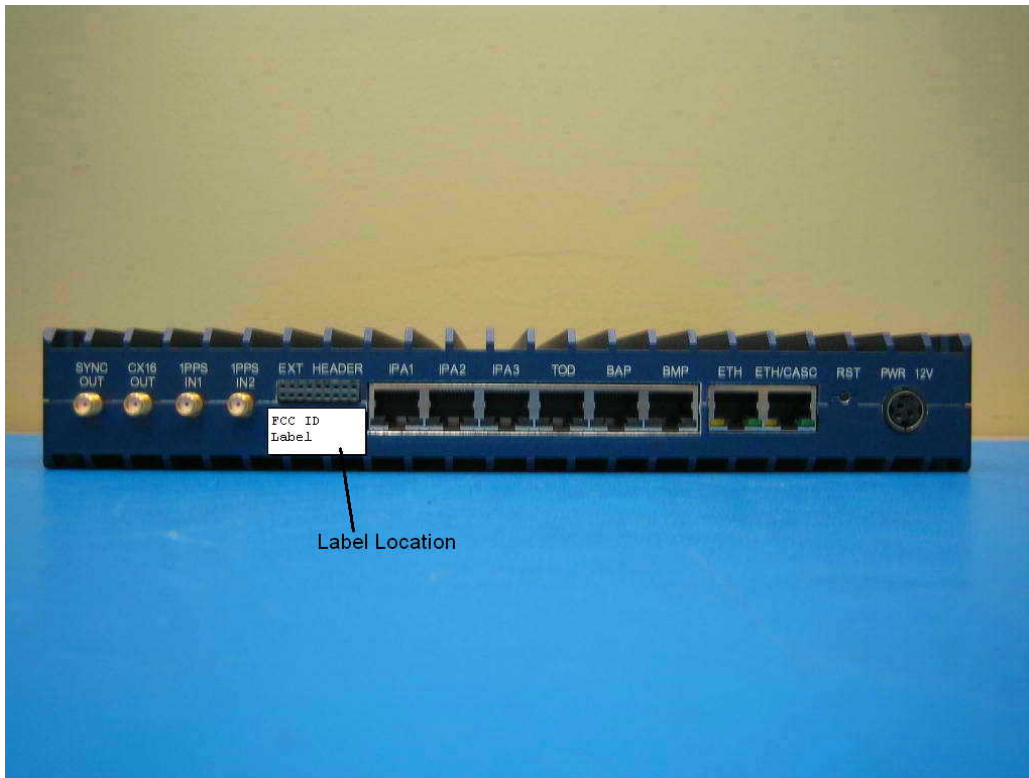


Figure 1 - Label Location Diagram

In addition, the label to be used on the outside of enclosures or rack mount chassis would make reference to:

“Contains FCC ID” as required for Modular Transceiver. Following is an example of this label:

