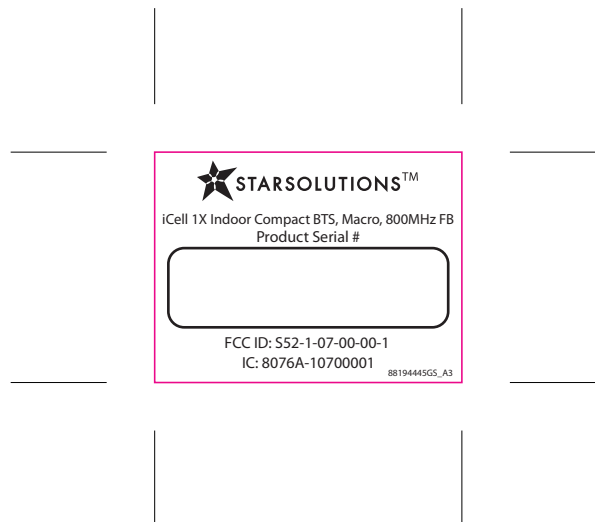


iCell BTS FCC ID / IC Label  
Part Number: 88194445GS Rev A3



SIZE: 1.20" x 1.60" (SQUARE CORNERS)

MATERIAL: 5 mil VELVET MATTE LEXAN WITH 3M 468MP TRANSFER ADHESIVE

FLAMMABILITY CLASS: UL HB75 IS ACCEPTABLE HOWEVER UL 94V0 IS PREFERRED

THIS PART MUST BE RoHS COMPLIANT

DIE LINE DOES NOT PRINT

WHITE FLOODS BEHIND THE ENTIRE PIECE

ALL TEXT IN PANTONE BLACK

Please refer to Pantone® Color Specifier for exact colors.



flood  
white

LABEL, FCC Part 15, COMPACT MACRO BTS, 1"x4", RoHS  
Part Number: 88194472GS Rev A0

This device complies with Part 15 of the FCC rules.  
Operation is subject to the following two conditions:  
(1) This device may not cause harmful interference,  
and  
(2) This device must accept any interference  
received, including interference that may cause  
undesired operation.

This Class A digital apparatus meets all  
requirements of the Canadian Interference -  
Causing Equipment Regulations.

Cet appareil numérique de la class A  
respecte toutes les exigences du Règlement  
sur le matériel brouilleur du Canada.

88194472GS Rev A0

SIZE: 1.00" x 4.00" (SQUARE CORNERS)

MATERIAL: 5 mil VELVET MATTE LEXAN WITH 3M 468MP TRANSFER ADHESIVE

FLAMMABILITY CLASS: UL HB75 IS ACCEPTABLE HOWEVER UL 94V0 IS PREFERRED

THIS PART MUST BE RoHS COMPLIANT

DIE LINE DOES NOT PRINT

WHITE FLOODS BEHIND THE ENTIRE PIECE

ALL TEXT IN PANTONE BLACK

Please refer to Pantone® Color Specifier for exact colors.

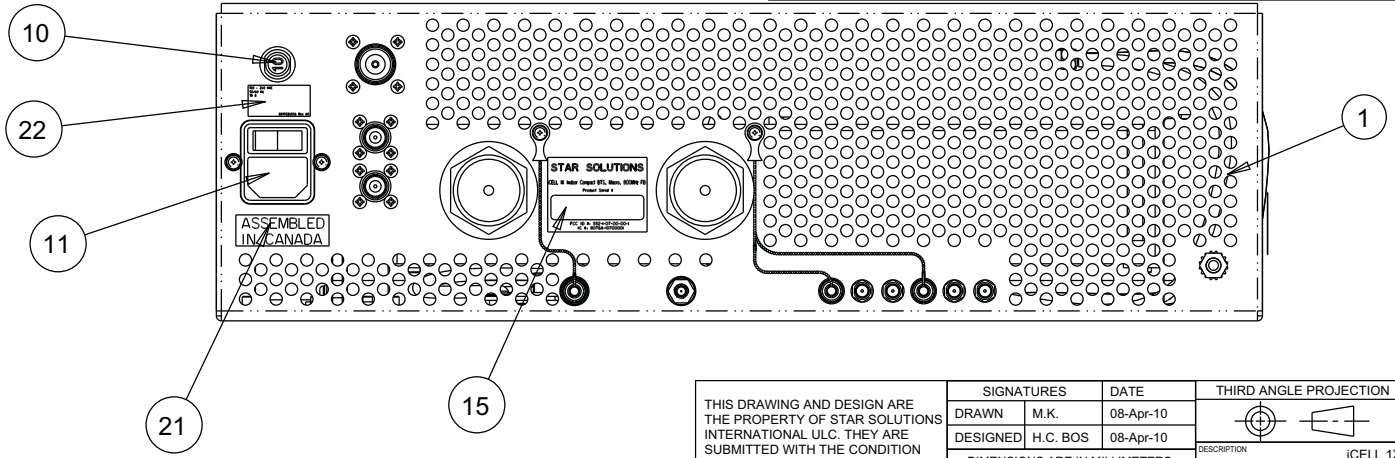


flood  
white

24246626DWGS

INDEX	DESCRIPTION	QTY	PART NO.
1	iCELL COMPACT BTS,SECTOR 1 MAIN,AC,2F MECH SUB ASSY	1	41061200GS
2	3U COMPACT BTS FAN ASSEMBLY	1	24244746GS
3	PSU, 63W, AC/DC, OPFR, DUAL, 5V/12V, iBTS	1	PXX00292GS
4	iCELL SCPA 800MHz, 54dB, 27VDC (Rev 2)	1	QXX05000GS
5	3U 800MHz FULL BAND DUPLEXER/FILTER	1	QXX11461GS
6	1X BTS MODULE, MACRO 3S, 800MHz, ASSEMBLY	1	24242836GS
7	POWER SUPPLY, AC/DC, 85-264Vin, 24Vout, 648W, 3.94x3.23x6.5", -10/70C	1	PXX00936GS
8	3U ACMJ BOARD ASSEMBLY	1	29904762GS
9	LNA/SPLITTER ASSEMBLY FOR 3U, 800MHz	1	24241797GS
10	CIRCUIT BREAKER, 1 POLE, 10A, 250VAC, PUSH TO RESET, SERIES TRIP, PANEL MOUNT, 0/+60C	1	NXX06300GS
11	CONN POWER ENTRY MODULE, 10A, FILTERED W/SWITCH REAR, PANEL MOUNT 1-2 POLE	1	HXX07658GS

INDEX	DESCRIPTION	QTY	PART NO.
12	iCELL 1X COMPACT MACRO BTS, SECTOR 1 MAIN, 800MHz CABLES AND ACCESSORIES KIT	1	24246629GS
13	THERMALLY CONDUCTIVE COMPOUND	1mL	NXX07308GS
14	LABELS, 3U FRONT PANEL, 800MHz	1	88194455GS
15	LBL,iCELL 1x Indoor Compact BTS,Macro,800MHz FB	1	88194445GS
16	RTV GLASS AND METAL SEALANT, CLEAR, -57 TO 177C, ONE PART SILICONE	2mL	NXX04429GS
17	STANDOFF, PCB SUPPORT, 1/4", NYLON	4	KXX01810GS
18	RESOLUTION T EMBEDDED GPS MODULE	1	QXX04471GS
19	LABEL, SECURITY, TAMPER EVIDENT 1"x2.5"	2	88191347GS
20	LBL, UL, COMPACT BTS TOP, 1"x 8"	1	88193085GS
21	LBL,"MADE IN CANADA"	1	88193086GS
22	LBL, POWER RATINGS, COMPACT BTS, 1"x0.5"	1	88193265GS
23	LBL, FAN CAUTION, COMPACT BTS TOP, 1"x1.7"	1	88193264GS
24	INSULATOR PAD FOR 3U POWER SUPPLY	1	89400242GS
25	FCC PART 15 LABEL	1	88194472GS



REAR VIEW

THIS DRAWING AND DESIGN ARE THE PROPERTY OF STAR SOLUTIONS INTERNATIONAL ULC. THEY ARE SUBMITTED WITH THE CONDITION THAT THEY ARE NOT TO BE REPRODUCED OR COPIED, IN PART OR IN WHOLE, USED TO FURNISH INFORMATION TO OTHERS, OR FOR ANY OTHER PURPOSE THAT MAY BE DEEMED DETRIMENTAL TO THE INTERESTS OF STAR SOLUTIONS INTERNATIONAL ULC.

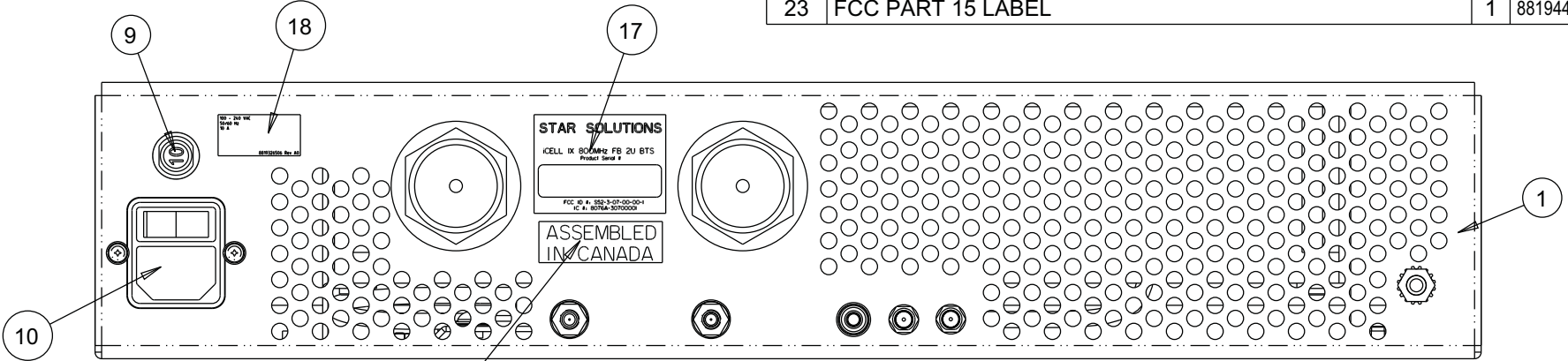
SIGNATURES		DATE	THIRD ANGLE PROJECTION			
DRAWN	M.K.	08-Apr-10				
DESIGNED	H.C. BOS	08-Apr-10	DESCRIPTION		iCELL 1X COMPACT BTS,MACRO,1F, SECTOR 1 MAIN,800MHz FULLBAND,SCPA,AC ASSY DWG	
DIMENSIONS ARE IN MILLIMETERS UNLESS OTHERWISE SPECIFIED			DWG NO.	REV.	SCALE	SIZE
TOLERANCES:			24246626DWGS	A3	0.750	B
2 PL DECIMALS ±			MATERIAL			
3 PL DECIMALS ±			N/A			
ANGLES ±			APPLIED FINISH			
SURFACE ROUGHNESS (Ra): 1.6um			N/A			
						SHEET
						2 OF 14

FILE NAME: 24246626DWGS\_A3

24245903DWGS

INDEX	DESCRIPTION	QTY	PART NO.
1	iCELL COMPACT BTS,SECTOR 2/3,AC,MECHANICAL SUB ASSY	1	41060840GS
2	2U COMPACT BTS FAN ASSEMBLY	1	24244745GS
3	POWER SUPPLY AC-DC 90/264VacIN DUAL 12V/12VdcOUT 12.5/0.5AOUT 125W or 150W 3"x5"	1	PXX01745GS
4	iCELL SCPA 800MHz, 54dB, 27VDC (Rev 2)	1	QXX05000GS
5	3U 800MHz FULL BAND DUPLEXER/FILTER	1	QXX11461GS
6	POWER SUPPLY, AC/DC, 85-264Vin, 24Vout, 648W, 3.94x3.23x6.5", -10/70C	1	PXX00936GS
7	3U ACMJ BOARD ASSEMBLY	1	29904762GS
8	LNA/SPLITTER ASSEMBLY FOR 2U, 800MHZ	1	24241929GS
9	CIRCUIT BREAKER,1 POLE,10A,250VAC,PUSH TO RESET SERIES TRIP PANEL MOUNT,0/+60C	1	NXX06300GS
10	CONN POWER ENTRY MODULE, 10A FILTERED W/SWITCH, REAR PANEL MOUNT, 1-2 POLE	1	HXX07658GS

INDEX	DESCRIPTION	QTY	PART NO.
11*	iCELL COMPACT MACRO BTS 1F, SECTOR 2/3, CABLES AND ACCESSORIES KIT	1	24245123GS
12	THERMALLY CONDUCTIVE COMPOUND	1mL	NXX07308GS
13	LABELS, 3U FRONT PANEL, 800MHZ	1	88194455GS
14	LBL, FCC, COMPACT BTS TOP, 1"x8"	1	88193085GS
15	LABEL, SECURITY, TAMPER EVIDENT, 1"x2.5"	2	88191347GS
16	LBL, "MADE IN CANADA"	1	88193086GS
17	LBL,FCC,iCELL 1x Indoor Compact BTS,Macro,800MHz FULLBAND,	1	88194445GS
18	LBL, POWER RATINGS, COMPACT BTS, 1"x0.5"	1	88193265GS
19	LBL,FAN CAUTION,COMPACT BTS TOP, 1"x1.7"	1	88193264GS
20	RTV GLASS AND METAL SEALANT, CLEAR, -57 TO 177C, ONE PART SILICONE	2mL	NXX04429GS
21	INSULATOR PAD FOR 3U POWER SUPPLY	1	89400242GS
22	CONN, JUMPER, CAP STRIP, 2.54PITCH, WHITE, HEIGHT:5.1mm	1	HXX02331GS
23	FCC PART 15 LABEL	1	88194472GS



REAR VIEW

\*REFER TO CABLES AND ACCESSORIES KIT 24245123GS (ITEM 11) FOR ALL CABLE CONNECTION DETAILS.

THIS DRAWING AND DESIGN ARE THE PROPERTY OF STAR SOLUTIONS INTERNATIONAL ULC. THEY ARE SUBMITTED WITH THE CONDITION THAT THEY ARE NOT TO BE REPRODUCED OR COPIED, IN PART OR IN WHOLE, USED TO FURNISH INFORMATION TO OTHERS, OR FOR ANY OTHER PURPOSE THAT MAY BE DEEMED DETRIMENTAL TO THE INTERESTS OF STAR SOLUTIONS INTERNATIONAL ULC.

SIGNATURES		DATE	THIRD ANGLE PROJECTION			
DRAWN	M.K.	08-Apr-10				
DESIGNED	H.C. BOS	08-Apr-10	DESCRIPTION		iCELL COMPACT BTS MACRO,1F, SECTOR 2/3,800MHz FB,SCPA,AC ASSY DWG	
DIMENSIONS ARE IN MILLIMETERS UNLESS OTHERWISE SPECIFIED			DWG NO.	REV.	SCALE	SIZE
TOLERANCES:			24245903DWGS	A3	0.750	B
2 PL DECIMALS ±			MATERIAL			
3 PL DECIMALS ±			N/A			
ANGLES ±			APPLIED FINISH			
SURFACE ROUGHNESS (Ra): 1.6um			N/A			
						SHEET
						2 OF 13

FILE NAME: 24245903DWGS\_A3