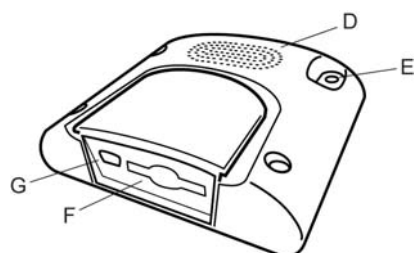
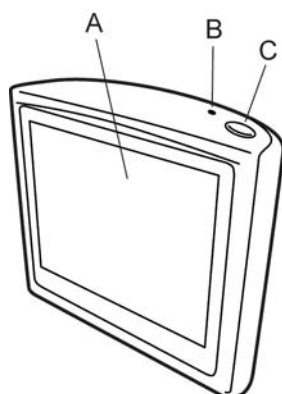


EN

What's in the box

1 Your TomTom ONE



- Ⓐ Touchscreen
- Ⓑ Charging LED
- Ⓒ On/off button
- Ⓓ Speaker
- Ⓔ External antenna connector
- Ⓕ Memory card slot
- Ⓖ USB connector

2 Windscreen Holder



3 Memory card (SD card)*



4 USB Car Charger



5 USB cable



6 Product code card



7 Documentation packLimerick



* Not included in all products

Getting started

EN

Important

- Everyone loves TomTom ONE, so never leave your ONE in your car when you're not using it - it's an easy target for thieves.
- Make sure your windscreen is clean and dry before trying to attach the holder.
- Place the windscreen holder so it does not block your view of the road.
- Make a backup of your TomTom ONE. You can make a backup using TomTom HOME. For more information, see **TomTom HOME** on page 8.
- To make driving even safer with your TomTom ONE, use the **Safety preferences** in the Preferences menu.

Setting up

You have to answer a few questions to set up your TomTom ONE. Answer the questions by tapping the screen. You will use the touchscreen for everything you do with your ONE.

Locating your current position

Your TomTom ONE must be outdoors to locate your current position. The first time you start your ONE, it can take up to 5 minutes to find your current position. If it takes longer than 5 minutes, make sure that you are in an open place without tall buildings or trees around you.

Once your ONE has located your current position, the Driving View is shown in full colour and shows your position on the map.

Switching on

Follow the instructions on the Installation Poster to mount your TomTom ONE in your car.

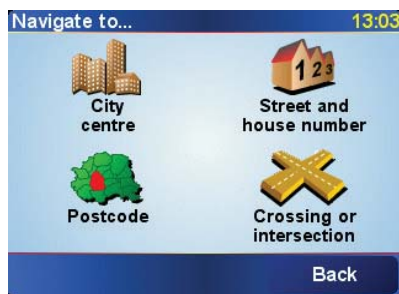
The first time you switch on your TomTom ONE, it may take up to 20 seconds to start. To switch off your TomTom ONE, press and hold the On/Off button for 2 seconds.

Note: Your TomTom ONE does not transmit your position. You can however send your position to TomTom Buddies. For more information, visit www.tomtom.com/plus

Note: Some vehicles have a heat reflective shield embedded in the windscreen, which may prevent TomTom ONE from locating your current position. If this is a problem in your vehicle, use the TomTom External Antenna Kit (available as an accessory). Limerick

EN

Making your first journey



Planning a route with your TomTom ONE is very simple. To plan your first route, follow the steps below.

1. Tap the screen to bring up the main menu.
2. Tap **Navigate to...**
3. Tap **Address**.

When you enter an address, you can choose from four options:

- **City centre** - tap this button to set your destination as the centre of a city or town.
- **Street and house number** - tap this button to set an exact address as your destination.
- **Postcode** - tap this button to enter a postcode as your destination (fully supported only in UK and the Netherlands).
- **Crossing or intersection** - tap this button to set your destination as the point where two streets meet.

For your first journey, we will enter an exact address.

4. Tap **Street and house number**.

Making your first journey

5. Start to type the name of the town where you want to go.

As you type, the names of the towns that match what you have typed are shown.

6. Start to type the name of the street.

As with the name of the town, the names of the streets that match what you have typed are shown.

7. Now enter the house number of your destination and then tap **Done**.

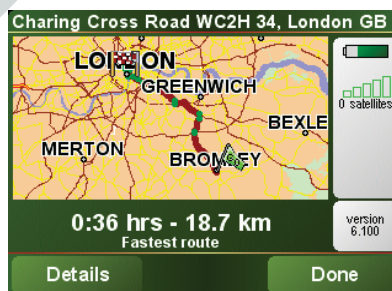
8. Your ONE asks you whether you need to arrive at a particular time.

Tap **YES** to enter an arrival time. Your ONE shows you whether you will arrive on time.

9. When the route has been calculated, tap **Done**.

Your TomTom ONE will immediately start guiding you to your destination with spoken instructions and visual instructions on the screen.

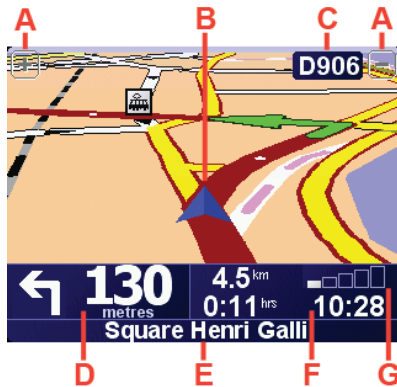
Note: Before you can plan a route in this way, your TomTom ONE must first locate your current position.



EN

Using your TomTom ONE

Driving View



- Ⓐ Buttons to zoom in and zoom out on your position.
- Ⓑ Your current position.
- Ⓒ The name of the next major road or road sign information, if applicable.
- Ⓓ The next instruction.
Tap this area to repeat the last spoken instruction and to change the volume.
- Ⓔ The name of the next street to turn onto.
- Ⓕ Information about your journey.
- Ⓖ Indicator of the strength of the GPS signal.

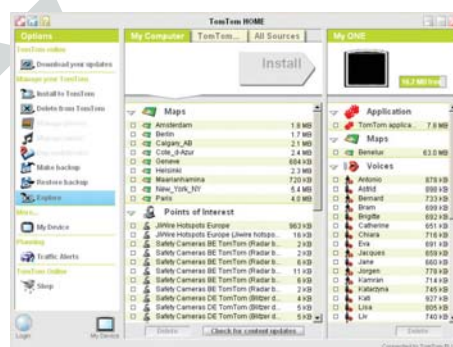
TomTom HOME

Using TomTom HOME, you can, for example, do the following:

- Make and restore backups of your TomTom ONE.
- Manage the maps, voices, POIs and other extras on your ONE.
- Buy TomTom PLUS services and manage your subscriptions.

To install TomTom HOME, put the CD which came with your ONE into your computer. Connect your TomTom ONE to your computer using the USB cable. Switch on your ONE and TomTom HOME starts automatically.

Note: The battery in your ONE will charge when connected to your computer, but it will charge slowly (4 hours). You should also switch your ONE off to charge it using the computer.



EN

TomTom Traffic



The Traffic Message Channel (TMC)

The TMC is not a TomTom service, but is offered free-of-charge in many countries. TMC transmits traffic information as a radio signal. To use TMC you need to buy the TomTom RDS-TMC Traffic Receiver.

Note: TomTom is not responsible for the availability or quality of traffic information provided by TMC. TMC is not available in all countries or regions.

Setting up TMC

To start using TMC, connect the TMC antenna to the windscreen mount. Plug the TMC antenna into the TomTom connector.

You can get traffic information in two ways:

- From TomTom Traffic
- From the Traffic Message Channel (TMC)

TomTom Traffic

TomTom Traffic is a TomTom PLUS service. To use TomTom Traffic you must have a mobile phone with Bluetooth and a wireless data connection, for example, GPRS.

TomTom Traffic takes the most up-to-date information from the best local sources. Use the free trial to try TomTom Traffic. For more information, see the TomTom PLUS leaflet.

Note: TomTom Traffic is not available in all countries. Visit www.tomtom.com/plus to check availability in your country.

Setting up TomTom Traffic

To receive TomTom Traffic, first establish a connection between your mobile phone and your TomTom GO. See **Connecting to your phone** on page 18. Then do the following:

1. Tap **TomTom Traffic** in the Main Menu.
2. Tap **Enable Traffic**.

TomTom limited warranty

WARRANTOR

Non-U.S. and non-Canadian purchases: If you have made your purchase outside the United States and Canada, this Limited Warranty is granted by and this Limitation of Liability is stipulated for the benefit of TomTom International B.V., Rembrandtplein 35, 1017 CT Amsterdam (The Netherlands).

WHAT THIS WARRANTY COVERS

1) TomTom International B.V. ("TomTom") warrants to you that the Hardware will be free from defects in workmanship and materials under normal use ("Defects") for a period of two (2) years from the date that the Hardware was first purchased by you ("Warranty Period"). During the Warranty Period the Hardware will be repaired or replaced at TomTom's choice ("Limited Warranty") without charge to you for either parts or labour. This Limited Warranty covers the replacement of the Hardware only. If the Hardware is repaired after the Warranty Period has expired, the Warranty Period for the repair will expire six (6) months after the date of repair.

WHAT THIS WARRANTY DOES NOT COVER

2) The Limited Warranty does not apply to normal wear and tear, does not apply when the Hardware is opened or repaired by someone not authorized by TomTom and does not cover repair or replacement of any Hardware or part thereof damaged by: misuse, moisture, liquids, proximity or exposure to heat and accident, abuse, non-compliance with the instructions supplied with the Hardware, neglect or misapplication. The Limited Warranty does not cover physical damage to the surface of the Hardware. This Limited Warranty does not cover any software that may accompany or be installed on the Hardware.

HOW TO MAKE A WARRANTY CLAIM

3) In order to make a claim of a Defect, you must contact TomTom by email during the Warranty Period via www.tomtom.com to explain the Defect and to obtain an RMA number (Return Materials Authorization) if necessary. You must return the Hardware during the Warranty Period, along with an explanation of the Defect, to the address provided to you by TomTom. If a defect arises and a valid claim under this Limited Warranty is received by TomTom after the first one hundred and eighty (180) days of the Warranty Period, TomTom is entitled to charge you for any reasonable shipping and handling costs made in connection with the repair or replacement of the Hardware. You must comply with any other return procedures stipulated by TomTom, if any.

YOUR LEGAL RIGHTS

4) Some countries may not allow the exclusion or limitation of damages. If any part of this Limited Warranty is held to be invalid or unenforceable, the remainder of the Limited Warranty shall nonetheless remain in full force and effect.

5) This Limited Warranty is the only express warranty made to you and is provided in lieu of any other express warranties or similar obligations (if any) created by any advertising, documentation, packaging, or other communications.

6) Except for the Limited Warranty and to the maximum extent permitted by applicable law, TomTom and its suppliers provide the Hardware "AS IS AND WITH ALL FAULTS", and hereby disclaim all other warranties and conditions, whether express, implied or statutory, including, but not limited to, any (if any) implied warranties, duties or conditions of satisfactory quality, of fitness for a

particular purpose, of reliability or availability, of accuracy or completeness of responses, of results, of workmanlike effort, of lack of viruses, and of reasonable care and skill, all with regard to the Hardware, and the provision of or failure to provide support or other services, information, software, and related content through the Hardware or otherwise arising out of the use of the Hardware. Also, there is no warranty or condition of quiet enjoyment, quiet possession, or non-infringement with regard to the Hardware. This exclusion does not apply to (i) any implied condition as to title and (ii) any implied warranty as to conformity with description.

7) This Limited Warranty does not affect any legal rights under applicable national legislation governing the sale of consumer goods.

8) This Limited Warranty cannot be transferred to any other person.

LIMITATION OF LIABILITY

9) Neither TomTom nor its suppliers shall be liable to you or to any third party for any damages either direct, indirect, incidental, consequential or otherwise (including in each case, but not limited to, damages for the inability to use the equipment or access data, loss of data, loss of business, loss of profits, business interruption or the like) arising out of the use of or inability to use the Hardware even if TomTom has been advised of the possibility of such damages.

10) Notwithstanding any damages that you might incur for any reason whatsoever (including, without limitation, all damages referenced herein and all direct or general damages in contract or anything else), the entire liability of TomTom and any of its suppliers shall be limited to the amount actually paid by you for the Hardware.

11) TomTom shall not be liable for (i) any fraud on the part of its employees and/or agents; or (ii) any fraudulent misrepresentation on the part of its employees and/or agents.

12) Notwithstanding the above, neither party's liability for death or personal injury resulting from its own negligence shall be limited. Limerick

Addendum

Important Safety Notices and Warnings

Global Positioning System

The Global Positioning System (GPS) is a satellite-based system that provides location and timing information around the globe. GPS is operated and controlled under the sole responsibility of the Government of the United States of America which is responsible for its availability and accuracy. Any changes in GPS availability and accuracy, or in environmental conditions, may impact the operation of your TomTom ONE. TomTom International B.V. and TomTom, Inc. cannot accept any liability for the availability and accuracy of GPS.

Use with Care

Use of TomTom ONE for navigation still means that you need to drive with due care and attention.

Aircraft and Hospitals

Use of devices with an antenna is prohibited on most aircraft, in many hospitals and in many other locations. TomTom ONE must not be used in these environments.

Battery

This product uses a Lithium-Ion battery. Do not use it in a humid, wet and/or corrosive environment. Do not put, store or leave your product in or near a heat source, in a high temperature location, in strong direct sunlight, in a microwave oven or in a pressurized container, and do not expose it to temperatures over 60 C (140 F). Failure to follow these guidelines may cause the Lithium-Ion battery to leak acid, become hot, explode or ignite and cause injury and/or damage. Do not pierce, open or disassemble the battery. If the battery leaks and you come into contact with the leaked fluids, rinse thoroughly with water and seek medical attention immediately. For safety reasons, and to prolong the lifetime of the battery, charging will not occur at low (below 0 C/32 F) or high (over 45 C/113 F) temperatures.

Temperatures: Standard operation: -10 C (14 F) to +55 C (131 F); short period storage: -20 C (-4 F) to +60 C (140 F); long period storage: -20 C (-4 F) to +25 C (77 F).



THE LITHIUM-ION BATTERY CONTAINED IN THE PRODUCT MUST BE RECYCLED OR DISPOSED OF PROPERLY. USE TOMTOM ONE ONLY WITH THE SUPPLIED DC POWER LEAD (CAR CHARGER) AND AC ADAPTER (HOME CHARGER) FOR BATTERY CHARGING.

To recycle your TomTom ONE unit please see your local approved TomTom service center.

SPECIAL NOTE REGARDING DRIVING IN CALIFORNIA

California Vehicle Code Section 26708 (a) (1) provides that "No persons shall drive any motor vehicle with an object or material placed, displayed, installed, affixed, or applied upon the windshield or side or rear windows." Drivers in California should not use a suction mount on their windshield, side or rear windows. TomTom Inc. bears no responsibility for any fines, penalties or damage that may be incurred by disregarding this notice. While driving in California, TomTom recommends the use of its Alternative Mounting Kit, which includes options for mounting TomTom devices on the dashboard and using the air vents. See www.tomtom.com for more information about this mounting option.

Note: this section of the California Vehicle Code applies to anyone driving in California, not just California residents.

FCC Information for the User

The device used for this transmitter must not be co-located simultaneously operating in conjunction with any other transmitter.

Exposure to Radio Frequency Radiation

To comply with RF exposure requirements please maintain a separation distance of at least 20 cm / 7 inches from any part of the product.

Radio and Television Interference

This equipment radiates radio frequency energy and if not used properly - that is, in strict accordance with the instructions in this

Addendum

manual - may cause interference to radio communications and television reception.

It has been tested and found to comply with the limits for a Class B digital device pursuant to part 15 of the FCC Rules. These are designed to provide reasonable protection against harmful interference in a residential installation. However, there is no guarantee that interference will not occur in a particular installation. If this equipment does cause harmful interference to radio or television reception, which can be determined by turning the equipment off and on, the user is encouraged to try to correct the interference by one or more of the following measures:

- Reorient or relocate the receiving antenna.
- Increase the separation distance between the equipment and the receiver.
- If you are using the equipment with a mains adapter, plug it into an outlet which is on a different circuit from that to which the receiver is connected.
- Consult an experienced radio/TV technician for help.

Important

This equipment was tested for FCC compliance under conditions that included the use of shielded cables and connectors between it and the peripherals. It is important that you use shielded cable and connectors to reduce the possibility of causing radio and television interference. Shielded cables, suitable for the product range, can be obtained from an authorised dealer. If the user modifies the equipment or its peripherals in any way, and these modifications are not approved by TomTom, the FCC may withdraw the user's right to operate the equipment. For customers in the USA, the following booklet prepared by the Federal Communications Commission may be of help: "How to Identify and Resolve Radio-TV Interference Problems". This booklet is available from the US Government Printing Office, Washington, DC 20402. Stock No 004-000-00345-4.

FCC Declaration of Conformity

Tested to Comply with FCC Standards for Home or Office Use

TomTom GO has been tested to – and complies with – part 15 of the FCC rules. Operation is subject to the following two conditions:

1. This device may not cause harmful interference.

2. This device must accept any interference received, including interference that may cause undesired operation.

Responsible party in North America

TomTom, Inc., 150 Baker Avenue, Concord, MA 01742

Tel: 866 48-6866 option 1 (1-866-4-TOMTOM)

Emissions information for Canada

This Class B digital apparatus complies with Canadian ICES-003. Cet appareil numérique de la classe B est conforme à la norme NMB-003 du Canada.

Ctick



N14644

This product displays the Ctick to show it complies with all relevant Australian and New Zealand regulations.

This Document

Great care was taken in preparing this manual. Constant product development may mean that some information is not entirely up-to-date. The information in this document is subject to change without notice.

TomTom International B.V. shall not be liable for technical or editorial errors or omissions contained herein; nor for incidental or consequential damages resulting from the performance or use of this material. This document contains information protected by copyright. No part of this document may be photocopied or reproduced in any form without prior written consent from TomTom International B.V.

Part numbers

TomTom ONE: 4N00.004.2, 4N00.005, 4N00.006, 4N00.012

Copyright notices

© 2007 TomTom International B.V., The Netherlands.
Patents Pending. All rights reserved.
TomTom and the TomTom logo are registered trademarks of TomTom International B.V., The Netherlands. All other trademarks are the property of their respective owners.
Our end user license agreement and a limited warranty apply to this product; they are included in this package. You can also review both at www.tomtom.com/legal

Data Source
© 2007 Tele Atlas N.V. Based upon:
Topografische ondergrond Copyright © dienst voor het kadaster en de openbare registers, Apeldoorn 2007.
© Ordnance Survey of Northern Ireland.
© IGN France.
© Swisstopo.
© BEV, GZ 1368/2007.
© Geonext/DeAgostini.
© Norwegian Mapping Authority, Public Roads Administration /
© Mapsolutions. © DAV.
This product includes mapping data licensed from Ordnance Survey with the permission of the Controller of Her Majesty's Stationery Office. © Crown copyright and/or database right 2007. All rights reserved. Licence number 100026920.

Data Source
© 2007 NAVTEQ; Austria © Bundesamt für Eich- und Vermessungswesen; France, source: GéoRoute® IGN France & BD Cartho® IGN France; Germany, Die Grundlagendaten wurden mit Genehmigung der zuständigen Behörden entnommen; Great Britain, based upon Crown Copyright material; Italy, La Banca Dati Italiana è stata prodotta usando quale riferimento anche cartografia numerica ed al tratto prodotta e fornita dalla Regione Toscana; Norway, copyright © 2000; Norwegian Mapping Authority; Portugal, source: IgeoE - Portugal; Spain, información geográfica propiedad del CNIG; Sweden, based upon electronic data © National Land Survey Sweden; Switzerland, Topografische Grundlage: © Bundesamt für Landestopographie. All Rights Reserved.