

APPENDIX

10. Photographs of Test Setup



Fig.1 Photograph of the SAR measurement system

Photograph of the tissue simulant fluid liquid depth (Body)

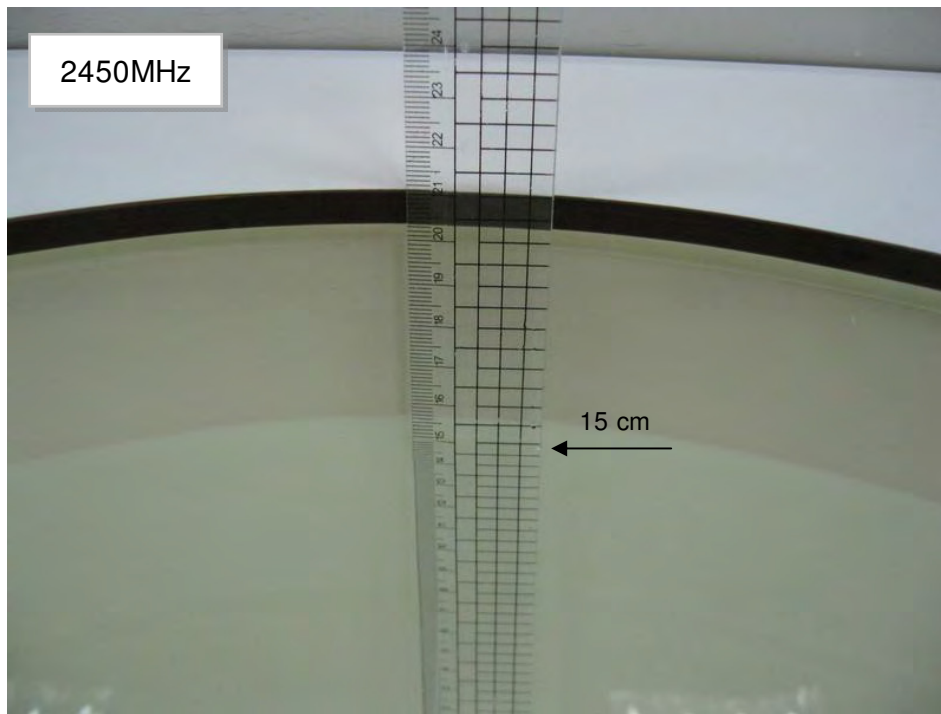


Fig.2

Body - distance between flat phantom and EUT is 5 mm

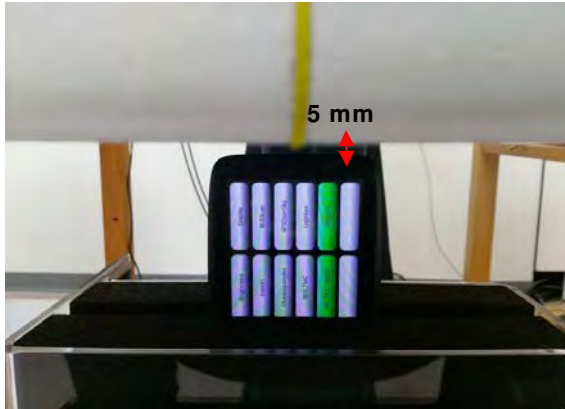


Fig.3 EUT Right side to flat phantom

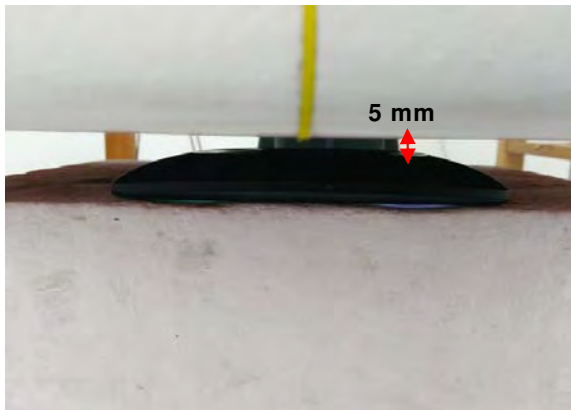


Fig.4 EUT Back side to flat phantom

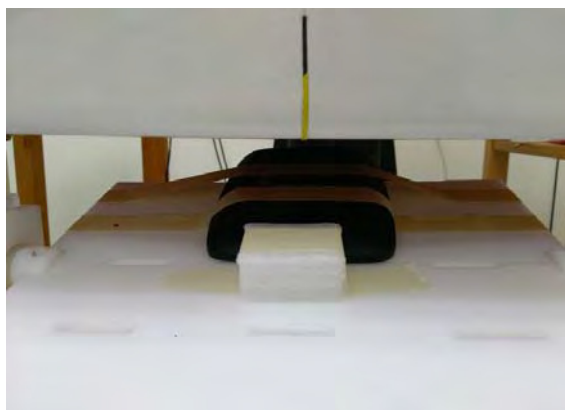
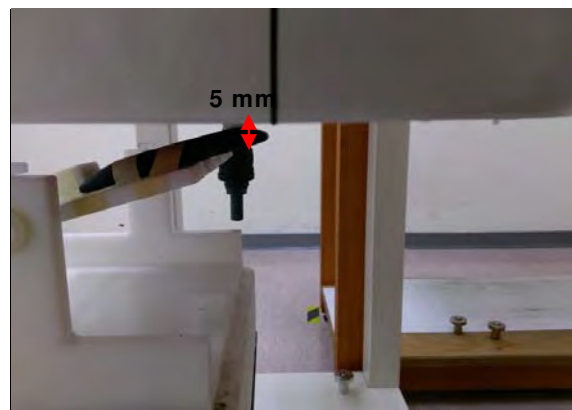


Fig.5 EUT Back side_curve to flat phantom



Body - distance between flat phantom and EUT is 5 mm



Fig.6 EUT Front side to flat phantom

11. Photographs of the EUT



Fig.7 Front view of EUT



Fig.8 Back view of EUT

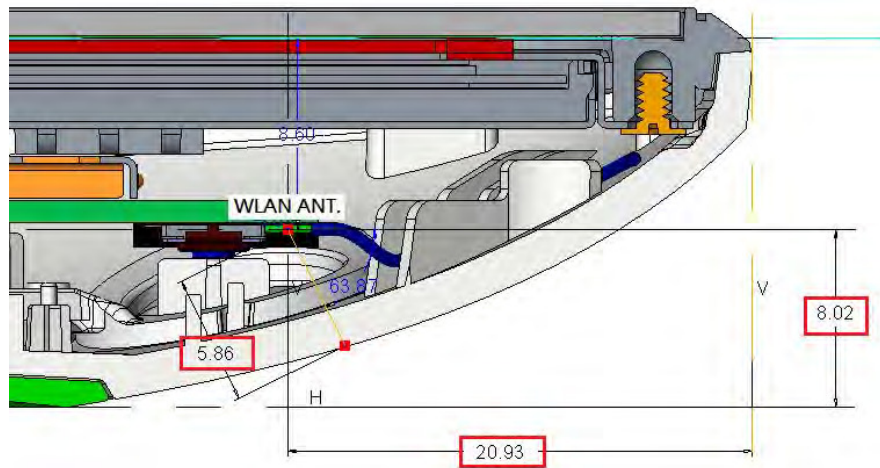


Fig.9 Cross section view

Front view

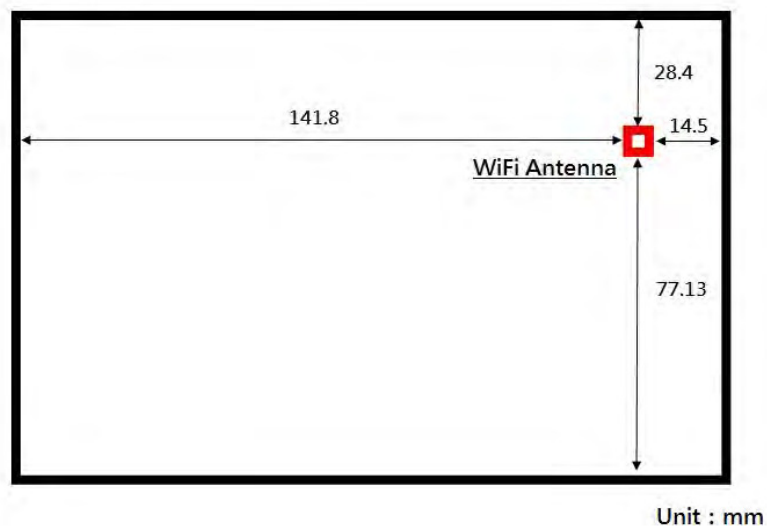


Fig.10 Antenna location (front view)

- End of Report -