

Telegesis (UK) Limited		Labelling Specification	1
ZigBee Modules		sETRX357-LRS Series	r5

1. Possible Variants and Order Codes

Order Code	Description
sETRX357-LRS	Power amplified module based on EM357 with on board antenna
sETRX357HR-LRS	Power amplified module based on EM357 with U.FL connector
sETRX357AP-LRS	Power amplified module based on EM357 with antenna pad
sETRX357-LRS8	Power amplified module based on EM357 with on board antenna + 8Mbit flash
sETRX357HR-LRS8	Power amplified module based on EM357 with U.FL connector + 8Mbit flash
sETRX357AP-LRS ¹	Power amplified module based on EM357 with antenna pad + 8Mbit flash

In addition to devices based on the EM357 future modules based on the Ember EM358x variants are also possible. For this the "357" in the product name will be replaced by one of the following: 3581, 3582, 3585, 3586, 3587, 3588.

¹ Not applicable for modular transmitter approval because „AP“ variants require the Rf output to be router on the customer's board

Telegesis (UK) Limited		Labelling Specification	2
ZigBee Modules		sETRX357-LRS Series	r5

2. Labelling



The label dimensions are 9.5mm x 9.5mm. The label is suitable for reflow soldering. The font used should be Gill Sans MT for all text, except for the “telegesis” name, which should be displayed using Gill Sans Light MT.

Imprint	Description
sETRX357HR-LRS	Module Order Code as per section 1.1 above.
000D6F0012345678	64-bit Serial Number of the module (can be extended to be the EU164 later)
E2	Production Date Code in the format described in section 2 below
01	Revision Number
02	Indication for batch number Starting at 00 for beta panel, 01 for pilot run, etc...
2D-Barcode	Information in the 2D-Barcode are the serial number [16 characters], the Part-Order code [max 16 characters], revision number [2 characters], identifier for the batch number [2 characters], and the production date code [2 characters], all separated by a semicolon.

Telegesis (UK) Limited		Labelling Specification	3
ZigBee Modules		sETRX357-LRS Series	r5

2.1 Label Position

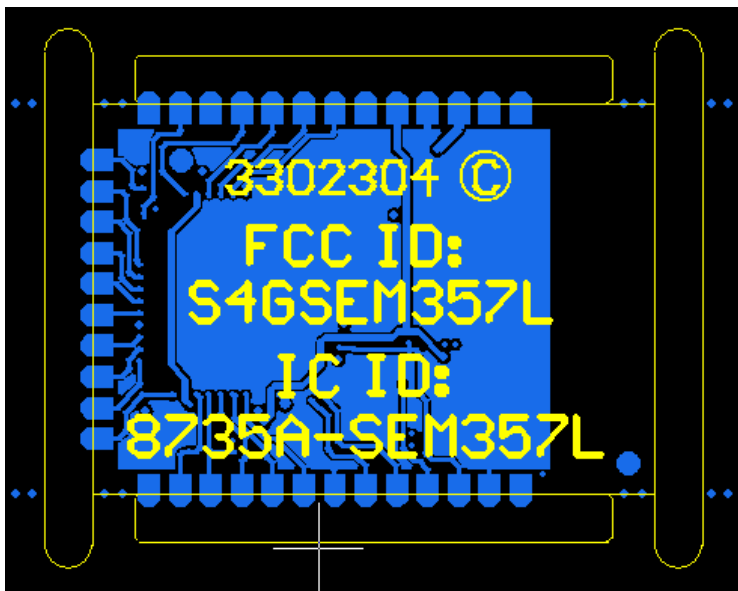
The label is affixed to the module as shown in the figure below



In the future it is planned to engrave or print the label's information directly onto the shielding can of the module. This will not affect the layout or contents of the label.

2.2 FCC and IC codes

Due to the very limited space on the label IDs showing regulatory compliance will be included in the bottom silk screen of the module as indicated in the drawing below



Telegesis (UK) Limited		Labelling Specification	4
ZigBee Modules		sETRX357-LRS Series	r5

Appendix 1

The date code shown on the label is set up as follows:

Year 1st / Month 2nd char.

C8	01.08.2012
C9	01.09.2012
CO	01.10.2012
CN	01.11.2012
CD	01.12.2012
D1	01.01.2013
D2	01.02.2013
D3	01.03.2013
D4	01.04.2013
D5	01.05.2013
D6	01.06.2013
D7	01.07.2013
D8	01.08.2013
D9	01.09.2013
DO	01.10.2013
DN	01.11.2013
DD	01.12.2013
E1	01.01.2014

Telegesis (UK) Limited		Labelling Specification	5
ZigBee Modules		sETRX357-LRS Series	r5

E2	01.02.2014
E3	01.03.2014
E4	01.04.2014
E5	01.05.2014
E6	01.06.2014
E7	01.07.2014
E8	01.08.2014
E9	01.09.2014
EO	01.10.2014
EN	01.11.2014
ED	01.12.2014
F1	01.01.2015
F2	01.02.2015
F3	01.03.2015
F4	01.04.2015
F5	01.05.2015
F6	01.06.2015
F7	01.07.2015