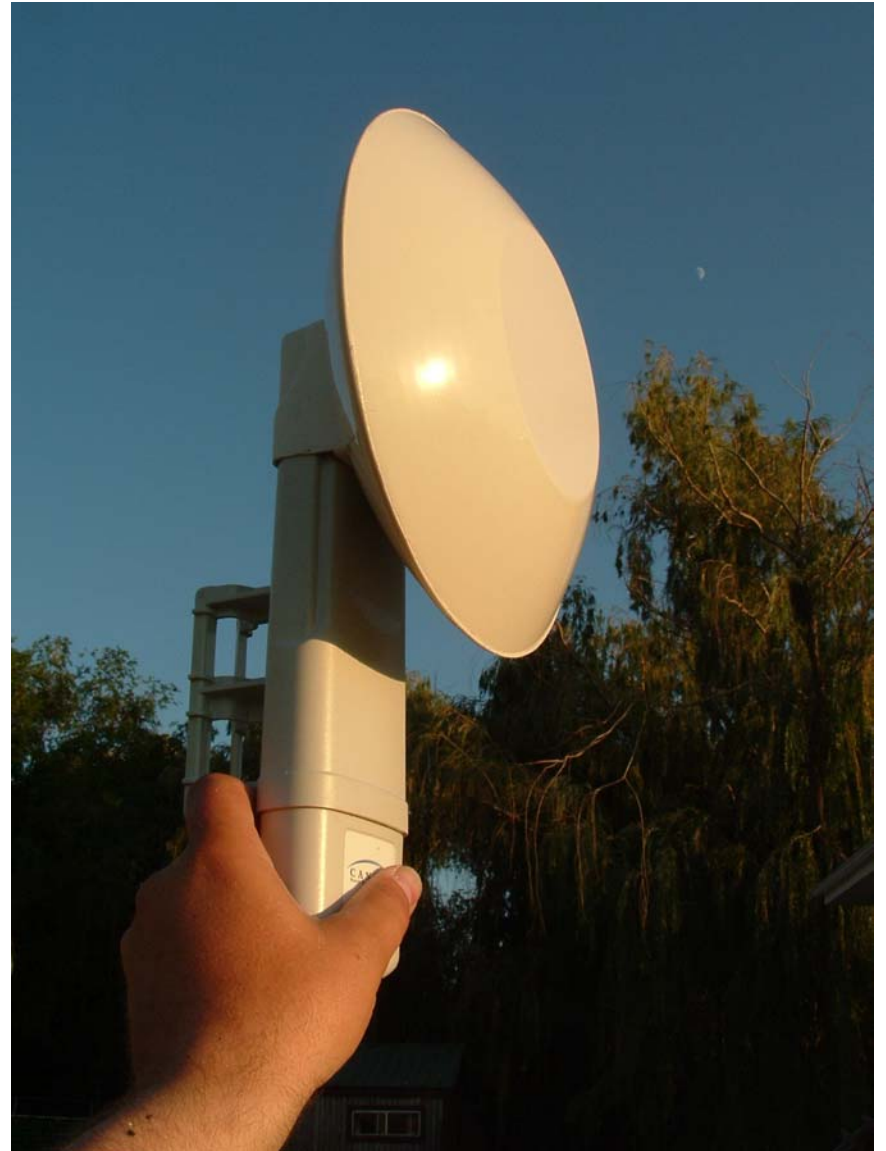


|                 |                                     |                  |             |
|-----------------|-------------------------------------|------------------|-------------|
| Polarity        | Vertical                            | Cross Pol Reject | >30 dB      |
| Gain            | 10-12 dB nom increase over bare SM  | Weight:          | 10 oz (nom) |
|                 | 17-19 dBi total antenna system gain | Wind Loading     |             |
| Beamwidth (3dB) | 12 degrees                          |                  |             |
| F/B Ratio       | >30 dB                              |                  |             |



**Figure 1 Antenna mounted**

