
 © 2005 PCTEST Lab.	ENCORENETWORKS FCC ID: S48EN1226 CDMA Wireless Modem	EUT Photographs Model: MDM100-1
---	---	------------------------------------





	ENCORE!NETWORKS FCC ID: S48EN1226	EUT Photographs
© 2005 PCTEST Lab.	CDMA Wireless Modem	Model: MDM100-1

# encore!networks

45472 Holiday Drive, Suite 3  
Dulles, VA 20166  
(703) 318-7750

**Model:** B1000-EN-21110-FN

**Date:** 1/27/03



**S/N:** 31NJ0012

**S/W:** 15459.0170



**FCC ID:** S48EN1226

FCC

This device complies with Part 15 of the FCC Rules.

Operation is subject to the following two conditions:

- (1) this device may not cause harmful interference, and
- (2) this device must accept an interference received, including interference that may cause undesired operation.


This device complies with Part 68 of FCC Rules.



Power Input: +5VDC  
.75A

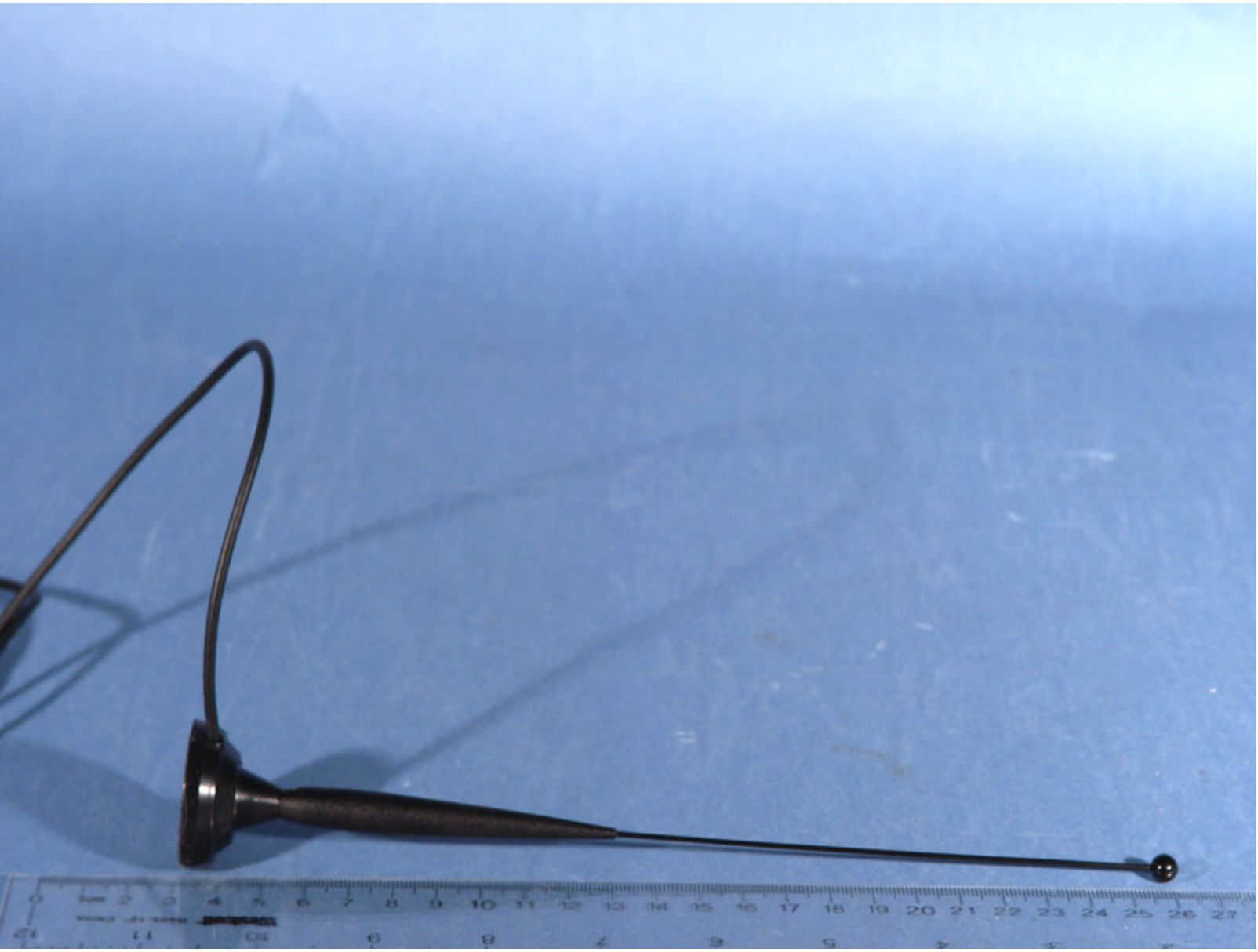
Made in Canada



 © 2005 PCTEST Lab.	ENCORE!NETWORKS FCC ID: S48EN1226 CDMA Wireless Modem	EUT Photographs Model: MDM100-1
---	--	------------------------------------



 <b>PCTEST</b> Professional Calibration, Test, and Repair Laboratory	ENCORE!NETWORKS FCC ID: S48EN1226	EUT Photographs
© 2005 PCTEST Lab.	CDMA Wireless Modem	Model: MDM100-1



**PCTEST™**  
Professional Cellular Testing  
Wireless Forensic Lab

© 2005 PCTEST Lab.

ENCORE!NETWORKS FCC ID: S48EN1226

CDMA Wireless Modem


EUT Photographs

Model: MDM100-1





**ELPAC POWER SYSTEMS**  
MODEL: FW1805 - 3471  
INPUT: 100 - 240VAC  
47 - 63Hz 0.5A  
EINGANG  
OUTPUT: 5VDC, 3.0A  
AUSGANG 15W MAX  
LPS POWER SUPPLY  
E150854  
CE  
UL LISTED  
E150854  
8M28  
FCC  
REV. D MADE IN CHINA  
05/04 SERIAL NO: 001174

 PCTEST Professional Calibration, Verification & Testing Lab	ENCORE! NETWORKS FCC ID: S48EN1226	EUT Photographs
© 2005 PCTEST Lab.	CDMA Wireless Modem	Model: MDM100-1