

MC3000 User's Guide



Preliminary Version

January 2005

InnoTeletek, Inc.



FCC RF EXPOSURE INFORMATION

WARNING! Read this information before using your phone

In August 1996 the Federal Communications Commission (FCC) of the United States with its action in Report and Order FCC 96-326 adopted an updated safety standard for human exposure to radio frequency (RF) electromagnetic energy emitted by FCC regulated transmitters. Those guidelines are consistent with the safety standard previously set by both U.S. and international standards bodies. The design of this phone complies with the FCC guidelines and these international standards.



Use only the supplied or an approved antenna. Unauthorized antennas, modifications, or attachments could impair call quality, damage the phone, or result in violation of FCC regulations.

Do not use the phone with a damaged antenna. If a damaged antenna comes into contact with the skin, a minor burn may result. Please contact your local dealer for replacement antenna.

Body-worn Operation

This device was tested for typical body-worn operations with the back of the phone kept 0.59 inches (1.5 cm) from the body. To comply with FCC RF exposure requirements, a minimum separation distance of 0.59 inches (1.5 cm) must be maintained between the user's body and the back of the phone, including the antenna, whether extended or retracted. Third-party belt-clips, holsters and similar accessories should not contain metallic components and must provide 0.59 inch (1.5 cm) separation distance between the user's body and the back of the phone. Body-worn accessories that do not meet these requirements may not comply with FCC RF exposure limits and should be avoided.

For more information about RF exposure, please visit the FCC website at www.fcc.gov

FCC Notice

This device complies with part 15 of the FCC rules. Operation is subject to the following two conditions: (1) This devices may not cause harmful interference, and (2) This device must accept any interference received, including interference that may cause undesired operation.

This equipment has been tested and found to comply with the limits for a Class B digital device, pursuant to part15 and Part22 of the FCC Rules. These limits are designed to provide reasonable protection against harmful interference in a residential installation. This equipment generate, uses and can radiate radio frequency energy and, if not installed and used in accordance with the instructions, may cause harmful interference to radio communications. However, there is no guarantee that interference will not occur in a particular installation. If this equipment does cause harmful interference to radio or television reception, which can be determined by turning the equipment off and on, the user is encouraged to try to correct the interference by one or more of the following measures:

- Reorient or relocate the receiving antenna.
- Increase the separation between the equipment and receiver.
- Connect the equipment into an outlet on a circuit different from that to which the receiver is connected.
- Consult the dealer or an experienced radio/TV technician for help.

Any changes or modifications to the equipment not expressly approved by the party responsible for compliance could void user's authority to operate the equipment.

Contents

Notice	5
Chapter 1. Parts of the Terminal	8
Chapter 2. Getting Started	9
Charging the Battery.....	9
Turning on/off the Terminal.....	10
Chapter 3. Adjusting Settings	13
Sleep Mode.....	13
LCD Display.....	13
Volume & Sounds.....	13
Date/Time.....	13
Chapter 4. Operating the Terminal	14
Using the Stylus.....	14
Calibrating the Screen.....	14
Resetting your Terminal.....	15
Performing a Soft Reset.....	15
Performing a Hard Reset.....	16
Chapter 5. Applications	17
Making Document.....	17
Barcode Scanning	20
Connecting with the Desktop Computer.....	23
Wireless LAN(Optional)	27
Chapter 6. Troubleshooting	30
Troubleshooting.....	30
Chapter 7. Technical Specifications	32
Physical Characteristic	32
Performance Characteristics	32
Service Information	33
Limited Warranty Statement	34

Notice

1. Limited Warranty

InnoTeletek will repair the defective parts free of charge if the problem is due to materials or workmanship during the warranty period. The warranty period for this product is one year from the date of product purchase. Provided that the date of purchase is not clear, it is six months from the date of manufacture. The warranty period for the battery is six months from the date of product purchase. Provided that the date of purchase is not clear, it is three months from the date of manufacture.

However, InnoTeletek does not service free of charge in case of noted below even during the warranty period. Any damages or defectives: (1) as a result of accident, misuse, abuse, or other external causes; (2) by the reason of flood, typhoon, fire, war or other Acts of God; (3) by the user's arbitrary modification or conversion; (4) by any other reasons beyond defects of materials or workmanship.

2. Copyright

This manual describes and explains the product on the basis of the time of present. INNOTELETEK IS NOT LIABLE FOR ANY LOST PROFITS CAUSED BY UNEXPECTED RESULTS CONCERNED WITH OMISSIONS AND THE EDITING OF THIS MANUAL. THE MATERIAL IN THIS MANUAL IS SUBJECT TO CHANGE TO IMPROVE RELIABILITY, FUNCION, OR DESIGN WITHOUT NOTICE. The law protects all programs and the rights. Without the permission from InnoTeletek, no right to copy, quote or translate this manual in whole or in part is granted except as permitted under copyright law.

Other product names mentioned in this manual such as Microsoft ActiveSync®, Windows® and its logo are registered trademarks of their companies. InnoTeletek is permitted to use those Microsoft products by an affiliate of Microsoft, Microsoft Licensing, Inc.

All software furnished to the user is on a licensed basis, and it is not sold. InnoTeletek has the rights of all software, and it grants to the user a license to use the software. The rights of software are granted to the user under the agreement to comply with the terms on the license agreement. Such license should not be sublicensed, distributed or transferred to other persons by the user.

InnoTeletek License Agreement applies to all software provided by InnoTeletek. Microsoft programs are granted to use by its End User License Agreement (EULA).

The user shall not modify or merge any form of a licensed program with other programs, or use it in a network without prior consent of InnoTeletek.

No right to copy a licensed program in whole or in part is granted except as permitted under copyright law.

InnoTeletek may terminate the contract in the breach of contract by the user.

3. Precautions

- A. Use this product at a proper voltage. Otherwise, this product may be damaged or cause a fire.
- B. Do not dismantle or modify this product arbitrarily. It may cause malfunction or damage, and the warranty does not apply to these cases.
- C. Do not use this product in dusty and humid places. It may weaken the function or cause malfunction of the product.
- D. When using the product, keep it away from a magnetic product or a large size speaker. Otherwise, it may erase data stored in the terminal's memory or cause damage to the LCD.
- E. Be careful not to expose your eyes to the laser beam while scanning. It is harmful for your eyes.
- F. Optional CDMA embedded products have their own Electronic Serial Numbers (ESN) in the built-in CDMA Module. Do not copy or modify ESN illegally. Otherwise, a legal restraint will be taken.

4. For a trouble-free use, observe the following tips when using your terminal

- A. Your terminal is designed to operate between -20 ~ 60 . Therefore protect your terminal from temperature extremes. Do not leave it on the dashboard of a car on a hot day, and keep it away from heat sources. Otherwise, it may cause malfunction, or data stored in your terminal may be lost.
- B. The terminal is so durably made as to run through the 1.5m dropping test. However this is only for circumstances beyond control. The touch-sensitive screen of your terminal is made of glass. Be careful not to drop your terminal or subject it to strong impact. Otherwise, it may be broken.
- C. Although your terminal is water resistant, do not expose it to rain or moisture for an extended period of time. Avoid using the terminal when it rains heavily. Wipe

the water on the terminal with a soft cloth when it is moist before using. Otherwise, it may cause malfunction.

- D. Do not scratch the screen. Use only the supplied stylus pen intended for use with a touch-sensitive screen. Never use a pen or pencil or other sharp object on the screen, and clean the screen with a soft cloth when it is dusty. Otherwise, it may cause damage to the touch-sensitive screen.
- E. Do not use your terminal in any location that is close to other electronic goods. Radio waves of other electronic goods may disturb your using the terminal. Also do not store or use your terminal in any location that is extremely dusty, damp or wet.

5. In Boxes

If intended, two gift boxes contain including subunits, the terminal and single slot cradle. Carefully remove all protective material from the terminal and the cradle, and save the shipping containers for later storage and shipping for repair or return. Verify that you received all equipment listed below.

The terminal box contains:

- TERMINAL: 1
- LITHIUM-ION BATTERY: 1
- HANDSTRAP: 1*
- TERMINAL CASE: 1*
- STYLUS: 1*
- MC3000 USER'S GUIDE: 1

The cradle box contains (optional):

- ONE-SLOT CRADLE: 1
- USB SYNCH CABLE: 1
- ADAPTER: 1
- POWER CORD: 1

* In plastic bag

If you are missing any equipment or find any damaged equipment, call the local agent or distributor immediately. If your problem cannot be solved over the phone, you may need to return your equipment to the local agent or distributor. However, InnoTeletek is not liable for any damages incurred during shipment if the shipping container is not used. See "Service Information" on page 33.

Chapter 1. Parts of the Terminal



- (1) Indicator Lamp (LED)
- (2) Antenna (For W-WAN use)
- (3) IrDA port
- (4) Speaker
- (5) Scan Trigger
- (6) 4way direction Key
- (7) Power Button
- (8) Send & End Key for WWAN.
- (9) Numeric Key Pad (Alphabet and Hangul can be applied)
- (10) Keypad Backlit button
- (11) Function Key
- (12) Universal I/O connector

Chapter 2. Getting Started

1. Charging the Battery

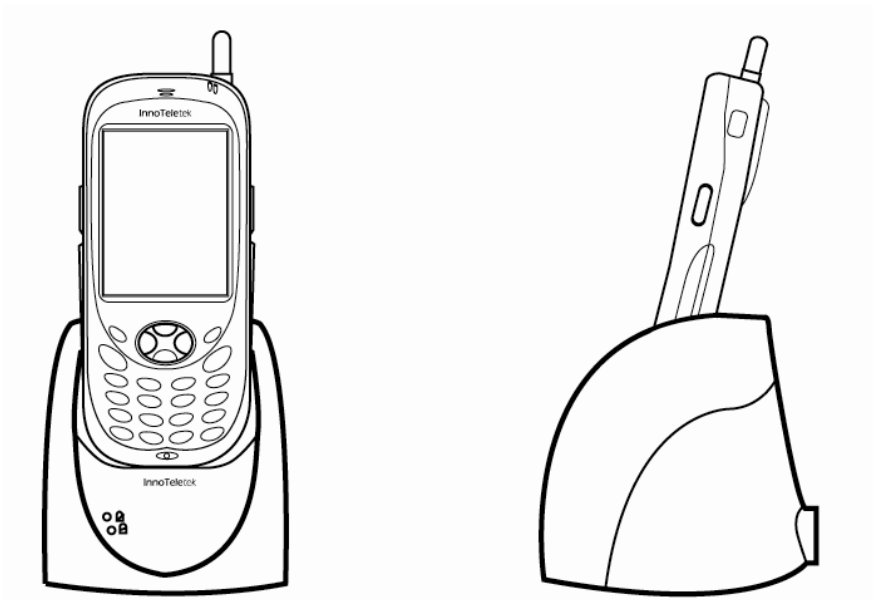
Before using the terminal for the first time, charge the Li-ion Battery fully in the terminal until the battery charging LED turns **GREEN**. It may take approximately 3 hours. Place your terminal into the cradle and charge it.

Note: *When you first use your terminal, if you remove your battery before it is fully charged, it may cause malfunction. To ensure the quickest charging time, turn the terminal into a sleep mode while charging.*

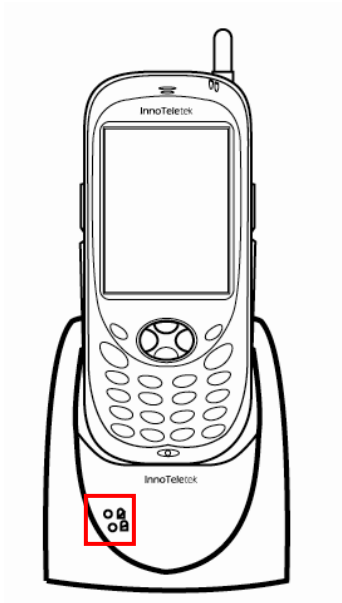
To charge the terminal's battery:

Connect the cradle to a power source.

Slide in the terminal into the cradle until red LED lights up. For spare battery charging, stick the battery to charging slot at the top of cradle. The terminal starts to charge automatically, and fully charges in approximately 3 hours.



The battery charging LED turns **RED** to indicate that the battery is charging. As charging is completed, LED turns **GREEN**.



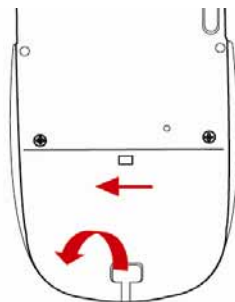
Note: Your terminal is equipped with a memory backup battery. This backup battery retains data in memory when the terminal's battery is removed. If the terminal leaves without the battery in more than 1 hour, the backup battery consumes. It is preferable to exchange a used up battery with a fully charged battery within 10 minutes or charge the battery with the terminal in the cradle. Otherwise data may be lost.

2. Turning on/off Terminal

1) If you're using the terminal for the first time

Pulling out the RUBBER latch of the Battery cover.

Slide left the Battery cover to open it.

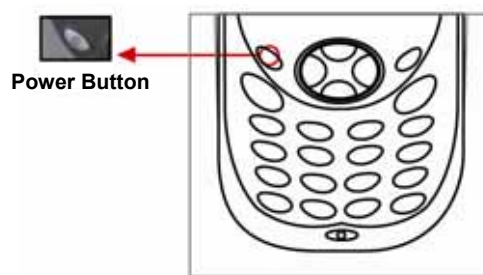


Insert a battery in the battery compartment with the battery tether positioned. Ensure that the top of the battery snaps into the place first, and then the bottom. When closing the battery compartment, slide right the Battery cover and hook the RUBBOR into the hole.

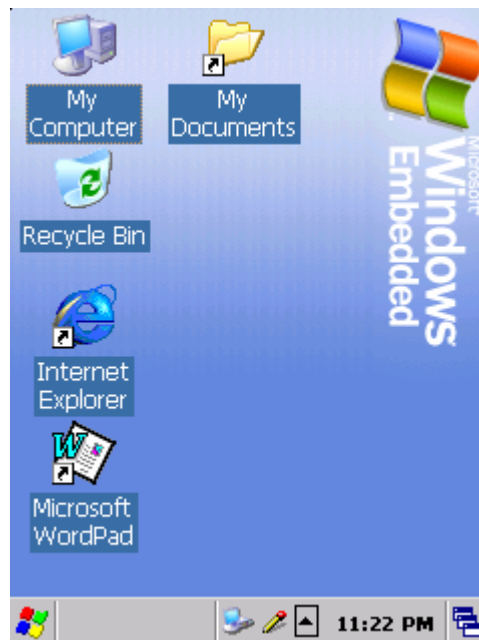
2) When you're using the power button to turn the terminal on

Press the **Power** button to turn the terminal on.

- If you press and hold the **Power** button for about 3 seconds, it goes to a sleep mode, turned off.



As the booting process proceeds, Windows® logo comes up.



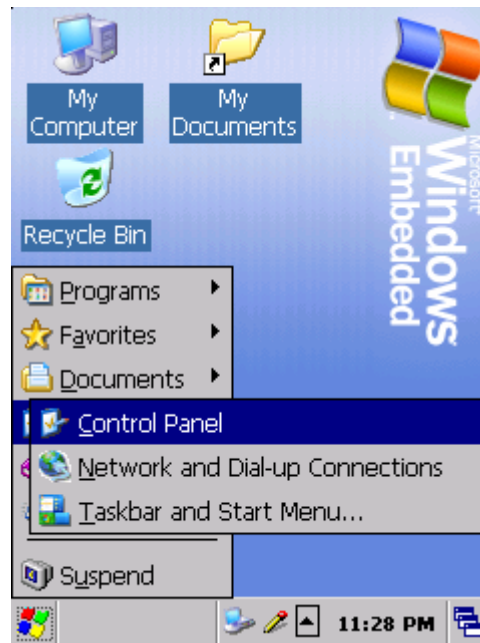
If the power doesn't come on, perform a hard reset. See "Performing a Hard Reset" .

2) Turning off Terminal

Press and hold the **Power** button for about 3 seconds or tap **Suspend** on the start menu.

- You can also set your terminal to auto-suspend or to turn it off after a certain time period. It allows you to save the battery power.

- Method of adjusting power: Tap **Start** **Settings** **Control Panel**. Double tap the **Power** button and select **Schemes**.



Separate the battery from the terminal when not in use for a long time.

Chapter 3. Adjusting Settings

1. Sleep Mode

1) For low power consumption, push the **Power** button for about 3 seconds or tap **Start Suspend**, and your terminal will turn into a sleep mode. Data stored in RAM still remains even after you perform a sleep mode.

2) To wake up from a sleep mode, push the **Power** button. When the terminal wakes up from a sleep mode, the Windows will show you the same view, as it before a sleep mode

2. LCD Display

To save battery power you'd better change the backlight settings.

1) Tap **Start Settings Control Panel**, then Double tap **Display**.

2) Select **Backlight** and make desired selection.

3. Volume & Sounds

To change alarms and the volume of your key clicks etc., tap **Start Settings Control Panel**, then double tap **Volume & Sounds**.

4. Date/Time

To adjust the date and time, select **Start Settings Control Panel**, then double tap **Date/Time**.

Chapter 4. Operating the Terminal

1. Using the Stylus

The stylus selects items and enters information. The stylus functions as a mouse.

- 1) Tap: Touch the screen once with the stylus to open items and select options.
- 2) Drag: Hold the stylus on the screen and drag across the screen to select text and images.
Drag in a list to select multiple items.

Note: 1. If the surface of the screen becomes soiled, clean it with a soft cloth before using the stylus pen.

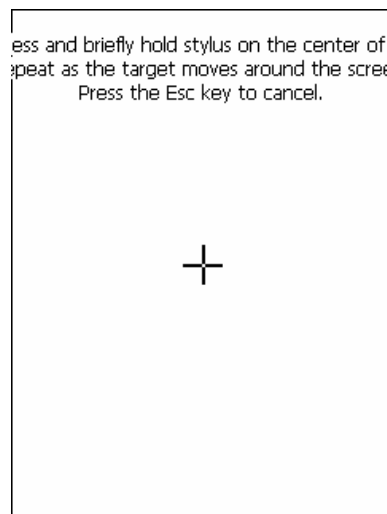
2. Take care not to scratch the screen. When working with your MC3000, use the supplied pen intended for use with a touch-sensitive screen. Never use an actual pen or pencil or other sharp object on the surface of the MC3000 screen.

3. Do not leave a child playing with stylus. Body contact with the sharp end could incur severe injury. Please keep the terminal away from child at all times.

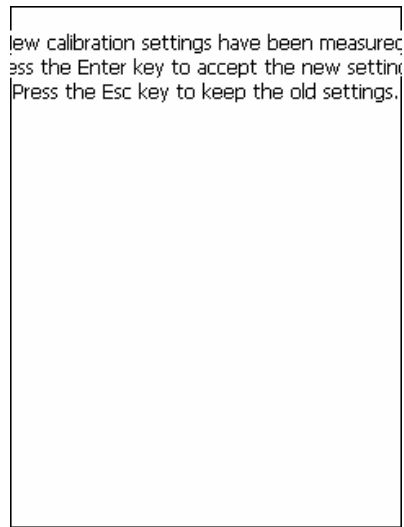
2. Calibrating the Screen

When tapping with the stylus pen does not activate correctly, calibrate the screen. To calibrate the screen so the cursor on the touch screen aligns with the tip of your stylus:

- 1) To calibrate your screen, select **Start Settings Control Panel**, then double tap the **Stylus** icon.
- 2) Remove the stylus from its stylus silo on the back of the terminal.
- 3) Tap the center of each target that appears on the calibration screen with stylus.



< Picture 3-1. Calibration screen >



< Picture 3-2. Calibration Settings is completed >

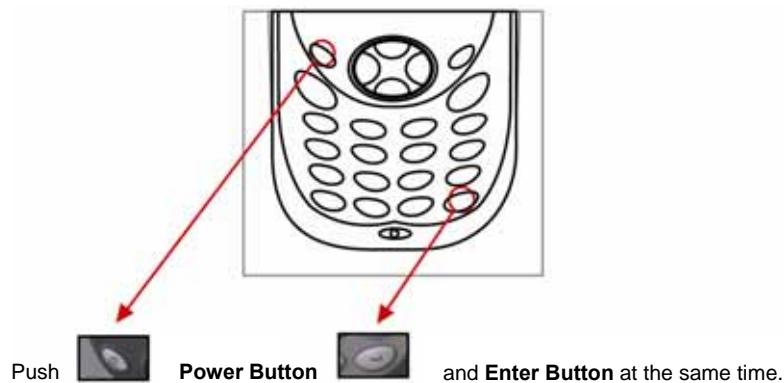
3. Resetting Your Terminal

If the screen freezes or the terminal becomes inoperative, you may reset the terminal.

1) Performing a Soft Reset

Note: *Move all stored data into a computer. Otherwise files that remain open during a soft reset may not be retained.*

To perform a soft reset, push both of the **Power** and **Enter** button.

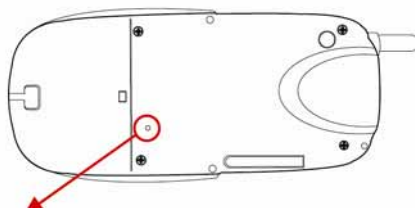


Note: *A soft reset restarts the terminal and saves all stored records and entries.*

2) Performing a Hard Reset

With a hard reset, formats, preferences, date and time, and other settings are restored to their factory default settings.

To perform a hard reset, push **Reset button** located in right upper side of the Battery Cover.



Push the Reset Button in the hole using the stylus pen.

Note: A hard reset also restarts your terminal, but erases all stored records and entries in RAM.

Therefore, never perform a hard reset unless a soft reset does not solve your problem.

! BE CAREFUL WHEN YOU PERFORM A HARD RESET SEVERAL TIMES CONSECUTIVELY, IT MAY CAUSE SCREEN TO GO BLANK FOLLOWED BY VERTICAL LINES ON THE SCREEN.

Chapter 5. Applications

1. Making documents

You can make a new document on your terminal with Microsoft WordPad®¹, or work on a pre-existing document by copying it from the desktop computer to your terminal. Information between terminal and computer can be up- or downloaded through ActiveSync® software.

There are the following two ways to enter characters on the document using document-editing programs.

- By using the keyboard.
- By using a handwriting recognition program (*Jipilmook*®)

The method for making documents with each of the methods is as follows.

1) Using the keyboard

Using the shortcut icon in the **Start** menu or background screen, execute **Microsoft WordPad**®, the document-editing program.

The Pictures below show how to use background screen shortcut icons. Double tap Microsoft WordPad® (Picture 4-1), and the initial screen of Microsoft WordPad® will appear (Picture 4-2).




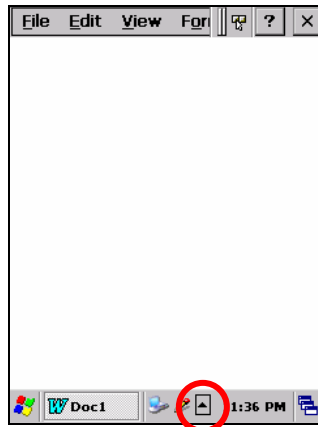
< Picture 4-1 >



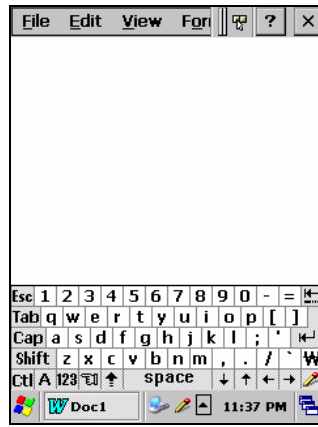
< Picture 4-2 >

¹ Microsoft WordPad® is a registered trademark of Microsoft.

Tap  on the bottom of the screen, with the stylus pen (Picture 4-3). Then the drop-down menu with <Jipilmook®, Keyboard> will appear. Select **Keyboard** herein (Picture4-4).



< Picture 4-3 >




< Picture 4-4 >

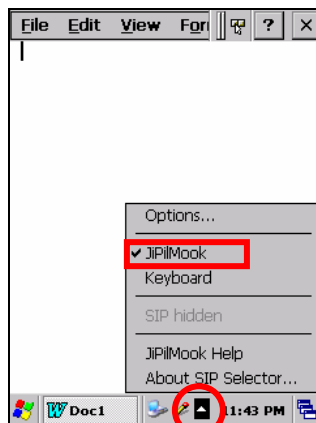
When a keyboard screen appears on the lower portion of the screen, tap the keys with your stylus.

Note: You can also use the keyboard on the front of the terminal. The keyboard uses a numeric keypad that produces the numbers (0~9). The keypad is color-coded to indicate particular actions that are produced when the **Shift** key is pressed.

2) Using the character recognition program (Jipilmook®)

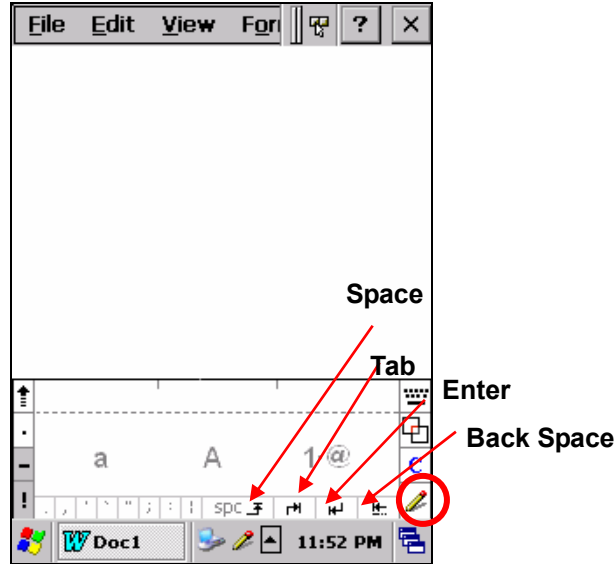
Execute Microsoft WordPad®, the document-editing program.

Tap  on the bottom of the screen with the stylus. Then the drop-down menu that shows the <Jipilmook, Keyboard> options will appear. Select Jipilmook®.






< Picture 4-5 >

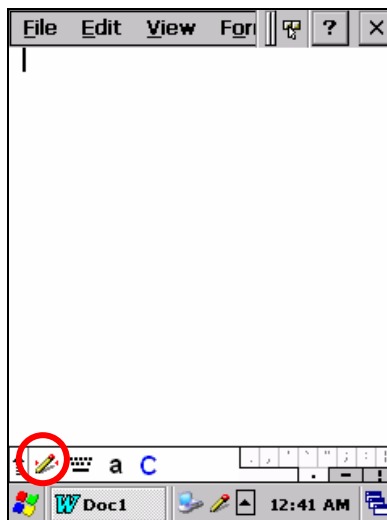
Select **Jipilmook®**. A window with the <a, A, 1·@> options appears on the lower portion of the screen. Small letters, capital letters and numbers/symbols should be written on the “a”, “A” and “1·@” -marked portion respectively.




< Picture 4-6. Box Screen Recognition Mode >

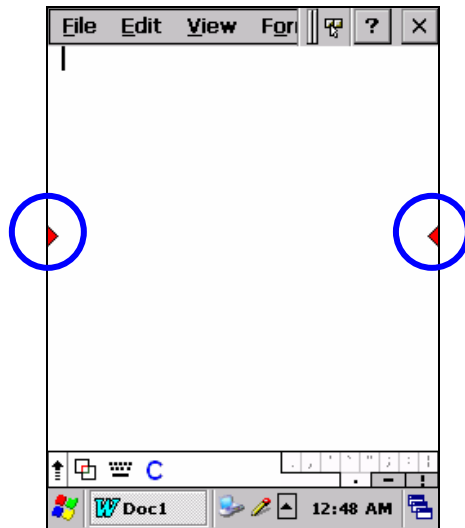
-  Input Mode Conversion
-  Ctrl: A shortcut key applied with “Ctrl + input character”. (e.g. writing **S** on the **Ctrl** window calls the save file dialogue by **Ctrl+S**.)

For the full screen mode for writing, tap the -shaped button on the right side circled in <Picture 4-6>. For example, if you write letters anywhere using your stylus in the full screen mode, the letters you write on the screen will be converted to text on the top portion of the screen.



< Picture 4-7. Full Screen Recognition Mode >

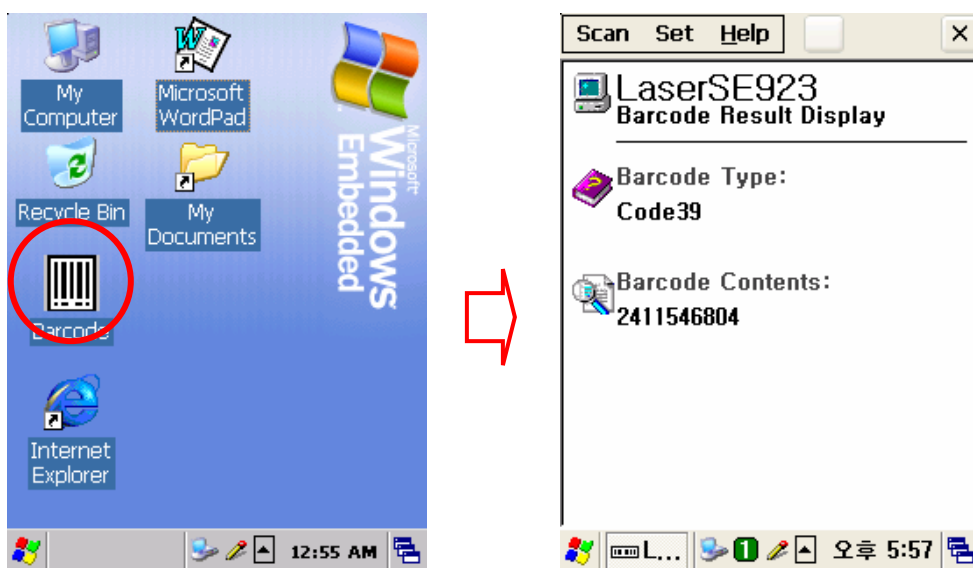
For the split screen mode for writing, tap the -shaped button on the bottom menu bar at the full screen mode. Above portion of the arrow circled in blue in the picture below is for capital letter-input space and the below portion of the arrow is for small letters-input space.



< Picture 4-8. Full Screen Recognition Mode >

2. Barcode Scanning (Demo Program)

- 1) Execute the barcode scanning program on the background screen.



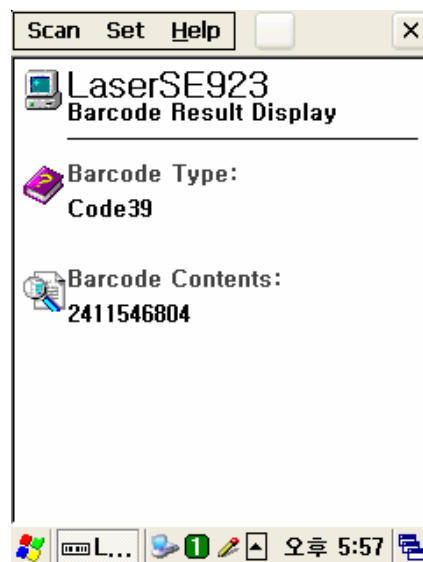
< Picture 4-9. Preparations for Barcode Scanning >

2) Place the terminal to the direction of a barcode and press one of trigger buttons. Let **RED** laser aimer line covers the barcode.

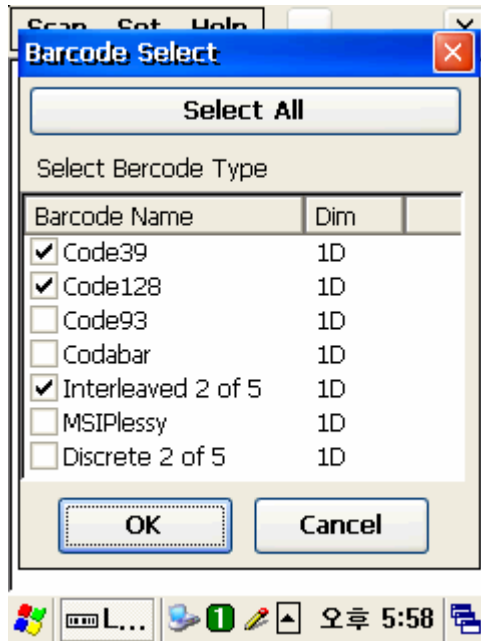
! DO NOT PRESS THE SCAN BUTTON TOO LONG; IT MAY RESULT IN FAILURE OR MISOPERATION.



3) A short beep indicates successful decoding. And the result appears in the scan window.



4) In order to accelerate decoding performance, you can enable or disable imaging by clicking Option menu. Using stylus, click Option at the menu bar and mark or unmark the **Enable Image**.



5) Readable codes

- **Linear Symbologies:** Codabar, Code 11, Code 128, Code 39, Code 93, EAN-8, EAN-13, Interleaved 2 of 5, ISBT 128, MSI, Reduced Space Symbology, Straight 2 of 5 IATA, UPC-A, UPC-E, UPC-E1

3. Connecting with the Desktop Computer

ActiveSync® is the software that allows to a user to move files, update messages and phone book, so on, between desktop and terminal. As you connect the terminal and desktop computer, by placing terminal to cradle, a little pop up window appears on your desktop and terminal, indicating the synchronization status.

1) Install ActiveSync® on the Desktop Computer.

Insert the ActiveSync CD in the CD-ROM, and an auto-installation screen appears. You can also download the latest version of the software from <http://www.microsoft.com>.

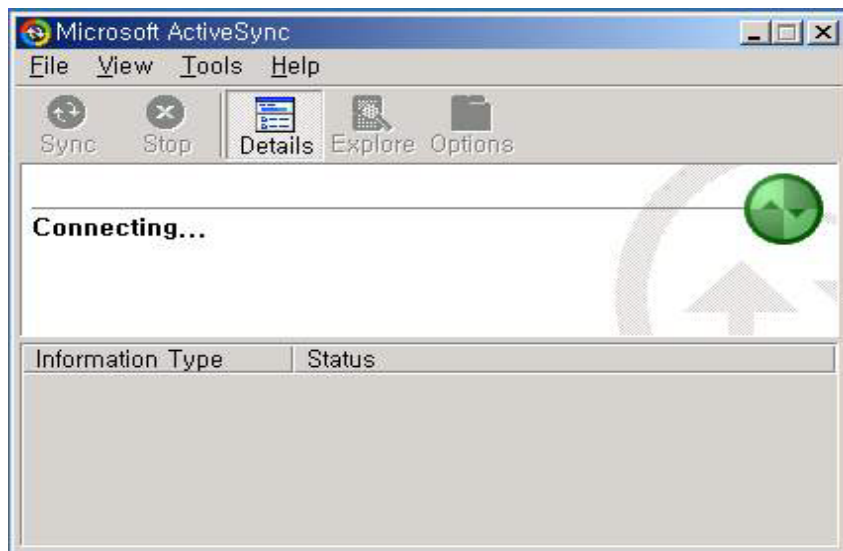


< Picture 4-12 >

If the auto installation screen does not appear, perform setup.exe in the CD.

2) Setting up a partnership.

Place your terminal on the cradle, which is connected to the desktop computer by a USB or RS232 cable, and a screen saying that the terminal is **connecting** will appear.



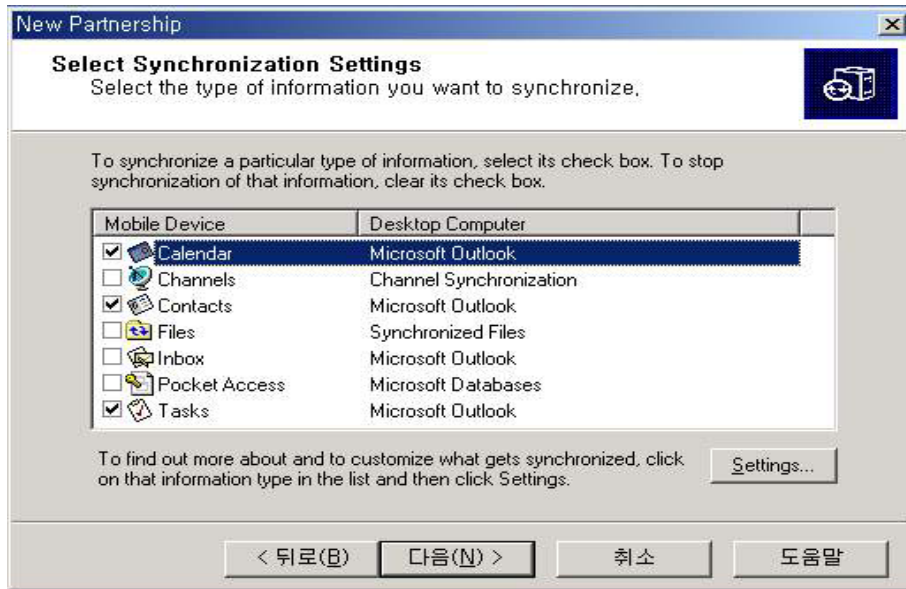
< Picture 4-13 >

The desktop computer and terminal will attempt to synchronize. The partnership window appears. Tap the **Yes** button and then select **Next**.



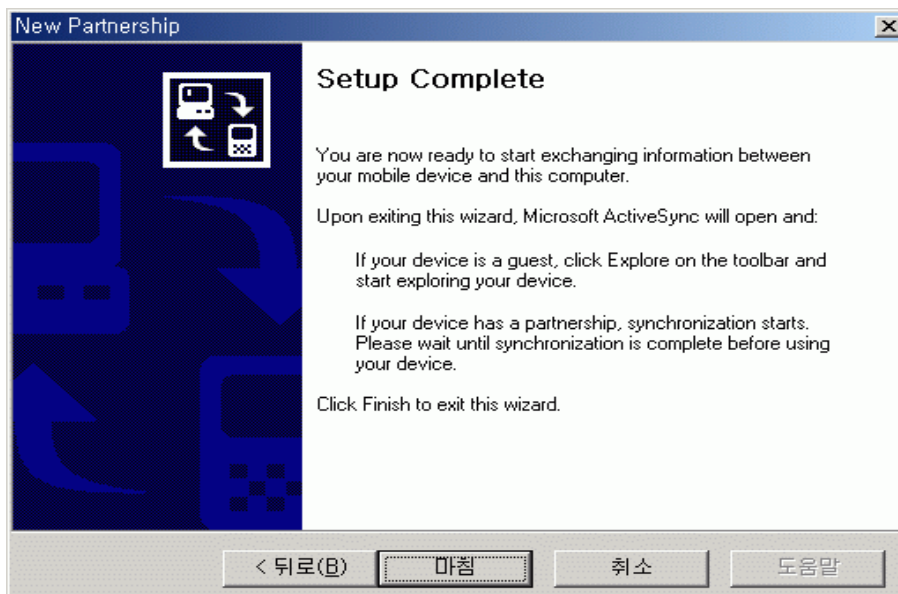
< Picture 4-14 >

The **Select Synchronization Settings** Window appears. Select the items you want to synchronize, then the **Next** button.



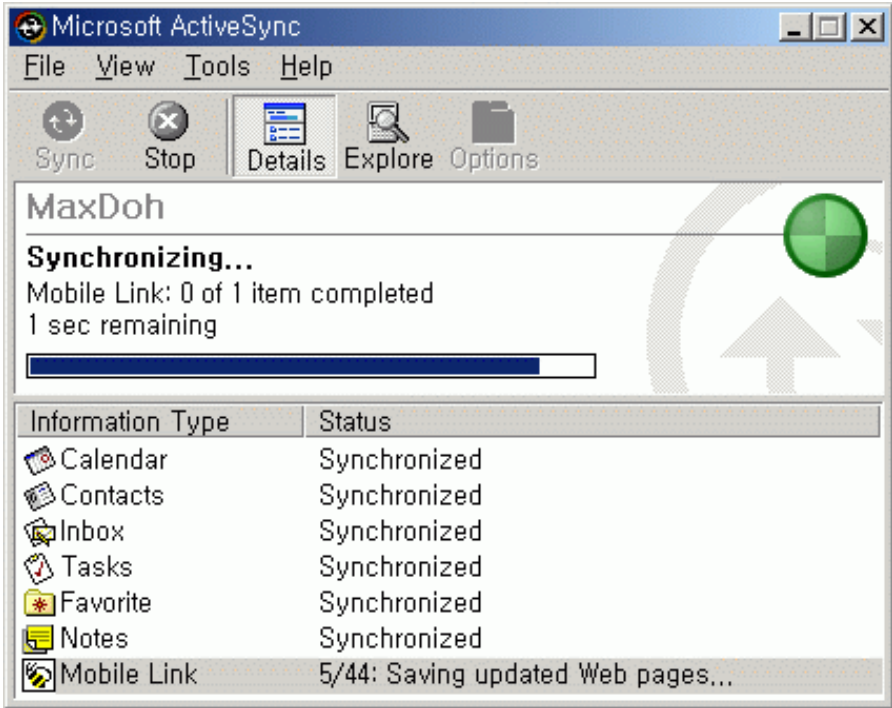
< Picture 4-15 >

Select the **Finish** button, then the basic settings for connecting the desktop computer and terminal are finished.



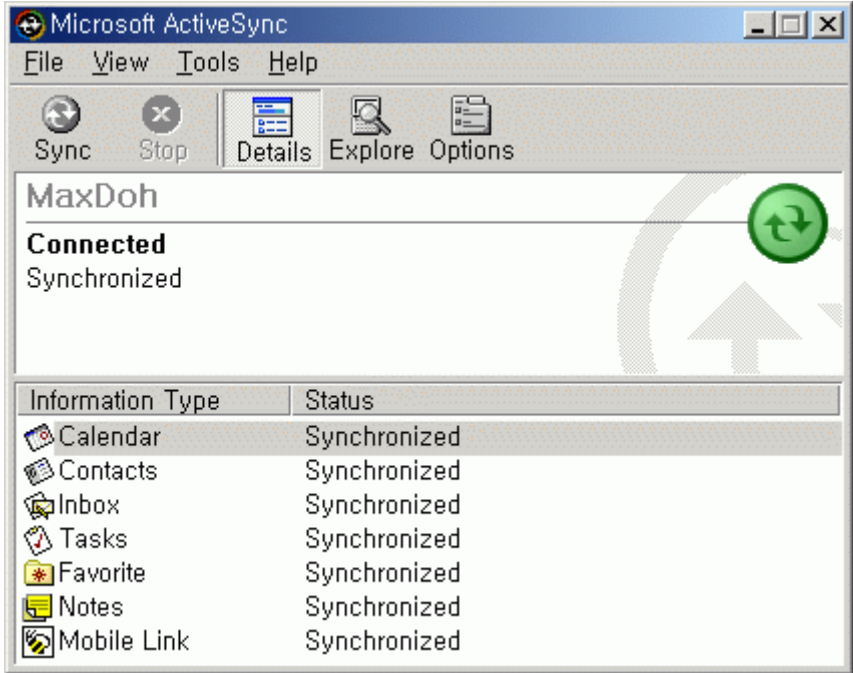
< Picture 4-16 >

Go through the steps above to run ActiveSync®.



< Picture 4-17 >

The screen shows that synchronization is finished



< Picture 4-18 >

Wireless LAN (Option)

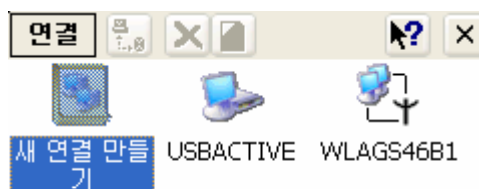
With a wireless LAN type model, you can log onto the internet wirelessly through internal WLAN card. Your terminal must be set up with the equipment required to run the wireless LAN including an Access Point, and the terminal must be properly configured.

Select **Start** → **Settings** → **Control Panel**, then double tap **Network and Dial-up Connections**.



< Picture 5-1 >

Select an appropriate driver for a built-in Wireless LAN card. For example, this unit is set up with USI.



< Picture 5-2 >

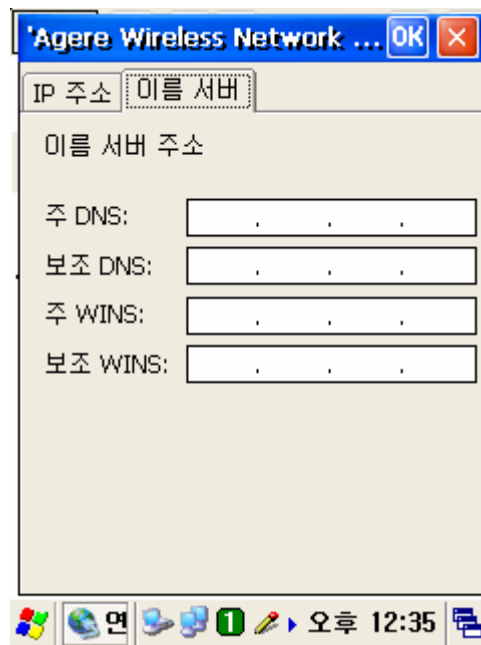
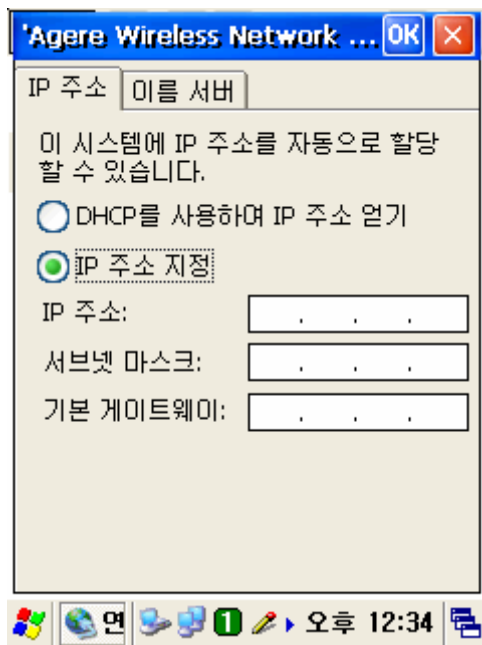
Note: An appropriate driver varies according to the kinds of the built-in wireless LAN card. So you must confirm it previously.


Dynamic IP

Select **Obtain an IP address via DHCP**. In this case, wireless communication is unavailable cause DHCP is not the static IP.

Static IP

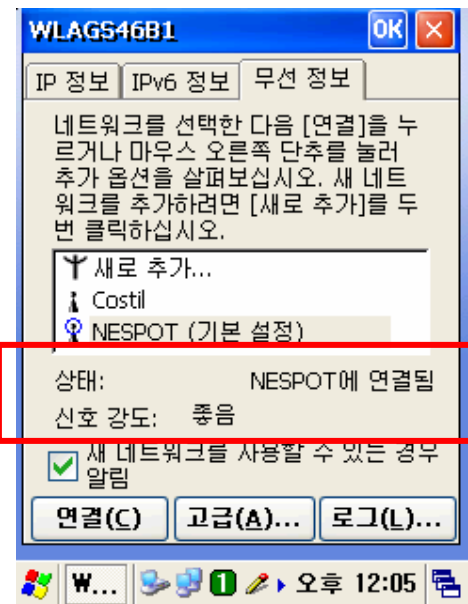
- i) Select **Start** → **Settings** → **Control Panel**, then double tap **Network and Dial-up Connections**.
- ii) Select an appropriate driver for a built-in Wireless LAN card. For example, this unit is set up with CISCO.
- iii) Select the **IP Address** tap, and then the **Specify an IP address** here. Enter the **IP Address, Subnet Mask** and **Default Gateway** data.
- iv) Select the **Name Servers** tap, and enter the appropriate data. Consult the network manager for the data.



- * To check the reception status, Select the icon shaped like  on the desk bar, then **Wireless Information** tap. The **Signal Strength** is indicated as **Very Good** or **Good** etc.



< Picture 5-5 >



< Picture 5-6 >

- v) Select the **IP Information** tap, and make sure that the static IP information has been entered.

Note: *The IP information is not deleted even though a soft reset is performed but should be entered again when a hard reset has been performed.*

Chapter 6. Troubleshooting

Problem	Cause	Solution
Terminal does not turn on.	<i>Battery not charged.</i>	Charge or replace the battery in the terminal.
	<i>LED turns on, but terminal is unable to boot.</i>	If reset rubber can be pushed with your finger, then cut the tip of the rubber.
	<i>Terminal is unable to boot, and lines appear on screen.</i>	Take away battery from battery compartment, and push the reset button. Then place the battery back into its compartment.
Terminal turns itself off.	<i>Terminal is inactive (Sleep Mode).</i>	Press the Power button, then the windows restores. Your terminal turns off after a period of inactivity. This period can be set on the Power Properties . Tap Start Settings → Control Panel Power .
Battery does not charge.	<i>Battery failed.</i>	Replace battery. If your terminal still does not operate, try a hard reset.
	<i>Terminal removed from cradle while battery was charging.</i>	Insert terminal into the cradle and begin charging. Be careful that your terminal must be turned off or in a sleep mode while charging.
	<i>I/O Connector isn't clean.</i>	Clean up the I/O connector.
Cannot see characters on display.	<i>Terminal not powered on.</i>	Press the Power button.
	<i>Battery not charged.</i>	Charge the battery.
Fail to communicate with IrDA printer.	<i>IP error</i>	Adjust the static IP address.
	<i>IP crash</i>	Check whether more than two people use the static IP address.
Tapping with the Stylus pen doesn't activate correctly.	<i>Tapping icons does not activate the corresponding feature.</i>	Select Start → Settings → Control Panel , and double tap Stylus . Adjust the stylus pen.
A message appears stating that your terminal's memory is full.	<i>Too many files stored in the terminal.</i>	Delete unused files and save records on your computer.
	<i>Memory setting problem.</i>	Adjust the memory allocation. Tap Start Settings → Control Panel , then double tap the System tab. Select Memory and adjust the slider.
	<i>Too many applications are installed in your terminal.</i>	If you have installed additional applications on your terminal, remove unused applications to recover memory. Tap Start Settings → Control Panel , and double tap Remove Programs , select the unused programs and tap Remove .

Problem	Cause	Solution
Your Terminal doesn't accept scan input.	<i>Scan window is not clean.</i>	Clean the scan window with a soft cloth.
	<i>Object trembles while scanning.</i>	Be careful the object should not tremble while scanning.
	<i>Scanning application is not loaded.</i>	Tap Start , then Settings → Control Panel , and select the System tab to verify the unit is loaded with a scanning application.
	<i>Unreadable barcode.</i>	Be sure the terminal cannot read spoiled barcodes.
	<i>Distance between your terminal and the object is too far or close.</i>	Adjust the distance between them by approximately 6 inches, and try again.
	<i>Terminal is not programmed for the barcode.</i>	Verify the terminal is programmed to accept the type of barcode you are scanning.
	<i>When scanning under direct rays.</i>	Incline the barcode at an angle of 45 degrees or scan against direct rays.
ActiveSync doesn't operate.	<i>Terminal removed from cradle during communications.</i>	Replace the terminal into the cradle.
	<i>Incorrect cable configuration.</i>	See if your cable is authentic, and check the connecting status.
	<i>ActiveSync was incorrectly installed or configured.</i>	Install the ActiveSync program again.
	<i>When it connects you by Guest, not by the name you made.</i>	Take the terminal out of the cradle, then replace the terminal in the cradle and give your name again.
No sound is audible.	<i>Volume setting is low or turned off.</i>	Check the volume slider in Volume & Sounds (Tap Start → Settings → Control Panel) to ensure the volume is set to an adequate level.
	<i>Dust is in the speaker.</i>	Clean up the speaker.
Terminal doesn't recognize my handwriting.	<i>Character strokes written incorrectly with the stylus.</i>	For your terminal to recognize handwriting input with the stylus, characters must be written in a certain way.
	<i>Character strokes written on the wrong portion of the LCD screen.</i>	Adjust the letter recognizer.

Chapter 7. Technical Specifications

1. Physical Characteristic

Dimensions*	30(Head) H / 27(Tail) H x 176.2 L x 77.8 W
Weight (including battery)*	310g
Drop Specification	1.2m drop to concrete
Operating Temperature	-20°C ~ 60°C
Storage Temperature	-30°C ~ 70°C
Environmental Sealing	IP54 standard (Dust-protected, Protected splashing water)
Humidity	5% to 95% RH non-condensing
Electrostatic Discharge (ESD)	8KVDC on air, 4KVDC on contact
Keys	2 Trigger button, 4 way direction Key, Send, End, Power, Backlit and user selectable 12 keys, Keypad Backlit Support

* Subject to change without notice.

2. Performance Characteristics

CPU	Intel XScale PXA255 400MHz CPU	
Operating System	Microsoft Windows CE™ .NET v4.2	
Memory (ROM/RAM)	- Flash ROM: 160MBytes - SDRAM: 64Mbytes (128Mbytes Optional)	
Display	- 3.5" TFT Color LCD (Transflective Type) - Resolution: 240 x 320 pixel	
Standard Communications	USB, IrDA	
Sound (MIC and Speaker)	Water-proof, internal microphone and speaker for voice recorder	
Expansion Slot	SD slot	
Radio Capacity+	- WWAN: CDMA (cdma2000 1x), GPRS(Optional), DoPa (Option) - WLAN(Optional): IEEE802.11 / IEEE802.11b	
Barcode Scanner¶	- Laser Scanner . 1D(leaner codes): UPC/EAN/KAN, Code 39, Code 128, Code 93, Codabar, NW7, Interleaved 2 of 5, Plessy, Code 11 and others	
SW	- Desktop device manager: Microsoft® ActiveSync - xPIMS v2.0 (Today, Calendar, Task, Contacts, Notes and PIMS back-up) - Handwriting Recognition: Customized <i>Jipilmook</i> ™ v4.0	
Application Development	- Microsoft SDK for Windows CE - InnoTeletek SDK available to support barcode scanning	
Battery	Main Battery	Rechargeable Li-Ion battery (3.8VDC, 2000mAh)
	Back-up Battery	Rechargeable coined battery (3.3V, 100mAh) for clock and data backup
	Battery Life	12 ~ 72 hours
	Charging Time	3 hours Max.

3. Service Information

InnoTeletek, Inc.

461-25 Junmin-Dong, Yusung-Gu, Daejeon, Republic of Korea 305-811

Tel: +82-(0)42-476-1320~6

Fax: +82-(0)42-476-1327

E-mail: service@innoteletek.com

Limited Warranty Statement.

General

This Limited Warranty applies to the InnoTeletek brand name products sold with this Limited Warranty Statement.

This Limited Warranty may be enforced in any country where InnoTeletek or its authorized service providers offer warranty service subject to the terms and conditions set forth in this Limited Warranty Statement.

However, warranty service availability and response times may vary from country to country and may also be subject to registration requirements in the country of purchase.

InnoTeletek warrants that the InnoTeletek product you have purchased from InnoTeletek or from an InnoTeletek authorized reseller is free from defects in materials and or workmanship under normal use during the warranty period.

The warranty period starts on the date of purchase from InnoTeletek or from a InnoTeletek authorized reseller. You dated sales or delivery receipt, showing the date of purchase of the product, is our proof of purchase date.

During the warranty period, InnoTeletek will repair or replace the defective parts with new parts, or, at InnoTeletek's discretion, used parts that meet or exceed performance specifications for new parts. All parts or products removed under this warranty become property of InnoTeletek. The replacement part or product takes on the warranty status of the removed part or product. In the unlikely event that your InnoTeletek product has a recurring failure, InnoTeletek, at its discretion, may elect to replace your product with comparable product. This is your exclusive remedy for defective products.

Before returning any unit for service, be sure to back up data and remove any confidential, proprietary, or personal information. InnoTeletek is not responsible for damage to or loss of any programs, data or removable storage media.

This Limited Warranty does not apply to expendable parts. This Limited Warranty does not extend to any product from which the serial number has been removed, damaged or rendered defective (a) as a result of accident, misuse, abuse, or other external causes;(b) by operation outside the usage parameters stated in the user documentation that shipped with the product; (c) by the use of parts not manufactured or sold by InnoTeletek; or (d) by modification or service by anyone other than (i) InnoTeletek, (ii) a

InnoTeletek authorized service provider, or (iii) your own installation of endUser replaceable parts if available for your product in the servicing country.

Limitation of Liability

InnoTeletek is not liable for any damages caused by the product or the failure of the product to perform, including any lost profits, lost savings, incidental damages, or consequential damages. InnoTeletek is not liable for any claim made by a third party or made by you for a third party.

This limitation applies whether damages are sought, or a claim made, under this Limited Warranty or as a tort claim (including negligence and strict product liability), a contract claim, or any other claim. This limitation can not be waived or amended by any person. This limitation of liability will be effective even if you have advised InnoTeletek or an authorized representative of InnoTeletek of the possibility of any such damages. This limitation of liability, however, will not apply to claims for personal injury.

EXCEPT AS EXPRESSLY SET FORTH IN THIS LIMITED WARRANTY, INNOTELETEK MAKES NO OTHER WARRANTIES, EXPRESSED OR IMPLIED, INCLUDING ANY IMPLIED WARRANTIES OF MERCHANTABILITY AND FITNESS FOR A PARTICULAR PURPOSE. INNOTELETEK EXPRESSLY DISCLAIMS ALL WARRANTIES NOT STATED IN THIS LIMITED WARRANTY.

ANY IMPLIED WARRANTIES THAT MAY BE IMPOSED BY LAW ARE LIMITED TO THE TERMS OF THIS WORLDWIDE LIMITED WARRANTY STATEMENT.

Some states or countries do not allow limitation on how long an implied warranty lasts or the exclusion or limitation of the incidental or consequential damages for consumer products. In such states or countries, some exclusions or limitations of this Limited Warranty may not apply to you. This Limited Warranty gives you specific legal rights.

You may also have other rights that may vary from state to state or from country to country. You are advised to consult applicable state or country laws for a full determination of your rights.

Options and software

The warranty terms and conditions for InnoTeletek options are as indicated in the Limited Warranty Statement applicable to InnoTeletek options.

InnoTeletek's only obligations with respect to software distributed by InnoTeletek under the InnoTeletek brand name are set forth in the applicable end-user license or program license agreement. Non-InnoTeletek hardware and software products are provided "AS-IS." However, non-InnoTeletek manufacturers, suppliers, or publishers may provide their own warranties directly to you.

Warranty Period

The warranty period for this product is one (1) year from the date of product purchase. This warranty does not extend to expendable parts.

Types of Warranty Service

If your product needs service, call the InnoTeletek After-sales Service Dept. in your country or state at the number listed in the Contacting Customer

Support in later section. A technical support specialist will help you diagnose the problem.

Carry-in Warranty service

Carry your product into InnoTeletek Authorized Center of warranty repair. To locate the service provider nearest you, access the service provider's location on the InnoTeletek website; www.InnoTeletek.com or local reseller's website you have purchased InnoTeletek product.

Contacting InnoTeletek

Be sure to have the following information handy before you call InnoTeletek or service provider.

- Product Serial Number and Model Name
- Application error messages
- Add-on options
- Operating system with version number
- Third party hardware or software
- Detailed questions.

To post questions to InnoTeletek technical support professionals, send e-mail to service@innoteletek.com . Or call +82-(0)42-476-1320