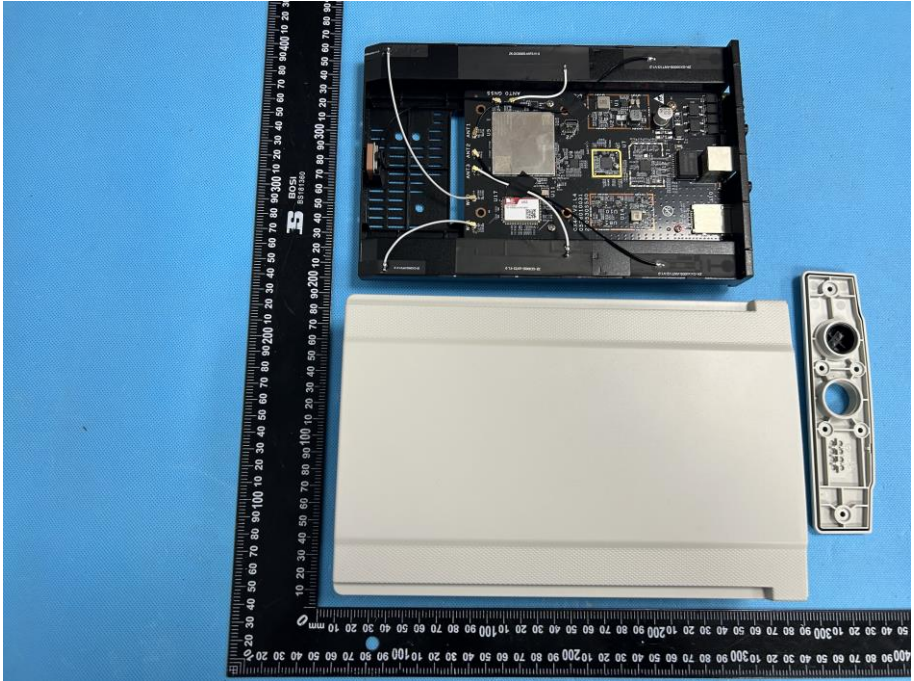
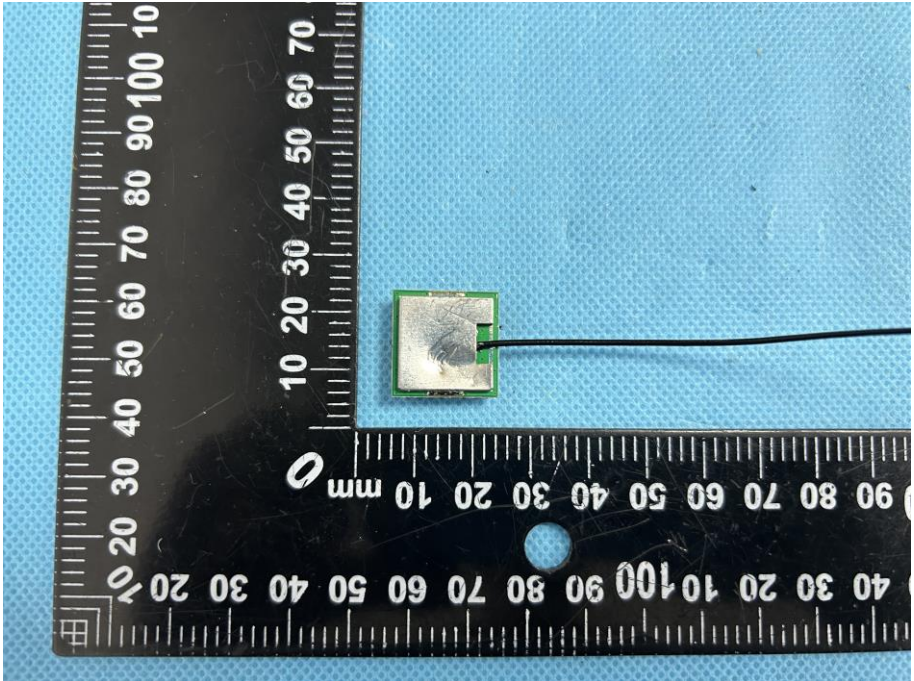
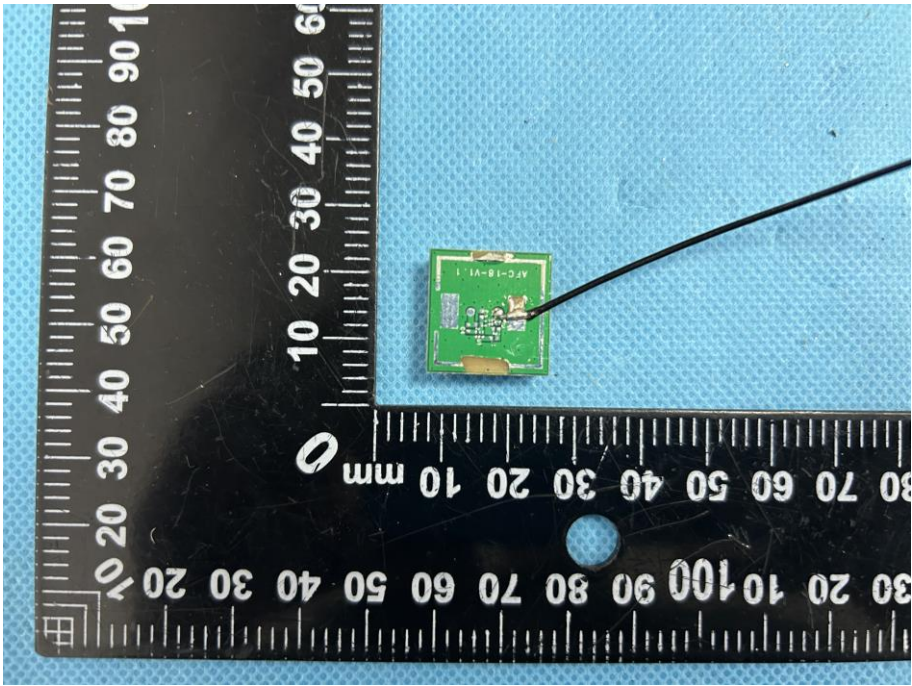
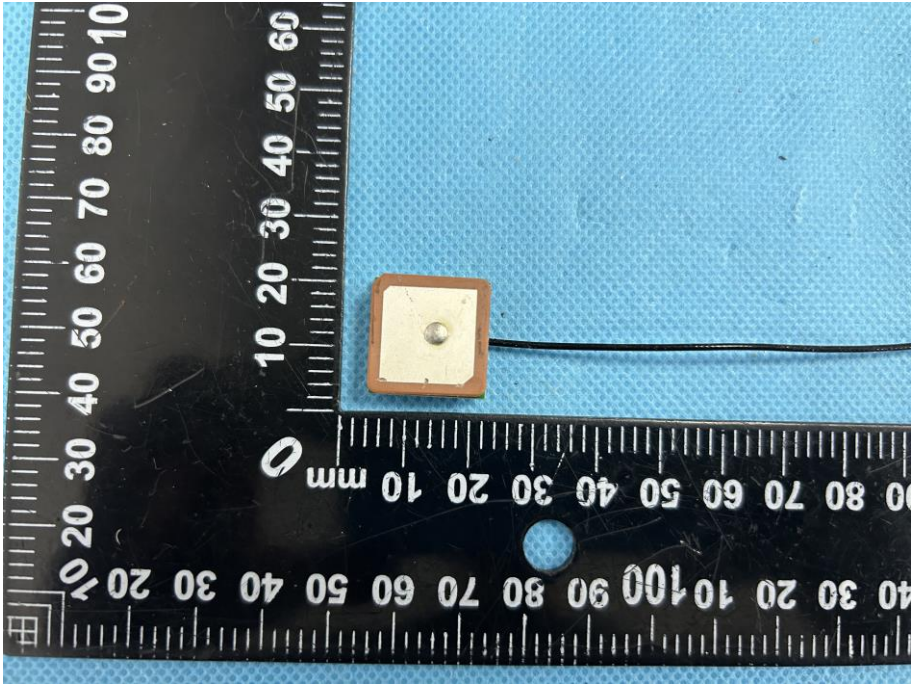
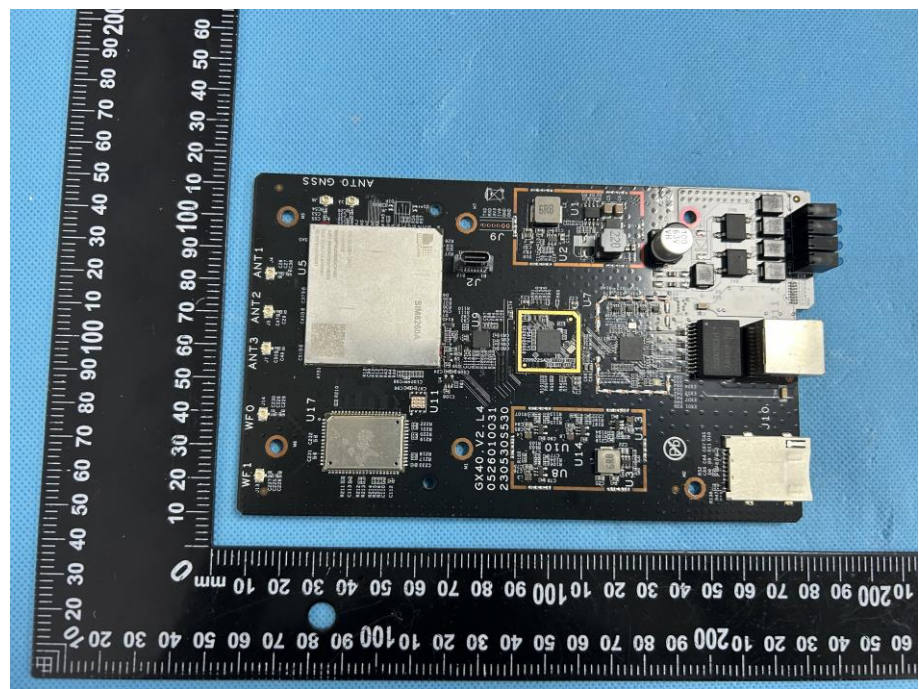


EXHIBIT 3 - EUT INTERNAL PHOTOGRAPHS

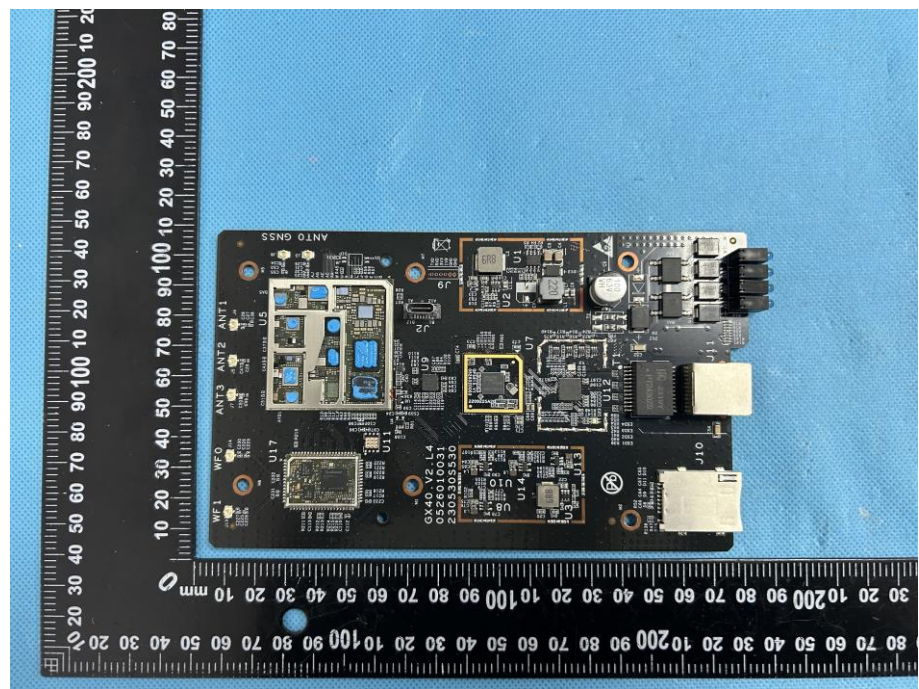
<p>EUT Housing and Board View 1</p>	 A photograph showing the internal components of an EUT housing. The housing is open, revealing a printed circuit board (PCB) with various electronic components, including a large integrated circuit, capacitors, and connectors. A white plastic cover is placed below the PCB. To the right of the PCB is a small, rectangular metal component with two circular holes. A black ruler with white markings is positioned vertically on the left side of the image for scale.
<p>Solder Board-Component View 1</p>	 A close-up photograph of a soldered component on a PCB. The component is a small, square, green package with a silver solder pad on one side. A black wire is connected to the component. A black ruler with white markings is positioned vertically on the left side of the image for scale.

<p>Solder Board-Component View 2</p>	 <p>A photograph showing a small green PCB component with a black wire attached. The component is placed on a blue textured surface next to a black ruler with white markings. The ruler shows measurements in millimeters, with the component positioned between the 10 mm and 30 mm marks. The component has some text on it, including '1 1A-1B-11'.</p>
<p>Solder Board-Component View 3</p>	 <p>A photograph showing a square component with a black wire attached. The component is placed on a blue textured surface next to a black ruler with white markings. The ruler shows measurements in millimeters, with the component positioned between the 10 mm and 30 mm marks. The component has a white square center with a small circular feature.</p>

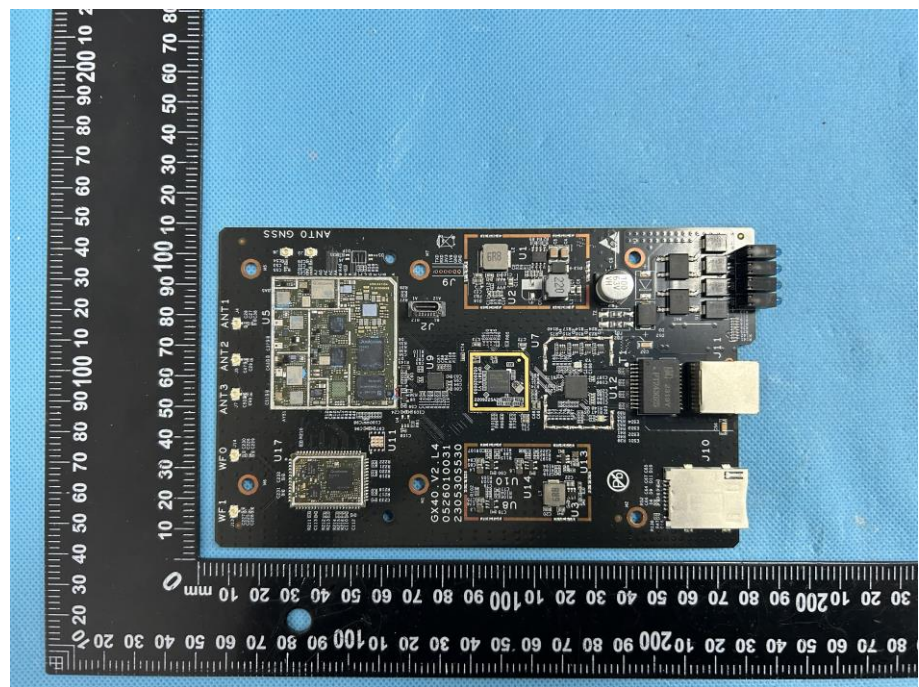
**Solder
Board-Component
View 4**



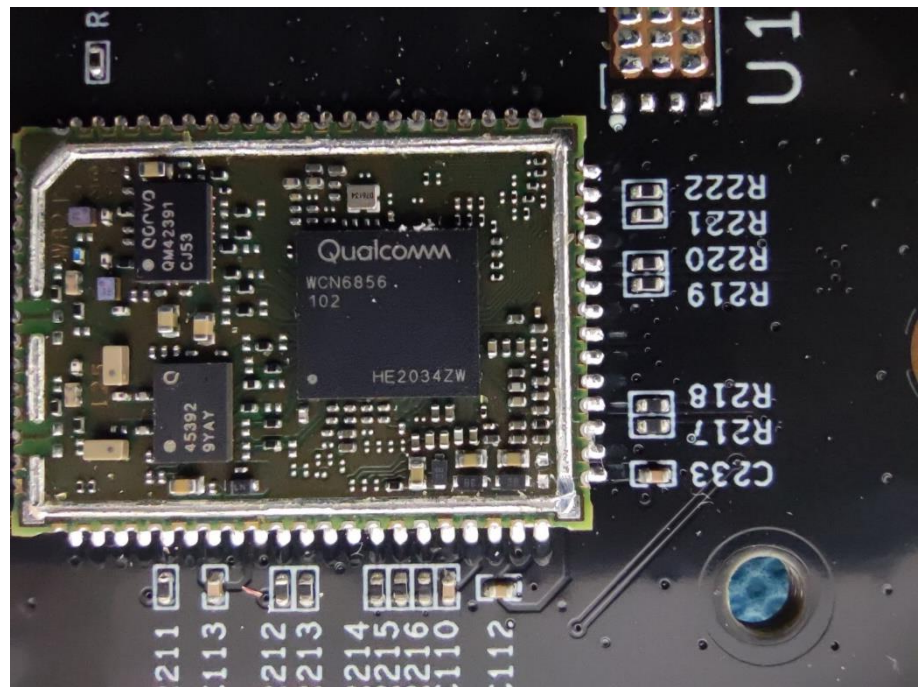
**Solder
Board-Component
View 5**



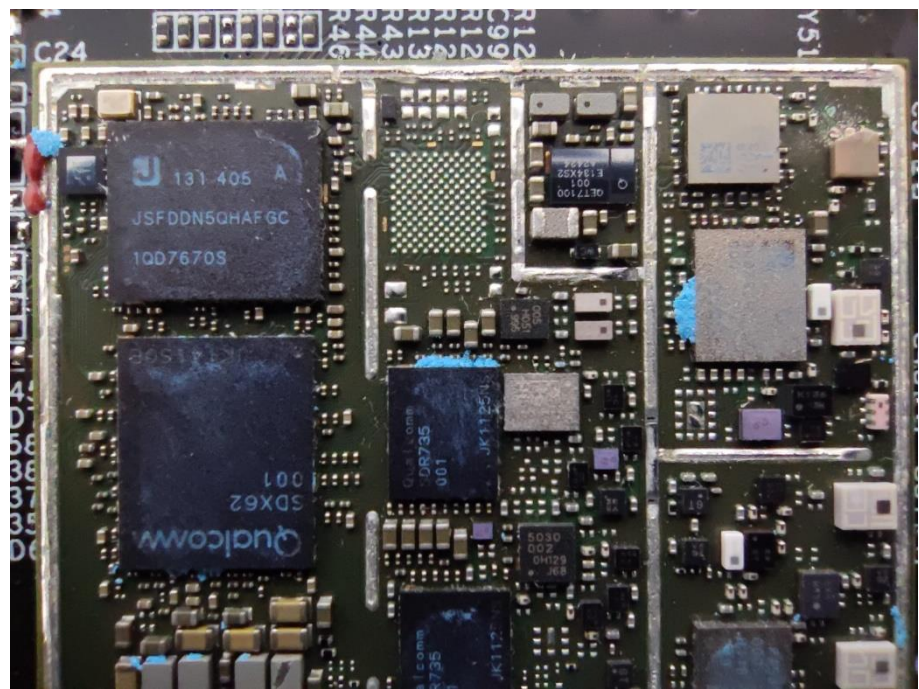
**Solder
Board-Component
View 6**



**Solder
Board-Component
View 7**



Solder
Board-Component
View 8



Solder
Board-Component
View 9

