

Shenzhen zhongke wireless technology Co.Ltd

1st Floor, Building A, Daling Zhong Nuclear Industry Park, Longhua District, Shenzhen

1. SPEC

Input Impedance 50Ω

Input connector IPEX-1

Materia FPC

Radiation OMNI

Frequency 2400 ~ 5850MHz

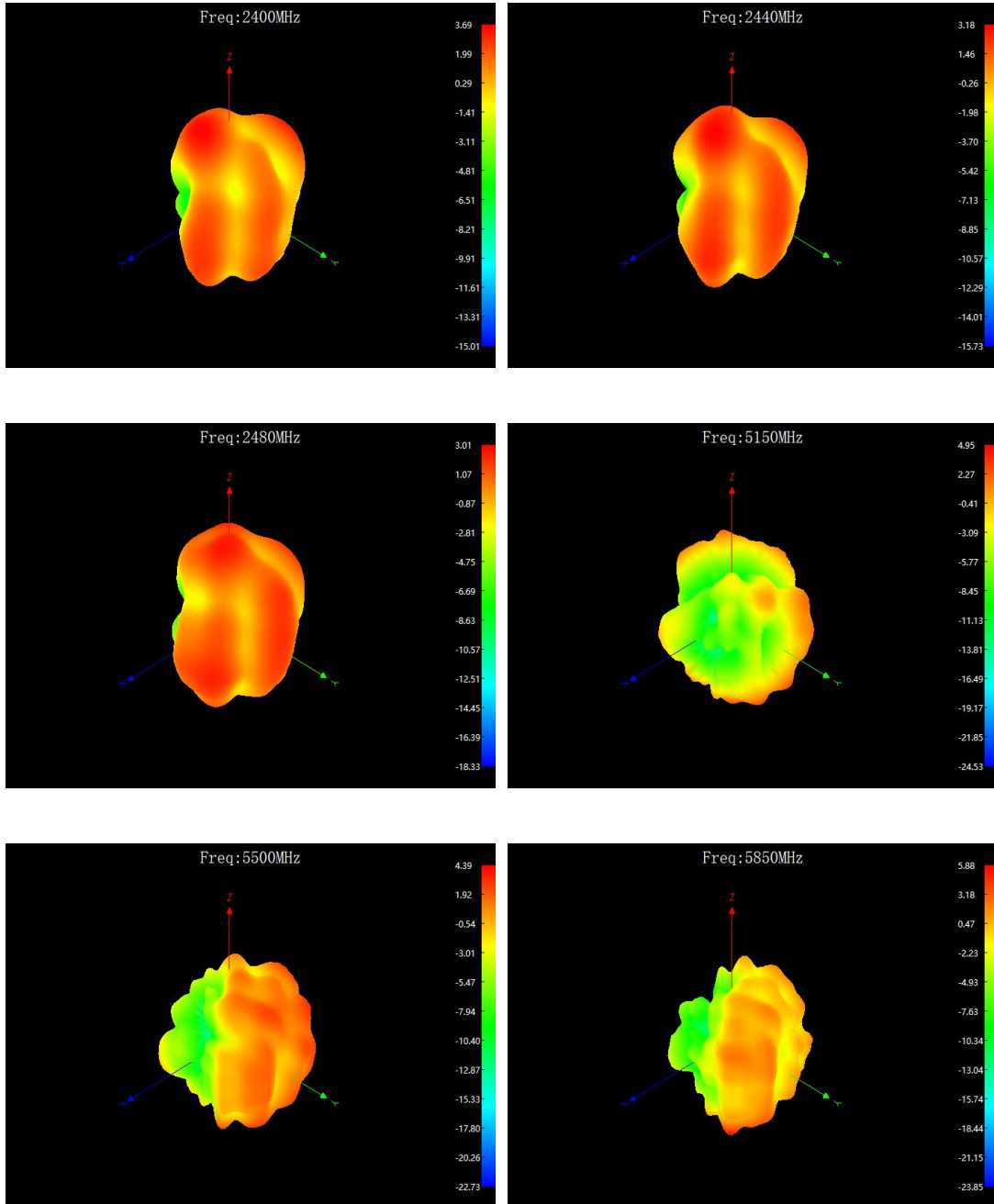
Cord length 125mm

2. Efficiency & Gain

Frequency/Mhz	Efficiency / %	MaxGain/dBi
2400	70.31	3.69
2410	69.5	3.68
2420	69.82	3.54
2430	67.14	3.27
2440	66.53	3.18
2450	66.99	3.15
2460	65.46	2.91
2470	65.61	2.81
2480	66.07	3.01
5150	61.09	4.95
5200	59.98	4.64
5250	59.16	4.41
5300	60.81	4.37
5350	60.26	4.58
5400	60.53	4.45
5450	63.39	4.68
5500	64.12	4.39
5550	62.81	4.06
5600	61.38	3.76
5650	62.66	3.95
5700	62.09	4.35
5750	59.98	4.87
5800	62.81	5.63

5850	62.52	5.88
------	-------	------

3. Radiation pattern



4. Product Drawing

