



Wireless/Internet SDIO WLAN card



SDIO WLAN Card
User's Manual
ver. 1.30

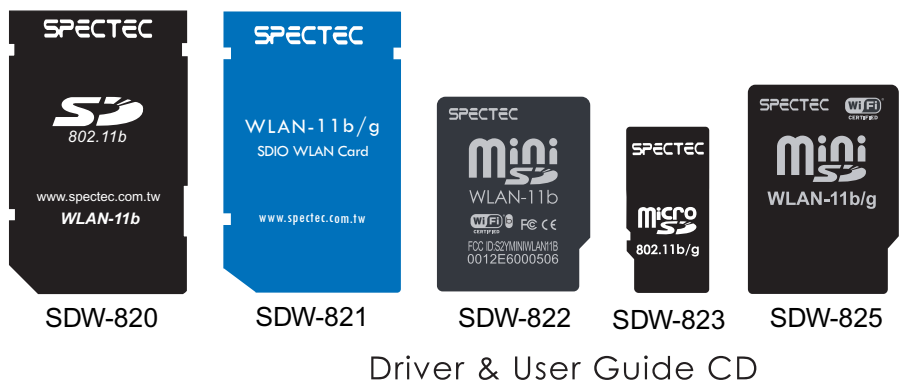
Content

Inside Package	P.1
System Requirements & Installation Description.....	P.1
Installation Procedure	P.2~5
Inserting the SDIO WLAN Card into a PDA	P.6
How to take a SDIO WLAN card out of a PDA.....	P.6
How to check Connect status	P.7~8
How to Connect Ad-hoc.....	P.9
How to Remove Settings.....	P.9
Wireless/Internet Speed Dial	P.10~11
How to Select Networks Manually	P.12
CD info.....	P.13
How to Install Software with CAB file.....	P.14
AP Compatibility List	P.15
Frequently Ask Question	P.16



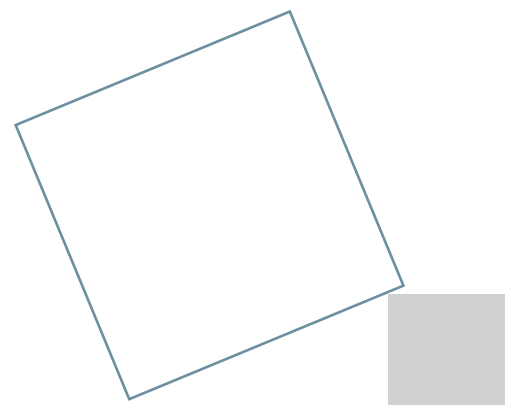
Thank you for choosing SDIO WLAN card, it is the smallest SDIO Wireless/Internet WLAN card available on the market today. It is easy to install and use, and provides unlimited online usage and connectivity wherever you are.

Inside Package



System Requirements & Installation Description

1. This SPECTEC SDIO Wi-Fi card can only be used in Pocket PCs with Windows Mobile 2003 or newer versions of this operation system.
2. This SPECTEC SDIO Wi-Fi card can only be used on PDAs with the SDIO drive.



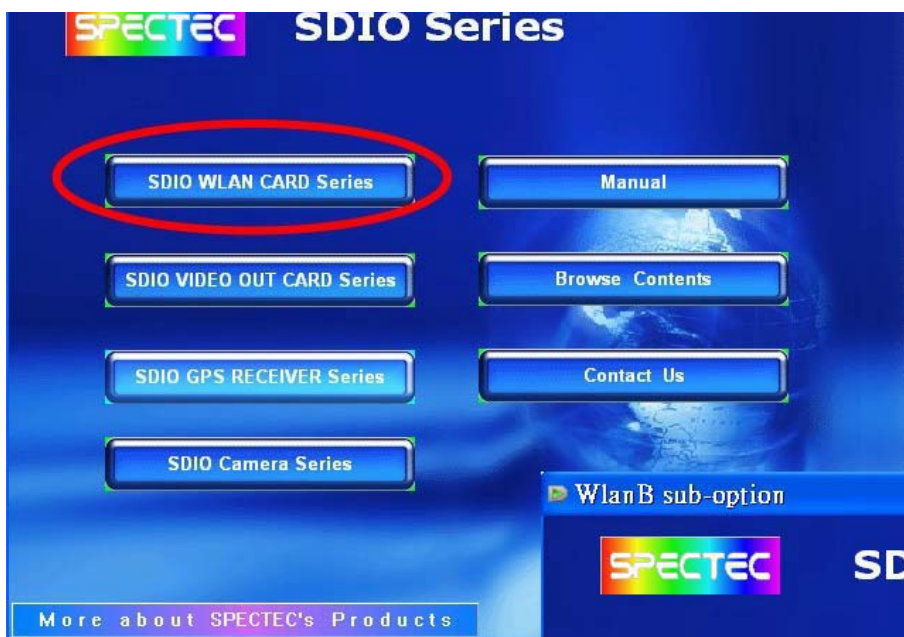
Installation Procedure

< First, connect PDA to your computer with a USB wire.



< Main menu window will pop-up when you insert the "Spectec SDIO Series" Installation CD by autorun:

< click the SDW-823 item.

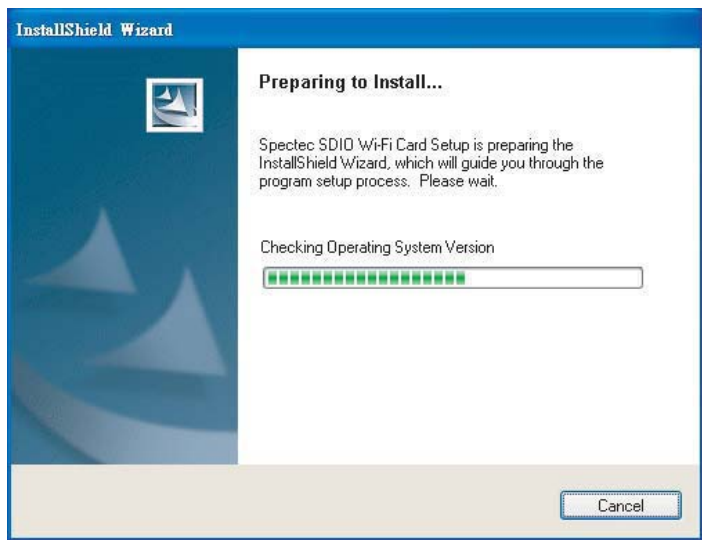
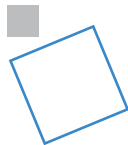




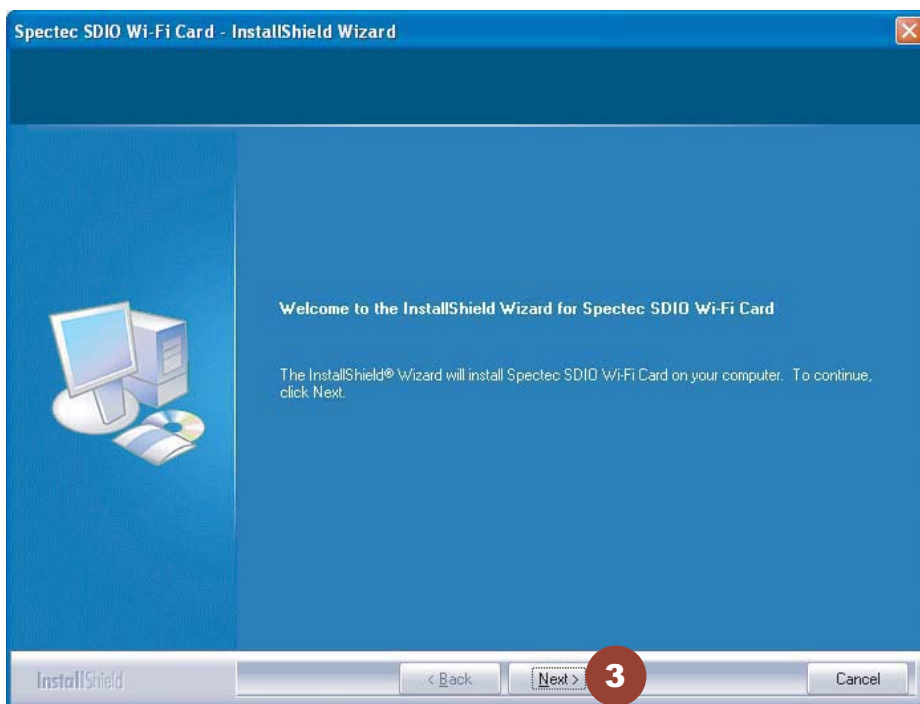
< Choose the desired **Language**, then click **OK**.



< The Installation menu will automatically appear on the screen.

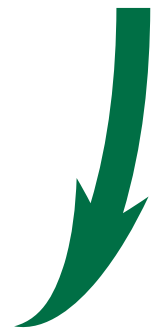
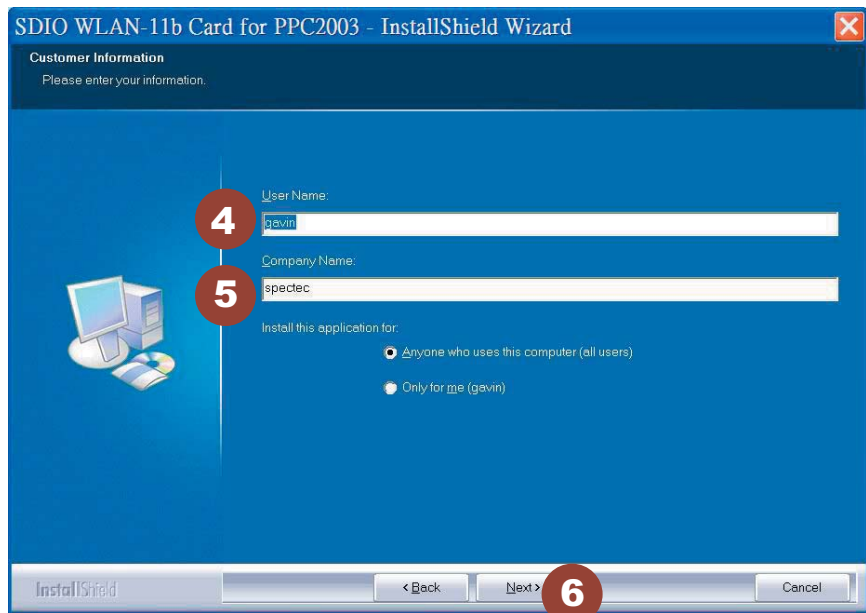


< Click **Next**





< Enter user information, then click **Next**.

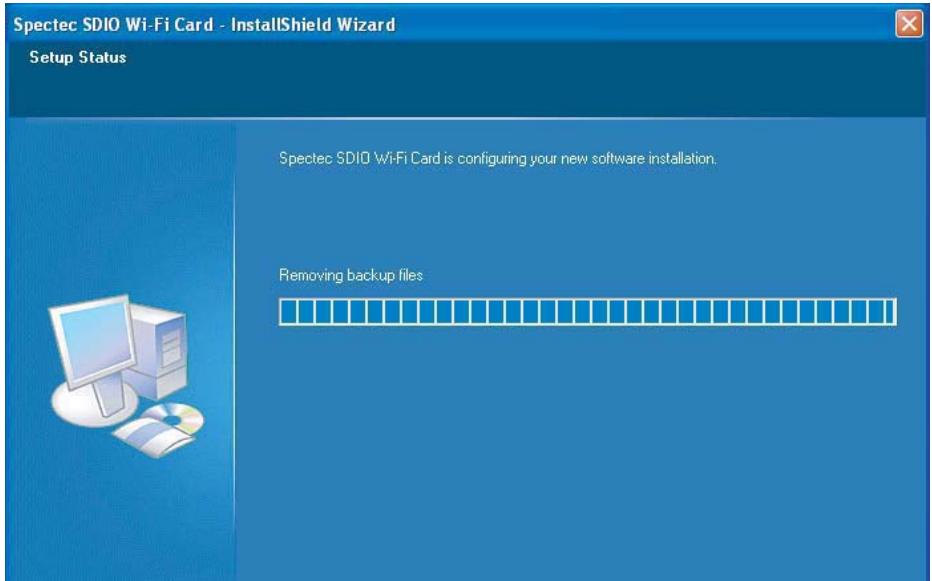


< Chose **Setup type**, then click **Next**

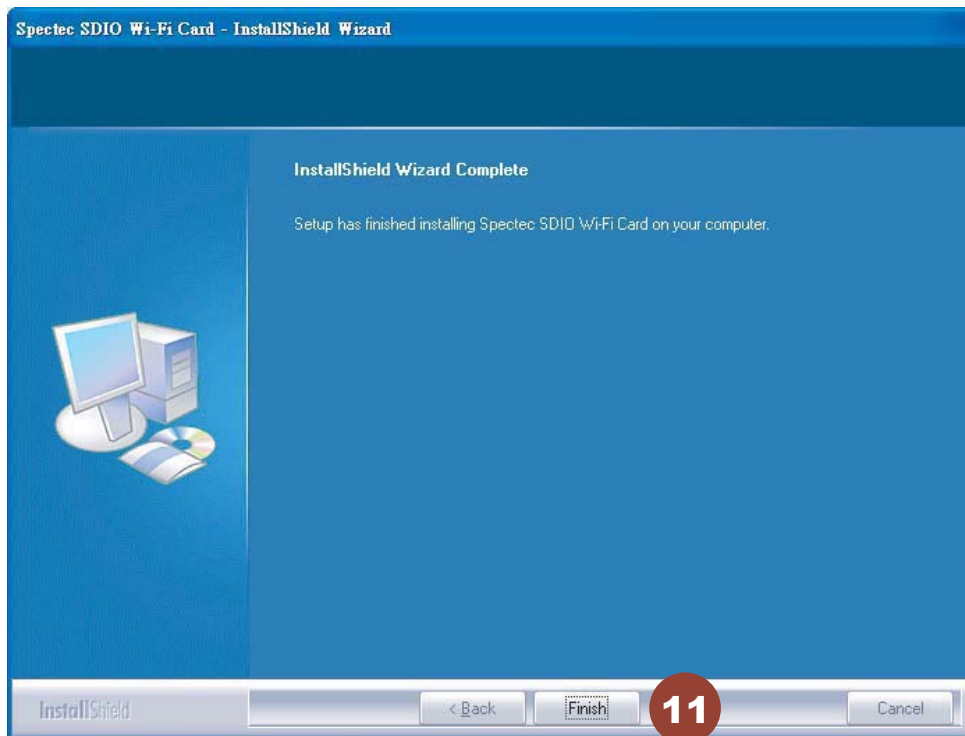
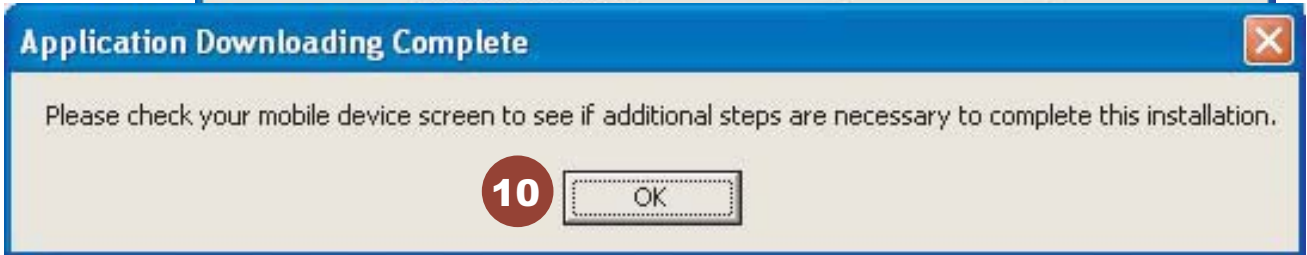
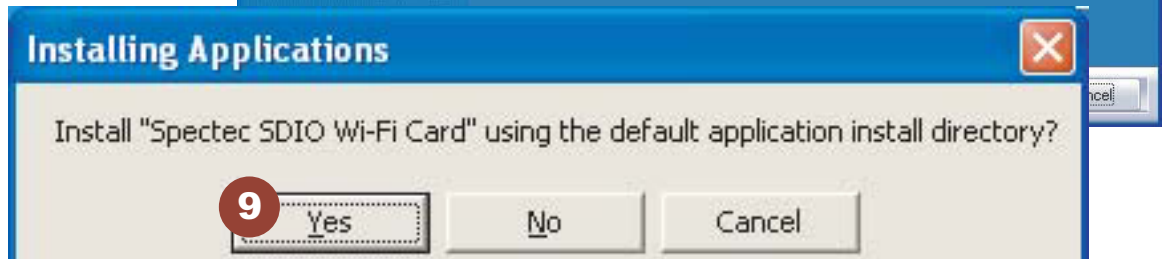




< The driver will be installed automatically.



< Click **Yes** to proceed with installation. Click **OK** to finish installation.



< Click **Finish** to complete the driver installation process.





■ Inserting the SDIO WLAN Card into a PDA

< Check the direction of the card.
Insert the card with the label side facing the front of the PDA until it clicks.

Different PDAs may have different drives. Make sure the direction is correct to avoid damaging the PDA's SD drive.

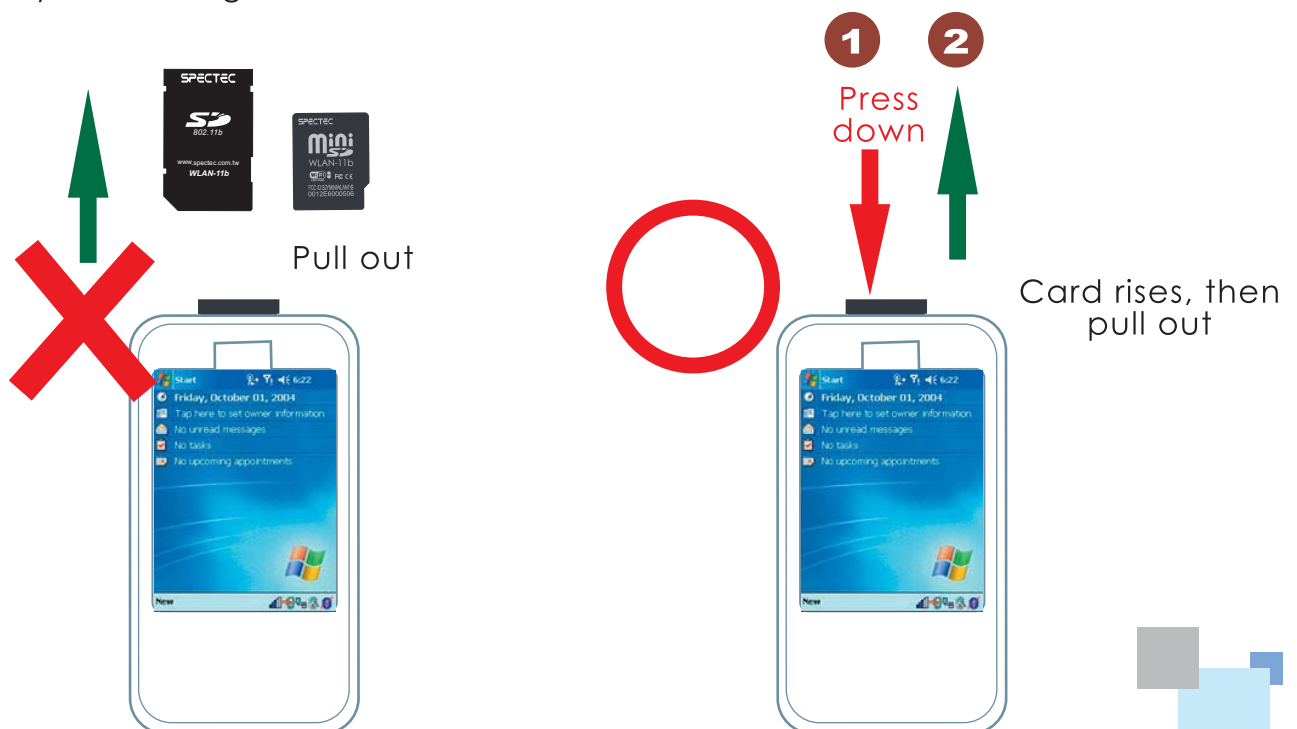
* Please do not keep inserting & removing the card, different PDAs needs an interval of 5 to 7 seconds to process.



■ How to take a SDIO WLAN card out of a PDA

< When removing the SDIO WLAN card from a PDA, simply press down on the card until it clicks. The card will rise up for easy removal. **DO NOT PULL** by force, or the slot may be damaged.

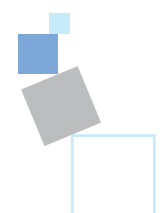
< This card is designed to be locked into the slot. Forcefully pulling the card out will not only damage this auto pop-out function, but also the slot and the wireless card.






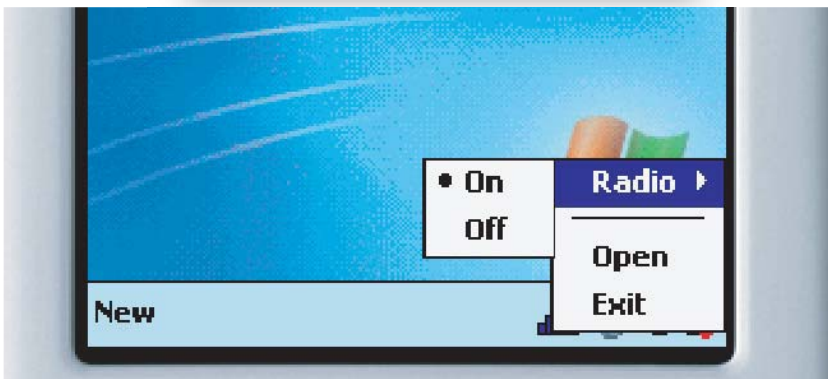
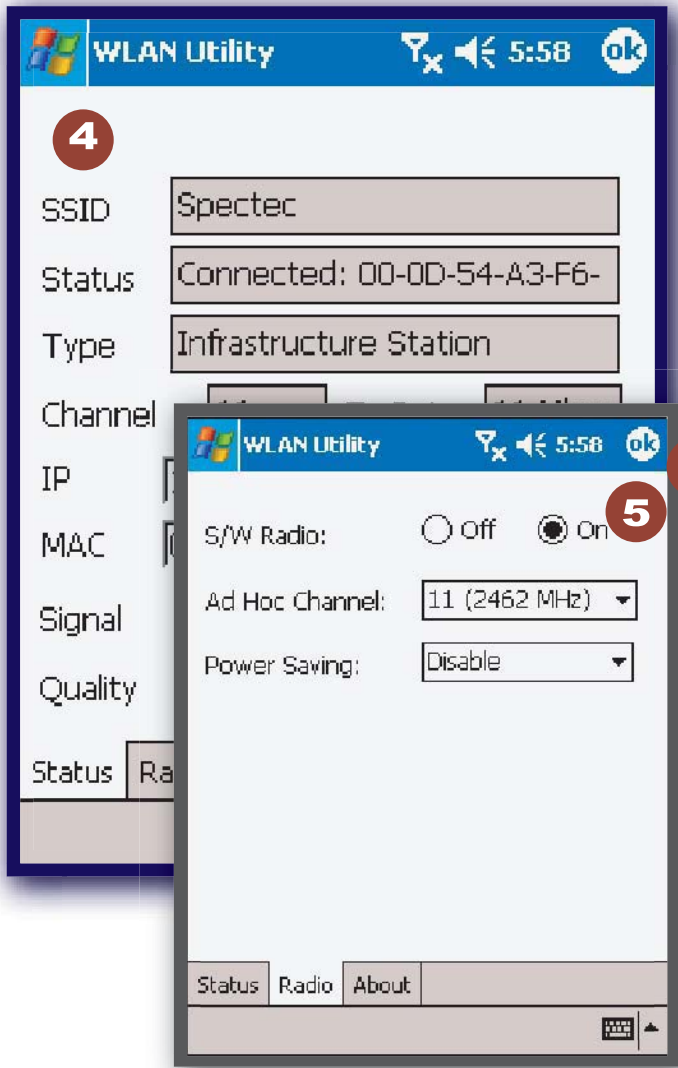
How to check Connect Status

- < After install the software, start path as **Start\Programs**.
- < After inserting the card into the PDA, click **Start**. Click **Programs** on the pull-down menu, then select .(Only built-in 11b card for PCC2003)





In "Radio" page of WLAN Utility, you may check **S/W Radio Off/on** for **Enable/Disable** Wi-Fi card, or you can also find a shortcut icon  at the lower right hand corner of the screen.



< Click , shortcut icon to switch **off** Wi-Fi radio

*** Note : The WLAN Utility can be only compatibility on PPC 2003(CE4.X) and few windows mobile 5.0(CE5.0) OS**

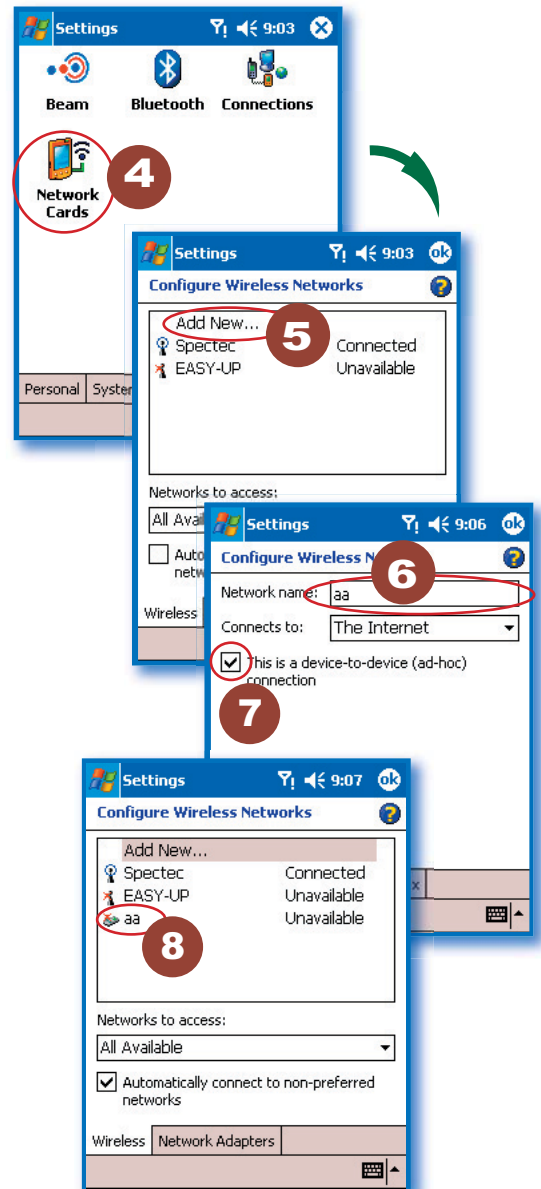


How to Connect Ad-hoc



PS: Channe 12 is the channel in America

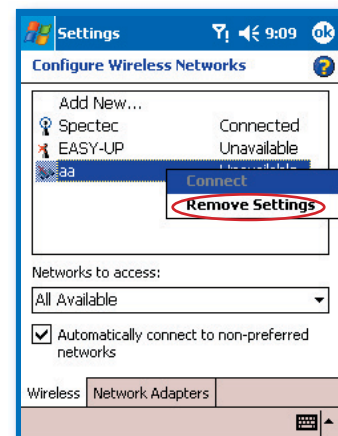
1. In **WLAN Utility**, select **Ad-Hoc Channel** (must be channel1).
2. Click **OK** to exit **WLAN Utility**.
3. Remove the card from PDA, then re-insert the card.
4. Go to PDA system: **Settings\Connections\ Network Cards**.
5. Click **Add New**.
6. Type in the name (ex. aa).
7. Check the “This is a device-to-device (ad-hoc) connection” box.
8. Click **OK**. The input name (ex. aa) will be added to the **Network Address**.



*Ad-hoc channel is a “Point-to-point” network segment. It provides you with a temporary LAN environment.

How to Remove Settings

In **Settings**, select the network name that you would like to remove. Wait 2 seconds for the '**Remove Settings**' pop-up window to appear.

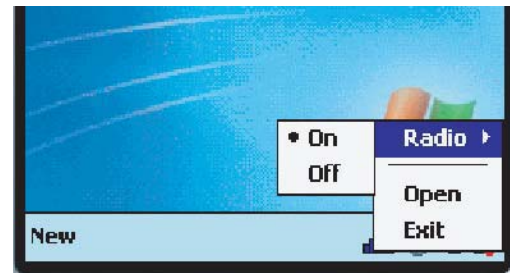




■ Wireless/Internet Speed Dial

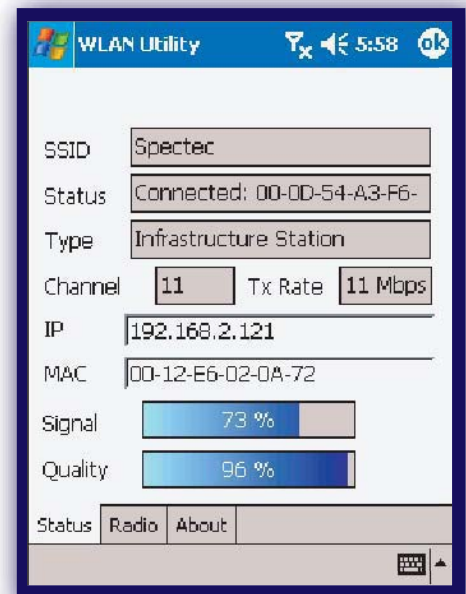
< Click 

1. Make quick changes to the wireless card **On/Off** function.
2. **“Open”** to go directly to WLAN Utility screen for more information.



WLAN Utility has 3 features (**Status/Radio/About**):

***Status** - Shows SSID, IP Address, Mac Address, Signal Strength, and Signal Quality information.



***Radio - Enable/Disable** Wi-Fi card and Power Saving mode selections.

- < Click **On** enables wireless network functions.
- < Click **Off** disables wireless network functions.
- < **Ad Hoc Channel:** Select ad hoc channels (1~11).



Power Saving:

- < **Disable:** No power saving.
- < **Enable (Max):** Maximum power saving. May affect download speed.
- < **Enable (Fast):** No affect on the download speed (recommend).



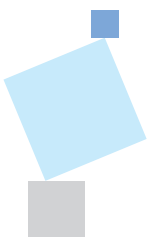
***About** -- Shows SPECTEC connections info.

< **Driver:** Current version of driver you installed.

< **Utility:** Current version of utility you installed.

< **SPECTEC Web Site:**
<http://www.spectec.com.tw>

< **Technical Support:**
support@spectec.com.tw

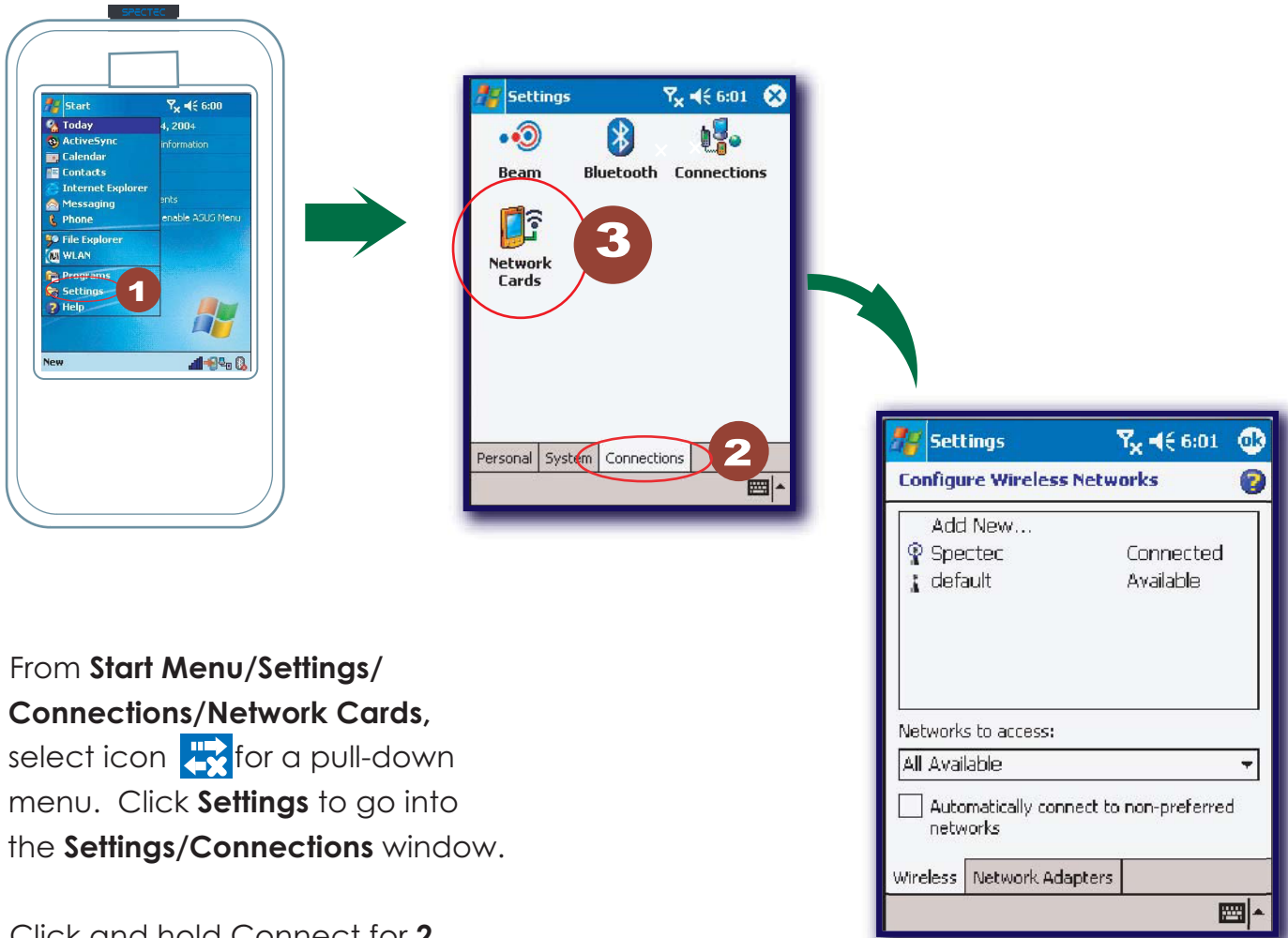




To Select Networks Manually

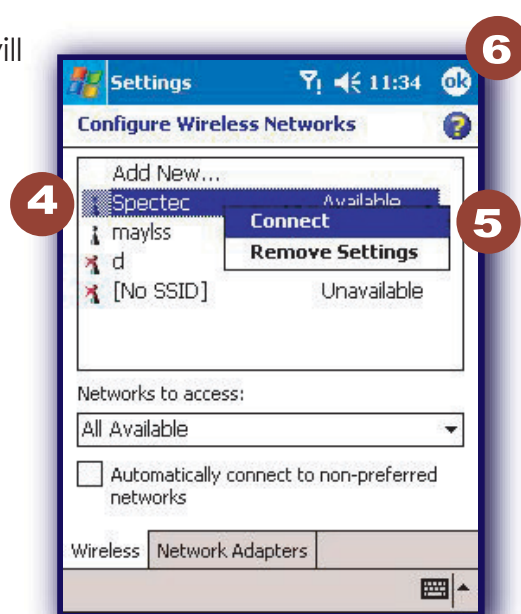
After inserting SDIO WLAN card into PDA, if the icon does not appear on the upper window, the network may be connected manually.

does not appear on the upper



< From **Start Menu/Settings/Connections/Network Cards**, select icon for a pull-down menu. Click **Settings** to go into the **Settings/Connections** window.

< Click and hold **Connect** for **2** seconds, then click **OK**. All available network selections will appear.



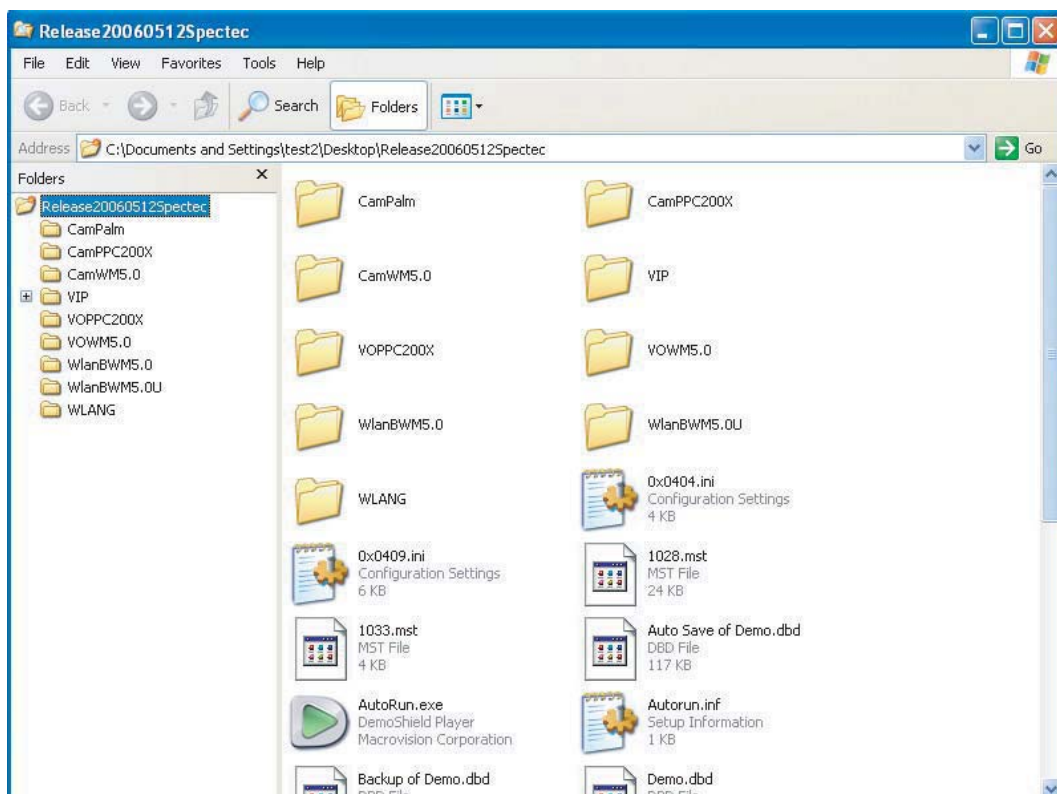


CD info

< Click **Browse Contents** button to review all the files on CD



< Review all the files list on CD





■ How to Install Software with CAB File

1. Driver and Utility (cab file)

Take out the WLAN card, click “reset”, connect computer through **Microsoft Active Sync**, download Driver cab file copy to any list of PDA, **double-click it** to finish install.

2. User Manul download (Adobe PDF)

Please go to the address - <http://www.adobe.com/products/acrobat/readstep2.html> to download free Adobe Reader software





AP Compatibility List

Test condition and test environment

DUT: WLAN-11b

Vendor	Accton		ASUS				Atheros		BENQ		BELKIN		Buffalo			
Model	IG 2004W		WL-500b		WL-530g		AR5002AP		AWL700		F5D7230		AG54		WLA-L11G-L	
Rate	TX	RX	TX	RX	TX	RX	TX	RX	TX	RX	TX	RX	TX	RX	TX	RX
Auto Rate	1.55	2.62	1.71	2.88	1.49	2.43	1.61	2.84	1.67	2.39	1.59	2.43	1.61	2.82	1.66	2.90

Vendor	Cisco		Corega		DLink				Gemtek		Interepoch		Intersil		Linksys	
Model	AP1220		WLBARGP		DLink624		DLink724		WX-1500 series		IWE-1100A		ISL39300		WRK 54G	
Rate	TX	RX	TX	RX	TX	RX	TX	RX	TX	RX	TX	RX	TX	RX	TX	RX
Auto Rate	1.67	2.87	1.67	2.67	1.63	2.80	1.63	2.80	1.61	2.44	1.60	2.44	1.70	2.91	1.64	2.78

Vendor	Maxim		OriNoCo		PCI		Proxim		RAYTAC		SMC		3Com			
Model	WAP-G54A		AP-200		BLW-04gm		AP 600		DS2400		WBR14-G		XJACK		AP2000	
Rate	TX	RX	TX	RX	TX	RX	TX	RX	TX	RX	TX	RX	TX	RX	TX	RX
Auto Rate	1.63	2.89	1.56	2.73	1.63	2.80	1.63	2.79	1.64	2.67	1.67	2.43	1.60	2.78	1.68	2.78

Vendor	Synnex		MSI		AboCom		SENAO		ZERO ONE	
Model	LM-WCAS3040		RG54G2		WB104k		NL-2511SR+		AF411W	
Rate	TX	RX	TX	RX	TX	RX	TX	RX	TX	RX
Auto Rate	1.59	2.77	1.60	2.65	1.69	2.87	1.66	2.49	1.54	2.69

* Measurements: mbps RX: Receiver TX: Sender

* Test Environment : Night without Raining° C ~ 32 C

Distance from 5m ~ 30m

* Collect data tool : Windows CE Platform Builder 5.0 performance monitor tool



■ Frequently Ask Question

Q: After installing the CD-ROM, how many files will be installed onto the device?

A: After installation, some dll files are installed in **My Device \Windows**, and the **WLAN Utility** in **Programs**. However, these files are quite small, and total about 300 KB.

Q: How do I temporarily stop the wireless/internet connection?

A: You can click on the “**Off**” button in **WLAN Utility**. When all 5 blue bars are white, Wi-Fi is disabled. Selecting the “**On**” setting will reconnect you to the internet.

Q: What do the 5 bars from “WLAN Utility” indicate?

A: These 5 bars show the strength of the signals. More blue bars indicate stronger signals, while all white bars indicate no connection.

Q: Why can't I browse the web page even though the card has an IP address?

A: When connecting to the internet with a weak signal, CRC may have too many errors to allow viewing a web page. Please try your connection around strong signals.

Q: Can your Wi-Fi card be used for internet phone such as Skype?

A: Yes, our Wi-Fi card can be used with Skype software. We suggest to use in an empty field, and with wired headphones for better results.



Warranty

Thank you for your purchase of our product. For Spectec's quality service, please read the following for your rights.

1. Warranty period is 1 year, starting from the date of original purchase. Please provide original purchase receipt with purchase date when inquiring for service.
2. This product has passed all quality control and AP tests for quality assurance. We suggest to use it with the AP list, and other accepted industry-standard equipments.
3. If the damage is resulted from product design, defects in material or poor workmanship, we will repair or exchange your product.
4. This warranty does not cover failures resulted from accidents, misuse, abuse, neglect, mishandling, misapplication, alteration, faulty installation, improper maintenance, power line surge, lightning damage, modification, serviced by anyone other than an Authorized Servicer, or other natural causes.
5. This warranty does not cover failures caused by products not supplied by the warrantor.



■ License Agreement

CAREFULLY READ THE FOLLOWING TERMS AND CONDITIONS BEFORE USING THIS PRODUCT. IT CONTAINS SOFTWARE, THE USE OF WHICH IS LICENSED BY SPECTEC, Co., Ltd., TO ITS CUSTOMERS FOR THEIR USE ONLY AS SET FORTH BELOW. IF YOU DO NOT AGREE TO THE TERMS AND CONDITIONS OF THIS AGREEMENT, DO NOT USE THE SOFTWARE. USING ANY PART OF THE SOFTWARE INDICATES THE ACCEPTANCE OF THESE TERMS.

LICENSE: SPECTEC grants you a nonexclusive license to use the accompanying software program(s) (the "Software") subject to the terms and restrictions set forth in this License Agreement. You are not permitted to lease, rent, distribute or sublicense the Software or to use the Software in a time-sharing arrangement or in any other unauthorized manner. Further, no license is granted to you in the human readable code of the Software (source code). Except as provided below, this License Agreement does not grant you any rights to patents, copyrights, trade secrets, trademarks, or any other rights in respect to the Software.

The Software is licensed to be used on any workstation or any network server owned by or leased to you, provided that the Software is used only in connection with a SPECTEC adapter. You may reproduce and provide one (1) copy of the Software and supporting documentation for each such workstation or network server on which the Software is used as permitted hereunder. Otherwise, the Software and supporting documentation may be copied only as essential for backup or archive purposes in support of your use of the Software as permitted hereunder. You must reproduce and include all copyright notices and any other proprietary rights notices appearing on the Software and the supporting documentation on any copies that you make.

NO ASSIGNMENT; NO REVERSE ENGINEERING: You may not transfer or assign the Software and/or this License Agreement to another party without the prior written consent of SPECTEC. If such consent is given and you transfer or assign the Software and/or this License Agreement, then you must, at the same time, either transfer any copies of the Software as well as the supporting documentation to the same party or destroy any such materials not transferred. Except as set forth above, you may not transfer or assign the Software or your rights under this License Agreement. Modification, reverse engineering, reverse compiling, or disassembly of the Software is expressly prohibited.

TRADE SECRETS; TITLE: You acknowledge and agree that the structure, sequence, and organization of the Software are the valuable trade secrets of SPECTEC and its suppliers. You agree to hold such trade secrets in confidence. You further acknowledge and agree that ownership of, and title to, the Software and all subsequent copies thereof, regardless of the form or media, are held by SPECTEC and its suppliers.

TERM AND TERMINATION: This license will expire ten (10) years from the date that you first use the Software, if it is not earlier terminated. You may terminate it at any time by destroying the Software and Documentation together with all copies and merged portions in any form. It will also terminate immediately if you fail to comply with any term or condition of this License Agreement. Upon such termination, you agree to destroy the Software and documentation, together with all copies and merged portions in any form.

GOVERNING LAW: This License Agreement shall be governed by the laws of the State of California as such laws are applied to agreements entered into and to be performed entirely within California between California residents and by the laws of the United States. You agree that the United Nations Convention on Contracts for the International Sale of Goods (1980) is hereby excluded.

LIMITED WARRANTY; LIMITATION OF LIABILITY: All warranties and limitations of liability applicable to the Software are as stated on the Limited Warranty Card or in the product manual accompanying the Software. Such warranties and limitations of liability are incorporated herein in their entirety by this reference.

SEVERABILITY: In the event any provision of this License Agreement is found to be invalid, illegal or unenforceable, the validity, legality and enforceability of any of the remaining provisions shall not in any way be affected or impaired and a valid, legal and enforceable provision of similar intent and economic impact shall be substituted therefor.

ENTIRE AGREEMENT: This License Agreement sets forth the entire understanding and agreement between you and SPECTEC and may be amended only in a writing signed by both parties.

Spectec Computer Co., Ltd.

6F No. 92, Nanking E. Rd. Sec. 5, Taipei, Taiwan, R.O.C.

Tel: 886-2-2753-2953

Fax: 886-2-2753-2949

Fax: 886-2-2753-2497

www.spectec.com.tw

spectec@spectec.com.tw

spectec@ms17.hinet.net



SDW-820 SDIO WLAN-11b Card



Specifications

Interface: Support SDIO 1.0

Frequency: Fully integrated, 2.4 GHz band direct conversion transceiver

Security: High performance engine for WEP, WPA, TKIP and AES support

Radio Type: IEEE 802.11b support DSSS system

Operating Channels: 1~14 channels

TX Data Rate: 1, 2, 5.5, 11 Mbps Data Rate

Low Voltage:

< **Power consumption:** Operating Voltage: 3.0 V ~ 3.5 V

< **Receive mode:** 60 mA

< **Transmit mode:** 116 mA for 15 dBm Pout

< **Avg. Operation:** 188 mA

Support:

< STA (Ad-hoc and infrastructure) and AP mode

< DCF/PCF

OS Support: PPC 2003, Windows Mobile 2003 Second Edition for PPC & Smartphone, Mobile 5.0 for PPC & Smartphone, WinCE 4.x

Operating Range: **Outdoor:** 200 ~ 400 m, **Indoor:** 100 m

Certification: FCC, CE, Wi-Fi Certified

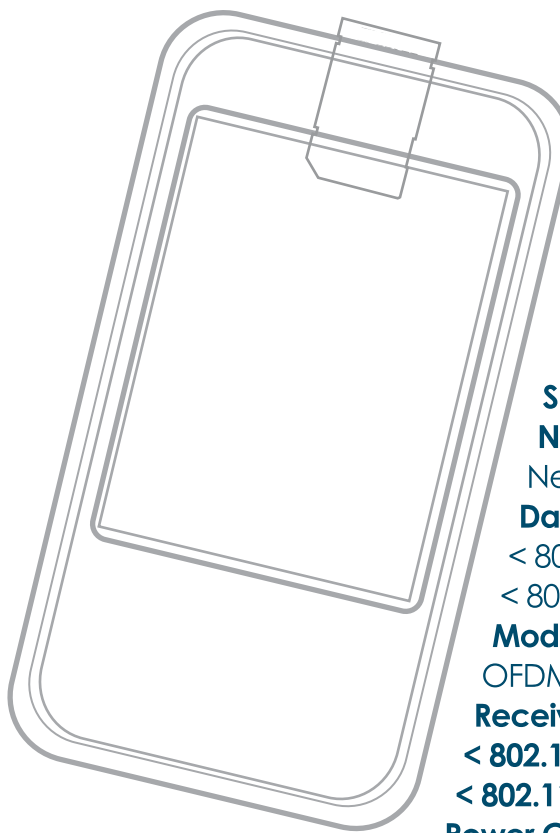
Dimension: 28 mm x 20 mm x 1.4 mm

Weight: Aprox. 1.5 g

*All specifications are subject to change without prior notice.



SDW-821 SDIO WLAN-11b/g Card



Specifications

Network Standard Support: IEEE 802.11b/g
Network Architectures: Infrastructure, Ad-Hoc

Data Rates:

< 802.11g: 6, 9, 12, 18, 24, 36, 48, 54 Mbps

< 802.11b: 1, 2, 5.5, 11 Mbps

Modulation Techniques: BPSK, QPSK, 16QAM, 64QAM, CCK, OFDM, DSSS

Receiver Sensitivity:

< **802.11g:** 73~91 dBm

< **802.11b:** 89~97 dBm

Power Consumption: Avg. Operating 138mA

Supply Voltage: I/O: 3.0 - 3.6 Vdc

Operating Temperature: 0.C to +70.C; <95% humidity

Host Interface: SDIO

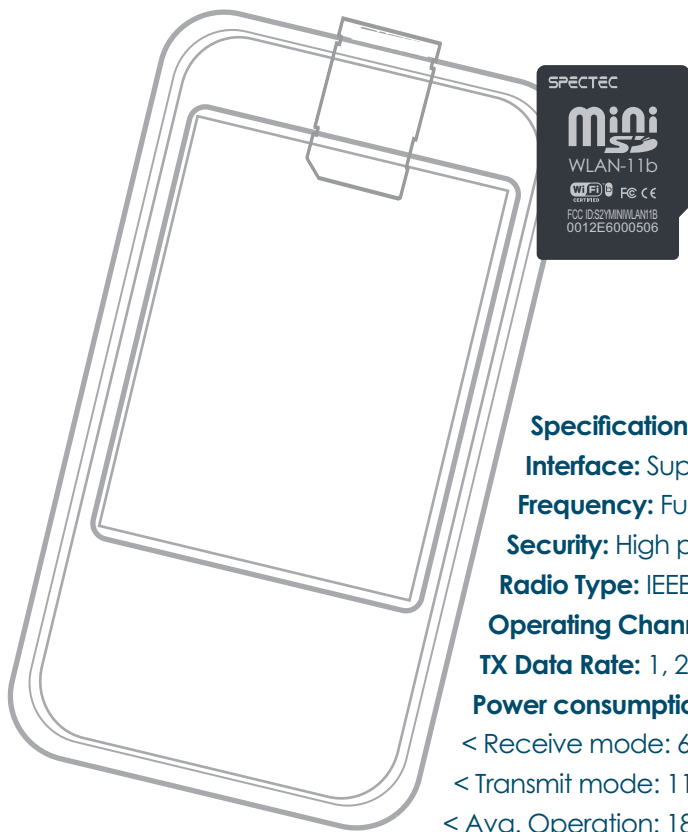
OS Support: Microsoft Windows CE 4.2, 5.0, Windows

Mobile 2003 or above (for PPC & Smartphone) /

Linux V2.4.18 on samsung 2410/2440

Dimension: 38.3 x 24 x 2.1 mm

*All specifications are subject to change without prior notice



SDW-822 SDIO WLAN-11b Card

Specifications

Interface: Support SDIO 1.0

Frequency: Fully integrated, 2.4 GHz band direct conversion transceiver

Security: High performance engine for WEP, WPA, TKIP and AES support

Radio Type: IEEE 802.11b support DSSS system

Operating Channels: 1~14 channels

TX Data Rate: 1, 2, 5.5, 11 Mbps Data Rate

Power consumption:

< Receive mode: 60 mA

< Transmit mode: 116 mA for 15 dBm Pout

< Avg. Operation: 188 mA

Support:

< STA (Ad-hoc and infrastructure) and AP mode

< DCF/PCF

OS Support: Microsoft Windows CE 4.2, 5.0, Windows Mobile 2003 or above (for PPC & Smartphone)

Operating Voltage: 3.0 V ~ 3.5 V

Operating Range: Outdoor: 200 ~ 400 m, Indoor: 100 m

Certification: FCC, CE, Wi-Fi Certified

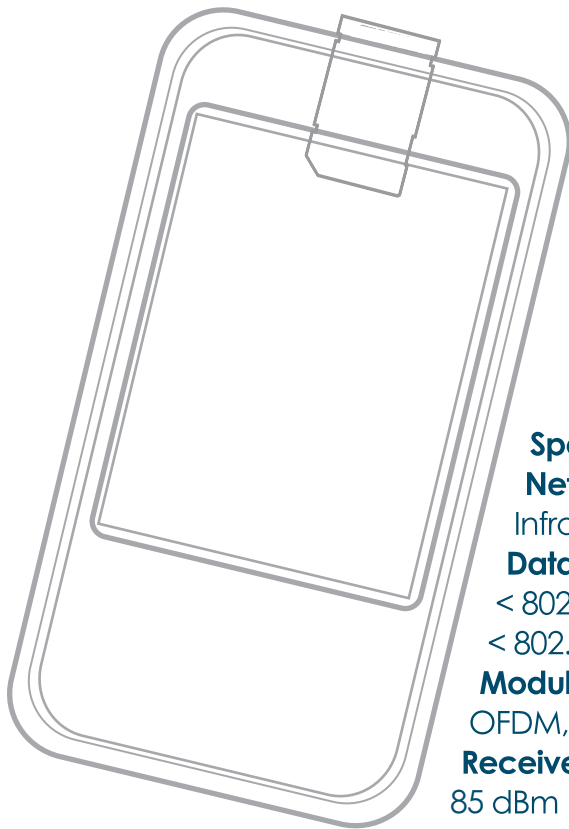
Dimension: 28 mm x 20 mm x 1.4 mm

Weight: Aprox. 1.5 g

*All specifications are subject to change without prior notice.



SDW-823 Micro SDIO WLAN-11b/g Card



Specifications

Network Standard Support: IEEE 802.11b/g
Infrastructure, Ad-Hoc

Data Rates:

< 802.11g: 6, 9, 12, 18, 24, 36, 48, 54 Mbps

< 802.11b: 1, 2, 5.5, 11 Mbps

Modulation Techniques: BPSK, QPSK, 16QAM, 64QAM, CCK,
OFDM, DSSS

Receiver Sensitivity:

85 dBm

Power Consumption: Receive 150 mA

Supply Voltage: DC 3.0 V - 6.0 V

Operating Temperature: -45 °C to +85 °C

Host Interface: Micro SDIO

OS Support: Windows Mobile 5.0/6.0

Dimension: 22 x 11 x 1 mm

*All specifications are subject to change without prior notice



SDW-825 Mini SDIO WLAN-11b/g Card

Specifications

Network Standard Support: IEEE 802.11b/g
Infrastructure, Ad-Hoc

Data Rates:

< 11g mode: 6, 9, 12, 18, 24, 36, 48, 54 Mbps

< 11b mode: 1, 2, 5.5, 11 Mbps

Modulation Techniques: BPSK, QPSK, 16QAM, 64QAM, CCK,
OFDM, DSSS

Receiver Sensitivity:

<802.11g: 73-91dBm

<802.11b: 89-97dBm

Power Consumption:

< Avg Operating: 90~100mA

<Sleep Mode: 50uA

Supply Voltage:DC 3.0 V - 6.0 V

Operating Temperature: 0 °C to +70 °C

OS Support: PPC 2003SE / WM5.0 / WM6.0(for PDA & Smartphone)

Dimension: 28 x 20 x 1.4 mm

*All specifications are subject to change without prior notice



NOTE: The changes or modifications not expressly approved by the party responsible for compliance could void the user's authority to operate the equipment.

To comply with the FCC RF exposure compliance requirements, this device and its antenna must not be co-located or operating to conjunction with any other antenna or transmitter.

FCC INFORMATION

The Federal Communication Commission Radio Frequency Interference Statement includes the following paragraph:

The equipment has been tested and found to comply with the limits for a Class B Digital Device, pursuant to part 15 of the FCC Rules. These limits are designed to provide reasonable protection against harmful interference in a residential installation. This equipment generates, uses and can radiate radio frequency energy and, if not installed and used in accordance with the instruction, may cause harmful interference to radio communication. However, there is no grantee that interference will not occur in a particular installation. If this equipment dose cause harmful interference to radio or television reception, which can be determined by turning the equipment off and on, the user is encouraged to try to correct the interference by one or more of the following measures:

- Reorient or relocate the receiving antenna.
- Increase the separation between the equipment and receiver.
- Connect the equipment into an outlet on a circuit different from that to which the receiver is connected.
- Consult the dealer or an experienced radio/TV technician for help.

This device complies with Part 15 of the FCC Rules. Operation is subject to the following two conditions: (1) this device may not cause harmful interference, and (2) this device must accept any interference received, including interference that may cause undersired operation.



Thank You for Purchasing Spectec's Products

