

WiFi-SD Card Operating Instruction

1. Plug WiFi-SD card into SD socket of Digital Still Camera.
2. Turn on digital still camera power, two beeper sounds will come out in 5 seconds, it's an indicator of WiFi-SD card boots-up successfully.
3. To establish Peer to Peer(P2P) WiFi connection between WiFi SD card and other WiFi devices such as PC, another DSC loaded with WiFi SD card or Smart phone, pls. take below actions:
 - a. Enter "viewing still images mode" of DSC.
 - b. Seek below image with forward or backward control keypad of digital still camera.

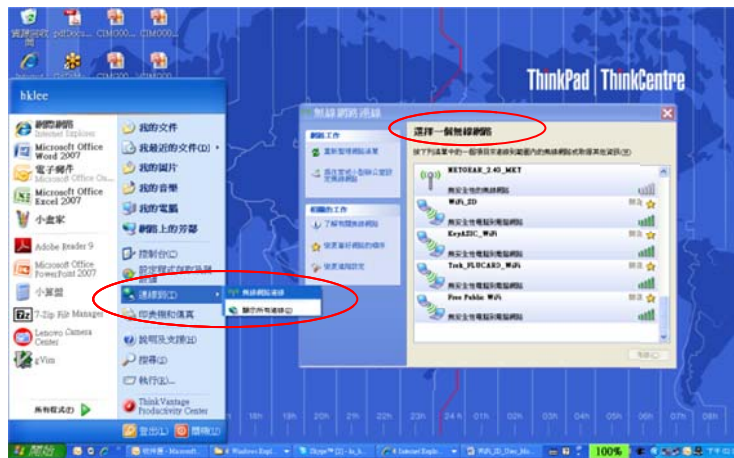


- c. Remove above image with DSC's "delete image" procedures.
- d. A series beeper sounds will come out after delete this specific image picture.
- e. WiFi function of WiFi SD card is turned on after beeper sounds stop.

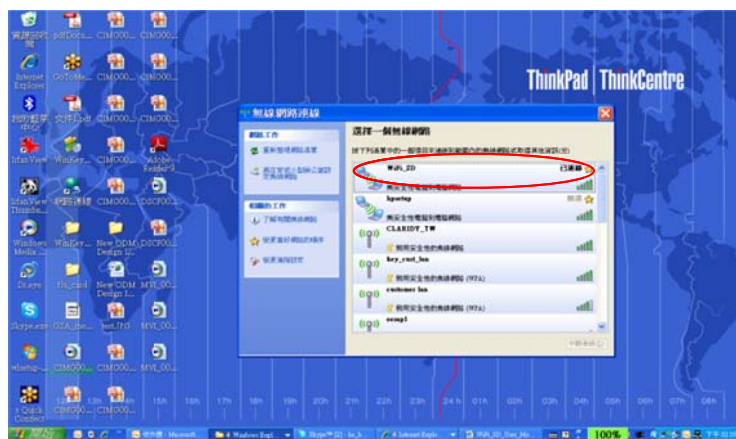
3-1 The WiFi SD card now is ready to connect with other WiFi devices at "Peer-to-Peer" mode for data exchange with following operation methods":

3-1-1 Connect to PC with WiFi connectivity -

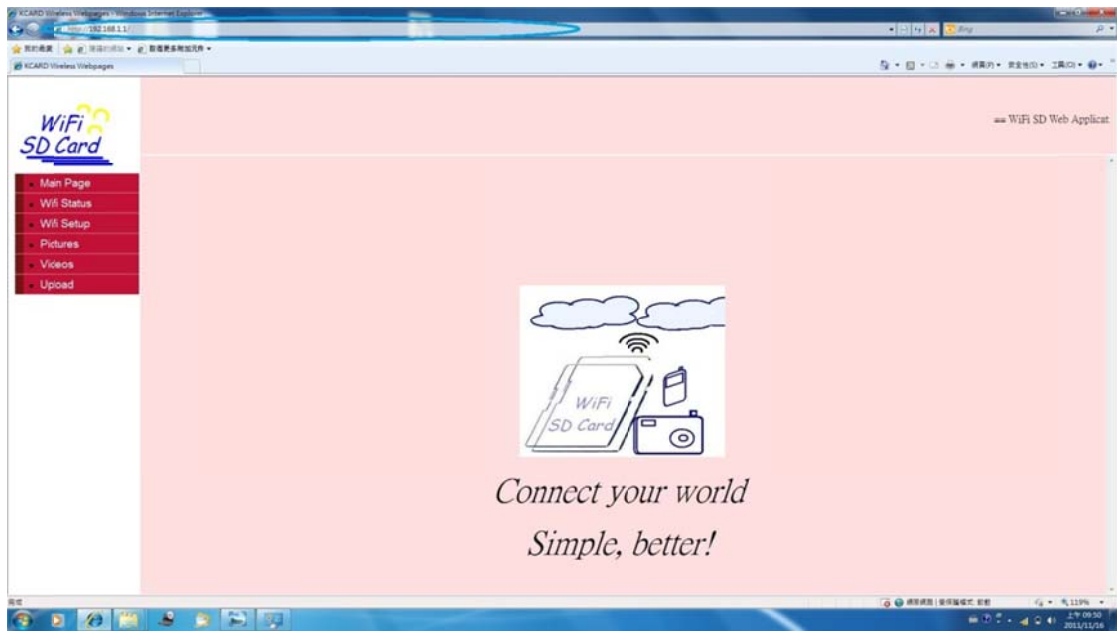
Click "Start" -> "Connect to" -> "WiFi connectivity" -> "Select a WiFi Network"



Double click "WiFi_SD" ID within WiFi Network Selection Menu and wait PC to show "connected" mark



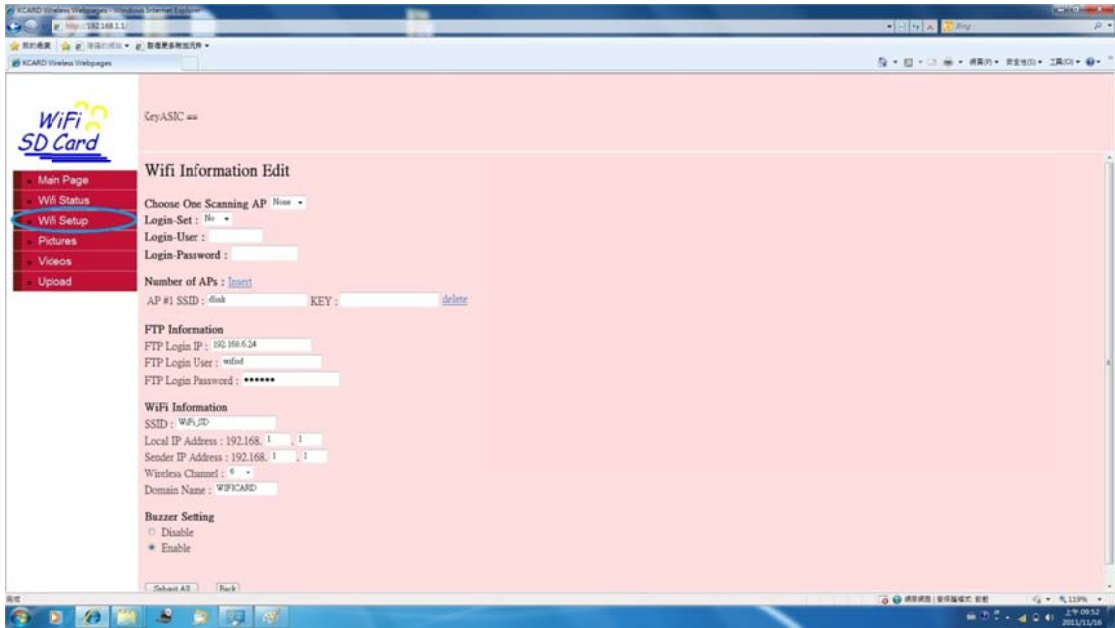
Open IE on PC and key-in web address of <http://192.168.1.1> to view/download/upload image or video files to and from DSC to PC



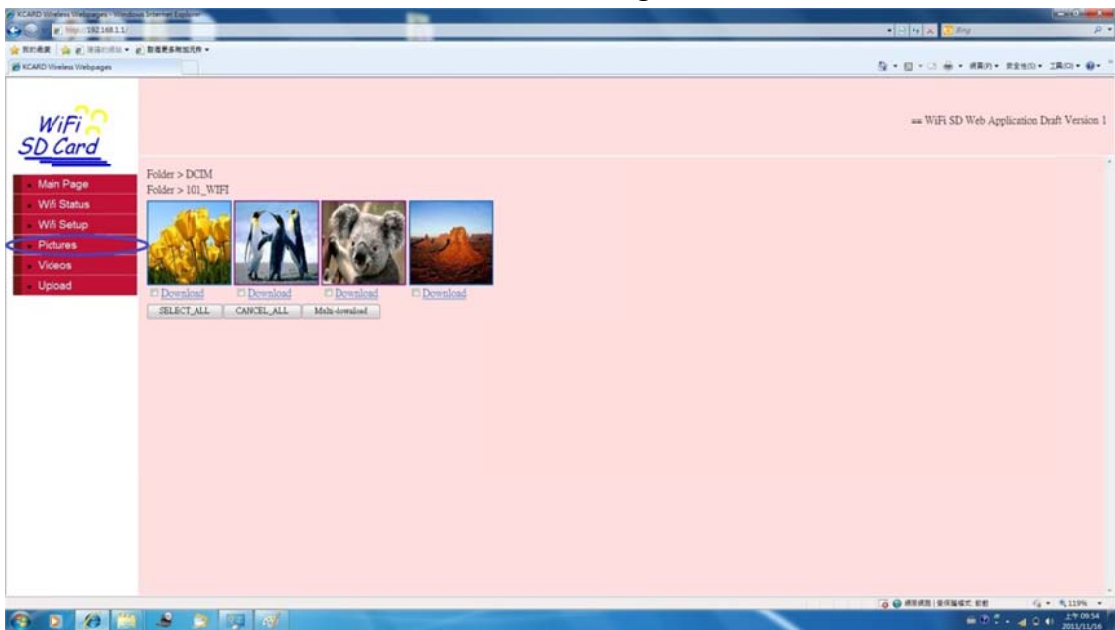
In the web page, click "Status" to get WiFi connection information



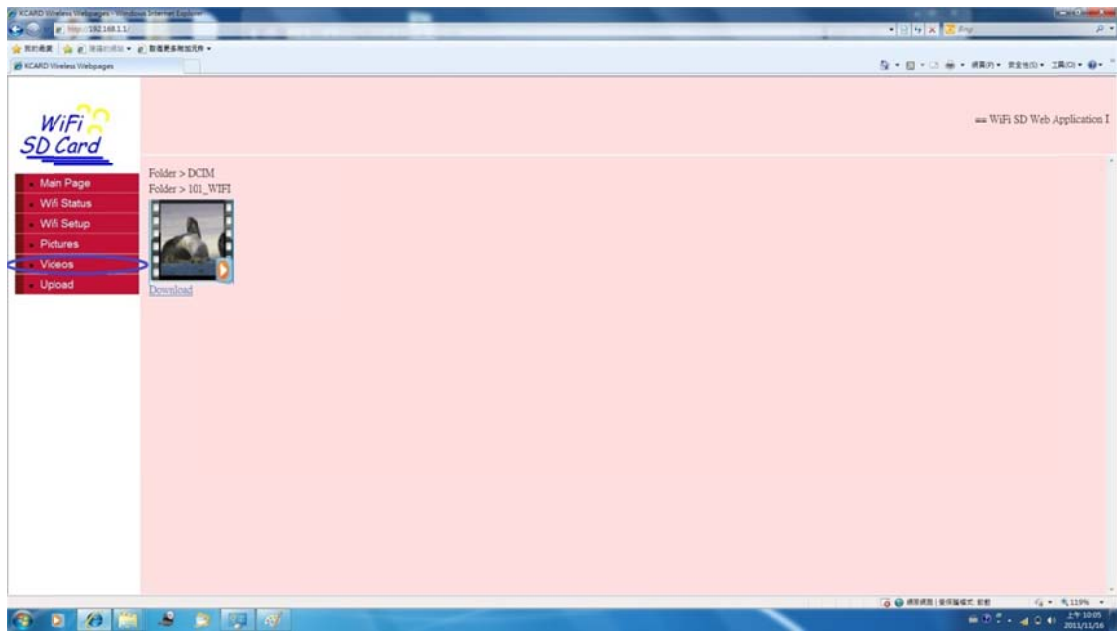
Click "Quick Setup" to define SSID & ftp account information for server upload utilization mode



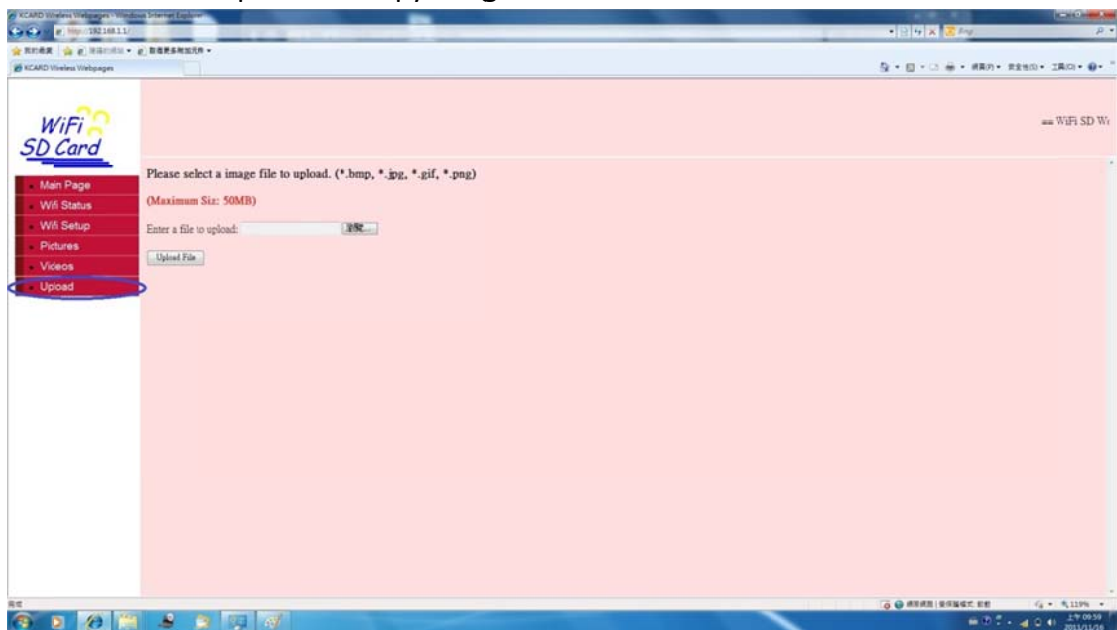
Click "Photo" to view & down load image files from DSC to PC



Click "Video" to view, playback and download video files from DSC to PC



Click “Upload” to copy image files from PC to DSC



4. To upload image or video files to remote server via Access Point(AP), pls. take below actions:

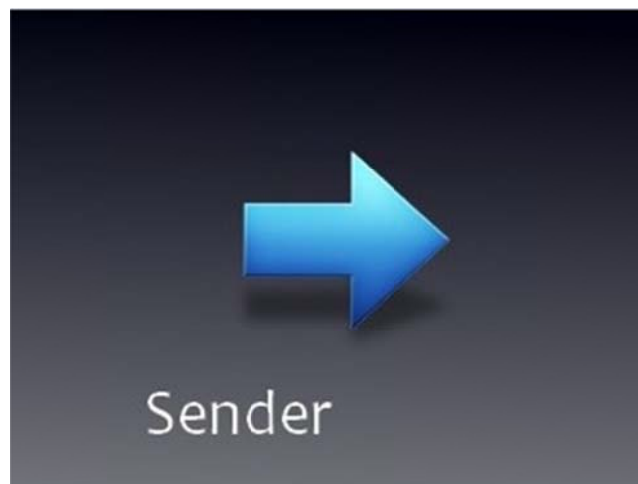
- a. Enter “viewing still images mode” of DSC.
- b. Seek below image with forward or backward control keypad of digital still camera.



- c. Remove above image with DSC's "delete image" procedures.
- d. A series beeper sounds will come out after delete this specific image picture.
- e. WiFi function of WiFi SD card is turned on after beeper sounds stop.
- f. DSC will start uploading all image files stored in WiFi SD card to remote server, the image file which has existed in server will NOT be transmitted again.

5. To send image or video files from WiFi SD card over to the other digital still camera loaded by WiFi SD card, too:

- a. Enter "viewing still images mode" of DSC.
- b. Seek below image with forward or backward control keypad of digital still camera.



- c. Remove above image with DSC's "delete image" procedures.
- d. In the other digital still camera loaded by WiFi SD card, enter "viewing still images mode" of DSC.
- e. Seek below image with forward or backward control keypad of digital still camera.



- f. Remove above image with DSC's "delete image" procedures, the DSC in "send" mode will start transmitting files to the other DSC in "receive" mode.

© Key ASIC. All rights reserved. Information in this document is subject to change without notice.

Federal Communications Commission (FCC) Statement

15.21

You are cautioned that changes or modifications not expressly approved by the part responsible for compliance could void the user's authority to operate the equipment.

15.105(b)

This equipment has been tested and found to comply with the limits for a Class B digital device, pursuant to part 15 of the FCC rules. These limits are designed to provide reasonable protection against harmful interference in a residential installation. This equipment generates, uses and can radiate radio frequency energy and, if not installed and used in accordance with the instructions, may cause harmful interference to radio communications. However, there is no guarantee that interference will not occur in a particular installation. If this equipment does cause

harmful interference to radio or television reception, which can be determined by turning the equipment off and on, the user is encouraged to try to correct the interference by one or more of the following measures:

- Reorient or relocate the receiving antenna.
- Increase the separation between the equipment and receiver.
- Connect the equipment into an outlet on a circuit different from that to which the receiver is connected.
- Consult the dealer or an experienced radio/TV technician for help.

This device complies with Part 15 of the FCC Rules. Operation is subject to the following two conditions:

- 1) this device may not cause **harmful** interference and
- 2) this device must accept any interference **received**, including interference that may cause undesired operation of the device.

FCC RF Radiation Exposure Statement:

This equipment complies with FCC radiation exposure limits set forth for an uncontrolled environment. End users must follow the specific operating instructions for satisfying RF exposure compliance. This transmitter must not be co-located or operating in conjunction with any other antenna or transmitter.