



Exhibit 11: Class II Permissive Change SAR Test Report IHDT56FQ1

Date of test: 11/01/2005 through 11/07/2005 and 10/17/2006 through 10/23/2006
Date of Report: 24 October, 2006 *Updated on 10/24/2006 to include the SAR data for WiFi Accessory*

Laboratory: Motorola Mobile Devices Business Product Safety & Compliance Laboratory
 600 N. US Highway 45
 Room: MW113
 Libertyville, Illinois 60048

Test Responsible: Steven Hauswirth
 Principal Staff Engineer

Accreditation: This laboratory is accredited to ISO/IEC 17025-1999 to perform the following tests:



<p><u>Tests:</u> Electromagnetic Specific Absorption Rate</p> <p>Simulated Tissue Preparation RF Power Measurement</p>	<p><u>Procedures:</u> ANSI/IEEE C95.1-1992, 1999 (SAR) IEEE C95.3-1991 IEEE 1528, IEC 62209-1 FCC OET Bulletin 65 (including Supplements A, B, C) Australian Communications Authority Radio Communications (Electromagnetic Radiation – Human Exposure) Standard 1999 CENELEC EN 50361 (2001) APP-0247 DOI-0876, 0900, 0902, 0904, 0915</p>
--	---

On the following products or types of products:
 Wireless Communications Devices (Examples): Two Way Radios; Portable Phones (including Cellular, Licensed Non-Broadcast and PCS); Low Frequency Readers; and Pagers

A2LA certificate #1651-01

Statement of Compliance: Motorola declares under its sole responsibility that portable cellular telephone FCC ID IHDT56FQ1 to which this declaration relates, is in conformity with the appropriate General Population/Uncontrolled RF exposure standards, recommendations and guidelines (FCC 47 CFR §2.1093). It also declares that the product was tested in accordance with the appropriate measurement standards, guidelines and recommended practices. Any deviations from these standards, guidelines and recommended practices are noted below:

(none)

©Motorola, Inc. 2006

This test report shall not be reproduced except in full, without written approval of the laboratory.

The results and statements contained herein relate only to the items tested. The names of individuals involved may be mentioned only in connection with the statements or results from this report.

Motorola encourages all feedback, both positive and negative, on this test report.

Table of Contents

1. INTRODUCTION3

2. DESCRIPTION OF THE DEVICE UNDER TEST.....3

2.1 Antenna description3

2.2 Device description.....4

3. TEST EQUIPMENT USED.....4

3.1 Dosimetric System4

3.2 Additional Equipment.....4

4. ELECTRICAL PARAMETERS OF THE TISSUE SIMULATING LIQUID5

5. SYSTEM ACCURACY VERIFICATION.....6

6. TEST RESULTS.....7

6.1 Head Adjacent Test Results.....8

6.2 Body Worn Test Results10

APPENDIX 1: SAR DISTRIBUTION COMPARISON FOR SYSTEM ACCURACY VERIFICATION14

APPENDIX 2: SAR DISTRIBUTION PLOTS FOR PHANTOM HEAD ADJACENT USE15

APPENDIX 3: SAR DISTRIBUTION PLOTS FOR BODY WORN CONFIGURATION16

APPENDIX 4: PROBE CALIBRATION CERTIFICATE17

APPENDIX 5: MEASUREMENT UNCERTAINTY BUDGET.....18

APPENDIX 6: PHOTOGRAPHS OF DEVICE UNDER TEST.....21

APPENDIX 7: DIPOLE CHARACTERIZATION CERTIFICATE26

1 Introduction

The Motorola Mobile Devices Business Product Safety Laboratory has performed measurements of the maximum potential exposure to the user of portable cellular phone (FCC ID IHDT56FQ1). The Specific Absorption Rate (SAR) of this product was measured. The portable cellular phone was tested in accordance with FCC OET Bulletin 65 Supplement C 01-01.

2 Description of the Device Under Test

2.1 Antenna description

Type	Internal Antenna	
Location – CDMA 800 Band	Bottom ; Rear Side	
Location – PCS 1900 Band	Upper Left Corner ; Rear Side	
Dimensions – CDMA 800 Band	Length	48 mm
	Width	17 mm
Dimensions – PCS 1900 Band	Length	17 mm
	Width	15 mm
Configuration	PIFA	

2.2 Device description

FCC ID Number	IHDT56FQ1		
Serial number	5281C085		
Mode(s) of Operation	800 CDMA	1900 CDMA	BlueTooth
Modulation Mode(s)	CDMA	CDMA	BlueTooth
Maximum Output Power Setting	26.00dBm	25.00dBm	4.00dBm
Duty Cycle	1:1	1:1	1:1
Transmitting Frequency Rang(s)	824-849MHz	1851-1909MHz	2400 - 2483.5MHz
Production Unit or Identical Prototype (47 CFR §2.908)	Identical Prototype		
Device Category	Portable		
RF Exposure Limits	General Population / Uncontrolled		

3 Test Equipment Used

3.1 Dosimetric System

The Motorola Mobile Devices Business Product Safety & Compliance Laboratory utilizes a Dosimetric Assessment System (Dasy4™ v4.5) manufactured by Schmid & Partner Engineering AG (SPEAG™), of Zurich Switzerland. All the SAR measurements are taken within a shielded enclosure. The overall RSS uncertainty of the measurement system is ±11.1% (K=1) with an expanded uncertainty of ±22.2% (K=2). The measurement uncertainty budget is given in Appendix 6. Per IEEE 1528, this uncertainty budget is applicable to the SAR range of 0.4 W/kg to 10 W/kg. The list of calibrated equipment used for the measurements is shown below.

Description	Serial Number	Cal Due Date
DASY4 DAE3	SN437	24-Mar-06
DASY4 DAE4	SN661	26-Aug-06
DASY4 DAE3	SN440	21-Feb-06
DASY4 DAE4	SN650	7-Sep-07
E-Field Probe ET3DV6R	SN1397	22-Apr-06
E-Field Probe ET3DV6R	SN1506	26-May-06
E-Field Probe ET3DV6R	SN1506	19-Jun-07
E-Field Probe ET3DV6R	SN1524	30-May-07
Dipole Validation Kit, D900V2	SN80	
S.A.M. Phantom used for 800MHz	TP-1153	
Dipole Validation Kit, D900V2	SN91	
S.A.M. Phantom used for 800MHz	TP-1005	
Dipole Validation Kit, D1800V2	SN251TR	
S.A.M. Phantom used for 1900MHz	TP-1159	
Dipole Validation Kit, D1800V2	SN259TR	
S.A.M. Phantom used for 2450MHz	TP-1235	
Dipole Validation Kit, D2450V2	SN740	

3.2 Additional Equipment

Description	Serial Number	Cal Due Date
Signal Generator HP8648C	3847A04845	8/22/2006
Signal Generator HP8648C	3847A04810	8/19/2006
Power Meter E4419B	GB39511087	12/28/2005
Power Meter E4419B	GB39511088	12/16/2005
Power Sensor #1 - 9301A	MY41495336	12/28/2005
Power Sensor #2 - 9301A	US39211007	8/29/2006
Power Sensor #1 - 9301A	US39210930	8/29/2006
Power Sensor #2 - 9301A	US39211006	8/29/2006
Network Analyzer HP8753ES	US39172529	2/21/2006
Signal Generator HP8648C	3847A04630	3/2/2007
Power Meter E4419B	US39250623	5/24/2006
Power Sensor #1 - 8481A	3318A86935	5/31/2006
Power Sensor #2 - 8481A	US37296472	5/31/2006
Network Analyzer HP8753ES	US39172714	3/7/2007
Dielectric Probe Kit HP85070B	US99360070	

4 Electrical parameters of the tissue simulating liquid

Prior to conducting SAR measurements, the relative permittivity, ϵ_r , and the conductivity, σ , of the tissue simulating liquids were measured with the HP85070 Dielectric Probe Kit. These values, along with the temperature of the tissue simulate are shown in the table below. The recommended limits for maximum permittivity and minimum conductivity are also shown. These come from the Federal Communication Commission, OET Bulletin 65 Supplement C 01-01. It is seen that the measured parameters are satisfactory for compliance testing.

<i>f</i> (MHz)	Tissue type	Limits / Measured	Dielectric Parameters		
			ϵ_r	σ (S/m)	Temp (°C)
835	Head	Measured, 11/1/2005	42.4	0.92	20.2
		Recommended Limits	41.5 ±5%	0.90 ±5%	18-25
	Body	Measured, 11/4/2005	53.9	0.98	19.6
		Measured, 12/9/2005	54.3	0.98	20.9
1880	Head	Measured, 11/3/2005	39.2	1.45	19.5
		Recommended Limits	40.0 ±5%	1.40 ±5%	18-25
	Body	Measured, 11/7/2005	51.1	1.59	20.5
		Measured, 12/12/2005	50.9	1.59	20
		Recommended Limits	53.3 ±5%	1.52 ±5%	18-25
2450	Head	Measured, 10/17/2006	37.5	1.89	19.8
		Measured, 10/22/2006	37.4	1.89	19.6
		Recommended Limits	39.2 ±5%	1.80 ±5%	18-25
	Body	Measured, 10/23/2006	54.4	2.03	20.0
		Recommended Limits	52.7 ±5%	1.95 ±5%	18-25

The list of ingredients and the percent composition used for the tissue simulates are indicated in the table below.

Ingredient	800MHz Head	800MHz Body	1900MHz Head	1900MHz Body
Sugar	57.0	44.9	--	--
DGBE	--	--	47.0	30.80
Water	40.45	53.06	52.8	68.91
Salt	1.45	0.94	0.2	0.29
HEC	1.0	1.0	--	--
Bact.	0.1	0.1	--	--

5 System Accuracy Verification

A system accuracy verification of the DASY4 v4.5 was performed using the measurement equipment listed in Section 3.1. The daily system accuracy verification occurs within center section of the SAM phantom.

A SAR measurement was performed to see if the measured SAR was within +/- 10% from the target SAR indicated in Section 8.3.7 Reference SAR Values in IEEE 1528, or Appendix 7 for the 900MHz target reference SAR value. These tests were done at 900MHz, 1800MHz. These frequencies are within 100MHz of the mid-band frequency of the test device. This is within the allowable window given in Supplement C 01-01 Appendix D System Verification section item #5. The test was conducted on the same days as the measurement of the DUT. Recommended limits for maximum permittivity, minimum conductivity are shown in the table below. These come from the Federal Communication Commission, OET Bulletin 65 Supplement C 01-01. The obtained results from the system accuracy verification are displayed in the table below. The distributions of SAR compare well with those of the reference measurements (see Appendix 1). The tissue stimulant depth was verified to be 15.0cm ±0.5cm. Z-axis scans showing the SAR penetration are also included in Appendix 1. SAR values are normalized to 1W forward power delivered to the dipole.

f (MHz)	Description	SAR (W/kg), 1gram	Dielectric Parameters		Ambient Temp (°C)	Tissue Temp (°C)
			ϵ_r	σ (S/m)		
900	Measured, 11/01/2005	11.2	41.6	0.98	22.0	20.7
	Measured, 11/04/2005	11.0	40.7	0.97	22.0	20.0
	Measured, 12/09/2005	11.0	41.3	0.97	23.0	21.0
	Recommended Limits	11.3	41.5 ±5%	0.97 ±5%	18-25	18-25
1800	Measured, 11/03/2005	37.8	39.6	1.37	23.0	19.7
	Measured, 11/07/2005	38.2	39.0	1.37	21.0	19.8
	Measured, 12/12/2005	36.4	40.2	1.34	22.0	20.2
	Recommended Limits	38.1	40.0 ±5%	1.40 ±5%	18-25	18-25
2450	Measured, 10/17/2006	55.8	37.5	1.89	21.1	19.8
	Measured, 10/22/2006	57.3	37.4	1.89	20.5	20.0
	Measured, 10/23/2006	59.5	37.9	1.89	21	19.3
	Recommended Limits	58.0	39.2 ±5%	1.80 ±5%	18-25	18-25

The following probe conversion factors were used on the E-Field probe(s) used for the system accuracy verification measurements:

Description	Serial Number	f (MHz)	Conversion Factor	Cal Cert pg #
E-Field Probe ET3DV6R	SN1397	900	6.38	8 of 9
		1800	5.17	8 of 9
E-Field Probe ET3DV6R	SN1506	900	5.89	8 of 9
		1800	4.83	8 of 9
		2450	4.49	8 of 9

6 Test Results

The test sample was operated in a test mode that allows control of the transmitter without the need to place actual phone calls. For the purposes of this test the unit is commanded to test mode and manually set to the proper channel, transmitter power level and transmit mode of operation. The phone was tested in the configurations stipulated in OET Bulletin 65 Supplement C 01-01. Motorola also followed the requirements in Supplement. C / Appendix D: SAR Measurement Procedures, section titled “Devices Operating Next To A Person’s Ear “. These directions state “The device should be tested on the left and right side of the head phantom in the “Cheek/Touch” and “Ear/Tilt” positions. When applicable, each configuration should be tested with the antenna in its fully extended and fully retracted positions. These test configurations should be tested at the high, middle and low frequency channels of each operating mode; for example, AMPS, CDMA, and TDMA. If the SAR measured at the middle channel for each test configuration (left, right, Cheek/Touch, Tile/Ear, extended and retracted) is at least 2.0 dB lower than the SAR limit, testing at the high and low channels is optional for such test configuration(s).“

The DASY4 v4.5 SAR measurement system specified in section 3.1 was utilized within the intended operations as set by the SPEAG™ setup. The phone was positioned into the measurement configurations using the positioner supplied with the DASY4 v4.5 SAR measurement system. The measured dielectric constant of the material used for the positioner is less than 2.9 and the loss tangent is less than 0.02 (± 30%) at 850MHz. The default settings for the “coarse” and “cube” scans were chosen and use for measurements. The grid spacing of the course scan was set to 15cm as shown in the SAR plots included in appendix 2 and 3. Please refer to the DASY manual for additional information on SAR scanning procedures and algorithms used.

The Cellular Phone (FCC ID IHDT56FQ1) has the following battery options:
 Model #1 – SNN5765A - 1640mAH Battery
 Model #2 – SNN5783A - 1130mAH Battery

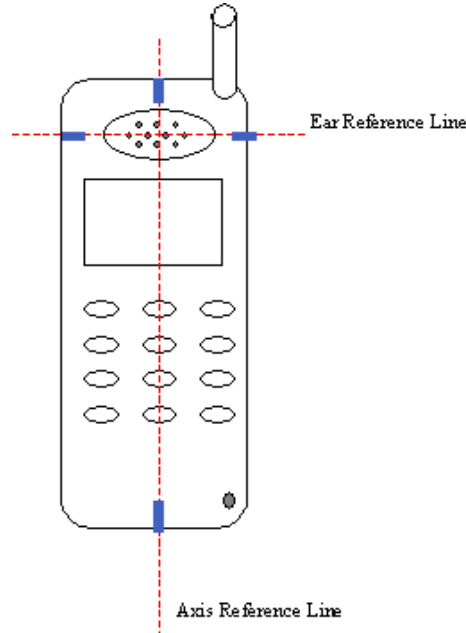
The battery with the highest capacity is the SNN5765A. This battery was used to do most of the SAR testing. The phone was placed in the SAR measurement system with a fully charged battery. The configuration that resulted in the highest SAR values were tested using the other batteries listed above.

Per the “Preliminary Guidance for Reviewing Applications for Certifications of 3G Devices” released on May 9, 2006, RC1, RC3 and RC3 (FCH + SCH) CDMA modes were considered. The conducted power measurements (per steps 3, 4 & 10 of section 4.4.5.2 of 3GPP2 C.5.011 / TIA -98-E) show that the portable cellular phone FCC ID IHDT56FQ1 has the same output conducted power for both CDMA modes.

		Conducted power (dBm) for CDMA modes		
		RC1	RC3	RC3 (FCH + SCH)
CDMA 800	Ch 1013	26.3	26.4	Per Motorola designs; the maximum power, when in a mode that allows supplemental channels, will always be less than the RC3 / RC1 maximum conducted power limit.
	Ch 384	26.2	26.5	
	Ch 777	26.1	26.3	
CDMA 1900	Ch 25	25.2	25.3	
	Ch 600	25.2	25.1	
	Ch 1175	25.2	25.2	

6.1 Head Adjacent Test Results

To aid in positioning repeatability, the ear reference line of the device and the axis reference line of the device have been physically added using a non-metallic marker. Per Figure 1, the "Ear Reference Line" is centered vertically through the center of the listening area (as defined by the speaker holes in the housing). The "Axis Reference Line" bisects the front surface of the device at its top and bottom edges. The intersection of these two lines defines the location of the "Ear Reference Point". The lines drawn on the device extended to the outside edges, as shown in blue in the figure below, & wrap around the sides of the device.



The SAR results shown in tables 1 through 4 are maximum SAR values averaged over 1 gram of phantom tissue. Also shown are the measured conducted output powers, the temperature of the test facility during the test, the temperature of the tissue simulate after the test, the measured drift and the extrapolated SAR. The exact method of extrapolation is $\text{New SAR} = \text{Old SAR} * 10^{(-\text{drift}/10)}$. The SAR reported at the end of the measurement process by the DASY™ measurement system can be scaled up by the measured drift to determine the SAR at the beginning of the measurement process. This is the most conservative SAR because it corresponds to the average output power at the beginning of the SAR test. This extrapolation has been done because when the DUT is operating properly it may exhibit a slump in radiated power and SAR over time. This is verified by measuring the SAR drift after the test.

The left head and right head SAR contour distributions are similar. Because of this similarity, the cheek/touch and 15° tilt test conditions with the highest SAR values in each band are indicated as bold numbers in the following tables and are included in Appendix 2. All other test conditions measured lower SAR values than those included in Appendix 2.

The SAR measurements were performed using the SAM phantoms listed in section 3.1. Since the same phantoms and tissue simulate are used for the system accuracy verification as the device SAR measurements, the Z-axis scans included in within Appendix 1 are applicable for verification of tissue simulate depth to be 15.0cm ±0.5cm. Note that 800MHz digital mode SAR measurements were performed in accordance with Supplement C.

The following probe conversion factors were used on the E-Field probe(s) used for the head adjacent measurements:

Description	Serial Number	f (MHz)	Conversion Factor	Cal Cert pg #
E-Field Probe ET3DV6R	SN1397	900	6.38	8 of 9
		1800	5.17	8 of 9
E-Field Probe ET3DV6R	SN1506	900	5.89	8 of 9
		1800	4.83	8 of 9
		2450	4.49	8 of 9

f (MHz)	Description	Conducted Output Power (dBm)	Cheek / Touch Position							
			Left Head				Right Head			
			Measured (W/kg)	Drift (dB)	Extrapolated (W/kg)	Simulate Temp (°C)	Measured (W/kg)	Drift (dB)	Extrapolated (W/kg)	Simulate Temp (°C)
Digital 800MHz	Channel 1013	26.13	0.807	-0.31	0.87	20.2	0.853	0.1	0.85	20.1
	Channel 384	26.11	0.83	-0.07	0.84	20.2	0.878	0.2	0.88	20.2
	Channel 777	25.84	0.763	0.11	0.76	20.2	0.821	-0.29	0.88	20.1
Digital 1900MHz	Channel 25	25.10								
	Channel 600	25.09	0.605	0.15	0.61	19.5	0.734	-0.26	0.78	19.5
	Channel 1175	25.12								
WiFi	Channel 1	9.19								
	Channel 6	9.15	0.089	-0.20	0.09	19.6	0.203	-0.02	0.20	19.8
	Channel 11	8.99								
CDMA + WiFi	Highest Summation of extrapolated SAR Values			0.96					1.08	

Table 1: SAR measurement results for the portable cellular telephone FCC ID IHDT56FQ1 at highest possible output power. Measured against the head in the Cheek/Touch Position.

f (MHz)	Description	Conducted Output Power (dBm)	15° Tilt Position							
			Left Head				Right Head			
			Measured (W/kg)	Drift (dB)	Extrapolated (W/kg)	Simulate Temp (°C)	Measured (W/kg)	Drift (dB)	Extrapolated (W/kg)	Simulate Temp (°C)
Digital 800MHz	Channel 1013	26.13								
	Channel 384	26.11	0.589	0.06	0.59	20.2	0.545	0.05	0.55	20.2
	Channel 777	25.84								
Digital 1900MHz	Channel 25	25.1	0.639	0.2	0.64	19.5	0.67	0.18	0.67	19.5
	Channel 600	25.09	0.805	0.07	0.81	19.5	0.855	0.14	0.86	19.5
	Channel 1175	25.12	1.05	-0.12	1.08	19.5	1.03	-0.32	1.11	19.5
WiFi	Channel 1	9.19								
	Channel 6	9.15	0.0982	5.63	0.10	19.8	0.113	-0.14	0.12	19.6
	Channel 11	8.99								
CDMA + WiFi	Highest Summation of extrapolated SAR Values			1.18					1.23	

Table 2: SAR measurement results for the portable cellular telephone FCC ID IHDT56FQ1 at highest possible output power. Measured against the head in the 15° Tilt Position.

f (MHz)	Description	Conducted Output Power (dBm)	Cheek/Touch Position With SNN5783A battery								
			Left Head				Right Head				
			Measured (W/kg)	Drift (dB)	Extrapolated (W/kg)	Simulate Temp (°C)	Measured (W/kg)	Drift (dB)	Extrapolated (W/kg)	Simulate Temp (°C)	
Digital 800MHz	Channel 1013	26.13									
	Channel 384	26.11									
	Channel 777	25.84					0.827	-0.15	0.86	20.2	
Digital 1900MHz	Channel 25	25.1									
	Channel 600	25.09					0.729	-0.06	0.74	19.5	
	Channel 1175	25.12									
WiFi	Channel 1	9.19									
	Channel 6	9.15					0.194	0.414	0.19	19.6	
	Channel 11	8.99									
CDMA + WiFi	Highest Summation of extrapolated SAR Values								1.05		

Table 3: SAR measurement results for the portable cellular telephone FCC ID IHDT56FQ1 at highest possible output power. Measured against the head in the Cheek/Touch Position.

f (MHz)	Description	Conducted Output Power (dBm)	15° Tilt Position With SNN5783A battery								
			Left Head				Right Head				
			Measured (W/kg)	Drift (dB)	Extrapolated (W/kg)	Simulate Temp (°C)	Measured (W/kg)	Drift (dB)	Extrapolated (W/kg)	Simulate Temp (°C)	
Digital 800MHz	Channel 1013	26.13									
	Channel 384	26.11	0.607	-0.2	0.64	20.2					
	Channel 777	25.84									
Digital 1900MHz	Channel 25	25.1									
	Channel 600	25.09									
	Channel 1175	25.12					0.983	-0.13	1.01	20.4	
WiFi	Channel 1	9.19									
	Channel 6	9.15					0.115	-0.03	0.12	19.6	
	Channel 11	8.99									
CDMA + WiFi	Highest Summation of extrapolated SAR Values								1.13		

Table 4: SAR measurement results for the portable cellular telephone FCC ID IHDT56FQ1 at highest possible output power. Measured against the head in the 15° Tilt Position.

6.2 Body Worn Test Results

The SAR results shown in tables 5 through 9 are the maximum SAR values averaged over 1 gram of phantom tissue. Also shown are the measured conducted output powers, the temperature of the test facility during the test, the temperature of the tissue simulate after the test, the measured drift and the extrapolated SAR. The exact method of extrapolation is $New\ SAR = Old\ SAR * 10^{(-drift/10)}$. The SAR reported at the end of the measurement process by the DASY™ measurement system can be scaled up by the measured drift to determine the SAR at the beginning of the measurement process. This is the most conservative SAR because it corresponds to the average output power at the beginning of the SAR test. This extrapolation has been done because when the DUT is operating properly it may exhibit a slump in radiated power and SAR over time. This is verified by measuring the SAR drift after the test. Note that 800MHz digital mode SAR measurements were performed in accordance with OET Bulletin 65 Supplement C 01-01.

APPLICANT: MOTOROLA, INC.

Model Name: **IHDT56FQ1**

The test conditions that produced the highest SAR values in each band are indicated as bold numbers in the following tables and are included in Appendix 3. All other test conditions measured lower SAR values than those included in Appendix 3.

A “flat” phantom was for the body-worn tests. This “flat” phantom is made out of 1” thick natural High Density Polyethylene with a thickness at the bottom equal to 2.0mm. It measures 52.7cm(long) x 26.7cm(wide) x 21.2cm(tall). The measured dielectric constant of the material used is less than 2.3 and the loss tangent is less than 0.0046 all the way up to 2.184GHz.

The tissue stimulant depth was verified to be 15.0cm ±0.5cm. The same device holder described in section 6 was used for positioning the phone. The functional accessories were divided into two categories, the ones with metal components and the ones with non-metal components. For non-metallic component accessories’, testing was performed on the accessory that displayed the closest proximity to the flat phantom. Each metallic component accessory, if any, was checked for uniqueness of metal component so that each is tested with the device. If multiple accessories shared an identical metal component, only the accessory that dictates the closest spacing to the body was tested. The cellular phone was tested with a headset connected to the device for all body-worn SAR measurements.

There is only one Body-Worn accessories available for this phone. The original filing stated there would be two Body-Worn accessories available, but the “slim holster” was cancelled prior to initial shipments of the cellular phone.

The following probe conversion factors were used on the E-Field probe(s) used for the body worn measurements:

Description	Serial Number	f (MHz)	Conversion Factor	Cal Cert pg #
E-Field Probe ET3DV6R	SN1397	900	6.22	8 of 9
		1800	4.77	8 of 9
E-Field Probe ET3DV6R	SN1506	900	5.55	8 of 9
		1800	4.30	8 of 9
		2450	3.97	8 of 9

f (MHz)	Description	Conducted Output Power (dBm)	Body Worn 15mm from phantom							
			Front				Back			
			Measured (W/kg)	Drift (dB)	Extrapolated (W/kg)	Simulate Temp (°C)	Measured (W/kg)	Drift (dB)	Extrapolated (W/kg)	Simulate Temp (°C)
Digital 800MHz	Channel 1013	26.13					0.839	0.05	0.84	20.4
	Channel 384	26.11	0.536	0.03	0.54	20.4	0.903	-0.05	0.91	20.4
	Channel 777	25.84					0.672	-0.07	0.68	20.4
Digital 1900MHz	Channel 25	25.1								
	Channel 600	25.09	0.345	0.15	0.35	20.5	0.532	-0.05	0.54	20
	Channel 1175	25.12								
WiFi	Channel 1	9.19								
	Channel 6	9.15	0.0234	-0.10	0.02	20.2	0.0474	-3.05	0.10	20.0
	Channel 11	8.99								
CDMA + WiFi	Highest Summation of extrapolated SAR Values				0.56				1.01	

Table 5: SAR measurement results for the portable cellular telephone FCC ID IHDT56FQ1 at highest possible output power. Measured against the body.

f (MHz)	Description	Conducted Output Power (dBm)	Body Worn 15mm from phantom With Bluetooth							
			Front				Back			
			Measured (W/kg)	Drift (dB)	Extrapolated (W/kg)	Simulate Temp (°C)	Measured (W/kg)	Drift (dB)	Extrapolated (W/kg)	Simulate Temp (°C)
Digital 800MHz	Channel 1013	26.13					0.985	-0.13	1.02	20.5
	Channel 384	26.11					1.03	0.05	1.03	20.5
	Channel 777	25.84					0.987	-0.09	1.01	20.5
Digital 1900MHz	Channel 25	25.1								
	Channel 600	25.09					0.468	-0.04	0.47	19.9
	Channel 1175	25.12								
WiFi	Channel 1	9.19								
	Channel 6	9.15					0.083	-0.04	0.08	20.2
	Channel 11	8.99								
CDMA + WiFi	Highest Summation of extrapolated SAR Values								1.11	

Table 6: SAR measurement results for the portable cellular telephone FCC ID IHDT56FQ1 at highest possible output power. Measured against the body.

f (MHz)	Description	Conducted Output Power (dBm)	Body Worn 15mm from phantom With Battery SNN5783A							
			Bluetooth				Back			
			Measured (W/kg)	Drift (dB)	Extrapolated (W/kg)	Simulate Temp (°C)	Measured (W/kg)	Drift (dB)	Extrapolated (W/kg)	Simulate Temp (°C)
Digital 800MHz	Channel 1013	26.13	1.25	-0.01	1.25	20.5				
	Channel 384	26.11	1.32	0	1.32	20.5				
	Channel 777	25.84	1.18	-0.17	1.23	20.5				
Digital 1900MHz	Channel 25	25.1								
	Channel 600	25.09					0.663	0.07	0.66	19.9
	Channel 1175	25.12								
WiFi	Channel 1	9.19								
	Channel 6	9.15	0.0451	0.03	0.05	20.2	0.0451	0.03	0.05	20.2
	Channel 11	8.99								
CDMA + WiFi	Highest Summation of extrapolated SAR Values				1.37				0.71	

Table 7: SAR measurement results for the portable cellular telephone FCC ID IHDT56FQ1 at highest possible output power. Measured against the body.

f (MHz)	Description	Conducted Output Power (dBm)	Body Worn Back of Phone With Wide Holster and Battery SNN5783A							
			Phone on Holster Rotated 90° Clockwise				Phone on Holster Rotated 90° Counter-Clockwise			
			Measured (W/kg)	Drift (dB)	Extrapolated (W/kg)	Simulate Temp (°C)	Measured (W/kg)	Drift (dB)	Extrapolated (W/kg)	Simulate Temp (°C)
Digital 800MHz	Channel 1013	26.13								
	Channel 384	26.11	1.18	0.07	1.18	19.2				
	Channel 777	25.84								
Digital 1900MHz	Channel 25	25.1								
	Channel 600	25.09					0.686	-0.15	0.71	19.0
	Channel 1175	25.12								
WiFi	Channel 1	9.19								
	Channel 6	9.15	0.053	-0.49	0.06	20.0	0.0932	-0.15	0.10	20.0
	Channel 11	8.99								
CDMA + WiFi	Highest Summation of extrapolated SAR Values				1.24				0.81	

Table 9: SAR measurement results for the portable cellular telephone FCC ID IHDT56FQ1 at highest possible output power. Measured against the body.

f (MHz)	Description	Conducted Output Power (dBm)	Body Worn – EVDO Rev O Mode			
			Back of phone 25 mm away from phantom			
			Measured (W/kg)	Drift (dB)	Extrapolated (W/kg)	Simulate Temp (°C)
Digital 800MHz	Channel 1013	26.13				
	Channel 384	26.11	1.39	-0.03	1.4	20.9
	Channel 777	25.84				
Digital 1900MHz	Channel 25	25.10	0.75	-0.06	0.76	20.0
	Channel 600	25.09	0.86	-0.19	0.90	20.6
	Channel 1175	25.12	1.06	-0.24	1.12	20.0

Table 10: SAR measurement results for the portable cellular telephone FCC ID IHDT56FQ1 at highest possible output power. Measured against the body.

Appendix 1

SAR distribution comparison for the system accuracy verification

Date/Time: 11/1/2005 8:42:01 AM

Test Laboratory: Motorola

110105 900Mhz GOOD-0.7%

DUT: Dipole 900 MHz; Type: D900V2; Serial: D900V2 - SN:080

Procedure Notes: 900 MHz System Performance Check / Dipole Sn# 80 PM1 Power = 200 mW

Sim.Temp@meas = 20.7°C Sim.Temp@SPC = 20.7°C Room Temp @ SPC = 22°C

Communication System: CW - Dipole; Frequency: 900 MHz; Channel Number: 4; Duty Cycle: 1:1

Medium: VALIDATION Only; Medium parameters used: $\sigma = 0.98$ mho/m, $\epsilon_r = 41.6$; $\rho = 1000$ kg/m³

DASY4 Configuration:

- Probe: ET3DV6R - SN1397; ConvF(6.38, 6.38, 6.38); Calibrated: 4/22/2005
- Sensor-Surface: 4mm (Mechanical Surface Detection)
- Electronics: DAE3 Sn437; Calibrated: 3/24/2005
- Phantom: R3: Sugar Water SAM; Type: SAM; Serial: TP-1153;
- Measurement SW: DASY4, V4.6 Build 19; Postprocessing SW: SEMCAD, V1.8 Build 147

Daily SPC Check/Dipole Area Scan (4x9x1):

Measurement grid: dx=15mm, dy=15mm

Maximum value of SAR (measured) = 2.04 mW/g

Daily SPC Check/0-Degree 5x5x7 Cube (5x5x7)/Cube 0:

Measurement grid: dx=8mm, dy=8mm, dz=5mm

Reference Value = 51.2 V/m; Power Drift = -0.054 dB

Peak SAR (extrapolated) = 3.26 W/kg

SAR(1 g) = 2.18 mW/g; SAR(10 g) = 1.4 mW/g

Maximum value of SAR (measured) = 2.38 mW/g

Daily SPC Check/90-Degree 5x5x7 Cube (5x5x7)/Cube 0:

Measurement grid: dx=8mm, dy=8mm, dz=5mm

Reference Value = 51.2 V/m; Power Drift = -0.054 dB

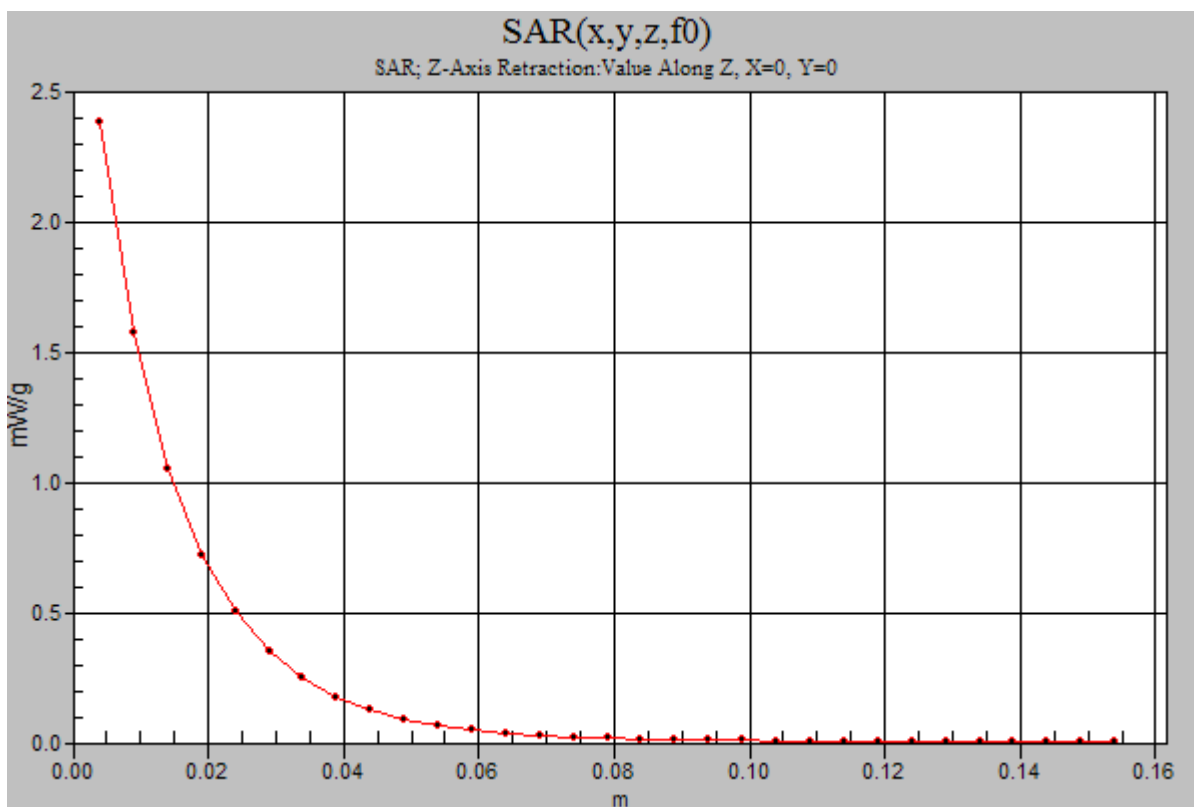
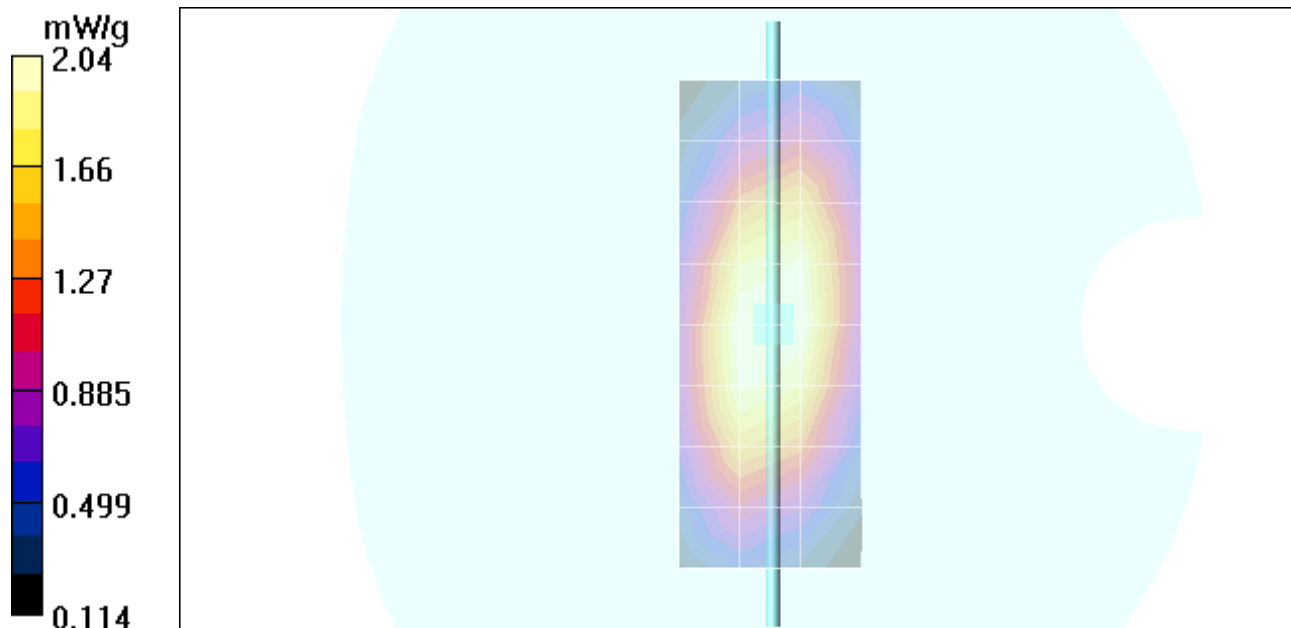
Peak SAR (extrapolated) = 3.45 W/kg

SAR(1 g) = 2.31 mW/g; SAR(10 g) = 1.48 mW/g

Maximum value of SAR (measured) = 2.51 mW/g

Daily SPC Check/Z-Axis Retraction (1x1x31):

Measurement grid: dx=20mm, dy=20mm, dz=5mm



Date/Time: 11/3/2005 6:43:20 AM

Test Laboratory: Motorola

110305 1800Mhz GOOD-0.9%

DUT: Dipole 1800 MHz; Type: D1800V2; Serial: D1800V2 - SN:251tr

Procedure Notes: 1800 MHz System Performance Check / Dipole Sn# 251tr PM1 Power = 200 mW

Sim.Temp@meas = 20.0°C Sim.Temp@SPC = 19.7°C Room Temp @ SPC = 23°C

Communication System: CW - Dipole; Frequency: 1800 MHz; Channel Number: 8; Duty Cycle: 1:1

Medium: VALIDATION Only; Medium parameters used: $\sigma = 1.37$ mho/m, $\epsilon_r = 39.6$; $\rho = 1000$ kg/m³

DASY4 Configuration:

- Probe: ET3DV6R - SN1397; ConvF(5.17, 5.17, 5.17); Calibrated: 4/22/2005
- Sensor-Surface: 4mm (Mechanical Surface Detection)
- Electronics: DAE3 Sn437; Calibrated: 3/24/2005
- Phantom: R3: Glycol SAM; Type: SAM; Serial: TP-1159;
- Measurement SW: DASY4, V4.6 Build 19; Postprocessing SW: SEMCAD, V1.8 Build 147

Daily SPC Check/Dipole Area Scan (4x9x1):

Measurement grid: dx=15mm, dy=15mm

Maximum value of SAR (measured) = 7.05 mW/g

Daily SPC Check/0-Degree 5x5x7 Cube (5x5x7)/Cube 0:

Measurement grid: dx=8mm, dy=8mm, dz=5mm

Reference Value = 82.4 V/m; Power Drift = -0.036 dB

Peak SAR (extrapolated) = 12.6 W/kg

SAR(1 g) = 7.4 mW/g; SAR(10 g) = 3.98 mW/g

Maximum value of SAR (measured) = 8.34 mW/g

Daily SPC Check/90-Degree 5x5x7 Cube (5x5x7)/Cube 0:

Measurement grid: dx=8mm, dy=8mm, dz=5mm

Reference Value = 82.4 V/m; Power Drift = -0.036 dB

Peak SAR (extrapolated) = 13.0 W/kg

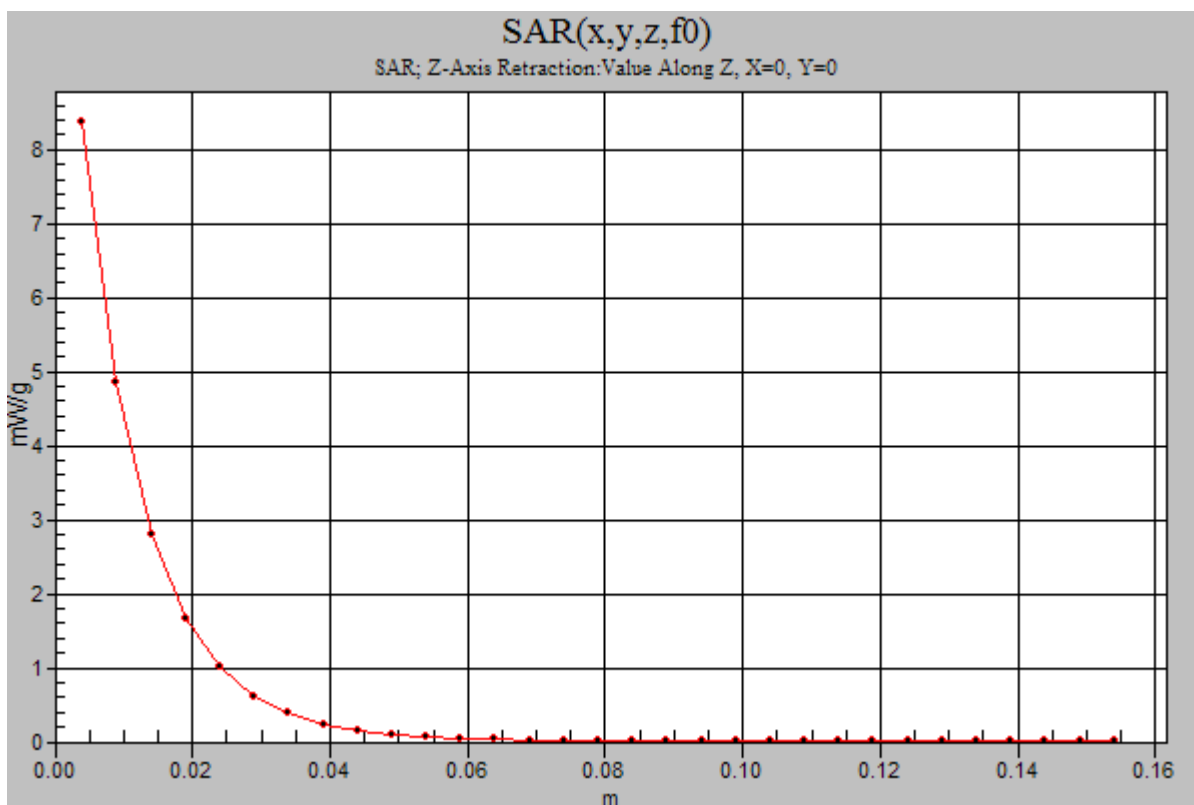
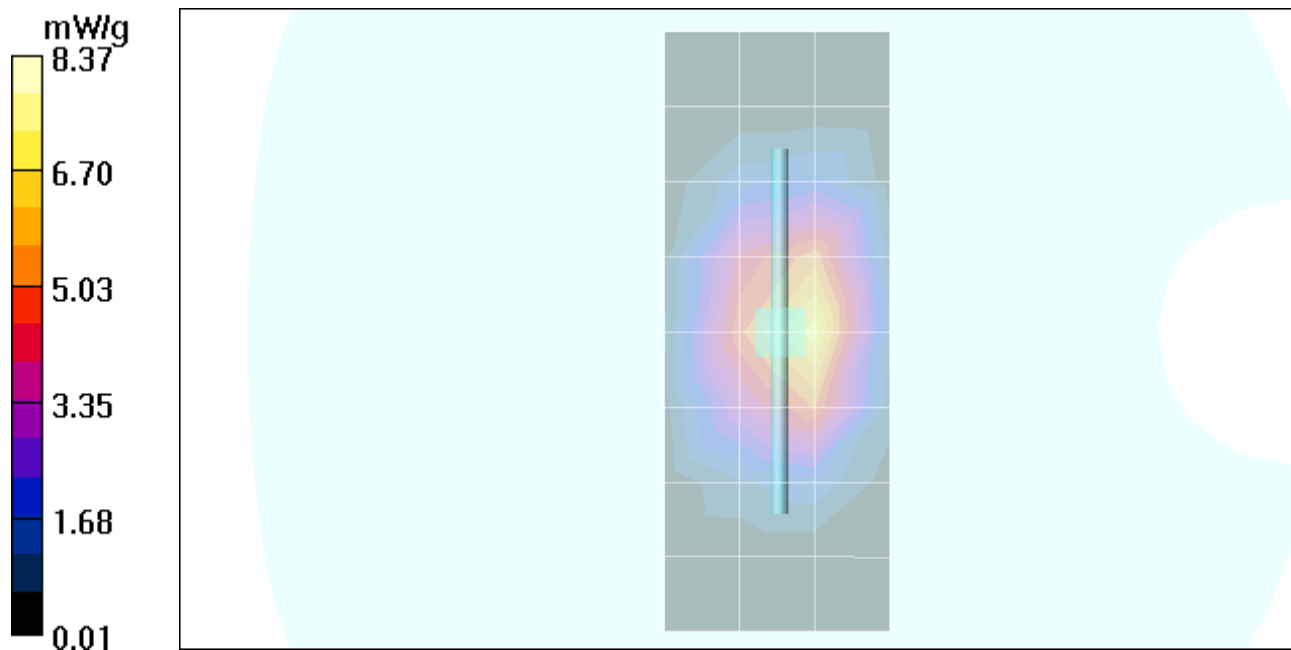
SAR(1 g) = 7.7 mW/g; SAR(10 g) = 4.14 mW/g

Maximum value of SAR (measured) = 8.64 mW/g

Daily SPC Check/Z-Axis Retraction (1x1x31):

Measurement grid: dx=20mm, dy=20mm, dz=5mm

Maximum value of SAR (measured) = 8.37 mW/g



Test Laboratory: Motorola

110405 900MHz -3.1%

DUT: Dipole 900 MHz; Type: D900V2; Serial: D900V2 - SN:091

Procedure Notes: 900MHz System Performance Check / Dipole Sn# 091 PM1 Power = 200 mW

Sim.Temp@meas = 20.7 Sim.Temp@SPC = 20.0 Room Temp @ SPC = 22

Communication System: CW - Dipole; Frequency: 900 MHz; Channel Number: 4; Duty Cycle: 1:1

Medium: VALIDATION Only; Medium parameters used: $\sigma = 0.97$ mho/m, $\epsilon_r = 40.7$; $\rho = 1000$ kg/m³

DASY4 Configuration:

- Probe: ET3DV6R - SN1506; ConvF(5.89, 5.89, 5.89); Calibrated: 5/26/2005
- Sensor-Surface: 4mm (Mechanical Surface Detection)
- Electronics: DAE4 Sn661; Calibrated: 8/26/2005
- Phantom: R1: Sugar SAM; Type: SAM; Serial: TP-1005;
- Measurement SW: DASY4, V4.6 Build 19; Postprocessing SW: SEMCAD, V1.8 Build 147

Daily SPC Check/Dipole Area Scan (4x9x1):

Measurement grid: dx=15mm, dy=15mm

Maximum value of SAR (measured) = 2.18 mW/g

Daily SPC Check/0-Degree 5x5x7 Cube (5x5x7)/Cube 0:

Measurement grid: dx=8mm, dy=8mm, dz=5mm

Reference Value = 50.4 V/m; Power Drift = -0.070 dB

Peak SAR (extrapolated) = 3.19 W/kg

SAR(1 g) = 2.16 mW/g; SAR(10 g) = 1.39 mW/g

Maximum value of SAR (measured) = 2.34 mW/g

Daily SPC Check/90-Degree 5x5x7 Cube (5x5x7)/Cube 0:

Measurement grid: dx=8mm, dy=8mm, dz=5mm

Reference Value = 50.4 V/m; Power Drift = -0.070 dB

Peak SAR (extrapolated) = 3.30 W/kg

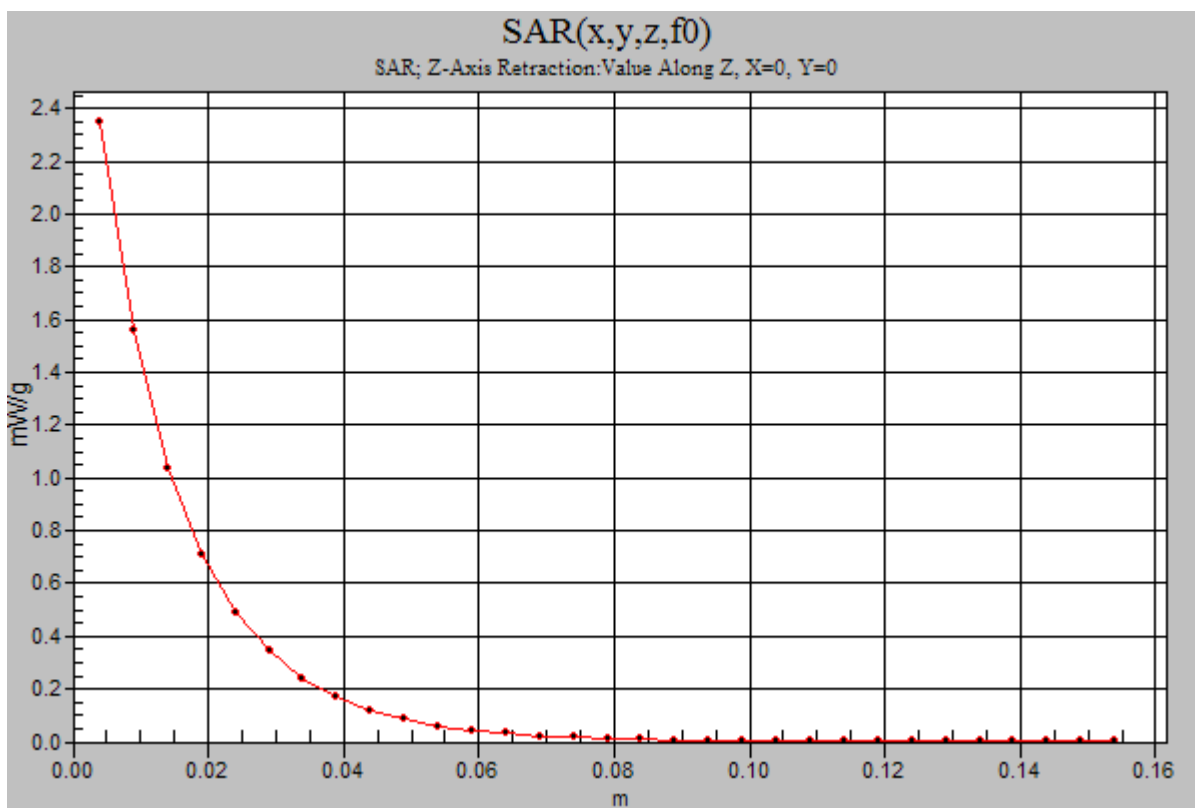
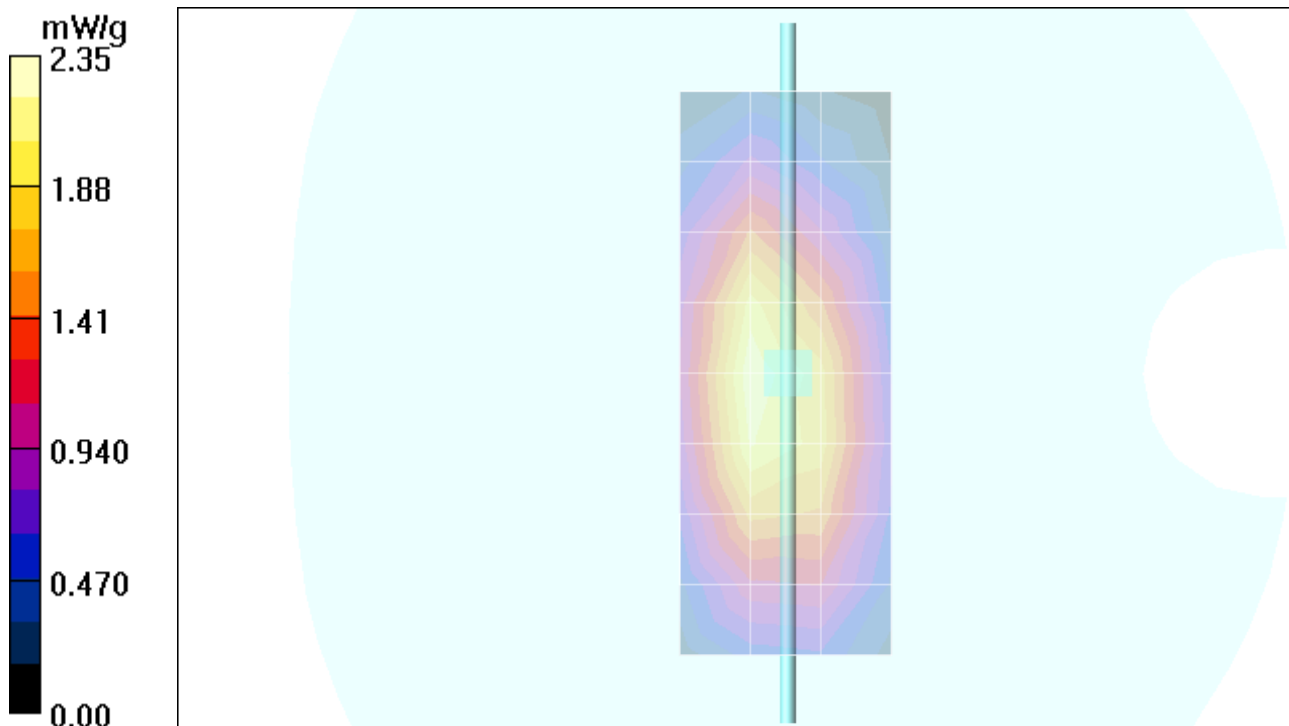
SAR(1 g) = 2.22 mW/g; SAR(10 g) = 1.43 mW/g

Maximum value of SAR (measured) = 2.33 mW/g

Daily SPC Check/Z-Axis Retraction (1x1x31):

Measurement grid: dx=20mm, dy=20mm, dz=5mm

Maximum value of SAR (measured) = 2.35 mW/g



Test Laboratory: Motorola

110705 1800MHz +0.3%

DUT: Dipole 1800 MHz; Type: D1800V2; Serial: D1800V2 - SN:259TR

Procedure Notes: 1800 MHz System Performance Check / Dipole Sn# 259TR PM1 Power = 200 mW

Sim.Temp@meas = 20.1C Sim.Temp@SPC = 19.8C Room Temp @ SPC = 21C

Communication System: CW - Dipole; Frequency: 1800 MHz; Channel Number: 8; Duty Cycle: 1:1

Medium: VALIDATION Only; Medium parameters used: $\sigma = 1.37$ mho/m, $\epsilon_r = 39$; $\rho = 1000$ kg/m³

DASY4 Configuration:

- Probe: ET3DV6R - SN1506; ConvF(4.83, 4.83, 4.83); Calibrated: 5/26/2005
- Sensor-Surface: 4mm (Mechanical Surface Detection)
- Electronics: DAE4 Sn661; Calibrated: 8/26/2005
- Phantom: R1: Sect.2, Amy Twin; Type: Amy Twin Flat; Serial: n/a;
- Measurement SW: DASY4, V4.6 Build 23; Postprocessing SW: SEMCAD, V1.8 Build 147

Daily SPC Check/Dipole Area Scan (9x4x1):

Measurement grid: dx=15mm, dy=15mm

Maximum value of SAR (measured) = 6.41 mW/g

Daily SPC Check/0-Degree 5x5x7 Cube (5x5x7)/Cube 0:

Measurement grid: dx=8mm, dy=8mm, dz=5mm

Reference Value = 84.3 V/m; Power Drift = -0.047 dB

Peak SAR (extrapolated) = 13.1 W/kg

SAR(1 g) = 7.62 mW/g; SAR(10 g) = 4.03 mW/g

Maximum value of SAR (measured) = 8.58 mW/g

Daily SPC Check/90-Degree 5x5x7 Cube (5x5x7)/Cube 0:

Measurement grid: dx=8mm, dy=8mm, dz=5mm

Reference Value = 84.3 V/m; Power Drift = -0.047 dB

Peak SAR (extrapolated) = 13.2 W/kg

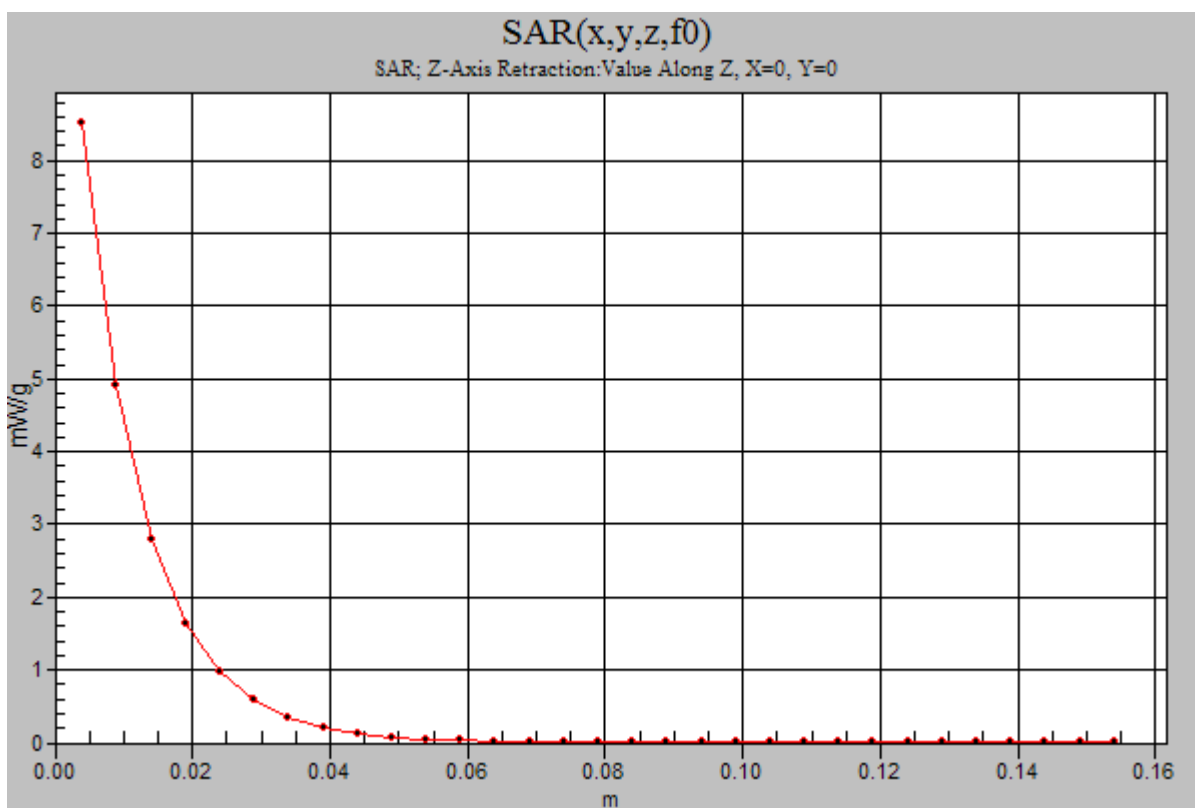
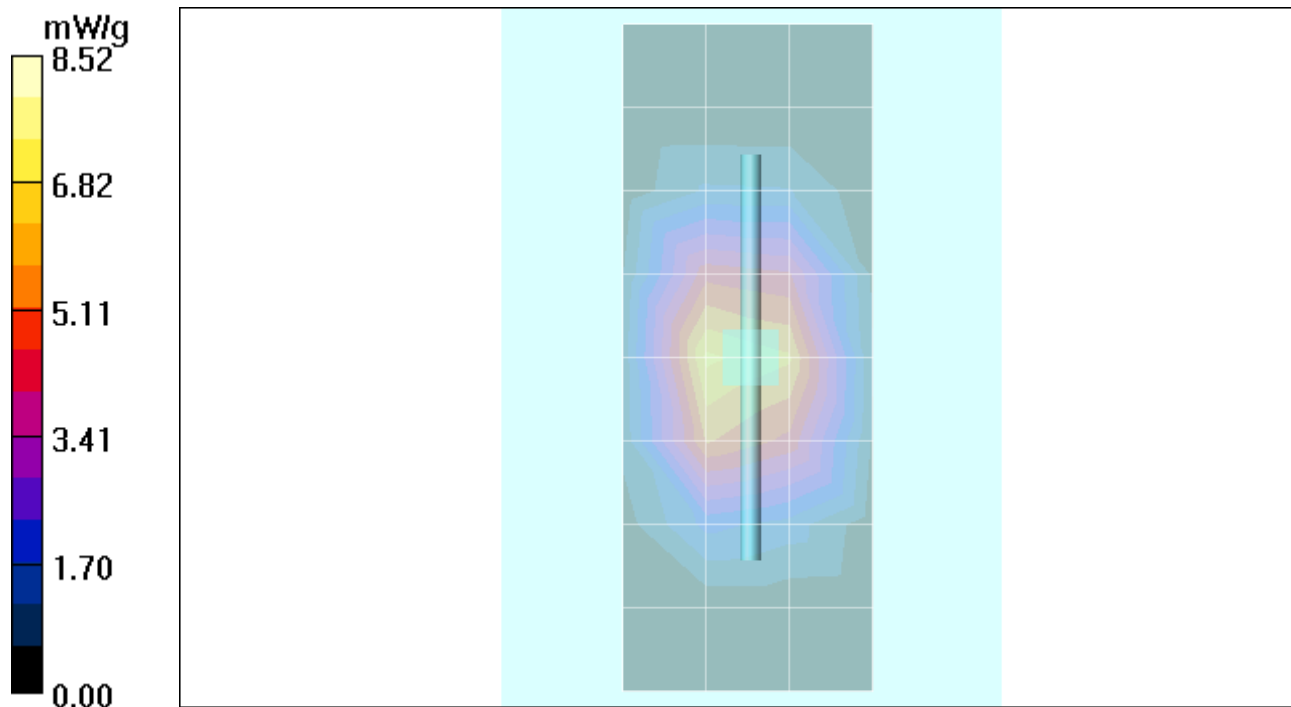
SAR(1 g) = 7.67 mW/g; SAR(10 g) = 4.06 mW/g

Maximum value of SAR (measured) = 8.53 mW/g

Daily SPC Check/Z-Axis Retraction (1x1x31):

Measurement grid: dx=20mm, dy=20mm, dz=5mm

Maximum value of SAR (measured) = 8.52 mW/g



Date/Time: 12/9/2005 8:56:09 AM

Test Laboratory: Motorola

120905 900Mhz GOOD-2.7%

DUT: Dipole 900 MHz; Type: D900V2; Serial: D900V2 - SN:080

Procedure Notes: 900 MHz System Performance Check / Dipole Sn# 80

PM1 Power = 200 mW Sim.Temp@meas = 21.0°C Sim.Temp@SPC = 21.0°C Room Temp @ SPC = 23°C

Communication System: CW - Dipole; Frequency: 900 MHz; Channel Number: 4; Duty Cycle: 1:1

Medium: VALIDATION Only; Medium parameters used: $\sigma = 0.97$ mho/m, $\epsilon_r = 41.3$; $\rho = 1000$ kg/m³

DASY4 Configuration:

- Probe: ET3DV6R - SN1397; ConvF(6.38, 6.38, 6.38); Calibrated: 4/22/2005
- Sensor-Surface: 4mm (Mechanical Surface Detection)
- Electronics: DAE3 Sn440; Calibrated: 2/21/2005
- Phantom: R3: Sugar Water SAM; Type: SAM; Serial: TP-1153;
- Measurement SW: DASY4, V4.6 Build 23; Postprocessing SW: SEMCAD, V1.8 Build 147

Daily SPC Check/Dipole Area Scan (4x9x1):

Measurement grid: dx=15mm, dy=15mm

Maximum value of SAR (measured) = 2.20 mW/g

Daily SPC Check/0-Degree 5x5x7 Cube (5x5x7)/Cube 0:

Measurement grid: dx=8mm, dy=8mm, dz=5mm

Reference Value = 51.8 V/m; Power Drift = 0.00 dB

Peak SAR (extrapolated) = 3.37 W/kg

SAR(1 g) = 2.26 mW/g; SAR(10 g) = 1.45 mW/g

Maximum value of SAR (measured) = 2.46 mW/g

Daily SPC Check/90-Degree 5x5x7 Cube (5x5x7)/Cube 0:

Measurement grid: dx=8mm, dy=8mm, dz=5mm

Reference Value = 51.8 V/m; Power Drift = 0.00 dB

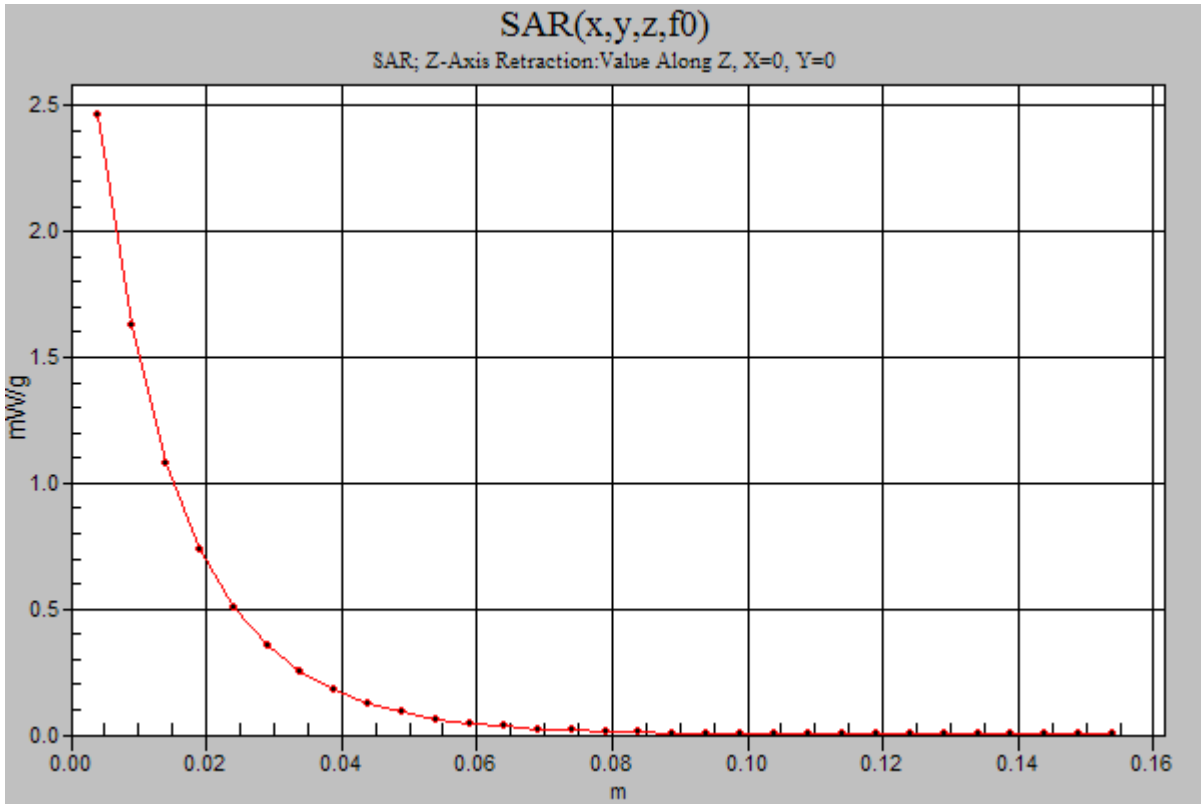
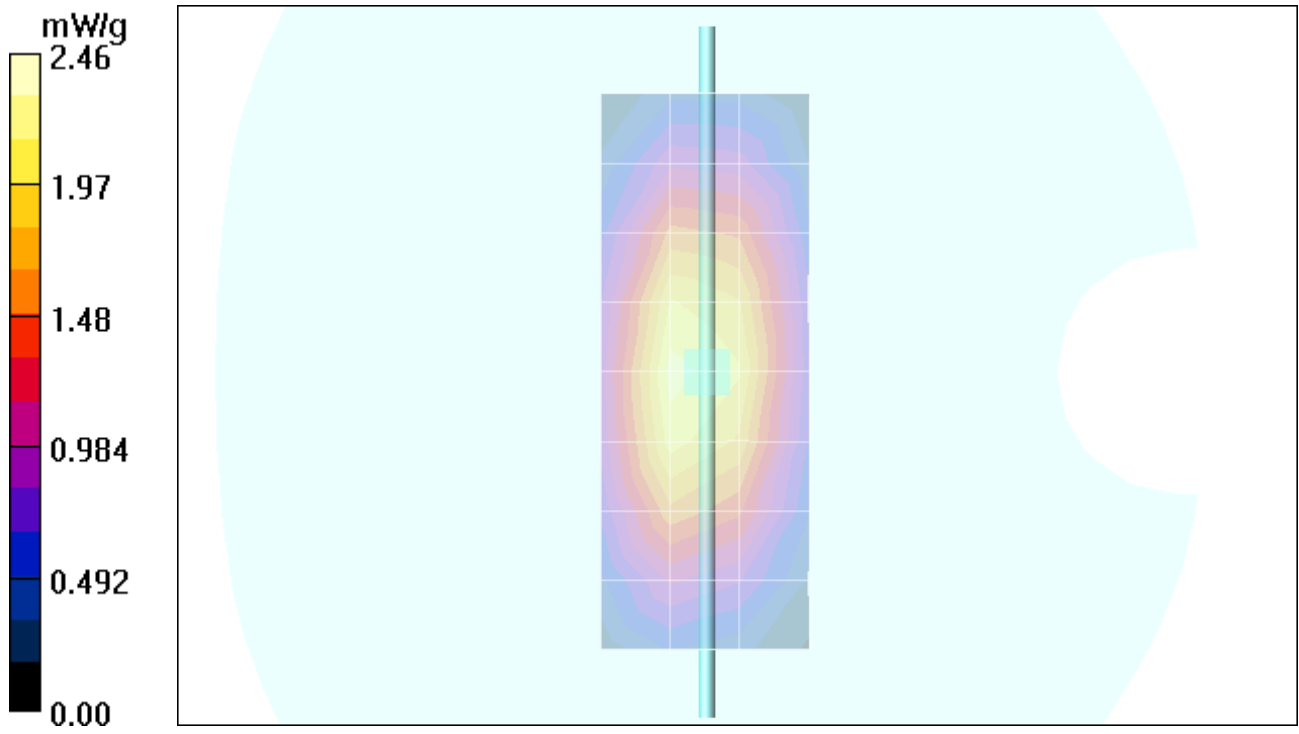
Peak SAR (extrapolated) = 3.18 W/kg

SAR(1 g) = 2.14 mW/g; SAR(10 g) = 1.38 mW/g

Maximum value of SAR (measured) = 2.28 mW/g

Daily SPC Check/Z-Axis Retraction (1x1x31):

Measurement grid: dx=20mm, dy=20mm, dz=5mm



Date/Time: 12/12/2005 6:45:35 AM

Test Laboratory: Motorola

121205 1800Mhz GOOD-4.4%

DUT: Dipole 1800 MHz; Type: D1800V2; Serial: D1800V2 - SN:251tr

Procedure Notes: 1800 MHz System Performance Check / Dipole Sn# 251tr

PM1 Power = 200 mW Sim.Temp@meas = 20.2°C Sim.Temp@SPC = 20.2°C Room Temp @ SPC = 22.5°C

Communication System: CW - Dipole; Frequency: 1800 MHz; Channel Number: 8; Duty Cycle: 1:1

Medium: VALIDATION Only; Medium parameters used: $\sigma = 1.34$ mho/m, $\epsilon_r = 40.2$; $\rho = 1000$ kg/m³

DASY4 Configuration:

- Probe: ET3DV6R - SN1397; ConvF(5.17, 5.17, 5.17); Calibrated: 4/22/2005
- Sensor-Surface: 4mm (Mechanical Surface Detection)
- Electronics: DAE3 Sn440; Calibrated: 2/21/2005
- Phantom: R3: Sect.1, Amy Twin; Type: Amy Twin Flat; Serial: n/a;
- Measurement SW: DASY4, V4.6 Build 23; Postprocessing SW: SEMCAD, V1.8 Build 147

Daily SPC Check/Dipole Area Scan (9x4x1):

Measurement grid: dx=15mm, dy=15mm

Maximum value of SAR (measured) = 6.85 mW/g

Daily SPC Check/0-Degree 5x5x7 Cube (5x5x7)/Cube 0:

Measurement grid: dx=8mm, dy=8mm, dz=5mm

Reference Value = 80.6 V/m; Power Drift = -0.00 dB

Peak SAR (extrapolated) = 12.5 W/kg

SAR(1 g) = 7.45 mW/g; SAR(10 g) = 4.02 mW/g

Maximum value of SAR (measured) = 8.37 mW/g

Daily SPC Check/90-Degree 5x5x7 Cube (5x5x7)/Cube 0:

Measurement grid: dx=8mm, dy=8mm, dz=5mm

Reference Value = 80.6 V/m; Power Drift = -0.00 dB

Peak SAR (extrapolated) = 12.2 W/kg

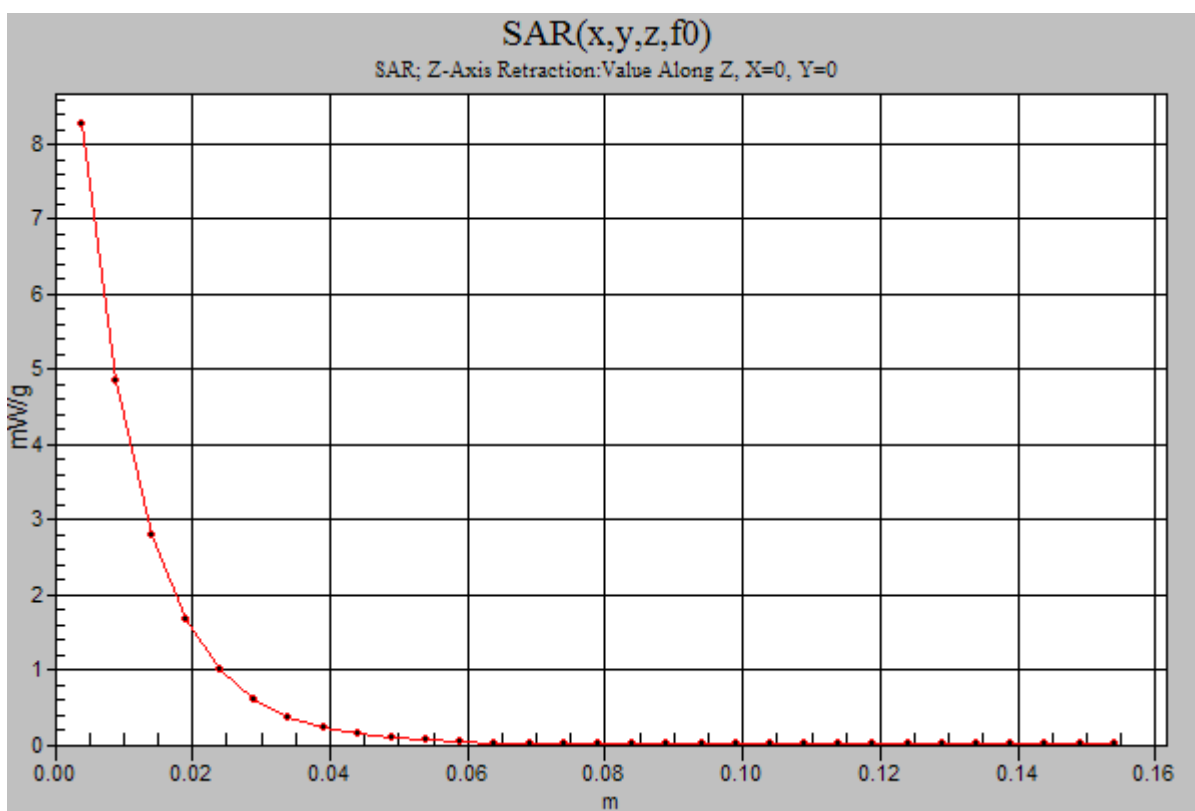
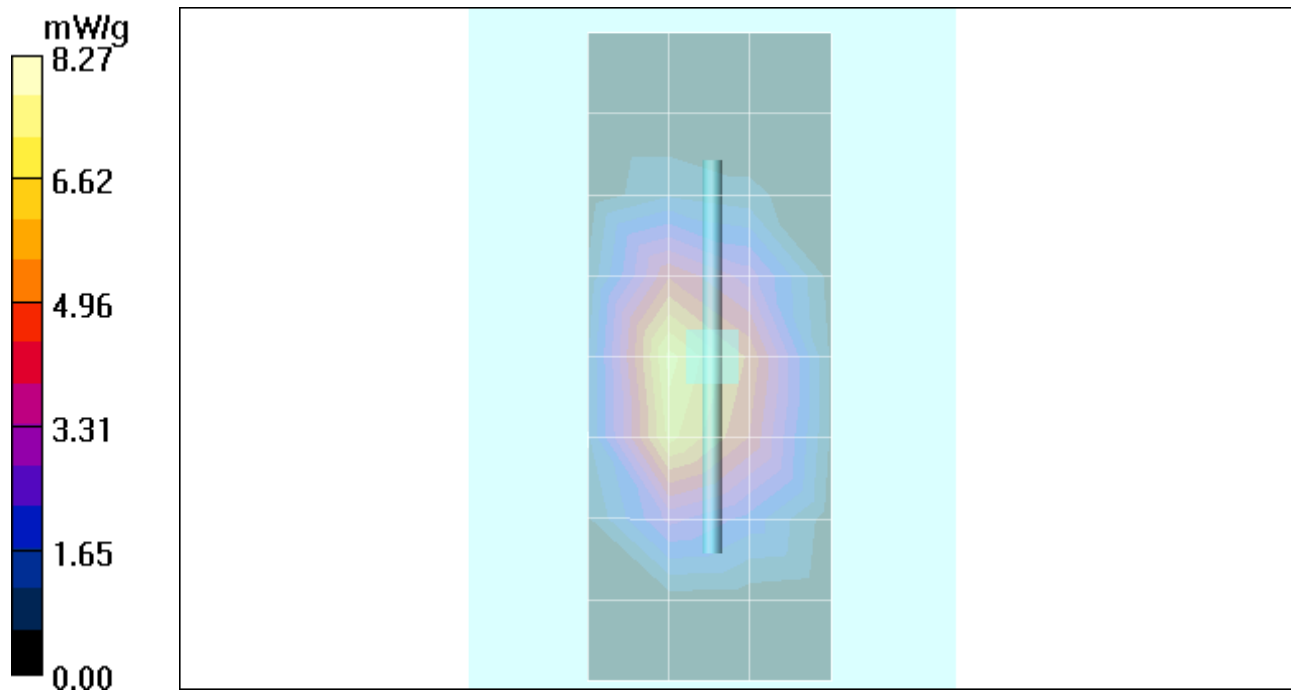
SAR(1 g) = 7.12 mW/g; SAR(10 g) = 3.83 mW/g

Maximum value of SAR (measured) = 7.94 mW/g

Daily SPC Check/Z-Axis Retraction (1x1x31):

Measurement grid: dx=20mm, dy=20mm, dz=5mm

Maximum value of SAR (measured) = 8.27 mW/g



Date/Time: 10/17/2006 2:57:04 PM

Test Laboratory: Motorola

2450 MHz Validation

DUT: Dipole 2450 MHz; Type: D2450V2; Serial: D2450V2 - SN:740;

Procedure Notes: PM1 Power = 200 mW Refl.Pwr PM3 = -20.95 dB [Sim.Temp@SPC](#) = 19.8 °C Room Temp @ SPC = 21.1 °C

Communication System: CW - Dipole; Frequency: 2450 MHz; Communication System Channel Number: 11; Duty Cycle: 1:1

Medium: VALIDATION Only; Medium parameters used: $f = 2450$ MHz; $\sigma = 1.89$ mho/m; $\epsilon_r = 37.5$; $\rho = 1000$ kg/m³

DASY4 Configuration:

- Probe: ET3DV6 - SN1524; ConvF(4.49, 4.49, 4.49); Calibrated: 5/30/2006
- Sensor-Surface: 4mm (Mechanical Surface Detection)
- Electronics: DAE4 Sn316; Calibrated: 11/24/2005
- Phantom: R2: Glycol SAM; Type: SAM; Serial: TP-1235;
- Measurement SW: DASY4, V4.7 Build 44; Postprocessing SW: SEMCAD, V1.8 Build 171

Daily SPC Check/Dipole Area Scan (4x9x1): Measurement grid: dx=15mm, dy=15mm

Maximum value of SAR (measured) = 9.88 mW/g

Daily SPC Check/0-Degree 5x5x7 Cube (5x5x7)/Cube 0: Measurement grid: dx=8mm, dy=8mm, dz=5mm

Reference Value = 81.4 V/m; Power Drift = -0.013 dB

Peak SAR (extrapolated) = 25.3 W/kg

SAR(1 g) = 11.1 mW/g; SAR(10 g) = 5.1 mW/g

Maximum value of SAR (measured) = 12.2 mW/g

Daily SPC Check/90-Degree 5x5x7 Cube (5x5x7)/Cube 0: Measurement grid: dx=8mm, dy=8mm, dz=5mm

Reference Value = 81.4 V/m; Power Drift = -0.013 dB

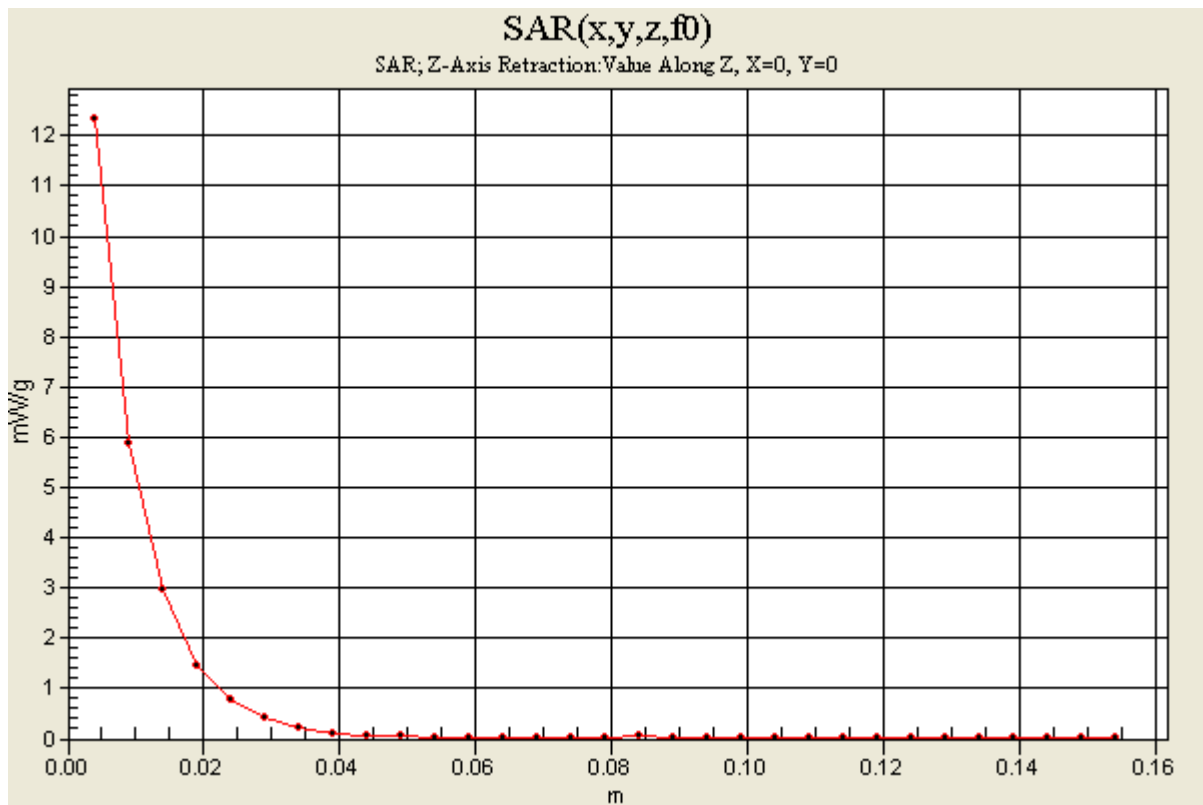
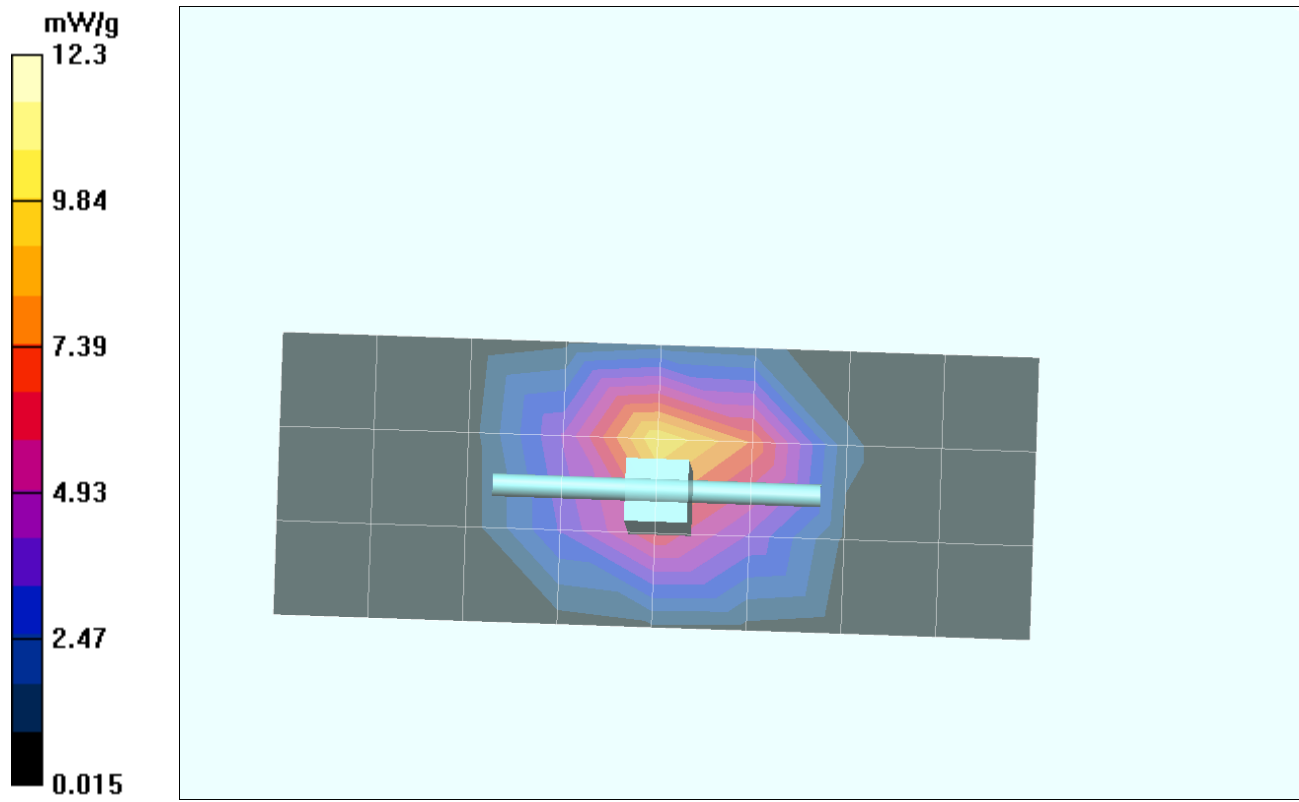
Peak SAR (extrapolated) = 25.0 W/kg

SAR(1 g) = 11.2 mW/g; SAR(10 g) = 5.17 mW/g

Maximum value of SAR (measured) = 12.4 mW/g

Daily SPC Check/Z-Axis Retraction (1x1x31): Measurement grid: dx=20mm, dy=20mm, dz=5mm

Maximum value of SAR (measured) = 12.3 mW/g



Date/Time: 10/22/2006 6:00:02 AM

Test Laboratory: Motorola

2450 MHz Validation

DUT: Dipole 2450 MHz; Type: D2450V2; Serial: D2450V2 - SN:740;

Procedure Notes: PM1 Power = 200mW Refl.Pwr PM3= -21.1dB [Sim.Temp@SPC](#) = 20*C Room Temp @ SPC = 20.5*C

Communication System: CW - Dipole; Frequency: 2450 MHz; Communication System Channel Number: 11; Duty Cycle: 1:1

Medium: 2450 Glycol Head; Medium parameters used: $f = 2450$ MHz; $\sigma = 1.89$ mho/m; $\epsilon_r = 37.4$; $\rho = 1000$ kg/m³

DASY4 Configuration:

- Probe: ET3DV6R - SN1506; ConvF(4.18, 4.18, 4.18); Calibrated: 5/30/2006
- Sensor-Surface: 4mm (Mechanical Surface Detection)
- Electronics: DAE4 Sn650; Calibrated: 8/22/2006
- Phantom: R2: Glycol SAM; Type: SAM; Serial: TP-1235;
- Measurement SW: DASY4, V4.7 Build 44; Postprocessing SW: SEMCAD, V1.8 Build 171

Daily SPC Check/Dipole Area Scan (4x9x1): Measurement grid: dx=15mm, dy=15mm

Maximum value of SAR (measured) = 11.2 mW/g

Daily SPC Check/0-Degree 5x5x7 Cube (5x5x7)/Cube 0: Measurement grid: dx=8mm, dy=8mm, dz=5mm

Reference Value = 87.0 V/m; Power Drift = -0.068 dB

Peak SAR (extrapolated) = 25.1 W/kg

SAR(1 g) = 11.6 mW/g; SAR(10 g) = 5.35 mW/g

Maximum value of SAR (measured) = 12.9 mW/g

Daily SPC Check/90-Degree 5x5x7 Cube (5x5x7)/Cube 0: Measurement grid: dx=8mm, dy=8mm, dz=5mm

Reference Value = 87.0 V/m; Power Drift = -0.068 dB

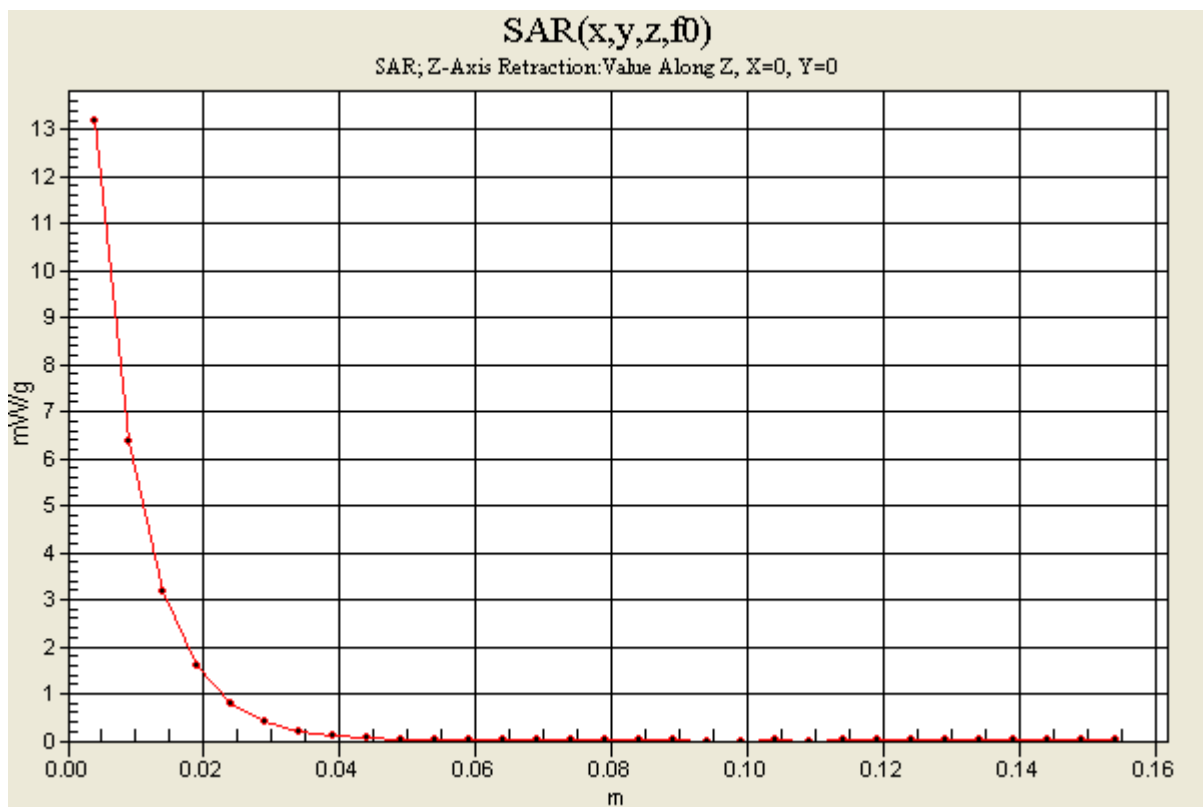
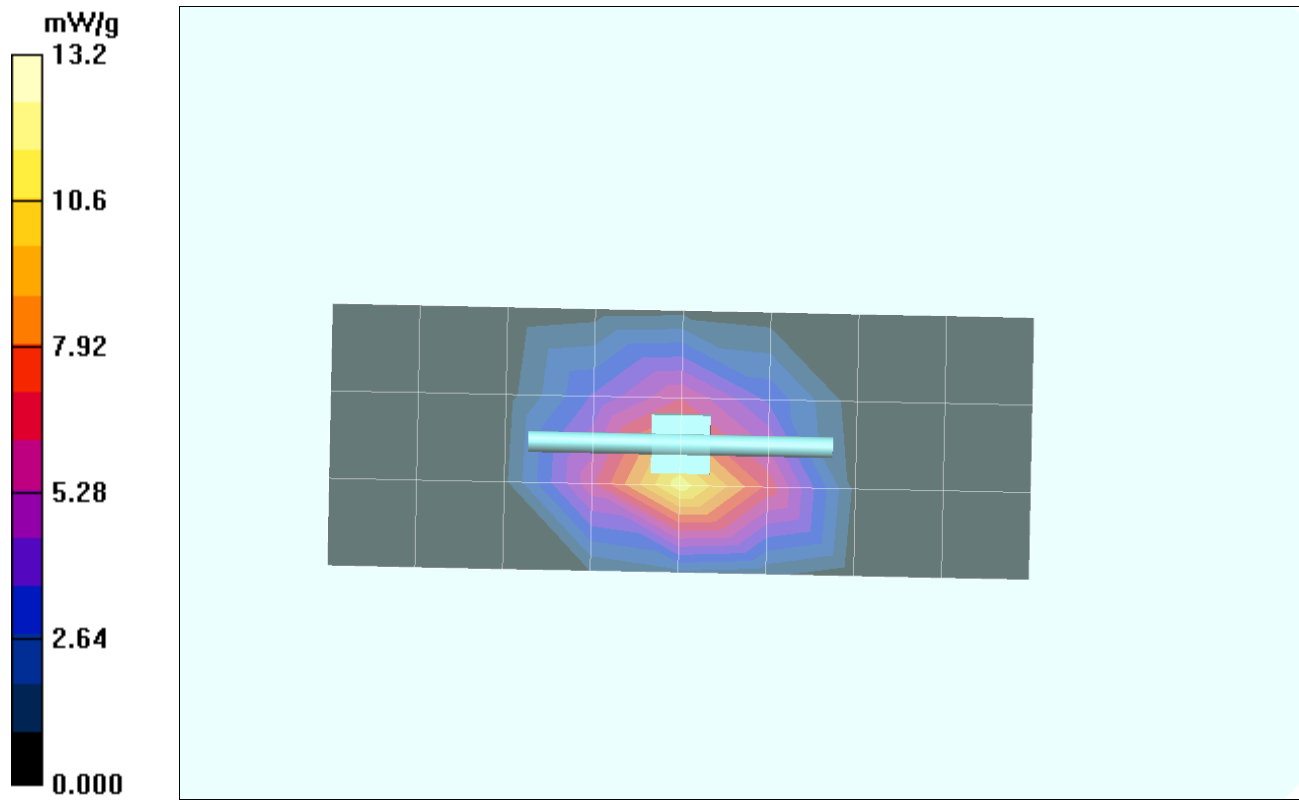
Peak SAR (extrapolated) = 24.5 W/kg

SAR(1 g) = 11.3 mW/g; SAR(10 g) = 5.26 mW/g

Maximum value of SAR (measured) = 12.1 mW/g

Daily SPC Check/Z-Axis Retraction (1x1x31): Measurement grid: dx=20mm, dy=20mm, dz=5mm

Maximum value of SAR (measured) = 13.2 mW/g



Date/Time: 10/23/2006 2:26:22 PM

Test Laboratory: Motorola

2450 MHz Validation

DUT: Dipole 2450 MHz; Type: D2450V2; Serial: D2450V2 - SN:740;

Procedure Notes: PM1 Power = 200 mW Refl.Pwr PM3 = -23.5dB Sim.Temp@SPC = 19.3 °C Room Temp @ SPC = 21 °C

Communication System: CW - Dipole; Frequency: 2450 MHz; Communication System Channel Number: 11; Duty Cycle: 1:1

Medium: VALIDATION Only; Medium parameters used: $f = 2450$ MHz; $\sigma = 1.89$ mho/m; $\epsilon_r = 37.9$; $\rho = 1000$ kg/m³

DASY4 Configuration:

- Probe: ET3DV6R - SN1506; ConvF(4.18, 4.18, 4.18); Calibrated: 5/30/2006
- Sensor-Surface: 4mm (Mechanical Surface Detection)
- Electronics: DAE4 Sn650; Calibrated: 8/22/2006
- Phantom: R2 Sect 1, Amy Twin, Rev2 (23-June-04); Type: Amy Twin Flat; Serial: n/a;
- Measurement SW: DASY4, V4.7 Build 44; Postprocessing SW: SEMCAD, V1.8 Build 171

Daily SPC Check/Dipole Area Scan (9x4x1): Measurement grid: dx=15mm, dy=15mm

Maximum value of SAR (measured) = 12.2 mW/g

Daily SPC Check/0-Degree 5x5x7 Cube (5x5x7)/Cube 0: Measurement grid: dx=8mm, dy=8mm, dz=5mm

Reference Value = 87.0 V/m; Power Drift = 0.033 dB

Peak SAR (extrapolated) = 26.6 W/kg

SAR(1 g) = 12.1 mW/g; SAR(10 g) = 5.57 mW/g

Maximum value of SAR (measured) = 13.5 mW/g

Daily SPC Check/90-Degree 5x5x7 Cube (5x5x7)/Cube 0: Measurement grid: dx=8mm, dy=8mm, dz=5mm

Reference Value = 87.0 V/m; Power Drift = 0.033 dB

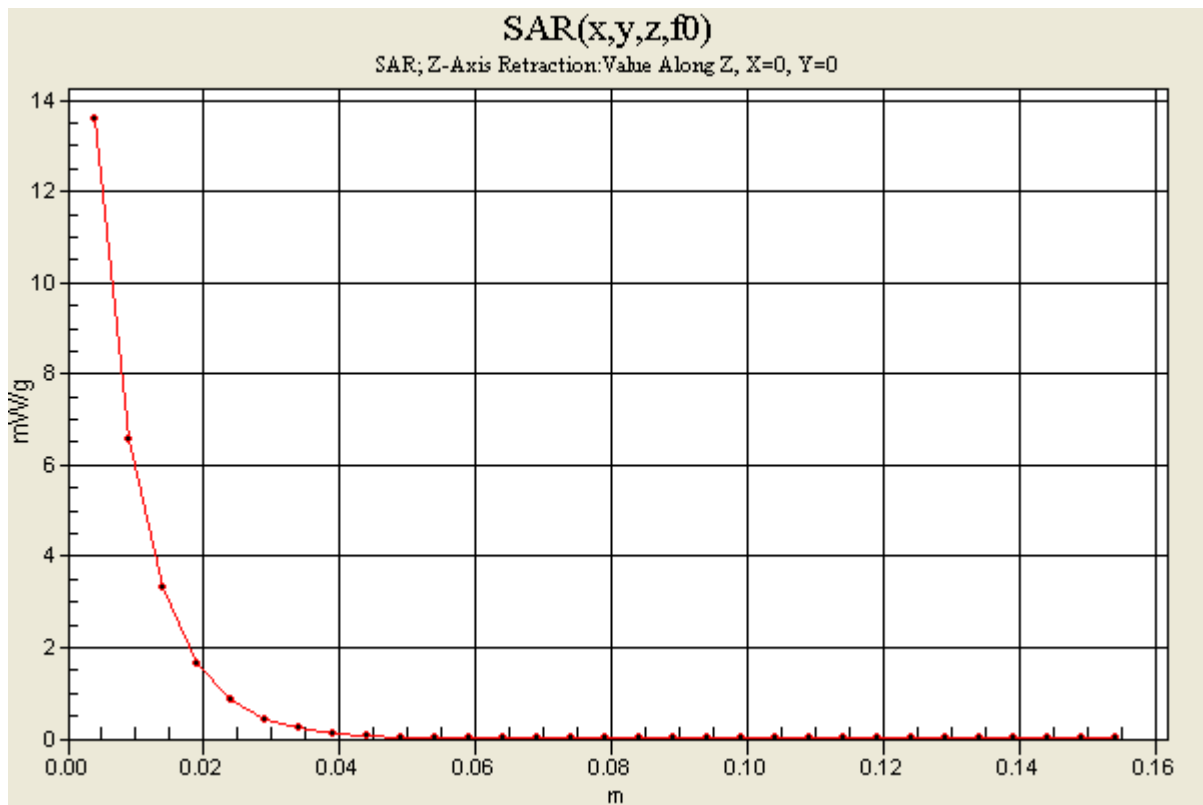
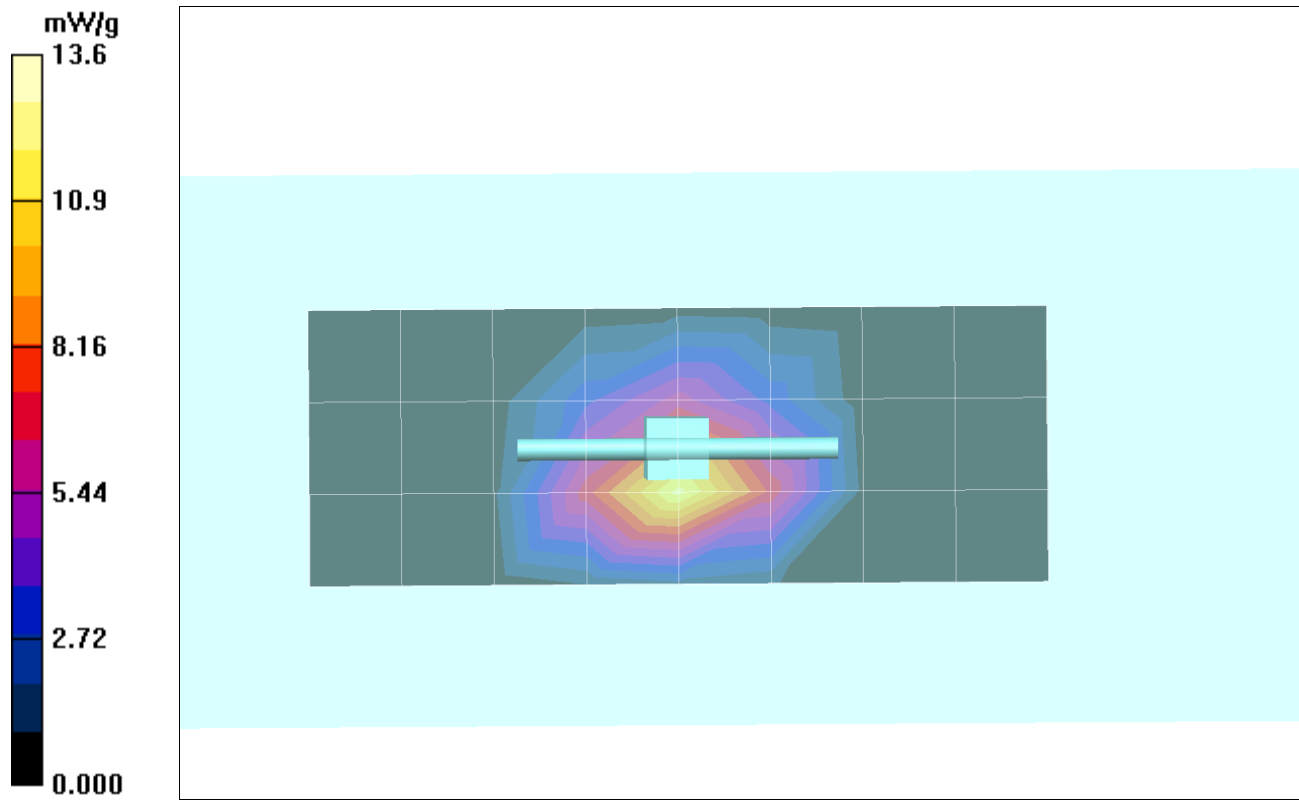
Peak SAR (extrapolated) = 25.7 W/kg

SAR(1 g) = 11.7 mW/g; SAR(10 g) = 5.35 mW/g

Maximum value of SAR (measured) = 12.9 mW/g

Daily SPC Check/Z-Axis Retraction (1x1x31): Measurement grid: dx=20mm, dy=20mm, dz=5mm

Maximum value of SAR (measured) = 13.6 mW/g



Appendix 2

SAR distribution plots for Phantom Head Adjacent Use

Date/Time: 11/1/2005 6:13:45 PM

Test Laboratory: Motorola**835 RH Cheek ch384****Serial: 5281C085**

Procedure Notes: Pwr Step: Always Up

Antenna Position: Internal

Battery Model #: SNN5765A

DEVICE POSITION (cheek or rotated): CHEEK

Communication System: CDMA 835; Frequency: 836.52 MHz; Channel Number: 384; Duty Cycle: 1:1

Medium: Low Freq Head; Medium parameters used: $\sigma = 0.92$ mho/m, $\epsilon_r = 42.4$; $\rho = 1000$ kg/m³

DASY4 Configuration:

- Probe: ET3DV6R - SN1397; ConvF(6.38, 6.38, 6.38); Calibrated: 4/22/2005
- Sensor-Surface: 4mm (Mechanical Surface Detection)
- Electronics: DAE3 Sn437; Calibrated: 3/24/2005
- Phantom: R3: Sugar Water SAM; Type: SAM; Serial: TP-1153;
- Measurement SW: DASY4, V4.6 Build 19; Postprocessing SW: SEMCAD, V1.8 Build 147

Right Head Template/Area Scan - Normal (15mm) (7x17x1):

Measurement grid: dx=15mm, dy=15mm

Maximum value of SAR (measured) = 0.884 mW/g

Right Head Template/Zoom Scan (7x7x7)/Cube 0:

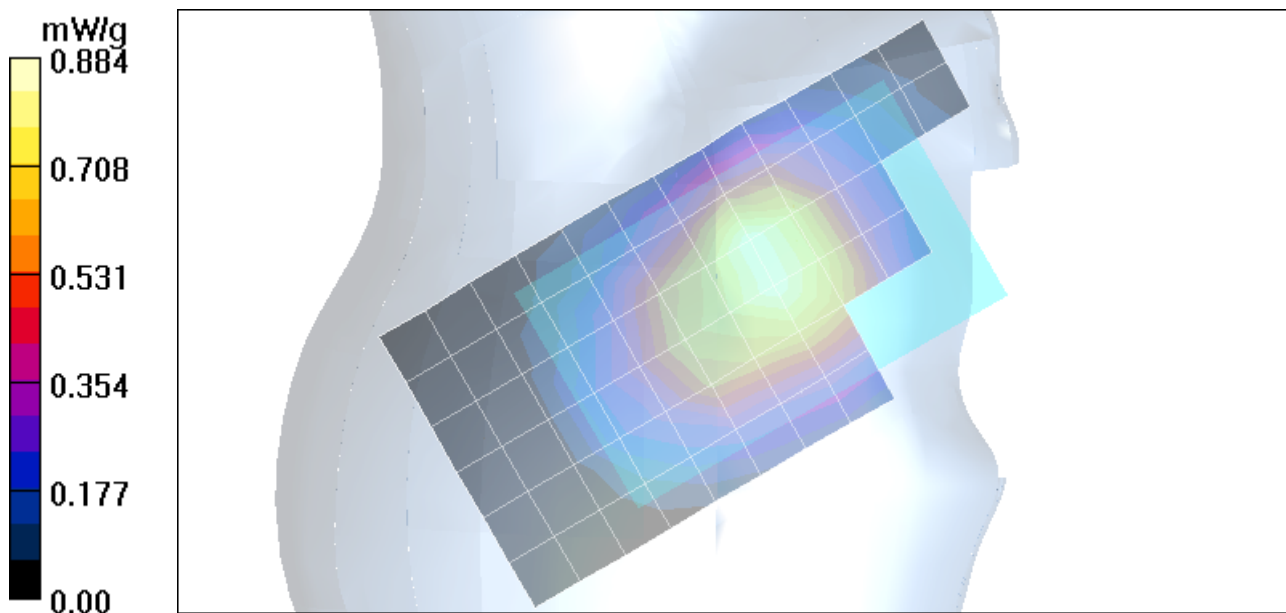
Measurement grid: dx=5mm, dy=5mm, dz=5mm

Reference Value = 30.2 V/m; Power Drift = 0.199 dB

Peak SAR (extrapolated) = 1.24 W/kg

SAR(1 g) = 0.880 mW/g; SAR(10 g) = 0.646 mW/g

Maximum value of SAR (measured) = 0.981 mW/g



Date/Time: 11/2/2005 1:30:05 AM

Test Laboratory: Motorola**835 LH Tilt ch384****Serial: 5281C085**

Procedure Notes: Pwr Step: Always Up

Antenna Position: Internal

Battery Model #: SNN5783A

DEVICE POSITION (cheek or rotated): Rotated

Communication System: CDMA 835; Frequency: 836.52 MHz; Channel Number: 384; Duty Cycle: 1:1

Medium: Low Freq Head; Medium parameters used: $\sigma = 0.92$ mho/m, $\epsilon_r = 42.4$; $\rho = 1000$ kg/m³

DASY4 Configuration:

- Probe: ET3DV6R - SN1397; ConvF(6.38, 6.38, 6.38); Calibrated: 4/22/2005
- Sensor-Surface: 4mm (Mechanical Surface Detection)
- Electronics: DAE3 Sn437; Calibrated: 3/24/2005
- Phantom: R3: Sugar Water SAM; Type: SAM; Serial: TP-1153;
- Measurement SW: DASY4, V4.6 Build 19; Postprocessing SW: SEMCAD, V1.8 Build 147

Left Head Template/Area Scan - Normal (15mm) (7x17x1):

Measurement grid: dx=15mm, dy=15mm

Maximum value of SAR (measured) = 0.595 mW/g

Left Head Template/Zoom Scan (7x7x7)/Cube 0:

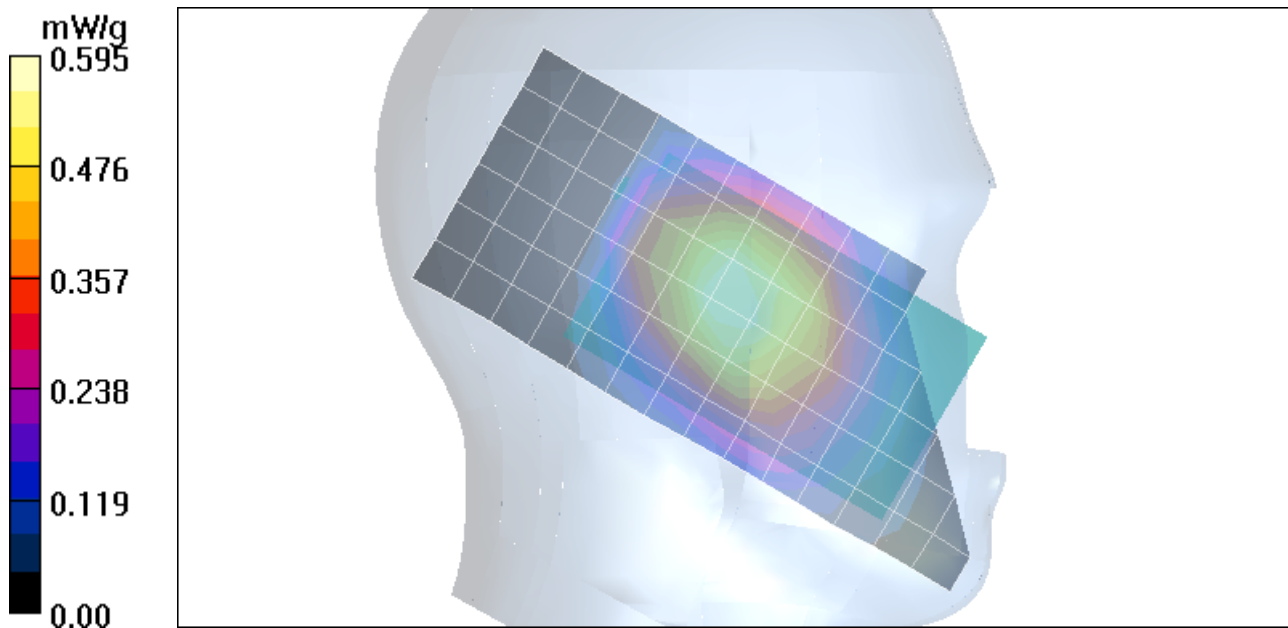
Measurement grid: dx=5mm, dy=5mm, dz=5mm

Reference Value = 26.5 V/m; Power Drift = -0.197 dB

Peak SAR (extrapolated) = 0.737 W/kg

SAR(1 g) = 0.607 mW/g; SAR(10 g) = 0.457 mW/g

Maximum value of SAR (measured) = 0.652 mW/g



Date/Time: 11/3/2005 1:19:41 PM

Test Laboratory: Motorola**1900 RH Cheek ch600****Serial: 5281C085**

Procedure Notes: Pwr Step: Alway Up

Antenna Position: Internal

Battery Model #: SNN5765A

DEVICE POSITION (cheek or rotated): Cheek

Communication System: CDMA 1900; Frequency: 1880 MHz; Channel Number: 600; Duty Cycle: 1:1

Medium: Back-Up Glycol Head; Medium parameters used: $\sigma = 1.45$ mho/m, $\epsilon_r = 39.2$; $\rho = 1000$ kg/m³

DASY4 Configuration:

- Probe: ET3DV6R - SN1397; ConvF(5.17, 5.17, 5.17); Calibrated: 4/22/2005
- Sensor-Surface: 4mm (Mechanical Surface Detection)
- Electronics: DAE3 Sn437; Calibrated: 3/24/2005
- Phantom: R3: Glycol SAM; Type: SAM; Serial: TP-1159;
- Measurement SW: DASY4, V4.6 Build 19; Postprocessing SW: SEMCAD, V1.8 Build 147

Right Head Template/Area Scan - Normal (15mm) (7x17x1):

Measurement grid: dx=15mm, dy=15mm

Maximum value of SAR (measured) = 0.801 mW/g

Right Head Template/Zoom Scan (7x7x7)/Cube 0:

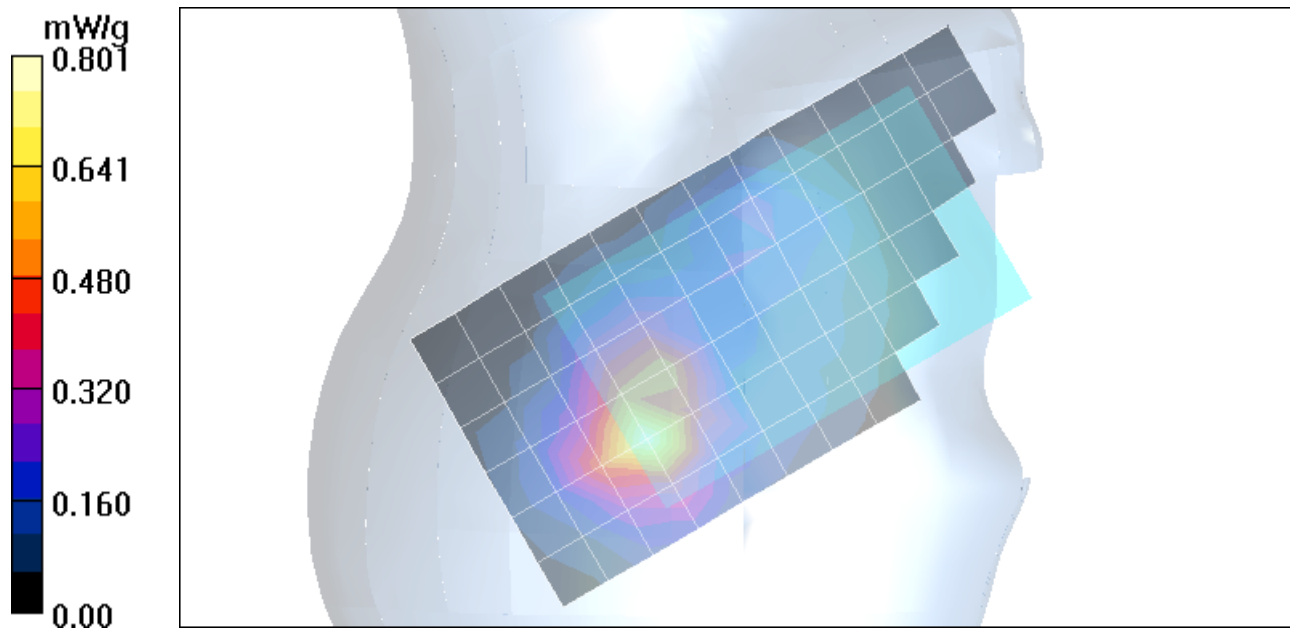
Measurement grid: dx=5mm, dy=5mm, dz=5mm

Reference Value = 21.8 V/m; Power Drift = -0.258 dB

Peak SAR (extrapolated) = 1.50 W/kg

SAR(1 g) = 0.734 mW/g; SAR(10 g) = 0.402 mW/g

Maximum value of SAR (measured) = 0.877 mW/g



Date/Time: 11/3/2005 3:11:58 PM

Test Laboratory: Motorola**1900 RH Tilt ch1175****Serial: 5281C085**

Procedure Notes: Pwr Step: Alway Up

Antenna Position: Internal

Battery Model #: SNN5765A

DEVICE POSITION (cheek or rotated): Rotated

Communication System: CDMA 1900; Frequency: 1908.75 MHz; Channel Number: 1175; Duty Cycle: 1:1

Medium: Back-Up Glycol Head; Medium parameters used: $\sigma = 1.45$ mho/m, $\epsilon_r = 39.2$; $\rho = 1000$ kg/m³

DASY4 Configuration:

- Probe: ET3DV6R - SN1397; ConvF(5.17, 5.17, 5.17); Calibrated: 4/22/2005
- Sensor-Surface: 4mm (Mechanical Surface Detection)
- Electronics: DAE3 Sn437; Calibrated: 3/24/2005
- Phantom: R3: Glycol SAM; Type: SAM; Serial: TP-1159;
- Measurement SW: DASY4, V4.6 Build 19; Postprocessing SW: SEMCAD, V1.8 Build 147

Right Head Template/Area Scan - Normal (15mm) (7x17x1):

Measurement grid: dx=15mm, dy=15mm

Maximum value of SAR (measured) = 1.09 mW/g

Right Head Template/Zoom Scan (7x7x7)/Cube 0:

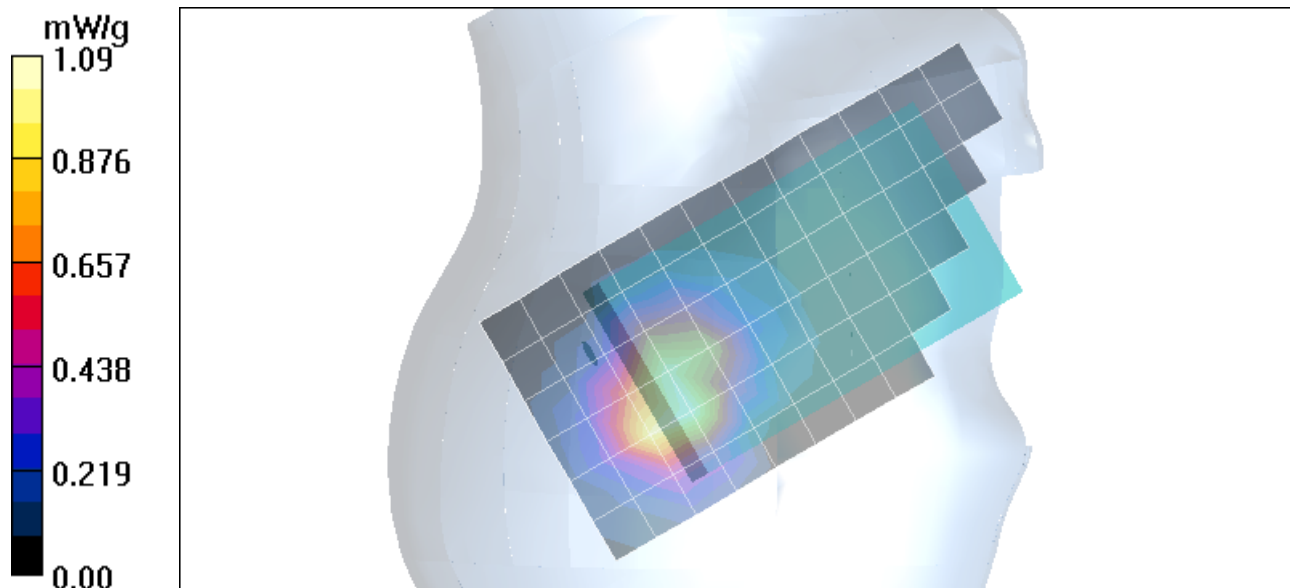
Measurement grid: dx=5mm, dy=5mm, dz=5mm

Reference Value = 28.1 V/m; Power Drift = -0.315 dB

Peak SAR (extrapolated) = 2.11 W/kg

SAR(1 g) = 1.03 mW/g; SAR(10 g) = 0.577 mW/g

Maximum value of SAR (measured) = 1.20 mW/g



Date/Time: 10/17/2006 12:52:34 PM

Test Laboratory: Motorola

WiFi - Cheek Touch Position

Procedure Notes: Test Mode Antenna Position: Internal Accessory Model #: 802.11Card Battery Model #: SNN5765A DEVICE POSITION: Cheek

Communication System: Wi-Fi 2450; Frequency: 2437 MHz; Communication System Channel Number: 6; Duty Cycle: 1:1

Medium: 2450 Glycol Head; Medium parameters used: $f = 2450$ MHz; $\sigma = 1.89$ mho/m; $\epsilon_r = 37.5$; $\rho = 1000$ kg/m³

DASY4 Configuration:

- Probe: ET3DV6 - SN1524; ConvF(4.49, 4.49, 4.49); Calibrated: 5/30/2006
- Sensor-Surface: 4mm (Mechanical Surface Detection)
- Electronics: DAE4 Sn316; Calibrated: 11/24/2005
- Phantom: R2: Glycol SAM; Type: SAM; Serial: TP-1235;
- Measurement SW: DASY4, V4.7 Build 44; Postprocessing SW: SEMCAD, V1.8 Build 171

Right Head Template/Area Scan - Normal (15mm) (7x17x1): Measurement grid: dx=15mm, dy=15mm

Maximum value of SAR (measured) = 0.208 mW/g

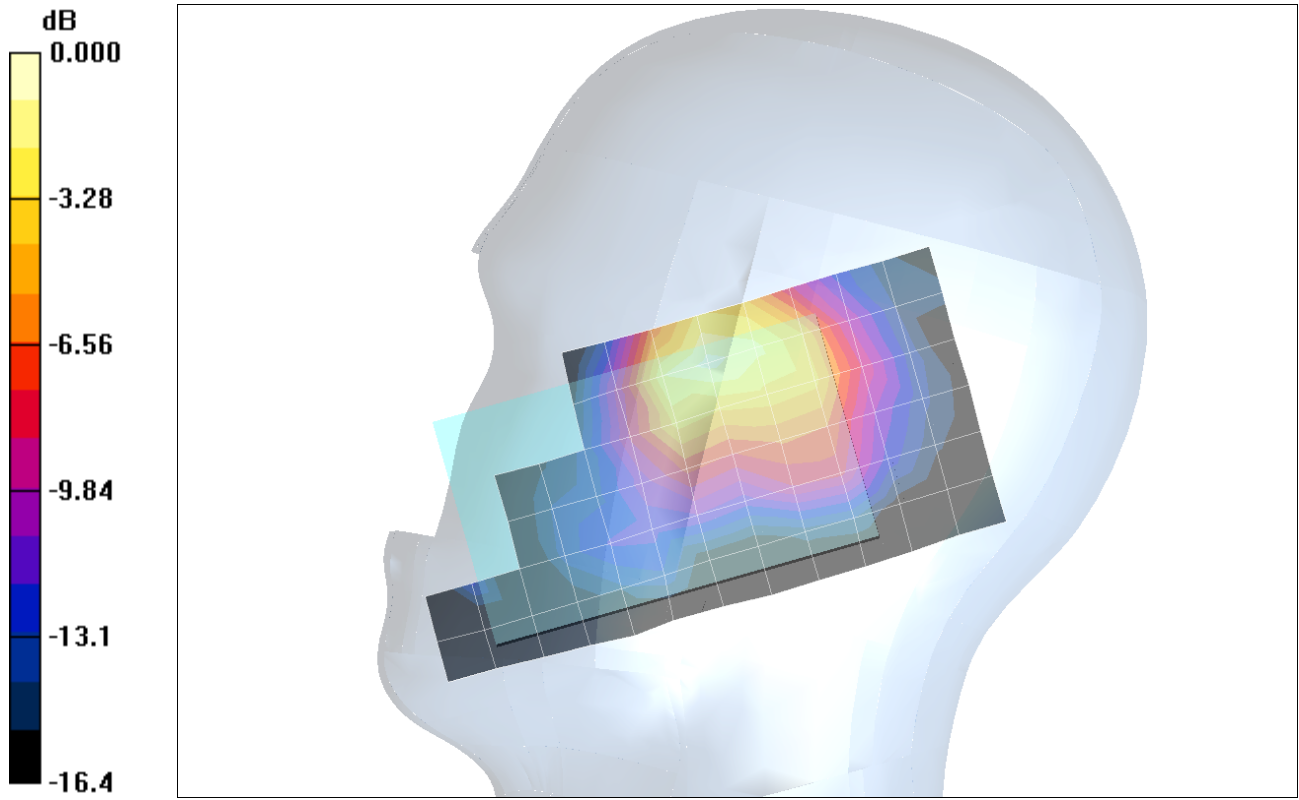
Right Head Template/SPECIAL SMALL 16x16x30 Zoom Scan (5x5x7)/Cube 0: Measurement grid: dx=4mm, dy=4mm, dz=5mm

Reference Value = 7.08 V/m; Power Drift = -0.022 dB

Peak SAR (extrapolated) = 0.507 W/kg

SAR(1 g) = 0.203 mW/g; SAR(10 g) = n.a.

Maximum value of SAR (measured) = 0.241 mW/g



0 dB = 0.241mW/g

Date/Time: 10/22/2006 6:56:28 AM

Test Laboratory: Motorola

WiFi - 15 Degree Tilt Position

Procedure Notes: Antenna Position: INTERNAL Accessory Model #: 801.11 card Battery Model #: SNN5765A DEVICE POSITION: TILT

Communication System: Wi-Fi 2450; Frequency: 2437 MHz; Communication System Channel Number: 6; Duty Cycle: 1:1

Medium: 2450 Glycol Head; Medium parameters used: $f = 2450$ MHz; $\sigma = 1.89$ mho/m; $\epsilon_r = 37.4$; $\rho = 1000$ kg/m³

DASY4 Configuration:

- Probe: ET3DV6R - SN1506; ConvF(4.18, 4.18, 4.18); Calibrated: 5/30/2006
- Sensor-Surface: 4mm (Mechanical Surface Detection)
- Electronics: DAE4 Sn650; Calibrated: 8/22/2006
- Phantom: R2: Glycol SAM; Type: SAM; Serial: TP-1235;
- Measurement SW: DASY4, V4.7 Build 44; Postprocessing SW: SEMCAD, V1.8 Build 171

Right Head Template/Area Scan - Normal (15mm) (7x17x1): Measurement grid: dx=15mm, dy=15mm

Maximum value of SAR (measured) = 0.108 mW/g

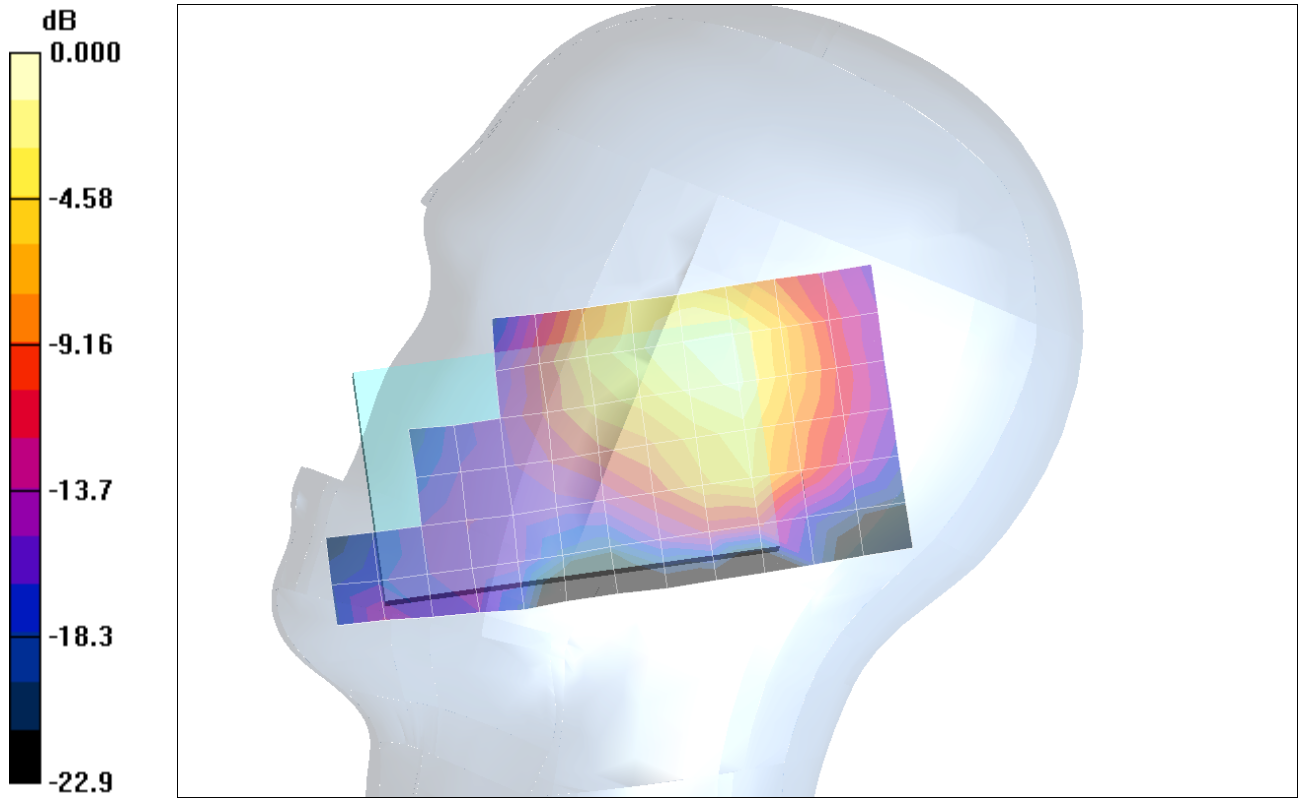
Right Head Template/Zoom Scan (7x7x7)/Cube 0: Measurement grid: dx=5mm, dy=5mm, dz=5mm

Reference Value = 6.53 V/m; Power Drift = -0.143 dB

Peak SAR (extrapolated) = 0.229 W/kg

SAR(1 g) = 0.113 mW/g; SAR(10 g) = 0.060 mW/g

Maximum value of SAR (measured) = 0.136 mW/g



0 dB = 0.136mW/g

Appendix 3

SAR distribution plots for Body Worn Configuration

Date/Time: 12/9/2005 3:52:00 PM

Test Laboratory: Motorola**835 EVDO Back 15mm ch384****Serial: 5281C085**

Procedure Notes: Pwr Step: Always Up Antenna Position: Internal Battery Model #: SNN5783A

Accessory Model # = Back of Phone 15mm from Phantom Note: EVDO mode

Communication System: CDMA 835; Frequency: 836.52 MHz; Channel Number: 384; Duty Cycle: 1:1

Medium: Low Freq Body; Medium parameters used: $\sigma = 0.98$ mho/m, $\epsilon_r = 54.3$; $\rho = 1000$ kg/m³

DASY4 Configuration:

- Probe: ET3DV6R - SN1397; ConvF(6.22, 6.22, 6.22); Calibrated: 4/22/2005
- Sensor-Surface: 4mm (Mechanical Surface Detection)
- Electronics: DAE3 Sn440; Calibrated: 2/21/2005
- Phantom: R3: Sect.2, Amy Twin; Type: Amy Twin Flat; Serial: n/a;
- Measurement SW: DASY4, V4.6 Build 23; Postprocessing SW: SEMCAD, V1.8 Build 147

Amy Twin Phone Template/Area Scan - Normal Body (15mm) (13x7x1):

Measurement grid: dx=15mm, dy=15mm

Maximum value of SAR (measured) = 1.49 mW/g

Amy Twin Phone Template/Zoom Scan (7x7x7)/Cube 0:

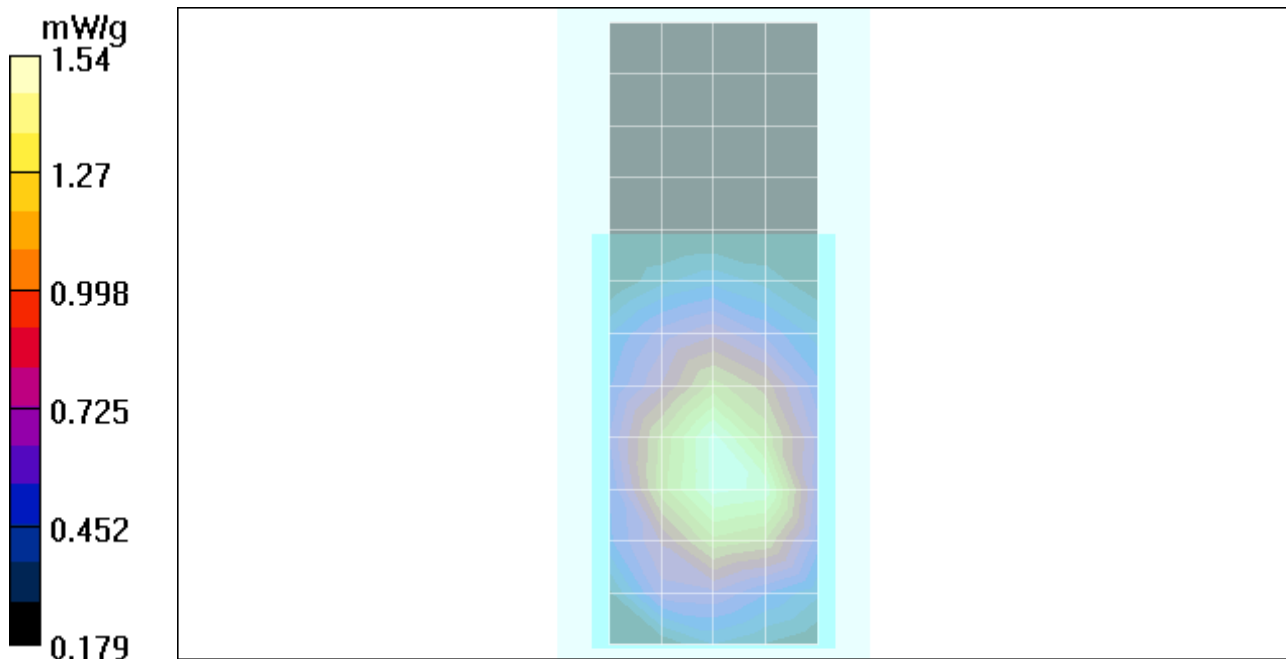
Measurement grid: dx=5mm, dy=5mm, dz=5mm

Reference Value = 39.0 V/m; Power Drift = -0.032 dB

Peak SAR (extrapolated) = 1.75 W/kg

SAR(1 g) = 1.39 mW/g; SAR(10 g) = 1.04 mW/g

Maximum value of SAR (measured) = 1.54 mW/g



Date/Time: 12/12/2005 2:03:05 PM

Test Laboratory: Motorola

1900 EVDO Back 15mm ch1175

Serial: 5281C085

Procedure Notes: Pwr Step: Always Up Antenna Position: Internal Battery Model #: SNN5783A

Accessory Model # = Back of Phone 15mm from Phantom Note: EVDO mode

Communication System: CDMA 1900; Frequency: 1908.75 MHz; Channel Number: 1175; Duty Cycle: 1:1

Medium: Regular Glycol Body; Medium parameters used: $\sigma = 1.59$ mho/m, $\epsilon_r = 50.9$; $\rho = 1000$ kg/m³

DASY4 Configuration:

- Probe: ET3DV6R - SN1397; ConvF(4.77, 4.77, 4.77); Calibrated: 4/22/2005
- Sensor-Surface: 4mm (Mechanical Surface Detection)
- Electronics: DAE3 Sn440; Calibrated: 2/21/2005
- Phantom: R3: Sect.1, Amy Twin; Type: Amy Twin Flat; Serial: n/a;
- Measurement SW: DASY4, V4.6 Build 23; Postprocessing SW: SEMCAD, V1.8 Build 147

Amy Twin Phone Template/Area Scan - Normal Body (15mm) (13x7x1):

Measurement grid: dx=15mm, dy=15mm

Maximum value of SAR (measured) = 1.14 mW/g

Amy Twin Phone Template/Zoom Scan (7x7x7)/Cube 0:

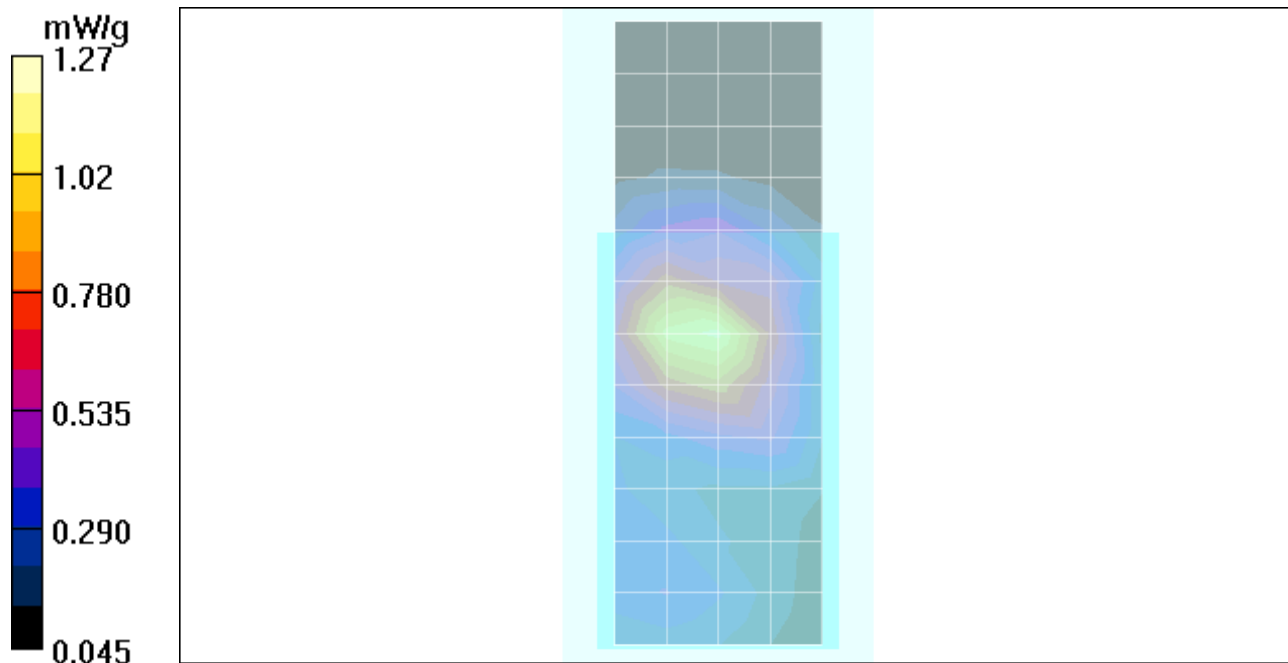
Measurement grid: dx=5mm, dy=5mm, dz=5mm

Reference Value = 28.0 V/m; Power Drift = -0.243 dB

Peak SAR (extrapolated) = 2.14 W/kg

SAR(1 g) = 1.06 mW/g; SAR(10 g) = 0.646 mW/g

Maximum value of SAR (measured) = 1.27 mW/g



Date/Time: 10/23/2006 3:26:18 PM

Test Laboratory: Motorola

WiFi - Body Worn Position

Procedure Notes: Test Mode Antenna Position: INTERNAL Battery Model #: SNN5783B Accessory 1: 802.11 card Accessory Model 2 : Holster Rotated 90 Counter-Clockwise

Communication System: Wi-Fi 2450; Frequency: 2437 MHz; Communication System Channel Number: 6; Duty Cycle: 1:1

Medium: 2450 Glycol Body; Medium parameters used: $f = 2450$ MHz; $\sigma = 2.03$ mho/m; $\epsilon_r = 54.4$; $\rho = 1000$ kg/m³

DASY4 Configuration:

- Probe: ET3DV6R - SN1506; ConvF(3.97, 3.97, 3.97); Calibrated: 5/30/2006
- Sensor-Surface: 4mm (Mechanical Surface Detection)
- Electronics: DAE4 Sn650; Calibrated: 8/22/2006
- Phantom: R2 Sect 1, Amy Twin, Rev2 (23-June-04); Type: Amy Twin Flat; Serial: n/a;
- Measurement SW: DASY4, V4.7 Build 44; Postprocessing SW: SEMCAD, V1.8 Build 171

Amy Twin Phone Template/Area Scan - Normal Body (15mm) (13x7x1): Measurement grid: dx=15mm, dy=15mm

Maximum value of SAR (measured) = 0.077 mW/g

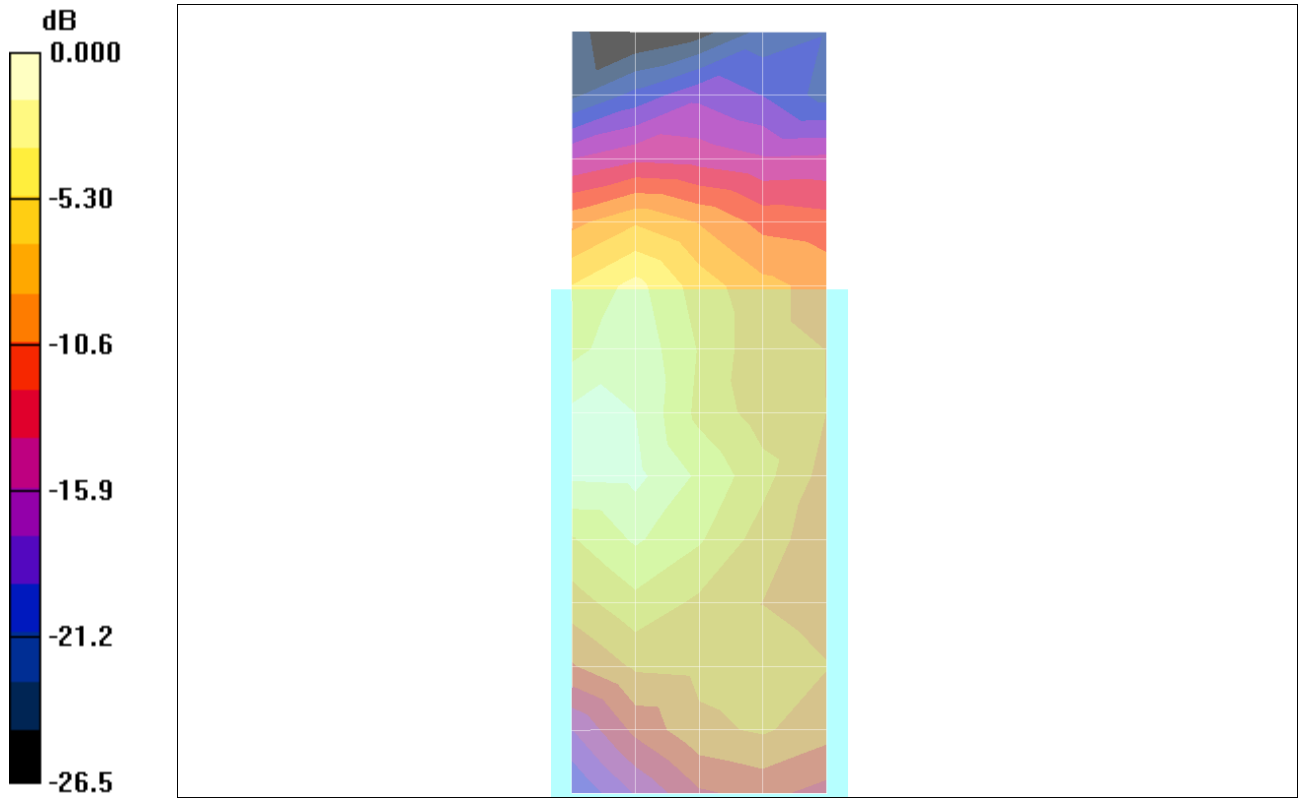
Amy Twin Phone Template/Zoom Scan (7x7x7)/Cube 0: Measurement grid: dx=5mm, dy=5mm, dz=5mm

Reference Value = 5.85 V/m; Power Drift = -0.150 dB

Peak SAR (extrapolated) = 0.208 W/kg

SAR(1 g) = 0.093 mW/g; SAR(10 g) = 0.047 mW/g

Maximum value of SAR (measured) = 0.103 mW/g



0 dB = 0.103mW/g

Appendix 4
Probe Calibration Certificate



Accredited by the Swiss Federal Office of Metrology and Accreditation
The Swiss Accreditation Service is one of the signatories to the EA
Multilateral Agreement for the recognition of calibration certificates

Accreditation No.: **SCS 108**

Client **Motorola MDb**

Certificate No. **ET3-1397_Apr05**

CALIBRATION CERTIFICATE

Object **ET3DV6R SN:1397**

Calibration procedure(s) **QA-CAL-01 v5
Calibration procedure for dosimetric E-field probes**

Calibration date: **April 22, 2005**

Condition of the calibrated item **In Tolerance**

This calibration certificate documents the traceability to national standards, which realize the physical units of measurements (SI).
The measurements and the uncertainties with confidence probability are given on the following pages and are part of the certificate.

All calibrations have been conducted in the closed laboratory facility: environment temperature $(22 \pm 3)^\circ\text{C}$ and humidity $< 70\%$.

Calibration Equipment used (M&TE critical for calibration)

Primary Standards	ID #	Cal Date (Calibrated by, Certificate No.)	Scheduled Calibration
Power meter E4419B	GB41293874	5-May-04 (METAS, No. 251-00388)	May-05
Power sensor E4412A	MY41495277	5-May-04 (METAS, No. 251-00388)	May-05
Reference 3 dB Attenuator	SN: S5054 (3c)	10-Aug-04 (METAS, No. 251-00403)	Aug-05
Reference 20 dB Attenuator	SN: S5086 (20b)	3-May-04 (METAS, No. 251-00389)	May-05
Reference 30 dB Attenuator	SN: S5129 (30b)	10-Aug-04 (METAS, No. 251-00404)	Aug-05
Reference Probe ES3DV2	SN: 3013	7-Jan-05 (SPEAG, No. ES3-3013_Jan05)	Jan-06
DAE4	SN: 617	19-Jan-05 (SPEAG, No. DAE4-617_Jan05)	Jan-06

Secondary Standards	ID #	Check Date (in house)	Scheduled Check
Power sensor HP 8481A	MY41092180	18-Sep-02 (SPEAG, in house check Oct-03)	In house check: Oct 05
RF generator HP 8648C	US3642U01700	4-Aug-99 (SPEAG, in house check Dec-03)	In house check: Dec-05
Network Analyzer HP 8753E	US37390585	18-Oct-01 (SPEAG, in house check Nov-04)	In house check: Nov 05

	Name	Function	Signature
Calibrated by:	Nico Vetterli	Laboratory Technician	
Approved by:	Katja Pokovic	Technical Manager	

Issued: April 25, 2005

This calibration certificate shall not be reproduced except in full without written approval of the laboratory.



Accredited by the Swiss Federal Office of Metrology and Accreditation
The Swiss Accreditation Service is one of the signatories to the EA
Multilateral Agreement for the recognition of calibration certificates

Accreditation No.: **SCS 108**

Glossary:

TSL	tissue simulating liquid
NORM _{x,y,z}	sensitivity in free space
ConF	sensitivity in TSL / NORM _{x,y,z}
DCP	diode compression point
Polarization ϕ	ϕ rotation around probe axis
Polarization ϑ	ϑ rotation around an axis that is in the plane normal to probe axis (at measurement center), i.e., $\vartheta = 0$ is normal to probe axis

Calibration is Performed According to the Following Standards:

- IEEE Std 1528-2003, "IEEE Recommended Practice for Determining the Peak Spatial-Averaged Specific Absorption Rate (SAR) in the Human Head from Wireless Communications Devices: Measurement Techniques", December 2003
- CENELEC EN 50361, "Basic standard for the measurement of Specific Absorption Rate related to human exposure to electromagnetic fields from mobile phones (300 MHz - 3 GHz), July 2001

Methods Applied and Interpretation of Parameters:

- NORM_{x,y,z}**: Assessed for E-field polarization $\vartheta = 0$ ($f \leq 900$ MHz in TEM-cell; $f > 1800$ MHz: R22 waveguide). NORM_{x,y,z} are only intermediate values, i.e., the uncertainties of NORM_{x,y,z} does not effect the E²-field uncertainty inside TSL (see below *ConvF*).
- NORM(f)_{x,y,z}** = NORM_{x,y,z} * *frequency_response* (see Frequency Response Chart). This linearization is implemented in DASY4 software versions later than 4.2. The uncertainty of the frequency response is included in the stated uncertainty of *ConvF*.
- DCP_{x,y,z}**: DCP are numerical linearization parameters assessed based on the data of power sweep (no uncertainty required). DCP does not depend on frequency nor media.
- ConvF and Boundary Effect Parameters**: Assessed in flat phantom using E-field (or Temperature Transfer Standard for $f \leq 800$ MHz) and inside waveguide using analytical field distributions based on power measurements for $f > 800$ MHz. The same setups are used for assessment of the parameters applied for boundary compensation (alpha, depth) of which typical uncertainty values are given. These parameters are used in DASY4 software to improve probe accuracy close to the boundary. The sensitivity in TSL corresponds to NORM_{x,y,z} * *ConvF* whereby the uncertainty corresponds to that given for *ConvF*. A frequency dependent *ConvF* is used in DASY version 4.4 and higher which allows extending the validity from ± 50 MHz to ± 100 MHz.
- Spherical isotropy (3D deviation from isotropy)**: in a field of low gradients realized using a flat phantom exposed by a patch antenna.
- Sensor Offset**: The sensor offset corresponds to the offset of virtual measurement center from the probe tip (on probe axis). No tolerance required.

Probe ET3DV6R

SN:1397

Manufactured:	October 24, 1999
Last calibrated:	May 21, 2004
Recalibrated:	April 22, 2005

Calibrated for DASY Systems

(Note: non-compatible with DASY2 system!)

DASY - Parameters of Probe: ET3DV6R SN:1397**Sensitivity in Free Space^A****Diode Compression^B**

NormX	1.81 ± 10.1%	$\mu\text{V}/(\text{V}/\text{m})^2$	DCP X	95 mV
NormY	1.69 ± 10.1%	$\mu\text{V}/(\text{V}/\text{m})^2$	DCP Y	95 mV
NormZ	1.95 ± 10.1%	$\mu\text{V}/(\text{V}/\text{m})^2$	DCP Z	95 mV

Sensitivity in Tissue Simulating Liquid (Conversion Factors)

Please see Page 8.

Boundary Effect

TSL **900 MHz** **Typical SAR gradient: 5 % per mm**

Sensor Center to Phantom Surface Distance		3.7 mm	4.7 mm
SAR _{be} [%]	Without Correction Algorithm	9.2	4.7
SAR _{be} [%]	With Correction Algorithm	0.1	0.2

TSL **1810 MHz** **Typical SAR gradient: 10 % per mm**

Sensor Center to Phantom Surface Distance		3.7 mm	4.7 mm
SAR _{be} [%]	Without Correction Algorithm	13.5	9.1
SAR _{be} [%]	With Correction Algorithm	0.8	0.1

Sensor Offset

Probe Tip to Sensor Center **2.7 mm**

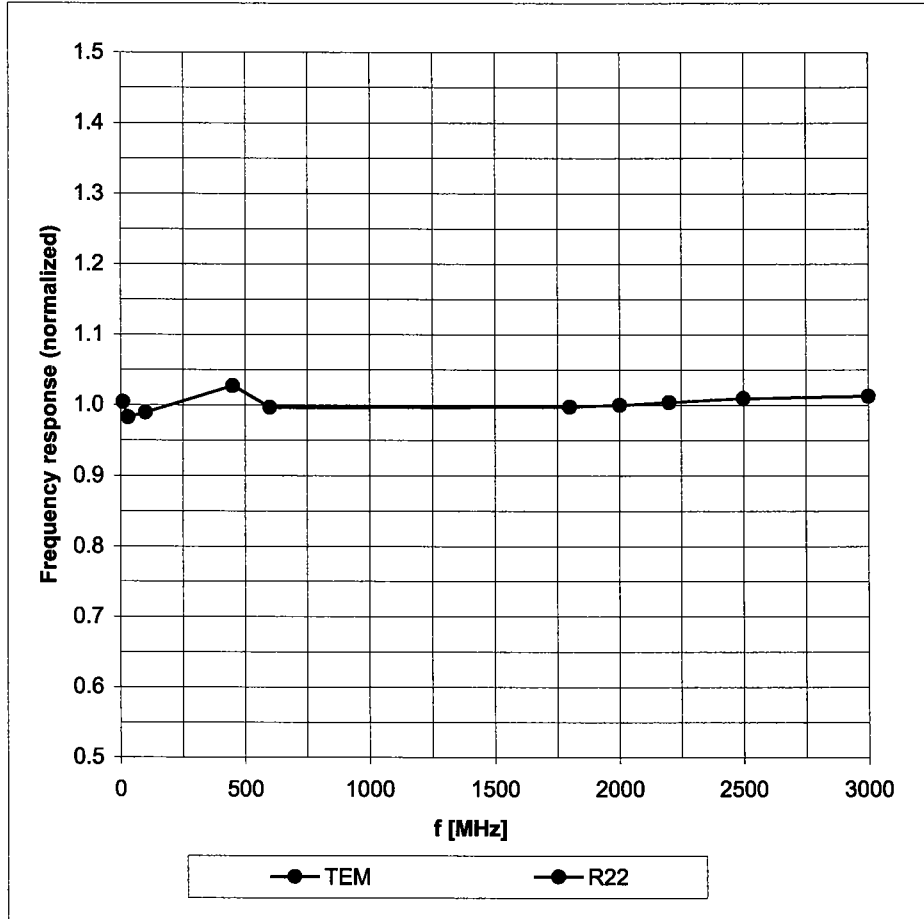
The reported uncertainty of measurement is stated as the standard uncertainty of measurement multiplied by the coverage factor k=2, which for a normal distribution corresponds to a coverage probability of approximately 95%.

^A The uncertainties of NormX,Y,Z do not affect the E²-field uncertainty inside TSL (see Page 8).

^B Numerical linearization parameter: uncertainty not required.

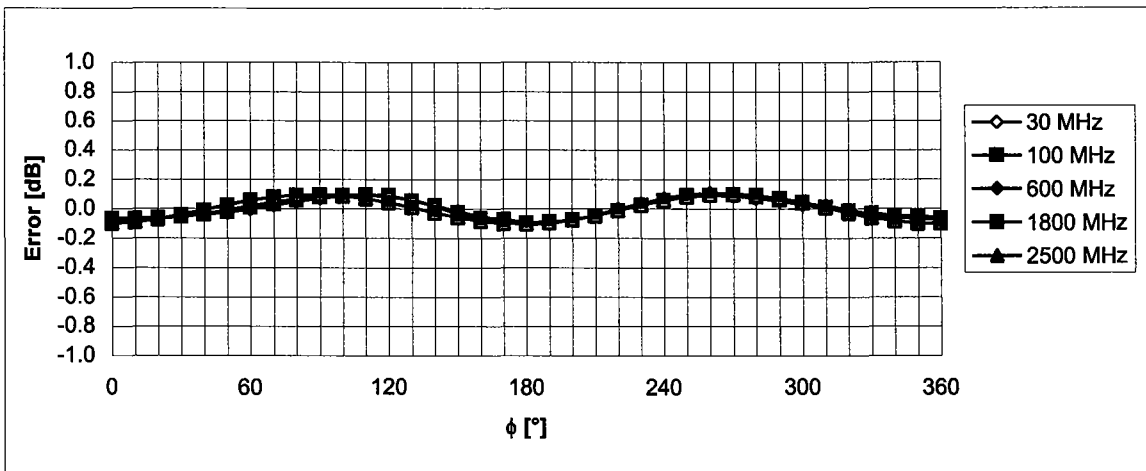
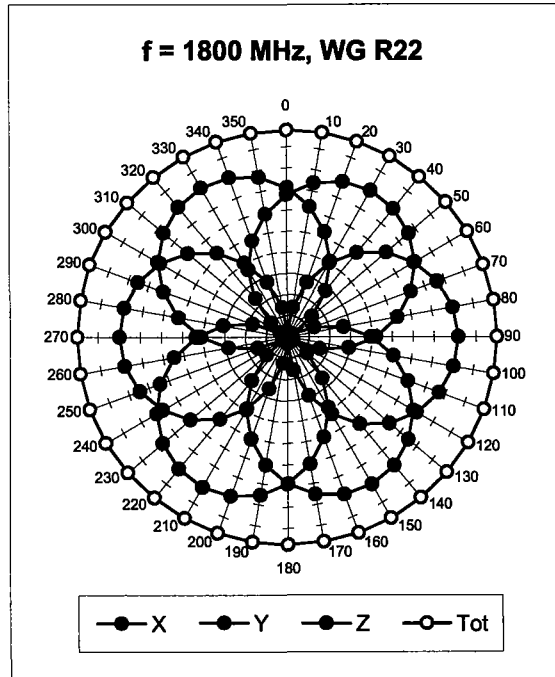
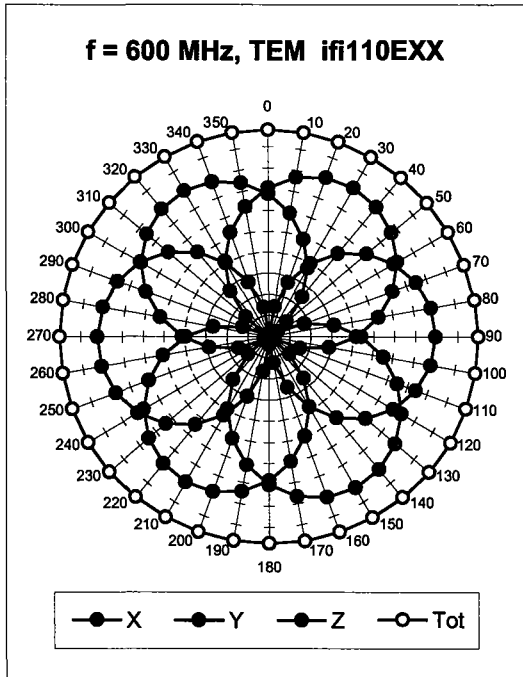
Frequency Response of E-Field

(TEM-Cell:ifi110 EXX, Waveguide: R22)



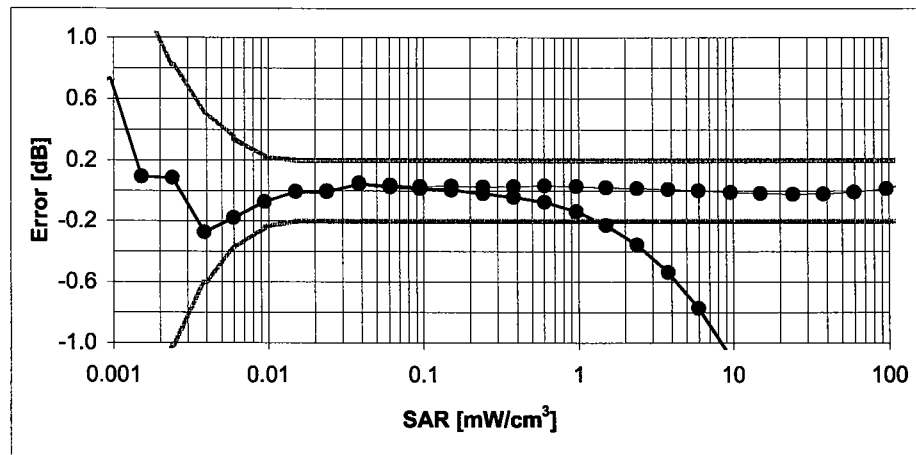
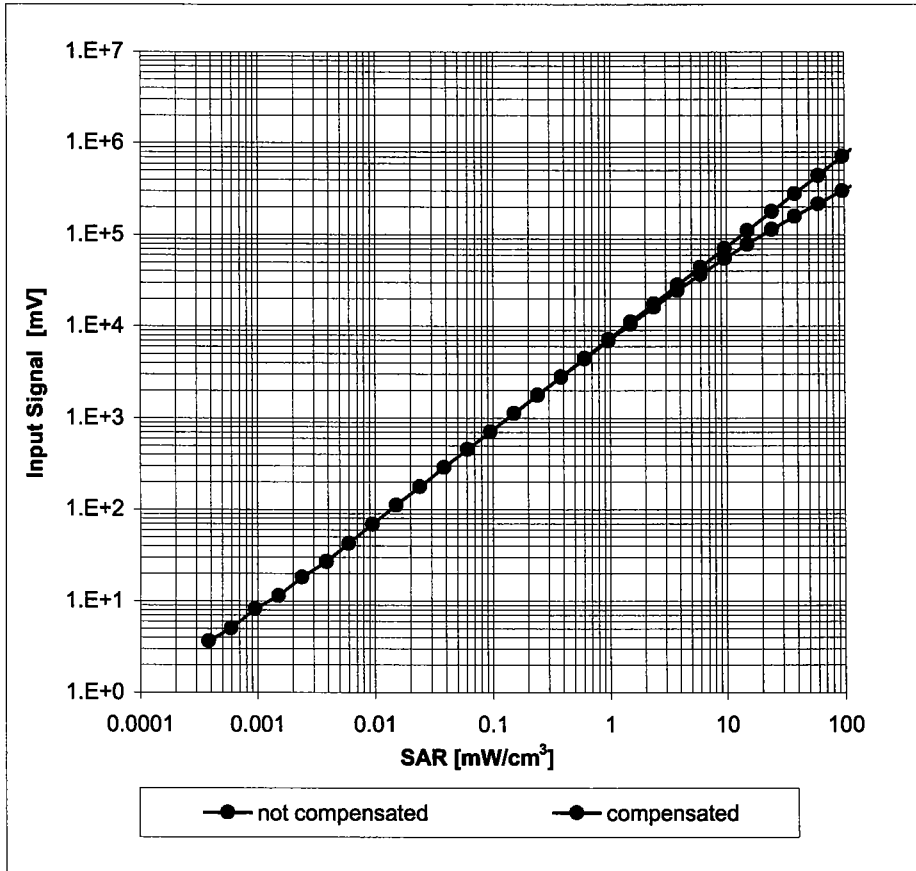
Uncertainty of Frequency Response of E-field: $\pm 6.3\%$ ($k=2$)

Receiving Pattern (ϕ), $\vartheta = 0^\circ$



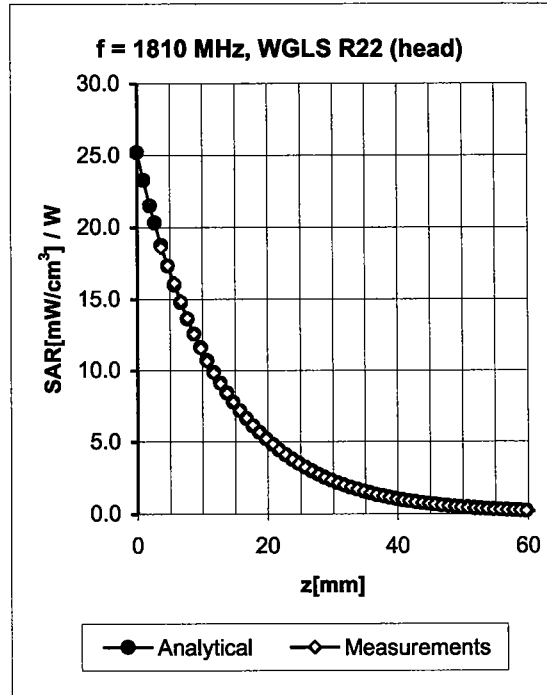
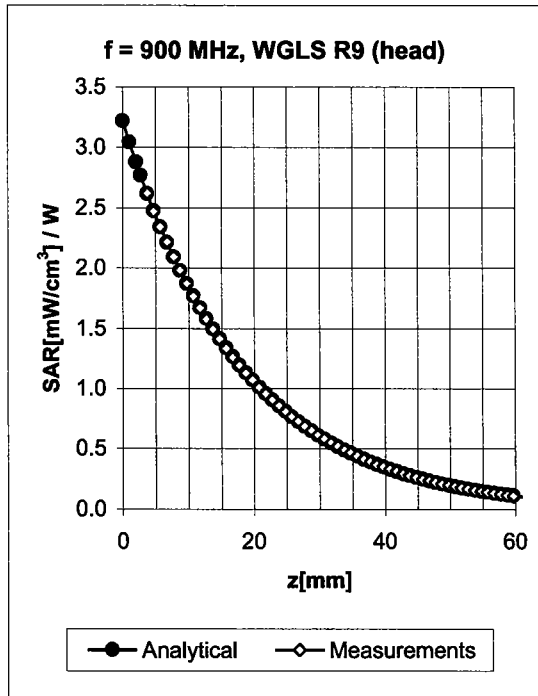
Uncertainty of Axial Isotropy Assessment: $\pm 0.5\%$ ($k=2$)

Dynamic Range $f(\text{SAR}_{\text{head}})$ (Waveguide R22, $f = 1800 \text{ MHz}$)



Uncertainty of Linearity Assessment: $\pm 0.6\%$ ($k=2$)

Conversion Factor Assessment

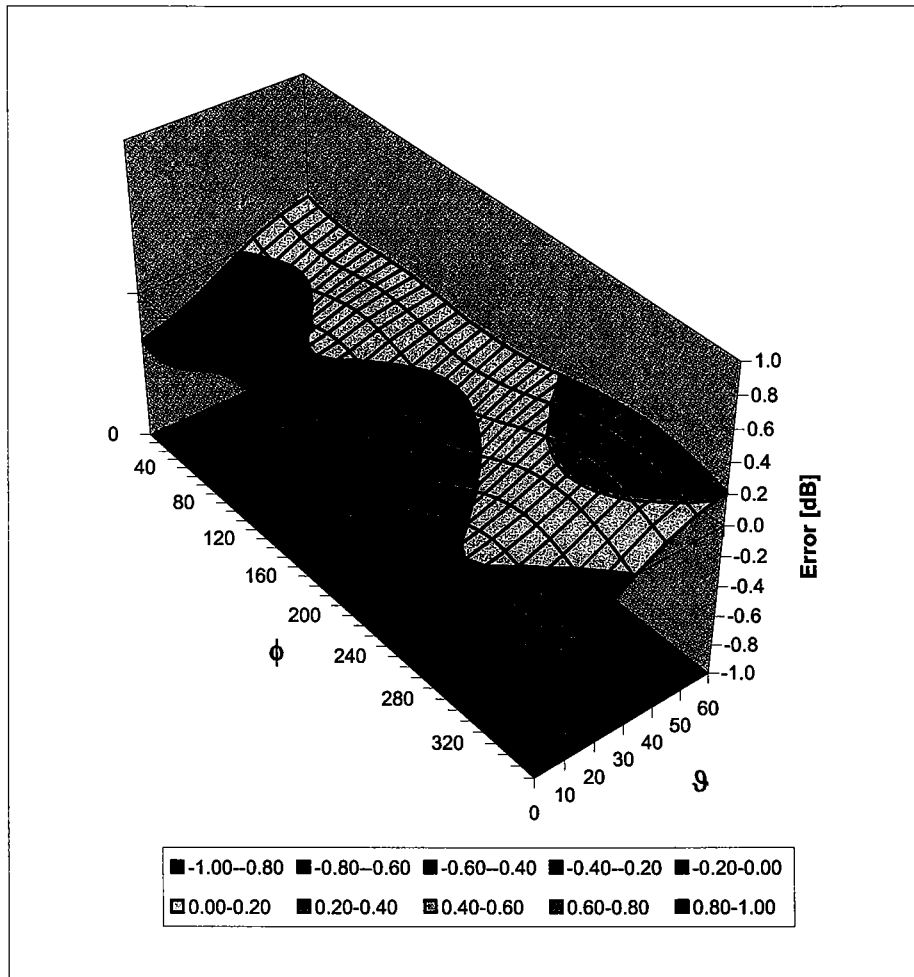


f [MHz]	Validity [MHz] ^c	TSL	Permittivity	Conductivity	Alpha	Depth	ConvF Uncertainty
900	± 50 / ± 100	Head	41.5 ± 5%	0.97 ± 5%	0.71	1.73	6.38 ± 11.0% (k=2)
1810	± 50 / ± 100	Head	40.0 ± 5%	1.40 ± 5%	0.60	2.37	5.17 ± 11.0% (k=2)
1950	± 50 / ± 100	Head	40.0 ± 5%	1.40 ± 5%	0.59	2.49	4.90 ± 11.0% (k=2)
900	± 50 / ± 100	Body	55.0 ± 5%	1.05 ± 5%	0.58	2.00	6.22 ± 11.0% (k=2)
1810	± 50 / ± 100	Body	53.3 ± 5%	1.52 ± 5%	0.57	2.75	4.77 ± 11.0% (k=2)
1950	± 50 / ± 100	Body	53.3 ± 5%	1.52 ± 5%	0.60	2.53	4.44 ± 11.0% (k=2)

^c The validity of ± 100 MHz only applies for DASY v4.4 and higher (see Page 2). The uncertainty is the RSS of the ConvF uncertainty at calibration frequency and the uncertainty for the indicated frequency band.

Deviation from Isotropy in HSL

Error (ϕ, ϑ), $f = 900$ MHz



Uncertainty of Spherical Isotropy Assessment: $\pm 2.6\%$ ($k=2$)



Accredited by the Swiss Federal Office of Metrology and Accreditation
The Swiss Accreditation Service is one of the signatories to the EA
Multilateral Agreement for the recognition of calibration certificates

Accreditation No.: **SCS 108**

Client **Motorola MDb**

Certificate No. **ET3-1506_May05**

CALIBRATION CERTIFICATE

Object **ET3DV6R - SN:1506**

Calibration procedure(s) **QA CAL-01 v5
Calibration procedure for dosimetric E-field probes**

Calibration date: **May 26, 2005**

Condition of the calibrated item **In Tolerance**

This calibration certificate documents the traceability to national standards, which realize the physical units of measurements (SI).
The measurements and the uncertainties with confidence probability are given on the following pages and are part of the certificate.

All calibrations have been conducted in the closed laboratory facility: environment temperature (22 ± 3)°C and humidity < 70%.

Calibration Equipment used (M&TE critical for calibration)

Primary Standards	ID #	Cal Date (Calibrated by, Certificate No.)	Scheduled Calibration
Power meter E4419B	GB41293874	3-May-05 (METAS, No. 251-00466)	May-06
Power sensor E4412A	MY41495277	3-May-05 (METAS, No. 251-00466)	May-06
Power sensor E4412A	MY41498087	3-May-05 (METAS, No. 251-00466)	May-06
Reference 3 dB Attenuator	SN: S5054 (3c)	10-Aug-04 (METAS, No. 251-00403)	Aug-05
Reference 20 dB Attenuator	SN: S5086 (20b)	3-May-05 (METAS, No. 251-00467)	May-06
Reference 30 dB Attenuator	SN: S5129 (30b)	10-Aug-04 (METAS, No. 251-00404)	Aug-05
Reference Probe ES3DV2	SN: 3013	7-Jan-05 (SPEAG, No. ES3-3013_Jan05)	Jan-06
DAE4	SN: 617	19-Jan-05 (SPEAG, No. DAE4-617_Jan05)	Jan-06
Secondary Standards	ID #	Check Date (in house)	Scheduled Check
RF generator HP 8648C	US3642U01700	4-Aug-99 (SPEAG, in house check Dec-03)	In house check: Dec-05
Network Analyzer HP 8753E	US37390585	18-Oct-01 (SPEAG, in house check Nov-04)	In house check: Nov 05

Calibrated by:	Name	Function	Signature
	Nico Vetterli	Laboratory Technician	
Approved by:	Katja Pokovic	Technical Manager	

Issued: May 26, 2005

This calibration certificate shall not be reproduced except in full without written approval of the laboratory.



Accredited by the Swiss Federal Office of Metrology and Accreditation
The Swiss Accreditation Service is one of the signatories to the EA
Multilateral Agreement for the recognition of calibration certificates

Accreditation No.: **SCS 108**

Glossary:

TSL	tissue simulating liquid
NORM _{x,y,z}	sensitivity in free space
ConF	sensitivity in TSL / NORM _{x,y,z}
DCP	diode compression point
Polarization φ	φ rotation around probe axis
Polarization ϑ	ϑ rotation around an axis that is in the plane normal to probe axis (at measurement center), i.e., $\vartheta = 0$ is normal to probe axis

Calibration is Performed According to the Following Standards:

- IEEE Std 1528-2003, "IEEE Recommended Practice for Determining the Peak Spatial-Averaged Specific Absorption Rate (SAR) in the Human Head from Wireless Communications Devices: Measurement Techniques", December 2003
- CENELEC EN 50361, "Basic standard for the measurement of Specific Absorption Rate related to human exposure to electromagnetic fields from mobile phones (300 MHz - 3 GHz), July 2001

Methods Applied and Interpretation of Parameters:

- NORM_{x,y,z}**: Assessed for E-field polarization $\vartheta = 0$ ($f \leq 900$ MHz in TEM-cell; $f > 1800$ MHz: R22 waveguide). NORM_{x,y,z} are only intermediate values, i.e., the uncertainties of NORM_{x,y,z} does not effect the E^2 -field uncertainty inside TSL (see below *ConvF*).
- NORM(f)_{x,y,z}** = NORM_{x,y,z} * *frequency_response* (see Frequency Response Chart). This linearization is implemented in DASY4 software versions later than 4.2. The uncertainty of the frequency response is included in the stated uncertainty of *ConvF*.
- DCP_{x,y,z}**: DCP are numerical linearization parameters assessed based on the data of power sweep (no uncertainty required). DCP does not depend on frequency nor media.
- ConvF and Boundary Effect Parameters**: Assessed in flat phantom using E-field (or Temperature Transfer Standard for $f \leq 800$ MHz) and inside waveguide using analytical field distributions based on power measurements for $f > 800$ MHz. The same setups are used for assessment of the parameters applied for boundary compensation (alpha, depth) of which typical uncertainty values are given. These parameters are used in DASY4 software to improve probe accuracy close to the boundary. The sensitivity in TSL corresponds to NORM_{x,y,z} * *ConvF* whereby the uncertainty corresponds to that given for *ConvF*. A frequency dependent *ConvF* is used in DASY version 4.4 and higher which allows extending the validity from ± 50 MHz to ± 100 MHz.
- Spherical isotropy (3D deviation from isotropy)**: in a field of low gradients realized using a flat phantom exposed by a patch antenna.
- Sensor Offset**: The sensor offset corresponds to the offset of virtual measurement center from the probe tip (on probe axis). No tolerance required.

Probe ET3DV6R

SN:1506

Manufactured:	October 24, 1999
Last calibrated:	May 27, 2004
Recalibrated:	May 26, 2005

Calibrated for DASY Systems

(Note: non-compatible with DASY2 system!)

DASY - Parameters of Probe: ET3DV6R SN:1506**Sensitivity in Free Space^A****Diode Compression^B**

NormX	2.27 ± 10.1%	$\mu V/(V/m)^2$	DCP X	97 mV
NormY	2.08 ± 10.1%	$\mu V/(V/m)^2$	DCP Y	97 mV
NormZ	1.27 ± 10.1%	$\mu V/(V/m)^2$	DCP Z	97 mV

Sensitivity in Tissue Simulating Liquid (Conversion Factors)

Please see Page 8.

Boundary Effect**TSL 900 MHz Typical SAR gradient: 5 % per mm**

Sensor Center to Phantom Surface Distance		3.7 mm	4.7 mm
SAR _{be} [%]	Without Correction Algorithm	11.1	5.7
SAR _{be} [%]	With Correction Algorithm	0.1	0.3

TSL 1810 MHz Typical SAR gradient: 10 % per mm

Sensor Center to Phantom Surface Distance		3.7 mm	4.7 mm
SAR _{be} [%]	Without Correction Algorithm	14.8	9.4
SAR _{be} [%]	With Correction Algorithm	0.9	0.0

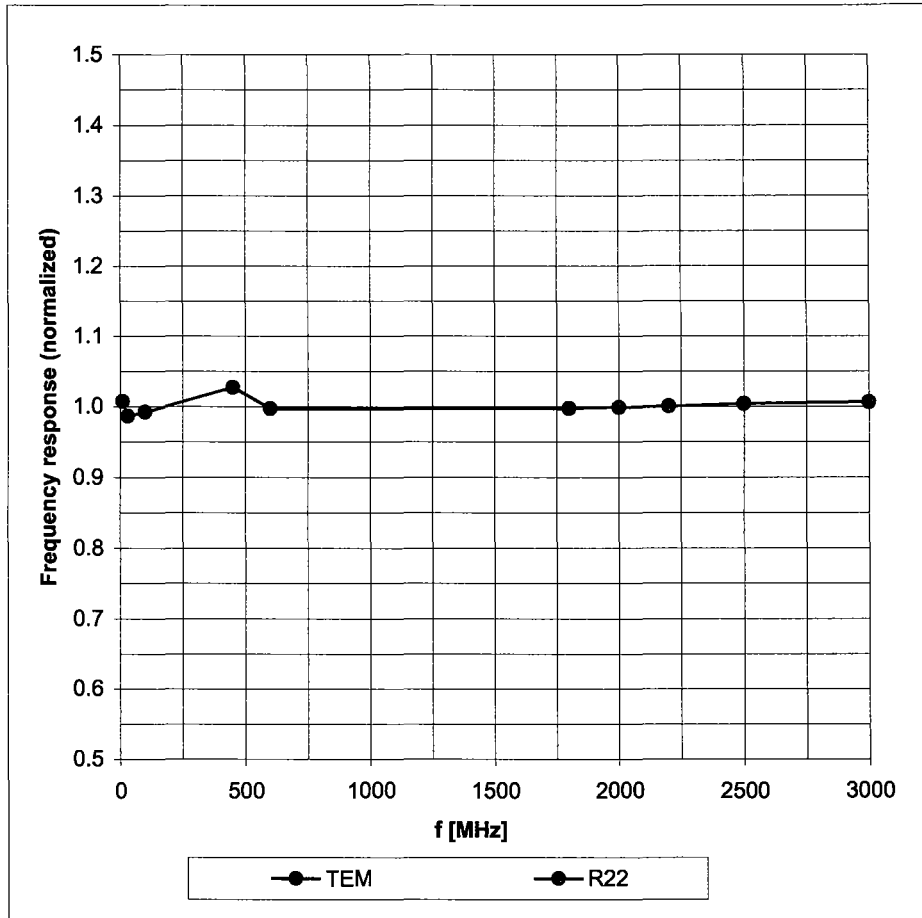
Sensor OffsetProbe Tip to Sensor Center **2.7 mm**

The reported uncertainty of measurement is stated as the standard uncertainty of measurement multiplied by the coverage factor k=2, which for a normal distribution corresponds to a coverage probability of approximately 95%.

^A The uncertainties of NormX,Y,Z do not affect the E²-field uncertainty inside TSL (see Page 8).^B Numerical linearization parameter: uncertainty not required.

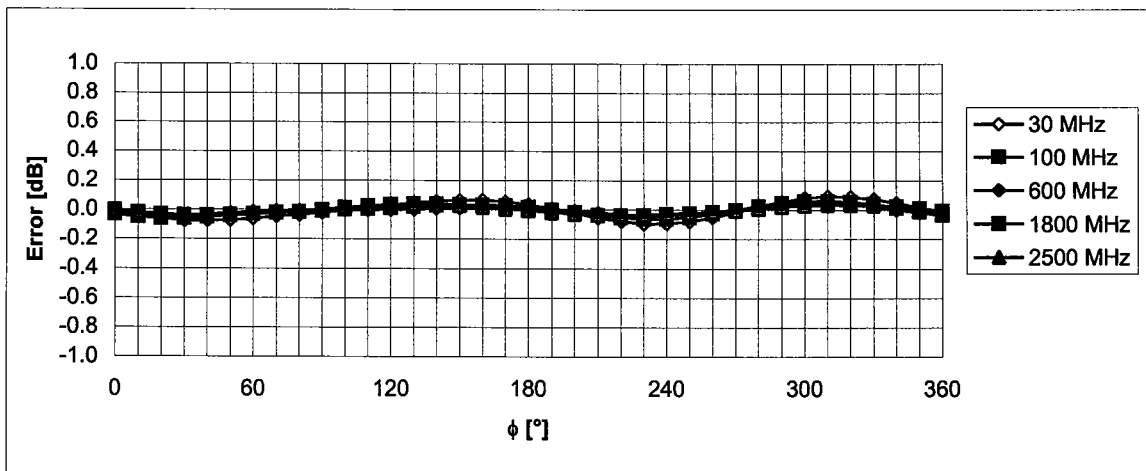
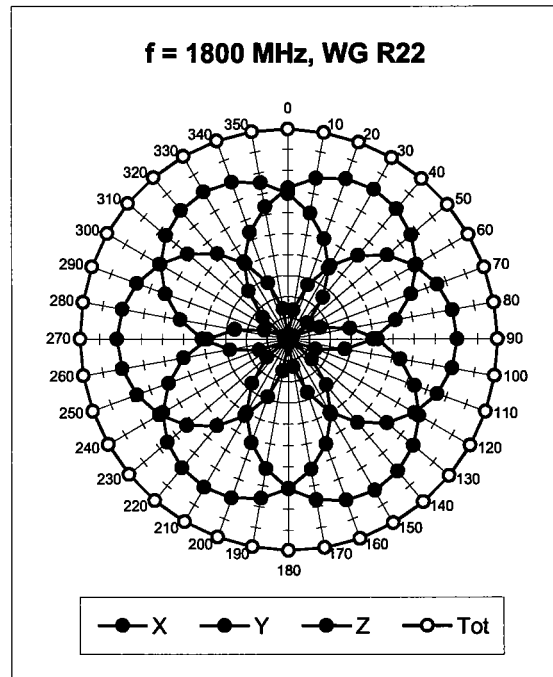
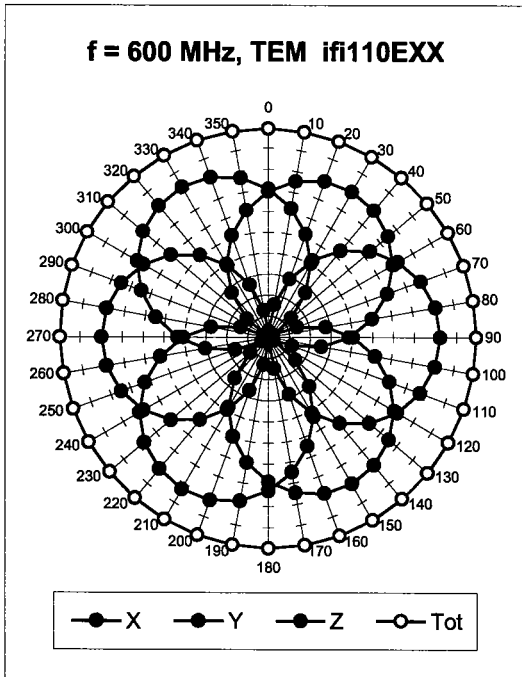
Frequency Response of E-Field

(TEM-Cell:ifi110 EXX, Waveguide: R22)



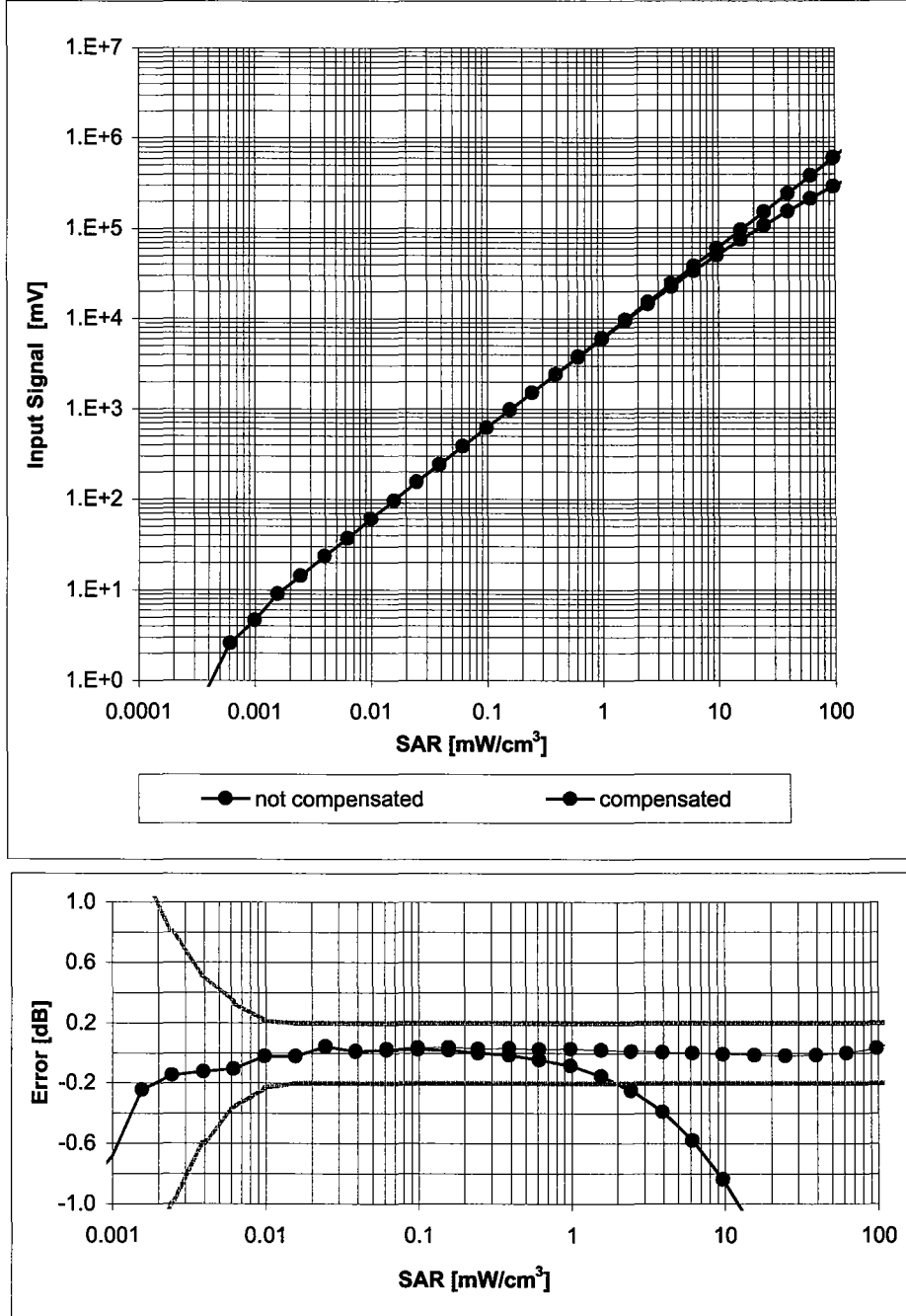
Uncertainty of Frequency Response of E-field: $\pm 6.3\%$ ($k=2$)

Receiving Pattern (ϕ), $\vartheta = 0^\circ$



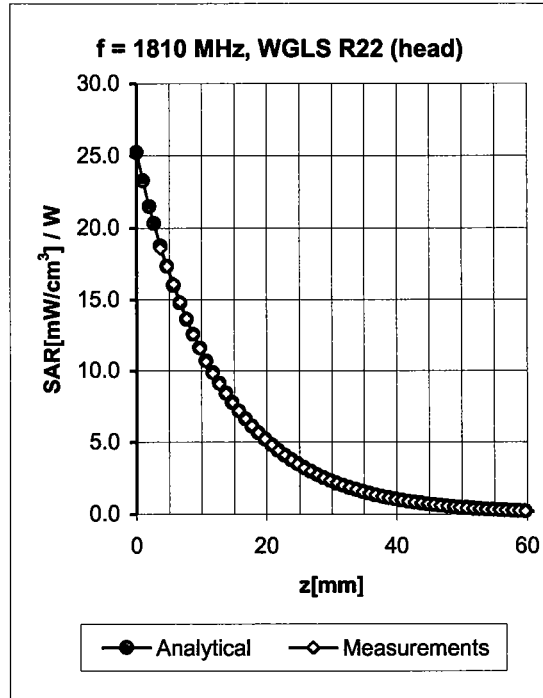
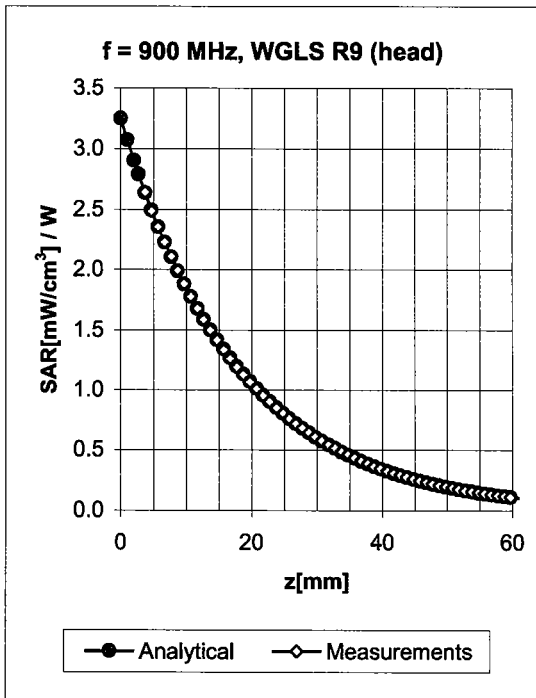
Uncertainty of Axial Isotropy Assessment: $\pm 0.5\%$ ($k=2$)

Dynamic Range $f(SAR_{head})$ (Waveguide R22, $f = 1800$ MHz)



Uncertainty of Linearity Assessment: $\pm 0.6\%$ ($k=2$)

Conversion Factor Assessment

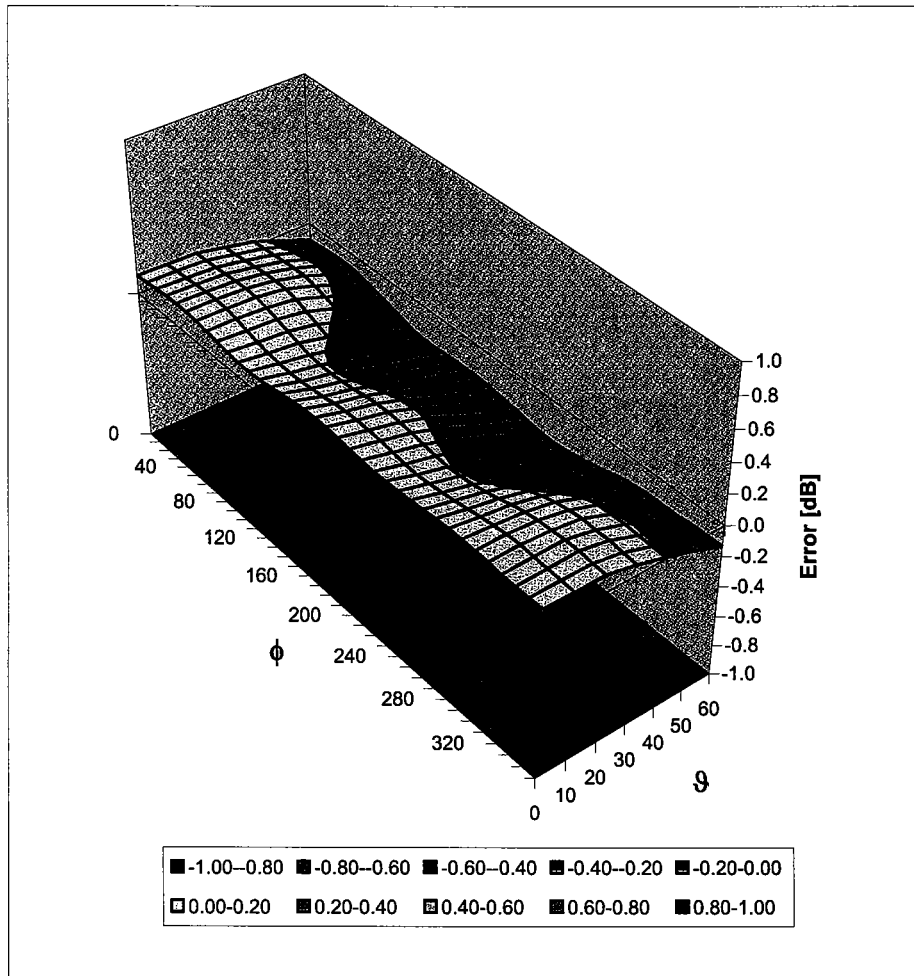


f [MHz]	Validity [MHz] ^c	TSL	Permittivity	Conductivity	Alpha	Depth	ConvF Uncertainty
900	± 50 / ± 100	Head	41.5 ± 5%	0.97 ± 5%	0.79	1.78	5.89 ± 11.0% (k=2)
1810	± 50 / ± 100	Head	40.0 ± 5%	1.40 ± 5%	0.77	2.15	4.83 ± 11.0% (k=2)
1950	± 50 / ± 100	Head	40.0 ± 5%	1.40 ± 5%	0.71	2.29	4.53 ± 11.0% (k=2)
2450	± 50 / ± 100	Head	39.2 ± 5%	1.80 ± 5%	0.85	2.02	4.22 ± 11.8% (k=2)
900	± 50 / ± 100	Body	55.0 ± 5%	1.05 ± 5%	0.68	1.91	5.55 ± 11.0% (k=2)
1810	± 50 / ± 100	Body	53.3 ± 5%	1.52 ± 5%	0.70	2.51	4.30 ± 11.0% (k=2)
1950	± 50 / ± 100	Body	53.3 ± 5%	1.52 ± 5%	0.76	2.28	4.08 ± 11.0% (k=2)
2450	± 50 / ± 100	Body	52.7 ± 5%	1.95 ± 5%	1.03	1.72	3.97 ± 11.8% (k=2)

^c The validity of ± 100 MHz only applies for DASY v4.4 and higher (see Page 2). The uncertainty is the RSS of the ConvF uncertainty at calibration frequency and the uncertainty for the indicated frequency band.

Deviation from Isotropy in HSL

Error (ϕ , θ), $f = 900$ MHz



Uncertainty of Spherical Isotropy Assessment: $\pm 2.6\%$ ($k=2$)



Accredited by the Swiss Federal Office of Metrology and Accreditation
The Swiss Accreditation Service is one of the signatories to the EA
Multilateral Agreement for the recognition of calibration certificates

Accreditation No.: SCS 108

Client **Motorola MDb**

Certificate No. **ET3-1506_May06**

CALIBRATION CERTIFICATE

Object **ET3DV6R - SN: 1506**

Calibration procedure(s) **QA CAL-01-v5
Calibration procedure for dosimetric E-field probes**

Calibration date: **May 30, 2006**

Condition of the calibrated item **In Tolerance**

This calibration certificate documents the traceability to national standards, which realize the physical units of measurements (SI).
The measurements and the uncertainties with confidence probability are given on the following pages and are part of the certificate.

All calibrations have been conducted in the closed laboratory facility: environment temperature (22 ± 3)°C and humidity < 70%.

Calibration Equipment used (M&TE critical for calibration)

Primary Standards	ID #	Cal Date (Calibrated by, Certificate No.)	Scheduled Calibration
Power meter E4419B	GB41293874	5-Apr-06 (METAS, No. 251-00557)	Apr-07
Power sensor E4412A	MY41495277	5-Apr-06 (METAS, No. 251-00557)	Apr-07
Power sensor E4412A	MY41498087	5-Apr-06 (METAS, No. 251-00557)	Apr-07
Reference 3 dB Attenuator	SN: S5054 (3c)	11-Aug-05 (METAS, No. 251-00499)	Aug-06
Reference 20 dB Attenuator	SN: S5086 (20b)	4-Apr-06 (METAS, No. 251-00558)	Apr-07
Reference 30 dB Attenuator	SN: S5129 (30b)	11-Aug-05 (METAS, No. 251-00500)	Aug-06
Reference Probe ES3DV2	SN: 3013	2-Jan-06 (SPEAG, No. ES3-3013_Jan06)	Jan-07
DAE4	SN: 654	2-Feb-06 (SPEAG, No. DAE4-654_Feb06)	Feb-07
Secondary Standards	ID #	Check Date (in house)	Scheduled Check
RF generator HP 8648C	US3642U01700	4-Aug-99 (SPEAG, in house check Nov-05)	In house check: Nov-07
Network Analyzer HP 8753E	US37390585	18-Oct-01 (SPEAG, in house check Nov-05)	In house check: Nov 06

	Name	Function	Signature
Calibrated by:	Katja Pokovic	Technical Manager	
Approved by:	Niels Kuster	Quality Manager	

Issued: May 31, 2006

This calibration certificate shall not be reproduced except in full without written approval of the laboratory.



Accredited by the Swiss Federal Office of Metrology and Accreditation
The Swiss Accreditation Service is one of the signatories to the EA
Multilateral Agreement for the recognition of calibration certificates

Accreditation No.: **SCS 108**

Glossary:

TSL	tissue simulating liquid
NORM _{x,y,z}	sensitivity in free space
ConF	sensitivity in TSL / NORM _{x,y,z}
DCP	diode compression point
Polarization ϕ	ϕ rotation around probe axis
Polarization ϑ	ϑ rotation around an axis that is in the plane normal to probe axis (at measurement center), i.e., $\vartheta = 0$ is normal to probe axis

Calibration is Performed According to the Following Standards:

- IEEE Std 1528-2003, "IEEE Recommended Practice for Determining the Peak Spatial-Averaged Specific Absorption Rate (SAR) in the Human Head from Wireless Communications Devices: Measurement Techniques", December 2003
- CENELEC EN 50361, "Basic standard for the measurement of Specific Absorption Rate related to human exposure to electromagnetic fields from mobile phones (300 MHz - 3 GHz), July 2001

Methods Applied and Interpretation of Parameters:

- NORM_{x,y,z}**: Assessed for E-field polarization $\vartheta = 0$ ($f \leq 900$ MHz in TEM-cell; $f > 1800$ MHz: R22 waveguide). NORM_{x,y,z} are only intermediate values, i.e., the uncertainties of NORM_{x,y,z} does not effect the E²-field uncertainty inside TSL (see below *ConvF*).
- NORM(f)_{x,y,z}** = NORM_{x,y,z} * *frequency_response* (see Frequency Response Chart). This linearization is implemented in DASY4 software versions later than 4.2. The uncertainty of the frequency response is included in the stated uncertainty of *ConvF*.
- DCP_{x,y,z}**: DCP are numerical linearization parameters assessed based on the data of power sweep (no uncertainty required). DCP does not depend on frequency nor media.
- ConvF and Boundary Effect Parameters**: Assessed in flat phantom using E-field (or Temperature Transfer Standard for $f \leq 800$ MHz) and inside waveguide using analytical field distributions based on power measurements for $f > 800$ MHz. The same setups are used for assessment of the parameters applied for boundary compensation (alpha, depth) of which typical uncertainty values are given. These parameters are used in DASY4 software to improve probe accuracy close to the boundary. The sensitivity in TSL corresponds to NORM_{x,y,z} * *ConvF* whereby the uncertainty corresponds to that given for *ConvF*. A frequency dependent *ConvF* is used in DASY version 4.4 and higher which allows extending the validity from ± 50 MHz to ± 100 MHz.
- Spherical isotropy (3D deviation from isotropy)**: in a field of low gradients realized using a flat phantom exposed by a patch antenna.
- Sensor Offset**: The sensor offset corresponds to the offset of virtual measurement center from the probe tip (on probe axis). No tolerance required.

Probe ET3DV6R

SN:1506

Manufactured:	October 24, 1999
Last calibrated:	May 26, 2005
Recalibrated:	May 30, 2006

Calibrated for DASYS Systems

(Note: non-compatible with DASYS2 system!)

DASY - Parameters of Probe: ET3DV6R SN:1506**Sensitivity in Free Space^A****Diode Compression^B**

NormX	2.27 ± 10.1%	$\mu V/(V/m)^2$	DCP X	95 mV
NormY	2.12 ± 10.1%	$\mu V/(V/m)^2$	DCP Y	95 mV
NormZ	1.26 ± 10.1%	$\mu V/(V/m)^2$	DCP Z	95 mV

Sensitivity in Tissue Simulating Liquid (Conversion Factors)

Please see Page 8.

Boundary Effect**TSL 900 MHz Typical SAR gradient: 5 % per mm**

Sensor Center to Phantom Surface Distance		3.7 mm	4.7 mm
SAR _{be} [%]	Without Correction Algorithm	9.6	4.9
SAR _{be} [%]	With Correction Algorithm	0.0	0.2

TSL 1810 MHz Typical SAR gradient: 10 % per mm

Sensor Center to Phantom Surface Distance		3.7 mm	4.7 mm
SAR _{be} [%]	Without Correction Algorithm	8.0	4.2
SAR _{be} [%]	With Correction Algorithm	0.2	0.2

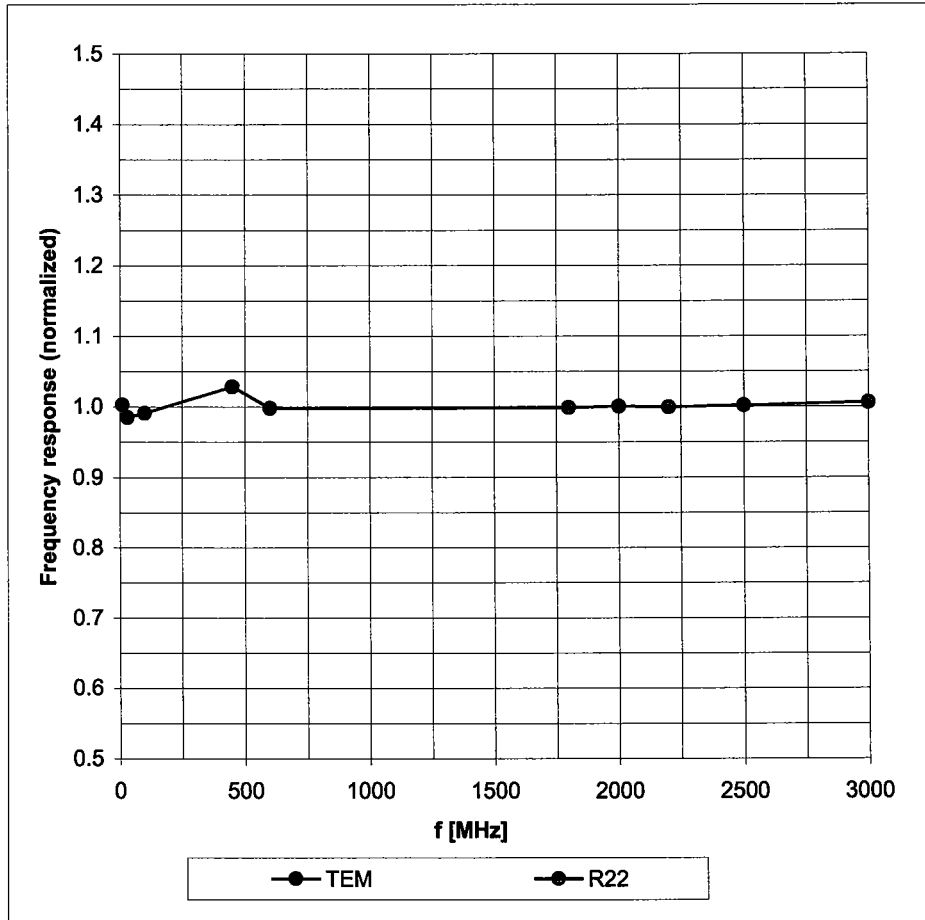
Sensor OffsetProbe Tip to Sensor Center **2.7 mm**

The reported uncertainty of measurement is stated as the standard uncertainty of measurement multiplied by the coverage factor k=2, which for a normal distribution corresponds to a coverage probability of approximately 95%.

^A The uncertainties of NormX,Y,Z do not affect the E²-field uncertainty inside TSL (see Page 8).^B Numerical linearization parameter: uncertainty not required.

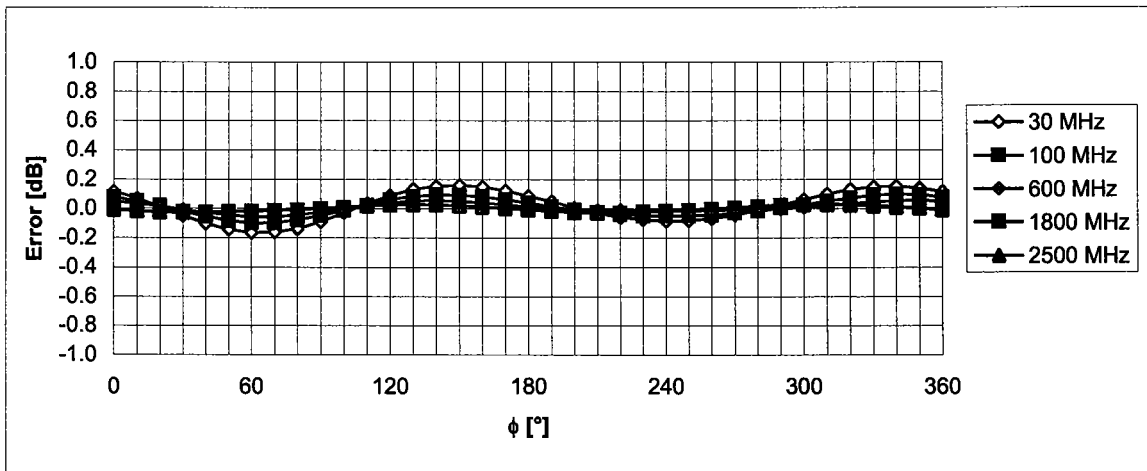
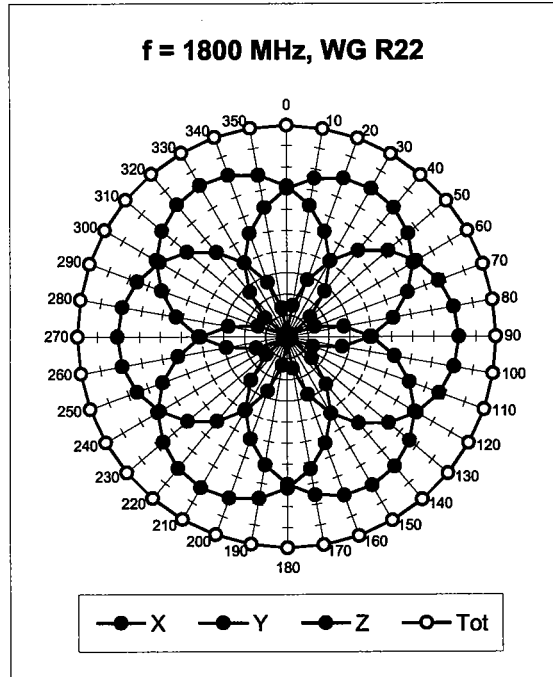
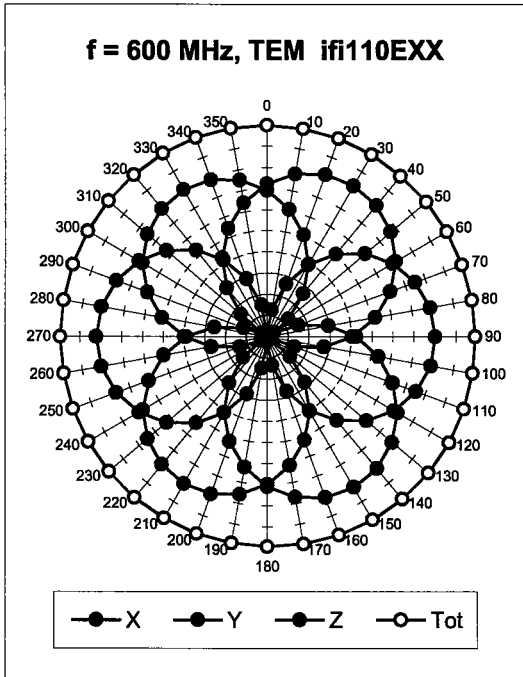
Frequency Response of E-Field

(TEM-Cell:ifi110 EXX, Waveguide: R22)



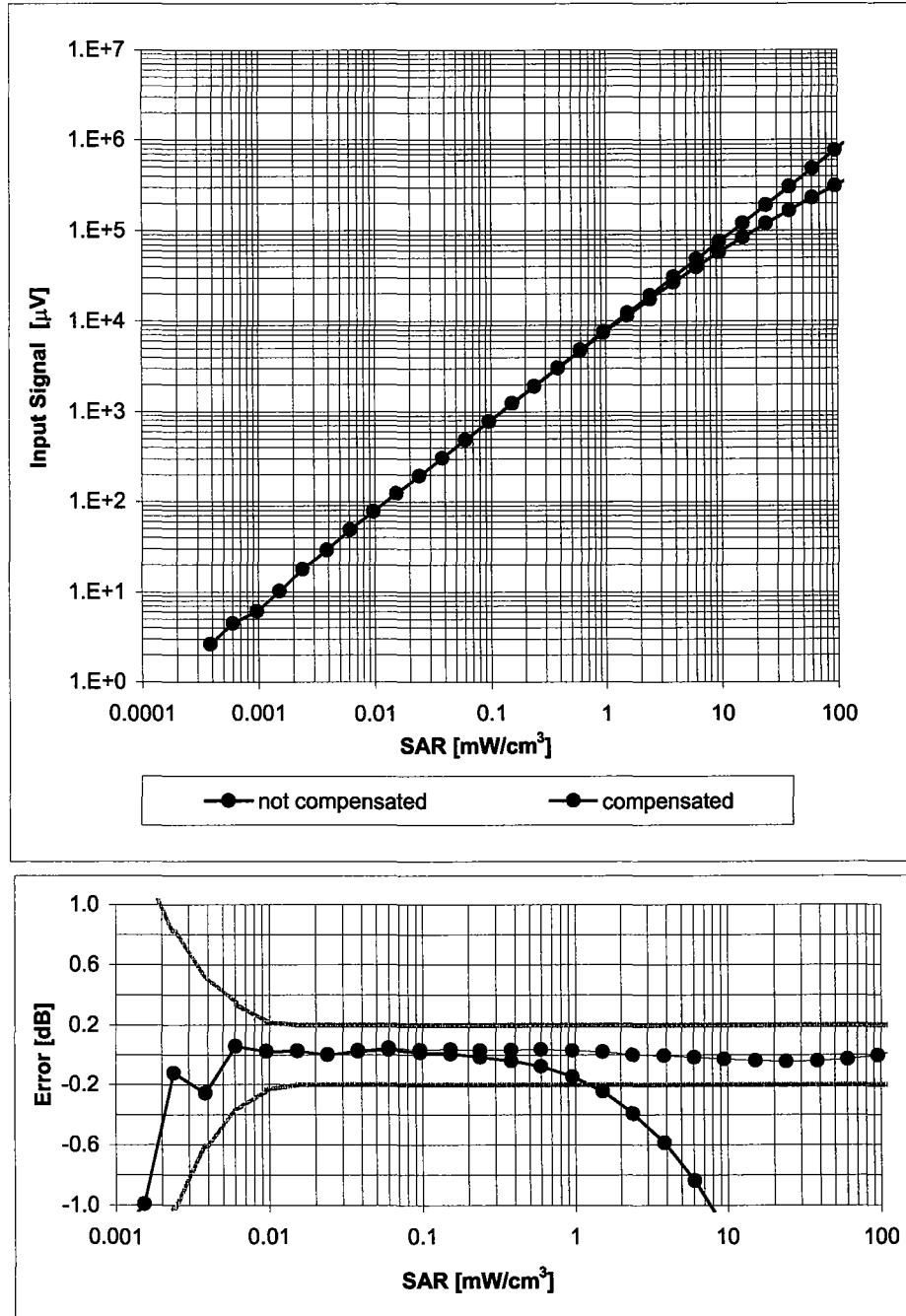
Uncertainty of Frequency Response of E-field: $\pm 6.3\%$ (k=2)

Receiving Pattern (ϕ), $\vartheta = 0^\circ$



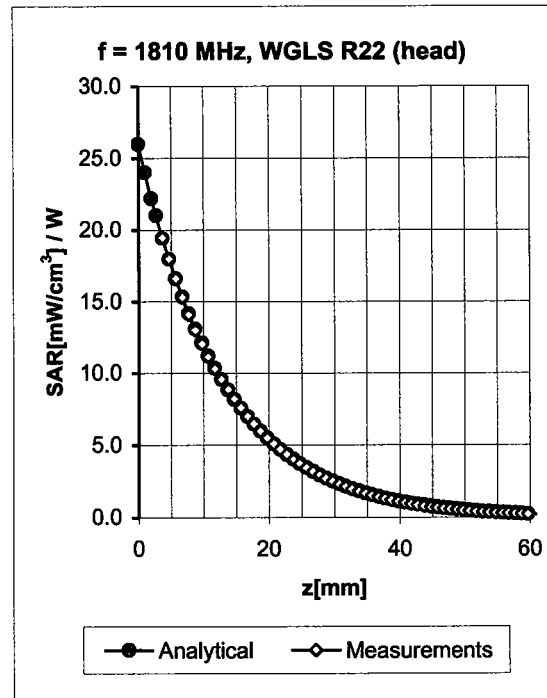
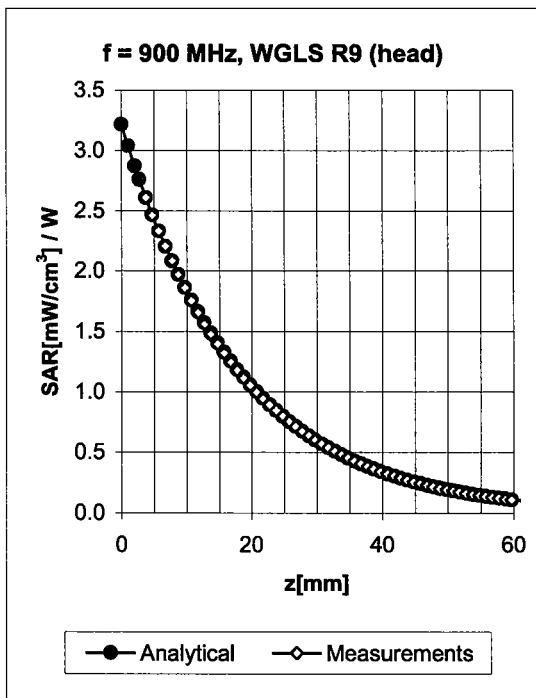
Uncertainty of Axial Isotropy Assessment: $\pm 0.5\%$ ($k=2$)

Dynamic Range f(SAR_{head}) (Waveguide R22, f = 1800 MHz)



Uncertainty of Linearity Assessment: ± 0.6% (k=2)

Conversion Factor Assessment

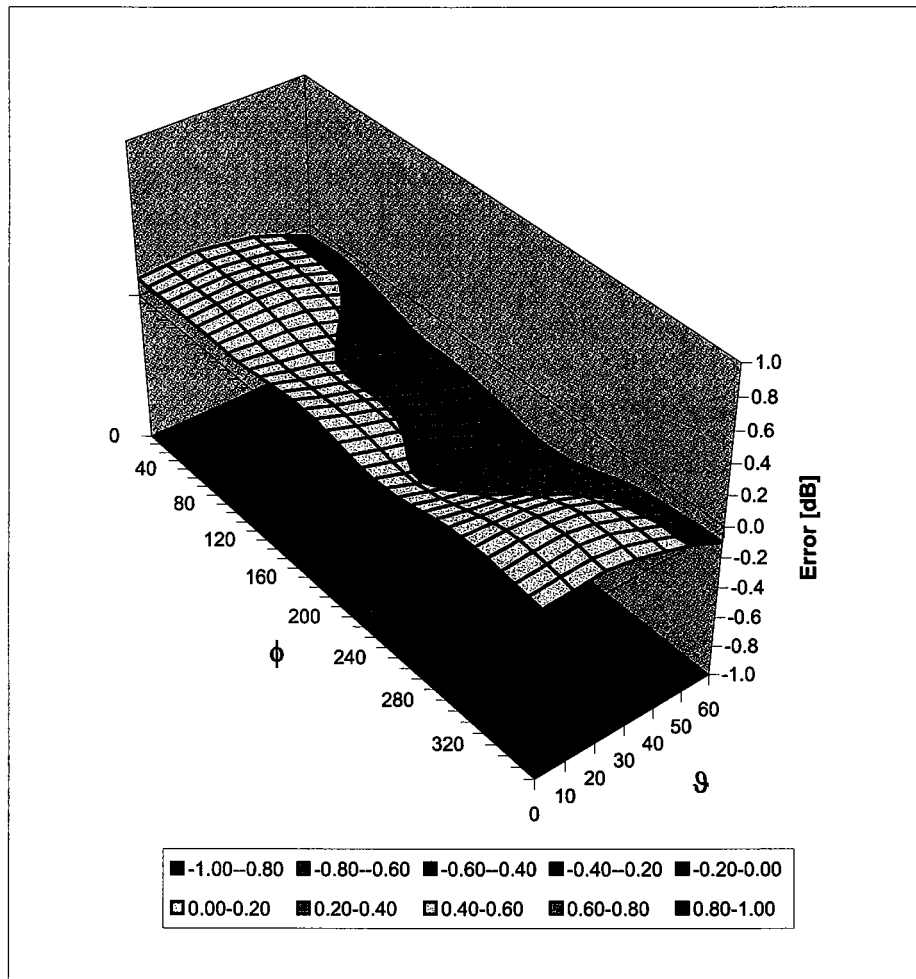


f [MHz]	Validity [MHz] ^c	TSL	Permittivity	Conductivity	Alpha	Depth	ConvF Uncertainty
900	± 50 / ± 100	Head	41.5 ± 5%	0.97 ± 5%	0.74	1.73	5.75 ± 11.0% (k=2)
1810	± 50 / ± 100	Head	40.0 ± 5%	1.40 ± 5%	0.56	2.43	4.78 ± 11.0% (k=2)
1950	± 50 / ± 100	Head	40.0 ± 5%	1.40 ± 5%	0.53	2.66	4.49 ± 11.0% (k=2)
2450	± 50 / ± 100	Head	39.2 ± 5%	1.80 ± 5%	0.65	2.25	4.18 ± 11.8% (k=2)
900	± 50 / ± 100	Body	55.0 ± 5%	1.05 ± 5%	0.63	1.95	5.53 ± 11.0% (k=2)
1810	± 50 / ± 100	Body	53.3 ± 5%	1.52 ± 5%	0.57	2.75	4.31 ± 11.0% (k=2)
1950	± 50 / ± 100	Body	53.3 ± 5%	1.52 ± 5%	0.58	2.55	4.13 ± 11.0% (k=2)
2450	± 50 / ± 100	Body	52.7 ± 5%	1.95 ± 5%	0.62	2.21	3.97 ± 11.8% (k=2)

^c The validity of ± 100 MHz only applies for DASY v4.4 and higher (see Page 2). The uncertainty is the RSS of the ConvF uncertainty at calibration frequency and the uncertainty for the indicated frequency band.

Deviation from Isotropy in HSL

Error (ϕ , ϑ), $f = 900$ MHz



Uncertainty of Spherical Isotropy Assessment: $\pm 2.6\%$ ($k=2$)

Appendix 5
Measurement Uncertainty Budget

Uncertainty Budget for Device Under Test: 30 – 3000 MHz

<i>a</i>	<i>b</i>	<i>c</i>	<i>d</i>	<i>e = f(d,k)</i>	<i>f</i>	<i>g</i>	<i>h = c x f / e</i>	<i>i = c x g / e</i>	<i>k</i>
Uncertainty Component	IEEE 1528 section	Tol. (± %)	Prob Dist	Div.	<i>c_i</i> (1 g)	<i>c_i</i> (10 g)	1 g <i>u_i</i> (±%)	10 g <i>u_i</i> (±%)	<i>v_i</i>
Measurement System									
Probe Calibration	E.2.1	5.9	N	1.00	1	1	5.9	5.9	∞
Axial Isotropy	E.2.2	4.7	R	1.73	0.707	0.707	1.9	1.9	∞
Hemispherical Isotropy	E.2.2	9.6	R	1.73	0.707	0.707	3.9	3.9	∞
Boundary Effect	E.2.3	1.0	R	1.73	1	1	0.6	0.6	∞
Linearity	E.2.4	4.7	R	1.73	1	1	2.7	2.7	∞
System Detection Limits	E.2.5	1.0	R	1.73	1	1	0.6	0.6	∞
Readout Electronics	E.2.6	0.3	N	1.00	1	1	0.3	0.3	∞
Response Time	E.2.7	1.1	R	1.73	1	1	0.6	0.6	∞
Integration Time	E.2.8	1.1	R	1.73	1	1	0.6	0.6	∞
RF Ambient Conditions - Noise	E.6.1	3.0	R	1.73	1	1	1.7	1.7	∞
RF Ambient Conditions - Reflections	E.6.1	0.0	R	1.73	1	1	0.0	0.0	∞
Probe Positioner Mech. Tolerance	E.6.2	0.4	R	1.73	1	1	0.2	0.2	∞
Probe Positioning w.r.t Phantom	E.6.3	1.4	R	1.73	1	1	0.8	0.8	∞
Max. SAR Evaluation (ext., int., avg.)	E.5	3.4	R	1.73	1	1	2.0	2.0	∞
Test sample Related									
Test Sample Positioning	E.4.2	3.2	N	1.00	1	1	3.2	3.2	29
Device Holder Uncertainty	E.4.1	4.0	N	1.00	1	1	4.0	4.0	8
SAR drift	6.6.2	5.0	R	1.73	1	1	2.9	2.9	∞
Phantom and Tissue Parameters									
Phantom Uncertainty	E.3.1	4.0	R	1.73	1	1	2.3	2.3	∞
Liquid Conductivity (target)	E.3.2	5.0	R	1.73	0.64	0.43	1.8	1.2	∞
Liquid Conductivity (measurement)	E.3.3	3.3	N	1.00	0.64	0.43	2.1	1.4	∞
Liquid Permittivity (target)	E.3.2	5.0	R	1.73	0.6	0.49	1.7	1.4	∞
Liquid Permittivity (measurement)	E.3.3	1.9	N	1.00	0.6	0.49	1.1	0.9	∞
Combined Standard Uncertainty			RSS				11.1	10.8	411
Expanded Uncertainty (95% CONFIDENCE LEVEL)			<i>k=2</i>				22.2	21.6	

Uncertainty Budget for System Check: 30 – 3000 MHz

<i>a</i>	<i>b</i>	<i>c</i>	<i>d</i>	<i>e = f(d,k)</i>	<i>f</i>	<i>g</i>	<i>h = c x f / e</i>	<i>i = c x g / e</i>	<i>k</i>
Uncertainty Component	IEEE 1528 section	Tol. (± %)	Prob. Dist.	Div.	<i>c_i</i> (1 g)	<i>c_i</i> (10 g)	1 g <i>u_i</i> (±%)	10 g <i>u_i</i> (±%)	<i>v_i</i>
Measurement System									
Probe Calibration	E.2.1	5.9	N	1.00	1	1	5.9	5.9	∞
Axial Isotropy	E.2.2	4.7	R	1.73	1	1	2.7	2.7	∞
Spherical Isotropy	E.2.2	9.6	R	1.73	0	0	0.0	0.0	∞
Boundary Effect	E.2.3	1.0	R	1.73	1	1	0.6	0.6	∞
Linearity	E.2.4	4.7	R	1.73	1	1	2.7	2.7	∞
System Detection Limits	E.2.5	1.0	R	1.73	1	1	0.6	0.6	∞
Readout Electronics	E.2.6	0.3	N	1.00	1	1	0.3	0.3	∞
Response Time	E.2.7	1.1	R	1.73	1	1	0.6	0.6	∞
Integration Time	E.2.8	0.0	R	1.73	1	1	0.0	0.0	∞
RF Ambient Conditions - Noise	E.6.1	3.0	R	1.73	1	1	1.7	1.7	∞
RF Ambient Conditions - Reflections	E.6.1	0.0	R	1.73	1	1	0.0	0.0	∞
Probe Positioner Mechanical Tolerance	E.6.2	0.4	R	1.73	1	1	0.2	0.2	∞
Probe Positioning w.r.t. Phantom	E.6.3	1.4	R	1.73	1	1	0.8	0.8	∞
Max. SAR Evaluation (ext., int., avg.)	E.5	3.4	R	1.73	1	1	2.0	2.0	∞
Dipole									
Dipole Axis to Liquid Distance	^{8,} E.4.2	2.0	R	1.73	1	1	1.2	1.2	∞
Input Power and SAR Drift Measurement	^{8,} 6.6.2	5.0	R	1.73	1	1	2.9	2.9	∞
Phantom and Tissue Parameters									
Phantom Uncertainty	E.3.1	4.0	R	1.73	1	1	2.3	2.3	∞
Liquid Conductivity (target)	E.3.2	5.0	R	1.73	0.64	0.43	1.8	1.2	∞
Liquid Conductivity (measurement)	E.3.3	3.3	R	1.73	0.64	0.43	1.2	0.8	∞
Liquid Permittivity (target)	E.3.2	5.0	R	1.73	0.6	0.49	1.7	1.4	∞
Liquid Permittivity (measurement)	E.3.3	1.9	R	1.73	0.6	0.49	0.6	0.5	∞
Combined Standard Uncertainty			RSS				9.0	8.8	9999 9
Expanded Uncertainty (95% CONFIDENCE LEVEL)			<i>k=2</i>				17.7	17.3	

Appendix 6

Photographs of the device under test



Figure 1: Front of phone



Figure 2: Back of phone



Figure 3. Phone Against the Head Phantom (Cheek Touch)



Figure 4. Phone Against the Head Phantom (15°Tilt)



Figure 5: Phone Against the Flat Phantom with Holster



Figure 6: Wide Holster



Figure 7: Wide Holster (Side View)

Appendix 7

Dipole Characterization Certificate

Certification of System Performance Check Targets

Based on WI-0396

-Historical Data-

2450MHz	
IEEE1528 Target:	52.4 (W/kg)
Measurement Uncertainty (k=1):	9.0%
Measurement Period:	3-June-05 to 10-May-06
# of tests performed:	64
Grand Average:	58.0 (W/kg)
% Delta (Average - IEEE1528 Target)	10.6%
Is % Delta <= Expanded Measurement Uncertainty (k=2)?	Yes
Accept/Reject <u>Average</u> as new system performance check target?	ACCEPT
<u>Applies to Dipole SN's:</u> 740, 766, 767	


-New System Performance Check Targets- per WI-0396

(based on analysis of historical data)

Frequency	SAR Target (W/kg)	Permittivity	Conductivity (S/m)
2450MHz	58.0	39.2 ± 5%	1.80 ± 5%

-Approvals-

Submitted by: Date:

Signed: 

Comments:

Approved by: Date:

Signed: 

Comments:

Certification of System Performance Check Targets

Based on APP-0396

-Historical Data-

900MHz	
IEEE1528 Target:	10.8 (W/kg)
Measurement Uncertainty (k=1):	9.0%
Measurement Period:	9-Nov-04 to 2-June-05
# of tests performed:	813
Grand Average:	11.3 (W/kg)
% Delta (Average - IEEE1528 Target)	4.4%
Is % Delta <= Expanded Measurement Uncertainty (k=2)?	Yes
Accept/Reject <u>Average</u> as new system performance check target?	ACCEPT
Historic data included the following 900MHz Dipoles:	
69, 77	
79, 80	
91, 94	
96, 97	


-New System Performance Check Targets- per APP-0396

(based on analysis of historical data)

Frequency	SAR Target (W/kg)	Permittivity	Conductivity (S/m)
900MHz	11.3	41.5 ± 5%	0.97 ± 5%

-Approvals-

Submitted by: Date:

Signed: 

Comments:

Approved by: Date:

Signed: 

Comments: