



Wireless/Internet SDIO WLAN card



SDIO WLAN Card
User's Manual
ver. 1.40

Content

Inside Package	P.1
System Requirements & Installation Description.....	P.1
Installation Procedure	P.2~5
Inserting the SDIO WLAN Card into a PDA	P.6
Removing the SDIO WLAN Card from a PDA	P.6
How to check Connect status	P.7~8
How to Connect Ad-hoc.....	P.9
How to Remove Settings.....	P.9
Wireless/Internet Speed Dial	P.10~11
How to Select Networks Manually	P.12
Inside CD	P.13
How to Install Software with CAB file.....	P.14
AP Compatibility List	P.15
Frequently Ask Question	P.16



Thank you for choosing SDIO WLAN card, it is the smallest SDIO Wireless/Internet WLAN card available on the market today. It is easy to install and use, and provides unlimited online usage and connectivity wherever you are.

■ Inside Package

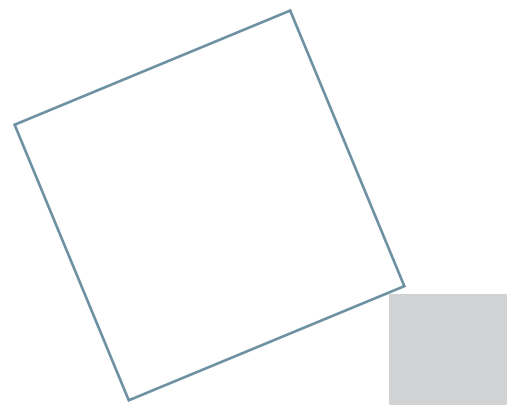


Driver & User Guide CD



■ System Requirements & Installation Description

1. This SPECTEC SDIO Wi-Fi card can only be used in Pocket PCs with Windows Mobile 2003 or newer versions of this operation system.
2. This SPECTEC SDIO Wi-Fi card can only be used on PDAs with the SDIO drive.





■ Installation Procedure

< First, connect PDA to your computer with a USB wire.



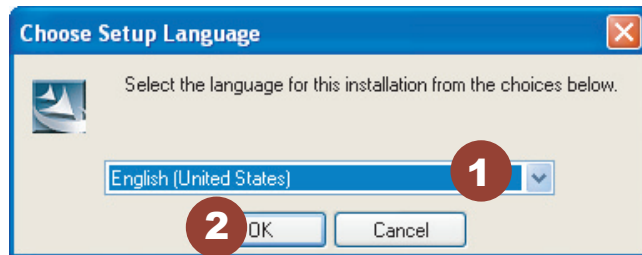
< Main menu window will pop-up when you insert the "Spectec SDIO Series" Installation CD by autorun:

<click the **Moto Q GSM 802.11b/g WLAN Card** item for **SDW-825**.

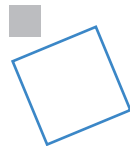




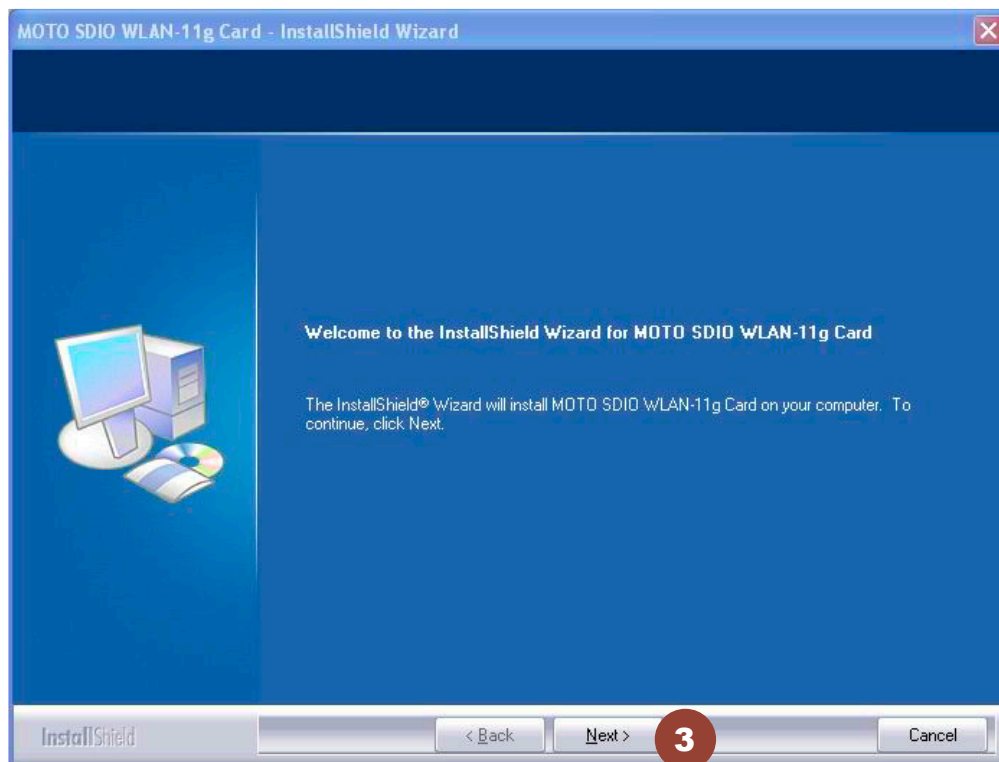
< Choose the desired **Language**, then click **OK**.



< The Installation menu will automatically appear on the screen.

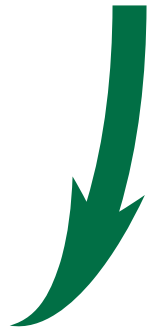
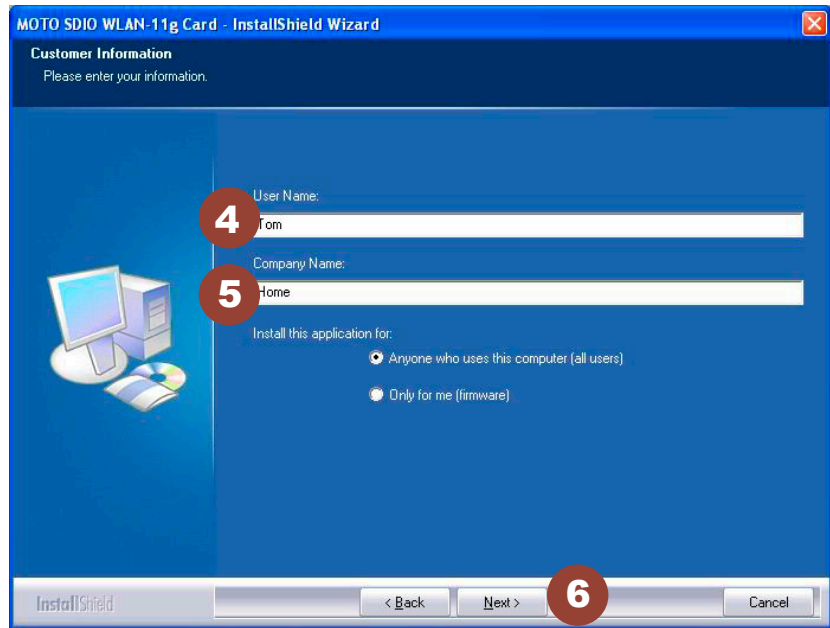


< Click **Next**

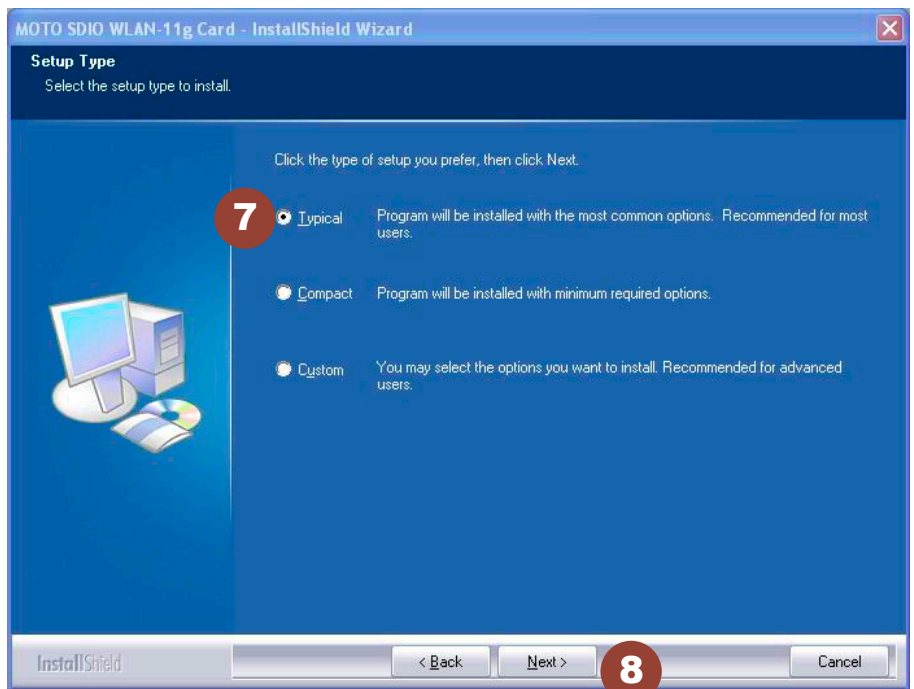




< Enter user information, then click **Next**.

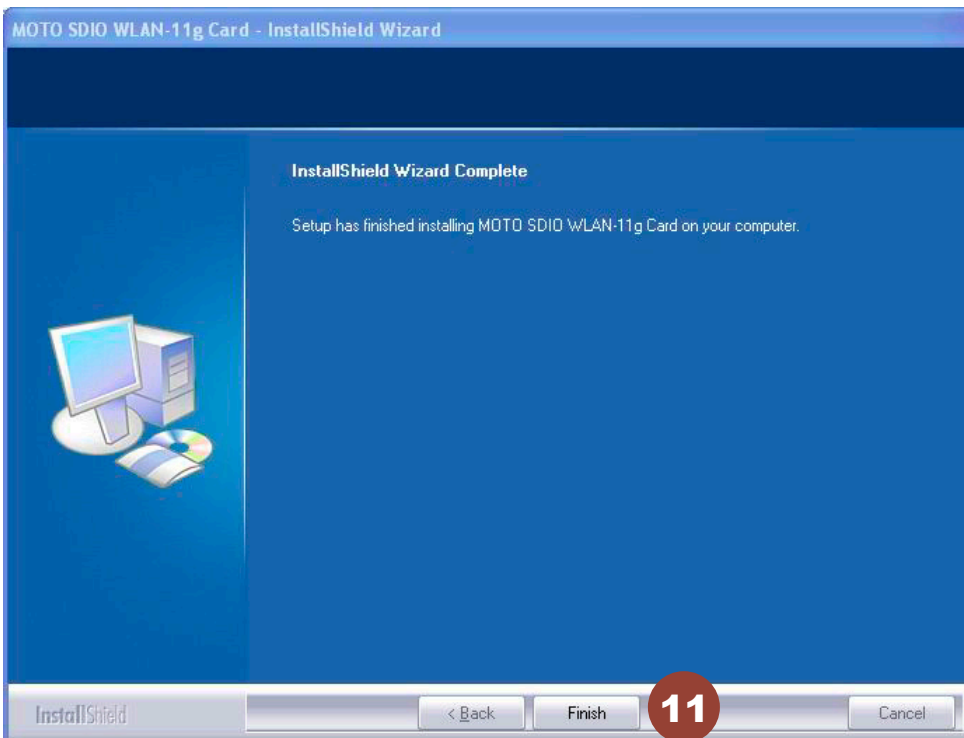
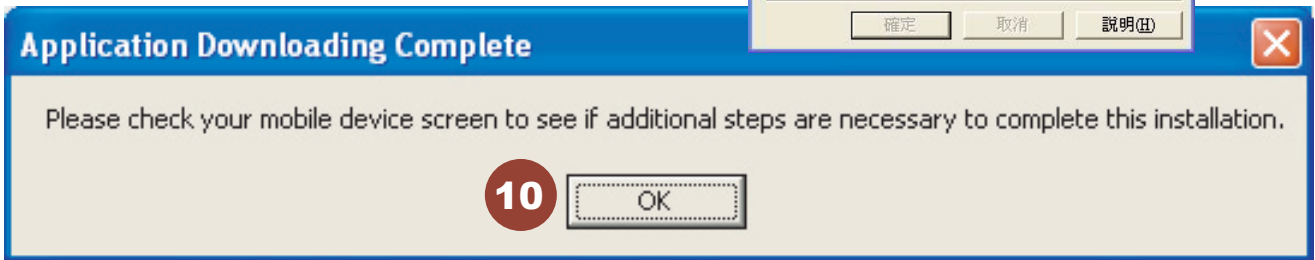
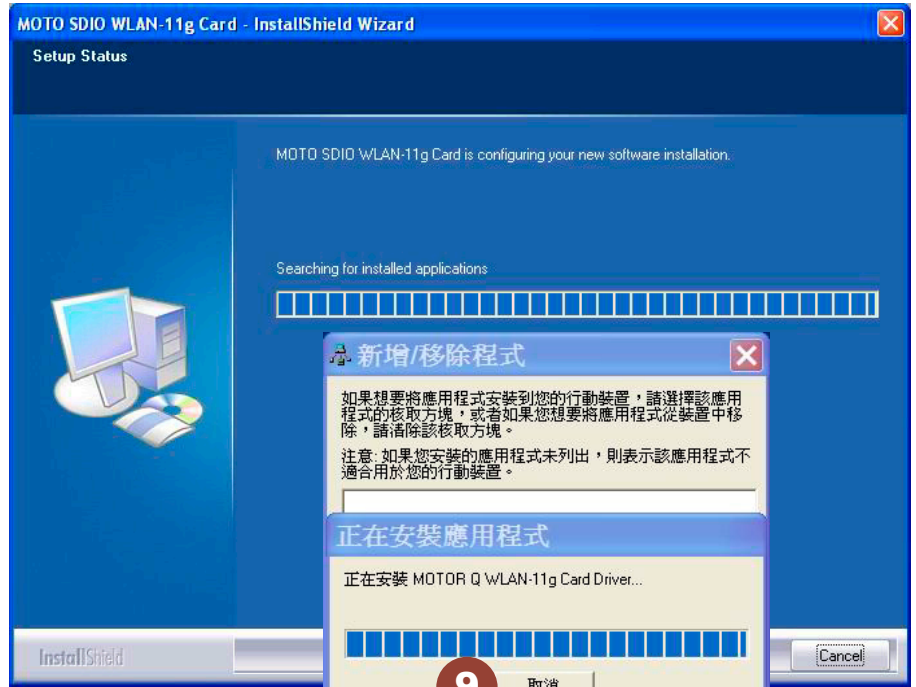


< Chose **Setup type**, then click **Next**



< The driver will be installed automatically.

< Click **Yes** to proceed with installation. Click **OK** to finish installation.



< Click **Finish** to complete the driver installation process.



■ Inserting the SDIO WLAN Card into a PDA

< Check the direction of the card.
Insert the card with the label side facing the front of the PDA until it clicks.

Different PDAs may have different drives. Make sure the direction is correct to avoid damaging the PDA's SD drive.

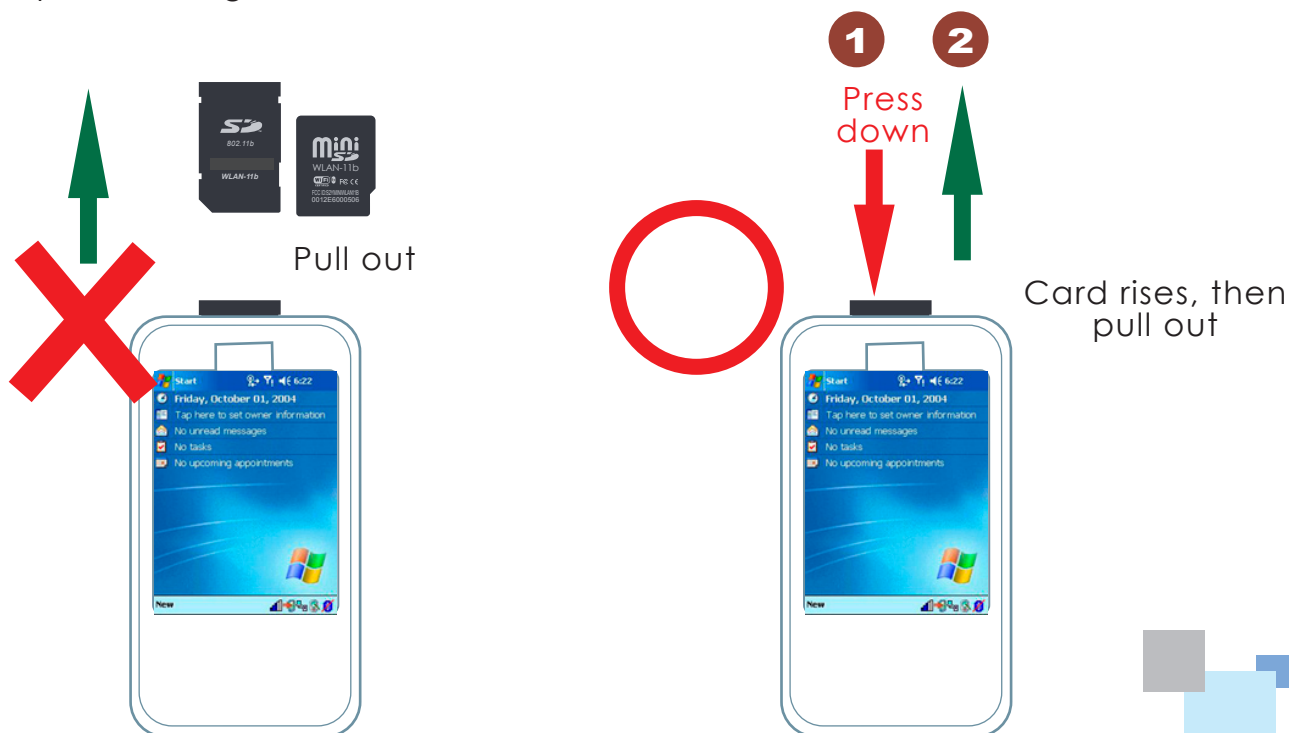
* Please do not keep inserting & removing the card, different PDAs needs an interval of 5 to 7 seconds to process.



■ How to take a SDIO WLAN card out of a PDA


< When removing the SDIO WLAN card from a PDA, simply press down on the card until it clicks. The card will rise up for easy removal. DO NOT PULL by force, or the slot may be damaged.

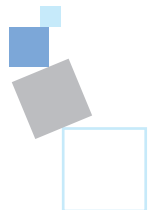
< This card is designed to be locked into the slot. Forcefully pulling the card out will not only damage this auto pop-out function, but also the slot and the wireless card.






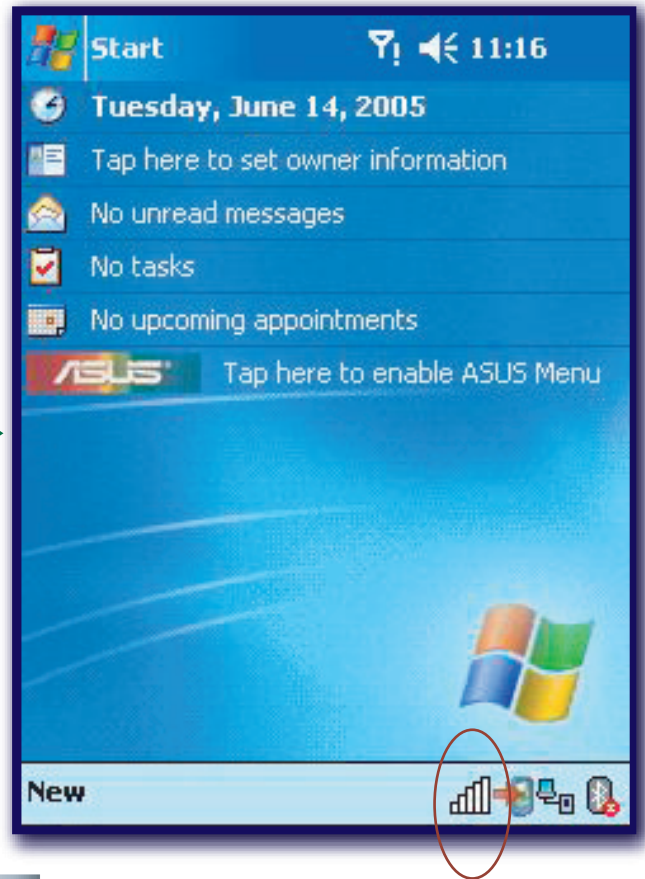
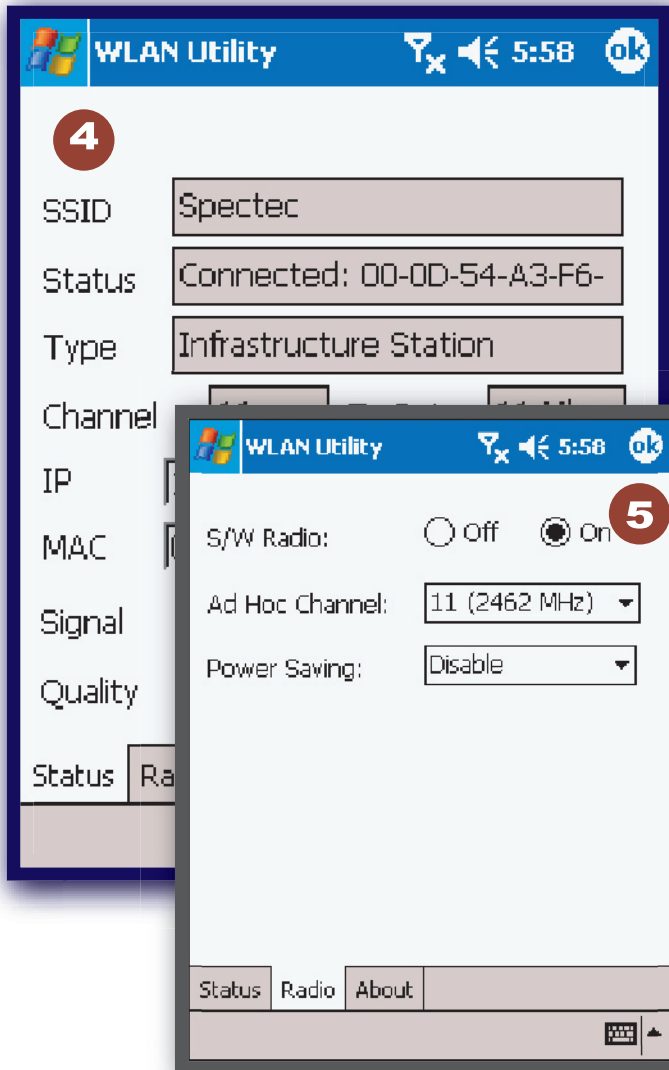
How to check Connect Status


- < After install the software, start path as **Start\Programs**.
- < After inserting the card into the PDA, click **Start**. Click **Programs** on the pull-down menu, then select . (Only built-in 11b card for PCC2003)





In "Radio" page of WLAN Utility, you may check **S/W Radio Off/on** for **Enable/Disable** Wi-Fi card, or you can also find a shortcut icon  at the lower right hand corner of the screen.



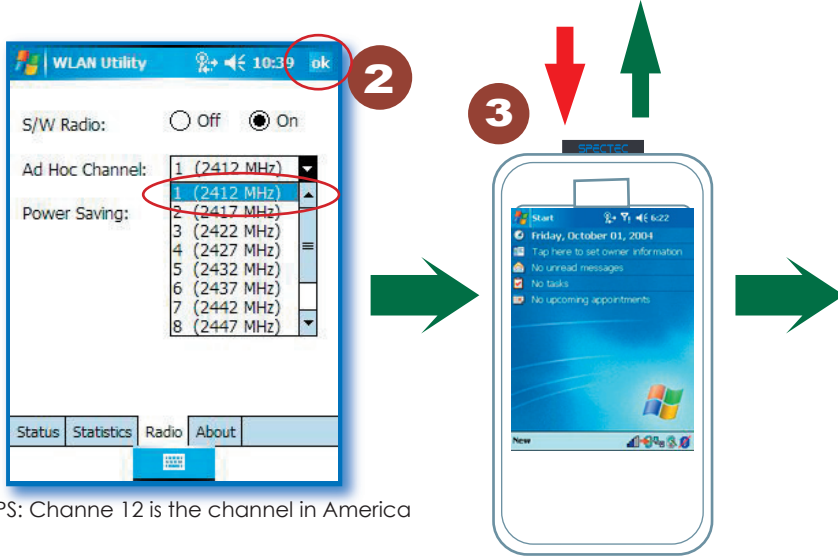
< Click , shortcut icon to switch **off** Wi-Fi radio

*** Note : The WLAN Utility can be only compatibility on PPC 2003(CE4.X) and few windows mobile 5.0(CE5.0) OS**



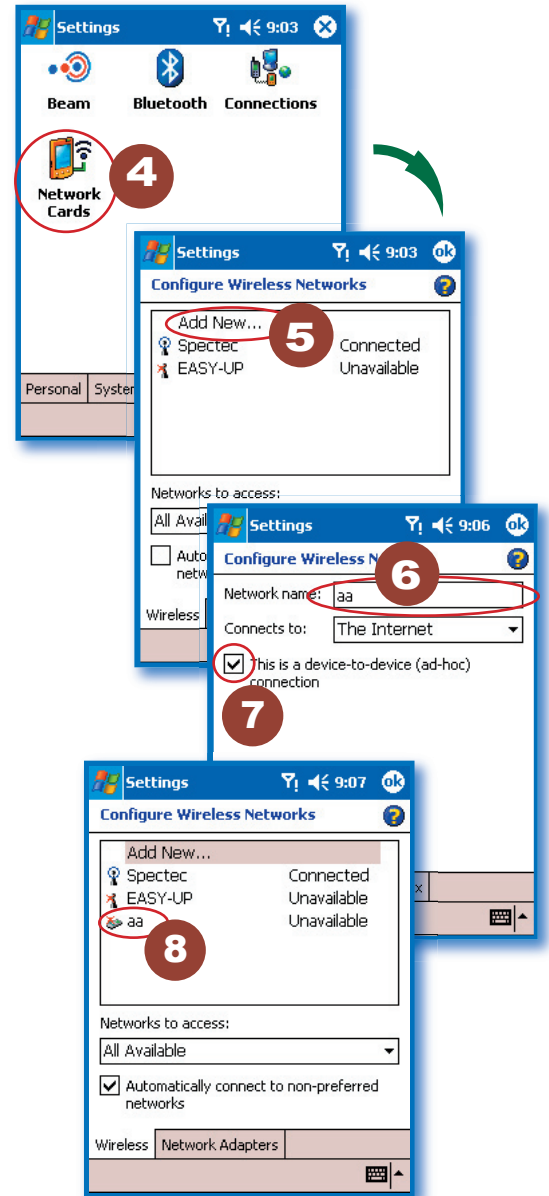


How to Connect Ad-hoc



PS: Channe 12 is the channel in America

1. In **WLAN Utility**, select **Ad-Hoc Channel** (must be channel1).
2. Click **OK** to exit **WLAN Utility**.
3. Remove the card from PDA, then re-insert the card.
4. Go to PDA system: **Settings\Connections\ Network Cards**.
5. Click **Add New**.
6. Type in the name (ex. aa).
7. Check the "This is a device-to-device (ad-hoc) connection" box.
8. Click **OK**. The input name (ex. aa) will be added to the **Network Address**.



*Ad-hoc channel is a "Point-to-point" network segment. It provides you with a temporary LAN environment.

How to Remove Settings

In **Settings**, select the network name that you would like to remove. Wait 2 seconds for the '**Remove Settings**' pop-up window to appear.

