

## Tune-Up Procedure (Epoch-S02-19001W)

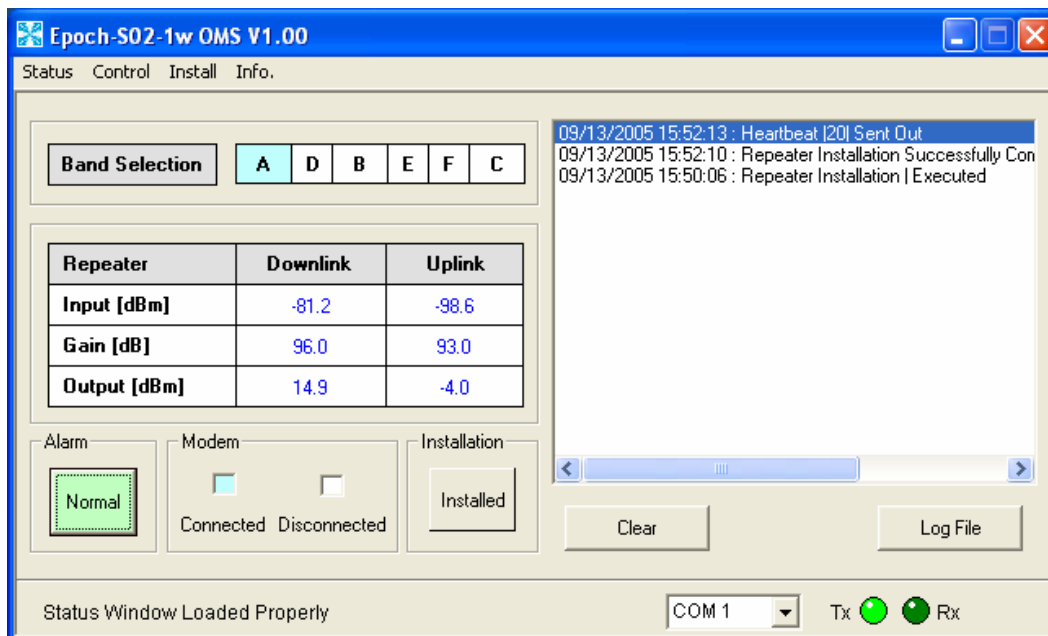
### I. Connecting the Laptop to the Repeater

1. Connect the RS-232 straight-through serial cable (included in the box) to the NMS port (labeled as # 1) on the bottom of the Epoch-S02-19001W as shown below. Connect the other end of the RS-232 straight-through serial cable to the serial port on the PC.

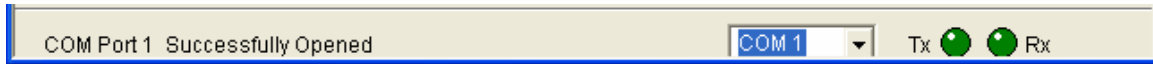
# 1 - NMS Port



2. Open the OMS software by double clicking the software icon. The following window will be displayed:



3. Check the communication port on the bottom of the GUI (Graphical User Interface) window. If you see the following prompt “COM Port 1 Successfully Opened” on the lower left portion of the window, the OMS software and the laptop can communicate with each other properly. For example, if “COM Port 1 Failed To Open” appears, choose a different Com Port as shown below until proper communication is established.



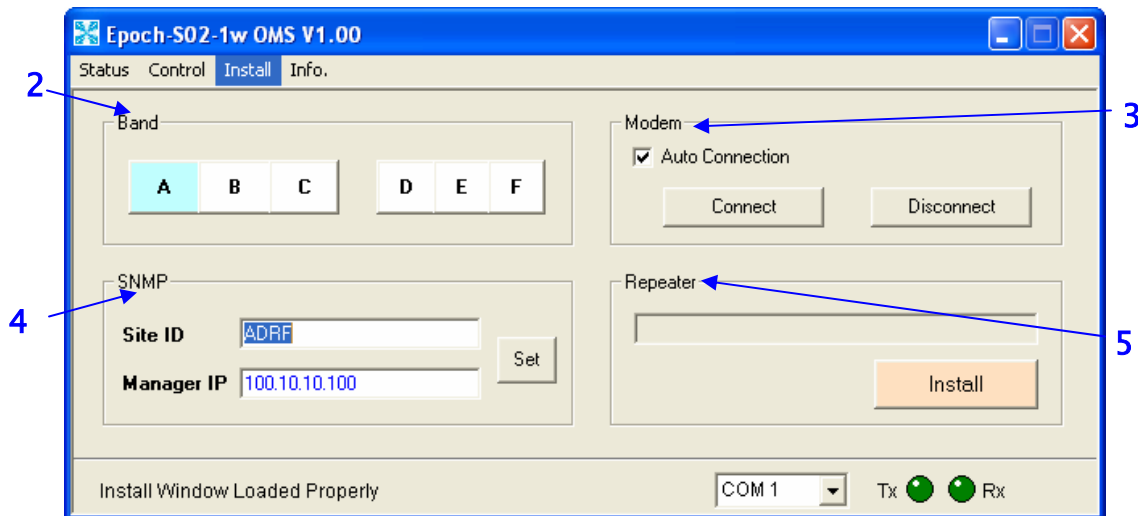
## II. Turn the Epoch-S02-19001W Power On

1. Turn on the repeater’s main power located inside the repeater.
2. On the lower right corner of the GUI window, you can see both the TX and the RX green lights are blinking periodically. This implies that the Epoch-S02-19001W and the PC are communicating properly.
3. Verify on the Status Window that the modem box is highlighted and is showing as connected. This may take a few minutes once the repeater is powered on.

**Note: The above step only applies if a wireless modem is connected to the repeater.**

## III. Go to Install Menu

1. Go to the “Install” Menu, you will see the following screen.



2. On the Installation screen, select the desired operating “Band.” By default, the A band is selected.

**Note: Steps 3 & 4 should be followed only if a wireless modem is connected to the repeater.**

3. Verify that the “Auto Connection” button is checked (default setting).

4. Enter the Site ID and the Manager IP as provided by the wireless provider. Click the “Set” button once the parameters are typed in.

5. Hit the “Install” button. Once the button is hit, the Epoch-S02-19001W will be checking various parameters automatically (e.g. Band Selection, RSSI, Isolation, Alarm, Heartbeat, etc) and set the different parameters for the repeater accordingly (e.g. Gain, Output Power, etc.).

If “Installation Successfully Completed” dialog box appears, the Epoch-S02-19001W repeater has been successfully installed. This installation process typically takes less than 5 minutes if all the above steps are followed and the conditions are met.

#### **IV. Trouble Shooting**

It would be very rare, but if you unfortunately have an “Installation Incomplete” message, please contact the Technical Support Department at:

E-Mail: [techsupport@adrftech.com](mailto:techsupport@adrftech.com)

Phone: 323-254-8131