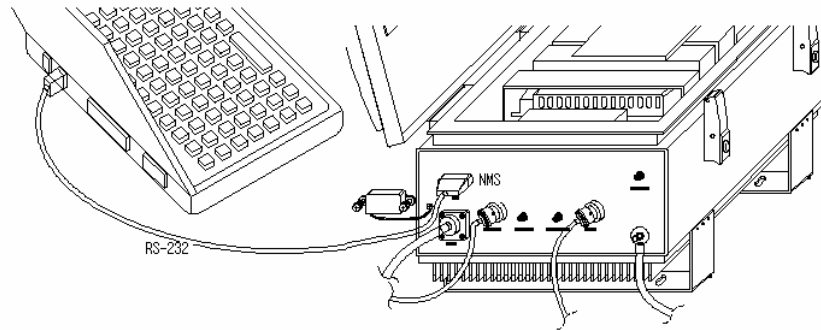


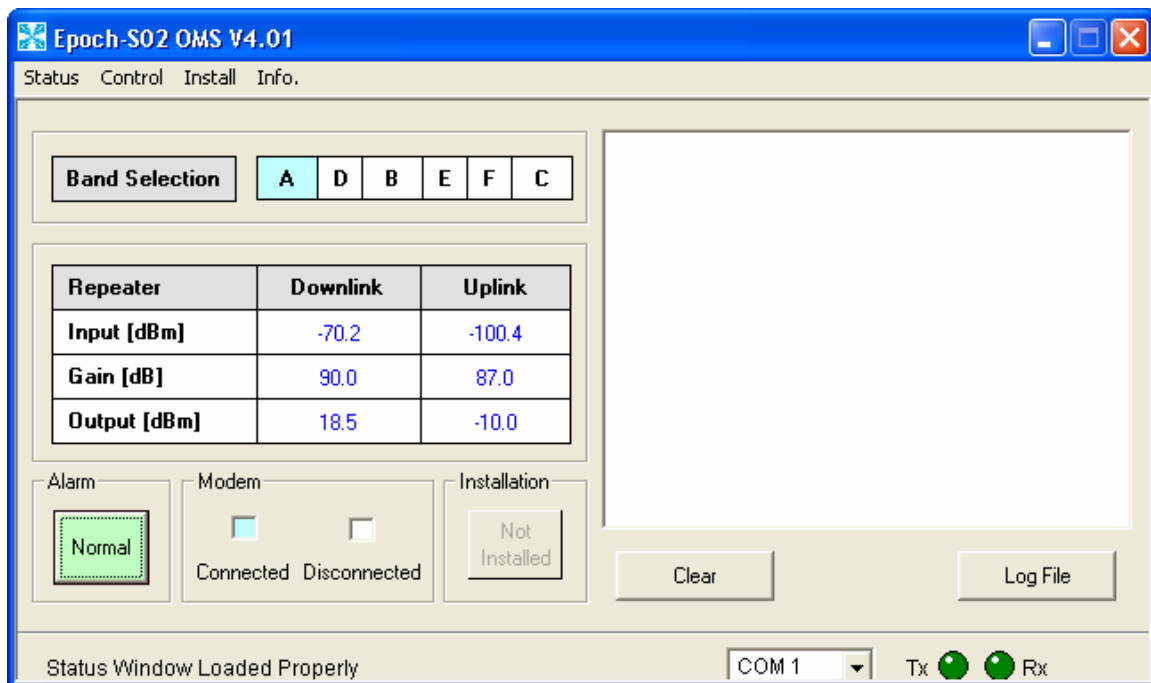
Tune-Up Procedure

I. Connecting the Laptop to the Repeater

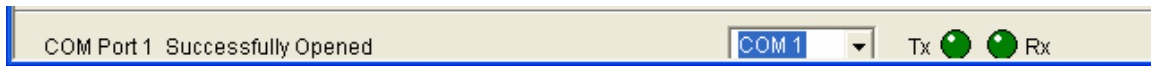
1. Connect the RS-232 straight-through cable (provided in the box) to the NMS port on the bottom of the Epoch-S02 as shown below. Connect the other end of the RS-232 cable to the laptop as shown below.



2. Open the OMS software by double clicking the software icon. The following window will be displayed:

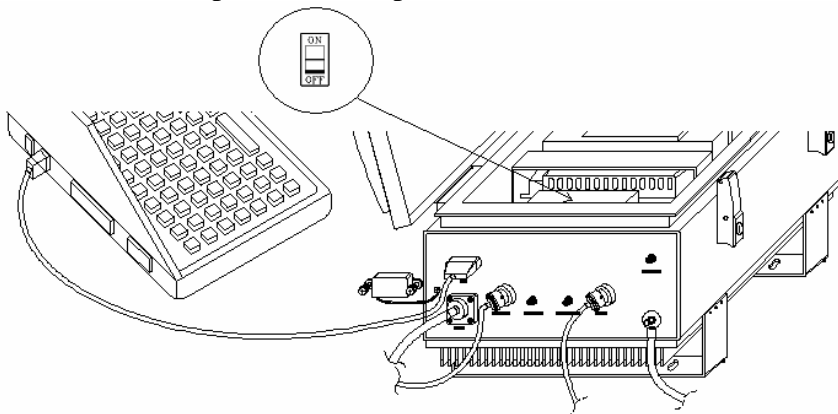


3. Check the communication port on the bottom of the GUI (Graphical User Interface) window. If you see the following prompt “COM Port 1 Successfully Opened” on the lower left portion of the window, the OMS software and the laptop can communicate with each other properly. If “COM Port 1 Failed To Open” appears, choose a different Com Port as shown below until proper communication is established.



II. Turn the Epoch-S02 Power On

1. Turn on the Repeater's main power.



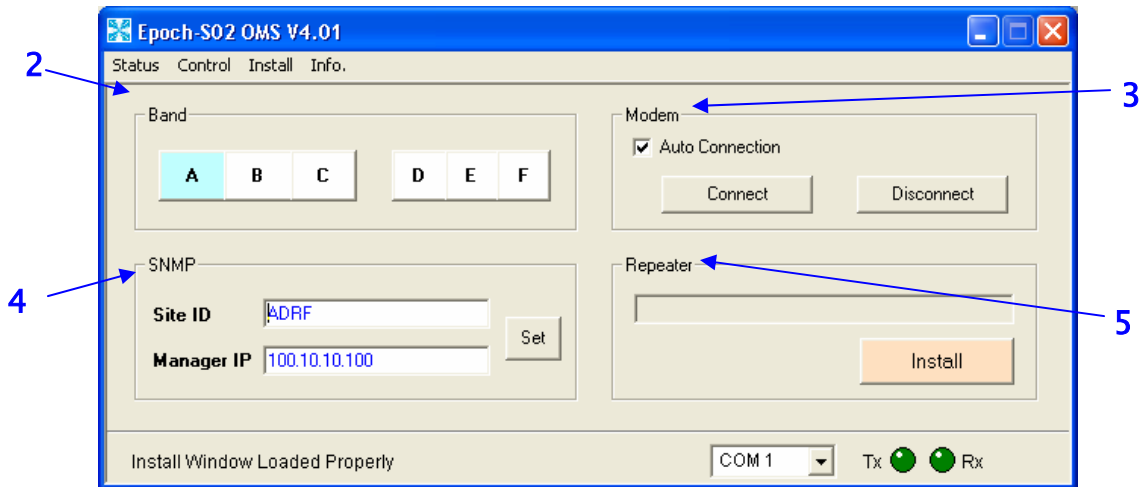
2. On the lower right corner of the GUI window, you can see both the TX and the RX green lights are blinking periodically. This implies that the Epoch-S02 and the laptop are communicating properly.

3. In the Status Window, make sure that the “Not Installed” button appears. The box will change to “Installed” once the repeater is properly installed using the steps as instructed below.

4. Verify on the Status Window that the box is checked for “Modem Connected.” This may take a few minutes once the repeater is powered on.

III. Go to Installation Menu

1. Go to the “Install” Menu, you will see the following screen.



2. On the Installation screen, select the desired operating “Band.” The default is “A” Band.

Note: The following steps (#’s 3 & 4) should be followed only if a 3G wireless modem is connected for alarming purposes.

3. Verify that the “Auto Connection” button is checked (default setting).

4. Enter the Site ID and the Manager IP as provided by the carrier. Click the “Set” button once the parameters are typed in.

5. Hit the “Install” button. Once the button is hit, the Epoch-S02 will be checking various parameters automatically (e.g. Band Selection, RSSI, Isolation, Alarm, Heartbeat, etc) and set the different parameters for the repeater accordingly (e.g. Gain, Output Power, etc.).

If “Installation Successfully Completed” dialog box appears, the Epoch-S02 repeater has been successfully installed and everything is **properly tuned**. This installation process typically takes less than 5 minutes if all the above steps are followed and the conditions are met.

IV. Trouble Shooting

It would be very rare, but if you unfortunately have an “Installation Incomplete” message, please contact the Customer Support Department at:

E-Mail: customersupport@adrftech.com

Phone: (323) 254-8131