

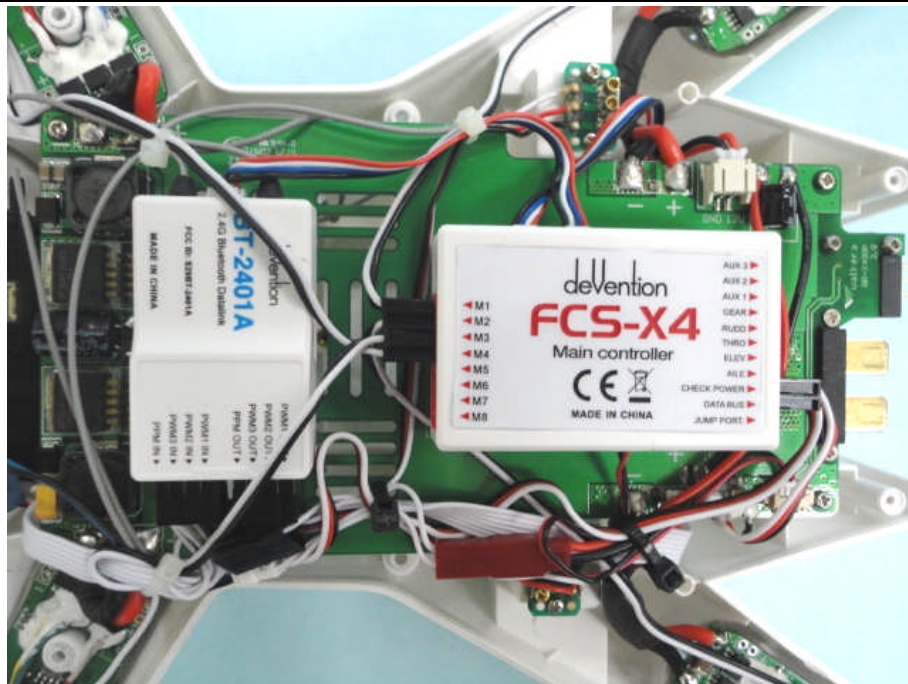


Annex B: Internal Photos of test item

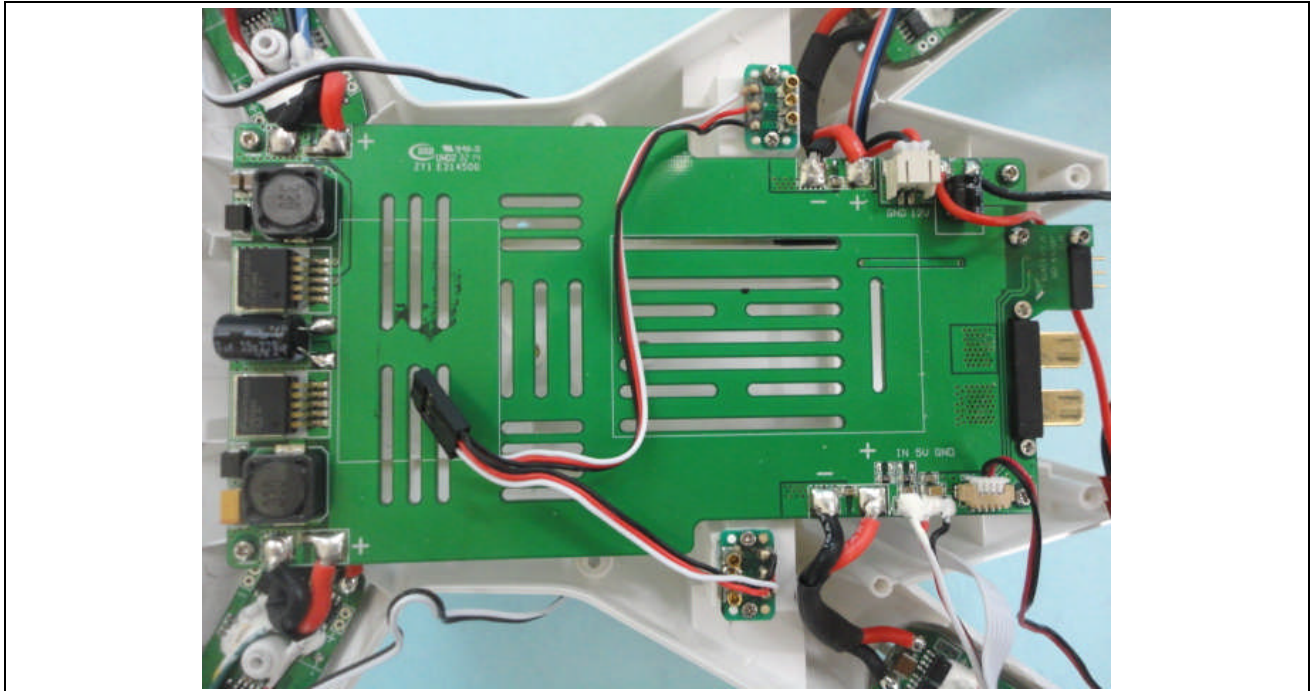
ANNEX Photo documentation **Scout-X4 (BT-2401A, RX709)**



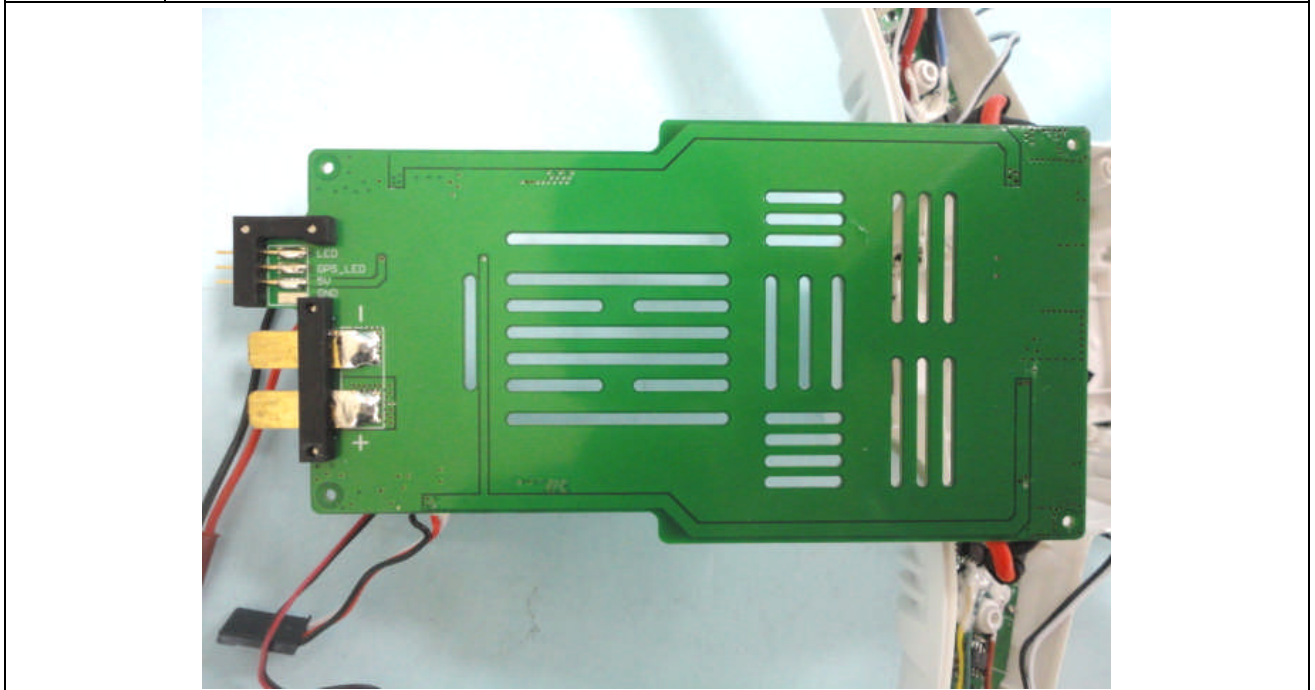
Picture 1:



Picture 2:



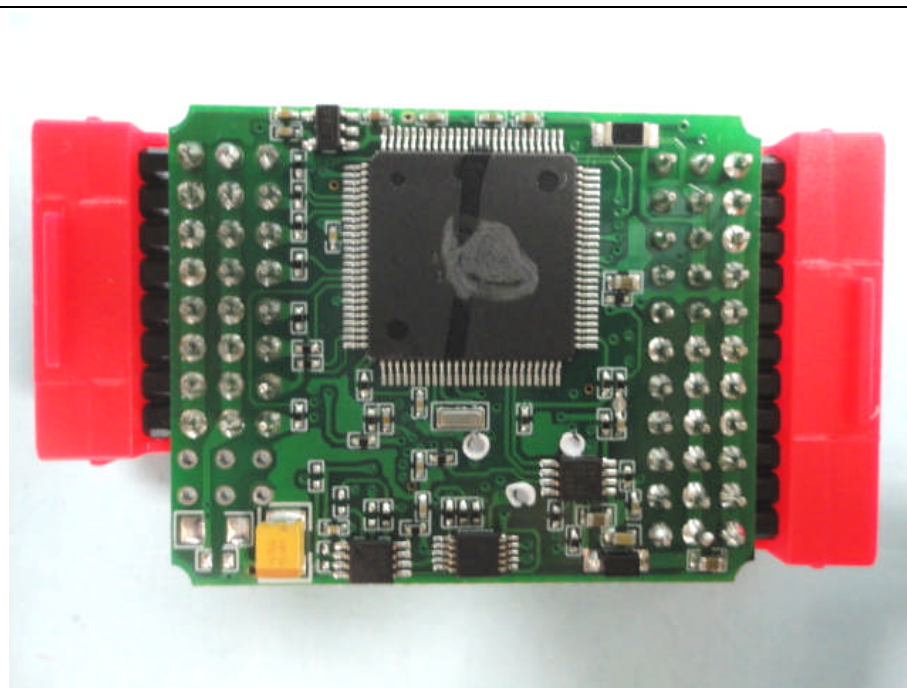
Picture 3:



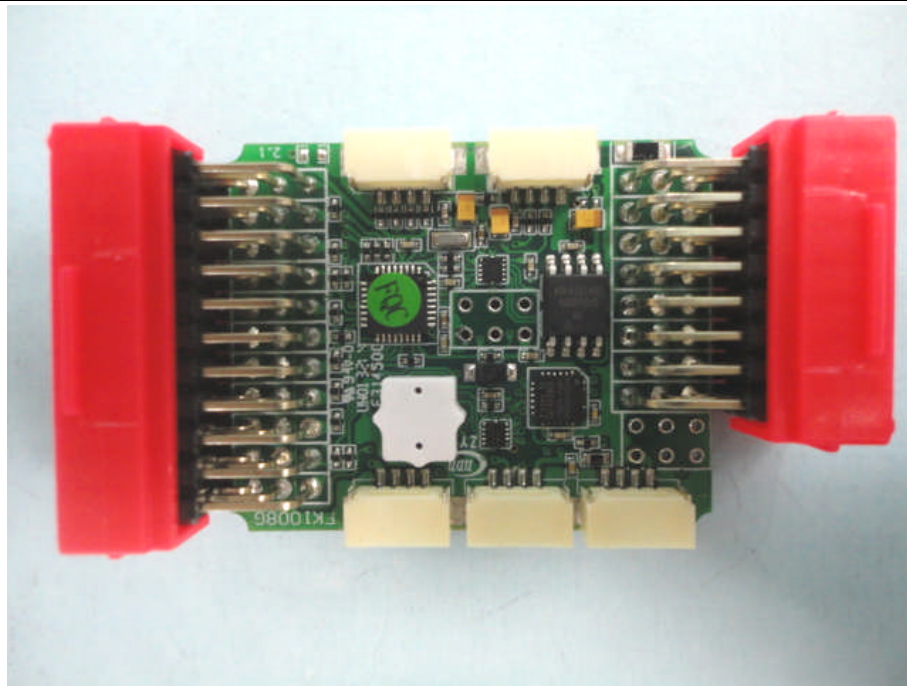
Picture 4:



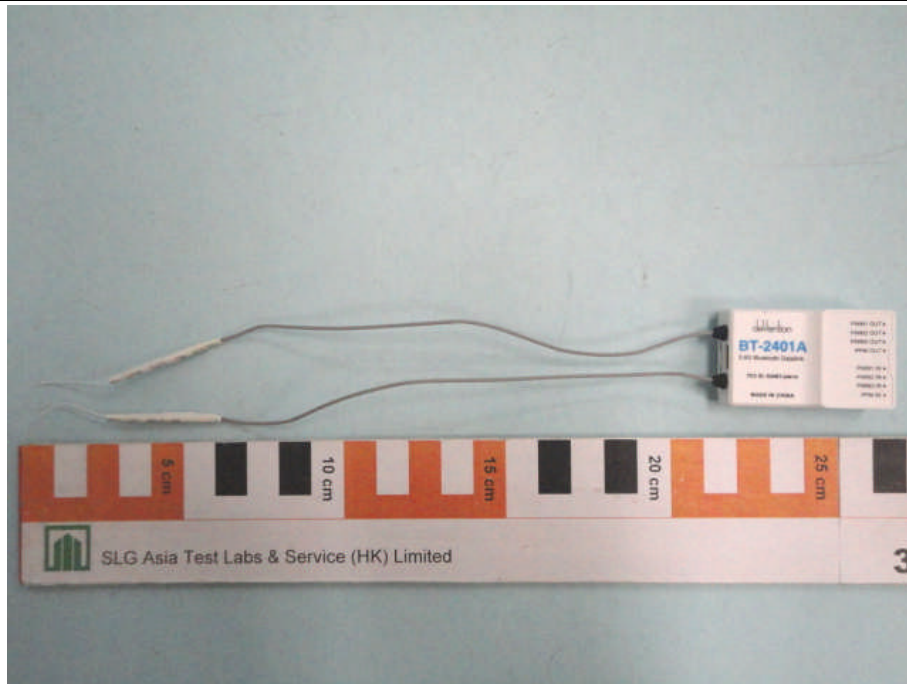
Picture 5: Main controller



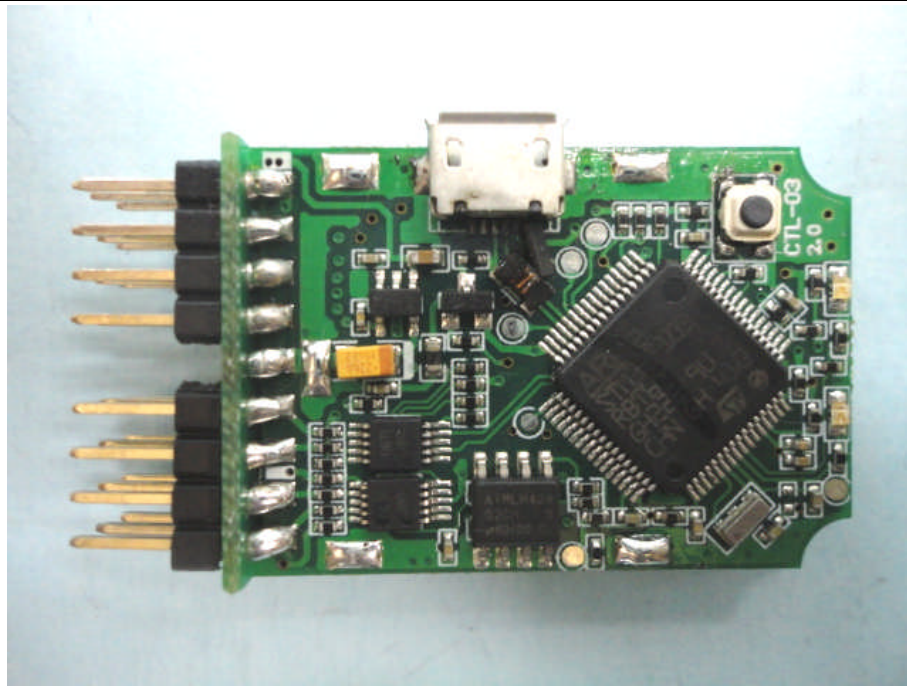
Picture 6: Main controller



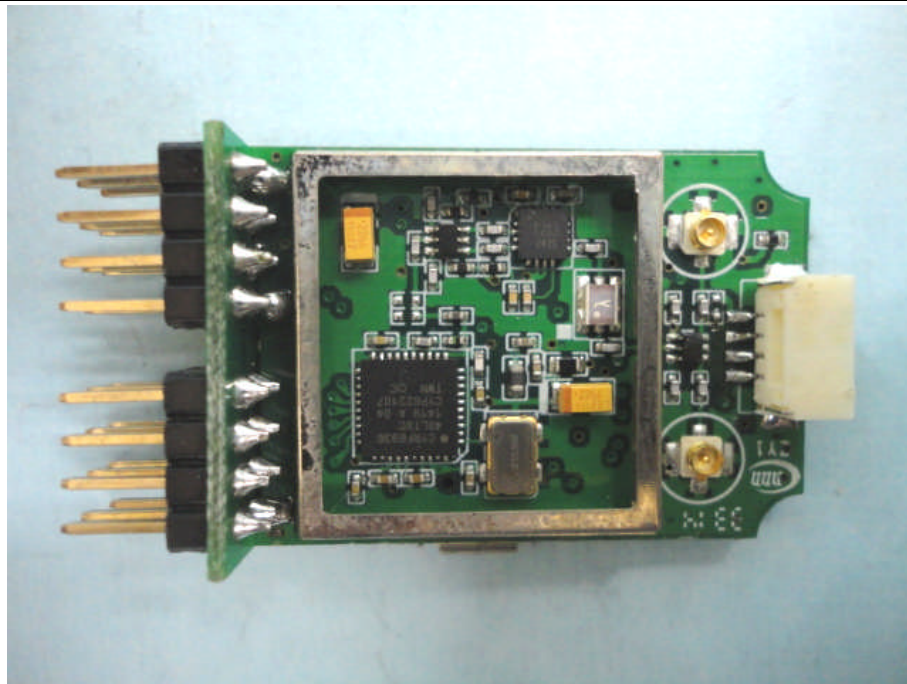
Picture 7: Main controller



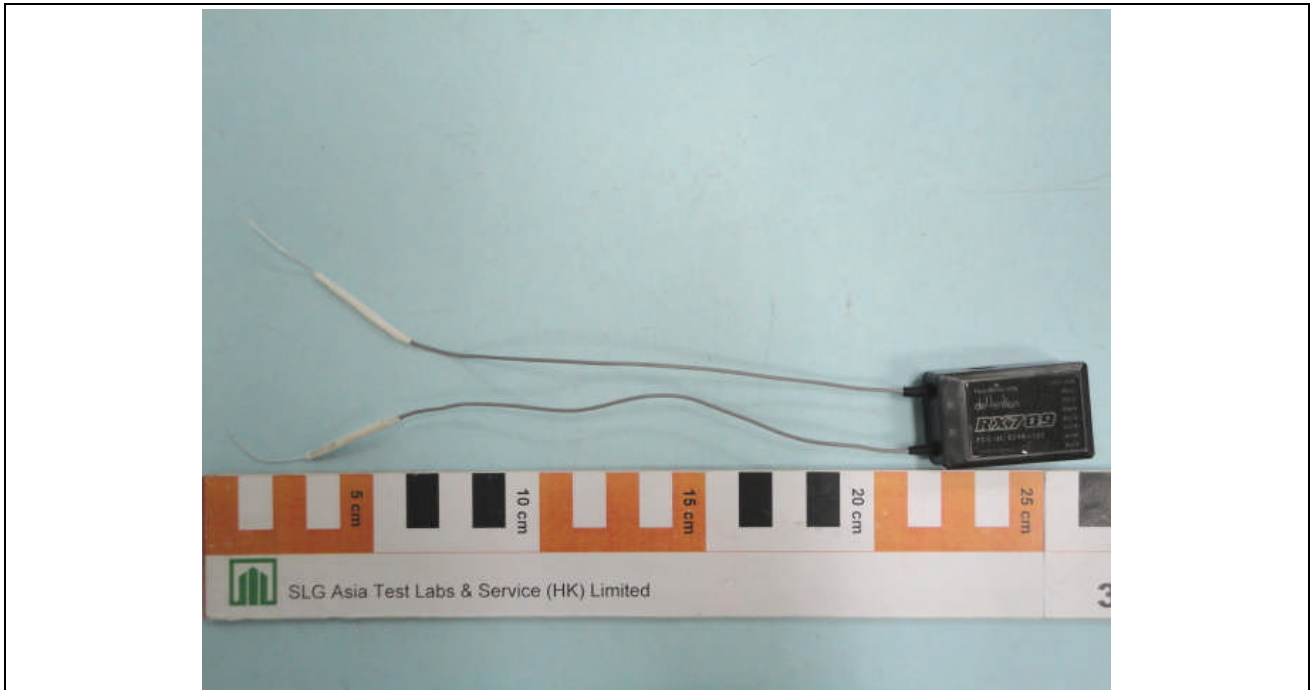
Picture 8: BT-2401A (2.4GHz DSSS Transceiver module)



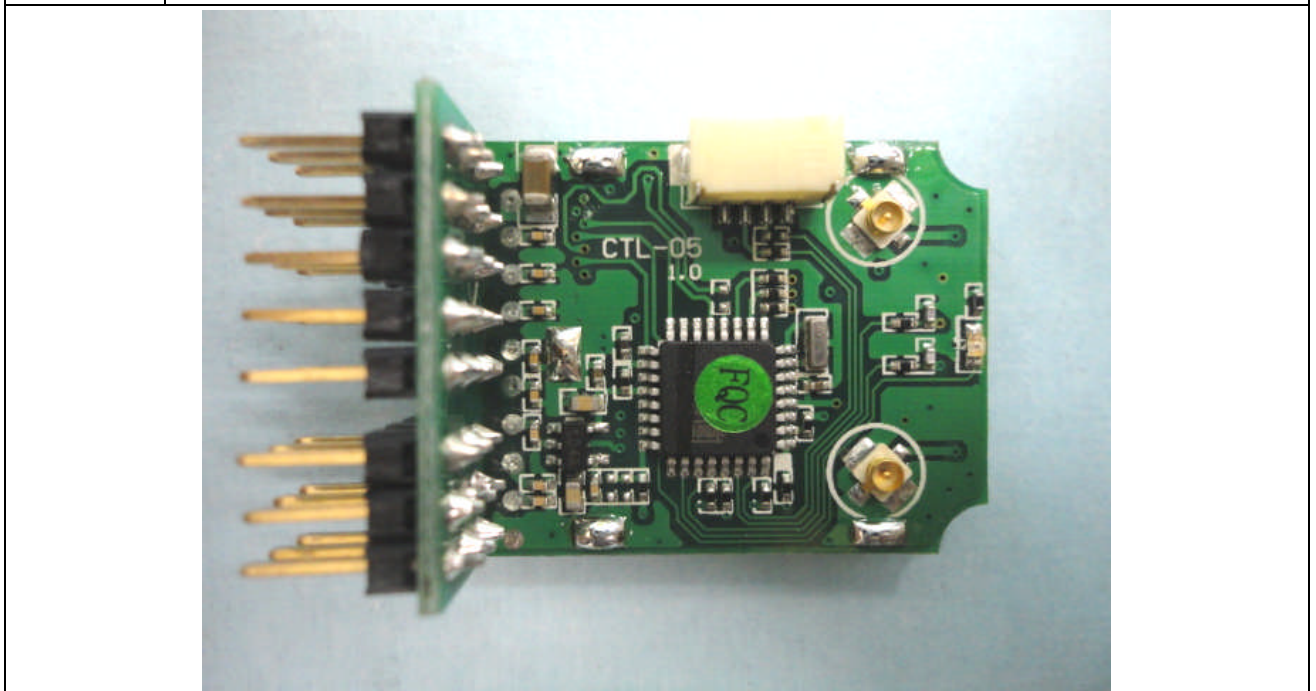
Picture 9: BT-2401A (2.4GHz DSSS Transceiver module)



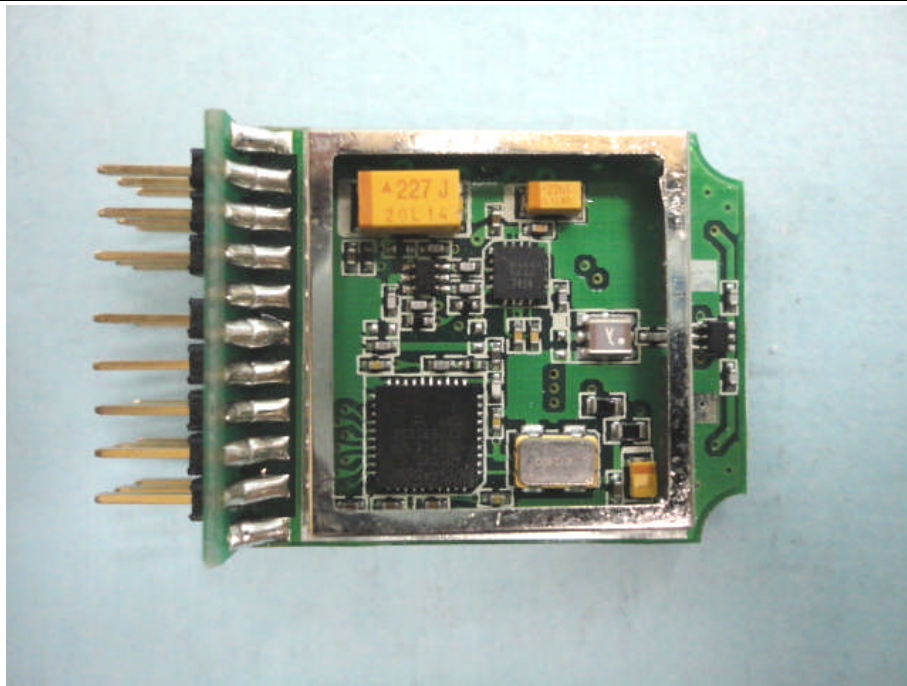
Picture 10: BT-2401A (2.4GHz DSSS Transceiver module)



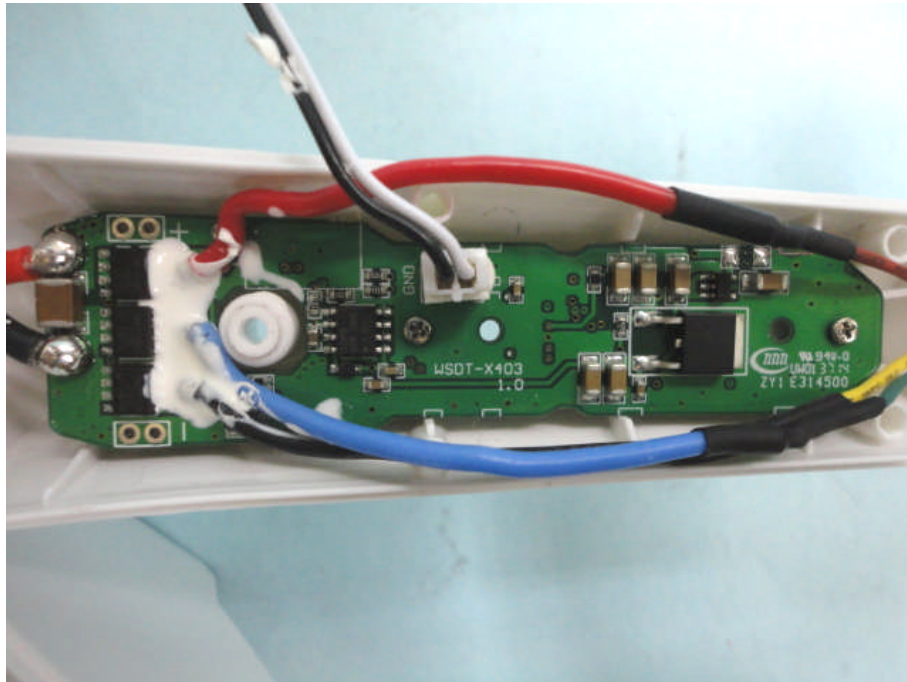
Picture 11: RX709 (2.4GHz DSSS Transceiver module)



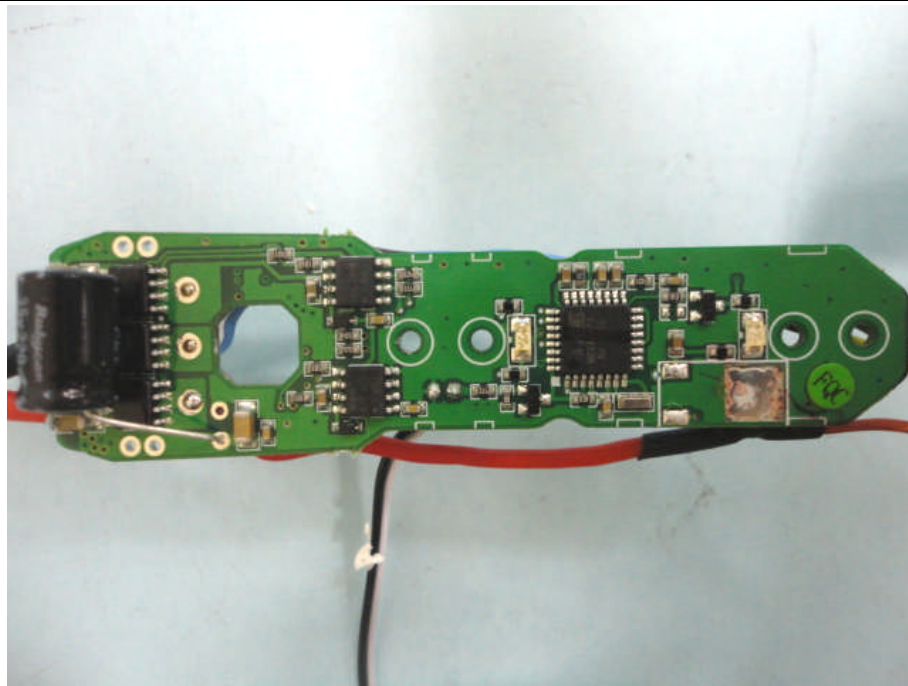
Picture 12: RX709 (2.4GHz DSSS Transceiver module)



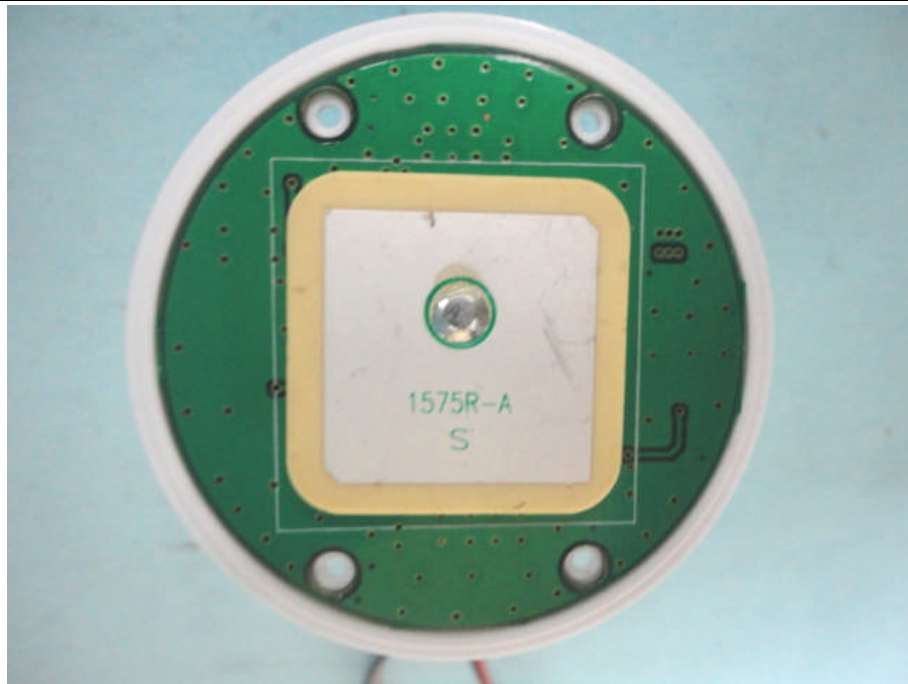
Picture 13: RX709 (2.4GHz DSSS Transceiver module)



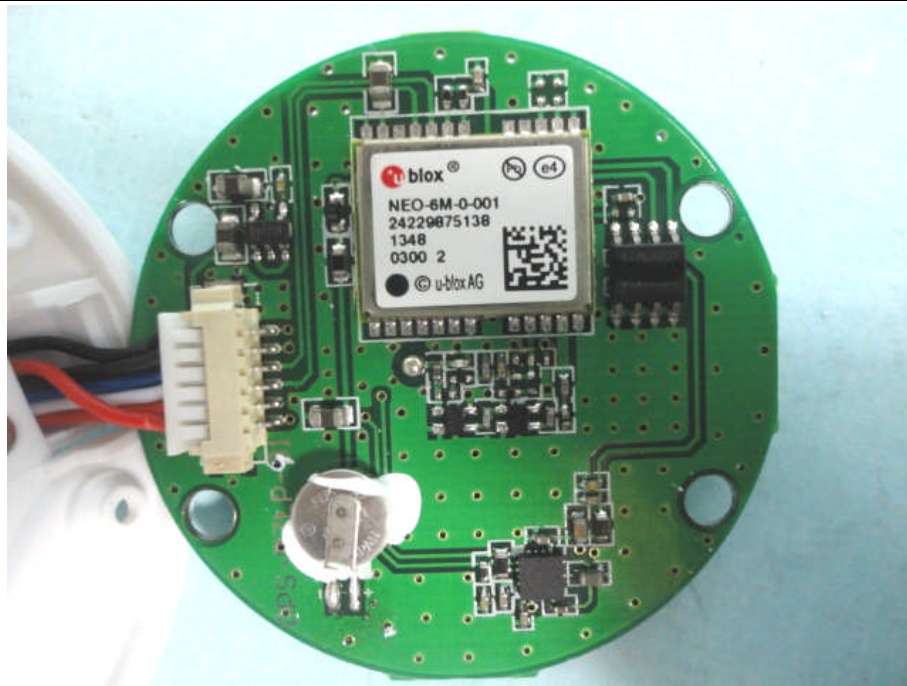
Picture 14: Motor module



Picture 15: Motor module



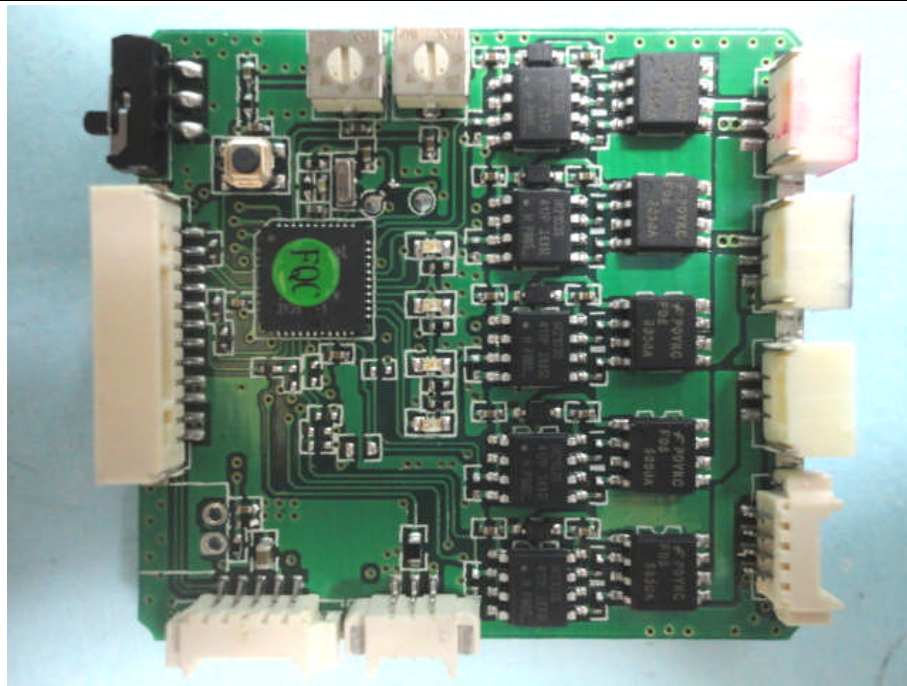
Picture 16: GPS module



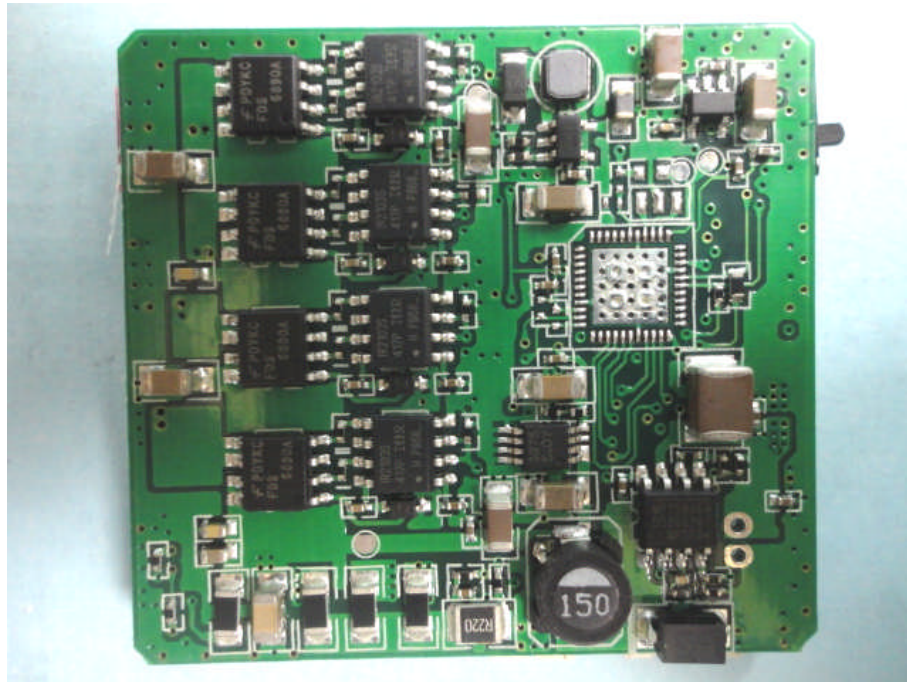
Picture 17: GPS module



Picture 18: Camera gimbal controller module



Picture 19: Camera gimbal controller module



Picture 20: Camera gimbal controller module