



BLUETOOTH HEADPHONE ADAPTER

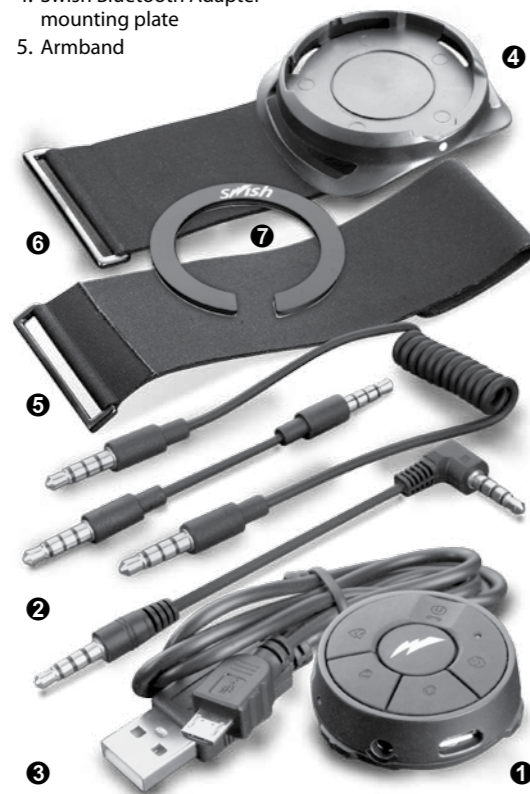


Item No: SWISHQ

USER GUIDE - GUÍA DEL USUARIO - GUIDE D'UTILISATION

PACKAGE INCLUDES:

1. Swish Bluetooth Adapter
2. 3.5mm audio cables
3. Micro USB charging cable
4. Swish Bluetooth Adapter mounting plate
5. Armband
6. Headphone band
7. Magnetic mount with adhesive backing



Declaration of Conformity with FCC Rules for Electromagnetic Compatibility

We, Mizco International, Inc., of 80 Essex Ave East, Avenel, NJ 07001, declare under our sole responsibility that the product JS1-V9H to which this declaration relates, complies with Part 15 of the FCC Rules. Operation is subject to the following two conditions: (1) this device may not cause harmful interference, and (2) this device must accept any interference received, including interference that may cause undesired operation.

Changes or modifications not expressly approved by the party responsible for compliance could void the user's authority to operate the equipment.

ICES

This Class B digital apparatus complies with Canadian ICES-003.

Declaración de conformidad con los reglamentos de la FCC para compatibilidad electromagnética

Nosotros, Mizco International, Inc., de 80 Essex Ave East, Avenel, NJ 07001, declaramos bajo nuestra responsabilidad única que el producto JS1-V9H relacionado con esta declaración, cumple con la Parte 15 de las reglas de la FCC. Su operación está sujeta a las siguientes dos condiciones: (1) este dispositivo no puede causar interferencia dañina, y (2) este dispositivo deberá aceptar cualquier interferencia recibida, incluyendo interferencia que pudiera causarle una operación no deseada.

Este equipo ha sido probado y se encontró que cumple con los límites establecidos para un dispositivo digital Clase B, de conformidad con la sección 15 de las reglas de la FCC. Estos límites están diseñados para ofrecer una protección razonable contra interferencia perjudicial cuando el equipo se opera en una instalación residencial. Este equipo genera, usa y puede emitir energía de radio frecuencia y si no se instala y usa de acuerdo con las instrucciones podría provocar interferencia perjudicial a las comunicaciones de radio. Sin embargo, no hay garantía de que dicha interferencia no ocurrirá en una instalación en particular. Si este equipo ocasiona interferencia perjudicial a la recepción de radio o televisión, lo cual se puede determinar apagando y encendiendo el equipo, se sugiere que el usuario trate de corregir la interferencia mediante una de las siguientes medidas:

- Colocar u orientar la antena receptora en otro lado.
- Aumentar la separación entre el equipo y el receptor.
- Conectar el equipo una salida o circuito distinto al que está conectado el receptor.
- Consultar a su proveedor o un técnico de radio o televisión con experiencia para que le ayuden.

Mizco International, Inc. no es responsable por cualquier interferencia causada por modificaciones no autorizadas a este equipo. Dichas modificaciones podría invalidar la autorización del usuario para operar este equipo.

ICES

Este aparato digital Clase B cumple con el ICES-003 de Canadá.

Déclaration de conformité à la réglementation FCC en matière de compatibilité électromagnétique

Nous, Mizco International, Inc., sis au 80 Essex Ave East, Avenel, NJ 07001, déclarons sous notre seule responsabilité que le produit JS1-V9H auquel se réfère la présente déclaration, est conforme aux normes énoncées à l'alinéa 15 de la réglementation FCC. Le fonctionnement est assujéti aux deux conditions suivantes: (1) cet appareil ne peut pas provoquer d'interférence nuisible, et (2) cet appareil doit accepter toute interférence reçue, y compris des interférences pouvant entraîner un fonctionnement non désiré.

Cet appareil a été contrôlé et jugé conforme aux limites imposées pour les unités numériques de classe B, en vertu de l'alinéa 15 de la réglementation FCC. Ces limites visent à assurer une protection raisonnable contre les interférences en milieu résidentiel. Cet appareil génère, utilise et peut émettre de l'énergie radioélectrique et, s'il n'est pas installé et utilisé selon les instructions fournies, il peut causer des interférences dans les communications radio. Néanmoins, aucune installation n'est par définition exempte de ce phénomène. Si cet appareil cause effectivement des interférences nuisibles lors de la réception d'émissions radio ou télévisées (et il suffit, pour s'en rendre compte, d'allumer et d'éteindre l'appareil), l'utilisateur devra tenter de corriger ces interférences en prenant l'une des mesures suivantes:

- Réorienter ou changer la position de l'antenne réceptrice.
- Augmenter la distance entre l'équipement et le récepteur.
- Brancher l'équipement sur une prise de courant appartenant à un circuit différent de celui sur lequel est branché le récepteur.
- Demander l'assistance du fournisseur ou d'un technicien de télé ou de radio expérimenté.

Mizco International, Inc., n'est pas responsable des interférences causées par des modifications non autorisées de cet équipement. De telles modifications peuvent rendre nulle l'autorisation accordée aux utilisateurs de se servir de cet équipement.

ICES

Ce périphérique numérique de classe B est conforme à la norme canadienne ICES-003.

For additional languages please visit our support page at: www.DigipowerSolutions.com/support.



Questions? Problems? Picked up the wrong item? Before RETURNING to the Store, please give our customer service team a chance to help. Call us toll free at: 1.800.838.3200 for a seamless and speedy resolution.

• ¿Preguntas? ¿Problemas?

¿Se compró el producto equivocado?

Antes de REGRESARLO a la tienda, por favor dele una oportunidad a nuestro personal del servicio al cliente a que le ayuden.

Llámenos gratuitamente al: 1.800.838.3200 para una resolución rápida y sin problemas.

• Des questions? Des problèmes?

Vous avez ramassé le mauvais article?

Avant de REVENIR au magasin, laissez la chance à notre

équipe du Service à la clientèle de vous aider. Appelez-nous sans frais au numéro 1.800.838.3200 pour que nous puissions corriger rapidement la situation.



Year Warranty
Garantía de un año
Garantie d'un an



©2015 Mizco International, Inc.
Avenel, New Jersey

All rights reserved.

Todos los derechos reservados.

Tous droits réservés.

www.digipowersolutions.com

tel: 800-838-3200

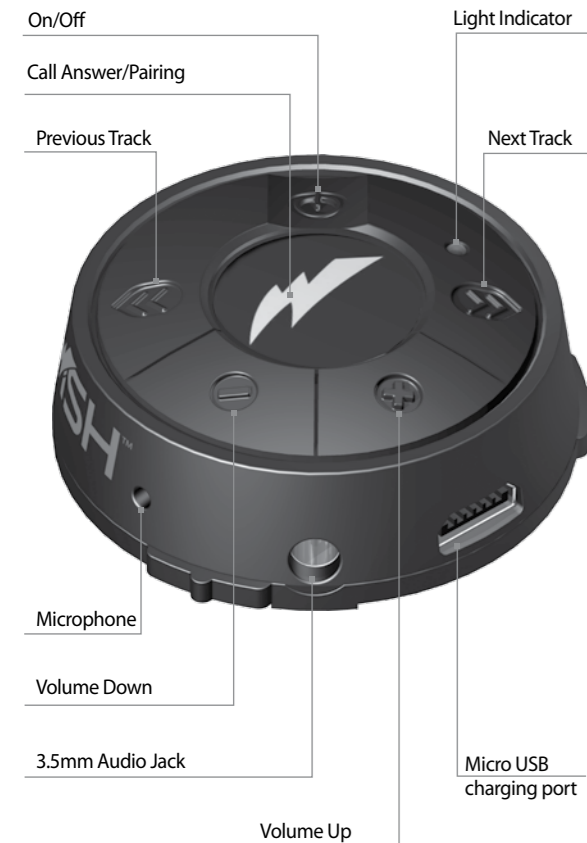
email: digipowersolutions@mizco.com

DIGIPOWER is a registered trademark of Mizco International Inc.

DIGIPOWER es una marca registrada de Mizco International Inc.

DIGIPOWER est une marque de commerce enregistrée de Mizco International, Inc.

PRODUCT DIAGRAM



USING THE SWISH WITH THE MAGNETIC MOUNT

- For headphones with a flat surface on the outside of the earpiece measuring 1.5" (38mm) or greater you can use the magnetic mount to attach the Swish to your headphones
- Peel off the paper backing on the mounting piece and apply to the backside of the earcup with the 3.5mm jack. The open part of the ring should be facing downward (6 o'clock position)
- Attach the Swish BT Adaptor to the magnetic plate.
- There are small magnets inside the body of the Swish to hold it in place and a notch on the back to keep it in the correct position.
- The power button on the Swish should be facing upward (12 o'clock position)
- Attach the audio cable between the Swish and your headphones
- See USER INSTRUCTION CHART for operation of the SWISH Bluetooth adapter

USING THE SWISH WITH THE ARMBAND AND MOUNTING PLATE

- Insert the Swish onto the mounting plate so a short clockwise turn aligns the audio jack with the white dot on the side of the mounting plate
- Feed the buckle through the left or right slot on the mounting plate. The long Velcro strip needs to be facing outward
- Loop the other end of the strap through the buckle and tighten
- Place on your arm and feed the strap through the opposite slot, adjust so the strap is comfortable. Press the strap down against the Velcro pad to hold it in place.
- See USER INSTRUCTION CHART for operation of the SWISH Bluetooth adapter

USING THE SWISH WITH THE HEADPHONE BAND AND MOUNTING PLATE

- Insert the Swish onto the mounting plate so a short clockwise turn aligns the audio jack with the white dot on the side of the mounting plate.
- Feed the buckle through the left or right slot on the mounting plate. The long Velcro strip needs to be facing outward.
- Loop the other end of the strap through the buckle and tighten
- Place on the band of your headphones, close to the earpiece with the audio jack
- Loop the strap through the opposite slot and secure it on the headband. Press the strap down against the Velcro pad to hold it in place.
- See USER INSTRUCTION CHART for operation of the SWISH Bluetooth adapter

PAIRING AND USING THE SWISH BLUETOOTH ADAPTER

- On first use charge the Swish by connecting the micro USB cable to a USB power supply or your computer
- The red LED will remain on while the Swish is charging and turn off when it is fully charged
- Press and hold the power button for 3 seconds to turn on the device
- Press and hold the center button for 3 seconds to put the Swish into pairing mode. Make sure your devices' Bluetooth is turned on and it is set for discoverable
- "Swish" will show up in the list of devices and should now be paired
- See USER INSTRUCTION CHART for operation of the SWISH Bluetooth adapter

USER INSTRUCTION CHART

Power on	When the product is off, hold the Power button for 3 seconds. The blue lights flashes three times and a tone is heard through your headphones/earbuds.
Pair & connect	When the receiver is in standby or playing music, press the play button for 3 seconds until the red and blue lights flash alternately. Operate your Bluetooth Smartphone/Tablet to search for this Bluetooth receiver, there is a tone when it is connected.
Answer calls	After connecting, when an external call comes in, short press the power button to answer, there is a beep.
Hang up calls	During a call, short press the power button to hang up, there is a tone.
Refuse calls	When an external call comes in, hold the power button 3 seconds to reject, there is a beep.
Voice dial	Connect a Bluetooth phone and in standby mode, short press the power button to voice dial (your phone must support this function)
Voice change	During a call, hold the power button for 3 seconds, the voice switches to the phone. Do the same operation, the voice switches to Bluetooth (Note: cannot shut down during a call)
Redial the last dialed number	Connect a Bluetooth phone in standby mode, double-click the power button, there is a beep
Mic mute	During a call, hold the volume down button for 3 seconds, the red and blue lights flash simultaneously twice, there is a tone, the other party cannot hear the sound. The same operation can resume the microphone sound.
Line out	Plug in your headphones or speakers audio cable to play music
Volume adjust	Short press volume up button to increase the volume, press the volume down key to decrease (beep is heard when sound is at Min or Max)
Play and pause	In standby mode, press the play button to play or pause music.
Previous/next	When playing music press Previous button to play the last song, short press the next button to play the next
iPhone battery status	Supported
Delete the Pairing information	Hold the power button and volume down button for 7 seconds, the red and blue lights will flash twice.
Exit the pairing mode automatically	If receiver is in Pairing state but not connected it will automatically exit pairing mode within 5 minutes.
Auto power-off	Receiver will shut down automatically if there is no connection for 10 minutes or the battery level is very low.
Manual shutdown	Power on state, hold the power button for 3 seconds to shut down, the red light flashes 3 times with a tone

LED FUNCTION CHART

Power on	Blue light flashes 3 times
Power off	Red light flashes 3 times
Standby not connected with mobile phone	Blue light flashes once every 5 seconds
standby connected with mobile phone	Blue light flashes once every 7 seconds
Calling in	Blue light flashes 2 times every 5 seconds
On a call	Blue light flashes once every 7 seconds
Mute	Red and blue lights flash twice
Charging	Red light remains on
Full charge	Red light turns off
Low battery level	Red Light flashes

PRODUCT SPECIFICATIONS

Size:	62.4(L)*49.5(W)*23.8(H)mm
Weight:	18.6g
Button:	Power button, multi-function button, Previous button, Next Button, volume +, volume -
LED light:	Red LED*1 Blue LED*1
Microphone:	One 4015 Omnidirectional -42±2dB
Battery:	Lithium polymer battery422417, 85mAh
Antenna:	Built-in Antenna
Charge port:	Micro USB
Line Out audio interface:	3.5mm Audio interface
Charge time:	2 hours (approximately)
Bluetooth version:	Bluetooth4.0

HARDWARE SPECIFICATIONS

Bluetooth chip	CSR8645
Transmit power:	CLASS2 MAX4dbm
Receiver sensitivity:	-88dbm
Working frequency(HZ)	2.4GISM band 2.402-2.480GHZ
Modulate way:	GFSK, TT/4 DQPSK, 8DPSK
Rated power(W)	10mW
Rated operational voltage(V)	3.7V
Rated charging voltage(V)	5V

SOFTWARE SPECIFICATIONS

BT software version:	1.5
BT HF software version:	1.2
Bluetooth stereo	Stereo
AVRCP	Supported
AAC	Supported
APT-X	Supported
A2DP	Supported

LIMITED WARRANTY:

Mizco's responsibility with regard to this limited warranty shall be limited solely to the repair or replacement at its option, of any product, which fails during normal consumer use for a period of 2 Years from the date of purchase. This warranty does not extend to damage or failure, which results from misuse, neglect, accident, alteration, abuse, improper installation or maintenance. This warranty does not extend to equipment used with this product. If at any time during the 2 Year period following the purchase the product fails due to defects in materials or workmanship, return the defective product with freight prepaid and proof of purchase. All brands represented herein are registered trademarks of their respective manufacturers. Design and specifications are subject to change without notice.

WARNING! IMPORTANT SAFETY INSTRUCTIONS!

Failure to read and follow these safety instructions could result in fire, explosion, electrical shock or other hazard, causing serious and/or fatal injury and/or property damage.

1. Do not modify, disassemble, open, drop, crush, puncture or shred the product
2. Do not expose the product to rain or water
3. Keep the product away from open flame or sunlight to prevent heat build-up
4. Keep the product away from children. This product is not a toy.
5. Ensure that all persons who use the product read and follow these warnings and instructions.