

USER MANUAL

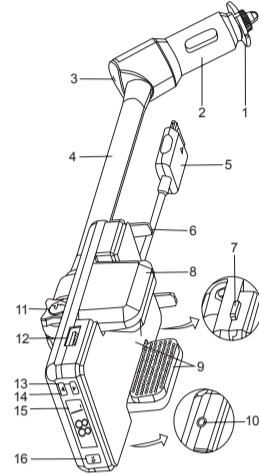
FM Transmitter

Thank you for purchasing this Products.
Please carefully read this instruction manual for properly setup instructions.
Compatible with iPod/iPhone/MP3/MP4

PRODUCTS FEATURES

- * Hi-Fi FM stereo transmitter allows you to fully enjoy your music.
- * Cigarette Lighter power supply mode.
- * Suitable for all iPhone & iPod / all Car / all MP3 player.
- * Supports iPhone hands-free feature through your car speaker system.
- * Support charging and FM transmitter simultaneously.
- * Support mobile phone and GPS charging with output USB socket.
- * LCD frequency display with backlight for easy to read display.
- * Adjustable arch design.
- * High quality silicone fixer prevents the this products from rotating.
- * The flexible goose-pipe makes it convenient to find the best position for your device. It is compatible in the worldwide. Goose-pipe with rotation prevention design keeps your devices steady & firm in its position.

DEVICE APPEARANCE



1

1. Silicone Fixer: Prevents this products from rotating.
2. Cigarette Power Adapter: Insert into the cigarette lighter hole.
3. LED Power Indicator Light: Indicates operating status.
4. Flexible goose pipe: for easy positioning.
5. iPod 30 Pin Connector: For use with iPhone and iPod.
6. Adjustable Feet: Keeps your device down.
7. Release Button: Release your holder.
8. Adjustable Holder: To hold your device.
9. Silicone Protector: Protect your device from being scratched.
10. 3.5 Audio Input Hole: External audio input.
11. Screw: Adjust tightness.
12. USB Port: Output voltage DC 5V 800mA.
13. "▼": Frequency decreases.
14. "▲": Frequency increases.
15. LCD panel: display FM frequency.
16. "QS": quick set.

STANDARD ACCESSORIES

- 3.5 Stereo cable

OPERATING GUIDE

Preparation for usage

1. Insert the cigarette power adapter into the car's cigarette lighter. Now adjust this products to a suitable position and then put your device onto the cradle.
2. Turn on the cars FM radio band and adjust to the frequency as set on this products.

Press and hold "▲" or "▼" button to scroll through the different radio frequencies

Work with iPod

1. Place the iPod on this products cradle, and adjust the cradle to hold the iPod securely.
2. Connect the iPod to this products 30pin connector. Now use the 3.5 stereo cable to connect the iPod and this products for audio.

2

Work with iPhone

1. Place the iPhone on this products cradle, adjust the cradle to fit the iPhone securely, and Connect the iPhone to this products 30pin connector. (as IMG01)
2. Now use the 3.5 stereo cable to connect the iPhone and this products for audio. (as IMG02)
3. Now you can select to talk or continue to enjoy music through car speaker systems .



IMG01



IMG02

Using with others mechanisms

1. Place the device on this products cradle, and adjust the cradle to hold the device securely.
2. Use the 3.5 stereo cable to connect your device and this products for audio.

Please make sure your device has audio playback.

USB Charger

Connect your USB device to this products USB port to charge your device.

Please check if your USB device supports the standard.

SPECIFICATIONS

All specifications are subject to change without notice.

Frequency

Band	FM Frequency
Quality	Hi-Fi stereo
Range	88.1 ~ 107.9MHz
Interval	0.1MHz

3

Stability	10ppm (-10 C ~+ 55 C)
Clutter & Harmonic	< -60dB
Effective Range	About 5m
Remote Range	≥3m

Power

Working Voltage:	DC 12V ~ 24 V
USB Output Voltage:	DC 5V 800mA

Audio

Stereo separation	40dB
Frequency reponse	20Hz~16KHz
Audio Distortion	≤0.1% (F=75KHz, f=1KHz)
SNR:	≥45dB (1KHz 100%)

Physical

Product size	110 x 65.5 x 40 mm
Weight	191 g

Please avoid using local radio signal frequencies to ensure better sound quality.
Please adjust the volume on the device or the car stereo to ensure proper volume levels.
Please carefully check the electricity capacity of your equipment when using as a USB charger

WARNING

WARRANTY WILL BE VOIDED IF MODIFICATIONS OR ALTERATIONS HAVE BEEN MADE TO THE DEVICE. DEVICE CONTAINS REMOVABLE PARTS PLEASE MONITOR WHEN AROUND CHILDREN.

4

MAINTENANCE ATTENTION TO THE ISSUES

1. Please use a clean soft cloth to clean this device.
2. For prolonged use of the device, device should be disconnected from vehicle cigarette lighter port.

TROUBLESHOOTING

Please reference below for troubleshooting help with your device.

1. Power indicator light does not emit

SYMPTOM	SOLUTION
Not fully inserted into the car cigarette lighter hole	Fully inserted into the car cigarette lighter hole

Fuse Spec: Ø5 x 20mm, 250V/2A

2. Cars speaker volume is too low

SYMPTOM	SOLUTION
The volume of audio device is too low	Adjust the device volume higher
Car Speaker volume is too low	Adjust the car volume
Bad contact of audio	Recheck if audio stereo cable is securely plugged
Stereo cable is damaged	Replace with a new one

3. There is static from the car speaker

SYMPTOM	SOLUTION
Strong local radio signal interference	Change the frequency

4. There is an echo when using with the iPhone

SYMPTOM	SOLUTION
Volume is too high	Adjust iPhone or car

5

5. Audio output on one side is lower than the other when using the iPhone

SYMPTOM	SOLUTION
User is too far away from the iPhone	User needs or maintain no more than 1 M distance for effective hands-free

FM RADIO TRANSMITTER uses the iPhone MIC, effective speaking distances should be around 1 M

6. USB device is not charging

SYMPTOM	SOLUTION
Use of non-Standard	Replace with a standard
Non-Standard USB	Stop the charging

7. No sound coming from the car speaker

SYMPTOM	SOLUTION
Device setting is mute or has stopped	Check the device settings

iPod® & iPhone® is a trademark of Apple Computer Inc., registered in the U.S. and other countries

RULE STATEMENT

This device complies with Part 15 of the FCC Rules. Operation is subject to the following two conditions:

- (1) this device may not cause harmful interference,
- (2) this device must accept any interference received, including interference that may cause undesired operation.

changes or modifications not expressly approved by the party responsible for compliance could void the user's authority to operate the equipment.

6

This equipment has been tested and found to comply with the limits for a Class B digital device, pursuant to Part 15 of the FCC Rules. These limits are designed to provide reasonable protection against harmful interference in a residential installation. This equipment generates, uses and can radiate radio frequency energy and, if not installed and used in accordance with the instructions, may cause harmful interference to radio communications. However, there is no guarantee that interference will not occur in a particular installation.

If this equipment does cause harmful interference to radio or television reception, which can be determined by turning the equipment off and on, the user is encouraged to try to correct the interference by one or more of the following measures:

-- Reorient or relocate the receiving antenna.

-- Increase the separation between the equipment and receiver.

-- Connect the equipment into an outlet on a circuit different from that to which the receiver is connected.

-- Consult the dealer or an experienced radio/TV technician for help.