

Xlim
DIGITAL JEWELRY

The Fashion MP3-Xlim

xlim Owner's Manual



A Atel system, Inc.

1. Getting Ready

■ CAUTION

To guarantee the stable operation, do not expose the unit to the excessive heat place, cold place or humid place.

Do not give a shock to the player.

Do not remove cover (or back).

No user-serviceable parts inside.

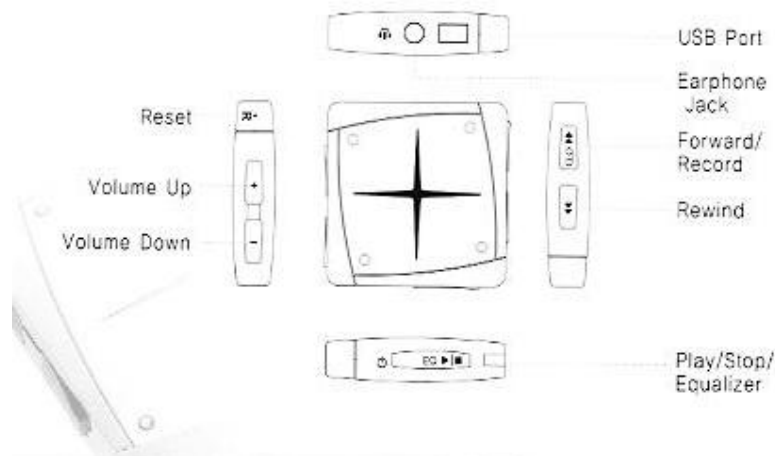
Refer servicing to qualified service personnel or service center.

FAT16 file format is preferred than FAT32 in operation.

2. Features

- Unique Fancy Design with Luxury LED
- Firmware Upgrade
 - : Provides the latest upgrade features via firmware upgrade
- 5 Preset EQ
 - : Normal, POP, Jazz, Classic, Rock
- Support Removable Disk for mass memory storage : 128MB, 256MB
- Built-in rechargeable battery : Li-ion
- Charging directly from the USB Port
- Voice Recording function : 8 hours available
- Create your own playlists
- Cuteness and lightness : Jewelry attached square and 18.5g
- Convenient neck strap

3. Nomenclature



4. Unit and Accessories



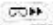
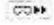
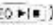
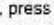
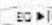
5. How to Play the Xlim

- **Play / Power On** ()
To turn on the player and play music, press the play button () for a second with connecting the earphone.
During the player is turned on, the yellow lamp will blink.
- **Stop / Power Off** ()
To turn off the player, press the play button () for three seconds or long.
Also, the power will be automatically turned off by removing the earphone from the player.
- **Select Next Music** ()
To select next music for MP3, press the forward button () for the short time during playback. The next music will be played with the beep sound.
- **Select Previous Music** ()
To select previous music, press the rewind button () for the short time during playback. The previous track will be played with the beep sound.

6. How to Play the Xlim

- **Moving forward track when playing a Music** ()
To move playing track to forward during playback, press the forward button () for the time as long as you want to move.
- **Moving backward track when playing a Music** ()
To move playing track to backward during playback, press the backward button () for the time as long as you want to move.
- **To select EQ mode** ()
Press the play button () to select EQ mode for the short time during playback. Every time you press this button, the EQ mode scrolls in following sequential order.
Sequential order)
NORMAL -> POP -> CLASSIC -> ROCK -> JAZZ
- **Volume Up** ()
Press the volume up button () during playback.
- **Volume Down** ()
Press the volume down button () during playback.

7. Voice Recording Mode

- Voice Recording Start ()
Press the forward button () until flashed the red lamp with connecting the earphone. .
- To Stop Recording ()
To stop the voice recording, press the stop button () for 3 seconds during recording the voice.
The recorded files are saved as REC00001.mp3, REC00002.mp3, REC00003.mp3 ... with recording sequence.
- To play the Recording files ()
To play the recording file, turn on the player and then searching the recording file with the forward or rewind buttons.

8. PC Connection

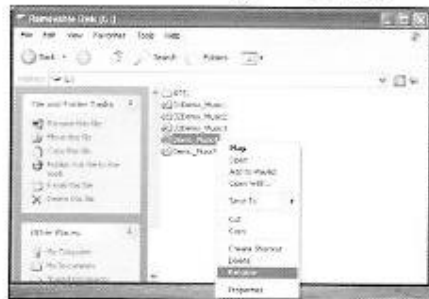
- Connect the USB cable (provided) to the USB port of your PC.
- Connect the other end of USB cable to the USB port of your Xlim.

9. Down Loading the MP3 Files



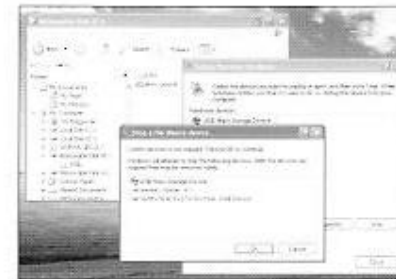
- When the Xlim is connected to PC via the provided USB cable, your PC regards the Xlim as the mass storage driver automatically at Windows 2000/ME/NT/XP. In the case of the Windows 98, your PC requires the installation of the provided device drivers.
- To copy the MP3 files, select the MP3 files that you want to copy and drag and drop those files to the Removable Disk, which means the mass storage driver.
- Do not disconnect the USB cable while copying files to your Xlim.


10. Advanced Features Playback with own Play Filelists



- Default playback sequence is set to be alphabetical order.
- If you want to play music with your own sequence after completing file copying, rename the files with putting the number (01, 02, 03---) to head of a music title as shown in following example.
(ex) 01Demo_Music1, 02Demo_Music2, 03Demo_Music3---

11. Disconnecting From the PC



- Click Icon ()
- Highlight a Hardware device (USB Mass Storage Device) and then click Stop button on Windows.
- Disconnect USB Cable
- Red and Yellow lights are flashed on Xlim.
- Then your Xlim is ready to playback the downloaded MP3 files.

12. Charging The Battery

- To charge the built-in battery of Xlim, connect to PC via the provided USB Cable.
- The Red lamp lights and battery charging begins. When charging is completed, the Yellow lamp lights.
Red lamp ● : On going the battery charging
Yellow lamp ● : Complete the battery charging



- The Charging Request Alarm - during playback
 - When the red and yellow lamp flash during playback, it indicate that the battery is low.
 - When the battery discharge, the red and yellow lamp flash 10 times after stopping playback
- How to check the battery - Not Connect the earphone
 - If you press the play button without connecting the earphone, you will check the condition of the battery.
 - When the red and yellow lamp flash 3 times, it indicate that state of the battery is low.
 - When the yellow lamp flash 4 times, it indicate that state of the battery is good

13. Installation of the Driver for Windows 98 ①

1. Execute "xlim98Eng.exe" in the provided Installation CD



13. Installation of the Driver for Windows 98 ②

2. Selecting Complete Installation and Click "Next" button.



13. Installation of the Driver for Windows 98 ③

3. Click "Install" button.



14. How to Upgrade the Firmware ①

- Connect the USB Cable to PC.
- Download the latest firmware at our website.
- Make ATEL Folder in the removable disk. Select ATEL Folder and Copy Update File into ATEL Folder.



14. How to Upgrade the Firmware ②

- Disconnect USB Cable.
- Press the play button () to turn the player on.
- Wait until red and yellow lights are flashed to complete the upgrading the firmware.
- Press the play button () to turn the player on.
- To confirm the upgrading the firmware, check the firmware version.



15. Specifications

Category	Item	Spec.
Audio	Channel	Stereo
	Frequency	20Hz - 20,000Hz
	Audio Output	5mW(R)+5mW(L) @16Ω Earphone(Max)
	Format	Mpeg1/2/2.5 Audio Layer3
	Play Time	8Hours (Typ)
	Memory	64MB / 128MB / 256MB
PC Interface	System	Windows98 / 2000 / ME / XP / NT / Mac OS (over 9.x)
	Battery	Rechargeable Li-Ion
Power	Battery Charge	USB Port
	USB Interface	USB 1.1 (5Mbps Max)
General	Size	43(W)×43(H)×11.5(D)
	Weights	18.5g

16. Troubleshooting

Should any problem persist after you have checked described symptoms, consult your Xlim dealer or contact support at our website.

No Sound is heard from the Xlim	<ul style="list-style-type: none"> • Check the proper earphone connection to Xlim • Check the condition of the battery. • Check whether the MP3 files are downloaded.
Failed download of MP3 files	<ul style="list-style-type: none"> • Check the connection between PC and Xlim to make sure that the cable is secure. • Check whether the Xlim's memory is full.
Failed Battery charging	<ul style="list-style-type: none"> • Check the connection between PC and Xlim to make sure that the cable is secure.
Slow file copying	<ul style="list-style-type: none"> • Check whether Xlim player's file format is FAT16.
Failed Firmware Upgrade	<ul style="list-style-type: none"> • Check the name of folder and make sure that the name is ATEL. • Check the connection between PC and Xlim to make sure that the cable is secure.
Abnormal lamp operation	<ul style="list-style-type: none"> • Corrupted MP3 file may cause abnormal operation. Delete the corrupted MP3 files on your Xlim. Press the reset switch.



MEMO

This equipment has been tested and found to comply with the limits for a class B digital device, pursuant to Part 15 of the FCC Rules. These limits are designed to provide reasonable protection against harmful interference in a residential installation. This equipment generates, uses and can radiate radio frequency energy and if not installed and used in accordance with the instructions, may cause harmful interference to radio communications. However, there is no guarantee that interference will not occur in a particular installation. If this equipment does cause harmful interference to radio or television reception, which can be determined by turning the equipment off and on, the user is encouraged to try to correct the interference by one or more of the following measures:

- Reorient or relocate the receiving antenna
- Increase the separation between the equipment and receiver
- Connect the equipment into an outlet on a circuit different from that to which the receiver is connected
- Consult the dealer or an experienced radio/TV technician for help

This device complies with Part 15 of the FCC Rules. Operation is subject to the following two conditions: (1) this device may not cause harmful interference, and (2) this device must accept any interference received, including interference that may cause undesired operation.

****CAUTION: Changes or modifications not expressly approved by the party responsible for compliance could void the user's authority to operate the equipment.**



Atel systech, Inc.

TEL : + 82-31-777-5711
 FAX : + 82-31-777-5710
 www.atelsystech.com