

APPENDIX 3: Photographs of test setup

Conducted Emission



Photo 1



Photo 2

Radiated Spurious Emission (30 – 1000MHz)



Photo 1

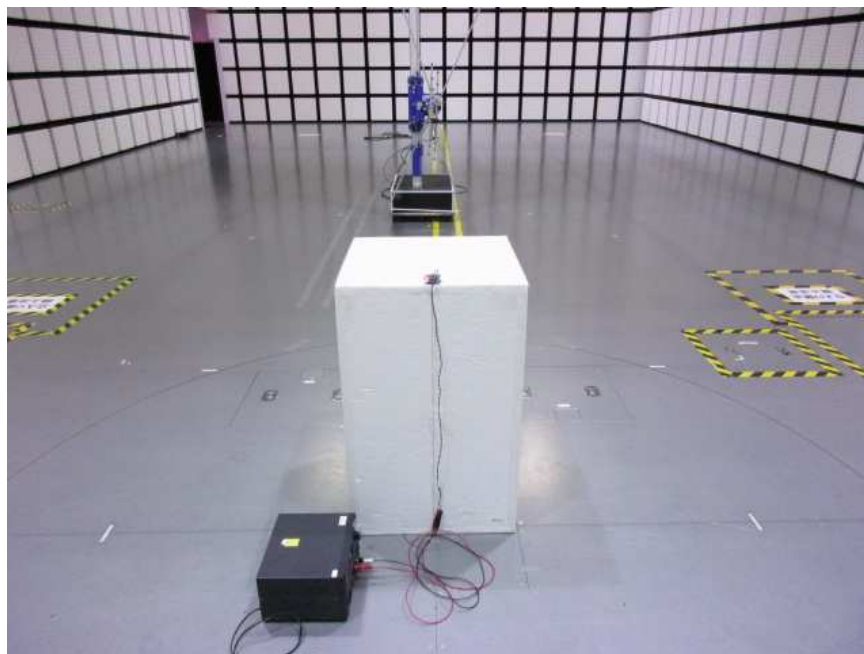


Photo 2

Radiated Spurious Emission (1 – 26GHz)

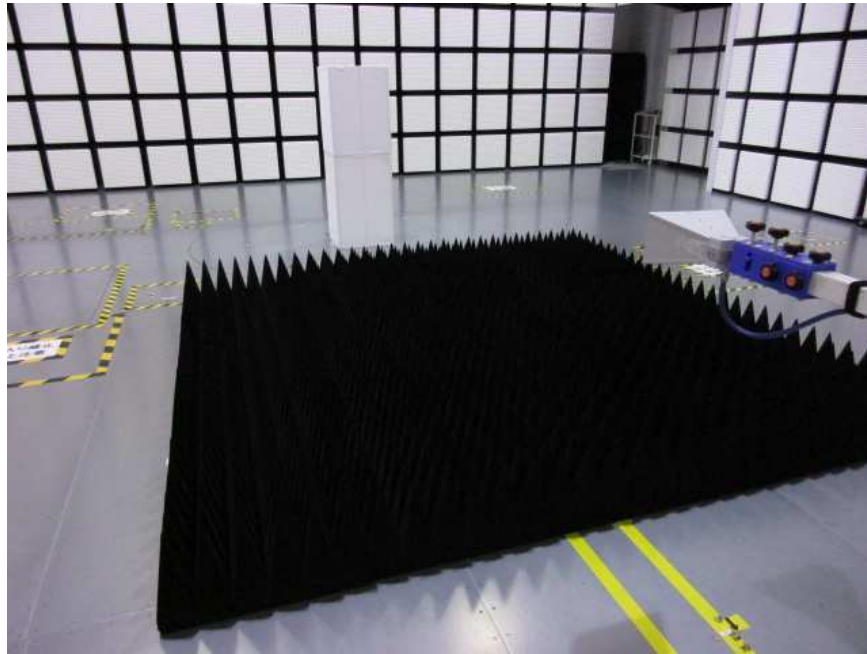


Photo 1

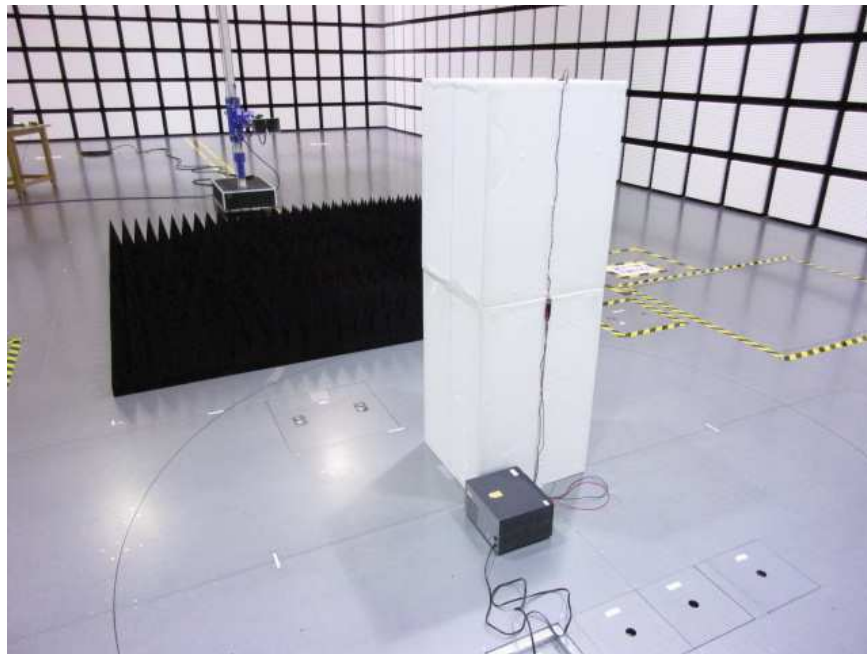
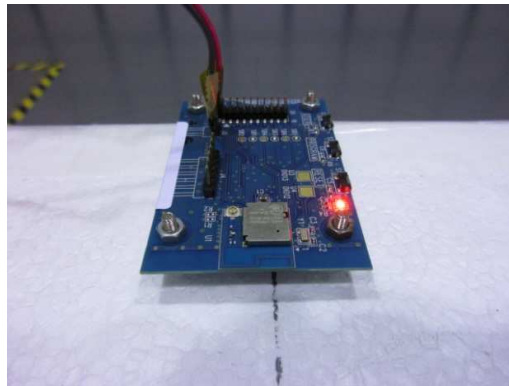


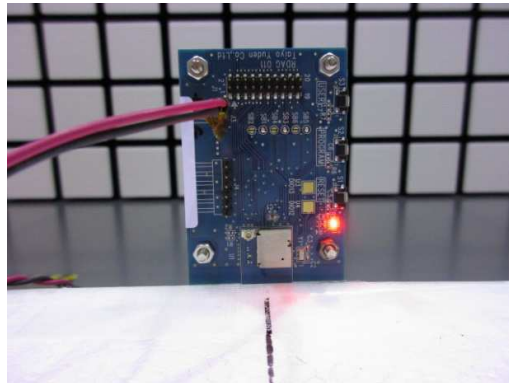
Photo 2

Worst Case Position (X-axis)

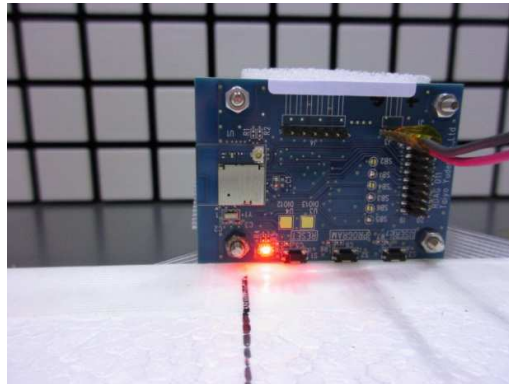
X-axis



Y-axis



Z-axis



*Use the motherboard with no metal plate, therefore this motherboard does not affect the module test condition.

End of Report

UL Japan, Inc.

Kashima EMC Lab.

1614, Mushihata, Katori-shi, Chiba-ken, 289-0341 Japan

Telephone : +81-478-88-6500

Facsimile : +81-478-82-3373