

2.4 / 5GHz Multilayer Monopole Antenna (for W-LAN)

Date: Nov/25/2011

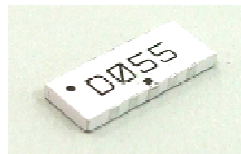
AH 104N2450D1 (2.4GHz band)

Shapes

L= 10.0 ± 0.3 mm
W= 4.0 ± 0.3 mm
T= 1.0 ± 0.3 mm

Feature

* Wide Band
* High Performance



Actual data

Efficiency : -1.3dB (73%)
Peak Gain : 2.1dBi @2450MHz
Average Gain : 0.3dBi (ZX plane-Vertical polarization)

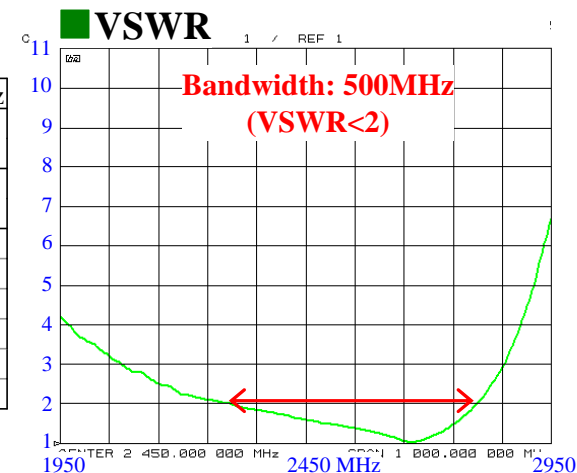


*on Taiyo Yuden's Evaluation Board (54 x 12 mm)

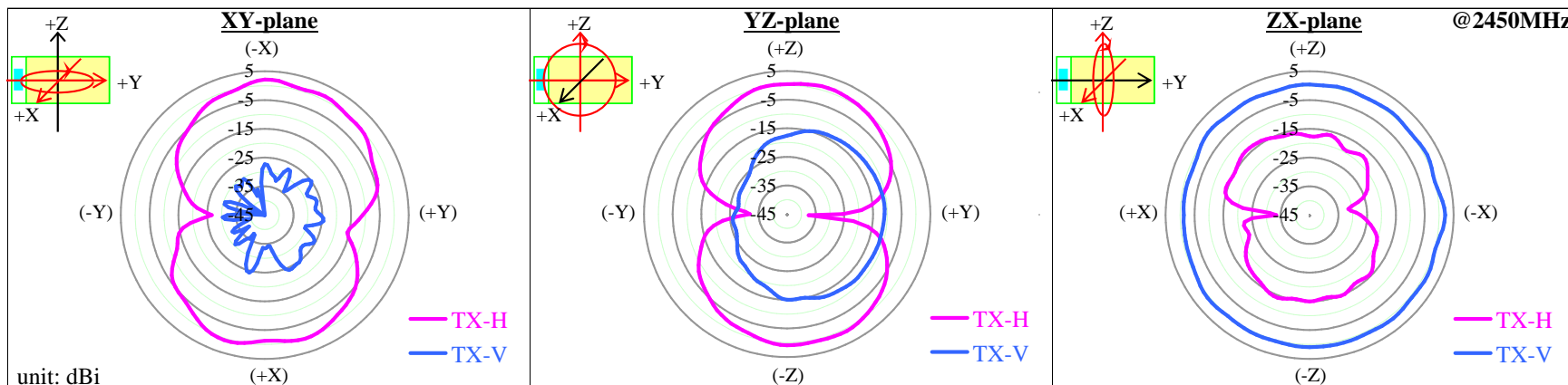
*Element-GND Distance : 1.5 mm

Electrical Characteristics

		2400MHz	2450MHz	2500MHz	
Efficiency [dB]		-1.4 (72%)	-1.3 (73%)	-1.2 (76%)	
Peak gain [dBi]		1.7	2.1	1.4	
Average gain [dBi]	XY-plane	TX-H	-2.6	-2.5	-2.5
		TX-V	-29.5	-29.0	-29.1
	YZ-plane	TX-H	-2.4	-2.5	-2.5
		TX-V	-15.1	-15.1	-15.3
	ZX-plane	TX-H	-17.1	-17.0	-16.8
		TX-V	0.3	0.3	0.5



Radiation Pattern



The data is reference only. Electrical characteristics vary depending on environment or measurement condition.

TAIYO YUDEN reserves the right to make change to the Date at any time without notice.

Before making final selection, please check product specification

2.4 / 5GHz Multilayer Monopole Antenna (for W-LAN)

Date: Sep/01/2011

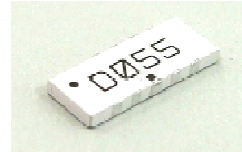
AH 104N2450D1 (5GHz band)

Shapes

L= 10.0 ± 0.3 mm
W= 4.0 ± 0.3 mm
T= 1.0 ± 0.3 mm

Feature

* Wide Band
* High Performance



Actual data

Efficiency : -1.6dB (69%)
Peak Gain : 2.4dBi

@5250MHz

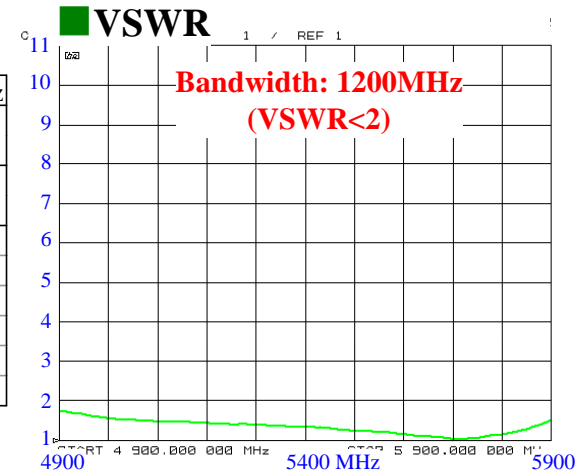


*on Taiyo Yuden's Evaluation Board
(54 x 12 mm)

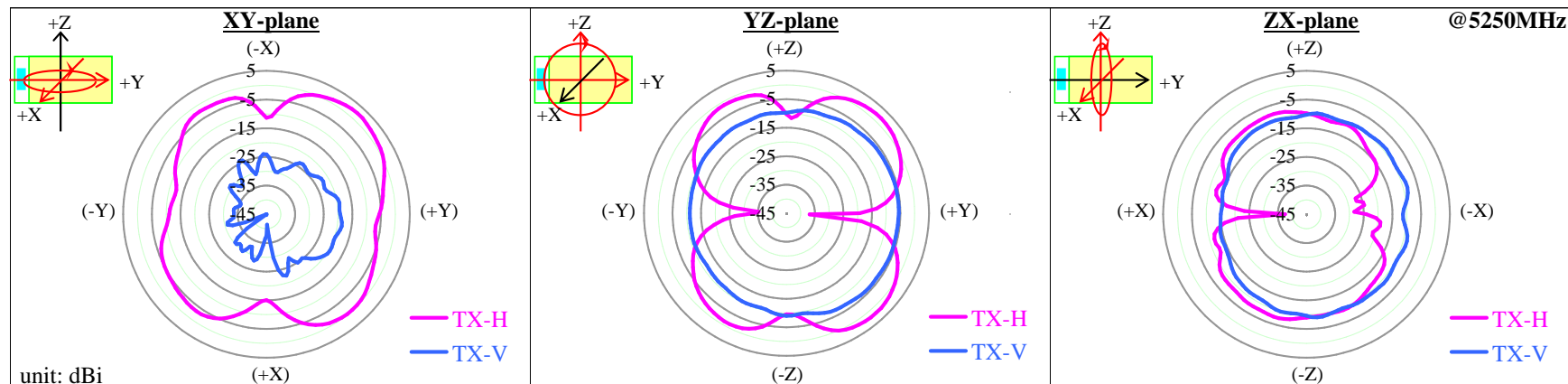
*Element-GND Distance : 1.5 mm

Electrical Characteristics

		4900MHz	5250MHz	5900MHz	
Efficiency [dB]		-2.0 (64%)	-1.6 (69%)	-2.0 (64%)	
Peak gain [dBi]		2.2	2.4	2.4	
Average gain [dBi]	XY-plane	TX-H	-3.2	-3.1	-3.2
		TX-V	-25.4	-24.6	-22.7
	YZ-plane	TX-H	-3.0	-2.6	-3.0
		TX-V	-7.7	-8.2	-8.8
	ZX-plane	TX-H	-10.9	-10.8	-12.3
		TX-V	-12.0	-10.6	-6.3



Radiation Pattern



The data is reference only. Electrical characteristics vary depending on environment or measurement condition.

TAIYO YUDEN reserves the right to make change to the Date at any time without notice.

Before making final selection, please check product specification