

**APPENDIX 3: Photographs of test setup**

**Conducted Emission**

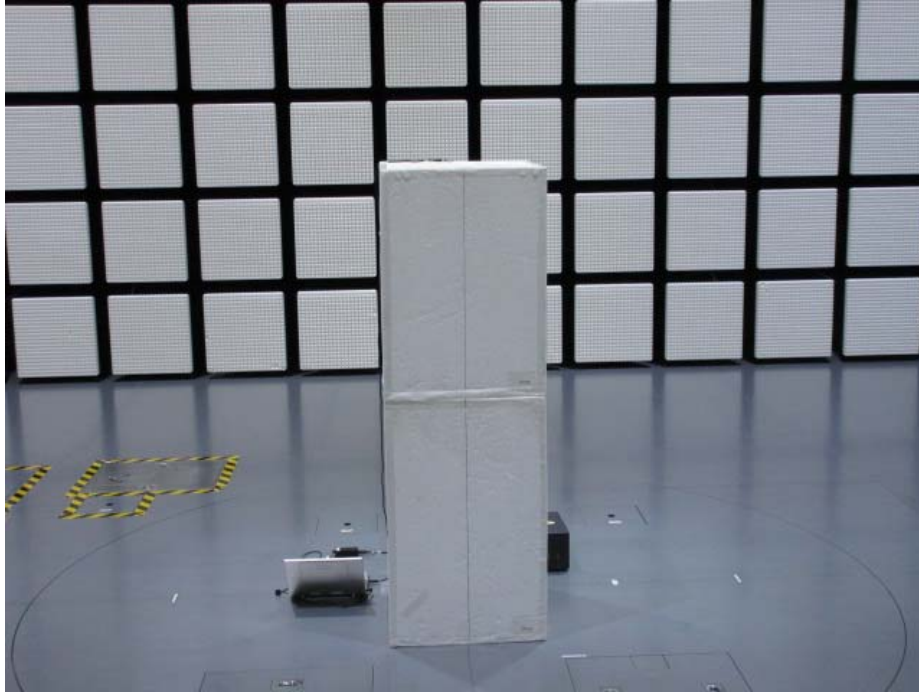


**Photo 1**

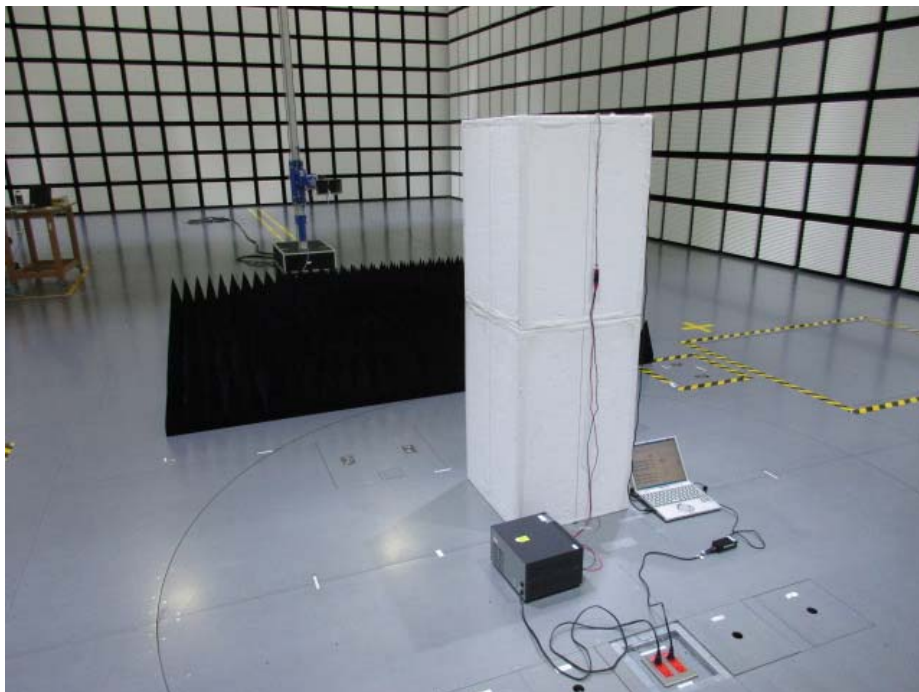


**Photo 2**

### Radiated Spurious Emission



**Photo 1**



**Photo 2**

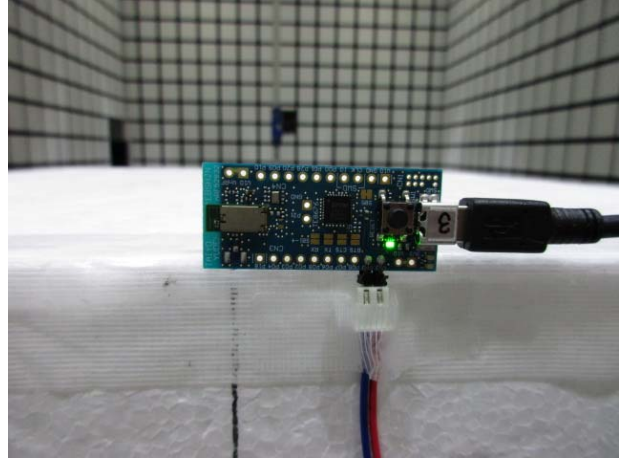
**Worst Case Position**

(Horizontal: X-axis / Vertical: Z-axis)

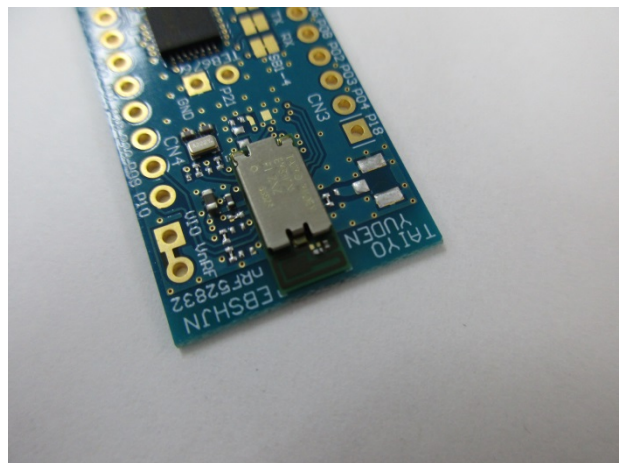
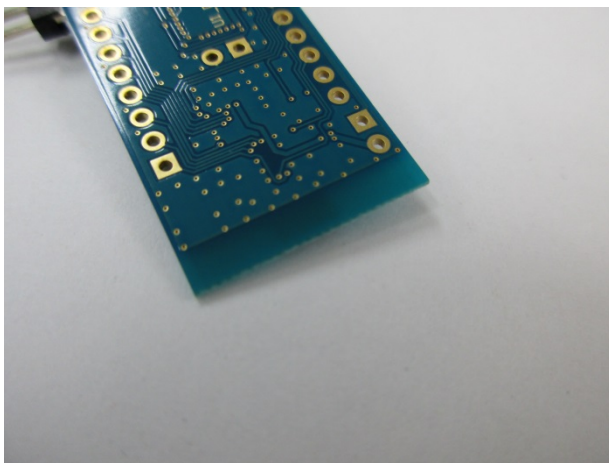
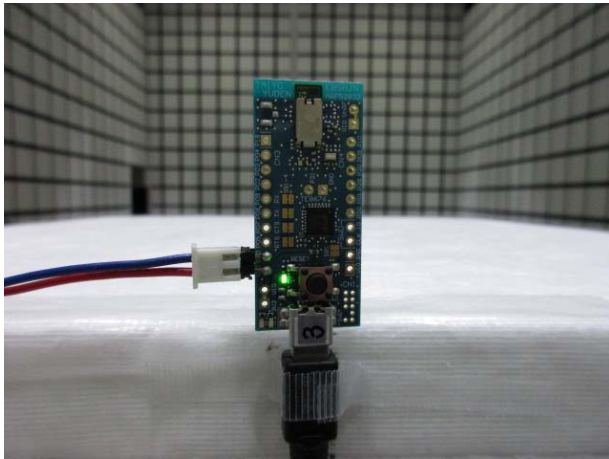
**X-axis**



**Y-axis**



**Z-axis**



\*Use the motherboard with no metal plate, therefore this motherboard does not affect the module test condition.

**End of Report**

**UL Japan, Inc.**

**Kashima EMC Lab.**

1614, Mushihata, Katori-shi, Chiba-ken, 289-0341 Japan

Telephone : +81 478 88 6500

Facsimile : +81 478 82 3373