

APPENDIX 3: Photographs of test setup

Conducted Emission



Photo 1



Photo 2

UL Japan, Inc.

Kashima EMC Lab.

1614, Mushihata, Katori-shi, Chiba-ken, 289-0341 Japan

Telephone : +81-478-88-6500

Facsimile : +81-478-82-3373

Radiated emission

Below 1 GHz

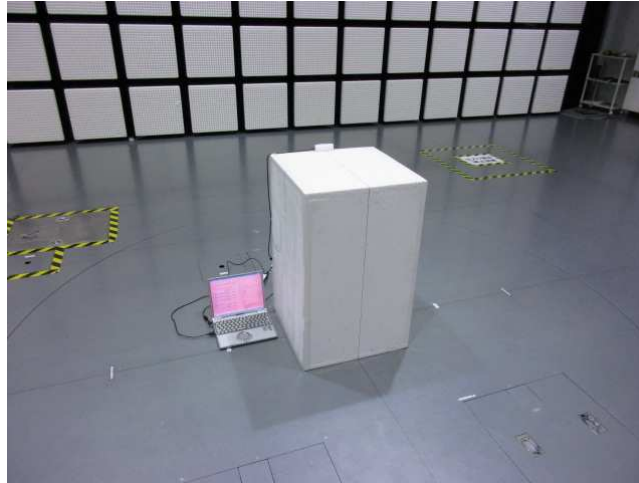


Photo 1

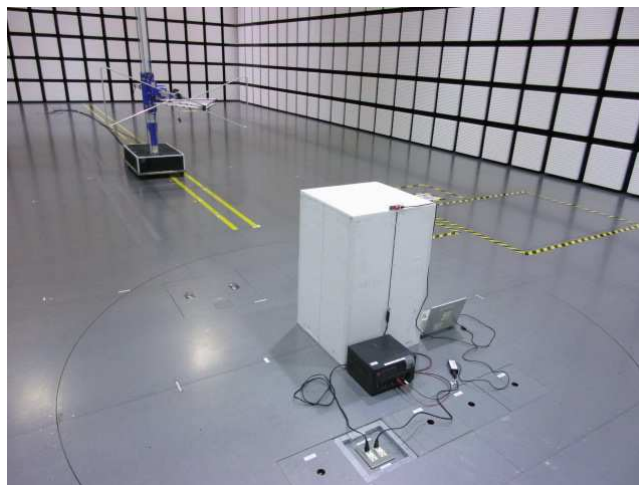


Photo 2

Radiated emission

Above 1 GHz



Photo 1

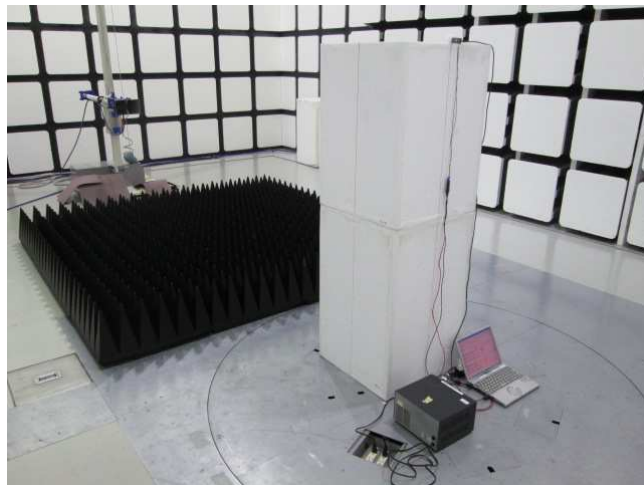
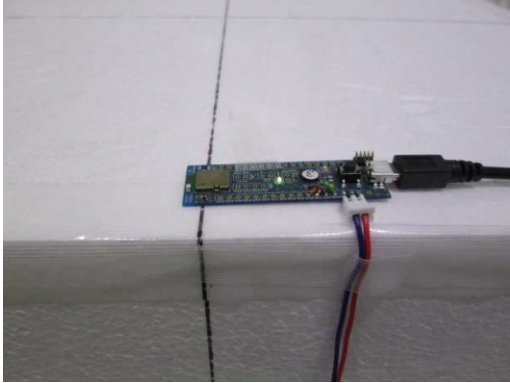


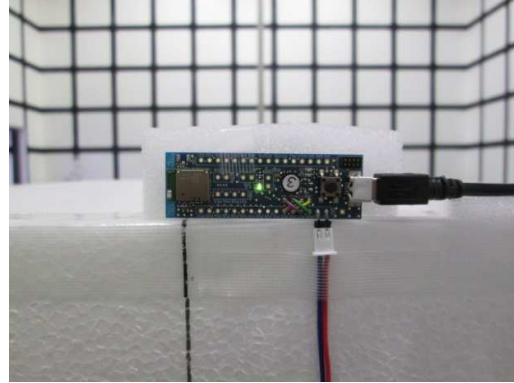
Photo 2

Worst Case Position

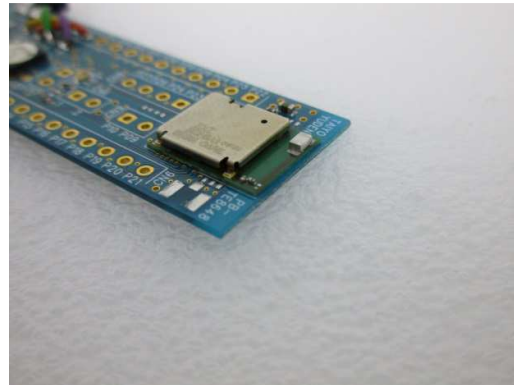
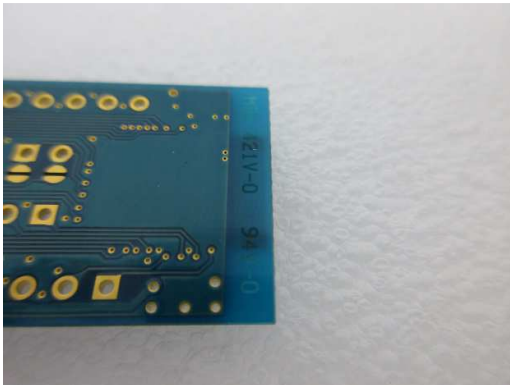
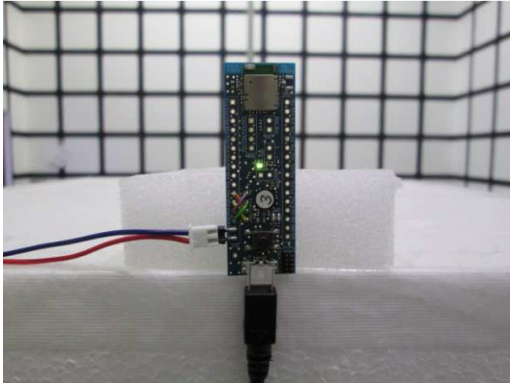
**(BT LE: Horizontal: Y-axis / Vertical: Y-axis) (ANT: Horizontal: Y-axis / Vertical: Z-axis)_
X-axis**



Y-axis



Z-axis



*Use the motherboard with no metal plate, therefore this motherboard does not affect the module test condition.

End of Report

UL Japan, Inc.

Kashima EMC Lab.

1614, Mushihata, Katori-shi, Chiba-ken, 289-0341 Japan

Telephone : +81-478-88-6500

Facsimile : +81-478-82-3373