

Model No.: WUBM-273ACN [M12W/W]



MAC: XXXXXXXXXXXXX



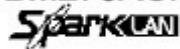
SN: XXXXXXXXXXXXX

A white rectangular label with a black border. It contains the model number "WUBM-273ACN [M12W/W]", a barcode, the MAC address "MAC: XXXXXXXXXXXXX", another barcode, and the serial number "SN: XXXXXXXXXXXXX".

S/N label



Front label

FCC ID: RYK-WUBM273ACN



FC

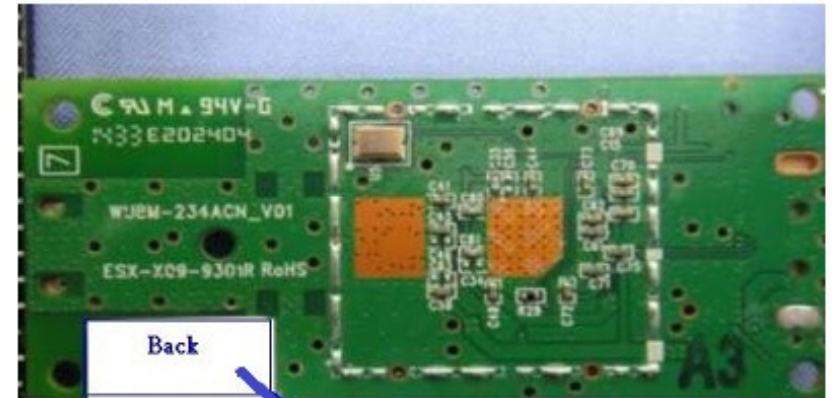
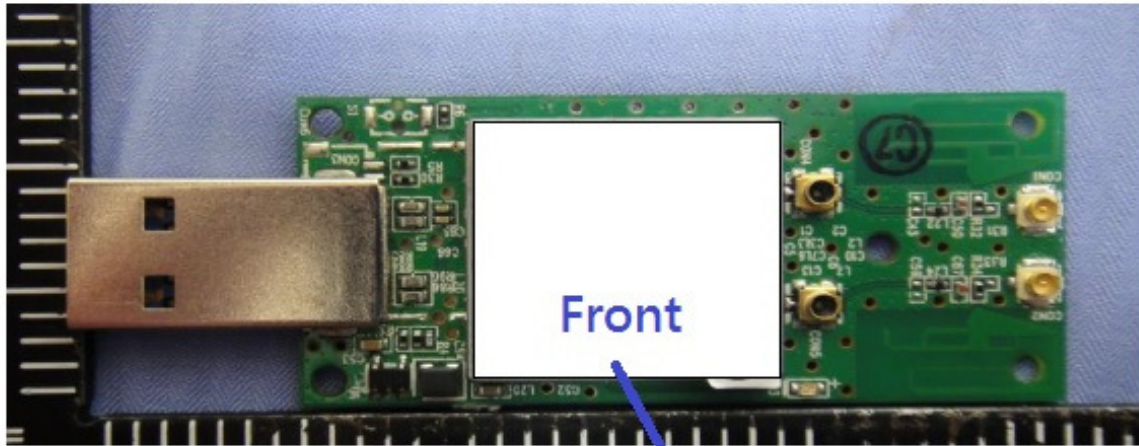
RoHS



CE

A white rectangular label with a black border. It contains the FCC ID "FCC ID: RYK-WUBM273ACN", the SparkCom logo, the FC mark, the RoHS mark, the CE mark, and the WEEE symbol.

Back label



Model No.: WUBM-273ACN [WU/W]

XXXXXXXXXXXXXX

XXXXXXXXXXXXXX

S/N label

Front label

FCC ID: RYK-WUBM273ACN

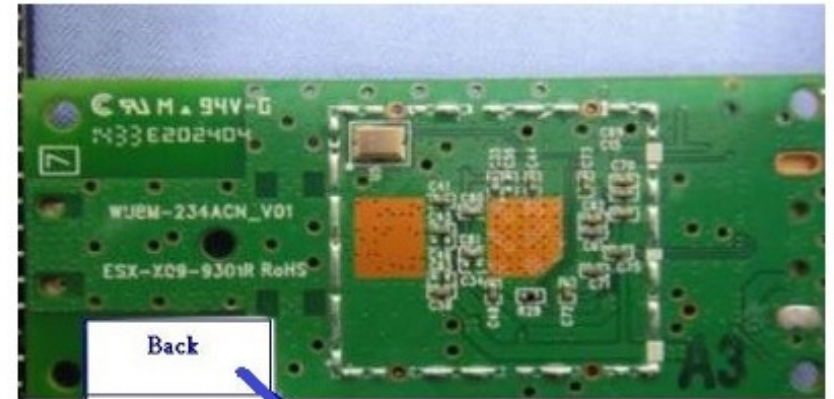
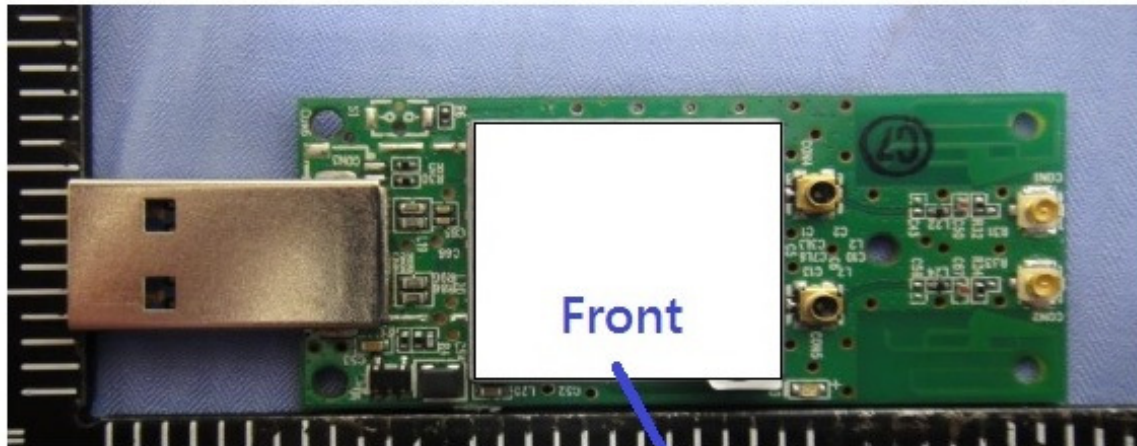
SparkLAN

FC

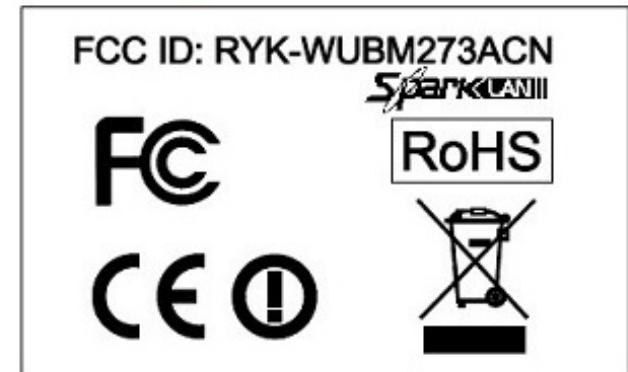
RoHS

CE

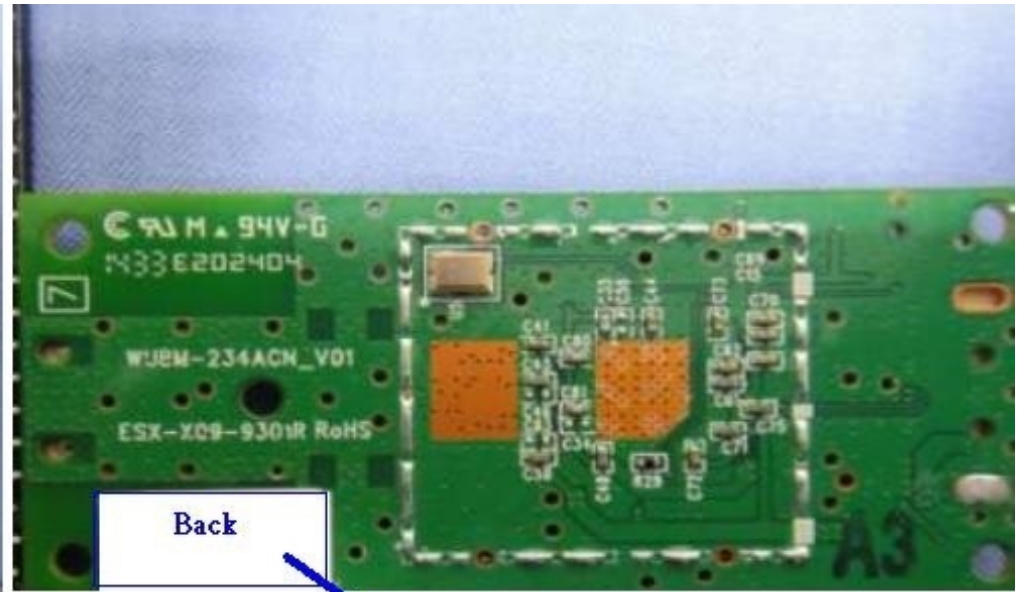
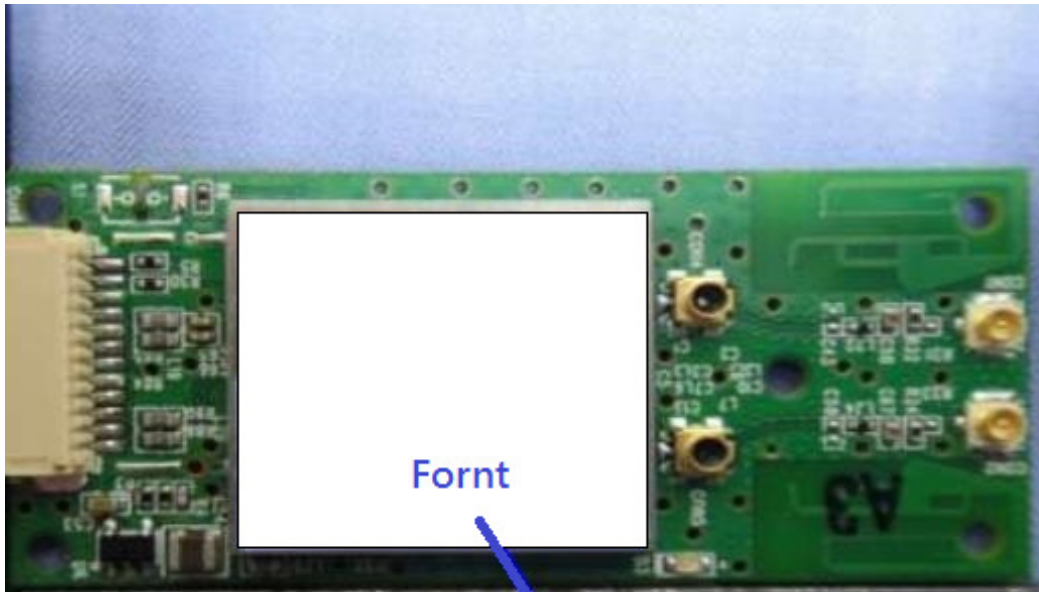
Back label



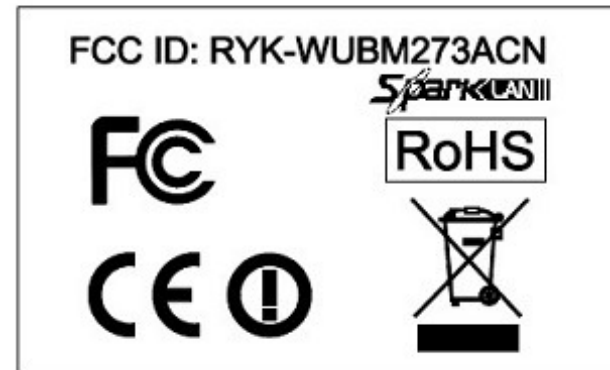
S/N label      Front label



Back label



S/N label      Front label



Back label