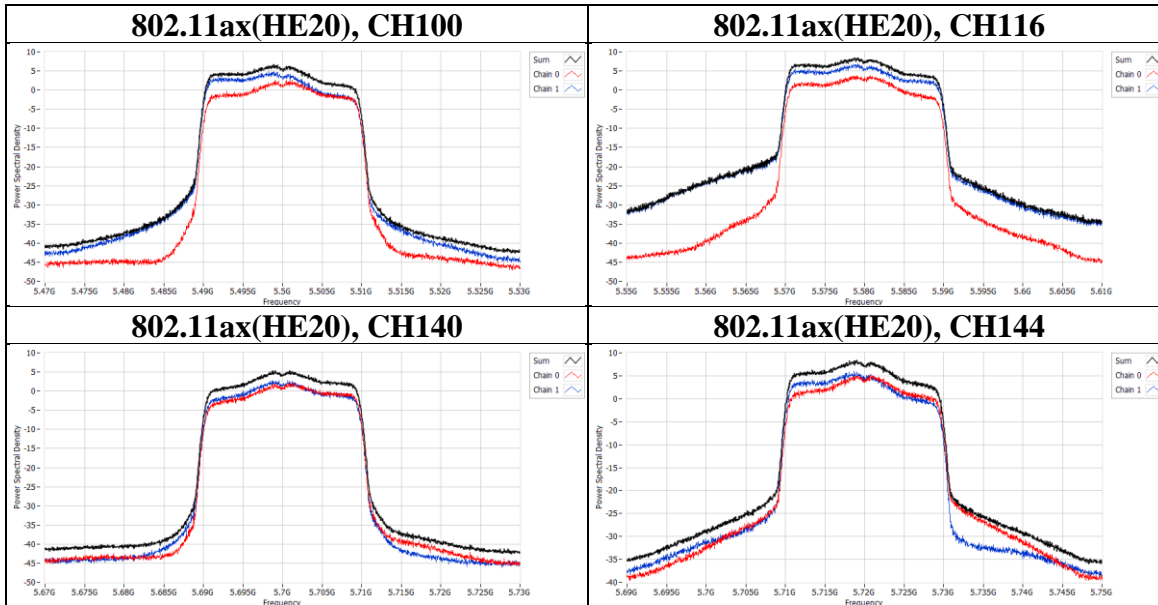




Mode (U-NII-2C)	CH	Freq (MHz)	Directional Gain (dBi)	Total PSD (dBm/MHz)	Limit (dBm/MHz)	Result
802.11ax(HE20)	100	5500	8.01	6.73	8.99	Pass
	116	5580	8.01	8.42	8.99	Pass
	140	5700	8.01	5.33	8.99	Pass
	144	5720	8.01	8.49	8.99	Pass

Mode (U-NII-2C)	CH	Freq (MHz)	PSD per Chain (dBm/MHz)	
			Chain 0	Chain 1
802.11ax(HE20)	100	5500	2.674	4.91
	116	5580	3.78	6.868
	140	5700	2.305	2.822
	144	5720	5.21	6.023



**Underwriters Laboratories Taiwan Co., Ltd.**

Building B and Building E, No. 372-7, Sec. 4, Zhongxing Rd., Zhudong Township, Hsinchu County, Taiwan

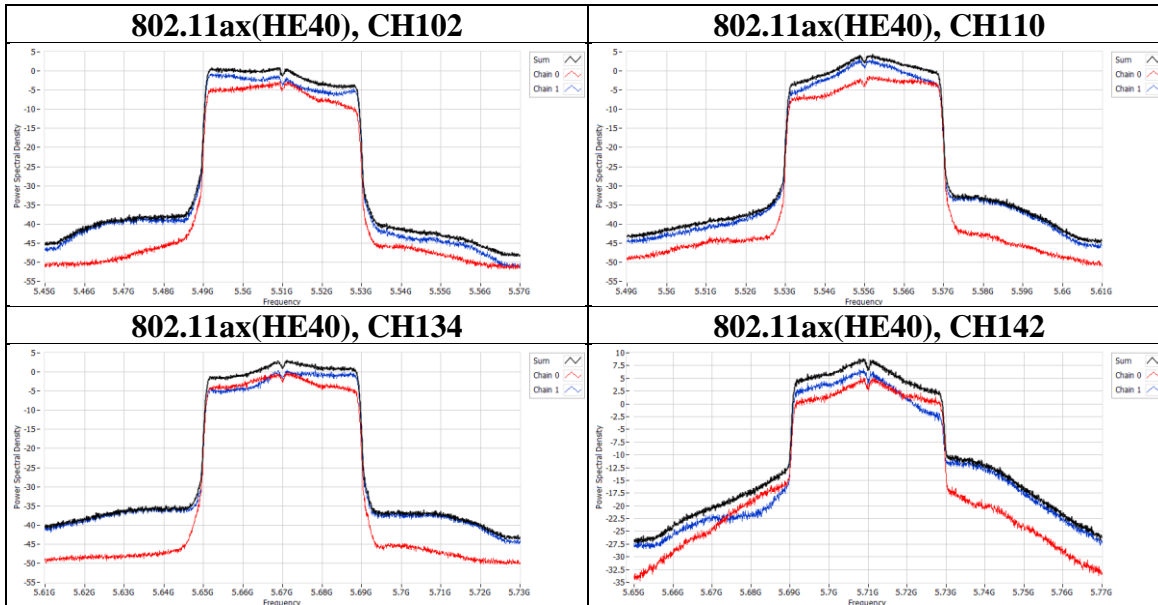
Telephone :+886-2-7737-3000

Facsimile (FAX) :+886-3-583-7948



Mode (U-NII-2C)	CH	Freq (MHz)	Directional Gain (dBi)	Total PSD (dBm/MHz)	Limit (dBm/MHz)	Result
802.11ax(HE40)	102	5510	8.01	0.94	8.99	Pass
	110	5550	8.01	4.27	8.99	Pass
	134	5670	8.01	3.16	8.99	Pass
	142	5710	8.01	8.85	8.99	Pass

Mode (U-NII-2C)	CH	Freq (MHz)	PSD per Chain (dBm/MHz)	
			Chain 0	Chain 1
802.11ax(HE40)	102	5510	-2.754	-0.355
	110	5550	-1.35	3.065
	134	5670	-0.127	0.585
	142	5710	5.298	6.842



**Underwriters Laboratories Taiwan Co., Ltd.**

Building B and Building E, No. 372-7, Sec. 4, Zhongxing Rd., Zhudong Township, Hsinchu County, Taiwan

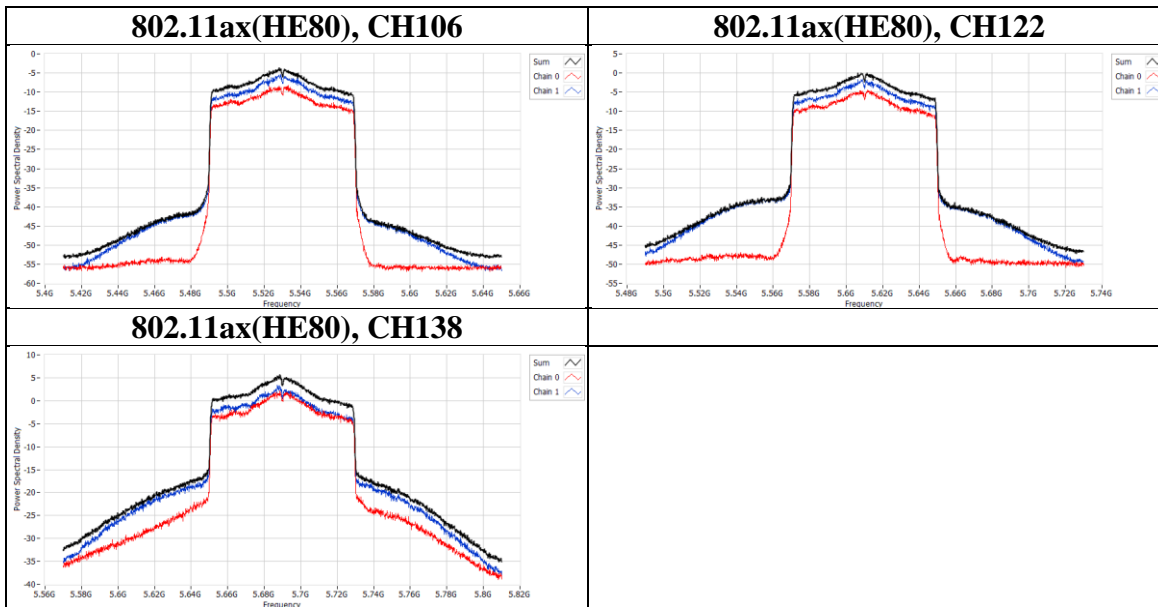
Telephone :+886-2-7737-3000

Facsimile (FAX) :+886-3-583-7948



Mode (U-NII-2C)	CH	Freq (MHz)	Directional Gain (dBi)	Total PSD (dBm/MHz)	Limit (dBm/MHz)	Result
802.11ax(HE80)	106	5530	8.01	-3.67	8.99	Pass
	122	5610	8.01	0.01	8.99	Pass
	138	5690	8.01	5.75	8.99	Pass

Mode (U-NII-2C)	CH	Freq (MHz)	PSD per Chain (dBm/MHz)	
			Chain 0	Chain 1
802.11ax(HE80)	106	5530	-8.183	-5.37
	122	5610	-4.526	-1.676
	138	5690	2.068	3.467



**Underwriters Laboratories Taiwan Co., Ltd.**

Building B and Building E, No. 372-7, Sec. 4, Zhongxing Rd., Zhudong Township, Hsinchu County, Taiwan

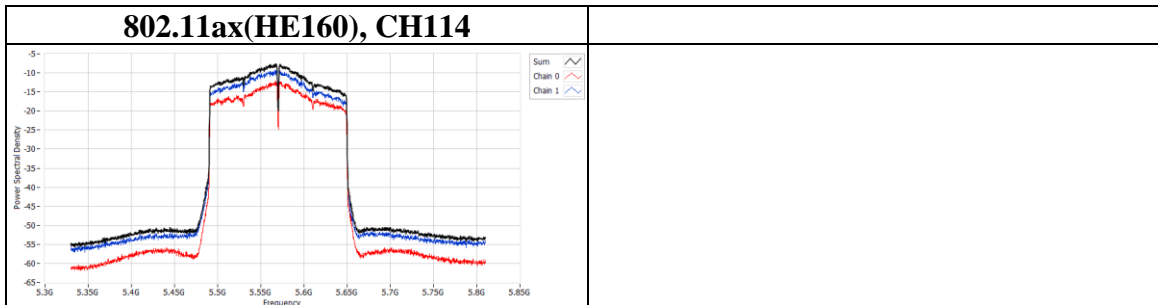
Telephone :+886-2-7737-3000

Facsimile (FAX ) :+886-3-583-7948



Mode (U-NII-2C)	CH	Freq (MHz)	Directional Gain (dBi)	Total PSD (dBm/MHz)	Limit (dBm/MHz)	Result
802.11ax(HE160)	114	5570	8.01	-7.57	8.99	Pass

Mode (U-NII-2C)	CH	Freq (MHz)	PSD per Chain (dBm/MHz)	
			Chain 0	Chain 1
802.11ax(HE160)	114	5570	-12.233	-9.323



**Underwriters Laboratories Taiwan Co., Ltd.**

Building B and Building E, No. 372-7, Sec. 4, Zhongxing Rd., Zhudong Township, Hsinchu County, Taiwan

Telephone : +886-2-7737-3000

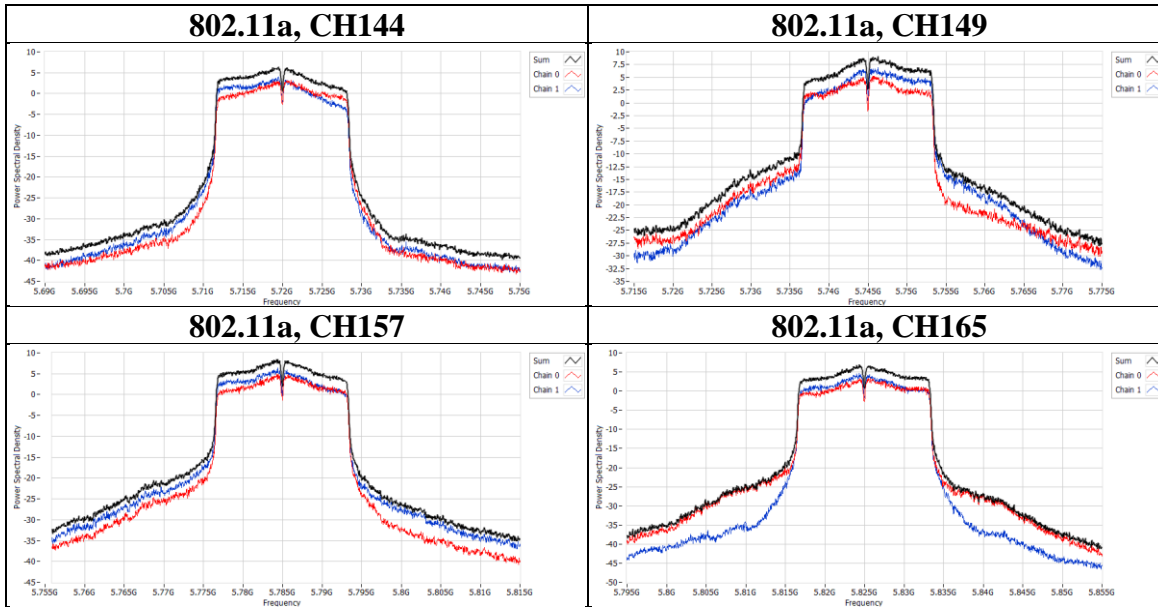
Facsimile (FAX) : +886-3-583-7948

Doc No: 17-EM-F0878 / 6.0



Mode (U-NII-3)	CH	Freq (MHz)	BWCF	Directional Gain (dBi)	Total PSD (dBm/MHz)	Limit (dBm/MHz)	Result
802.11a	144	5720	2.22	8.01	8.61	27.99	Pass
	149	5745	2.22	8.01	11.28	27.99	Pass
	157	5785	2.22	8.01	10.69	27.99	Pass
	165	5825	2.22	8.01	9.15	27.99	Pass

Mode (U-NII-3)	CH	Freq (MHz)	PSD per Chain (dBm/MHz)	
			Chain 0	Chain 1
802.11a	144	5720	3.149	3.945
	149	5745	5.291	6.877
	157	5785	5.014	6.449
	165	5825	3.432	4.708



**Underwriters Laboratories Taiwan Co., Ltd.**

Building B and Building E, No. 372-7, Sec. 4, Zhongxing Rd., Zhudong Township, Hsinchu County, Taiwan

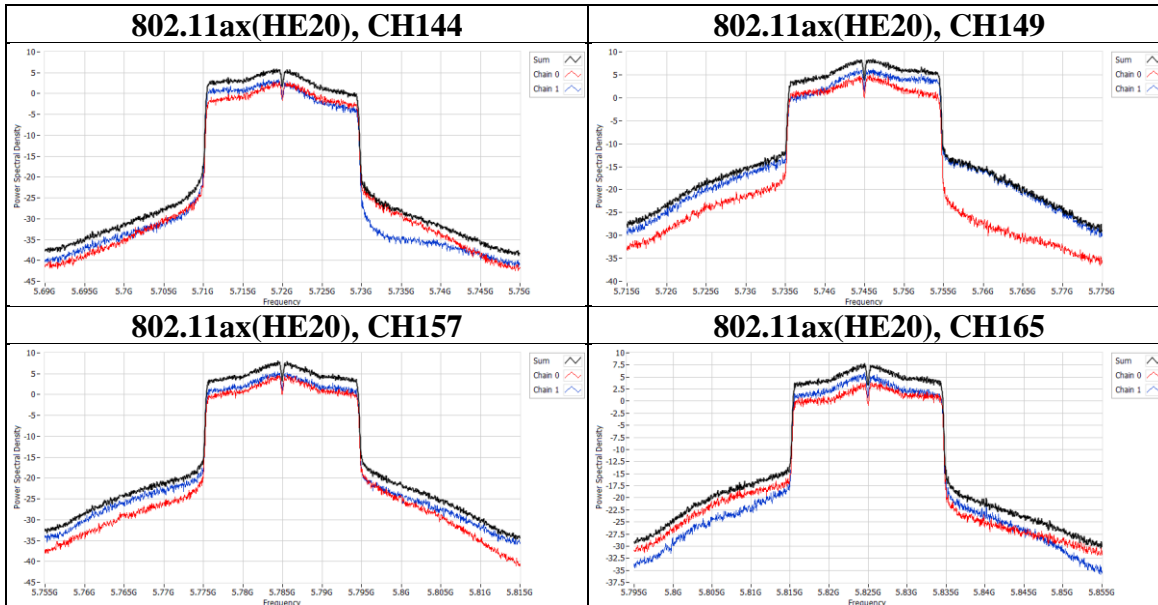
Telephone :+886-2-7737-3000

Facsimile (FAX ) :+886-3-583-7948



Mode (U-NII-3)	CH	Freq (MHz)	BWCF	Directional Gain (dBi)	Total PSD (dBm/MHz)	Limit (dBm/MHz)	Result
802.11ax(HE20)	144	5720	2.22	8.01	8.11	27.99	Pass
	149	5745	2.22	8.01	10.69	27.99	Pass
	157	5785	2.22	8.01	10.27	27.99	Pass
	165	5825	2.22	8.01	9.99	27.99	Pass

Mode (U-NII-3)	CH	Freq (MHz)	PSD per Chain (dBm/MHz)	
			Chain 0	Chain 1
802.11ax(HE20)	144	5720	2.866	3.46
	149	5745	5.277	6.388
	157	5785	4.71	5.395
	165	5825	3.858	5.866



**Underwriters Laboratories Taiwan Co., Ltd.**

Building B and Building E, No. 372-7, Sec. 4, Zhongxing Rd., Zhudong Township, Hsinchu County, Taiwan

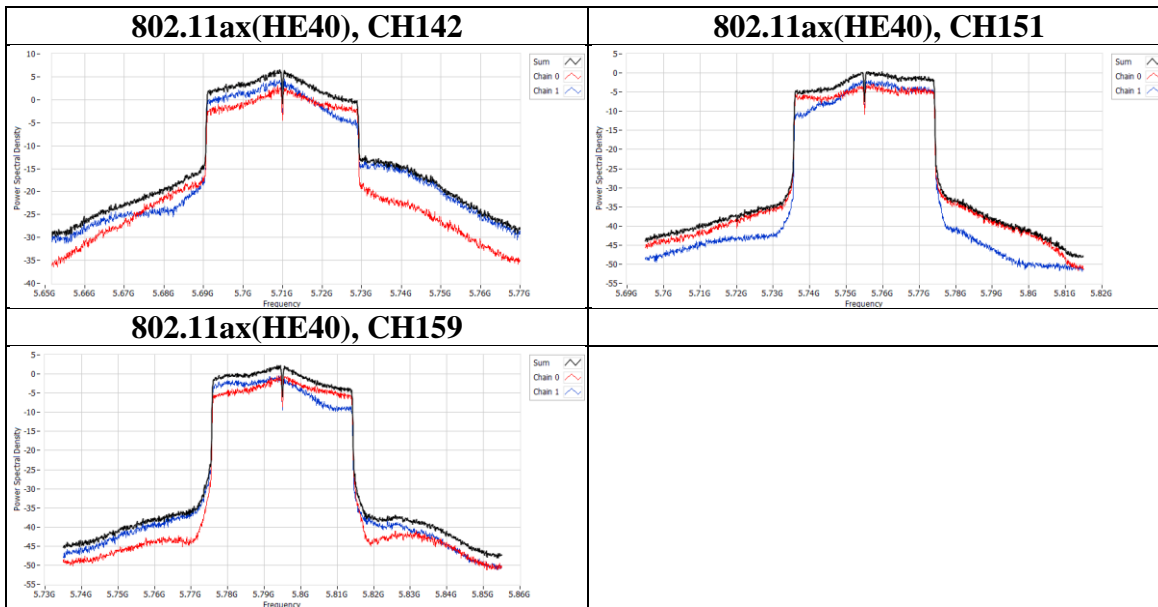
Telephone :+886-2-7737-3000

Facsimile (FAX ) :+886-3-583-7948



Mode (U-NII-3)	CH	Freq (MHz)	BWCF	Directional Gain (dBi)	Total PSD (dBm/MHz)	Limit (dBm/MHz)	Result
802.11ax(HE40)	142	5710	2.22	8.01	8.72	27.99	Pass
	151	5755	2.22	8.01	2.62	27.99	Pass
	159	5795	2.22	8.01	4.48	27.99	Pass

Mode (U-NII-3)	CH	Freq (MHz)	PSD per Chain (dBm/MHz)	
			Chain 0	Chain 1
802.11ax(HE40)	142	5710	3.15	4.5
	151	5755	-2.838	-1.909
	159	5795	-0.478	-0.466



**Underwriters Laboratories Taiwan Co., Ltd.**

Building B and Building E, No. 372-7, Sec. 4, Zhongxing Rd., Zhudong Township, Hsinchu County, Taiwan

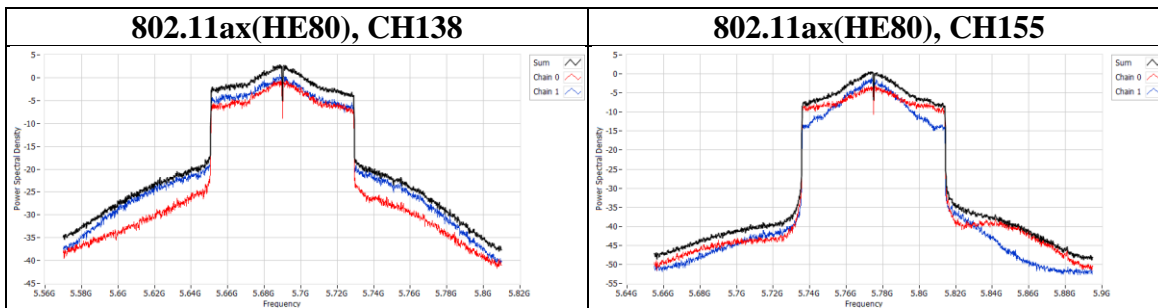
Telephone :+886-2-7737-3000

Facsimile (FAX ) :+886-3-583-7948



Mode (U-NII-3)	CH	Freq (MHz)	BWCF	Directional Gain (dBi)	Total PSD (dBm/MHz)	Limit (dBm/MHz)	Result
802.11ax(HE80)	138	5690	2.22	8.01	5.07	27.99	Pass
	155	5775	2.22	8.01	2.79	27.99	Pass

Mode (U-NII-3)	CH	Freq (MHz)	PSD per Chain (dBm/MHz)	
			Chain 0	Chain 1
802.11ax(HE80)	138	5690	-0.592	0.761
	155	5775	-3.06	-1.062



**Underwriters Laboratories Taiwan Co., Ltd.**

Building B and Building E, No. 372-7, Sec. 4, Zhongxing Rd., Zhudong Township, Hsinchu County, Taiwan

Telephone :+886-2-7737-3000

Facsimile (FAX ) :+886-3-583-7948



## 9.6. Frequency Stability

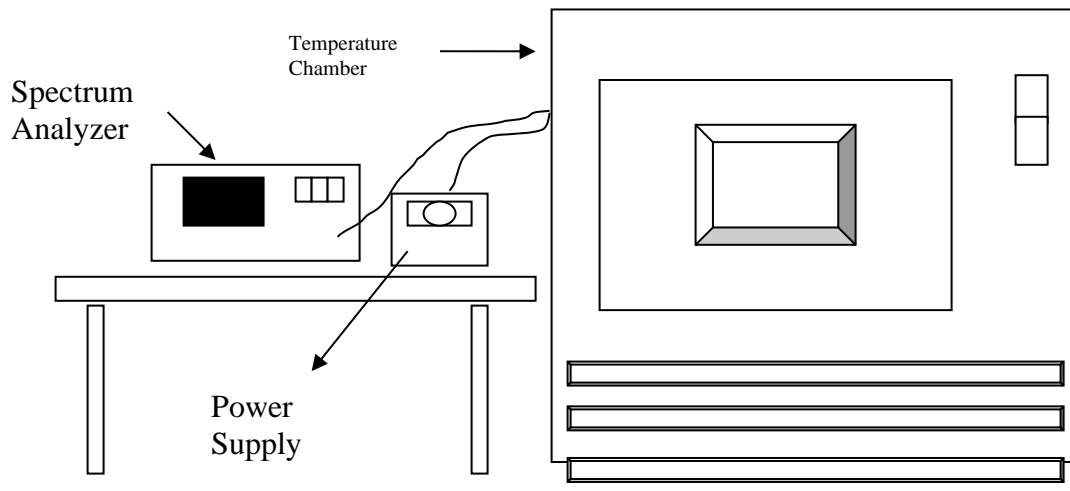
### Requirements

The frequency of the carrier signal shall be maintained within band of operation.

### Test procedure

- The EUT was placed inside the environmental test chamber and powered by nominal voltage.
- Turn the EUT on and couple its output to a spectrum analyzer.
- Turn the EUT off and set the chamber to the highest temperature specified.
- Allow sufficient time (approximately 30 min) for the temperature of the chamber to stabilize, turn the EUT on and measure the operating frequency after 2, 5, and 10 Minutes.
- Repeat step 2 and 3 with the temperature chamber set to the lowest temperature.
- The test chamber was allowed to stabilize at +20 degree C for a minimum of 30 Minutes. The supply voltage was then adjusted on the EUT from 85% to 115% and the frequency record.

### Test Setup





**Test Data**

Frequency Stability Versus Temp.									
Operating Frequency: 5180 MHz									
TEMP. (°C)	Power Supply (Vdc)	0 Minute		2 Minute		5 Minute		10 Minute	
		Measured Frequency (MHz)	Freq. Drift (ppm)	Measured Frequency (MHz)	Freq. Drift (ppm)	Measured Frequency (MHz)	Freq. Drift (ppm)	Measured Frequency (MHz)	Freq. Drift (ppm)
75	3.3	5180.0204	3.94	5180.0193	3.73	5180.0213	4.11	5180.019	3.67
70	3.3	5180.006	1.16	5180.0057	1.10	5180.0074	1.43	5180.0061	1.18
60	3.3	5180.0009	0.17	5179.9978	-0.42	5180.0021	0.41	5180.0007	0.14
50	3.3	5179.9901	-1.91	5179.9893	-2.07	5179.9897	-1.99	5179.9931	-1.33
40	3.3	5179.9836	-3.17	5179.9841	-3.07	5179.9859	-2.72	5179.9852	-2.86
30	3.3	5179.9949	-0.98	5179.9908	-1.78	5179.991	-1.74	5179.9911	-1.72
20	3.3	5179.9804	-3.78	5179.9785	-4.15	5179.9799	-3.88	5179.981	-3.67
10	3.3	5180.0066	1.27	5180.0019	0.37	5180.0061	1.18	5180.0065	1.25
0	3.3	5179.979	-4.05	5179.9806	-3.75	5179.9801	-3.84	5179.9785	-4.15
-10	3.3	5179.9836	-3.17	5179.9824	-3.40	5179.9822	-3.44	5179.98	-3.86
-20	3.3	5179.9972	-0.54	5179.997	-0.58	5179.9969	-0.60	5179.9965	-0.68
-30	3.3	5180.021	4.05	5180.0205	3.96	5180.0191	3.69	5180.0199	3.84
-40	3.3	5180.0134	2.59	5180.015	2.90	5180.0153	2.95	5180.0137	2.64
TEMP. (°C)	Power Supply (Vac)	0 Minute		2 Minute		5 Minute		10 Minute	
		Measured Frequency (MHz)	Freq. Drift (ppm)	Measured Frequency (MHz)	Freq. Drift (ppm)	Measured Frequency (MHz)	Freq. Drift (ppm)	Measured Frequency (MHz)	Freq. Drift (ppm)
20	3.8	5179.9808	-3.71	5179.9775	-4.34	5179.9806	-3.75	5179.9811	-3.65
	3.3	5179.9804	-3.78	5179.9785	-4.15	5179.9799	-3.88	5179.981	-3.67
	2.8	5179.9802	-3.82	5179.9791	-4.03	5179.9792	-4.02	5179.9803	-3.80

**Underwriters Laboratories Taiwan Co., Ltd.**

Building B and Building E, No. 372-7, Sec. 4, Zhongxing Rd., Zhudong Township, Hsinchu County, Taiwan

Telephone :+886-2-7737-3000

Facsimile (FAX ) :+886-3-583-7948

Doc No: 17-EM-F0878 / 6.0



## 9.7. Radiated Spurious Emission

### Requirements

Radiated emissions which fall in the restricted bands must comply with the radiated emission limits specified as below table.

Frequency(MHz)	Field strength (microvolts/meter)	Measurement distance (meters)
0.009-0.490	2400/F(kHz)	300
0.490-1.705	24000/F(kHz)	30
1.705-30.0	30	30
30-88	100	3
88-216	150	3
216-960	200	3
Above 960	500	3

**NOTE:**

1. The lower limit shall apply at the transition frequencies.
2. Emission level (dBuV/m) = 20 log Emission level (uV/m).
3. For frequencies above 1000MHz, the field strength limits are based on average detector, however, the peak field strength of any emission shall not exceed the maximum permitted average limits, specified above by more than 20dB under any condition of modulation.

### **Underwriters Laboratories Taiwan Co., Ltd.**

Building B and Building E, No. 372-7, Sec. 4, Zhongxing Rd., Zhudong Township, Hsinchu County, Taiwan

Telephone :+886-2-7737-3000

Facsimile (FAX ) :+886-3-583-7948

Doc No: 17-EM-F0878 / 6.0



Limits of unwanted emission out of the restricted bands

Applicable To		Limit	
789033 D02 General UNII Test Procedure New Rules v02r01		Field Strength at 3m	
		PK:74 (dBμV/m)	AV:54 (dBμV/m)
Frequency Band	Applicable To	EIRP Limit	Equivalent Field Strength at 3m
5150~5250 MHz	15.407(b)(1)	PK:-27 (dBm/MHz)	PK:68.2(dBμV/m)
5250~5350 MHz	15.407(b)(2)		
5470~5725 MHz	15.407(b)(3)		
5725~5850 MHz	15.407(b)(4)(i)	PK:-27 (dBm/MHz) *1 PK:10 (dBm/MHz) *2 PK:15.6 (dBm/MHz) *3 PK:27 (dBm/MHz) *4	PK: 68.2(dBμV/m) *1 PK:105.2 (dBμV/m) *2 PK: 110.8(dBμV/m) *3 PK:122.2 (dBμV/m) *4
*1 beyond 75 MHz or more above of the band edge. *2 below the band edge increasing linearly to 10 dBm/MHz at 25 MHz above. *3 below the band edge increasing linearly to a level of 15.6 dBm/MHz at 5 MHz above. *4 from 5 MHz above or below the band edge increasing linearly to a level of 27 dBm/MHz at the band edge.			

**Note:**

The following formula is used to convert the effective isotropic radiated power (eirp) to field strength:

$$E = \frac{1000000\sqrt{30P}}{3} \mu\text{V/m, where P is the eirp (Watts).}$$

**Underwriters Laboratories Taiwan Co., Ltd.**

Building B and Building E, No. 372-7, Sec. 4, Zhongxing Rd., Zhudong Township, Hsinchu County, Taiwan

Telephone :+886-2-7737-3000

Facsimile (FAX ) :+886-3-583-7948



## **Test Procedures**

[For 9 kHz ~ 30 MHz]

- a. The EUT was placed on the top of a rotating table 0.8 meters above the ground at a 3 meter chamber room. The table was rotated 360 degrees to determine the position of the highest radiation.
- b. The EUT was set 3 meters away from the interference-receiving antenna, which was mounted on the top of a variable-height antenna tower.
- c. Parallel, perpendicular, and ground-parallel orientations of the antenna are set to make the measurement.
- d. For each suspected emission, the EUT was arranged to its worst case and the rotatable table was turned from 0 degrees to 360 degrees to find the maximum reading.
- e. For measurement below 30MHz, the initial step in collecting conducted emission data is a spectrum analyzer peak detector mode pre-scanning the measurement frequency range. Significant peaks are then marked and then Quasi Peak detector mode re-measured. If the emission level of the EUT measured by the peak detector is lower than the applicable limit, the peak emission level will be reported. Otherwise, the emission measurement will be repeated using the quasi-peak detector and reported.

NOTE:

1. The resolution bandwidth and video bandwidth of test receiver/spectrum analyzer is 9kHz at frequency below 30MHz.

[For above 30 MHz]

- a. The EUT was placed on the top of a rotating table 0.8 meters (for 30MHz ~ 1GHz) / 1.5 meters (for above 1GHz) above the ground at 3 meter chamber room for test. The table was rotated 360 degrees to determine the position of the highest radiation.
- b. The EUT was set 3 meters away from the interference-receiving antenna, which was mounted on the top of a variable-height antenna tower.
- c. The height of antenna is varied from one meter to four meters above the ground to determine the maximum value of the field strength. Both horizontal and vertical polarizations of the antenna are set to make the measurement.
- d. For each suspected emission, the EUT was arranged to its worst case and then the antenna was tuned to heights from 1 meter to 4 meters and the rotatable table was turned from 0 degrees to 360 degrees to find the maximum reading.
- e. For measurement below 1GHz, the initial step in collecting conducted emission data is a spectrum analyzer peak detector mode pre-scanning the measurement frequency range. Significant peaks are then marked and then Quasi Peak detector mode re-measured. If the emission level of the EUT measured by the peak detector is lower than the applicable limit, the peak emission level will be reported. Otherwise, the emission measurement will be repeated using the quasi-peak detector and reported.
- f. The test-receiver system was set to peak and average detects function and specified bandwidth with maximum hold mode when the test frequency is above 1 GHz. If the peak reading value also meets average limit, measurement with the average detector is unnecessary.

### **Underwriters Laboratories Taiwan Co., Ltd.**

Building B and Building E, No. 372-7, Sec. 4, Zhongxing Rd., Zhudong Township, Hsinchu County, Taiwan

Telephone :+886-2-7737-3000

Facsimile (FAX ) :+886-3-583-7948

Doc No: 17-EM-F0878 / 6.0



Note:

- a. The resolution bandwidth and video bandwidth of test receiver/spectrum analyzer is 120kHz for Quasi-peak detection (QP) at frequency below 1GHz.
- b. The resolution bandwidth of test receiver/spectrum analyzer is 1 MHz and the video bandwidth is 3 MHz for Peak detection (PK) at frequency above 1GHz.
- c. The resolution bandwidth of test receiver/spectrum analyzer is 1MHz and the video bandwidth is  $\geq 1/T$  (Duty cycle < 98%) or 10Hz (Duty cycle  $\geq 98\%$ ) for Average detection (AV) at frequency above 1GHz.

Configuration	Average	
	RBW	VBW
802.11a	1MHz	Refer to section 6.6 for duty cycle
802.11ax (HE20)		
802.11ax (HE40)		
802.11ax (HE80)		
802.11ax (HE160)		

- d. All modes of operation were investigated (includes all external accessories) and the worst-case emissions are reported, the other emission levels were low against the limit.
- e. Test data of Result value (dBuV/m) = Reading value (dBuV/m) + Correction Factor (dB/m).
- f. Test data of Margin(dB) = Result value (dBuV/m) - Limit value (dBuV/m).
- g. Test data of Correction Factor (dB/m) = Antenna Factor (dBuV/m) + Cable Loss (dB) - Preamp Factor (dB).
- h. Test data of Notation "@" = Fundamental Frequency
- i. Test data of Notation "\*" = Only required peak limit or the peak result under 20 dB above and complies with AVG limit, AVG result is deemed to comply with AVG limit.

**Underwriters Laboratories Taiwan Co., Ltd.**

Building B and Building E, No. 372-7, Sec. 4, Zhongxing Rd., Zhudong Township, Hsinchu County, Taiwan

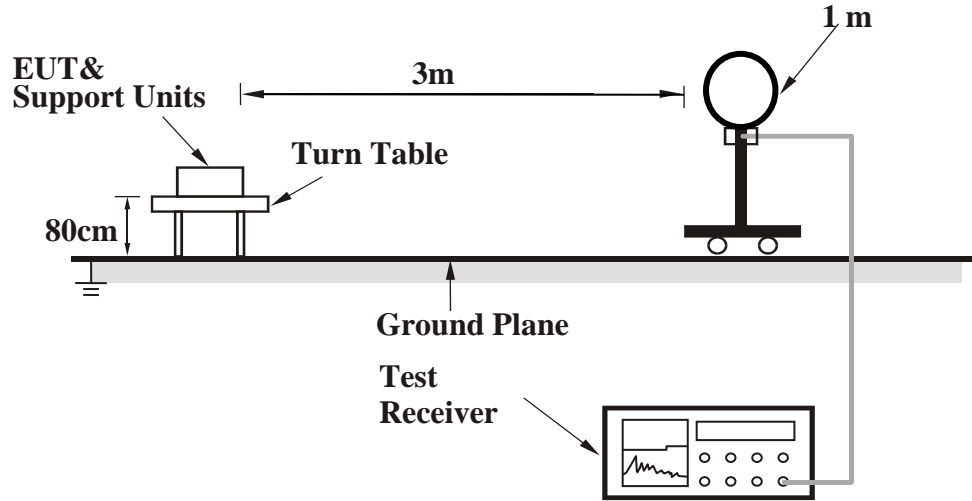
Telephone :+886-2-7737-3000

Facsimile (FAX ) :+886-3-583-7948

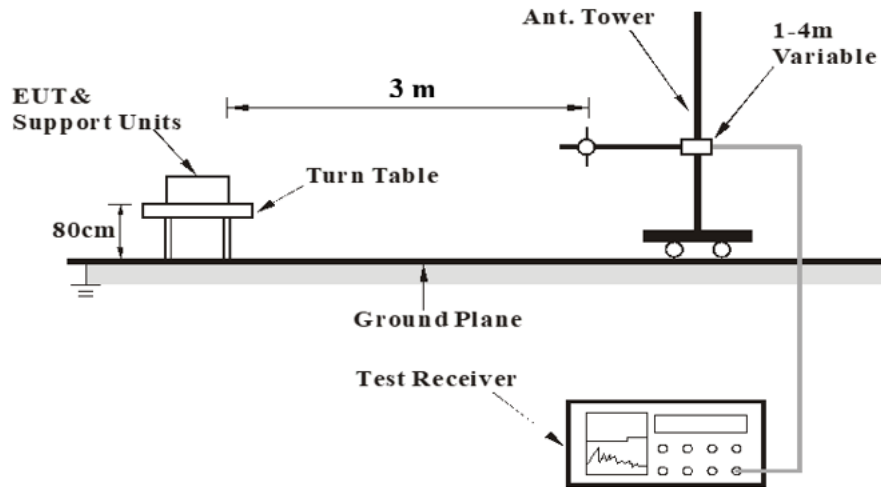


### Test Setup

<Frequency Range 9 kHz ~ 30 MHz>



<Frequency Range 30 MHz ~ 1 GHz >



### **Underwriters Laboratories Taiwan Co., Ltd.**

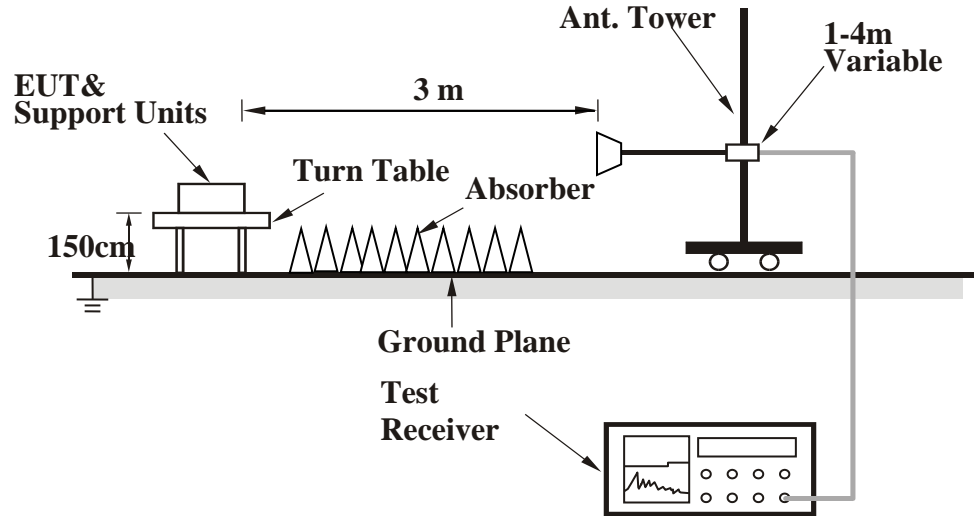
Building B and Building E, No. 372-7, Sec. 4, Zhongxing Rd., Zhudong Township, Hsinchu County, Taiwan

Telephone : +886-2-7737-3000

Facsimile (FAX) : +886-3-583-7948



<Frequency Range above 1 GHz>



For the actual test configuration, please refer to the Setup Configurations.





## Test Data

### **Above 1 GHz**

Mode	802.11a	Channel	36
------	---------	---------	----

Polarization	Notation	Frequency	Reading	Correct	Result	Limit	Margin	Remark
		(MHz)	(dBuV)	(dB/m)	(dBuV/m)	(dBuV/m)	(dB)	
Horizontal		5144.55	42	13.4	55.4	74	-18.6	PK
		5148.4	30.58	13.4	43.98	54	-10.02	AVG
	@	5180	85.05	13.31	98.36	N/A	N/A	PK
	@	5180	79.95	13.31	93.26	N/A	N/A	AVG
	*	10360	30.59	17.51	48.1	68.2	-20.1	PK
Vertical		5145.6	47.39	13.4	60.79	74	-13.21	PK
		5149.8	36.35	13.4	49.75	54	-4.25	AVG
	@	5180	100.04	13.31	113.35	N/A	N/A	PK
	@	5180	92.75	13.31	106.06	N/A	N/A	AVG
	*	10360	32.42	17.51	49.93	68.2	-18.27	PK

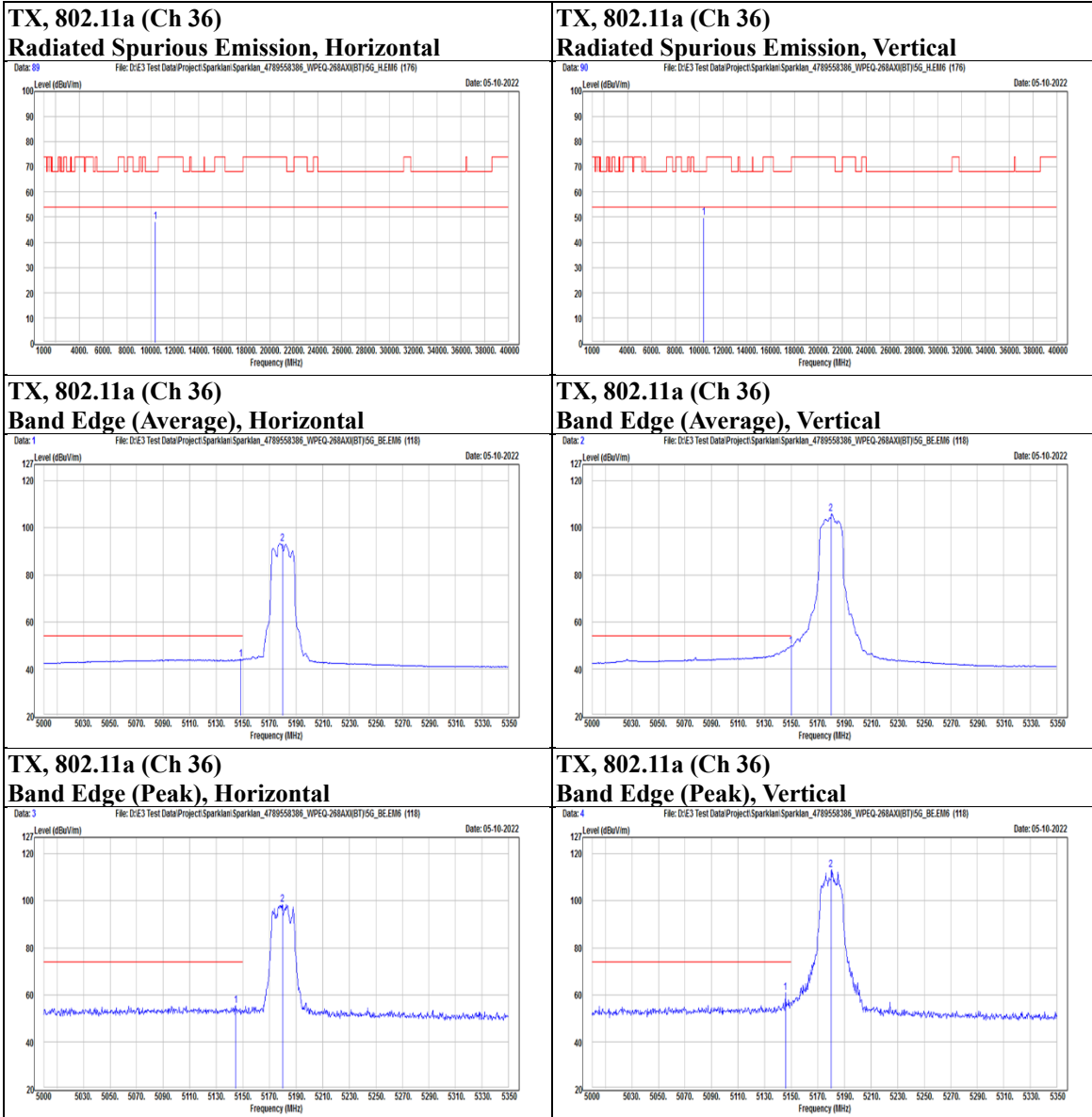
### **Underwriters Laboratories Taiwan Co., Ltd.**

Building B and Building E, No. 372-7, Sec. 4, Zhongxing Rd., Zhudong Township, Hsinchu County, Taiwan

Telephone :+886-2-7737-3000

Facsimile (FAX ) :+886-3-583-7948

Doc No: 17-EM-F0878 / 6.0





Mode	802.11a	Channel	44
------	---------	---------	----

Polarization	Notation	Frequency	Reading	Correct	Result	Limit	Margin	Remark
		(MHz)	(dBuV)	(dB/m)	(dBuV/m)	(dBuV/m)	(dB)	
Horizontal		5095.55	30.39	13.41	43.8	54	-10.2	AVG
		5123.2	42.15	13.42	55.57	74	-18.43	PK
	@	5220	90.12	13.12	103.24	N/A	N/A	PK
	@	5220	82.98	13.12	96.1	N/A	N/A	AVG
	*	10440	32.77	17.81	50.58	68.2	-17.62	PK
Vertical		5059.5	42.77	13.15	55.92	74	-18.08	PK
		5147.35	32.16	13.41	45.57	54	-8.43	AVG
	@	5220	101.93	13.12	115.05	N/A	N/A	PK
	@	5220	95.01	13.12	108.13	N/A	N/A	AVG
	*	10440	34.06	17.81	51.87	68.2	-16.33	PK

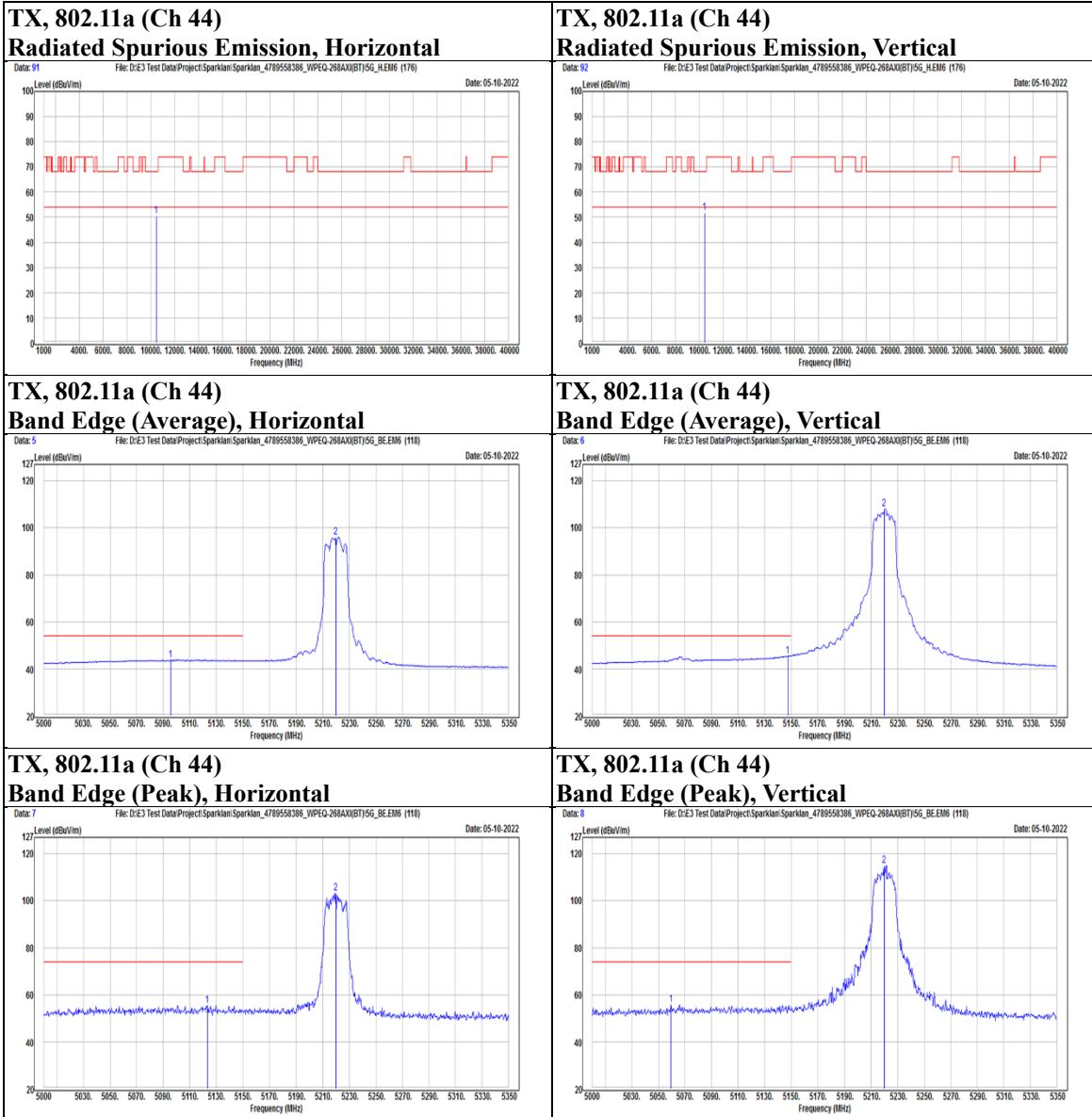
**Underwriters Laboratories Taiwan Co., Ltd.**

Building B and Building E, No. 372-7, Sec. 4, Zhongxing Rd., Zhudong Township, Hsinchu County, Taiwan

Telephone :+886-2-7737-3000

Facsimile (FAX ) :+886-3-583-7948

Doc No: 17-EM-F0878 / 6.0





Test report No. : 4790371368-US-R1-V0  
Page : 118 of 206  
Issued date : 2022/11/9  
FCC ID : RYK-WPEQ268AXB

Mode	802.11a	Channel	48
------	---------	---------	----

Polarization	Notation	Frequency	Reading	Correct	Result	Limit	Margin	Remark
		(MHz)	(dBuV)	(dB/m)	(dBuV/m)	(dBuV/m)	(dB)	
Horizontal		5089.25	42.16	13.38	55.54	74	-18.46	PK
		5107.1	30.31	13.44	43.75	54	-10.25	AVG
	@	5240	89.38	12.97	102.35	N/A	N/A	PK
	@	5240	82.83	12.97	95.8	N/A	N/A	AVG
	*	10480	31.77	17.92	49.69	68.2	-18.51	PK
Vertical		5086.8	32.1	13.35	45.45	54	-8.55	AVG
		5101.15	42.08	13.44	55.52	74	-18.48	PK
	@	5240	100.76	12.97	113.73	N/A	N/A	PK
	@	5240	94.92	12.97	107.89	N/A	N/A	AVG
	*	10480	31.82	17.92	49.74	68.2	-18.46	PK

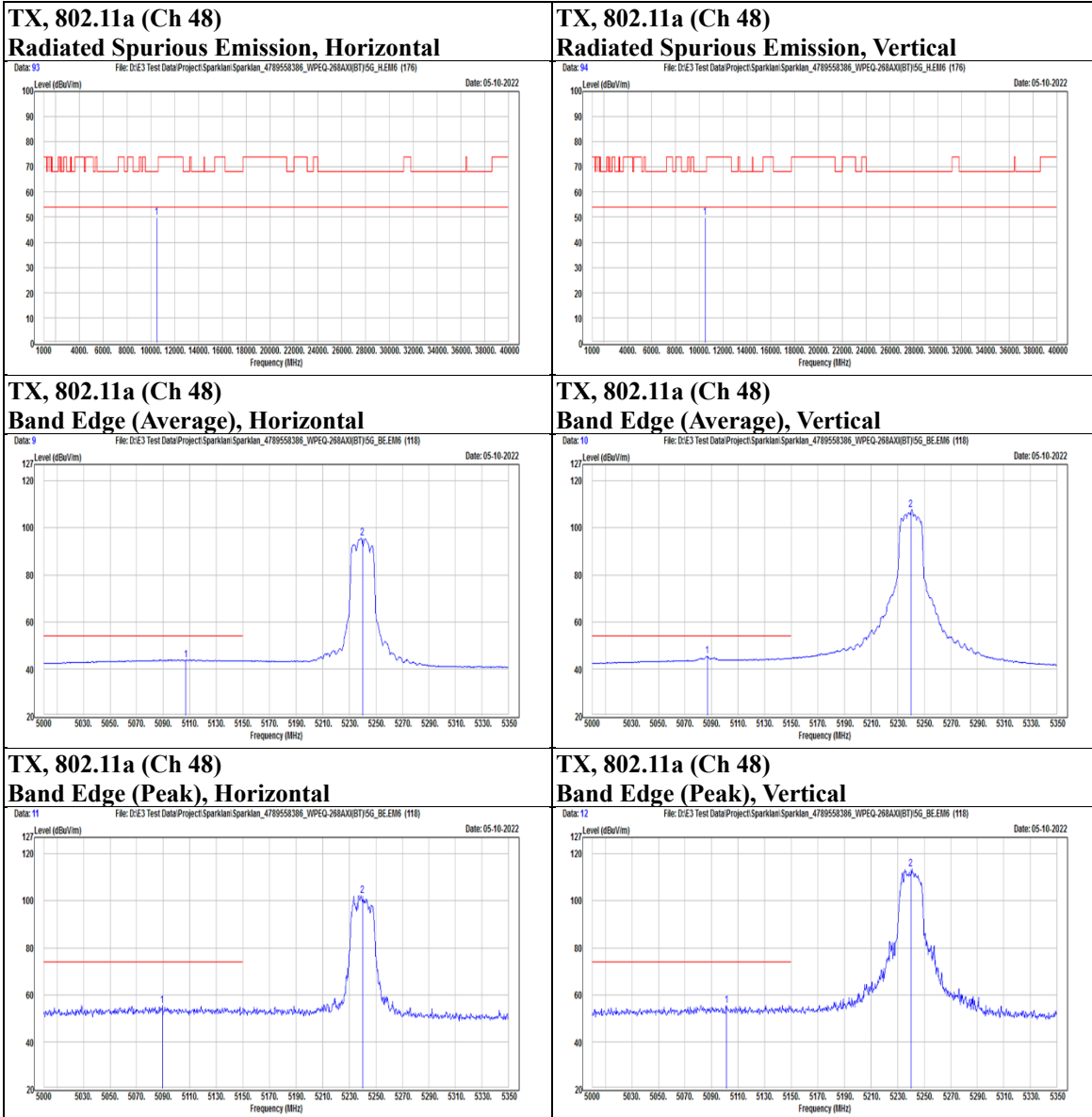
**Underwriters Laboratories Taiwan Co., Ltd.**

Building B and Building E, No. 372-7, Sec. 4, Zhongxing Rd., Zhudong Township, Hsinchu County, Taiwan

Telephone :+886-2-7737-3000

Facsimile (FAX ) :+886-3-583-7948

Doc No: 17-EM-F0878 / 6.0





Mode	802.11a	Channel	52
------	---------	---------	----

Polarization	Notation	Frequency	Reading	Correct	Result	Limit	Margin	Remark
		(MHz)	(dBuV)	(dB/m)	(dBuV/m)	(dBuV/m)	(dB)	
Horizontal	@	5260	90.15	12.88	103.03	N/A	N/A	PK
	@	5260	82.21	12.88	95.09	N/A	N/A	AVG
		5444.4	39.71	13.5	53.21	74	-20.79	PK
		5452.8	28.21	13.53	41.74	54	-12.26	AVG
	*	10520	30.83	17.99	48.82	68.2	-19.38	PK
Vertical	@	5260	100.54	12.88	113.42	N/A	N/A	PK
	@	5260	94.38	12.88	107.26	N/A	N/A	AVG
		5352.6	29.47	13.03	42.5	54	-11.5	AVG
		5355	41.14	13.04	54.18	74	-19.82	PK
	*	10520	32.67	17.99	50.66	68.2	-17.54	PK

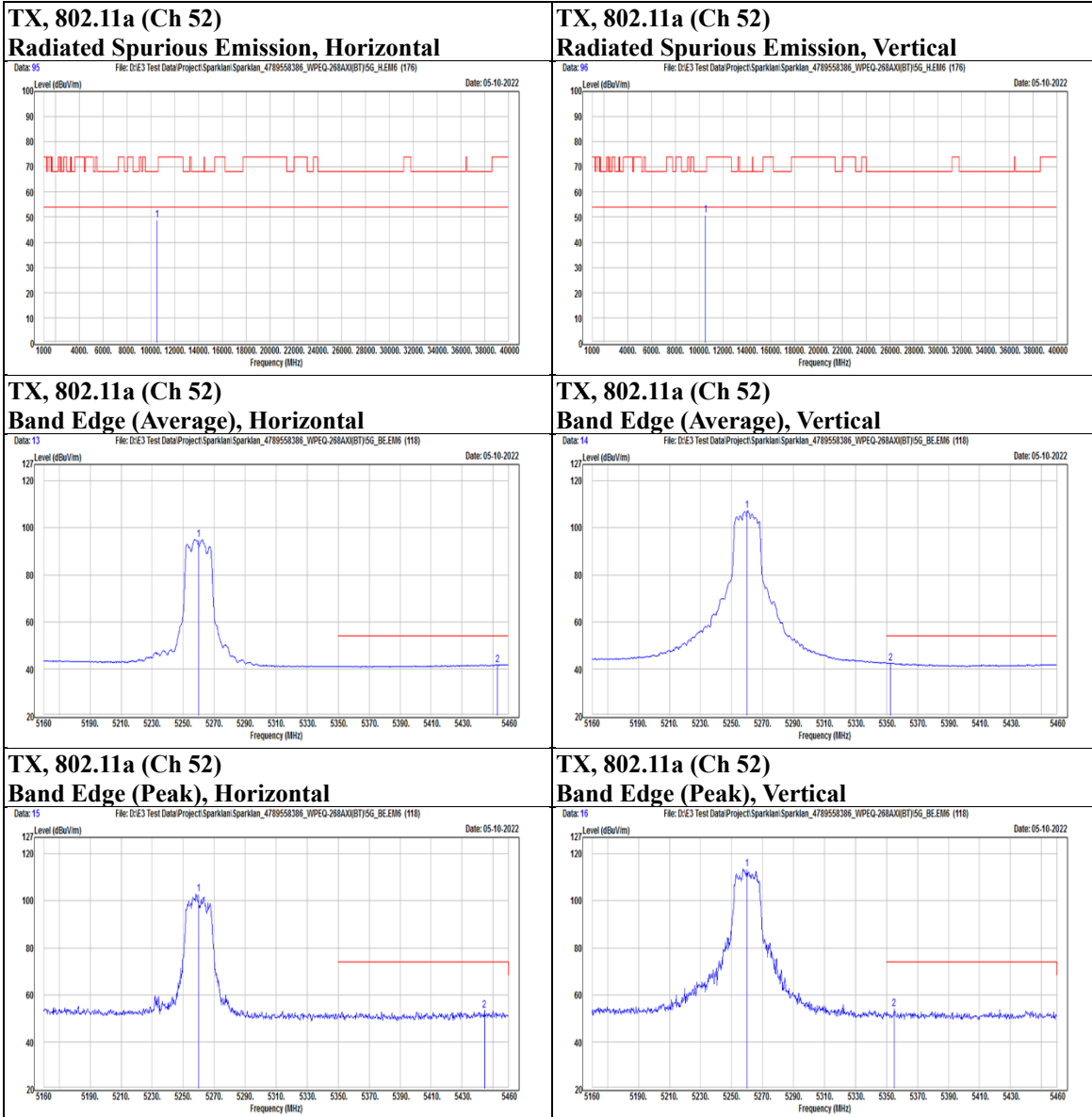
**Underwriters Laboratories Taiwan Co., Ltd.**

Building B and Building E, No. 372-7, Sec. 4, Zhongxing Rd., Zhudong Township, Hsinchu County, Taiwan

Telephone :+886-2-7737-3000

Facsimile (FAX ) :+886-3-583-7948

Doc No: 17-EM-F0878 / 6.0







Test report No. : 4790371368-US-R1-V0  
Page : 122 of 206  
Issued date : 2022/11/9  
FCC ID : RYK-WPEQ268AXB

Mode	802.11a	Channel	60
------	---------	---------	----

Polarization	Notation	Frequency	Reading	Correct	Result	Limit	Margin	Remark
		(MHz)	(dBuV)	(dB/m)	(dBuV/m)	(dBuV/m)	(dB)	
Horizontal	@	5300	88.03	12.77	100.8	N/A	N/A	PK
	@	5300	82.3	12.77	95.07	N/A	N/A	AVG
		5448	39.73	13.5	53.23	74	-20.77	PK
		5460	28.27	13.57	41.84	54	-12.16	AVG
	*	10600	32.25	18.04	50.29	68.2	-17.91	PK
Vertical	@	5300	100.87	12.77	113.64	N/A	N/A	PK
	@	5300	94.87	12.77	107.64	N/A	N/A	AVG
		5350.2	41.81	13.01	54.82	74	-19.18	PK
		5350.2	32.64	13.01	45.65	54	-8.35	AVG
	*	10600	34.88	18.04	52.92	68.2	-15.28	PK

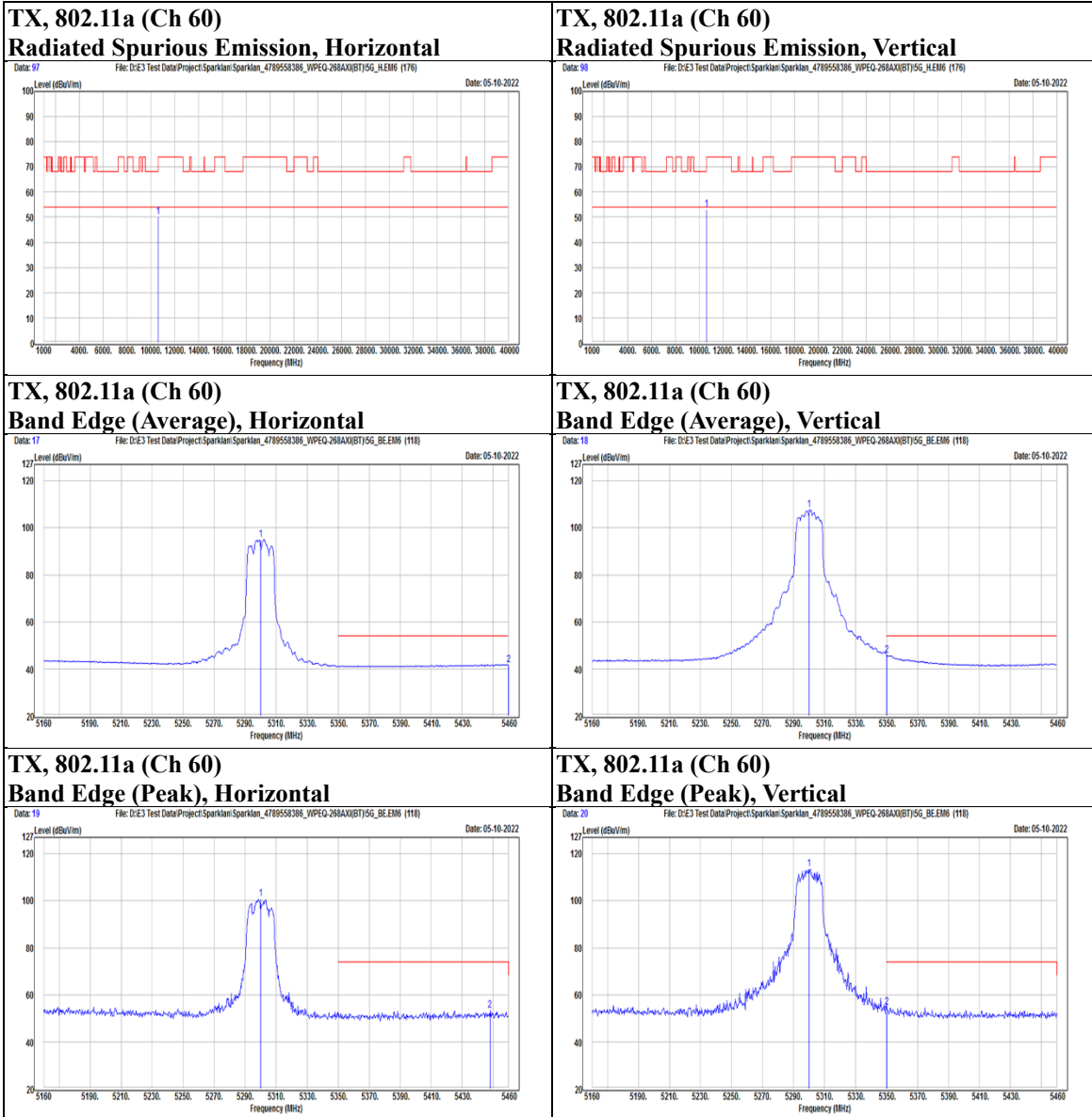
**Underwriters Laboratories Taiwan Co., Ltd.**

Building B and Building E, No. 372-7, Sec. 4, Zhongxing Rd., Zhudong Township, Hsinchu County, Taiwan

Telephone :+886-2-7737-3000

Facsimile (FAX ) :+886-3-583-7948

Doc No: 17-EM-F0878 / 6.0





Test report No. : 4790371368-US-R1-V0  
Page : 124 of 206  
Issued date : 2022/11/9  
FCC ID : RYK-WPEQ268AXB

Mode	802.11a	Channel	64
------	---------	---------	----

Polarization	Notation	Frequency	Reading	Correct	Result	Limit	Margin	Remark
		(MHz)	(dBuV)	(dB/m)	(dBuV/m)	(dBuV/m)	(dB)	
Horizontal	@	5320	85.99	12.86	98.85	N/A	N/A	PK
	@	5320	79.47	12.86	92.33	N/A	N/A	AVG
		5457.3	39.87	13.55	53.42	74	-20.58	PK
		5459.4	28.21	13.57	41.78	54	-12.22	AVG
	*	10640	31.08	18.03	49.11	74	-24.89	PK
Vertical	@	5320	100.74	12.86	113.6	N/A	N/A	PK
	@	5320	92.91	12.86	105.77	N/A	N/A	AVG
		5351.4	42.63	13.02	55.65	74	-18.35	PK
		5352.9	34.46	13.03	47.49	54	-6.51	AVG
	*	10640	31.99	18.03	50.02	74	-23.98	PK

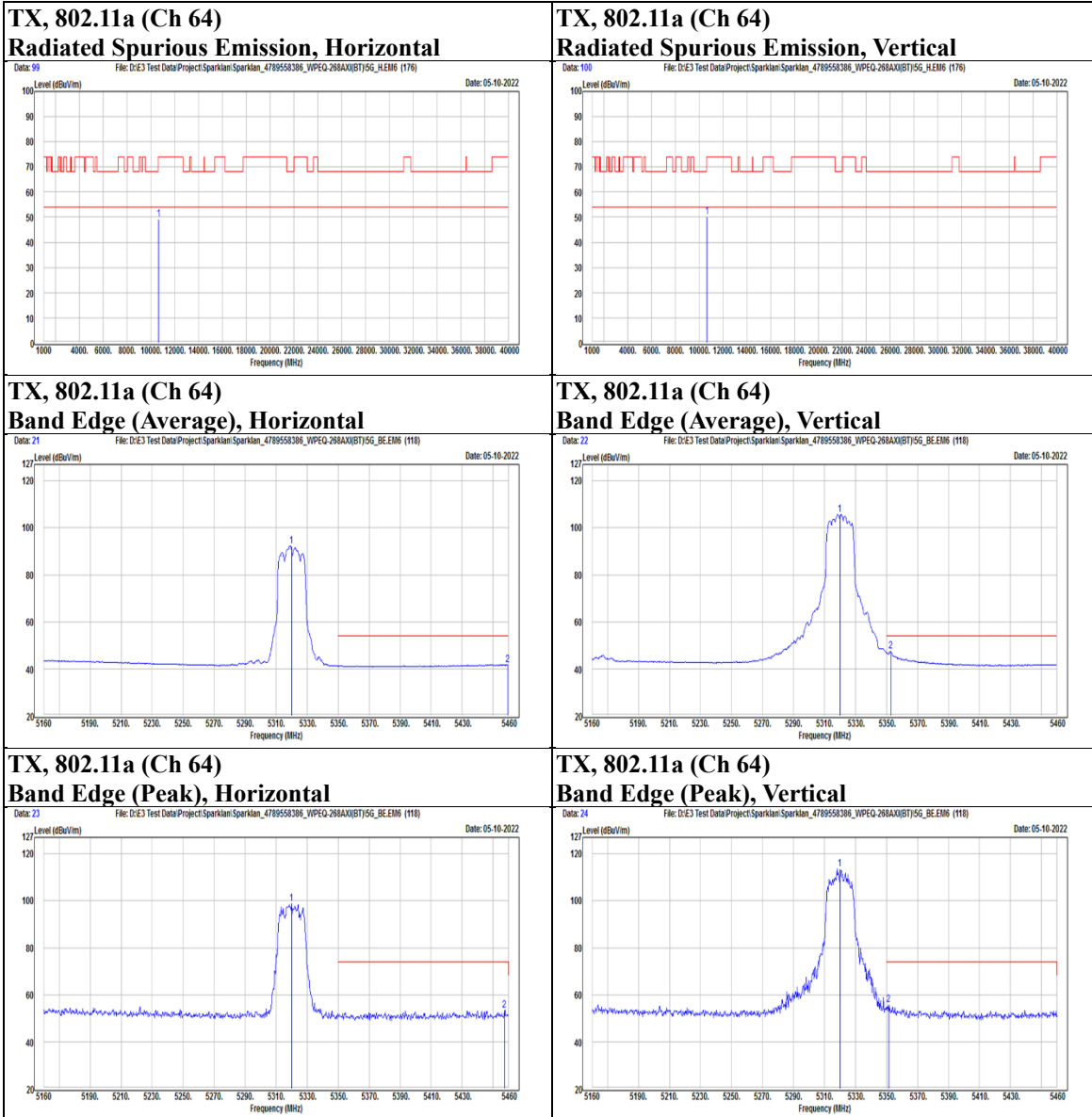
**Underwriters Laboratories Taiwan Co., Ltd.**

Building B and Building E, No. 372-7, Sec. 4, Zhongxing Rd., Zhudong Township, Hsinchu County, Taiwan

Telephone :+886-2-7737-3000

Facsimile (FAX ) :+886-3-583-7948

Doc No: 17-EM-F0878 / 6.0





Mode	802.11a	Channel	100
------	---------	---------	-----

Polarization	Notation	Frequency	Reading	Correct	Result	Limit	Margin	Remark
		(MHz)	(dBuV)	(dB/m)	(dBuV/m)	(dBuV/m)	(dB)	
Horizontal		5448.3	40.71	13.5	54.21	74	-19.79	PK
		5448.3	29.31	13.5	42.81	54	-11.19	AVG
		5464.05	40.74	13.59	54.33	68.2	-13.87	PK
	@	5500	86.01	13.77	99.78	N/A	N/A	PK
	@	5500	76.5	13.77	90.27	N/A	N/A	AVG
	*	11000	29.83	18.41	48.24	74	-25.76	PK
Vertical		5450.75	40.39	13.52	53.91	74	-20.09	PK
		5450.75	30.1	13.52	43.62	54	-10.38	AVG
		5469.3	45.79	13.62	59.41	68.2	-8.79	PK
	@	5500	100.2	13.77	113.97	N/A	N/A	PK
	@	5500	90.1	13.77	103.87	N/A	N/A	AVG
	*	11000	30.43	18.41	48.84	74	-25.16	PK

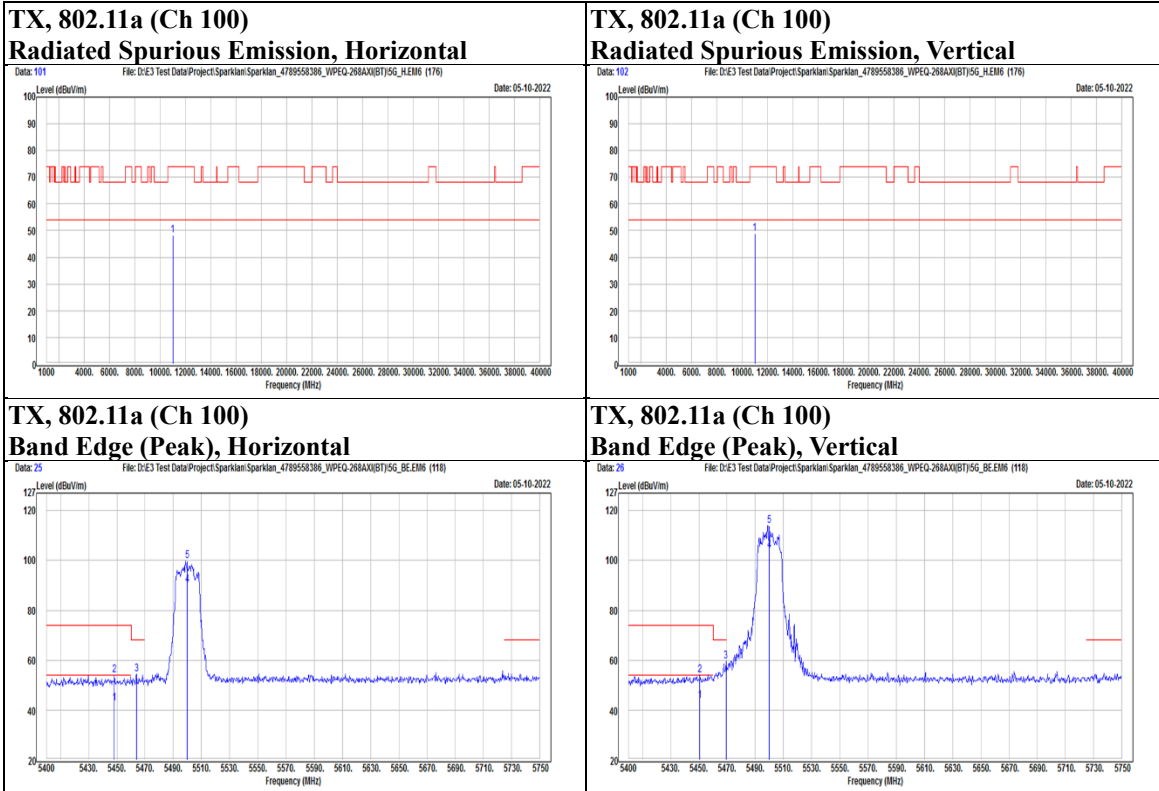
**Underwriters Laboratories Taiwan Co., Ltd.**

Building B and Building E, No. 372-7, Sec. 4, Zhongxing Rd., Zhudong Township, Hsinchu County, Taiwan

Telephone :+886-2-7737-3000

Facsimile (FAX ) :+886-3-583-7948

Doc No: 17-EM-F0878 / 6.0





Mode	802.11a	Channel	116
------	---------	---------	-----

Polarization	Notation	Frequency	Reading	Correct	Result	Limit	Margin	Remark
		(MHz)	(dBuV)	(dB/m)	(dBuV/m)	(dBuV/m)	(dB)	
Horizontal		5430.8	39.61	13.42	53.03	74	-20.97	PK
		5430.8	29.2	13.42	42.62	54	-11.38	AVG
		5463.7	39.36	13.58	52.94	68.2	-15.26	PK
	@	5580	87.79	13.76	101.55	N/A	N/A	PK
	@	5580	77.29	13.76	91.05	N/A	N/A	AVG
		5725	41.3	13.96	55.26	68.2	-12.94	PK
	*	11160	30.62	18.47	49.09	74	-24.91	PK
Vertical		5423.45	40.48	13.38	53.86	74	-20.14	PK
		5423.45	29.71	13.38	43.09	54	-10.91	AVG
		5464.75	40.73	13.59	54.32	68.2	-13.88	PK
	@	5580	99.15	13.76	112.91	N/A	N/A	PK
	@	5580	89.09	13.76	102.85	N/A	N/A	AVG
		5744.4	40.25	14.15	54.4	68.2	-13.8	PK
	*	11160	31.49	18.47	49.96	74	-24.04	PK

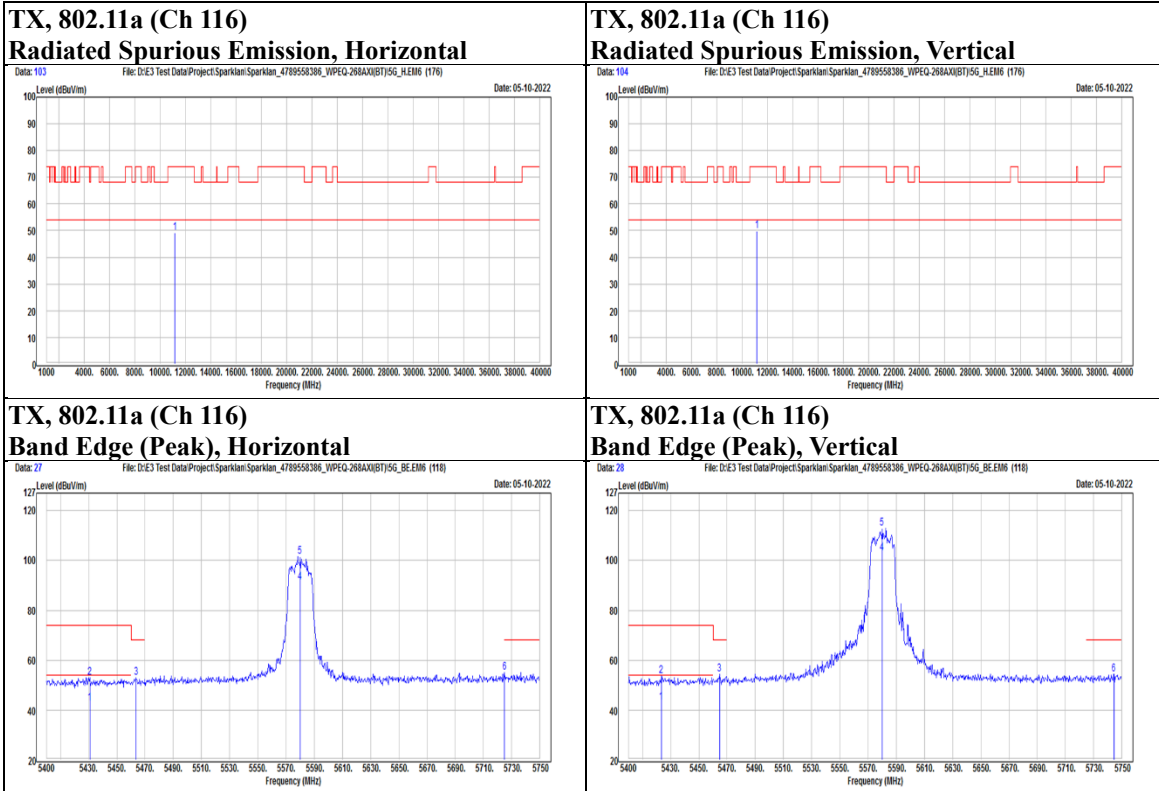
**Underwriters Laboratories Taiwan Co., Ltd.**

Building B and Building E, No. 372-7, Sec. 4, Zhongxing Rd., Zhudong Township, Hsinchu County, Taiwan

Telephone :+886-2-7737-3000

Facsimile (FAX ) :+886-3-583-7948

Doc No: 17-EM-F0878 / 6.0







Test report No. : 4790371368-US-R1-V0  
Page : 130 of 206  
Issued date : 2022/11/9  
FCC ID : RYK-WPEQ268AXB

Mode	802.11a	Channel	140
------	---------	---------	-----

Polarization	Notation	Frequency	Reading	Correct	Result	Limit	Margin	Remark
		(MHz)	(dBuV)	(dB/m)	(dBuV/m)	(dBuV/m)	(dB)	
Horizontal	@	5700	84.96	13.73	98.69	N/A	N/A	PK
	@	5700	74.5	13.73	88.23	N/A	N/A	AVG
		5748.95	40.63	14.19	54.82	68.2	-13.38	PK
	*	11400	30.61	18.85	49.46	74	-24.54	PK
Vertical	@	5700	97.71	13.73	111.44	N/A	N/A	PK
	@	5700	87.4	13.73	101.13	N/A	N/A	AVG
		5725	42.75	13.96	56.71	68.2	-11.49	PK
	*	11400	32.35	18.85	51.2	74	-22.8	PK

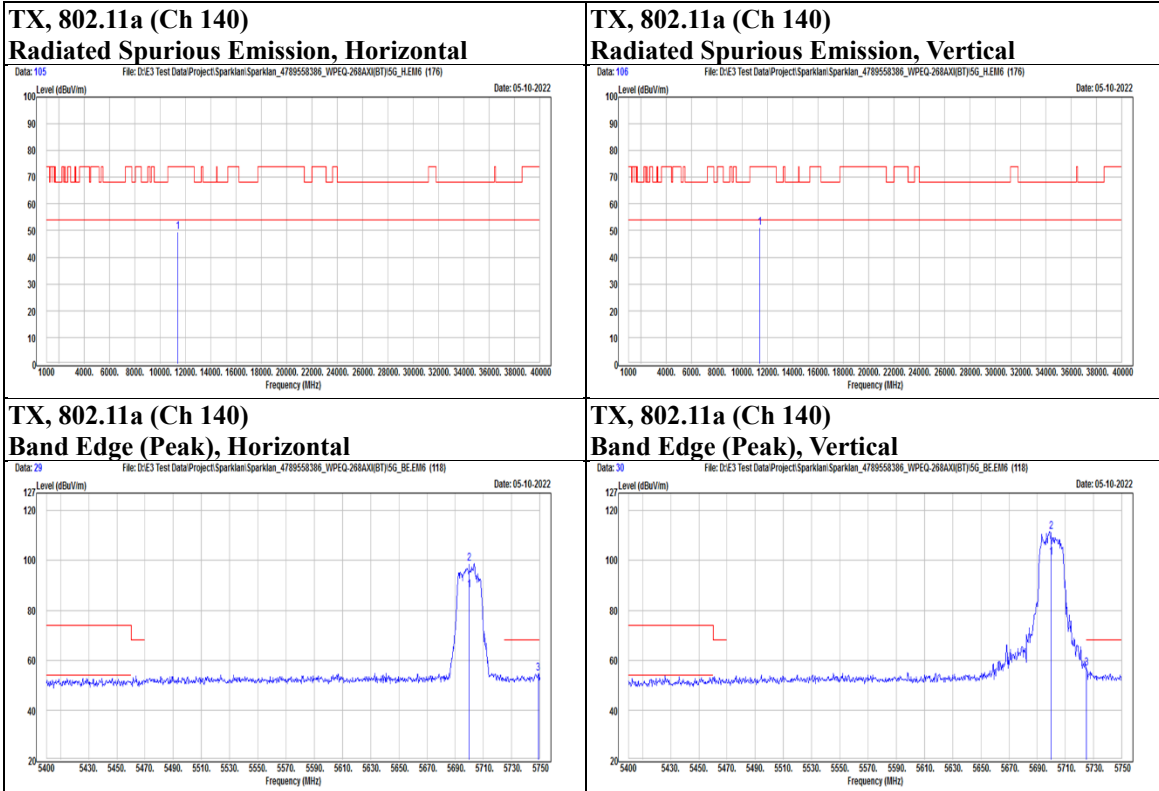
**Underwriters Laboratories Taiwan Co., Ltd.**

Building B and Building E, No. 372-7, Sec. 4, Zhongxing Rd., Zhudong Township, Hsinchu County, Taiwan

Telephone :+886-2-7737-3000

Facsimile (FAX ) :+886-3-583-7948

Doc No: 17-EM-F0878 / 6.0





Test report No. : 4790371368-US-R1-V0  
Page : 132 of 206  
Issued date : 2022/11/9  
FCC ID : RYK-WPEQ268AXB

Mode	802.11a	Channel	144
------	---------	---------	-----

Polarization	Notation	Frequency	Reading	Correct	Result	Limit	Margin	Remark
		(MHz)	(dBuV)	(dB/m)	(dBuV/m)	(dBuV/m)	(dB)	
Horizontal	*	11440	29.79	19.06	48.85	74	-25.15	PK
Vertical	*	11440	32.81	19.06	51.87	74	-22.13	PK

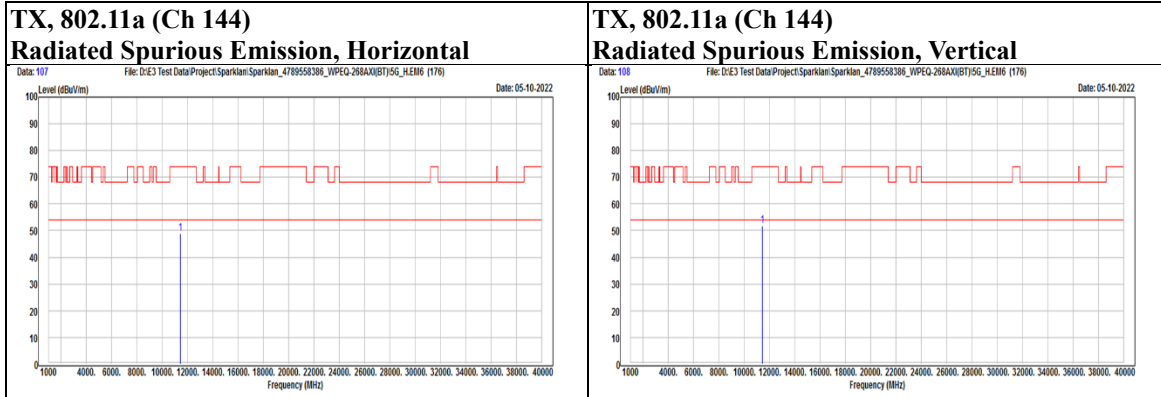
**Underwriters Laboratories Taiwan Co., Ltd.**

Building B and Building E, No. 372-7, Sec. 4, Zhongxing Rd., Zhudong Township, Hsinchu County, Taiwan

Telephone :+886-2-7737-3000

Facsimile (FAX ) :+886-3-583-7948

Doc No: 17-EM-F0878 / 6.0



**Underwriters Laboratories Taiwan Co., Ltd.**

Building B and Building E, No. 372-7, Sec. 4, Zhongxing Rd., Zhudong Township, Hsinchu County, Taiwan

Telephone : +886-2-7737-3000

Facsimile (FAX) : +886-3-583-7948



Mode	802.11a	Channel	149
------	---------	---------	-----

Polarization	Notation	Frequency	Reading	Correct	Result	Limit	Margin	Remark
		(MHz)	(dBuV)	(dB/m)	(dBuV/m)	(dBuV/m)	(dB)	
Horizontal		5596	40.47	13.72	54.19	68.2	-14.01	PK
		5674	40.72	13.7	54.42	86	-31.58	PK
	@	5745	87.88	14.15	102.03	N/A	N/A	PK
	*	11490	29.93	19.33	49.26	74	-24.74	PK
Vertical		5647.5	42.02	13.66	55.68	68.2	-12.52	PK
		5697.5	52.2	13.72	65.92	103.36	-37.44	PK
	@	5745	101.96	14.15	116.11	N/A	N/A	PK
	*	11490	31.68	19.33	51.01	74	-22.99	PK

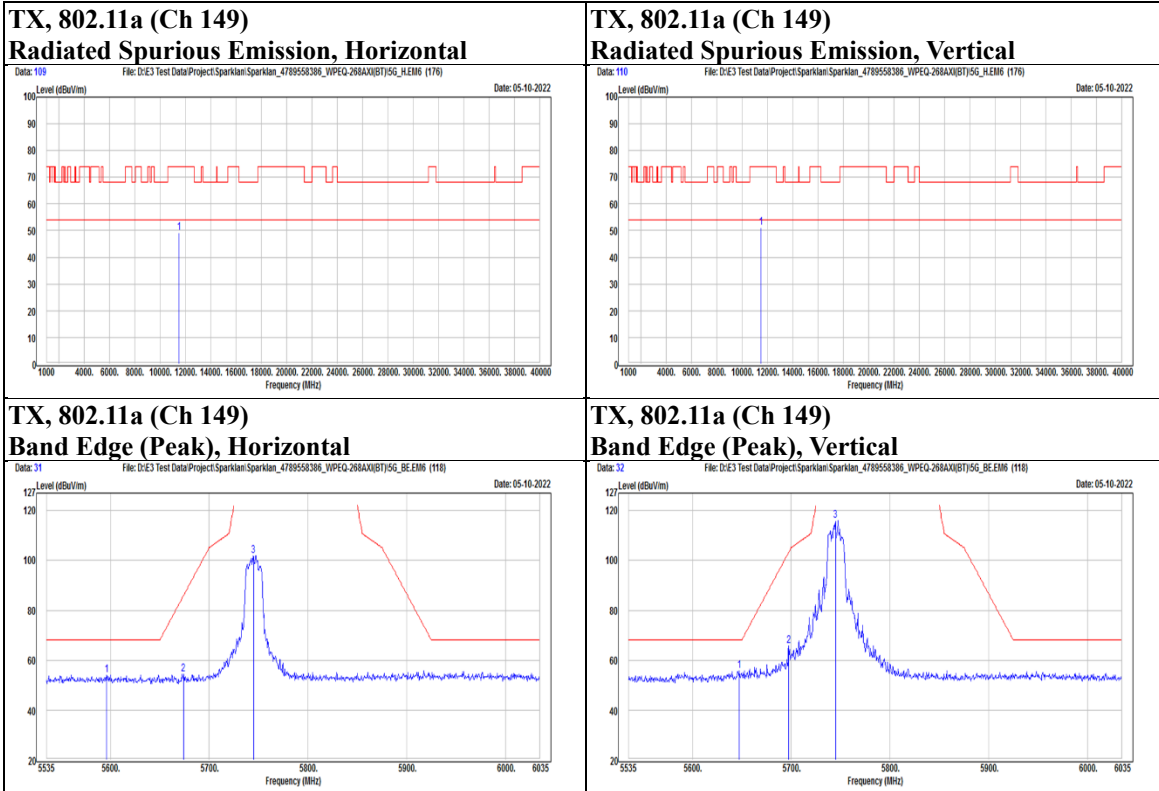
**Underwriters Laboratories Taiwan Co., Ltd.**

Building B and Building E, No. 372-7, Sec. 4, Zhongxing Rd., Zhudong Township, Hsinchu County, Taiwan

Telephone :+886-2-7737-3000

Facsimile (FAX ) :+886-3-583-7948

Doc No: 17-EM-F0878 / 6.0



**Underwriters Laboratories Taiwan Co., Ltd.**

Building B and Building E, No. 372-7, Sec. 4, Zhongxing Rd., Zhudong Township, Hsinchu County, Taiwan

Telephone : +886-2-7737-3000

Facsimile (FAX) : +886-3-583-7948



Mode	802.11a	Channel	157
------	---------	---------	-----

Polarization	Notation	Frequency	Reading	Correct	Result	Limit	Margin	Remark
		(MHz)	(dBuV)	(dB/m)	(dBuV/m)	(dBuV/m)	(dB)	
Horizontal		5591.5	41.35	13.72	55.07	68.2	-13.13	PK
		5685	40.18	13.71	53.89	94.13	-40.24	PK
	@	5785	89.25	14.45	103.7	N/A	N/A	PK
		5919.5	40.33	14.96	55.29	72.25	-16.96	PK
		6010	40.58	14.99	55.57	68.2	-12.63	PK
	*	11570	30.75	19.07	49.82	74	-24.18	PK
Vertical		5632	42.26	13.68	55.94	68.2	-12.26	PK
		5699	41.86	13.73	55.59	104.46	-48.87	PK
	@	5785	101.19	14.45	115.64	N/A	N/A	PK
		5897	41.69	14.95	56.64	88.88	-32.24	PK
		5951	41.01	14.94	55.95	68.2	-12.25	PK
		11570	35.57	19.07	54.64	74	-19.36	PK
		11570	22.1	19.07	41.17	54	-12.83	AVG

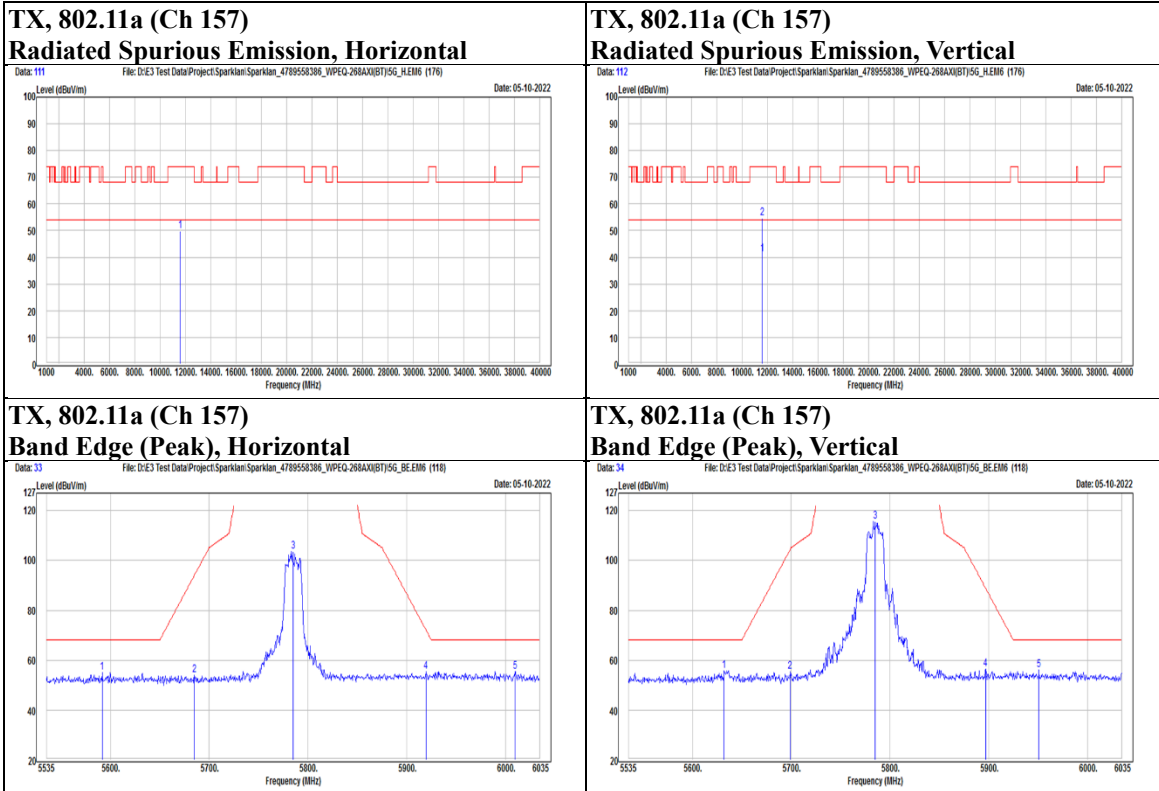
**Underwriters Laboratories Taiwan Co., Ltd.**

Building B and Building E, No. 372-7, Sec. 4, Zhongxing Rd., Zhudong Township, Hsinchu County, Taiwan

Telephone :+886-2-7737-3000

Facsimile (FAX ) :+886-3-583-7948

Doc No: 17-EM-F0878 / 6.0



**Underwriters Laboratories Taiwan Co., Ltd.**

Building B and Building E, No. 372-7, Sec. 4, Zhongxing Rd., Zhudong Township, Hsinchu County, Taiwan

Telephone : +886-2-7737-3000

Facsimile (FAX) : +886-3-583-7948





Test report No. : 4790371368-US-R1-V0  
Page : 138 of 206  
Issued date : 2022/11/9  
FCC ID : RYK-WPEQ268AXB

Mode	802.11a	Channel	165
------	---------	---------	-----

Polarization	Notation	Frequency	Reading	Correct	Result	Limit	Margin	Remark
		(MHz)	(dBuV)	(dB/m)	(dBuV/m)	(dBuV/m)	(dB)	
Horizontal	@	5825	88.89	14.58	103.47	N/A	N/A	PK
		5921	40.93	14.96	55.89	71.15	-15.26	PK
		5989.5	40.24	14.99	55.23	68.2	-12.97	PK
	*	11650	31.17	18.83	50	74	-24	PK
Vertical	@	5825	99.39	14.58	113.97	N/A	N/A	PK
		5919	40.79	14.96	55.75	72.62	-16.87	PK
		5978.5	40.32	14.97	55.29	68.2	-12.91	PK
	*	11650	33.27	18.83	52.1	74	-21.9	PK

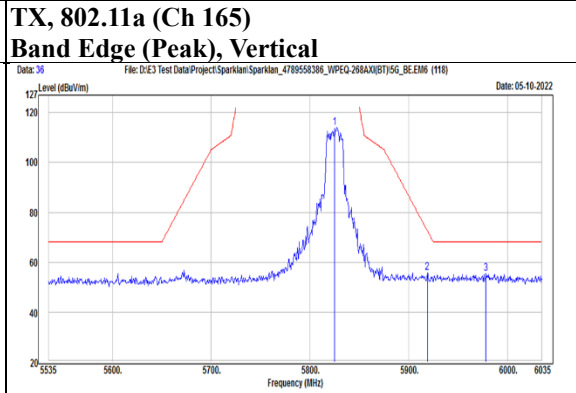
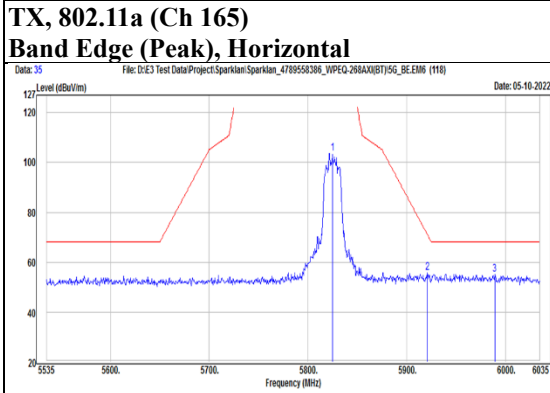
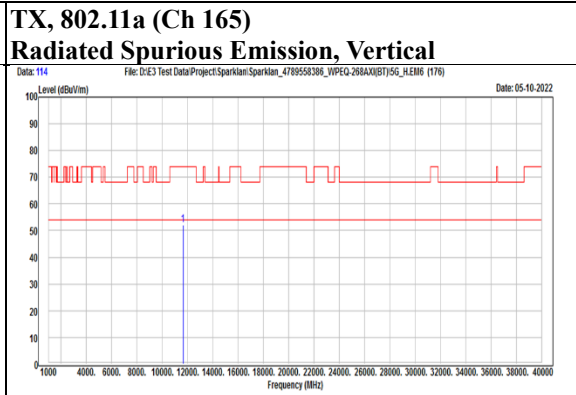
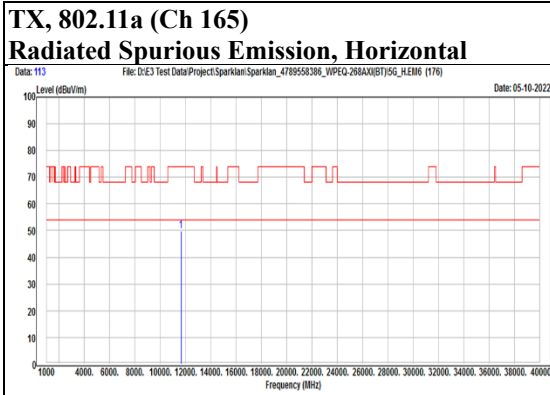
**Underwriters Laboratories Taiwan Co., Ltd.**

Building B and Building E, No. 372-7, Sec. 4, Zhongxing Rd., Zhudong Township, Hsinchu County, Taiwan

Telephone :+886-2-7737-3000

Facsimile (FAX ) :+886-3-583-7948

Doc No: 17-EM-F0878 / 6.0





Mode	802.11ax(HE20)	Channel	36
------	----------------	---------	----

Polarization	Notation	Frequency	Reading	Correct	Result	Limit	Margin	Remark
		(MHz)	(dBuV)	(dB/m)	(dBuV/m)	(dBuV/m)	(dB)	
Horizontal		5083.3	41.79	13.33	55.12	74	-18.88	PK
		5110.6	30.3	13.44	43.74	54	-10.26	AVG
	@	5180	86.03	13.31	99.34	N/A	N/A	PK
	@	5180	76.54	13.31	89.85	N/A	N/A	AVG
	*	10360	30.35	17.51	47.86	68.2	-20.34	PK
Vertical		5148.75	36.22	13.4	49.62	54	-4.38	AVG
		5149.45	45.66	13.4	59.06	74	-14.94	PK
	@	5180	98.44	13.31	111.75	N/A	N/A	PK
	@	5180	90.95	13.31	104.26	N/A	N/A	AVG
	*	10360	30.28	17.51	47.79	68.2	-20.41	PK

**Underwriters Laboratories Taiwan Co., Ltd.**

Building B and Building E, No. 372-7, Sec. 4, Zhongxing Rd., Zhudong Township, Hsinchu County, Taiwan

Telephone :+886-2-7737-3000

Facsimile (FAX ) :+886-3-583-7948

Doc No: 17-EM-F0878 / 6.0

