

# FCC TEST REPORT

Client Name : Shenzhen Hejiaxing Electronics Co., Ltd.  
Address : Floor 2, Building 1, Dongzhijia Industry Park, Lezhujiao Village, Xixiang Town, Baoan District, Shenzhen, China  
Product Name : Flame Atmosphere Speaker  
Date : Aug. 21, 2021



**Shenzhen Anbotek Compliance Laboratory Limited**

# Contents

- 1. General Information.....5
  - 1.1. Client Information..... 5
  - 1.2. Description of Device (EUT)..... 5
  - 1.3. Auxiliary Equipment Used During Test..... 6
  - 1.4. Description of Test Modes..... 6
  - 1.5. List of channels..... 7
  - 1.6. Description Of Test Setup..... 8
  - 1.7. Test Equipment List..... 9
  - 1.8. Measurement Uncertainty..... 10
  - 1.9. Description of Test Facility..... 10
- 2. Summary of Test Results..... 11
- 3. Conducted Emission Test..... 12
  - 3.1. Test Standard and Limit..... 12
  - 3.2. Test Setup..... 12
  - 3.3. Test Procedure..... 12
  - 3.4. Test Data..... 12
- 4. Radiation Spurious Emission and Band Edge..... 15
  - 4.1. Test Standard and Limit..... 15
  - 4.2. Test Setup..... 15
  - 4.3. Test Procedure..... 16
  - 4.4. Test Data..... 17
- 5. Maximum Peak Output Power Test..... 25
  - 5.1. Test Standard and Limit..... 25
  - 5.2. Test Setup..... 25
  - 5.3. Test Procedure..... 25
  - 5.4. Test Data..... 25
- 6. 20DB Occupy Bandwidth Test..... 26
  - 6.1. Test Standard..... 26
  - 6.2. Test Setup..... 26
  - 6.3. Test Procedure..... 26
  - 6.4. Test Data..... 26
- 7. Carrier Frequency Separation Test..... 27
  - 7.1. Test Standard and Limit..... 27
  - 7.2. Test Setup..... 27
  - 7.3. Test Procedure..... 27
  - 7.4. Test Data..... 27
- 8. Number of Hopping Channel Test..... 28
  - 8.1. Test Standard and Limit..... 28

8.2. Test Setup.....28

8.3. Test Procedure.....28

8.4. Test Data.....28

9. Dwell Time Test.....29

9.1. Test Standard and Limit.....29

9.2. Test Setup.....29

9.3. Test Procedure.....29

9.4. Test Data.....29

10. 100kHz Bandwidth of Frequency Band Edge Requirement.....30

10.1. Test Standard and Limit.....30

10.2. Test Setup.....30

10.3. Test Procedure.....30

10.4. Test Data.....30

11. Antenna Requirement.....31

11.1. Test Standard and Requirement.....31

11.2. Antenna Connected Construction.....31

APPENDIX I -- TEST SETUP PHOTOGRAPH.....32

APPENDIX II -- EXTERNAL PHOTOGRAPH.....34

APPENDIX III -- INTERNAL PHOTOGRAPH.....37

APPENDIX IV – Appendix Test Data.....43

# TEST REPORT

Applicant : Shenzhen Hejiaying Electronics Co., Ltd.  
Manufacturer : Shenzhen Hejiaying Electronics Co., Ltd.  
Product Name : Flame Atmosphere Speaker  
Model No. : AJ100  
Trade Mark : N.A.  
Rating(s) : Input: DC 5V, 1A(with DC 3.7V, 3600mAh battery inside)

**Test Standard(s) : FCC Part15 Subpart C, Section 15.247**  
**Test Method(s) : ANSI C63.10: 2020**

The device described above is tested by Shenzhen Anbotek Compliance Laboratory Limited to determine the maximum emission levels emanating from the device and the severe levels of the device can endure and its performance criterion. The measurement results are contained in this test report and Shenzhen Anbotek Compliance Laboratory Limited is assumed full of responsibility for the accuracy and completeness of these measurements. Also, this report shows that the EUT (Equipment Under Test) is technically compliant with the FCC Part 15 Subpart C requirements.

This report applies to above tested sample only and shall not be reproduced in part without written approval of Shenzhen Anbotek Compliance Laboratory Limited.

Date of receipt

Aug. 03, 2021

Date of Test

Aug. 03~18, 2021

Prepared by



(Ella Liang)

Approved & Authorized Signer



(Kingkong Jin)

## 1. General Information

### 1.1. Client Information

Applicant	:	Shenzhen Hejiaxing Electronics Co., Ltd.
Address	:	Floor 2,Building 1,Dongzhijia Industry Park, Lezhujiao Village,Xixiang Town,Baoan District, Shenzhen, China
Manufacturer	:	Shenzhen Hejiaxing Electronics Co., Ltd.
Address	:	Floor 2,Building 1,Dongzhijia Industry Park, Lezhujiao Village,Xixiang Town,Baoan District, Shenzhen, China
Factory	:	Shenzhen Hejiaxing Electronics Co., Ltd.
Address	:	Floor 2,Building 1,Dongzhijia Industry Park, Lezhujiao Village,Xixiang Town,Baoan District, Shenzhen, China

### 1.2. Description of Device (EUT)

Product Name	:	Flame Atmosphere Speaker	
Model No.	:	AJ100	
Trade Mark	:	N.A.	
Test Power Supply	:	AC 120V, 60Hz for adapter/ DC 3.7V Battery inside	
Test Sample No.	:	1-2-1(Normal Sample), 1-2-2(Engineering Sample)	
Product Description	:	Operation Frequency:	2402-2480MHz
		Number of Channel:	79 Channels
		Modulation Type:	GFSK, π/4-DQPSK
		Antenna Type:	PCB Antenna
		Antenna Gain(Peak):	0 dBi
<b>Remark:</b> 1) For a more detailed features description, please refer to the manufacturer's specifications or the User's Manual.			

**1.3. Auxiliary Equipment Used During Test**

Adapter	:	M/N: STC-A2050I1000USBA-C S/N: 201202102100876 Input: 100-240V~50/60Hz 0.3A Output: DC 5V, 1000mA
---------	---	--

**1.4. Description of Test Modes**

To investigate the maximum EMI emission characteristics generates from EUT, the test system was pre-scanning tested base on the consideration of following EUT operation mode or test configuration mode which possible have effect on EMI emission level. Each of these EUT operation mode(s) or test configuration mode(s) mentioned above was evaluated respectively.

**TEST MODE:**

Mode 1	GFSK	CH00	TX+ Charging Mode/TX Only
Mode 2		CH39	
Mode 3		CH78	
Mode 4	π/4-DQPSK	CH00	
Mode 5		CH39	
Mode 6		CH78	

**Note:**

- (1) The measurements are performed at the highest, middle, lowest available channels.
- (2)The data rate was set in 1Mbps for radiated emission due to the highest RF output power.

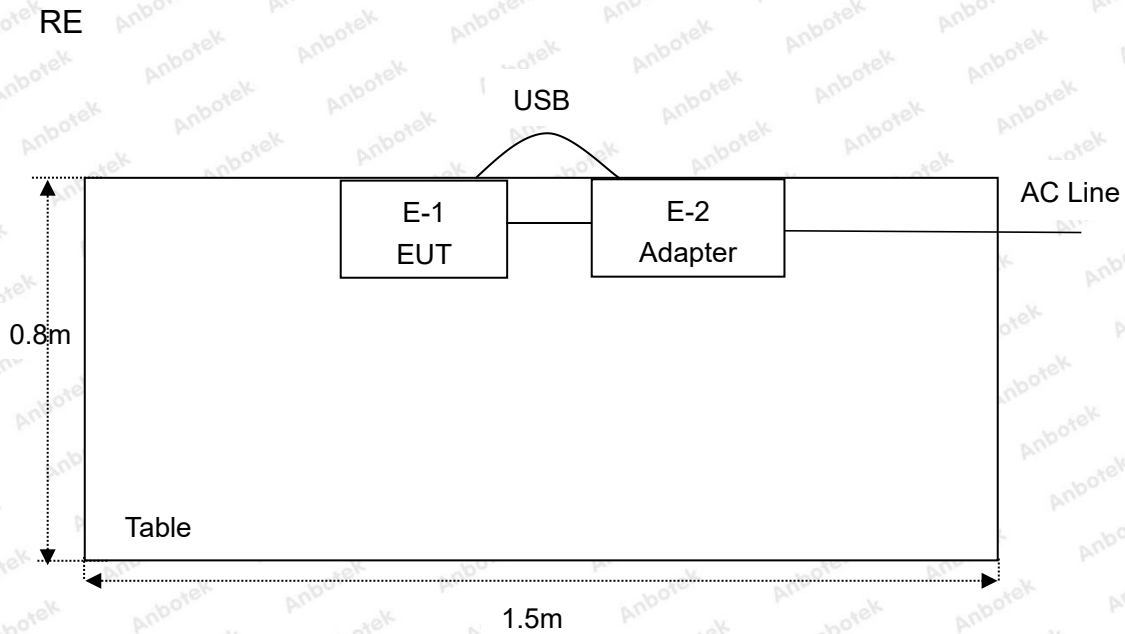
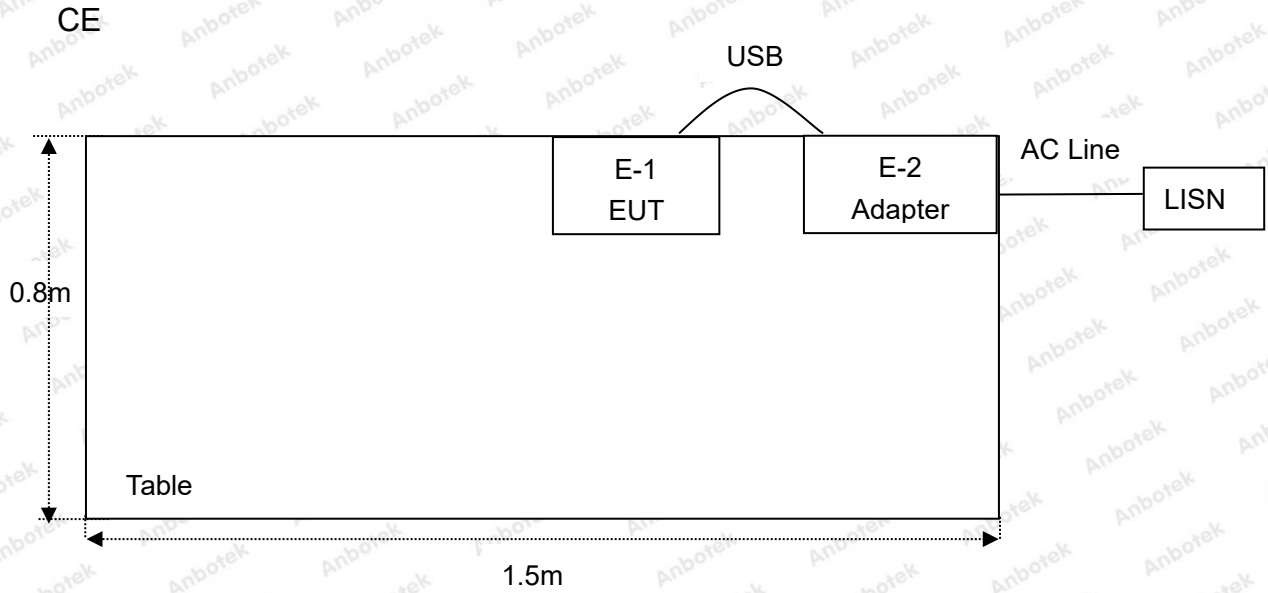
**1.5. List of channels**

Channel	Freq. (MHz)	Channel	Freq. (MHz)	Channel	Freq. (MHz)	Channel	Freq. (MHz)	Channel	Freq. (MHz)
00	2402	17	2419	34	2436	51	2453	68	2470
01	2403	18	2420	35	2437	52	2454	69	2471
02	2404	19	2421	36	2438	53	2455	70	2472
03	2405	20	2422	37	2439	54	2456	71	2473
04	2406	21	2423	38	2440	55	2457	72	2474
05	2407	22	2424	39	2441	56	2458	73	2475
06	2408	23	2425	40	2442	57	2459	74	2476
07	2409	24	2426	41	2443	58	2460	75	2477
08	2410	25	2427	42	2444	59	2461	76	2478
09	2411	26	2428	43	2445	60	2462	77	2479
10	2412	27	2429	44	2446	61	2463	78	2480
11	2413	28	2430	45	2447	62	2464		
12	2414	29	2431	46	2448	63	2465		
13	2415	30	2432	47	2449	64	2466		
14	2416	31	2433	48	2450	65	2467		
15	2417	32	2434	49	2451	66	2468		
16	2418	33	2435	50	2452	67	2469		

**Note:**

1. The engineering test program was provided and the EUT was programmed to be in continuously transmitting mode.
2. EUT built-in battery-powered, fully-charged battery use of the test battery.

## 1.6. Description Of Test Setup





## 1.7. Test Equipment List

Item	Equipment	Manufacturer	Model No.	Serial No.	Last Cal.	Cal. Interval
1.	L.I.S.N. Artificial Mains Network	Rohde & Schwarz	ENV216	100055	Oct. 26, 2020	1 Year
2.	EMI Test Receiver	Rohde & Schwarz	ESCI	100627	Oct. 26, 2020	1 Year
3.	EMI Test Receiver	Rohde & Schwarz	ESR26	101481	Oct. 26, 2020	1 Year
4.	RF Switching Unit	Compliance Direction	RSU-M2	38303	Oct. 26, 2020	1 Year
5.	MAX Spectrum Analysis	Agilent	N9020A	MY51170037	Oct. 26, 2020	1 Year
6.	Preamplifier	SKET Electronic	BK1G18G30 D	KD17503	Oct. 26, 2020	1 Year
7.	Double Ridged Horn Antenna	Instruments corporation	GTH-0118	351600	Nov. 02, 2020	2 Year
8.	Bilog Broadband Antenna	Schwarzbeck	VULB9163	VULB 9163-289	Nov. 02, 2020	2 Year
9.	Loop Antenna	Schwarzbeck	FMZB1519B	00053	Nov. 02, 2020	2 Year
10.	Horn Antenna	A-INFO	LB-180400- KF	J211060628	Nov. 02, 2020	2 Year
11.	Pre-amplifier	SONOMA	310N	186860	Oct. 26, 2020	1 Year
12.	EMI Test Software EZ-EMC	SHURPLE	N/A	N/A	N/A	N/A
13.	RF Test Control System	YIHENG	YH3000	2017430	Oct. 26, 2020	1 Year
14.	Power Sensor	DAER	RPR3006W	15100041SN045	Oct. 26, 2020	1 Year
15.	Power Sensor	DAER	RPR3006W	15100041SN046	Oct. 26, 2020	1 Year
16.	MXA Spectrum Analysis	Agilent	N9020A	MY51170037	Oct. 26, 2020	1 Year
17.	MXG RF Vector Signal Generator	Agilent	N5182A	MY48180656	Oct. 26, 2020	1 Year
18.	Signal Generator	Agilent	E4421B	MY41000743	Oct. 26, 2020	1 Year
19.	DC Power Supply	IVYTECH	IV3605	1804D360510	Oct. 26, 2020	1 Year

### 1.8. Measurement Uncertainty

Radiation Uncertainty	:	Ur = 3.9 dB (Horizontal)
		Ur = 3.8 dB (Vertical)
Conduction Uncertainty	:	Uc = 3.4 dB

### 1.9. Description of Test Facility

The test facility is recognized, certified, or accredited by the following organizations:

#### FCC-Registration No.: 184111

Shenzhen Anbotek Compliance Laboratory Limited, EMC Laboratory has been registered and fully described in a report filed with the (FCC) Federal Communications Commission. The acceptance letter from the FCC is maintained in our files. Registration No. 184111, September 30, 2020.

#### ISED-Registration No.: 8058A

Shenzhen Anbotek Compliance Laboratory Limited, EMC Laboratory has been registered and fully described in a report filed with the (ISED) Innovation, Science and Economic Development Canada. The acceptance letter from the ISED is maintained in our files. Registration 8058A, September 30, 2020.

#### Test Location

Shenzhen Anbotek Compliance Laboratory Limited.

1/F, Building D, Sogood Science and Technology Park, Sanwei community, Hangcheng Street, Bao'an District, Shenzhen, Guangdong, China.518102

## 2. Summary of Test Results

Standard Section	Test Item	Result
15.203/15.247(c)	Antenna Requirement	PASS
15.207	Conducted Emission	PASS
15.205/15.209	Spurious Emission	PASS
15.247(b)(1)	Conducted Peak Output Power	PASS
15.247(a)(1)	20dB Occupied Bandwidth	PASS
15.247(a)(1)	Carrier Frequencies Separation	PASS
15.247(a)(1)	Hopping Channel Number	PASS
15.247(a)(1)	Dwell Time	PASS
15.247(d)	Band Edge	PASS
<b>Remark:</b> "N/A" is an abbreviation for Not Applicable.		

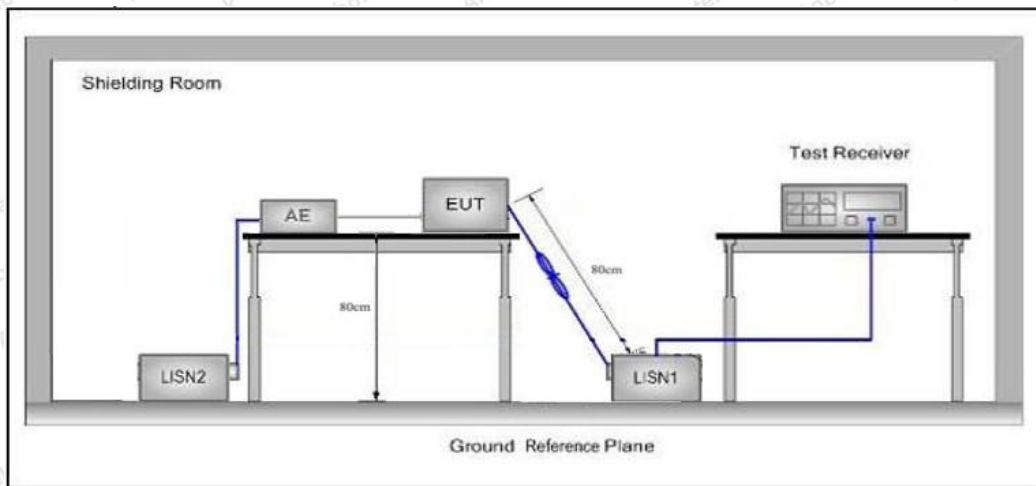
## 3. Conducted Emission Test

### 3.1. Test Standard and Limit

Test Standard	FCC Part15 Section 15.207		
	Frequency	Maximum RF Line Voltage (dBuV)	
		Quasi-peak Level	Average Level
Test Limit	150kHz~500kHz	66 ~ 56 *	56 ~ 46 *
	500kHz~5MHz	56	46
	5MHz~30MHz	60	50

**Remark:** (1) \*Decreasing linearly with logarithm of the frequency.  
 (2) The lower limit shall apply at the transition frequency.

### 3.2. Test Setup



### 3.3. Test Procedure

The EUT system is connected to the power mains through a line impedance stabilization network (L.I.S.N.). This provides a 50ohm coupling impedance for the EUT system. Please refer the block diagram of the test setup and photographs. Both sides of AC line are checked to find out the maximum conducted emission. In order to find the maximum emission levels, the relative positions of equipment and all of the interface cables shall be changed according to FCC ANSI C63.10: 2020 on Conducted Emission Measurement.

The bandwidth of test receiver (ESCI) set at 9kHz.

The frequency range from 150kHz to 30MHz is checked.

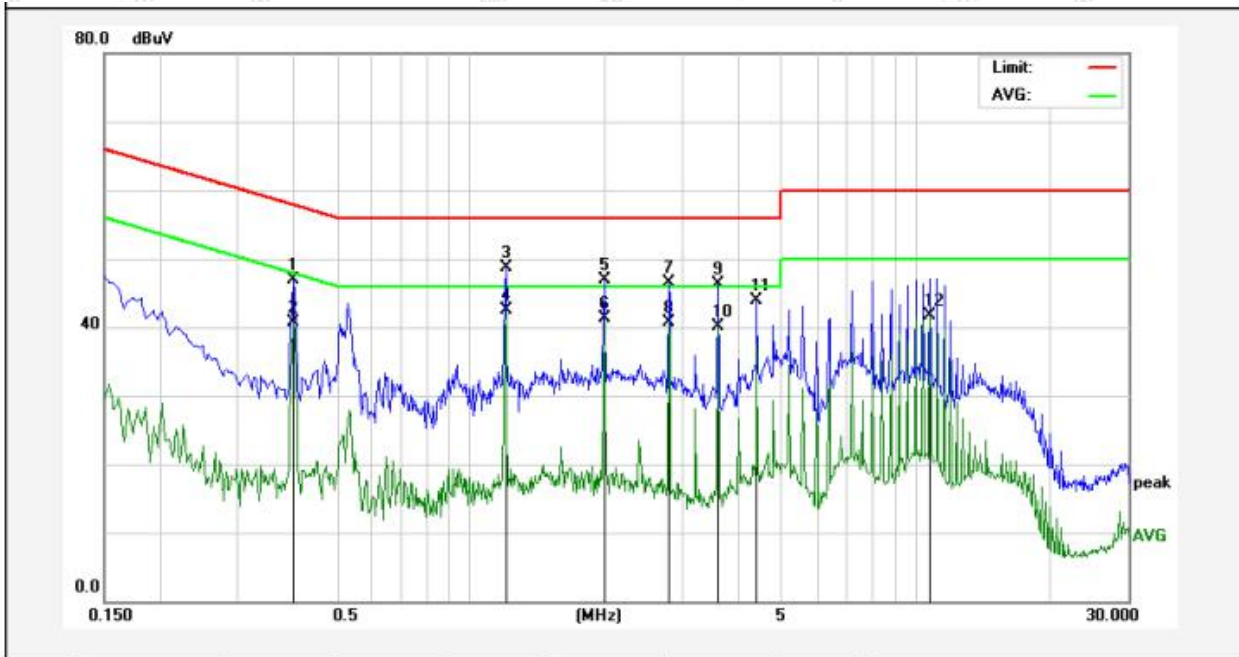
### 3.4. Test Data

During the test, pre-scan the GFSK,  $\pi/4$ QPSK modulation, and found the GFSK modulation Low channel(TX+Charging Mode) which is the worst case, only the worst case is recorded in the report.

Please to see the following pages.

### Conducted Emission Test Data

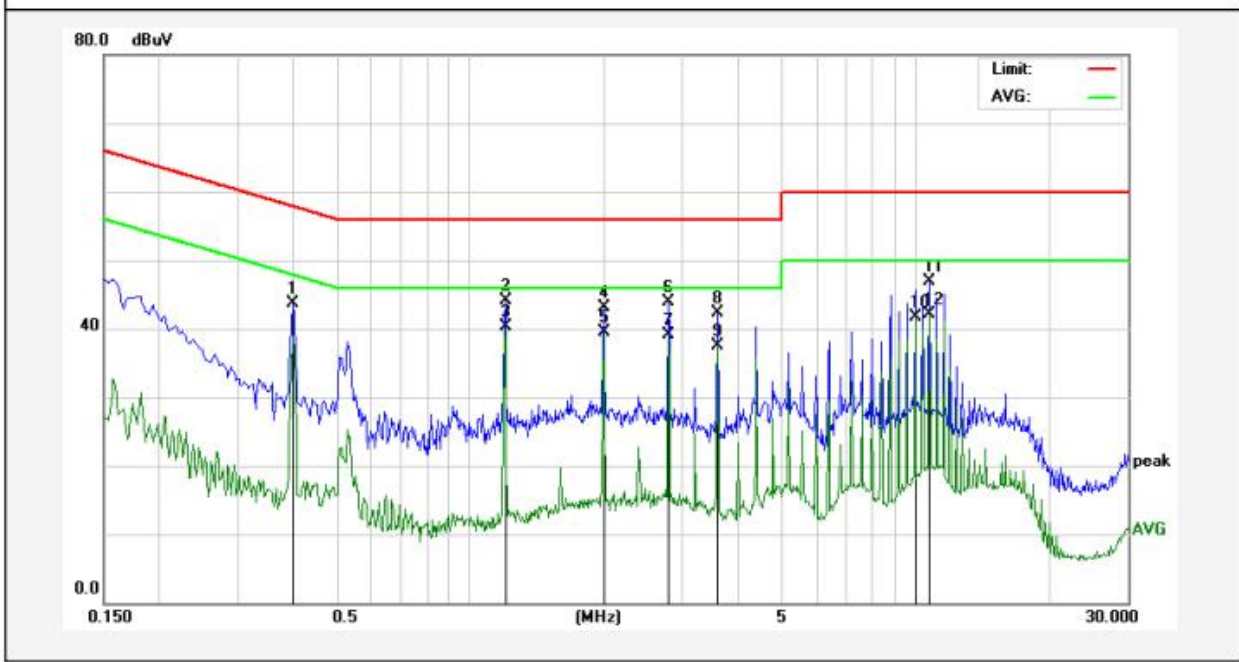
Test Site: 1# Shielded Room  
 Operating Condition: Mode 1  
 Test Specification: AC 120V, 60Hz for adapter  
 Comment: Live Line  
 Tem.: 23.7°C Hum.: 44%



No.	Freq. (MHz)	Reading (dBuV)	Factor (dB)	Result (dBuV)	Limit (dBuV)	Over Limit (dB)	Detector	Remark
1	0.3980	36.66	10.16	46.82	57.89	-11.07	QP	
2	0.3980	30.45	10.16	40.61	47.89	-7.28	AVG	
3	1.1980	38.52	10.25	48.77	56.00	-7.23	QP	
4	1.1980	32.30	10.25	42.55	46.00	-3.45	AVG	
5	1.9940	36.59	10.25	46.84	56.00	-9.16	QP	
6	1.9940	31.09	10.25	41.34	46.00	-4.66	AVG	
7	2.7940	36.21	10.31	46.52	56.00	-9.48	QP	
8	2.7940	30.49	10.31	40.80	46.00	-5.20	AVG	
9	3.5940	35.94	10.27	46.21	56.00	-9.79	QP	
10	3.5940	29.91	10.27	40.18	46.00	-5.82	AVG	
11	4.3900	33.78	10.19	43.97	56.00	-12.03	QP	
12	10.7820	31.52	10.12	41.64	50.00	-8.36	AVG	

### Conducted Emission Test Data

Test Site: 1# Shielded Room  
 Operating Condition: Mode 1  
 Test Specification: AC 120V, 60Hz for adapter  
 Comment: Neutral Line  
 Tem.: 23.7°C Hum.: 44%



No.	Freq. (MHz)	Reading (dBuV)	Factor (dB)	Result (dBuV)	Limit (dBuV)	Over Limit (dB)	Detector	Remark
1	0.3980	33.55	10.11	43.66	57.89	-14.23	QP	
2	1.1980	33.87	10.21	44.08	56.00	-11.92	QP	
3	1.1980	30.12	10.21	40.33	46.00	-5.67	AVG	
4	1.9940	32.98	10.17	43.15	56.00	-12.85	QP	
5	1.9940	29.35	10.17	39.52	46.00	-6.48	AVG	
6	2.7940	33.71	10.16	43.87	56.00	-12.13	QP	
7	2.7940	28.97	10.16	39.13	46.00	-6.87	AVG	
8	3.5900	32.07	10.15	42.22	56.00	-13.78	QP	
9	3.5900	27.43	10.15	37.58	46.00	-8.42	AVG	
10	9.9780	31.66	10.10	41.76	50.00	-8.24	AVG	
11	10.7780	36.84	10.11	46.95	60.00	-13.05	QP	
12	10.7780	31.97	10.11	42.08	50.00	-7.92	AVG	

## 4. Radiation Spurious Emission and Band Edge

### 4.1. Test Standard and Limit

Test Standard	FCC Part15 C Section 15.209 and 15.205				
Test Limit	Frequency (MHz)	Field strength (microvolt/meter)	Limit (dBuV/m)	Remark	Measurement distance (m)
	0.009MHz~0.490MHz	2400/F(kHz)	-	-	300
	0.490MHz-1.705MHz	24000/F(kHz)	-	-	30
	1.705MHz-30MHz	30	-	-	30
	30MHz~88MHz	100	40.0	Quasi-peak	3
	88MHz~216MHz	150	43.5	Quasi-peak	3
	216MHz~960MHz	200	46.0	Quasi-peak	3
	960MHz~1000MHz	500	54.0	Quasi-peak	3
	Above 1000MHz	500	54.0	Average	3
		-	74.0	Peak	3

**Remark:**

(1)The lower limit shall apply at the transition frequency.

(2) 15.35(b), Unless otherwise specified, the limit on peak radio frequency emissions is 20dB above the maximum permitted average emission limit applicable to the equipment under test. This peak limit applies to the total peak emission level radiated by the device.

### 4.2. Test Setup

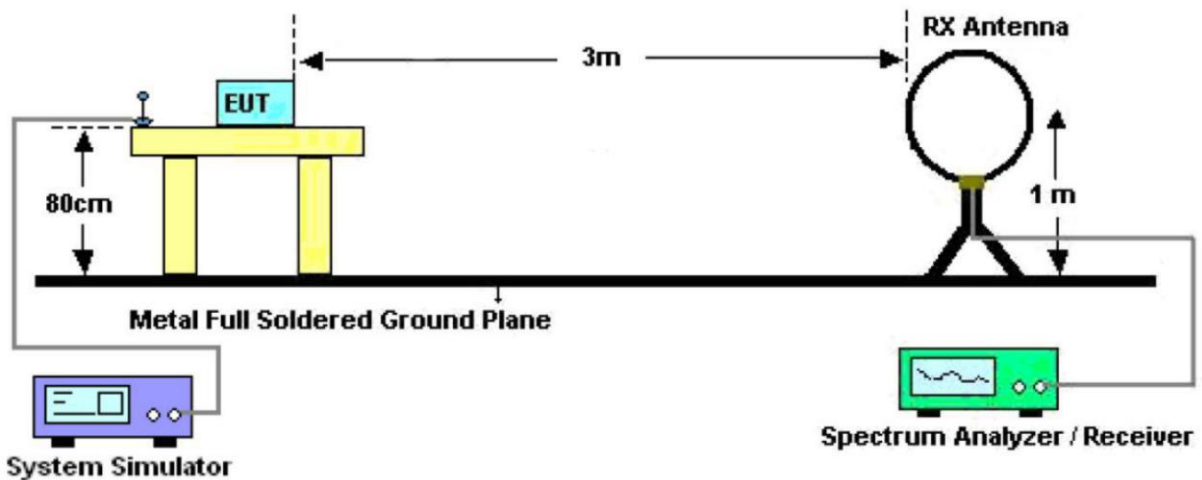


Figure 1. Below 30MHz

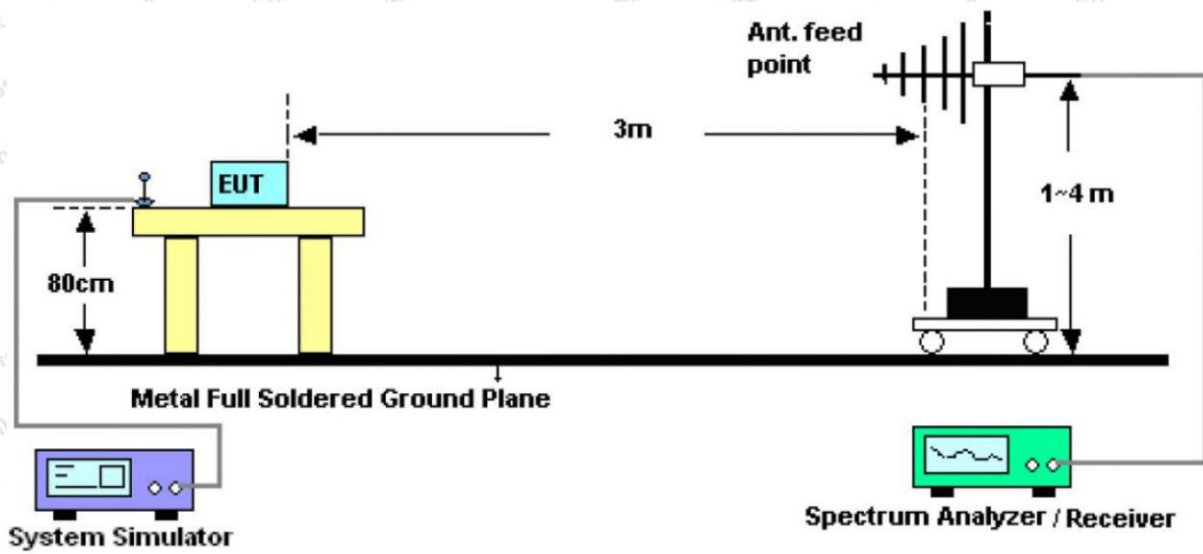


Figure 2. 30MHz to 1GHz

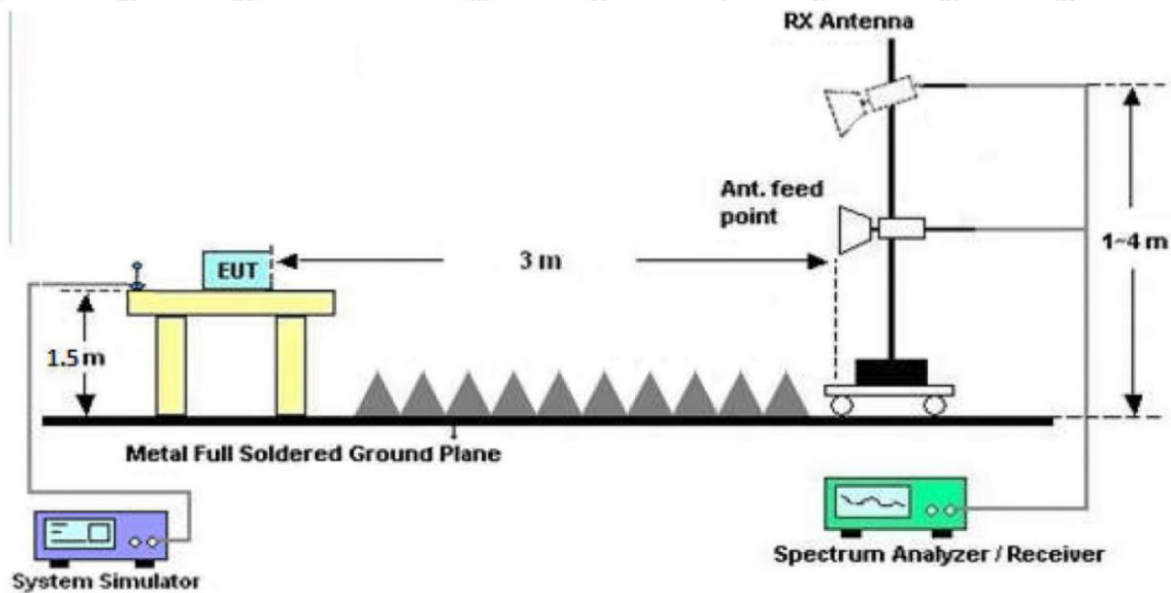


Figure 3. Above 1 GHz

### 4.3. Test Procedure

For below 1GHz: The EUT is placed on a turntable, which is 0.8m above the ground plane.

For above 1GHz: The EUT is placed on a turntable, which is 1.5m above the ground plane.

The turn table can rotate 360 degrees to determine the position of the maximum emission level. The EUT is set 3 meters away from the receiving antenna which is mounted on a antenna tower. The antenna can be moved up and down from 1 to 4 meters to find out the maximum emission level. Rotated the EUT through three orthogonal axes to determine the maximum emissions, both horizontal and vertical polarization of the antenna are set on test. The EUT is tested in 9\*6\*6 Chamber. The device is evaluated in xyz orientation.

For the radiated emission test above 1GHz:



Place the measurement antenna away from each area of the EUT determined to be a source of emissions at the specified measurement distance, while keeping the measurement antenna aimed at the source of emissions at each frequency of significant emissions, with polarization oriented for maximum response. The measurement antenna may have to be higher or lower than the EUT, depending on the radiation pattern of the emission and staying aimed at the emission source for receiving the maximum signal. The final measurement antenna elevation shall be that which maximizes the emissions. The measurement antenna elevation for maximum emissions shall be restricted to a range of heights of from 1 m to 4 m above the ground or reference ground plane.

For 9kHz to 150kHz, Set the spectrum analyzer as:

RBW = 200Hz, VBW =1kHz, Detector= Quasi-Peak, Trace mode= Max hold, Sweep- auto couple.

For 150kHz to 30MHz, Set the spectrum analyzer as:

RBW = 9KHz, VBW =30kHz, Detector= Quasi-Peak, Trace mode= Max hold, Sweep- auto couple.

For 30MHz to 1000MHz, Set the spectrum analyzer as:

RBW = 120kHz, VBW =300kHz, Detector= Quasi-Peak, Trace mode= Max hold, Sweep- auto couple.

For above 1GHz, Set the spectrum analyzer as:

RBW =1MHz, VBW =1MHz, Detector= Peak, Trace mode= Max hold, Sweep- auto couple.

For average measurement: use duty cycle correction factor method (DCCF)

Average level = Peak level + DCCF

#### 4.4. Test Data

##### PASS

During the test, Pre-scan all kind of the place mode (X-axis, Y-axis, Z-axis), and found the X-axis is the worst case.

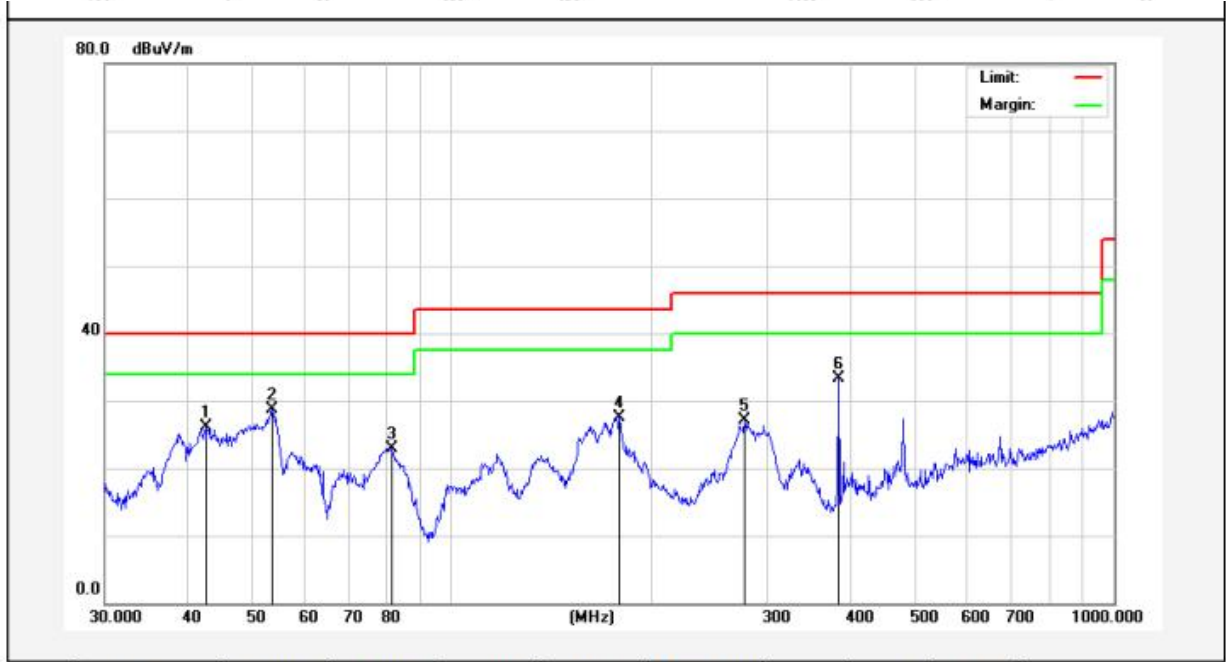
During the test, pre-scan the GFSK,  $\pi/4$ QPSK modulation, and found the GFSK modulation Low channel(TX+Charging Mode) which is the worst case, only the worst case is recorded in the report

The test results of 9kHz-30MHz was attenuated more than 20dB below the permissible limits, so the results don't record in the report.



**Test Results (30~1000MHz)**

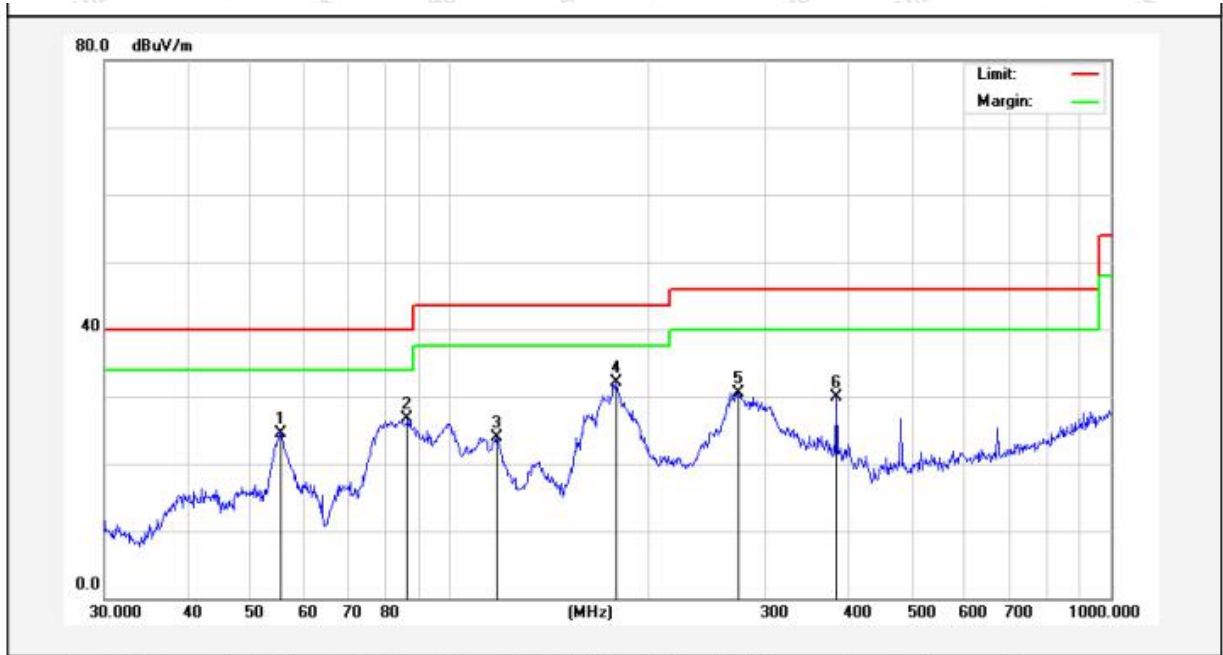
Test Mode: Mode 1  
 Power Source: AC 120V, 60Hz for adapter  
 Polarization: Vertical  
 Temp.(°C)/Hum.(%RH): 23.6°C/48%RH



No.	Freq. (MHz)	Reading (dBuV)	Factor (dB/m)	Result (dBuV/m)	Limit (dBuV/m)	Over Limit (dB)	Detector	Height (cm)	degree (deg)	Remark
1	42.7496	40.02	-13.86	26.16	40.00	-13.84	QP	100	360	
2	53.6932	44.71	-16.10	28.61	40.00	-11.39	QP	100	0	
3	81.2117	40.38	-17.48	22.90	40.00	-17.10	QP	100	360	
4	179.3863	45.77	-18.29	27.48	43.50	-16.02	QP	100	0	
5	277.0935	41.28	-14.26	27.02	46.00	-18.98	QP	100	360	
6	383.9318	44.77	-11.51	33.26	46.00	-12.74	QP	100	0	

**Test Results (30~1000MHz)**

Test Mode: Mode 1  
 Power Source: AC 120V, 60Hz for adapter  
 Polarization: Horizontal  
 Temp.(°C)/Hum.(%RH): 23.6°C/48%RH



No.	Freq. (MHz)	Reading (dBuV)	Factor (dB/m)	Result (dBuV/m)	Limit (dBuV/m)	Over Limit (dB)	Detector	Height (cm)	degree (deg)	Remark
1	55.4147	40.93	-16.51	24.42	40.00	-15.58	QP	100	360	
2	86.2001	47.01	-20.33	26.68	40.00	-13.32	QP	100	0	
3	117.7725	45.67	-21.79	23.88	43.50	-19.62	QP	100	360	
4	178.1327	53.10	-20.92	32.18	43.50	-11.32	QP	100	0	
5	273.2341	47.25	-16.72	30.53	46.00	-15.47	QP	100	360	
6	383.9318	42.89	-12.98	29.91	46.00	-16.09	QP	100	0	

**Test Results (1GHz-25GHz)**

Test Mode: CH00	Test channel: Lowest
-----------------	----------------------

Peak value:						
Frequency (MHz)	Reading (dBuV)	Factor (dB/m)	Result (dBuV/m)	Limit Line (dBuV/m)	Over Limit (dB)	polarization
4804.00	27.19	15.27	42.46	74.00	-31.54	Vertical
7206.00	28.35	18.09	46.44	74.00	-27.56	Vertical
9608.00	29.18	23.76	52.94	74.00	-21.06	Vertical
12010.00	*			74.00		Vertical
14412.00	*			74.00		Vertical
4804.00	27.56	15.27	42.83	74.00	-31.17	Horizontal
7206.00	28.52	18.09	46.61	74.00	-27.39	Horizontal
9608.00	28.24	23.76	52.00	74.00	-22.00	Horizontal
12010.00	*			74.00		Horizontal
14412.00	*			74.00		Horizontal
Average value:						
Frequency (MHz)	Reading (dBuV)	Factor (dB/m)	Result (dBuV/m)	Limit Line (dBuV/m)	Over Limit (dB)	polarization
4804.00	16.57	15.27	31.84	54.00	-22.16	Vertical
7206.00	17.38	18.09	35.47	54.00	-18.53	Vertical
9608.00	18.20	23.76	41.96	54.00	-12.04	Vertical
12010.00	*			54.00		Vertical
14412.00	*			54.00		Vertical
4804.00	15.91	15.27	31.18	54.00	-22.82	Horizontal
7206.00	17.58	18.09	35.67	54.00	-18.33	Horizontal
9608.00	17.55	23.76	41.31	54.00	-12.69	Horizontal
12010.00	*			54.00		Horizontal
14412.00	*			54.00		Horizontal

**Test Results (1GHz-25GHz)**

Test Mode: CH39	Test channel: Middle
-----------------	----------------------

Peak value:						
Frequency (MHz)	Reading (dBuV)	Factor (dB/m)	Result (dBuV/m)	Limit Line (dBuV/m)	Over Limit (dB)	polarization
4882.00	27.21	15.42	42.63	74.00	-31.37	Vertical
7323.00	28.20	18.02	46.22	74.00	-27.78	Vertical
9764.00	28.19	23.80	51.99	74.00	-22.01	Vertical
12205.00	*			74.00		Vertical
14646.00	*			74.00		Vertical
4882.00	27.26	15.42	42.68	74.00	-31.32	Horizontal
7323.00	28.51	18.02	46.53	74.00	-27.47	Horizontal
9764.00	27.94	23.80	51.74	74.00	-22.26	Horizontal
12205.00	*			74.00		Horizontal
14646.00	*			74.00		Horizontal
Average value:						
Frequency (MHz)	Reading (dBuV)	Factor (dB/m)	Result (dBuV/m)	Limit Line (dBuV/m)	Over Limit (dB)	polarization
4882.00	16.30	15.42	31.72	54.00	-22.28	Vertical
7323.00	17.48	18.02	35.50	54.00	-18.50	Vertical
9764.00	18.06	23.80	41.86	54.00	-12.14	Vertical
12205.00	*			54.00		Vertical
14646.00	*			54.00		Vertical
4882.00	15.82	15.42	31.24	54.00	-22.76	Horizontal
7323.00	17.14	18.02	35.16	54.00	-18.84	Horizontal
9764.00	18.06	23.80	41.86	54.00	-12.14	Horizontal
12205.00	*			54.00		Horizontal
14646.00	*			54.00		Horizontal

**Test Results (1GHz-25GHz)**

Test Mode: CH78	Test channel: Highest
-----------------	-----------------------

Peak value:						
Frequency (MHz)	Reading (dBuV)	Factor (dB/m)	Result (dBuV/m)	Limit Line (dBuV/m)	Over Limit (dB)	polarization
4960.00	27.48	15.58	43.06	74.00	-30.94	Vertical
7440.00	28.21	17.93	46.14	74.00	-27.86	Vertical
9920.00	28.74	23.83	52.57	74.00	-21.43	Vertical
12400.00	*			74.00		Vertical
14880.00	*			74.00		Vertical
4960.00	27.33	15.58	42.91	74.00	-31.09	Horizontal
7440.00	28.54	17.93	46.47	74.00	-27.53	Horizontal
9920.00	28.62	23.83	52.45	74.00	-21.55	Horizontal
12400.00	*			74.00		Horizontal
14880.00	*			74.00		Horizontal
Average value:						
Frequency (MHz)	Reading (dBuV)	Factor (dB/m)	Result (dBuV/m)	Limit Line (dBuV/m)	Over Limit (dB)	polarization
4960.00	17.42	15.58	33.00	54.00	-21.00	Vertical
7440.00	18.49	17.93	36.42	54.00	-17.58	Vertical
9920.00	18.61	23.83	42.44	54.00	-11.56	Vertical
12400.00				54.00		Vertical
14880.00				54.00		Vertical
4960.00	17.26	15.58	32.84	54.00	-21.16	Horizontal
7440.00	18.51	17.93	36.44	54.00	-17.56	Horizontal
9920.00	17.96	23.83	41.79	54.00	-12.21	Horizontal
12400.00	*			54.00		Horizontal
14880.00	*			54.00		Horizontal

Remark:

1. During the test, pre-scan the GFSK, π/4QPSK modulation, and found the GFSK modulation is worse case, the report only record this mode.
2. Result=Reading + Factor
3. "\*" means the test results were attenuated more than 20dB below the permissible limits, so the results don't record in the report.

**Radiated Band Edge:**





Remark:

1. During the test, pre-scan the GFSK,  $\pi/4$ QPSK modulation, and found the GFSK modulation is worse case, the report only record this mode.

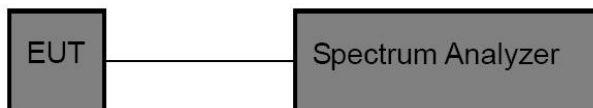


## 5. Maximum Peak Output Power Test

### 5.1. Test Standard and Limit

Test Standard	FCC Part15 C Section 15.247 (b)(1)
Test Limit	According to §15.247(b) (1), For frequency hopping systems operating in the 2400-2483.5 MHz band employing at least 75 non-overlapping hopping channels, and all frequency hopping systems in the 5725-5850 MHz band: 1 watt. For all other frequency hopping systems in the 2400-2483.5 MHz band: 0.125 watts.

### 5.2. Test Setup



### 5.3. Test Procedure

1. The EUT was directly connected to the spectrum analyzer and antenna output port as show in the block diagram above,
2. Spectrum Setting:
  - RBW > the 20 dB bandwidth of the emission being measured
  - Span = approximately 5 times the 20 dB bandwidth, centered on a hopping channel
  - VBW ≥ RBW
  - Sweep = auto
  - Detector function = peak
  - Trace = max hold

### 5.4. Test Data

Pass

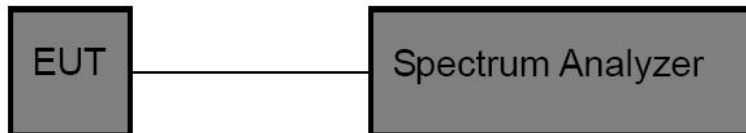
Please refer to Appendix C of the Appendix Test Data.

## 6. 20DB Occupy Bandwidth Test

### 6.1. Test Standard

Test Standard	FCC Part15 C Section 15.247 (a)(1)
---------------	------------------------------------

### 6.2. Test Setup



### 6.3. Test Procedure

Using the following spectrum analyzer settings:

1. Span= approximately 2 to 3 times the 20dB bandwidth, centered on a hopping channel.
2. Set the RBW  $\geq 1\%$  of the 20 dB bandwidth.
3. Set the VBW  $\geq$ RBW
4. Sweep time = auto couple.
5. Detector function = peak.
6. Trace mode = max hold.
7. Allow trace to fully stabilize.

### 6.4. Test Data

Pass

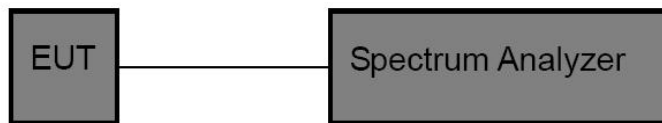
Please refer to Appendix A of the Appendix Test Data.

## 7. Carrier Frequency Separation Test

### 7.1. Test Standard and Limit

Test Standard	FCC Part15 C Section 15.247 (a)(1)
Test Limit	>25KHz or >two-thirds of the 20 dB bandwidth

### 7.2. Test Setup



### 7.3. Test Procedure

The EUT must have its hopping function enabled. Using the following spectrum analyzer settings:

1. Span= Wide enough to capture the peaks of two adjacent channels
2. Set the RBW =approximately 30% of the channel spacing.
3. Set the VBW  $\geq$  RBW.
4. Sweep time = auto couple.
5. Detector function = peak.
6. Trace mode = max hold.
7. Allow trace to fully stabilize.

### 7.4. Test Data

Pass

Please refer to Appendix D of the Appendix Test Data.

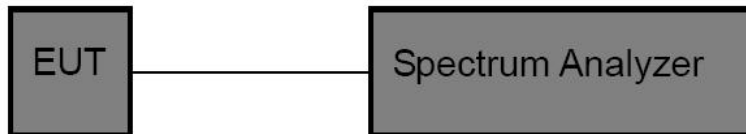


## 8. Number of Hopping Channel Test

### 8.1. Test Standard and Limit

Test Standard	FCC Part15 C Section 15.247 (a)(1)
Test Limit	>15 channels

### 8.2. Test Setup



### 8.3. Test Procedure

The EUT must have its hopping function enabled. Using the following spectrum analyzer setting:

1. Span= the frequency band of operation
2. Set the RBW = less than 30% of the channel spacing or the 20 dB bandwidth, whichever is smaller.
3. Set the VBW  $\geq$  RBW.
4. Sweep time = auto couple.
5. Detector function = peak.
6. Trace mode = max hold.
7. Allow trace to fully stabilize.

### 8.4. Test Data

Pass

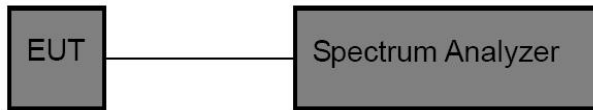
Please refer to Appendix F of the Appendix Test Data.

## 9. Dwell Time Test

### 9.1. Test Standard and Limit

Test Standard	FCC Part15 C Section 15.247 (a)(1)
Test Limit	0.4 sec

### 9.2. Test Setup



### 9.3. Test Procedure

The EUT must have its hopping function enabled. Use the following spectrum analyzer settings:

1. Span= zero span, centered on a hopping channel
2. Set the RBW = 1 MHz.
3. Set the VBW = 1 MHz.
4. Sweep time = as necessary to capture the entire dwell time per hopping channel.
5. Detector function = peak.
6. Trace mode = max hold.
7. Allow trace to fully stabilize.

### 9.4. Test Data

Pass

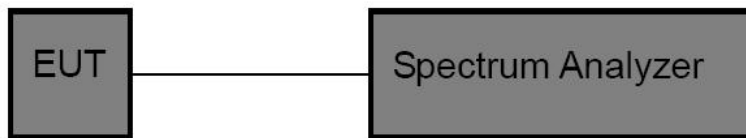
Please refer to Appendix E of the Appendix Test Data.

## 10. 100kHz Bandwidth of Frequency Band Edge Requirement

### 10.1. Test Standard and Limit

Test Standard	FCC Part15 C Section 15.247 (d)
Test Limit	in any 100 kHz bandwidth outside the frequency bands in which the spread spectrum intentional radiator is operating, the radio frequency power that is produced by the intentional radiator shall be at least 20dB below that in the 100kHz bandwidth within the band that contains the highest level of the desired power, In addition, radiated emissions which fall in the restricted bands, as defined in §15.205(a), must also comply with the radiated emission limits specified in 15.209(a).

### 10.2. Test Setup



### 10.3. Test Procedure

The EUT must have its hopping/Non-hopping function enabled. Using the following spectrum analyzer setting:

1. Set the RBW = 100kHz.
2. Set the VBW = 300kHz.
3. Sweep time = auto couple.
4. Detector function = peak.
5. Trace mode = max hold.
6. Allow trace to fully stabilize.

### 10.4. Test Data

Pass

Please refer to Appendix G & Appendix H of the Appendix Test Data.

## 11. Antenna Requirement

### 11.1. Test Standard and Requirement

Test Standard	FCC Part15 Section 15.203 /247(c)
Requirement	<p>1) 15.203 requirement: An intentional radiator shall be designed to ensure that no antenna other than that furnished by the responsible party shall be used with the device. The use of a permanently attached antenna or of an antenna that uses a unique coupling to the intentional radiator, the manufacturer may design the unit so that a broken antenna can be replaced by the user, but the use of a standard antenna jack or electrical connector is prohibited.</p> <p>2) 15.247(c) (1)(i) requirement: Systems operating in the 2400-2483.5 MHz band that is used exclusively for fixed. Point-to-point operations may employ transmitting antennas with directional gain greater than 6dBi provided the maximum conducted output power of the intentional radiator is reduced by 1 dB for every 3 dB that the directional gain of the antenna exceeds 6 dBi.</p>

### 11.2. Antenna Connected Construction

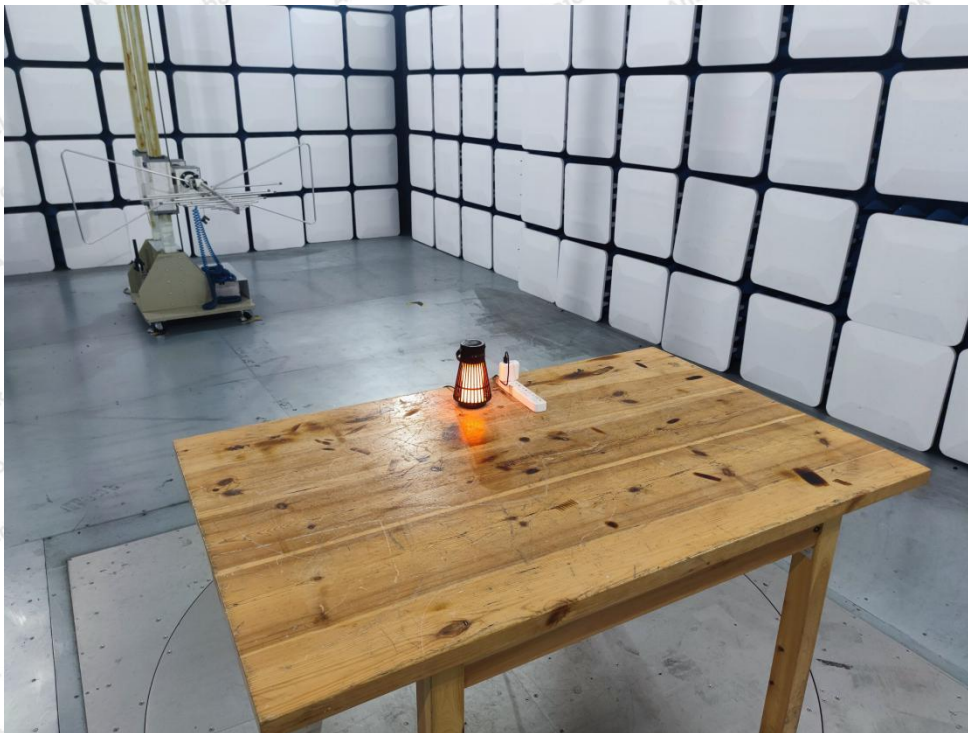
The antenna is PCB Antenna which permanently attached, and the best case gain of the antenna is 0 dBi. It complies with the standard requirement.

## APPENDIX I -- TEST SETUP PHOTOGRAPH

Photo of Conducted Emission Measurement



Photo of Radiation Emission Test



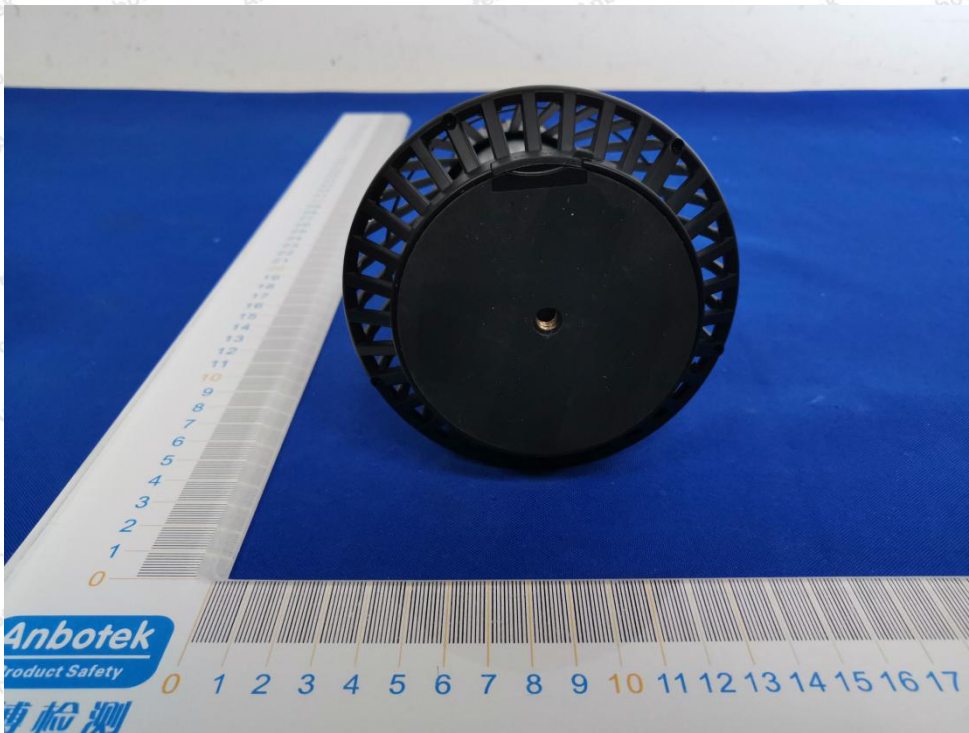
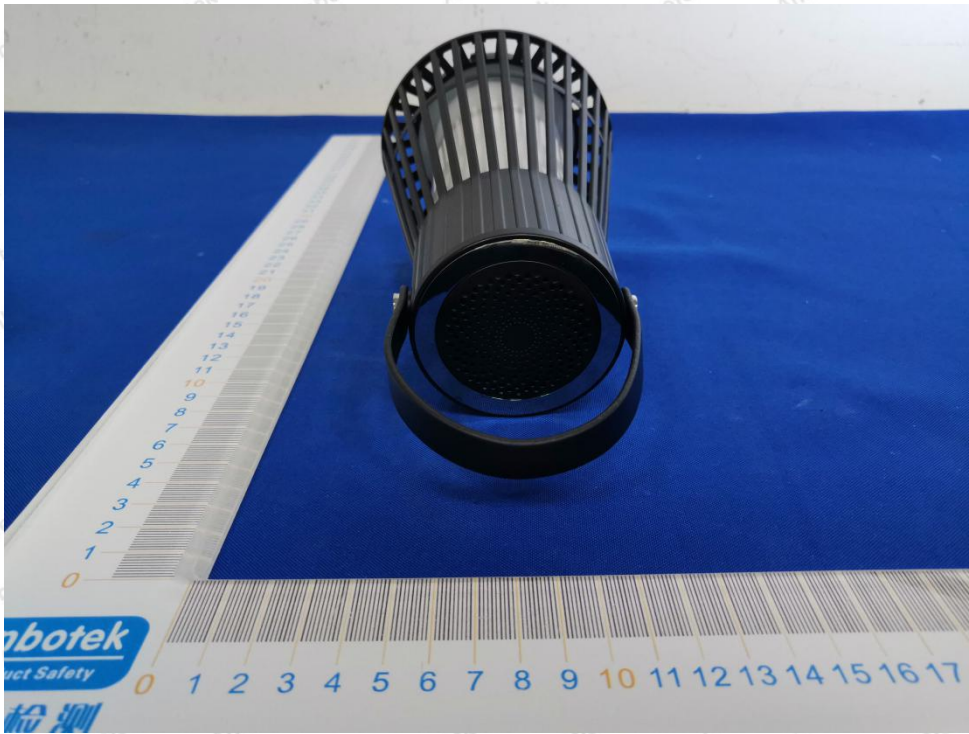




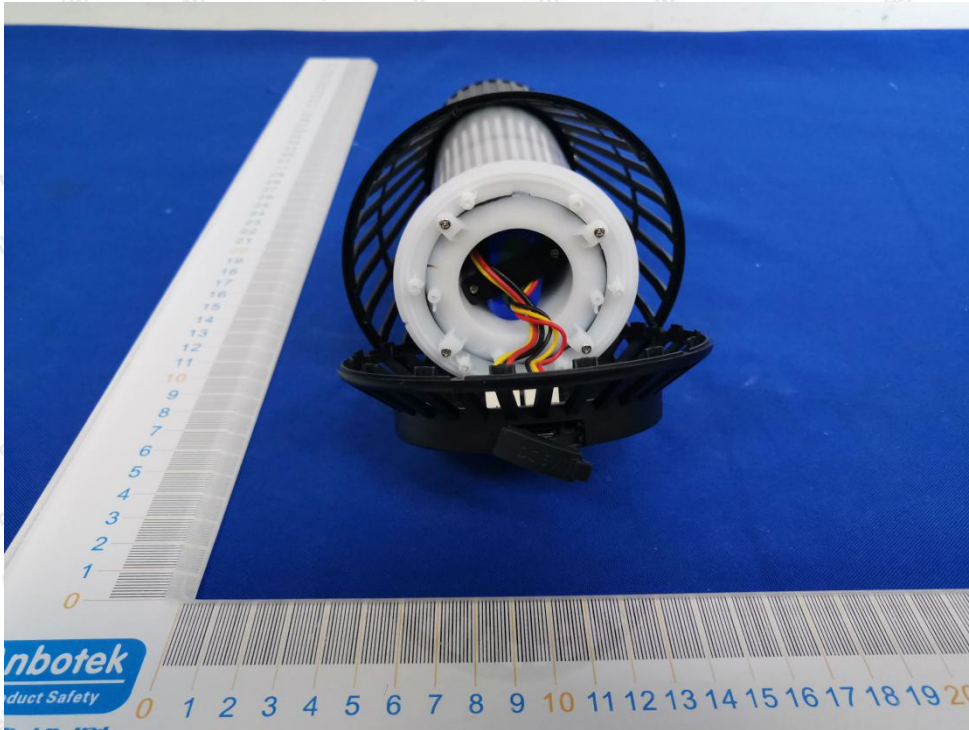
## APPENDIX II -- EXTERNAL PHOTOGRAPH

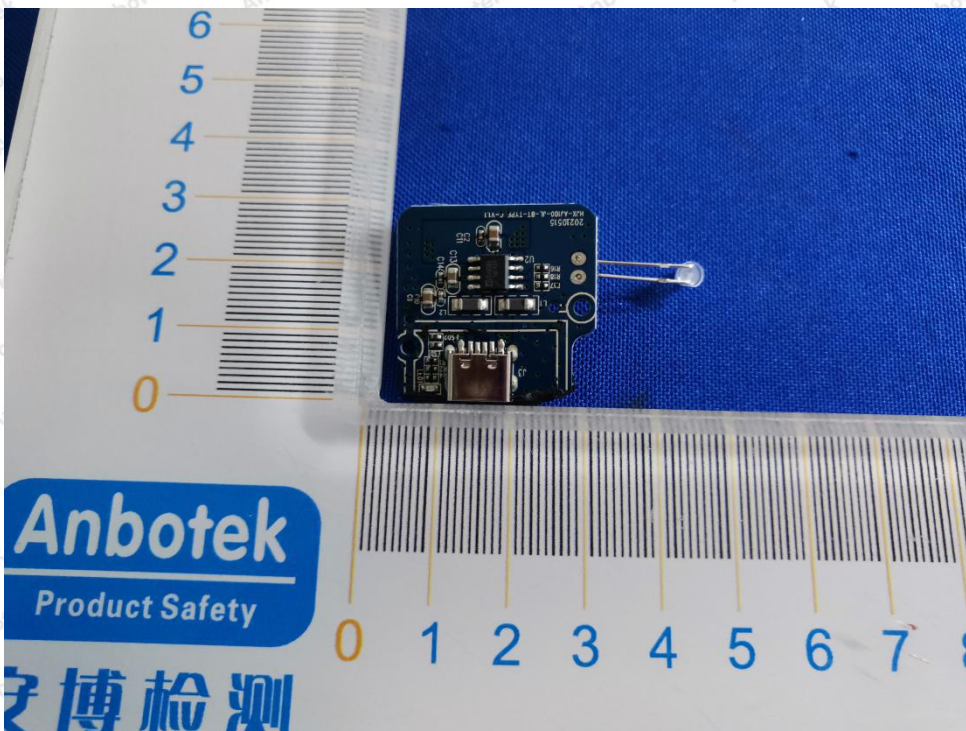
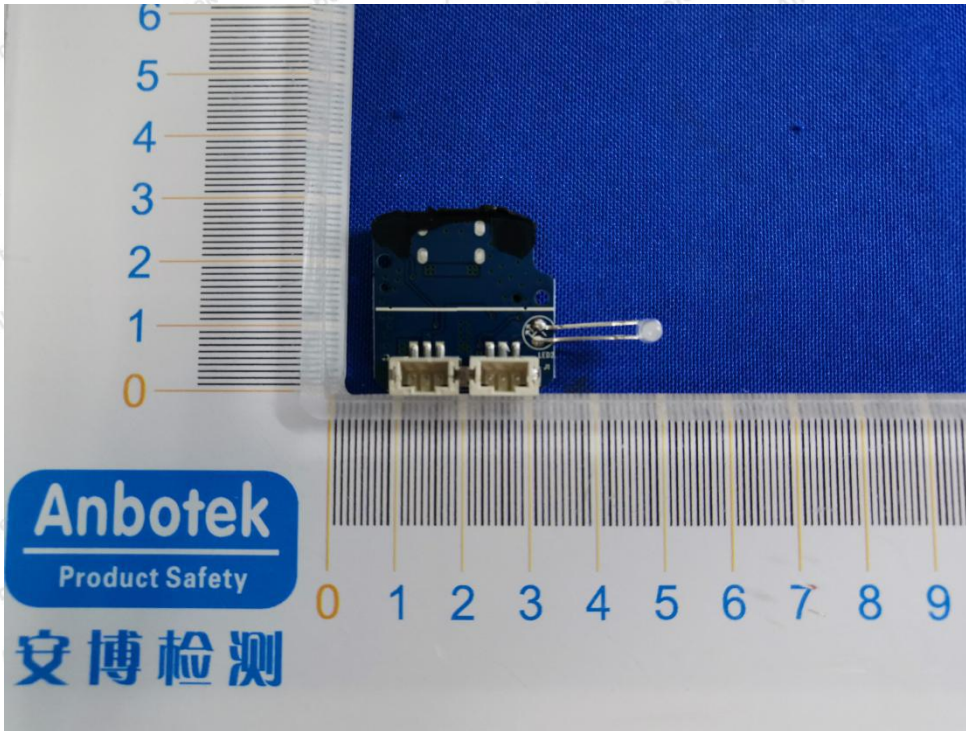


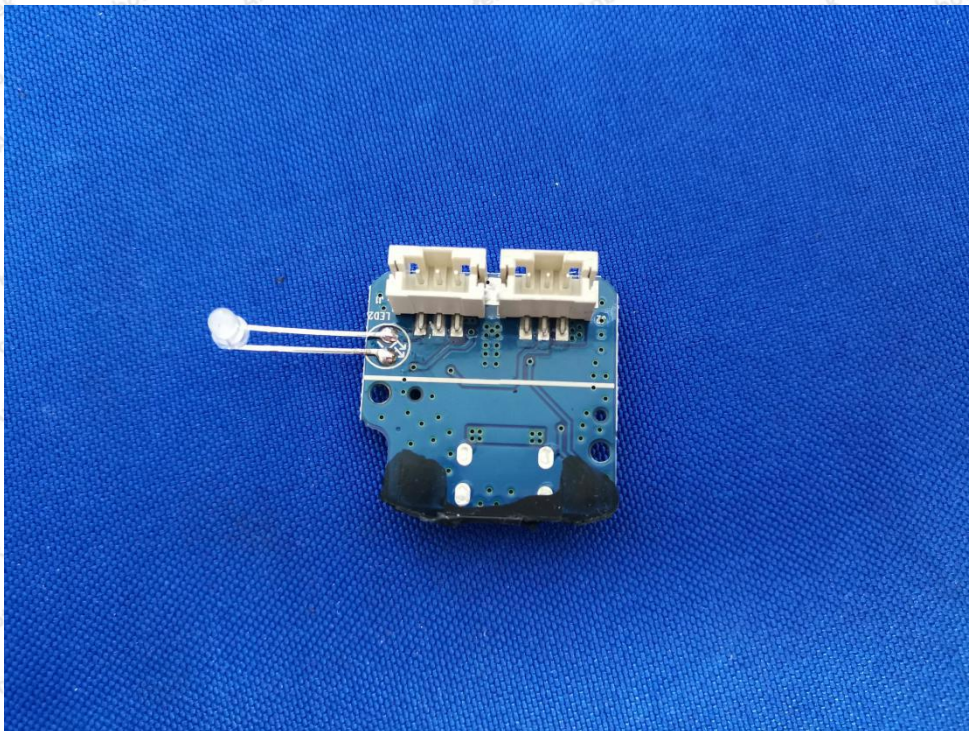
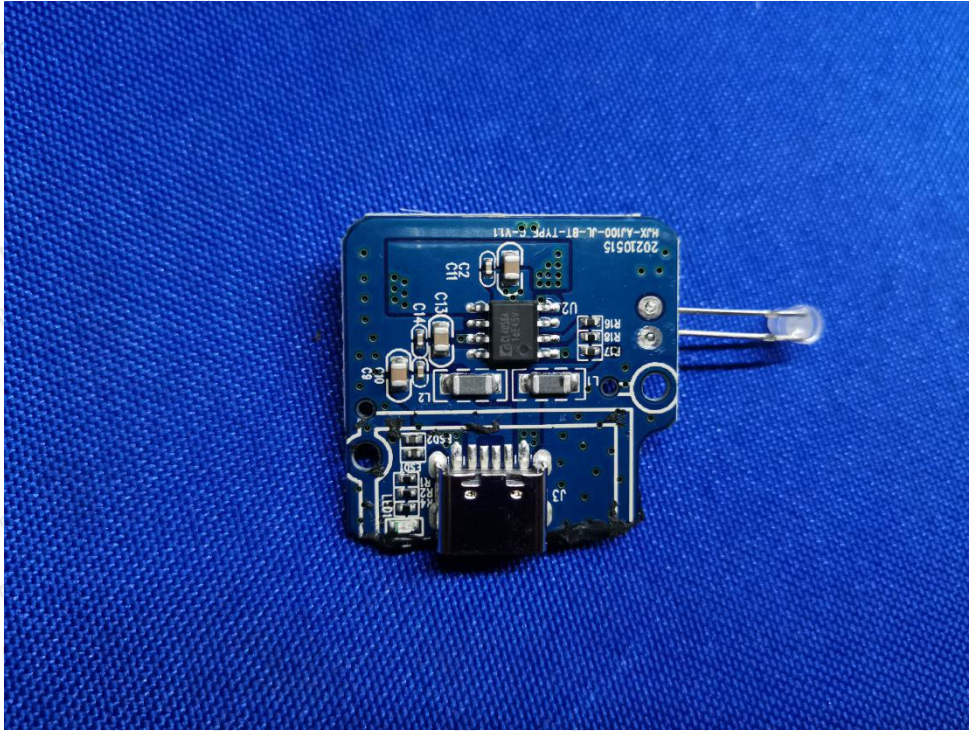


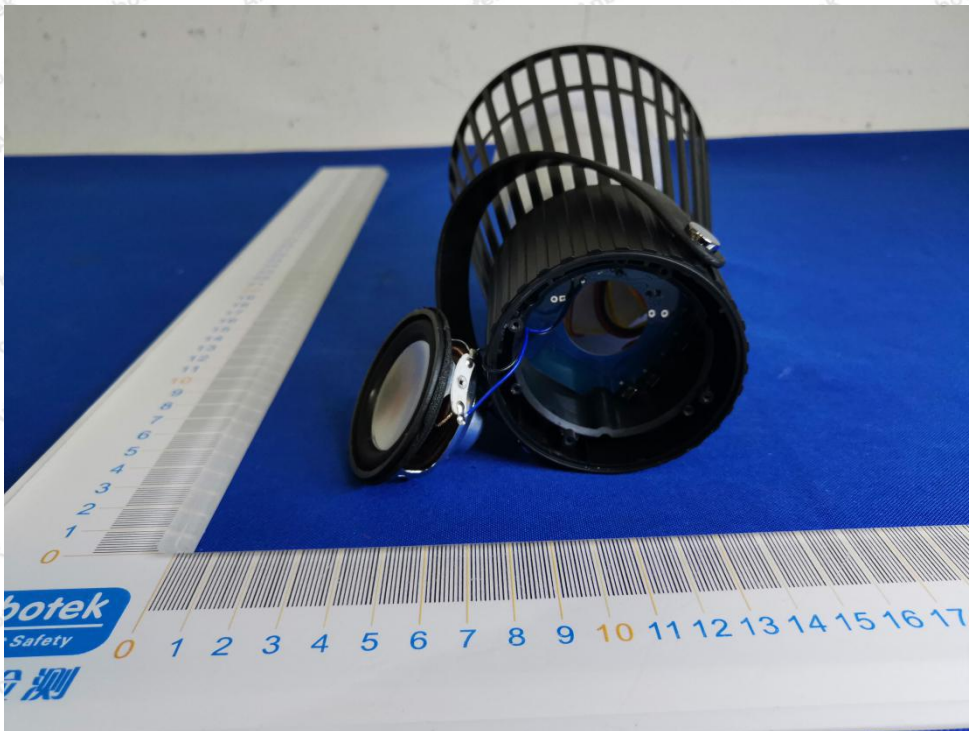
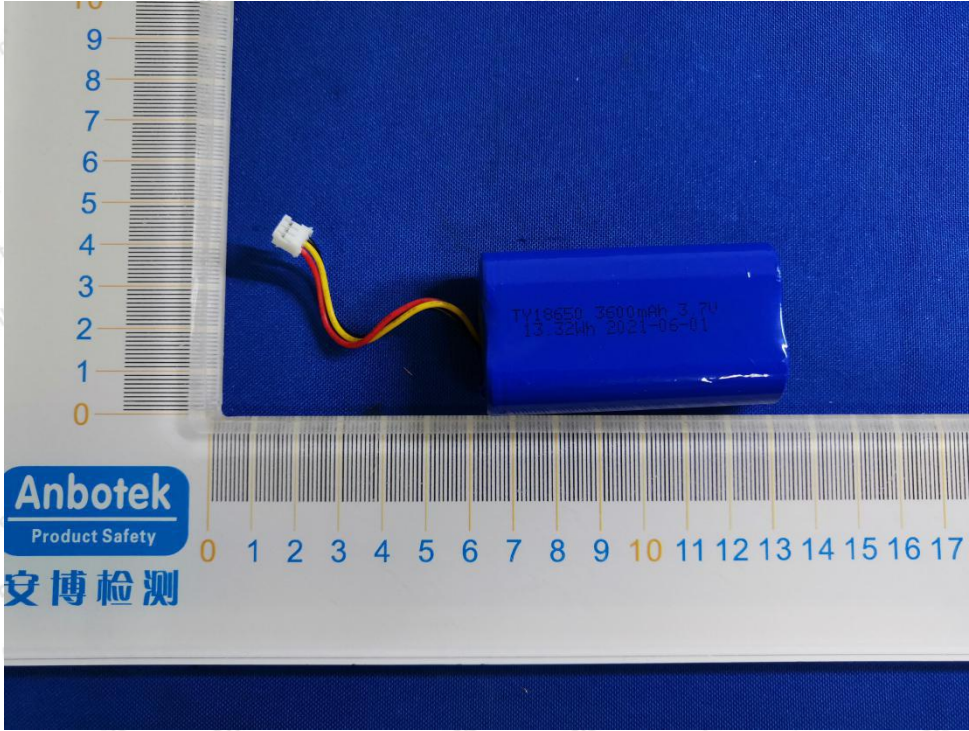


### APPENDIX III -- INTERNAL PHOTOGRAPH

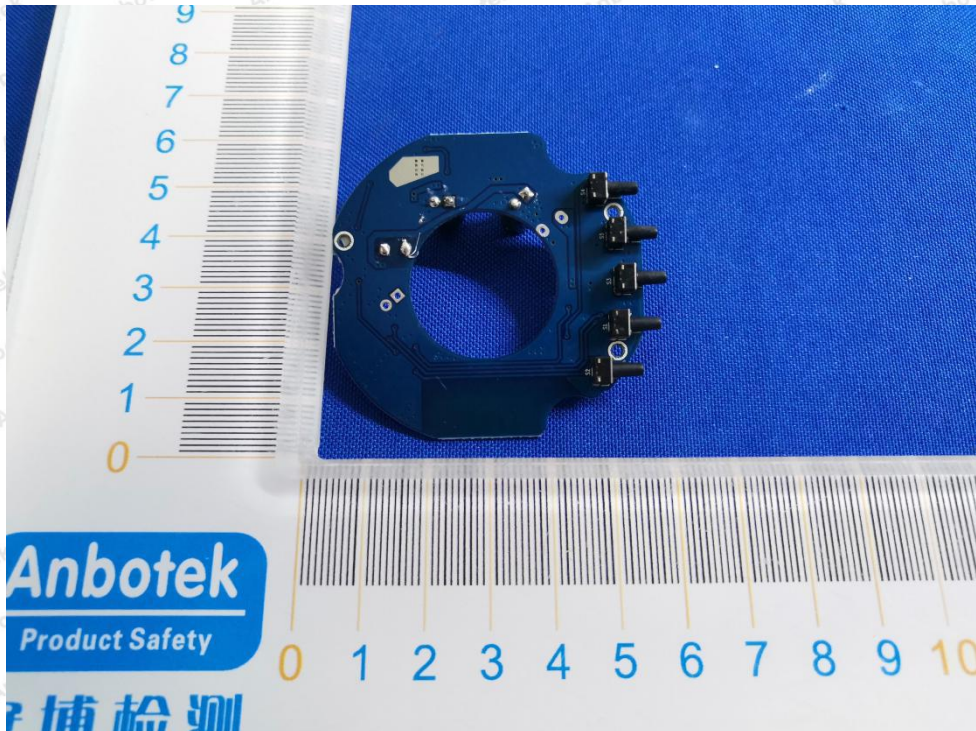
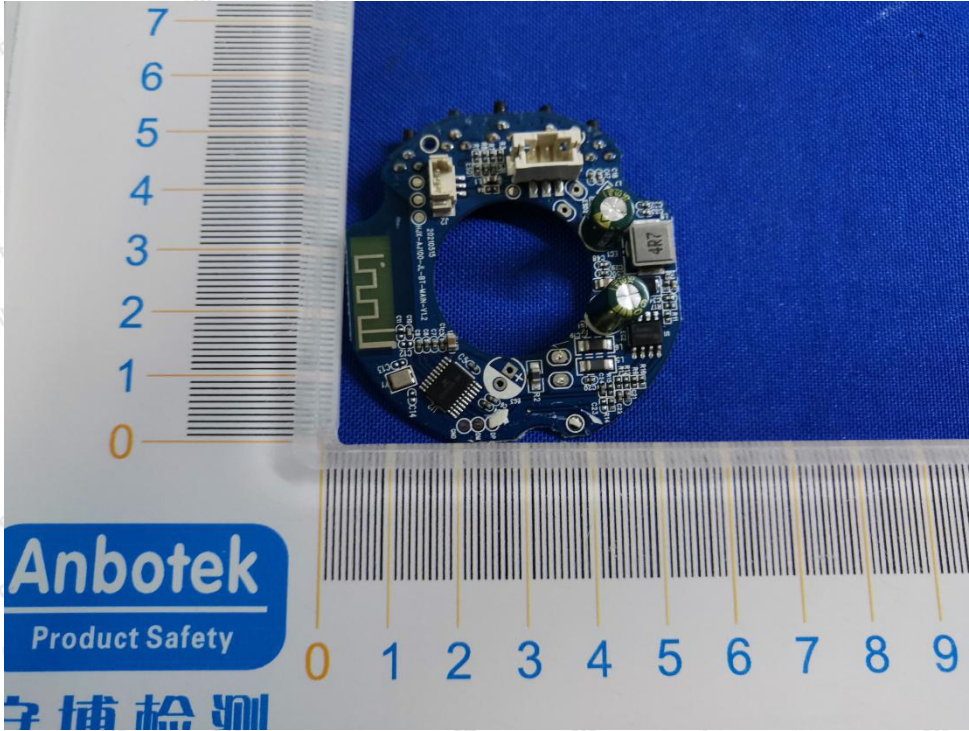


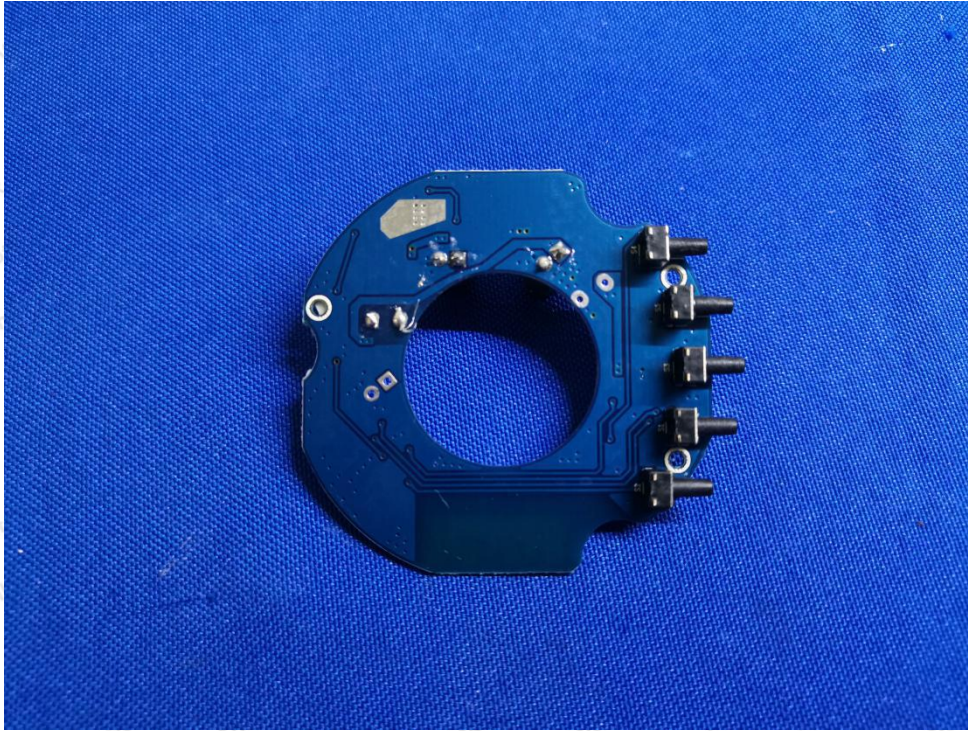




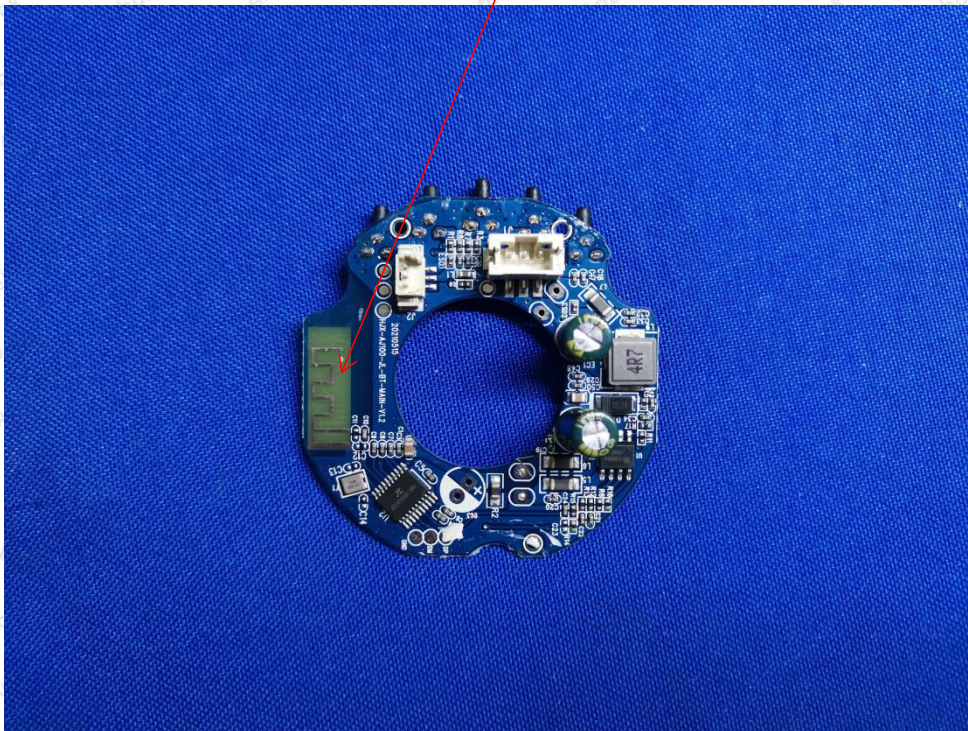








ANT



## APPENDIX IV – Appendix Test Data