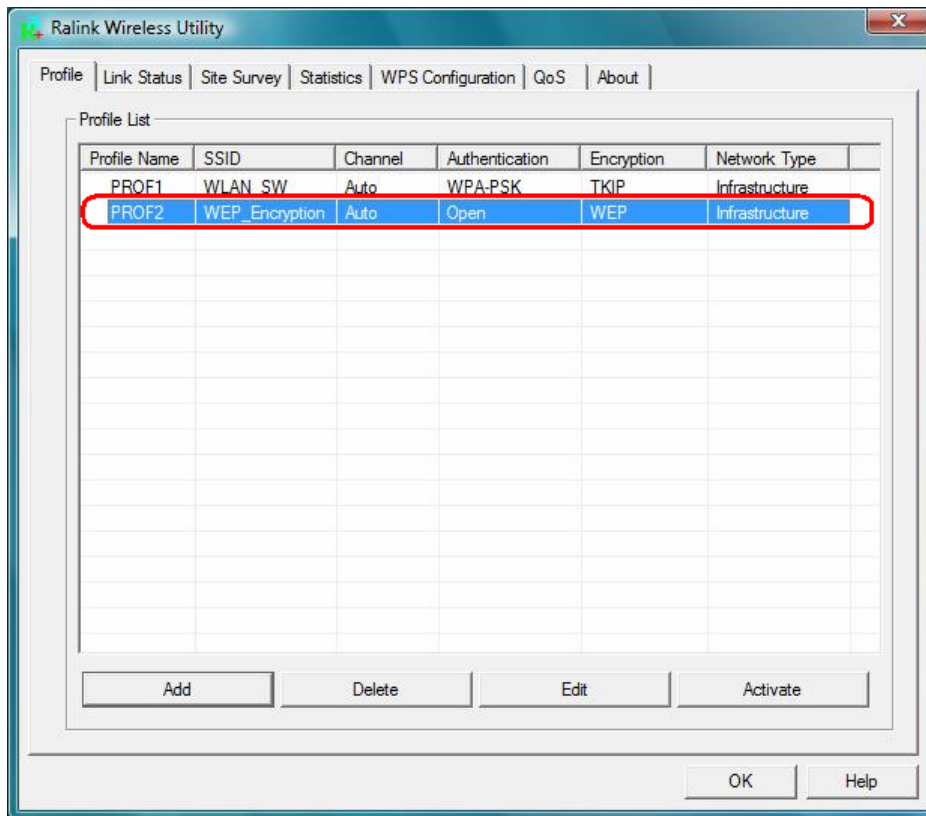


Step 4 –After the profile is saved, click the “**Activate**” button on Profile Page to activate the profile.

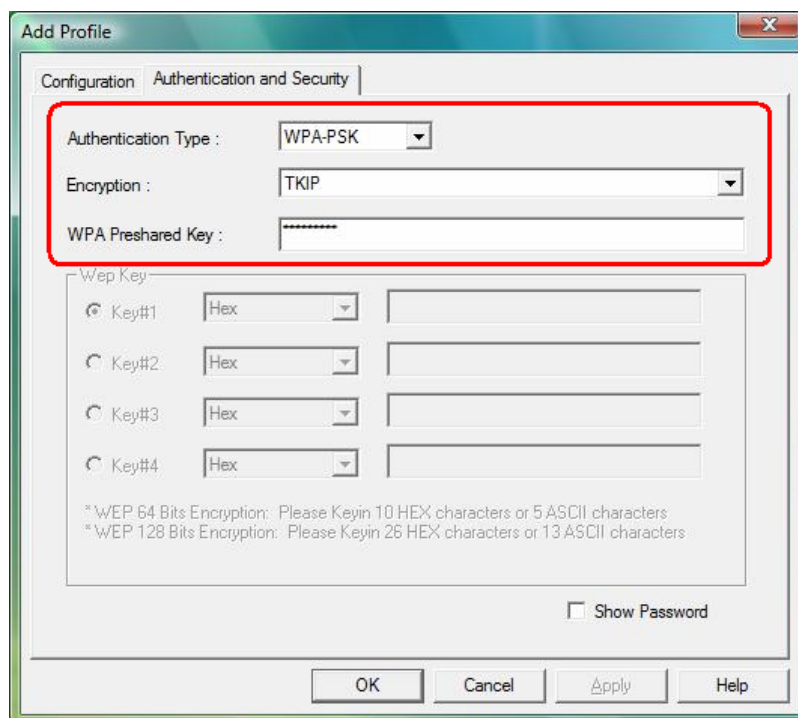


④ **Example 3: WPA-PSK/WPA2-PSK**

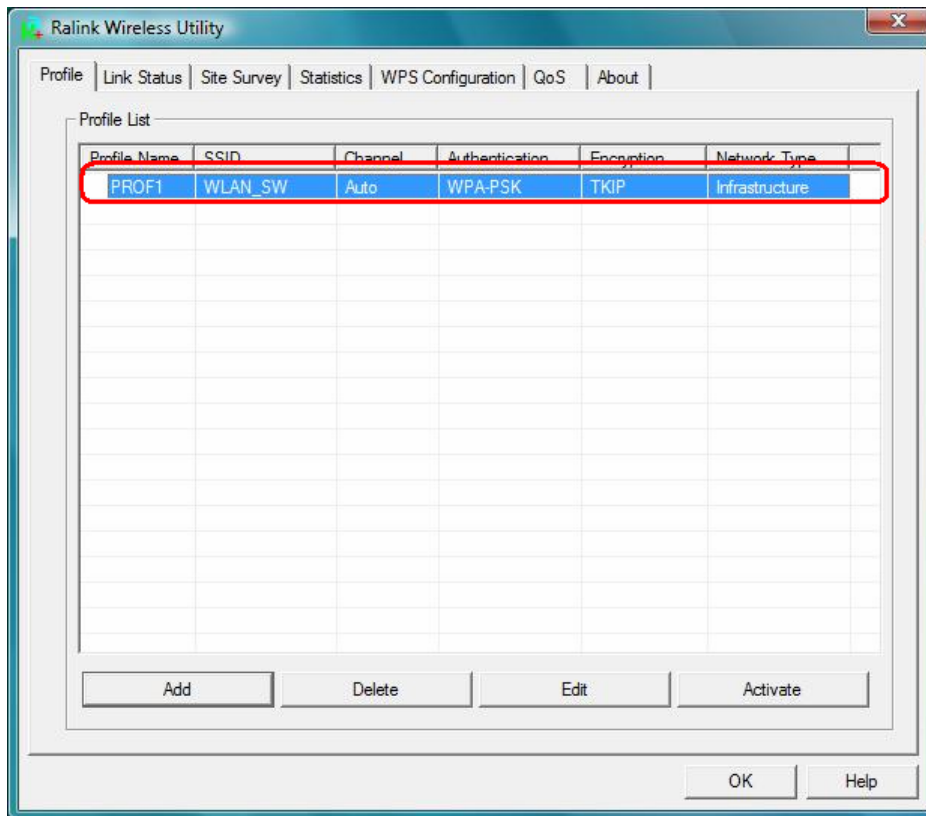
Step 1 – Choose “**WPA-PSK**” or “**WPA2-PSK**” authentication type

Step 2 – Choose “**TKIP**” or “**AES**” encryption type

Step 3 –Enter the pre-shared KEY



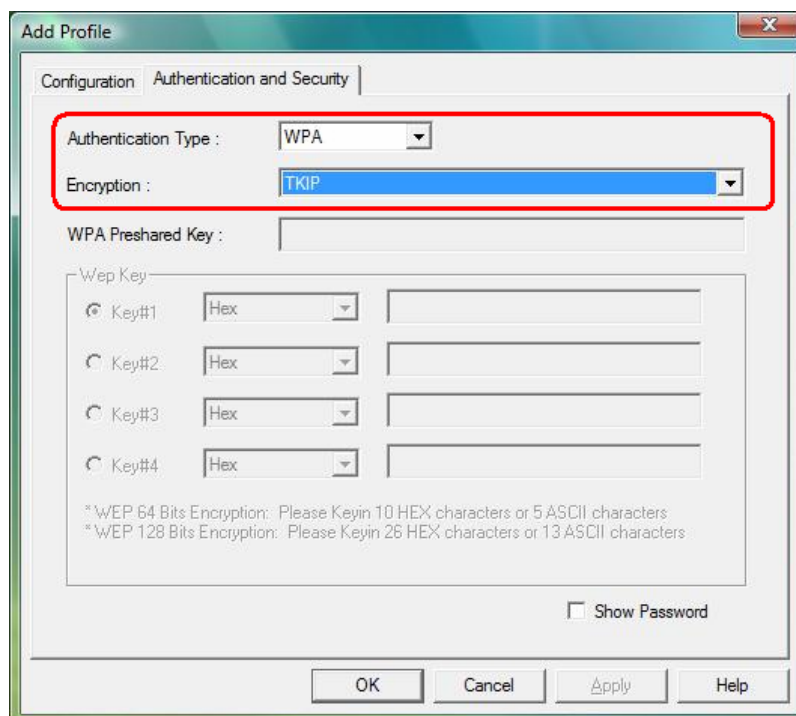
Step 4 –After the profile is saved, click the **“Activate”** button on Profile Page to activate the profile.



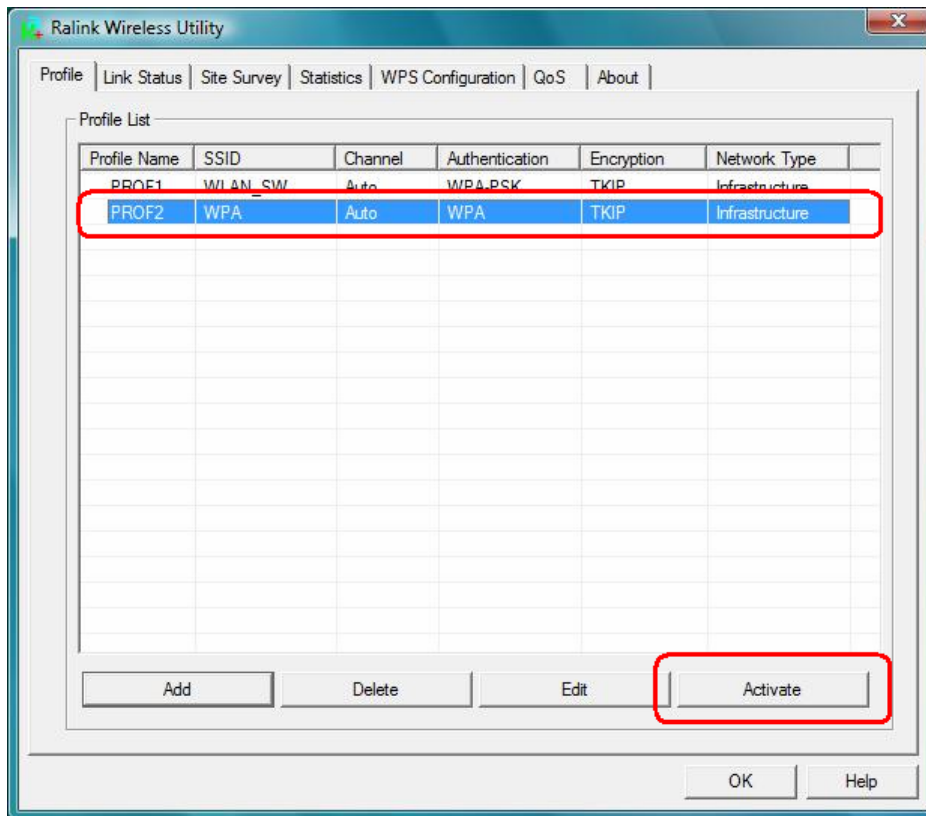
④ **Example 4:WPA/WPA2**

Step 1 – Choose **“WPA”** or **“WPA2”** authentication type

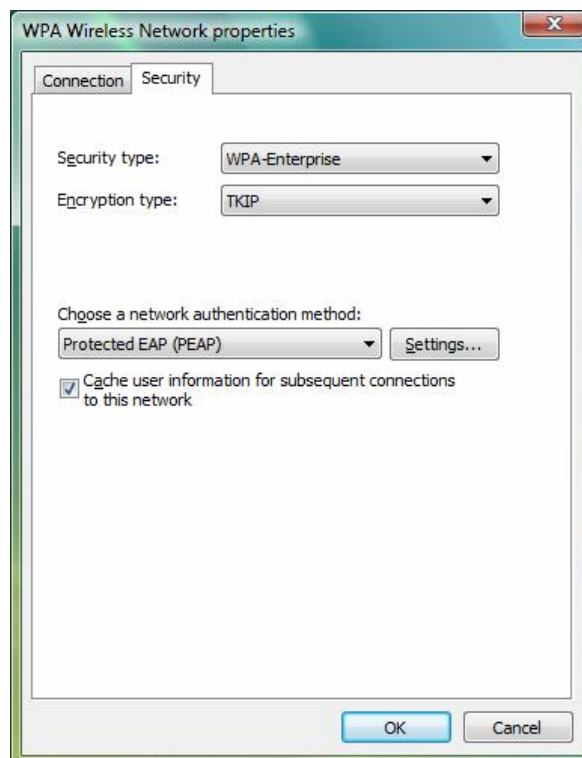
Step 2 – Choose **“TKIP”** or **“AES”** encryption type



Step 3 –After the profile is saved, click the “**Activate**” button on Profile Page to activate the profile.

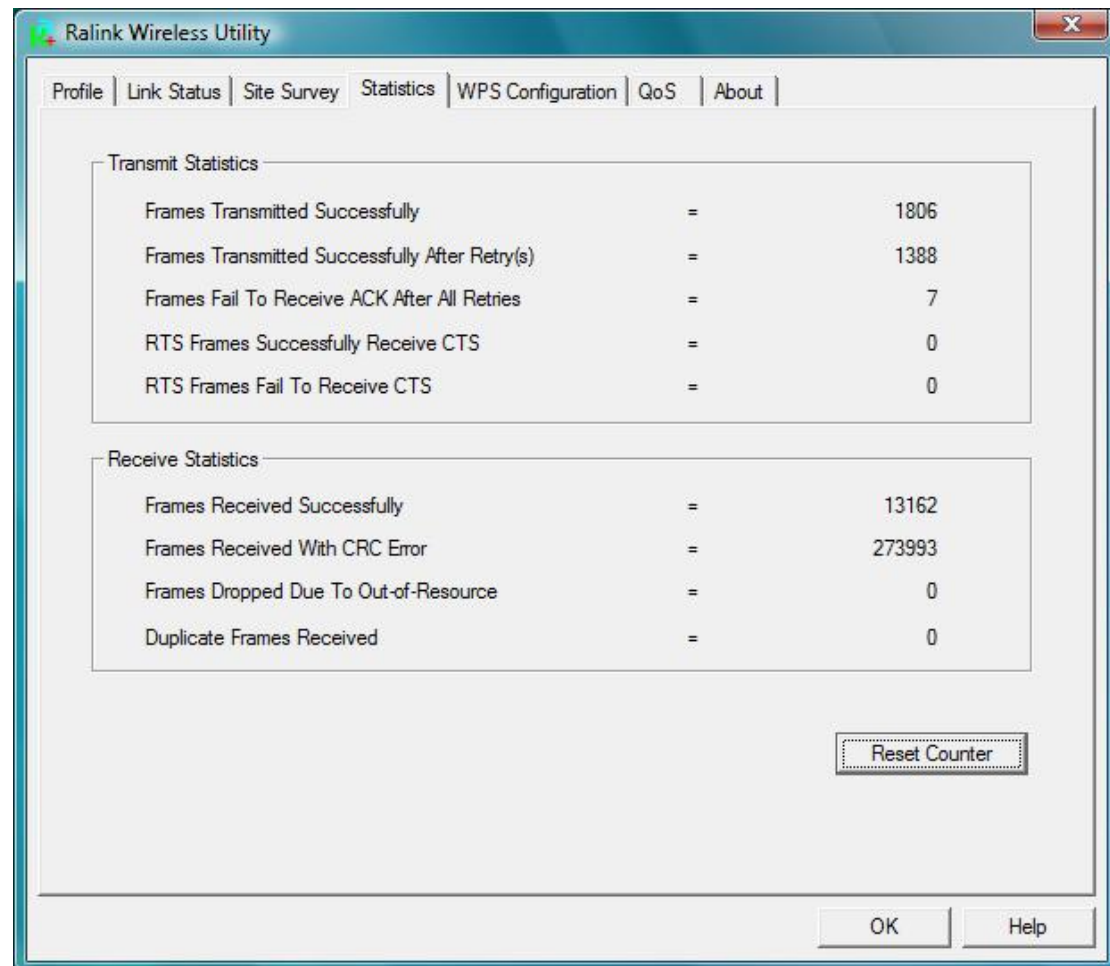


Step 4 –The Windows profile setting dialog is popped-up for user to modify.



3.2.4 Statistics

Statistics page displays the detail counter information based on 802.11 MIB counters. This page translates the MIB counters into a format easier for user to understand. You may reset the counters to Zero by clicking “**Reset Counter**”.



[Transmit Statistics]

Frames Transmitted Successfully: Frames successfully sent

Frames Transmitted Successfully After Retry: Frames sent successfully with retry.

Frames Fail to Receive ACK After All Retries: Frames failed transmit after hitting retry limit.

RTS Frames Successfully Receive CTS: Successfully receive CTS after sending RTS frames.

RTS Frames Fail To Receive CTS: Failed to receive CTS after sending RTS frames.

[Receive Statistics]

Frames Received Successfully: Frames received successfully.

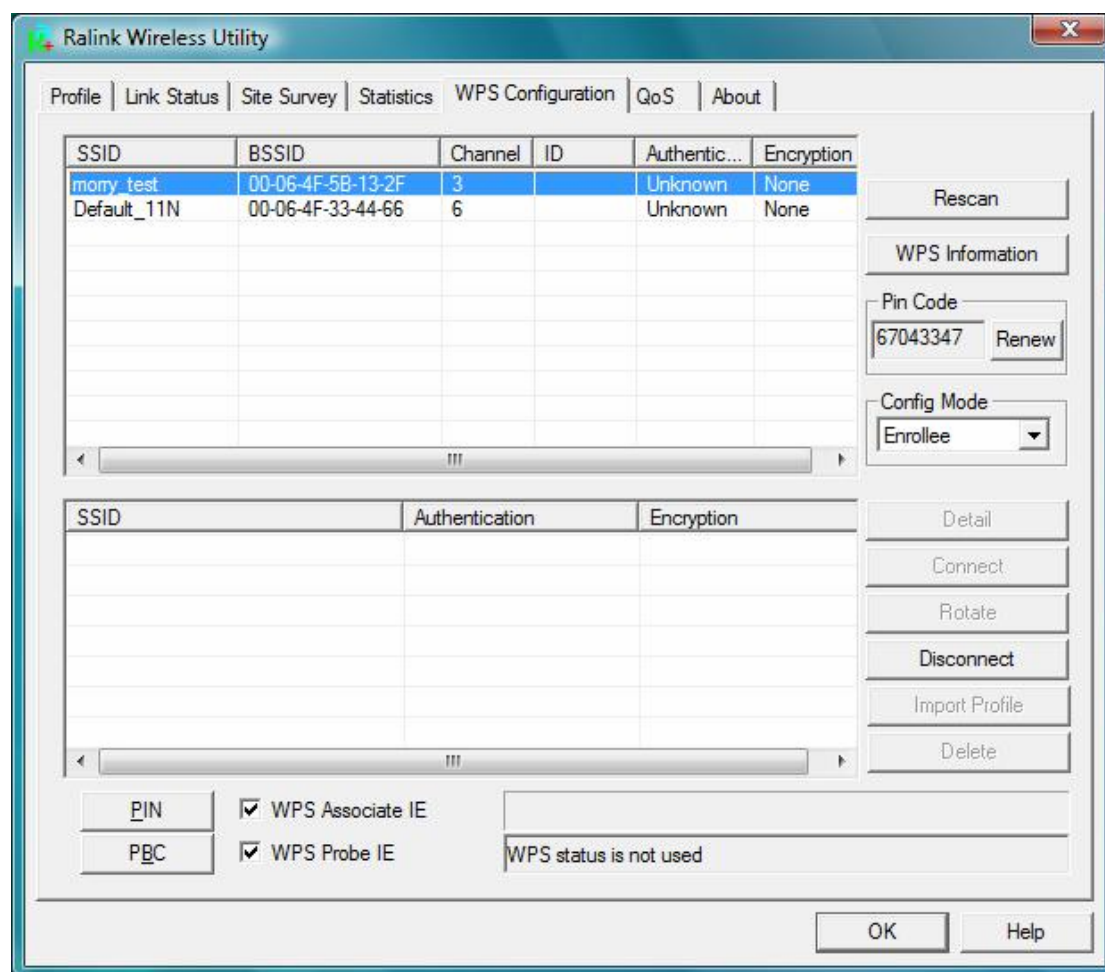
Frames Received with CRC Error: Frames received with CRC error.

Frames Dropped Due to Out-of-Resource: Frames dropped due to resource issue.

Duplicate Frames Received: Duplicate received frames.

3.2.5 WPS Configuration

The primary goal of Wi-Fi Protected Setup (Wi-Fi Simple Configuration) is to simplify the security setup and management of Wi-Fi Networks.



WPS Associate IE: If the “WPS Associate IE” option is checked, station will send the association request with WPS IE during WPS setup.

WPS Probe IE: If the “WPS Probe IE” option is checked, station will send the probe request with WPS IE during WPS setup.

[Display WPS capable AP information]

The WPS capable AP information is listed in the upper frame, and the display AP’s characters are SSID, BSSID, current operating channel, device password ID, authentication type, and encryption type.

Re-Scanning: Clicking “re-scan” button performs the re-scanning action.

WPS AP Information: Clicking the “WPS information” button brings up the WPS capable AP information dialog.

- **Authentication Type:** there are three type of supported authentication modes, and there are Open, Shared, WPA-PSK and WPA modes.

- **Encryption Type:** For **Open & Shared** authentication modes, the available encryption types are **None** and **WEP**. For **WPA, WPA2, WPA-PSK** and **WPA2-PSK** authentication modes, the available encryption types are **TKIP** and **AES**.
- **Config Methods:** This attributes contains the config methods supported and enabled by the selected Registrar.
- **Device Password ID:** Device Password ID indicates the method or identifies the specific password that the selected Registrar intends to use.
- **Selected Registrar:** Selected Registrar indicates if the user has recently activated a Registrar to add an Enrollee.
- **State:** This attribute is used to indicate the current configuration state. This attribute is either “**Un-Configured**” or “**Configured**”.
- **Version:** This attribute is the specified WPS version.
- **AP Setup Locked:** AP Setup Locked indicates if AP has entered a setup locked state.
- **UUID-E:** UUID-E is the universally unique identifier (UUID) generated by the Enrollee.
- **RF-Bands:** RF Bands indicate the available RF bands.

[Configure WPS Profiles]

The user can configure WPS profile with either PIN method or PBC method.

- **PIN Method:**
 - Step 1 → The Registrar enters the pin code generated by station.
 - Step 2 → Click the “PIN” button.
- **PBC Method:**
 - Step 1 → Click the “PBC” button within 2 second while the Registrar clicks the button.

[Manage WPS Profiles]

The Received WPS profiles are listed in the lower frame, and the listed WPS profile attributes are SSID, MAC address, authentication type, and encryption type.

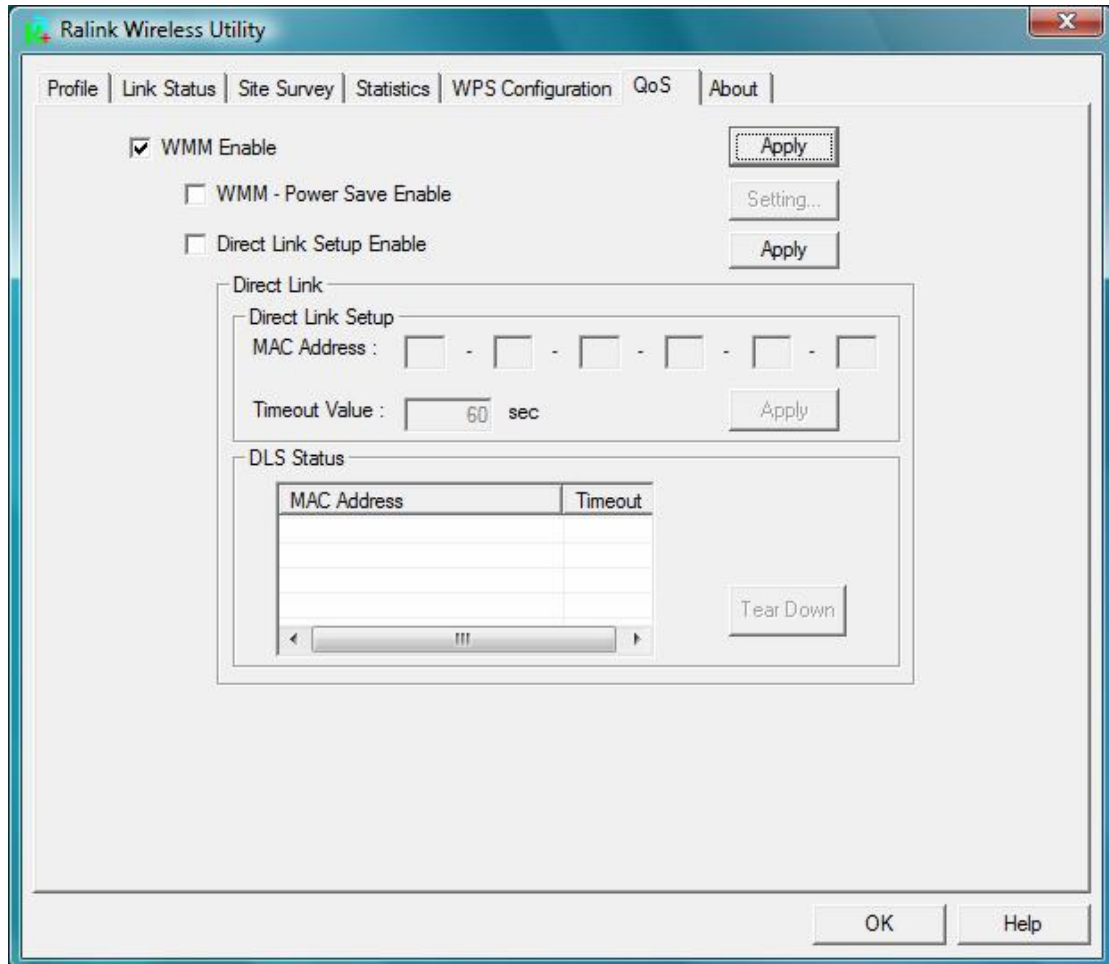
- **WPS profile detail information:** Selecting a profile then clicking the “Detail” button brings up the WPS profile detail information dialog.
- **Connect with WPS Profile:** Clicking the “Connect” button will connect to AP with the select WPS profile.
- **Rotate WPS profile:** If there are more than two WPS profiles, clicking the “Rotate” button will rotate to next profile and connect to AP with this profile. If the connection can’t be made successfully, station will perform the WPS profile rotation repeatedly.
- **Disconnect from WPS AP:** Clicking the “Disconnect” button will stop the WPS

connection.

- Delete WPS profile: Clicking the “Delete” button will delete the selected WPS profile.

3.2.6 QoS

The QoS Page of RaConfig. It involves “WMM Enable”, “WMM – Power Save Enable” and “DLS setup Enable”.

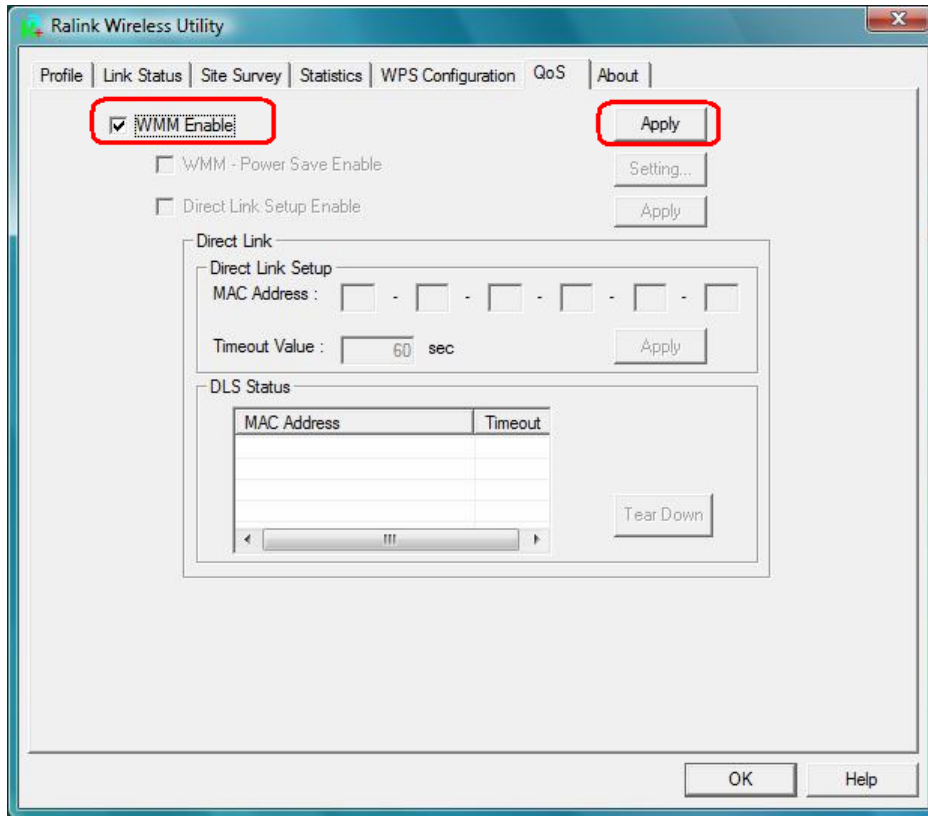


⊙ Configure to enable Wi-Fi Multi-Media

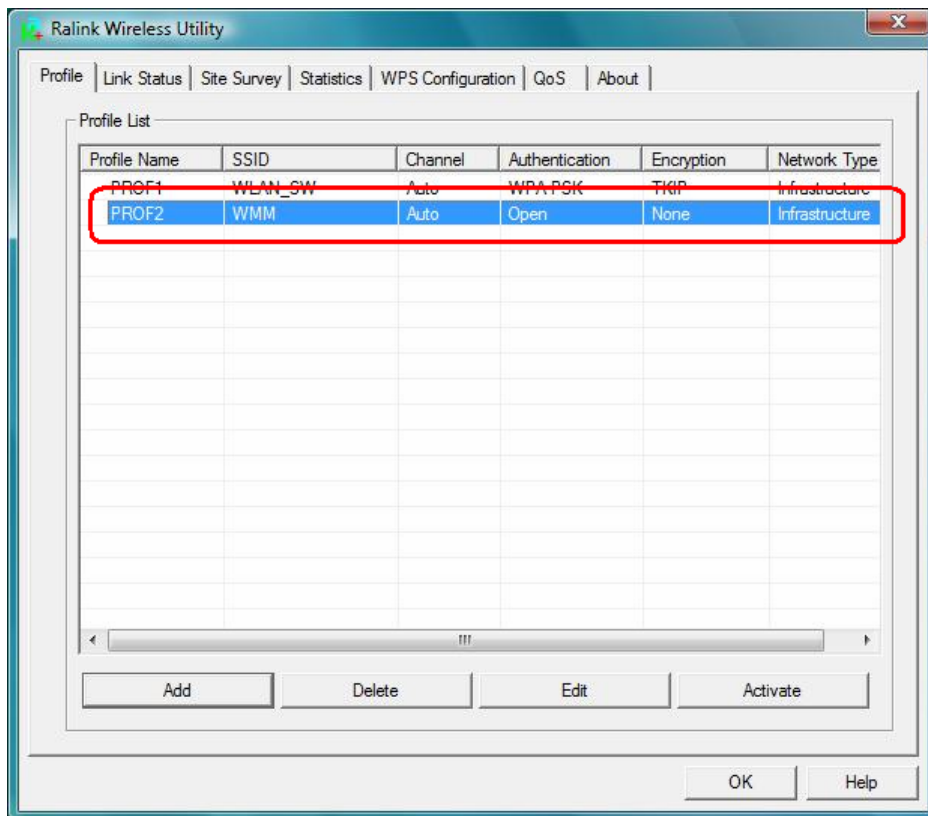
If you want to use “WMM – Power Save” or “Direct Link”, you must enable WMM. The setting method of enabling WMM indicates as follows:

Step1: Click “WMM Enable”

Step2: Click “Apply”.

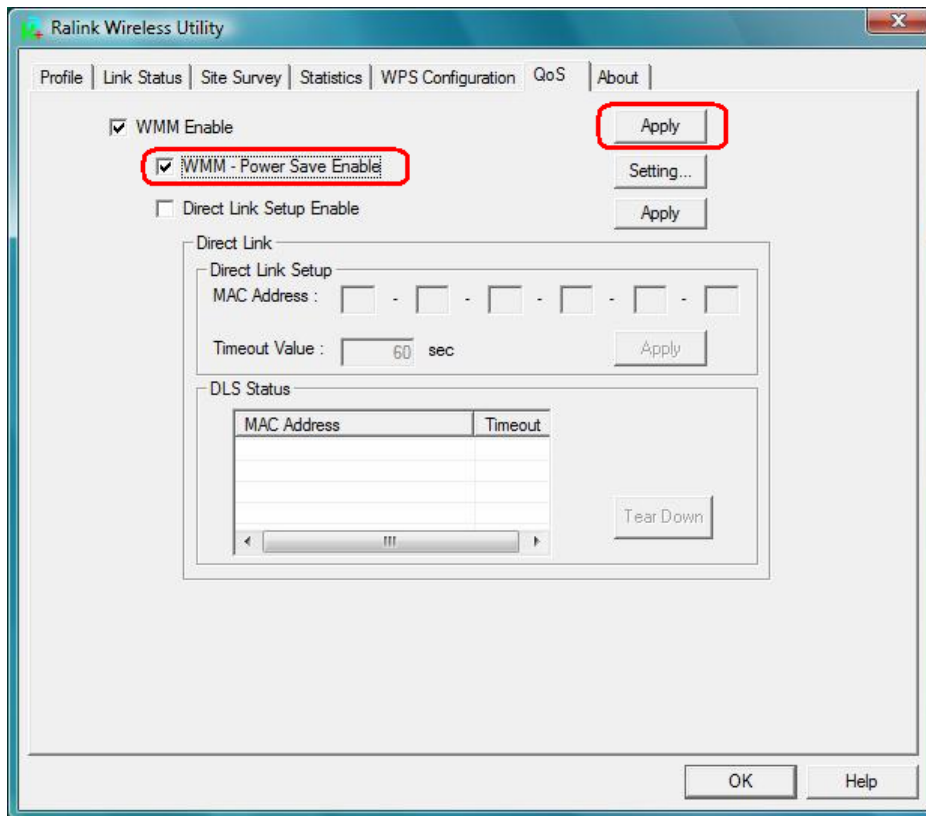


Step3: Change to “**Site Survey Page**”. And add an AP that supports WMM features to a Profile. The result will look like the below figure in Profile page.

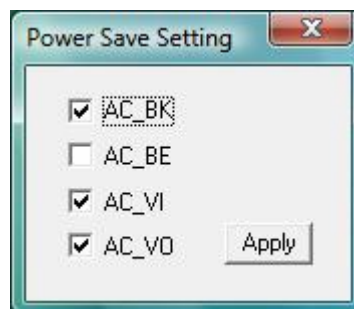


① Enable WMM – Power Save

Step1: Click “WMM – Power Save Enable”. And Click “Setting...” button.

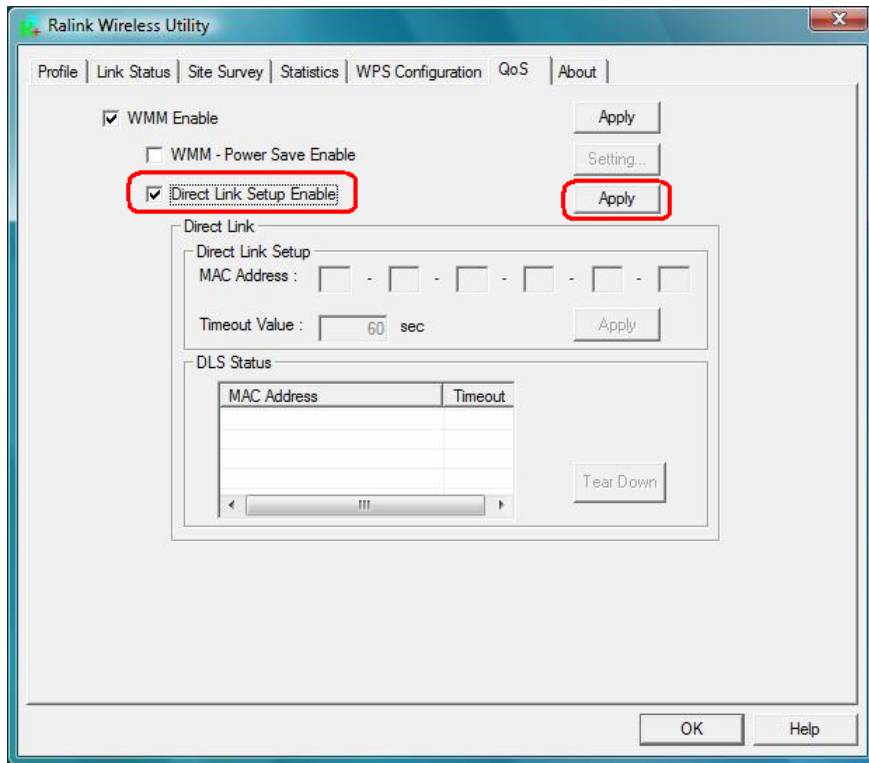


Step2: After clicking “Setting...” button, show “Power Save Setting” dialog. Please select which ACs you want to enable. Then click “Apply” button. The setting of enabling WMM – Power Save is successfully.

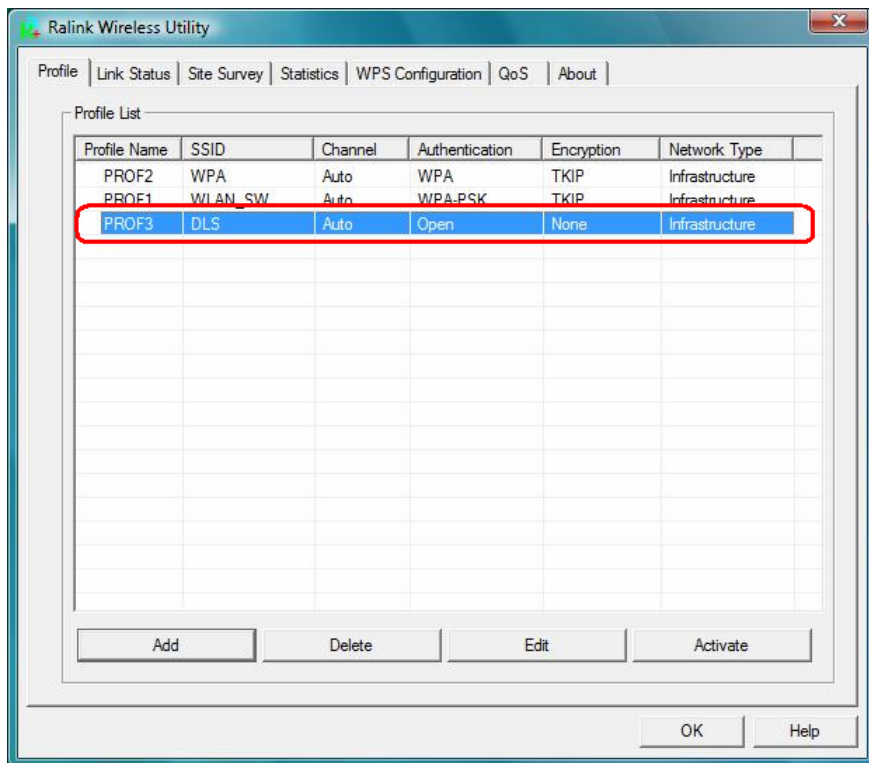


① Enable DLS (Direct Link Setup)

Step1: Click “Direct Link Setup Enable”. And Click “Apply” button



Step2: Change to “Site Survey Page”. And add an AP that supports DLS features to a Profile. The result will look like the below figure in Profile page.

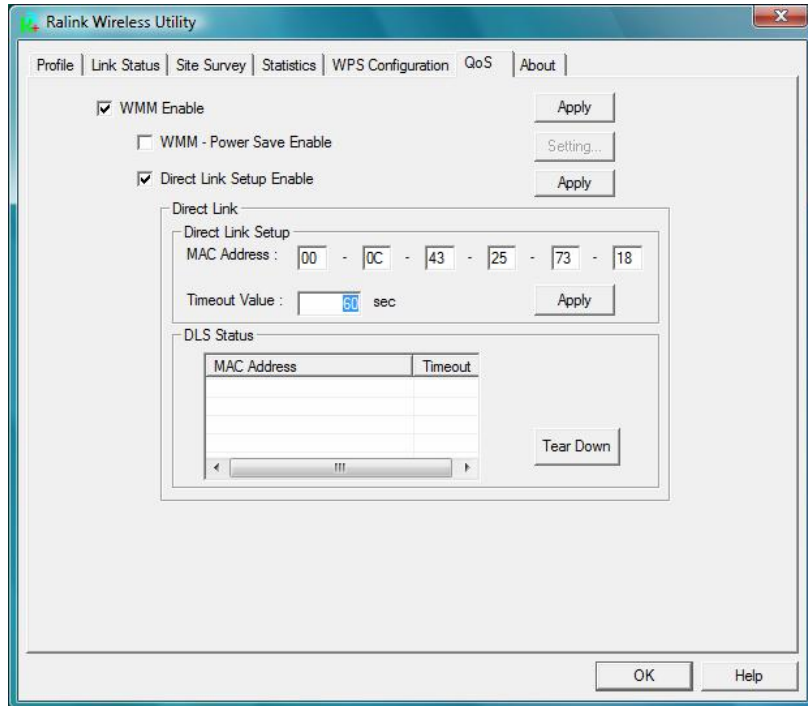


The Setting of DLS indicates as follow:

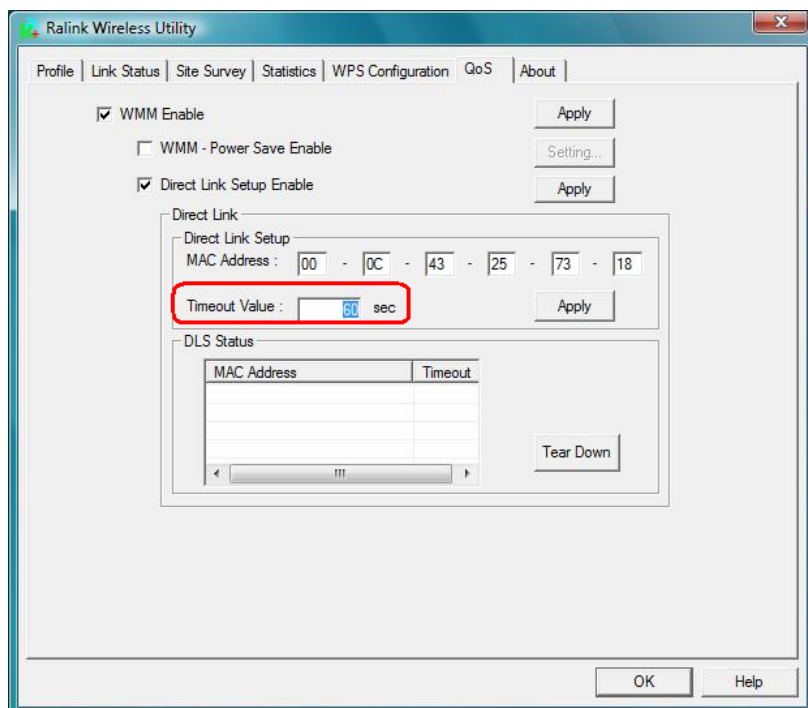
1. Fill in the blanks of Direct Link with **MAC Address** of STA. The STA must conform to two conditions as follow:

Step1: Connect with the same AP that support DLS features.

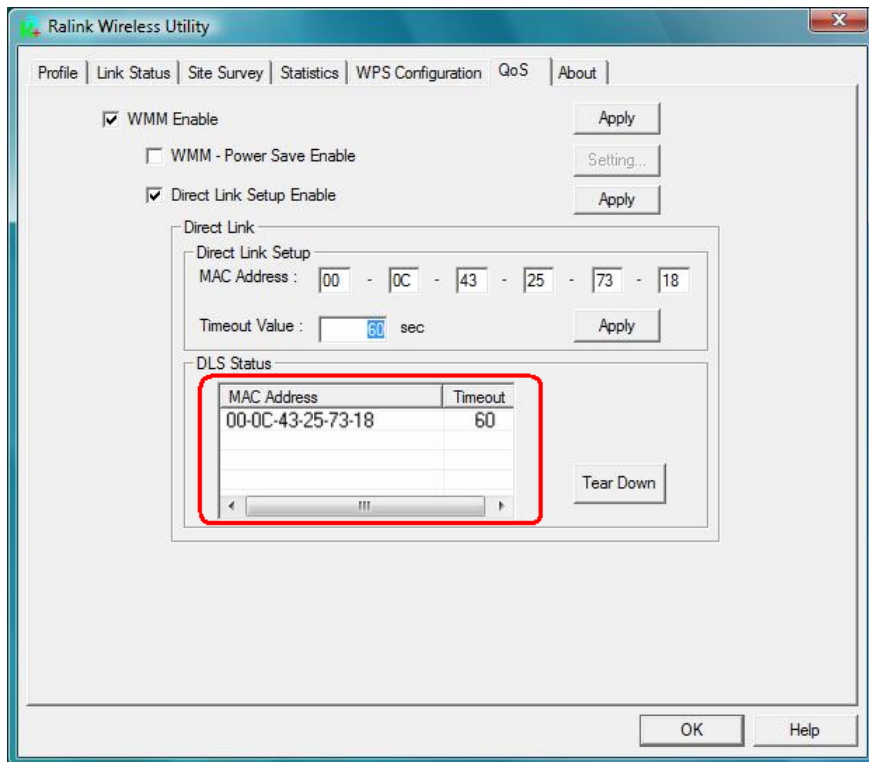
Step2: Have to enable DLS.



2. **Timeout Value** represents that it disconnect automatically after some seconds. The value is integer. The integer must be between 0~65535. It represents that it always connects if the value is zero. Default value of Timeout Value is 60 seconds



3. Click “Apply” button. The result will look like the below figure.

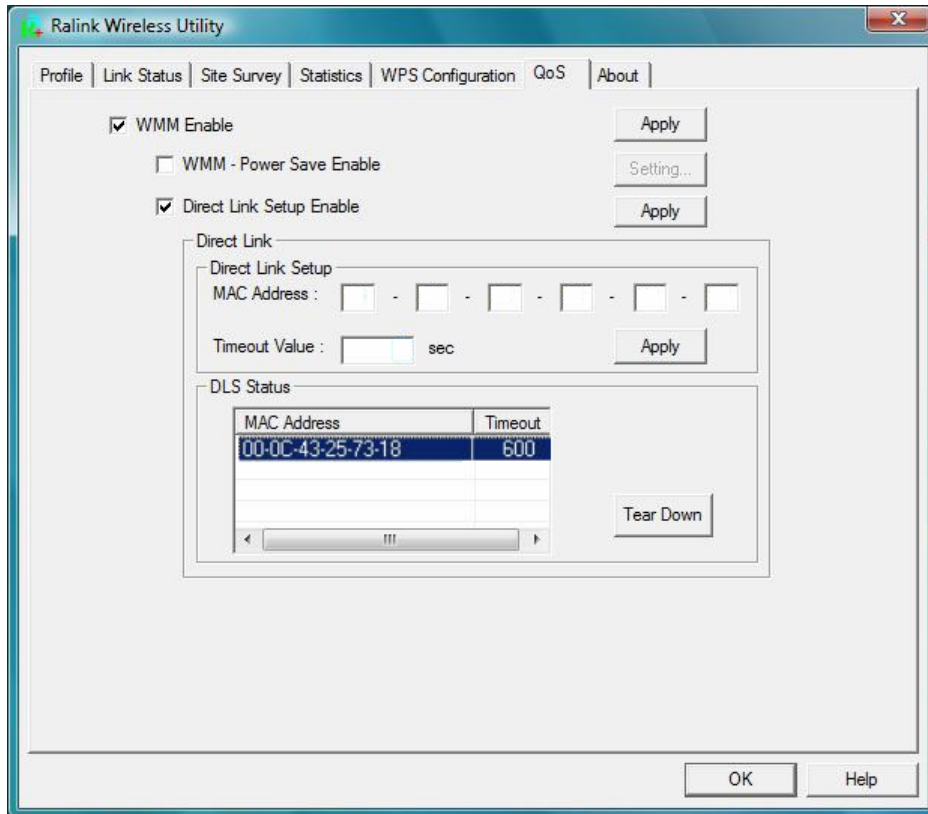


Describe “DLS Status” as follow:

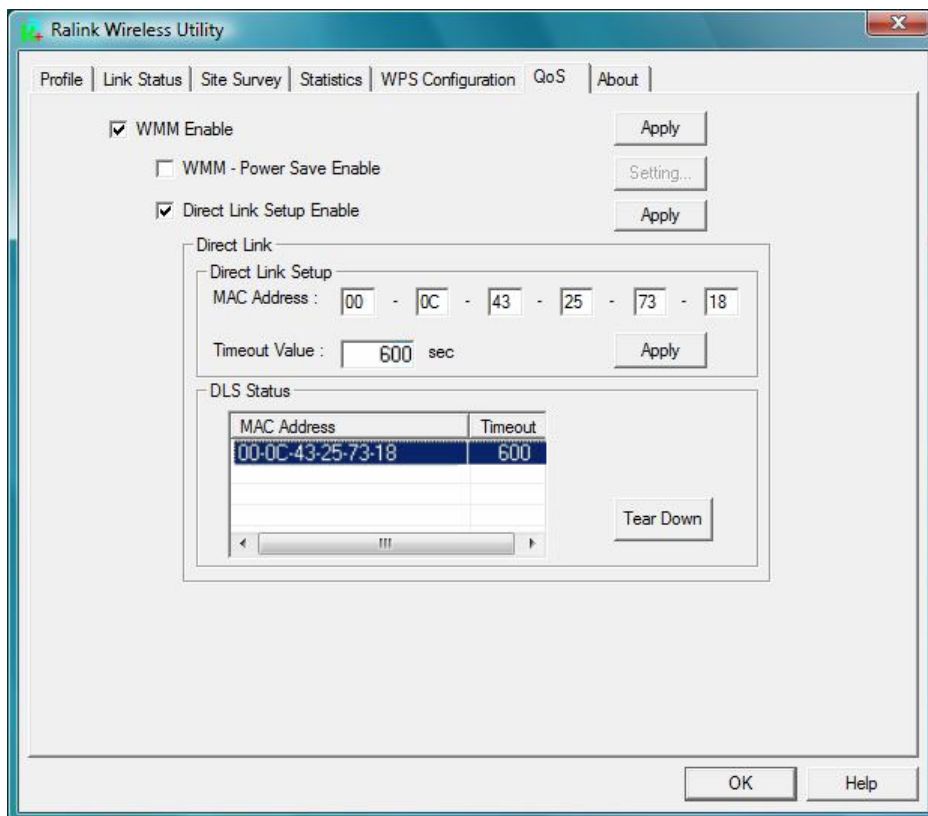
1. As the up figure, after configuring DLS successfully, show MAC address of the opposite side and Timeout Value of setting in “DLS Status”. In “DLS Status” of the opposite side, it shows MAC address of myself and Timeout Value of setting.

2. Display the values of “DLS Status” to “Direct Link Setup” as follow:

Step1: In “DLS Status”, select a direct link STA what you want to show it’s values in “Direct Link Setup”.

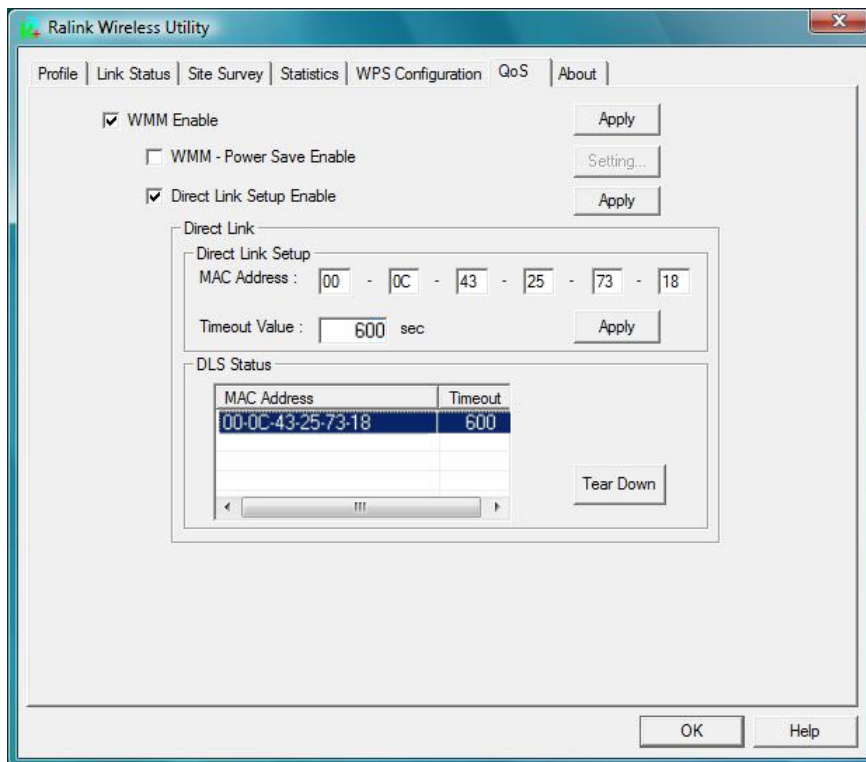


Step2: Double click. And the result will look like the below figure.

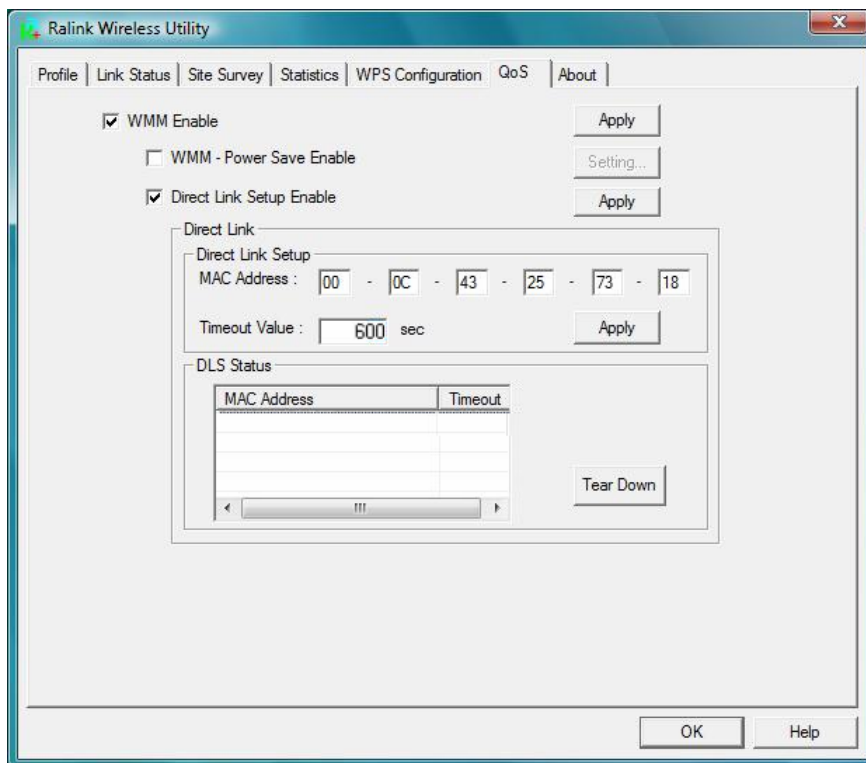


3. Disconnect Direct Link Setup as follow:

Step1: Select a direct link STA.

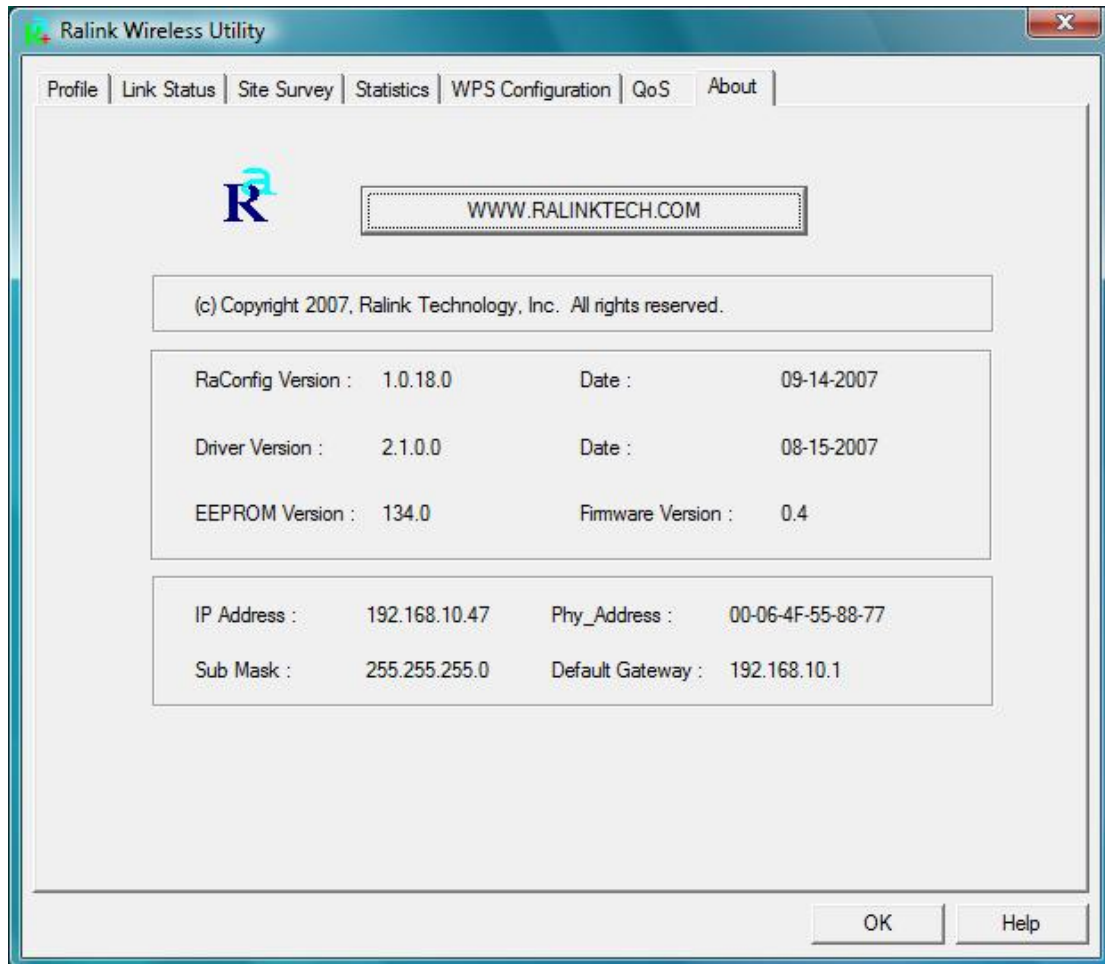


Step2: Click “Tear Down” button. The result will look like the below figure.



3.2.7 About

In the “**About**”, you can click the hyperlink to connect the website for the information of the wireless chipset vendor and review basic information about the Utility such as the RaConfig Version, Driver Version, EEPROM Version, IP Address, Sub Mask, and Default Gateway.

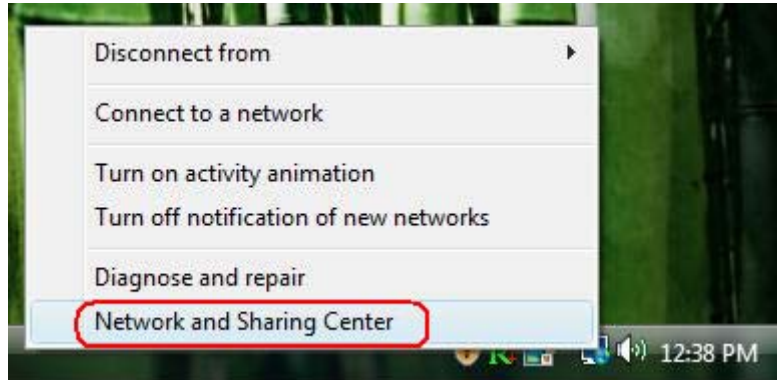


3.2.8 How to Manage Windows Profile

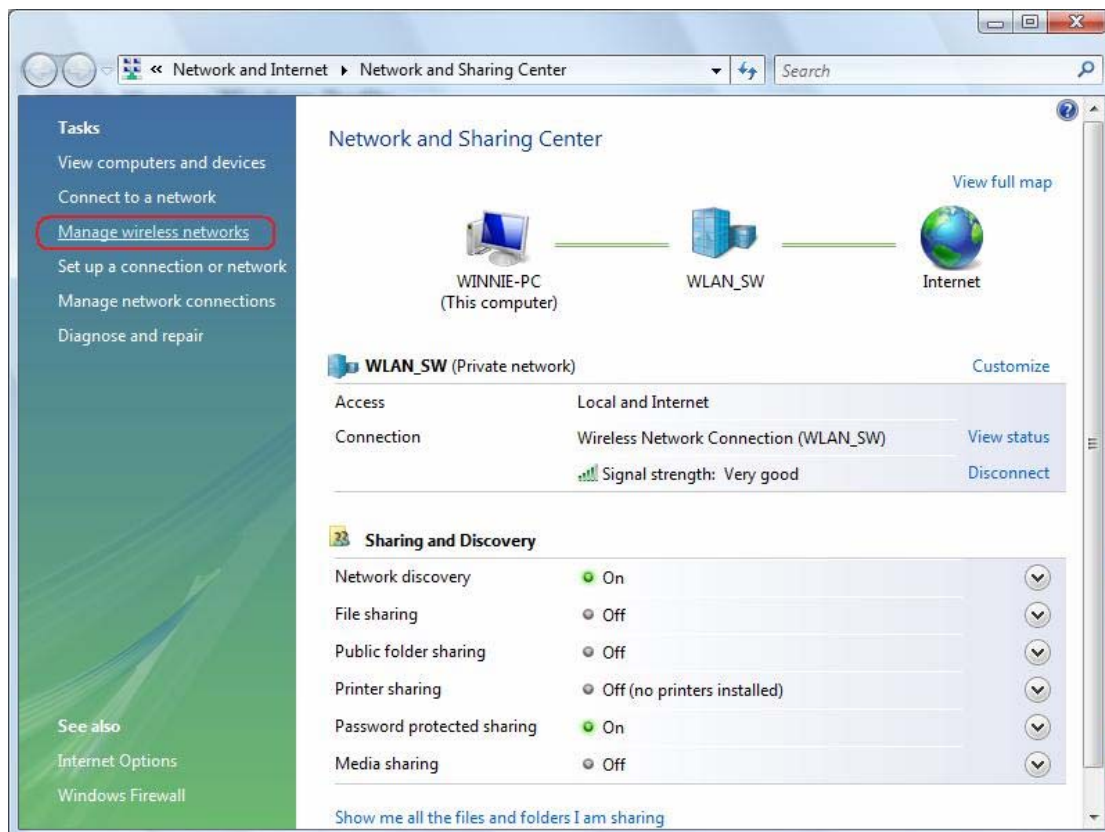
Windows profile manager can be reached via connection icon on the task bar or control panel.

[via Network icon]

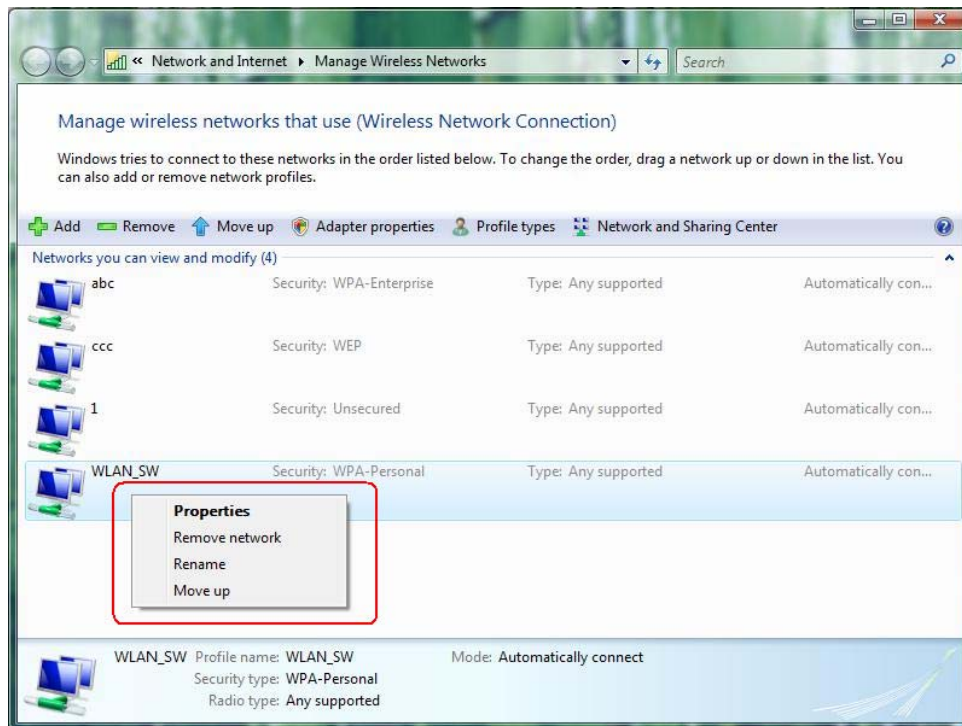
Step 1: Right-click connection icon on the task bar, then click “Network and Sharing Center”



Step 2: Select “Manage wireless networks”

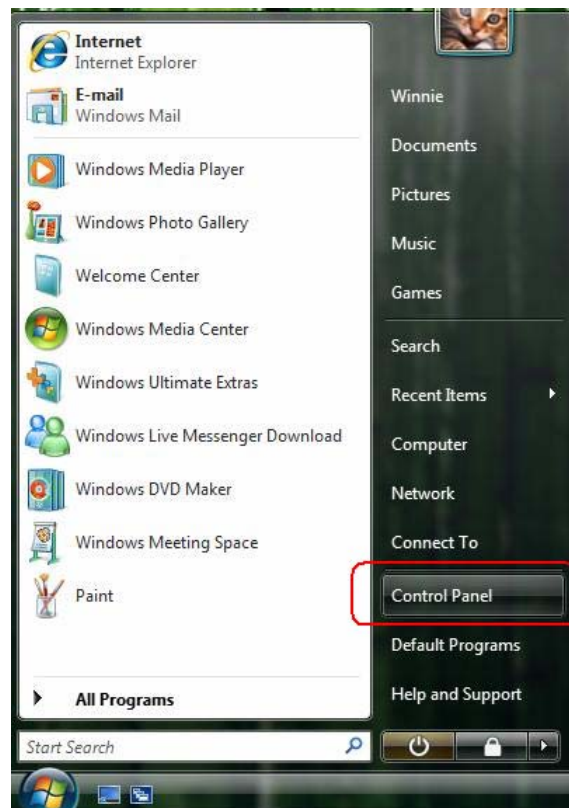


Step 3: Right-click the mouse to bring up the profile manage menu.

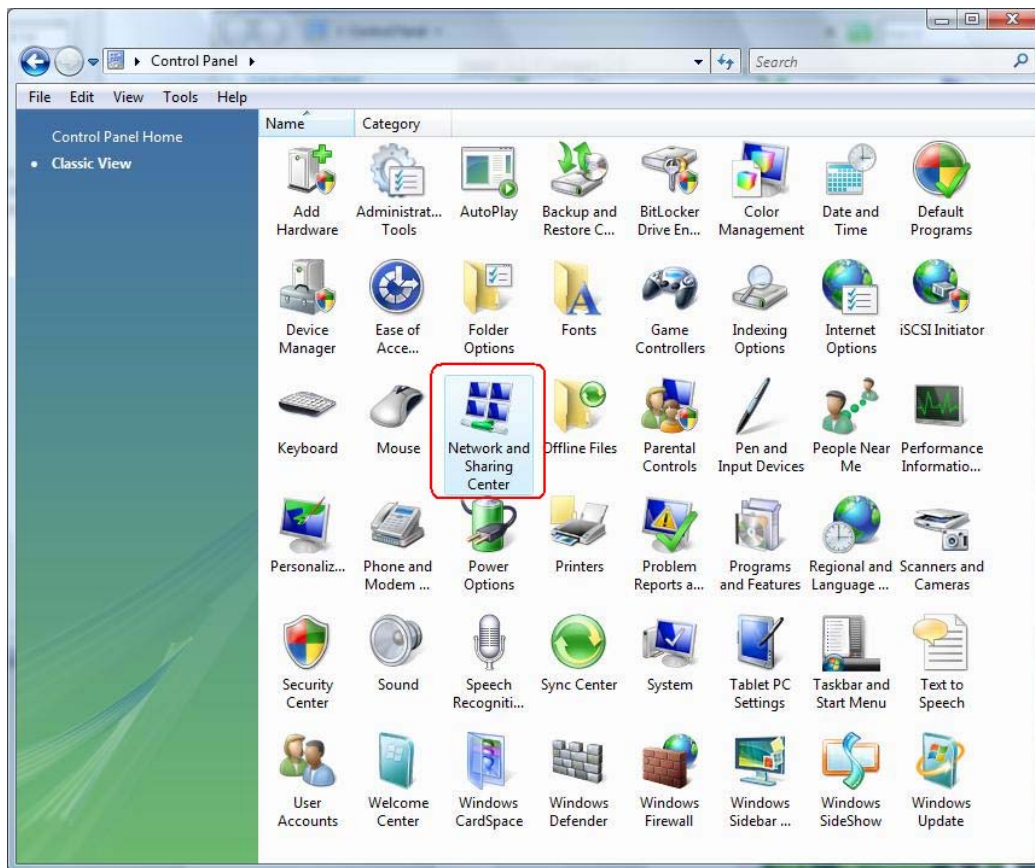


[via Control Panel]

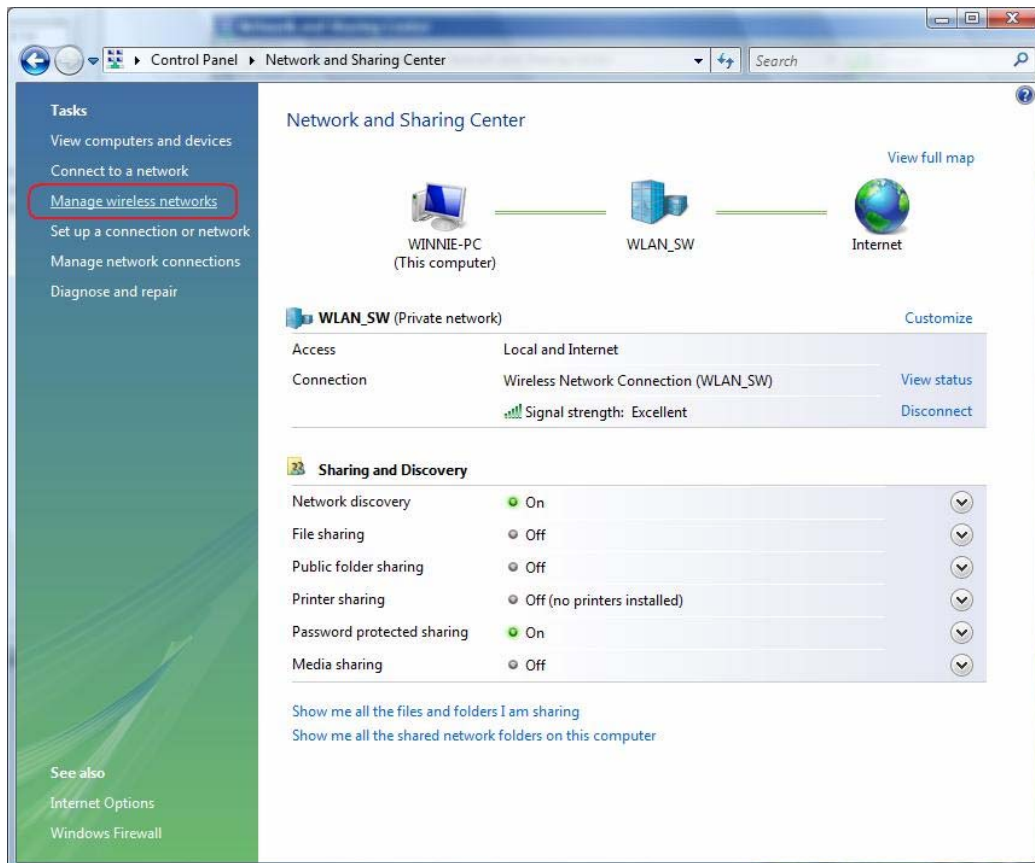
Step 1: Select "Control Panel" on start menu.



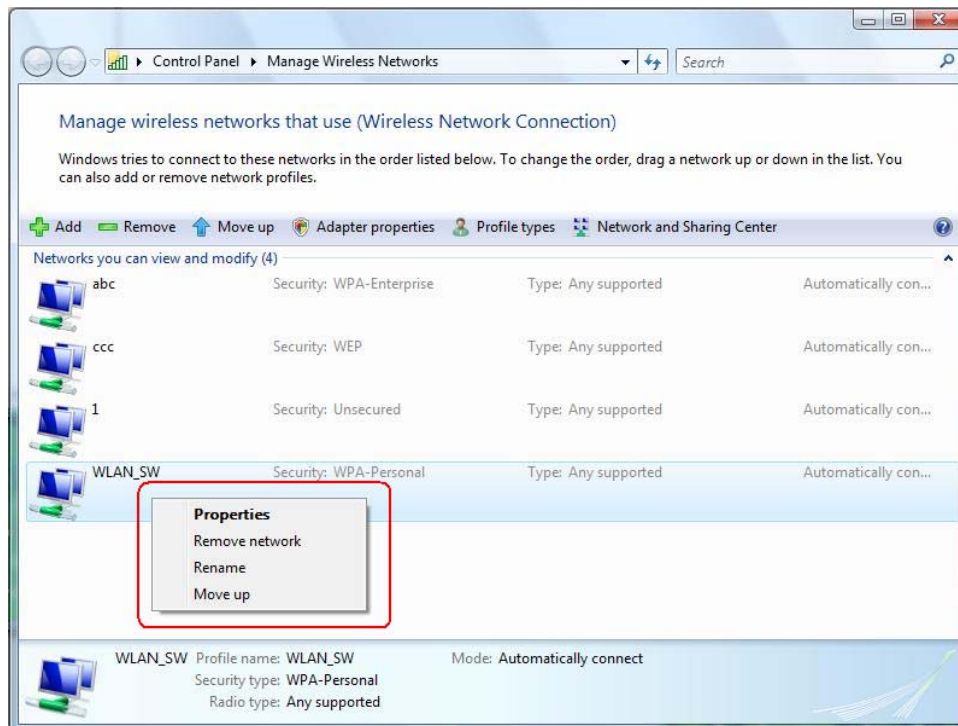
Step 2: Double-click “Network and Sharing Center” icon.



Step 3: Select “Manage Wireless network”.



Step 4: Right-click the mouse to bring up the profile managing menu.



4. Troubleshooting

This chapter provides solutions to problems usually encountered during the installation and operation of the adapter.

1. Symptom:

The LED is Off.

Possible Remedy:

Make sure the Wireless adapter is inserted properly. Otherwise, please contact your vendor.

2. Symptom:

The LED is always on not blinking.

Possible Remedy:

Make sure that you have installed the driver from the attached CD.

3. Symptom:

The LED is blinking but the Wireless adapter icon does not appear in your icon tray.

Possible Remedy:

Make sure that you have installed the Utility from the attached CD.

4. Symptom:

The Wireless adapter is linking, but can't share files with others.

Possible Remedy:

Make sure the **File and printer-sharing** function is enabled.

5. Symptom:

Slow or unstable performance.

Possible Remedy:

Try to change the channel of the communicating group or move your device closer to the communicating device.

6. Symptom:

Can't find the utility icon in the taskbar when plug in the Wireless adapter.

Possible Remedy:

You could enable the function by click the icon of **Start → All Programs → Ralink Utility**.

7. Symptom:

No wireless signal.

Possible Remedy:

Move the antennas of the access point or wireless router into an L shape (one vertically, and one horizontally). Click on the Refresh button on the Site Survey screen. If the computer still does not see the Access Point, and then try to move your Access Point closer to the computer. Then click on the Refresh button again. If the computer still does not see the Access Point, move all things that may cause interference with the wireless signal.

8. Symptom:

If you still cannot get a wireless connection of the network.

Possible Remedy:

Step 1- Turn the computer off

Step 2- Turn the Access Point off

Step 3- Turn the Access Point on

Step 4- Wait 30 seconds

Step 5- Turn the computer back on

Step 6- Using the Utility reconnect to the Access Point:

Step 7- Double click on the bar graph icon in the system tray

Step 8- Select the Site Survey Link

Step 9- Highlight the SSID of your wireless network and click connect

Step 10- Click OK if all the settings are correct

9. What is the IEEE 802.11g standard?

802.11g is the new IEEE standard for high-speed wireless LAN communications that provides for up to 54 Mbps data rate in the 2.4 GHz band. 802.11g is quickly becoming the next mainstream wireless LAN technology for the home, office and public networks. 802.11g defines the use of the same OFDM modulation technique specified in IEEE 802.11a for the 5 GHz frequency band and applies it in the same 2.4 GHz frequency band as IEEE 802.11b. The 802.11g standard requires backward compatibility with 802.11b.

The standard specifically calls for:

A. A new physically layer for the 802.11 Medium Access Control (MAC) in the 2.4 GHz frequency band, know as the extended rate PHY(ERP(. The ERP adds OFDM as a mandatory new coding scheme for 6, 12, and 24 Mbps (mandatory speeds), and 18, 36, 48, 54 Mbps (optional speeds). The ERP includes the modulation schemes found in 802.11b including CCK for 11 and 5.5 Mbps and Barker code modulation for 2 and 1 Mbps.

B. A protection mechanism called RTS.CTS that governs how 802.11g devices and 802.11b devices interoperate.

10. What does IEEE 802.11 feature support?

The product supports the following IEEE 802.11 functions:

- CSMA/CA Plus Acknowledge Protocol
- Multi-Channel Roaming
- Automatic Rate Selection
- RTS/CTS Feature
- Fragmentation
- Power Management

11. What is Ad-Hoc?

An Ad-Hoc integrated wireless LAN is a group of computers, each has a Wireless LAN adapter, Connected as an independent wireless LAN. Ad-Hoc wireless LAN is applicable at a departmental scale for a branch or SOHO operation.

12. What is Infrastructure?

An integrated wireless and wireless and wired LAN is called an Infrastructure configuration. Infrastructure is applicable to enterprise scale for wireless access to central database, or wireless application for mobile workers.

13. What is BSS ID?

A specific Ad hoc LAN is called a Basic Service Set (BSS). Computers in a BSS must be configured with the same BSS ID.

14. What is WEP?

WEP is Wired Equivalent Privacy, a data privacy mechanism based on a 40 bit shared key algorithm, as described in the IEEE 802.11 standard.

15. What is TKIP?

TKIP is a quick-fix method to quickly overcome the inherent weaknesses in WEP security, especially the reuse of encryption keys. TKIP is involved in the IEEE 802.11i WLAN security standard, and the specification might be officially released by early 2003.

16. What is AES?

AES (Advanced Encryption Standard), a chip-based security, has been developed to ensure the highest degree of security and authenticity for digital information, wherever and however communicated or stored, while making more efficient use of hardware and/or software than previous encryption standards. It is also included in IEEE 802.11i standard.

Compare with AES, TKIP is a temporary protocol for replacing WEP security until manufacturers implement AES at the hardware level.

17. Would the information be intercepted while transmitting on air?

WLAN features two-fold protection in security. On the hardware side, as with Direct Sequence Spread Spectrum technology, it has the inherent security feature of scrambling. On the software side, WLAN series offer the encryption function (WEP) to enhance security and Access Control. Users can set it up depending upon their needs.

If you have any troubles to configure or setup this WLAN adapter, please feel free to contact us.

Before contacting us, make sure collect following information. Submit complete detailed information of your problem will help us to provide you accurate answers.

Model Name:

Serial Number:

PC Settings:

Other:

EU Declaration of Conformity and Restrictions

Hereby, PRO-NETS Technology Corp., declares that this equipment complies with the essential requirements and other relevant provisions of Directive 1999/5/EC.

This equipment is marked with the **CE0984** symbol and can be used throughout the European community.

This indicates compliance with the R&TTE Directive 1999/5/EC and meets the relevant parts of following technical specifications:

EN 300 328: Electromagnetic compatibility and Radio spectrum Matters (ERM); Wideband Transmission Systems; Data transmission equipment operating in the 2,4GHz ISM band and using spread spectrum modulation techniques; Harmonized EN covering essential requirements under article 3.2 of the R&TTE directive.

EN 301 489-17: Electromagnetic Compatibility and Radio Spectrum Matters (ERM); Electromagnetic Compatibility (EMC) standard for radio equipment and services; Part 17 Specific Conditions for Wideband Data and HIPERLAN Equipment.

EN 60950: Safety of Information Technology Equipment.

EN 50385: Product standard to demonstrate the compliances of radio base stations and fixed terminal stations for wireless telecommunication systems with the basic restrictions or the reference levels related to human exposure to radio frequency electromagnetic fields.

Marking by the symbol **!** indicates that usage restrictions apply.

France - 2.4GHz for Metropolitan France:

In all Metropolitan départements, wireless LAN frequencies can be used under the following conditions, either for public or private use:

- Indoor use: maximum power (EIRP*) of 100 mW for the entire 2400-2483.5 MHz frequency band
- Outdoor use: maximum power (EIRP*) of 100 mW for the 2400-2454 MHz band and with maximum power (EIRP*) of 10 mW for the 2454-2483 MHz band

Caution: Exposure to Radio Frequency Radiation.

To comply with RF exposure compliance requirements, for mobile configurations, a separation distance of at least 20 cm must be maintained between the antenna of this device and all persons.

This device is intended for use in the following European Community countries:

Austria	Belgium	Czech Republic	Cyprus
Denmark	Estonia	France	Finland
Germany	Greece	Hungary	Ireland
Italy	Iceland	Luxemburg	Latvia
Lithuania	Malta	Norway	Netherlands
Portugal	Poland	Spain	Sweden
Slovakia	Slovenia	United Kingdom	