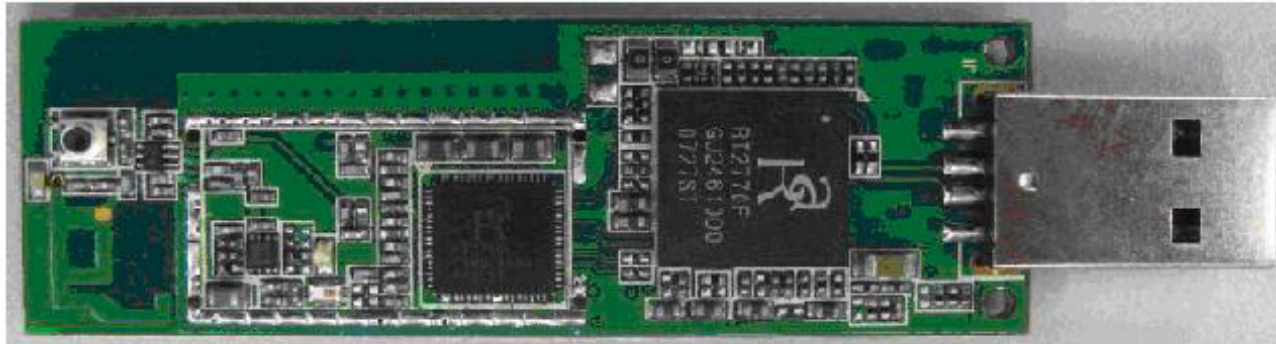


• The Construction of New -Type PIFA Antenna on Ralink's USB Board

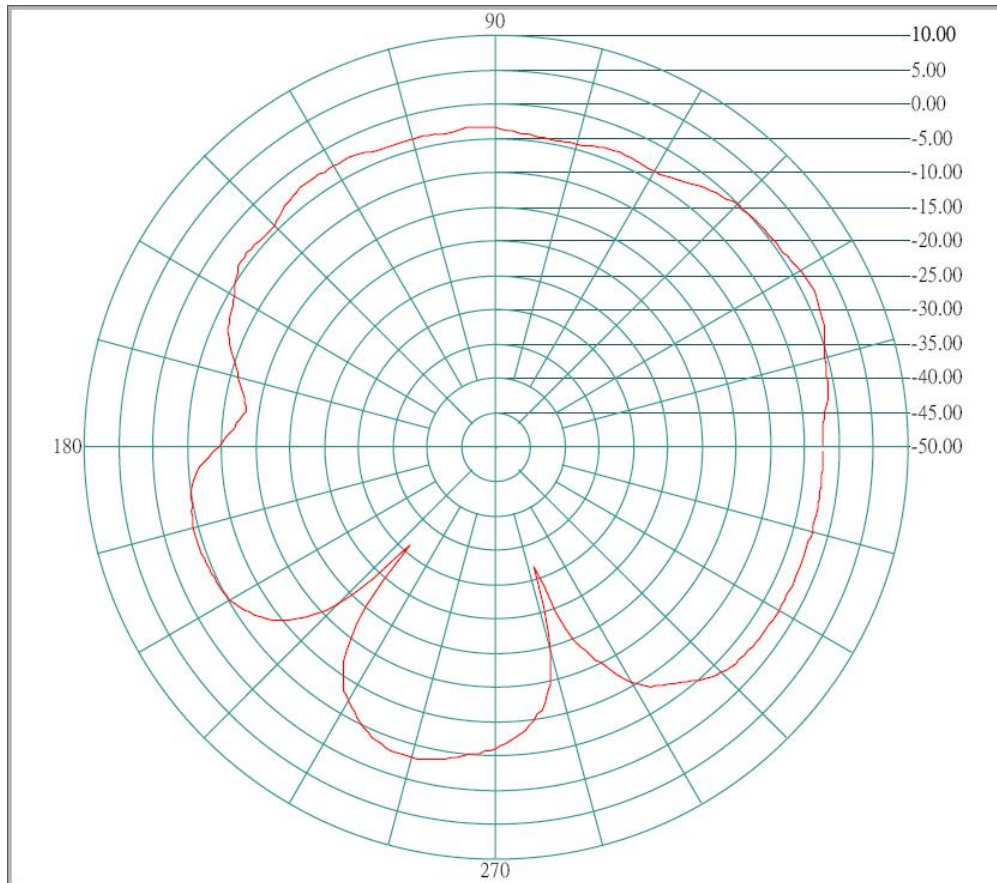
Ant A

(TOP View)



# • New-Type PIFA Antenna Radiation Pattern at 2450MHz

## 2. XY- Plane Ant A.

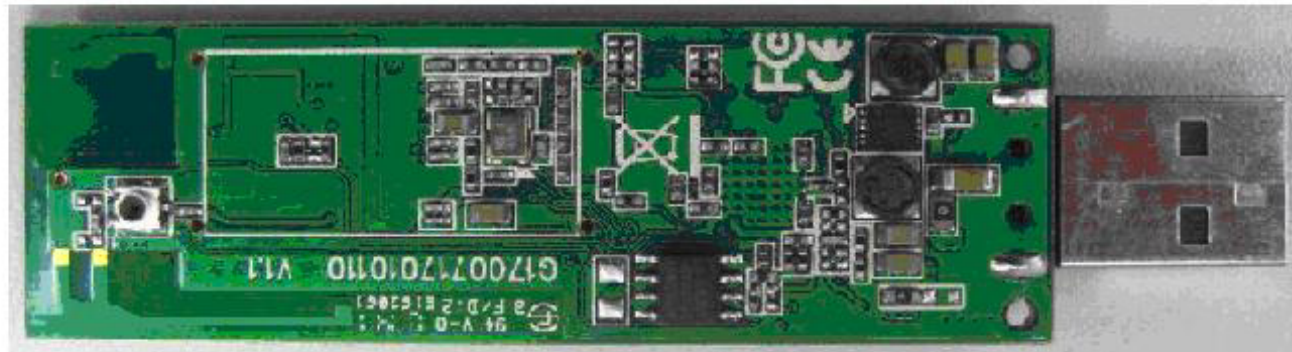


	Peak (dBi)	Average (dBi)
Horizontal	1.76	-3.62

• The Construction of New -Type PIFA Antenna on Ralink's USB Board

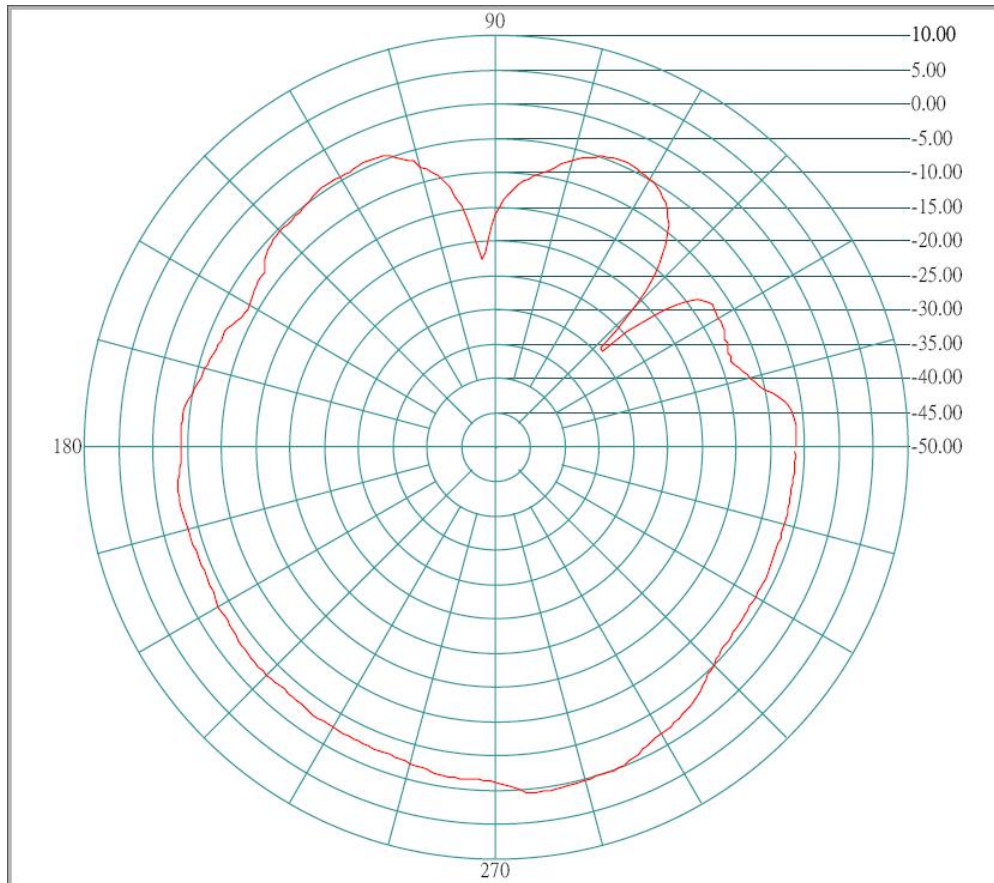
Ant B

(Bottom View)



## • New-Type PIFA Antenna Radiation Pattern at 2500MHz

### 3. XY- Plane Ant B.



	<b>Peak (dBi)</b>	<b>Average (dBi)</b>
<b>Vertical</b>	<b>0.85</b>	<b>-4.40</b>