

AT7020 Series

Multilayer Chip Antenna

Features

- ❖ Monolithic SMD with small, low-profile and light-weight type.
- ❖ Wide bandwidth

Applications

- ❖ 2.4GHz WLAN, Home RF, Bluetooth Modules, etc.



Specifications

Part Number	Frequency Range (MHz)	Peak Gain (dBi typ.)	Average Gain (dBi typ.)	VSWR	Impedance
AT7020-B2R4HAA_	2400~2500	2.0 (XZ-V)	0.5 (XZ-V)	2 max.	50 Ω

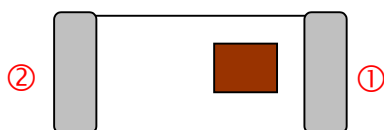
Q'ty/Reel (pcs) : 1,000 pcs
 Operating Temperature Range : -40 ~ +85 °C
 Storage Temperature Range : -40 ~ +85 °C
 Power Capacity : 3W max.

Part Number

AT **7020** - **B** **2R4** **HAA** **□**
 ① ② ③ ④ ⑤ ⑥

① Type	AT : Antenna	② Dimensions (L x W)	7.0x 2.0 mm
③ Material Code	B	④ Frequency Range	2R4=2400MHz
⑤ Specification Code	HAA	⑥ Packaging	T: Tape & Reel B: Bulk

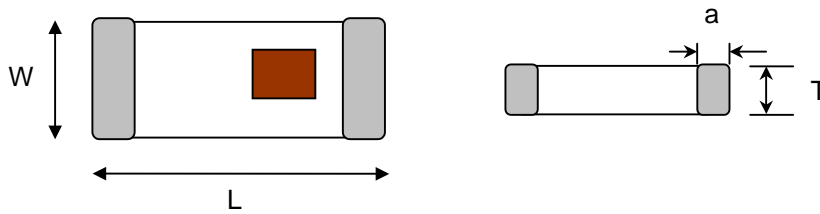
Terminal Configuration



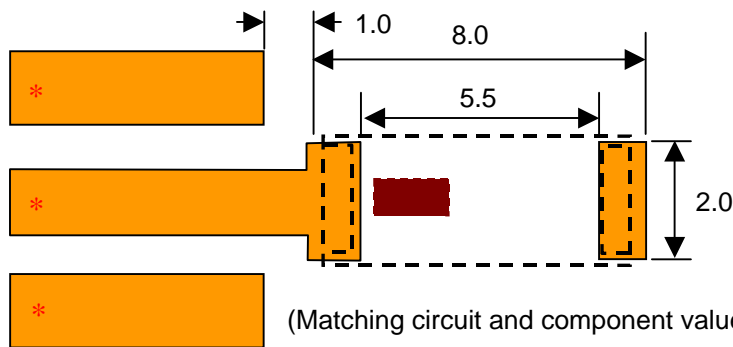
No.	Terminal Name	No.	Terminal Name
①	Feeding Point	②	NC

Dimensions and Recommended PC Board Pattern

Unit : mm



Mark	L	W	T	a
Dimensions	7.0±0.2	2.0±0.2	1.2+ 0.1/-0.2	0.5±0.3

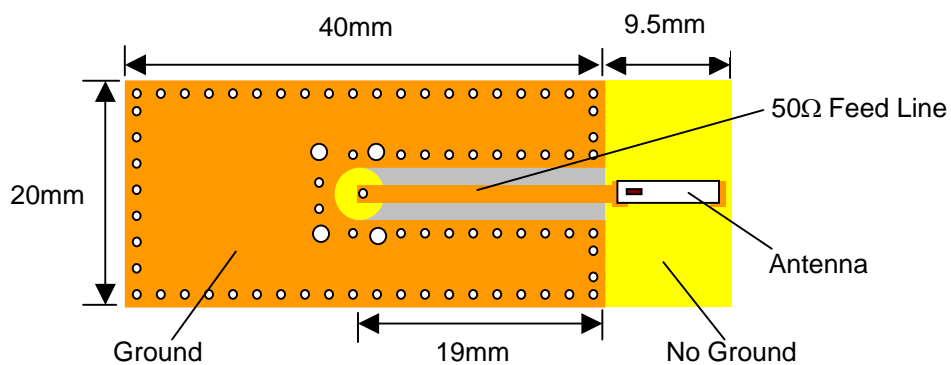


(Matching circuit and component values will be different, depending on PCB layout)

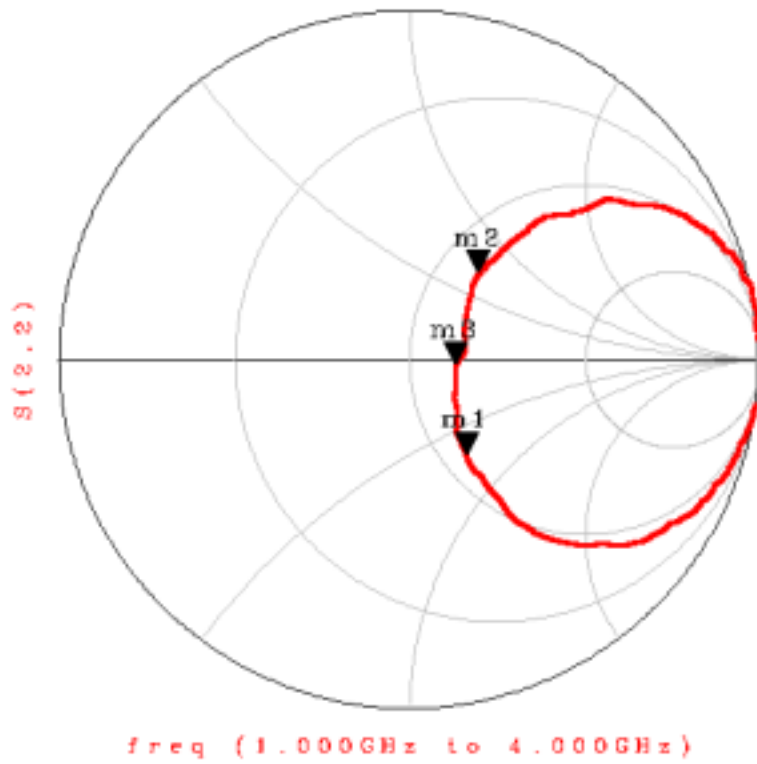
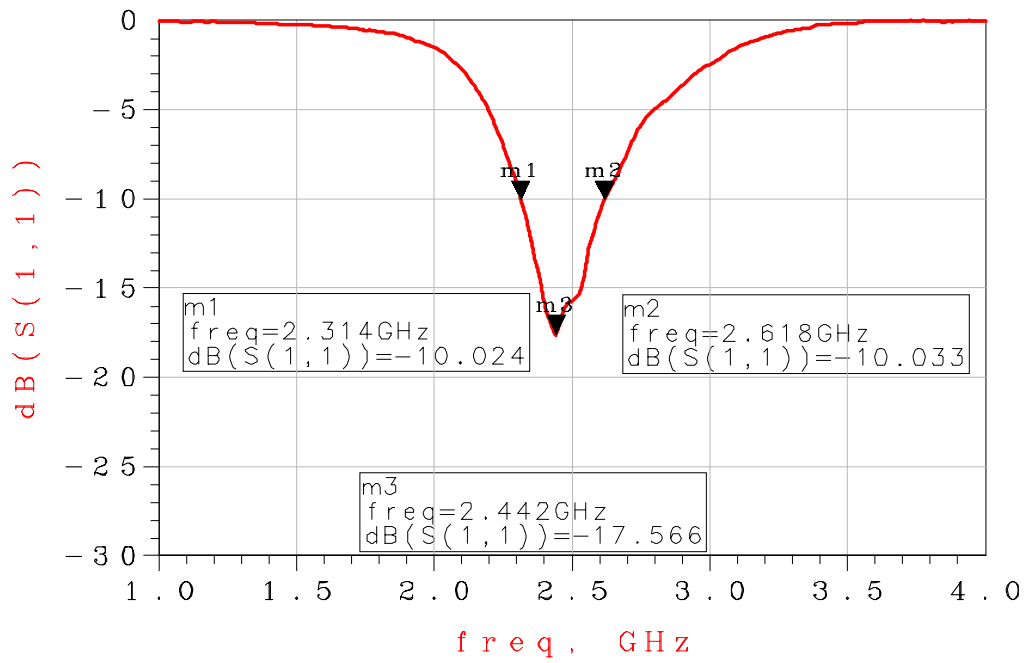
*Line width should be designed to match 50Ω characteristic impedance, depending on PCB material and thickness.

Typical Electrical Characteristics (T=25°C)

❖ Test Board

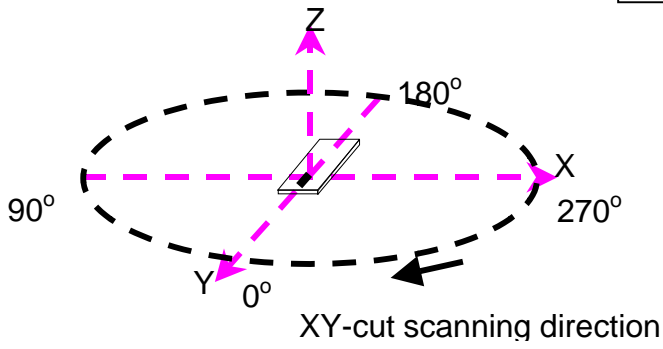


Return Loss

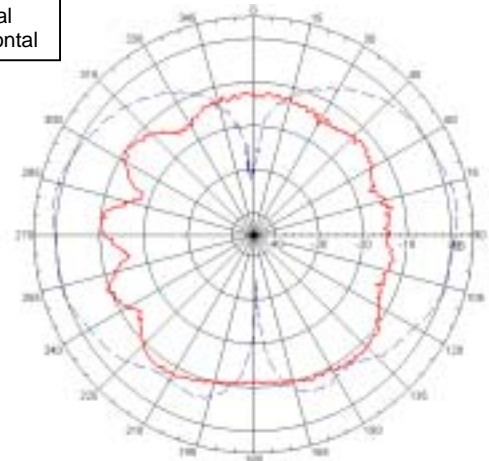


❖ Radiation Patterns

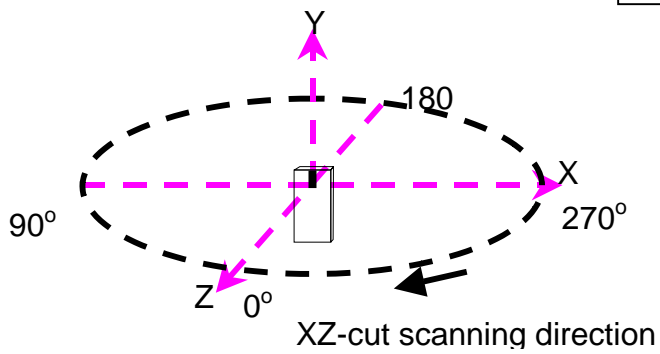
XY-V/XY-H



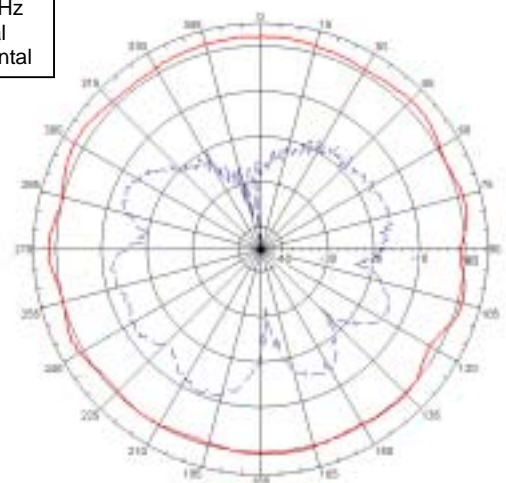
XY cut @2.45GHz
— Vertical
⋯ Horizontal



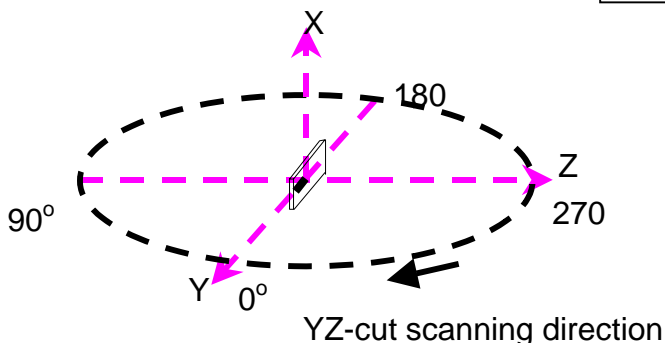
XZ-V/XZ-H



XZ cut @2.45GHz
— Vertical
⋯ Horizontal



YZ-V/YZ-H



YZ cut @2.45GHz
— Vertical
⋯ Horizontal

