



Product Service

**Choose certainty.
Add value.**

Report On

Specific Absorption Rate Testing of the
Philips Technologies CT9A9j Handset

FCC ID: RXXCT9A9J

Document 75902829 Report 04 Issue 2

March 2008



Product Service

TÜV Product Service Ltd, Octagon House, Concorde Way, Segensworth North,
Fareham, Hampshire, United Kingdom, PO15 5RL
Tel: +44 (0) 1489 558100. Website: www.tuvps.co.uk

REPORT ON

Specific Absorption Rate Testing of the
Philips Technologies CT9A9j Handset

Document 75902829 Report 04 Issue 2

March 2008

PREPARED FOR

Wiz4com Technologies
Rue Maurice Trintignant
72093 Le Mans
Cedex 9
France

PREPARED BY

A handwritten signature in black ink, appearing to read 'A Miller', written over a horizontal line.

A Miller
Principal Engineer

APPROVED BY

A handwritten signature in black ink, appearing to read 'M J Hardy', written over a horizontal line.

M J Hardy
Authorised Signatory

DATED

26 March 2008



Product Service

CONTENTS

Section	Page No
1	REPORT SUMMARY 3
1.1	Introduction 4
1.2	Brief Summary of Results 5
1.3	Test Results Summary 5
1.4	Product Information 9
2	TEST DETAILS 12
2.1	SAR Measurement System 13
2.2	GSM850 Head SAR Test Results and Course Area Scans – 2D 19
2.3	GSM850 Body SAR Test Results and Course Area Scans – 2D 26
2.4	PCS1900 Head SAR Test Results and Course Area Scans – 2D 31
2.5	PCS1900 Body SAR Test Results and Course Area Scans – 2D 38
3	TEST EQUIPMENT USED 44
3.1	Test Equipment Used 45
3.2	Test Software 46
3.3	Dielectric Properties of Simulant Liquids 47
3.4	Test Conditions 48
3.5	Measurement Uncertainty 49
4	PHOTOGRAPHS 50
4.1	Test Positional Photographs 51
4.2	Photographs of Equipment Under Test (EUT) 53
5	ACCREDITATION, DISCLAIMERS AND COPYRIGHT 55
5.1	Accreditation, Disclaimers and Copyright 56
ANNEX A	Probe Calibration Information A.2



Product Service

SECTION 1

REPORT SUMMARY

Specific Absorption Rate Testing of the
Philips Technologies CT9A9j Handset



Product Service

1.1 INTRODUCTION

The information contained in this report is intended to show verification of the Specific Absorption Rate Testing of the Philips Technologies CT9A9j Handset to the requirements of US Federal Government, Code of Federal Regulations, Title 47 Telecommunication, Chapter I Federal Communications Commission, part 2, section 1093. Applied standard – Federal Communications Commission (FCC) OET Bulletin 65c, Edition 01-01, Evaluating Compliance with FCC Guidelines for Human Exposure to Radiofrequency Electromagnetic Fields – Additional Information for Evaluating Compliance of Mobile and Portable Devices with FCC Limits for Human Exposure to Radiofrequency Emissions

Objective	To perform Specific Absorption Rate Testing to determine the Equipment Under Test's (EUT's) compliance with the specification, for the series of tests carried out.
Applicant	WiZ4Com Technologies
Manufacturer	Philips Technologies Corporation
Manufacturing Description	Mobile Handset
Model Number	CT9A9j
Power Class	GSM 850 MHz Class 4 PCS 1900 MHz Class 1 Bluetooth Class 3
GPRS Class	Class B
GPRS Multi-slot Class	10(4Dn; 2Up; Sum5)
IMEI Number(s) Handset 1	358233000056239
Hardware Version	PR3
Software Version	64604
Battery Cell Manufacturer	Philips Technologies Corporation, Battery Source – XWODA.
Model Number	AB0950AWM (Type: Li-ion 3.7V / 950mAh)
FCC ID	RXXCT9A9J
Test Specification/Issue/Date	OET (c)65 01-01
Start of Test	19 February 2008
Finish of Test	20 March 2008
Related Document(s)	IEEE 1528 – 2003



Product Service

1.2 BRIEF SUMMARY OF RESULTS

The wireless portable device described within this report has been shown to be capable of compliance for localised specific absorption rate (SAR) of 1.6 W/kg.

The measurements shown in this report were made in accordance with the procedures specified OET 65(c) 01-01.

All reported testing was carried out on a sample of equipment to demonstrate compliance with OET 65(c) 01-01. The sample tested was found to comply with the requirements in the applied rules.

The maximum 1g volume averaged SAR found during this Assessment

Max 1g SAR (W/kg)	1.559
The maximum 1g volume averaged SAR level measured for all the tests performed did not exceed the limits for General Population/Uncontrolled Exposure (W/kg) Partial Body of 1.6 W/kg. Level defined in Supplement C (Edition 01-01) to OET Bulletin 65 (97-01).	

1.3 TEST RESULTS SUMMARY

1.3.1 System Performance / Validation Check Results

Prior to formal testing being performed a System Check was performed in accordance with OET 65 Supplement C (Edition 01-01) and the results were compared against published data in Standard IEEE 1528-2003. The following results were obtained: -

System performance / Validation results

Date	Dipole Used	Frequency (MHz)	Max 1g SAR (W/kg)	Percentage Drift on Reference	Max 10g SAR (W/kg)	Percentage Drift on Reference
07/01/2008	850 MHz	844.4	9.69*	2.00%	6.39*	3.12%
10/01/2008	1900 MHz	1883.6	39.31*	-0.98%	20.78*	1.37%
19/03/2008	2450 MHz	2450.0	49.96*	-4.65%	23.59*	-1.70%

*Normalised to a forward power of 1W



Product Service

1.3.2 Results Summary Tables

GSM 850MHz HEAD Specific Absorption Rate (Maximum SAR) 1g & 10g Results for the Philips Technologies CT9A9j Mobile Device In standard configuration with standard antenna & battery.

Position		Channel Number	Frequency (MHz)	Max Spot SAR (W/kg)	Max 1g SAR (W/kg)	Max 10g SAR (W/kg)	SAR Drift (%)	Area scan (Figure number)
Left or Right Hand Ear	Mobile Position							
Alkaline Battery Inserted								
LH	Cheek	189	836.4	1.180	1.055	0.770	-1.030	Figure 8
LH	15°	189	836.4	0.640	0.666	0.472	2.070	Figure 9
RH	Cheek	189	836.4	1.530	1.388	0.968	-1.560	Figure 10
RH	15°	189	836.4	0.730	0.690	0.495	1.250	Figure 11
RH	Cheek	128	824.2	1.680	1.494	1.045	-0.510	Figure 12
RH	Cheek	251	848.8	1.420	1.385	0.980	-1.000	Figure 13
Alkaline Battery Removed								
RH	Cheek	128	824.2	1.690	1.559	1.086	0.030	Figure 14
Limit for General Population (Uncontrolled Exposure) 1.6 W/kg (1g) & 2.0 W/kg (10g)								

GPRS 850MHz BODY Specific Absorption Rate (Maximum SAR) 1g & 10g Results for the Philips Technologies CT9A9j Mobile Handset and standard antenna & battery.

Position		Channel Number	Frequency (MHz)	Max Spot SAR (W/kg)	Max 1g SAR (W/kg)	Max 10g SAR (W/kg)	SAR Drift (%)	Area scan (Figure number)
Spacing From Phantom	Mobile Position							
Alkaline Battery Inserted								
15mm	Front Facing	189	836.4	0.760	0.867	0.622	-3.530	Figure 15
15mm	Rear Facing	189	836.4	0.830	0.948	0.677	-0.150	Figure 16
15mm	Rear Facing	128	824.2	0.930	1.035	0.752	-1.020	Figure 17
15mm	Rear Facing	251	848.8	0.770	0.863	0.630	1.670	Figure 18
Alkaline Battery Removed								
15mm	Rear Facing	128	824.2	0.870	0.993	0.702	-2.030	Figure 19
Limit for General Population (Uncontrolled Exposure) 1.6 W/kg (1g) & 2.0 W/kg (10g)								



Product Service

GSM 1900MHz HEAD Specific Absorption Rate (Maximum SAR) 1g & 10g Results for the Philips Technologies CT9A9j Mobile Device In standard configuration with standard antenna & battery.

Position		Channel Number	Frequency (MHz)	Max Spot SAR (W/kg)	Max 1g SAR (W/kg)	Max 10g SAR (W/kg)	SAR Drift (%)	Area scan (Figure number)
Left or Right Hand Ear	Mobile Position							
Alkaline Battery Inserted								
LH	Cheek	661	1880.0	0.120	0.120	0.062	0.360	Figure 20
LH	15°	661	1880.0	0.180	0.182	0.095	-4.410	Figure 21
RH	Cheek	661	1880.0	0.100	0.080	0.045	-3.790	Figure 22
RH	15°	661	1880.0	0.100	0.107	0.061	-2.260	Figure 23
LH	15°	512	1850.2	0.200	0.185	0.096	-0.960	Figure 24
LH	15°	810	1909.8	0.170	0.168	0.088	3.280	Figure 25
Alkaline Battery Removed								
LH	15°	512	1850.2	0.170	0.172	0.092	-2.290	Figure 26
Limit for General Population (Uncontrolled Exposure) 1.6 W/kg (1g) & 2.0 W/kg (10g)								

GPRS 1900MHz BODY Specific Absorption Rate (Maximum SAR) 1g & 10g Results for the Philips Technologies CT9A9j Mobile Handset and standard antenna & battery.

Position		Channel Number	Frequency (MHz)	Max Spot SAR (W/kg)	Max 1g SAR (W/kg)	Max 10g SAR (W/kg)	SAR Drift (%)	Area scan (Figure number)
Spacing From Phantom	Mobile Position							
Alkaline Battery Inserted								
15mm	Front Facing	661	1880.0	0.020	0.026	0.016	0.000	Figure 27
15mm	Rear Facing	661	1880.0	0.040	0.043	0.026	-3.520	Figure 28
15mm	Rear Facing	512	1850.2	0.040	0.052	0.031	0.000	Figure 29
15mm	Rear Facing	810	1909.8	0.030	0.036	0.022	0.870	Figure 30
Alkaline Battery Removed								
15mm	Rear Facing	512	1850.2	0.050	0.067	0.042	-2.590	Figure 31
Limit for General Population (Uncontrolled Exposure) 1.6 W/kg (1g) & 2.0 W/kg (10g)								



Product Service

Bluetooth HEAD Specific Absorption Rate (Maximum SAR) 1g & 10g Results for the Philips Technologies CT9A9j Mobile Device In standard configuration with standard antenna & battery.

Position		Channel Number	Frequency (MHz)	Max Spot SAR (W/kg)	Max 1g SAR (W/kg)	Max 10g SAR (W/kg)	SAR Drift (%)	Area scan (Figure number)
Left or Right Hand Ear	Mobile Position							
Alkaline Battery Inserted								
RH	Cheek	39	2441.0	0.010	0.011	0.008	0.000	Figure 32
Limit for General Population (Uncontrolled Exposure) 1.6 W/kg (1g) & 2.0 W/kg (10g)								

Note: The stand alone SAR measurement of the 1mW Bluetooth device was required in accordance with the requirements of the FCC KDB 648474 document. The sum of both the maximum 1g SAR from the GSM and PCS bands when added to the 1g SAR from the Bluetooth device is < 1.6W/kg. Therefore simultaneous SAR is not required.



1.4 PRODUCT INFORMATION

1.4.1 Technical Description

The equipment under test (EUT) was a Philips Technologies CT9A9j Handset. A full technical description can be found in the manufacturer's documentation.

1.4.2 Test Configuration and Modes of Operation

Philips Technologies supplied a CT9A9j mobile device for Specific Absorption Rate (SAR) testing which was configured for GSM Voice and GSM GPRS Data operation. The Philips Technologies CT9A9j mobile device supplied for Specific Absorption Rate (SAR) testing is a GSM Dual Band mobile device with GPRS functionality. The testing was performed with batteries supplied and manufactured by Philips Technologies Corporation, Battery Source: XWODA. Each battery was fully charged before each measurement and there were no external connections. .

For head SAR assessment, testing was performed with the device in the declared normal position of operation for GSM 850MHz and PCS 1900MHz. The device was placed against a Specific Anthropomorphic Mannequin (SAM) phantom as specified in the CENELEC standard IEEE1528-2003. The phantom was filled with simulant liquid appropriate to the frequency band. The dielectric properties were measured and found to be in accordance with the requirements for the dielectric properties specified in OET 65(c) 01-01. SAR testing was performed at both the left and right ear of the phantom at both handset positions stated in the applied specification.

For body SAR assessment, testing was performed for GPRS 850 MHz, GPRS 1900 MHz bands at maximum power. SAR assessment was performed without a Simple Hands Free (SHF) accessory attached during testing on the Body. The mobile device was placed at distance of 15 mm from the bottom of the flat phantom for all body testing. The Flat Phantom dimensions were 210mm x 210mm x 210mm with a sidewall thickness of 2.00mm. The phantom was filled to a minimum depth of 150mm with the appropriate Body simulant liquid. The dielectric properties were in accordance with the requirements for the dielectric properties specified in Supplement C (Edition 01-01) to OET Bulletin 65 (Edition 97-01).

Testing was performed at the middle frequency of each band and at the top and the bottom frequencies for the position giving maximum SAR. For head SAR assessment the sequence used accorded with the block diagram of tests given in IEEE1528-2003. Testing was performed at the maximum power for GSM 850 MHz and PCS 1900 MHz. This was achieved using a Universal Radio Communications test set.

The Philips Technologies CT9A9j mobile device had an integral GSM/PCS antenna so that the requirement for testing with antenna extended and retracted was not applicable.

The Philips Technologies CT9A9j contains a Bluetooth device and is capable of simultaneous transmission. In order to ascertain SAR compliance during simultaneous transmission, the guidelines from the FCC document, number KDB 648474 – SAR Evaluation Considerations for Handsets with Multiple Transmitters and Antennas; Table 2 – Summary of SAR Evaluation Requirements for Cellphones with Multiple Transmitters, was consulted. The Bluetooth transmitter was assessed independently in the position and frequency providing the maximum SAR for head assessment previously found during the assessment of the GSM850 and PCS1900 bands. The sum of the 1-g SAR was <1.6 W/kg for all simultaneous transmitting antennas. The Bluetooth device was controlled using a Rohde & Schwarz CBT – Bluetooth Tester.



Product Service

The CBT settings were as follows; Device name – Bluetooth de; Version – LMP Version 2.0, Company ID – Philips, Device Version – 256, BD Address 1ADA00101123, LAP – 101123, NAP 1ADA, UAP – 0; Class of Device, Service Class, Major Device Class – Phone; Minor Class Device – Pal sized PC/PDA; Test Mode – TX Tests; Hopping Scheme – RX/TX Single Frequency; Frequency – 2441; Pattern Type Static PRBS; Packet Type DH3. These settings were identical to those used in TUV Product Service Report 75902829 report 02 issue 2, dated 19 March 2008.

The Philips Technologies CT9A9j mobile device was capable of recharging from an internally fitted alkaline battery. The battery housing compartment was at the base on the mobile device. The mobile device was assessed for SAR with an alkaline battery inserted as this was considered to be a normal configuration. The mobile device, with the alkaline battery removed, was subjected to head SAR assessment in the position and frequency providing the maximum SAR for each band for both head and body SAR assessment.

Included in this report are descriptions of the test method; the equipment used and an analysis of the test uncertainties applicable and diagrams indicating the locations of maximum SAR for each test position along with photographs indicating the positioning of the handset against the body as appropriate.

1.4.3 OUTPUT POWER OF TEST DEVICE MEASUREMENT METHOD

The EUT was set up to Transmit on all of the following frequencies (See Table Below).

A peak measurement of the carrier frequency was recorded with the EUT in its worse case orientation using a RES B/W of 1MHz and Vid B/W of 1MHz at a distance of 3m.

A signal generator was then connected to a horn antenna at 1.5m fixed height, at the 3m position in place of the EUT. The measuring receive horn and the substituting transmit horn were then electronically aligned (height search at the received frequency until maximum correlation is achieved).

The signal generator level was adjusted until the recorded peak level (raw peak) was reproduced. The cable was then removed from the substitution transmit horn and attached to the measurement receiver input. The measured level into the substitution transmit horn and its isotropic gain was used to calculate the maximum radiated peak output power (ERP/EIRP).

Frequency MHz	Output Power dBm	Output Power (mW)
2402	-4.34	0.37
2441	-2.51	0.56
2462	-3.56	0.44
824.2	28.49	706.32
836.4	28.08	642.69
848.8	28.95	785.24
1850.2	25.63	365.60
1880.0	23.48	222.84
1909.8	23.82	240.99



Product Service

SECTION 2

TEST DETAILS

Specific Absorption Rate Testing of the
Philips Technologies CT9A9j Handset

2.1 SAR MEASUREMENT SYSTEM

2.1.1 Robot System Specification

The SAR measurement system being used is the IndexSAR SARA2 system, which consists of a Mitsubishi RV-E2 6-axis robot arm and controller, IndexSAR probe and amplifier and SAM phantom Head Shape. The robot is used to articulate the probe to programmed positions inside the phantom head to obtain the SAR readings from the DUT.

Schematic diagram of the SAR measurement system

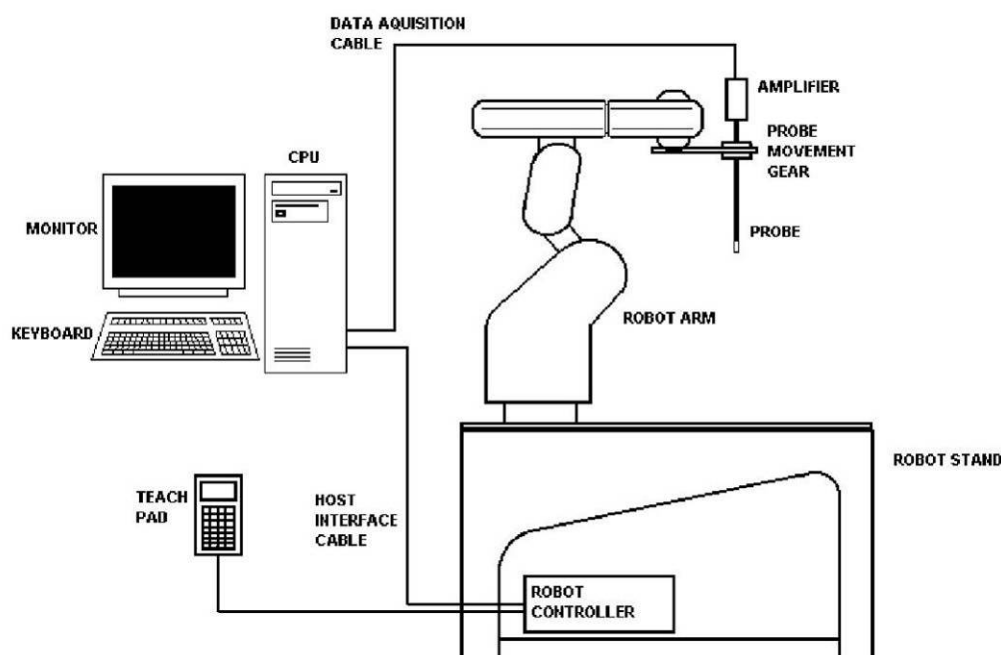


Figure 1

The system is controlled remotely from a PC, which contains the software to control the robot and data acquisition equipment. The software also displays the data obtained from test scans.

The position and digitised shape of the phantom heads are made available to the software for accurate positioning of the probe and reduction of set-up time.

The SAM phantom heads are individually digitised using a Mitutoyo CMM machine to a precision of 0.001mm. The data is then converted into a shape format for the software, providing an accurate description of the phantom shell.

In operation, the system first does an area (2D) scan at a fixed depth within the liquid from the inside wall of the phantom. When the maximum SAR point has been found, the system will then carry out a 3D scan centred at that point to determine volume averaged SAR level.

2.1.2 Probe and Amplifier Specification

IXP-050 IndexSAR isotropic immersible SAR probe

The probes are constructed using three orthogonal dipole sensors arranged on an interlocking, triangular prism core. The probes have built-in shielding against static charges and are contained within a PEEK cylindrical enclosure material at the tip. Probe calibration is described in the following section.

IFA-010 Fast Amplifier

Technical description of IndexSAR IFA-010 Fast probe amplifier

A block diagram of the fast probe amplifier electronics is shown below.

Block diagram of the fast probe amplifier electronic

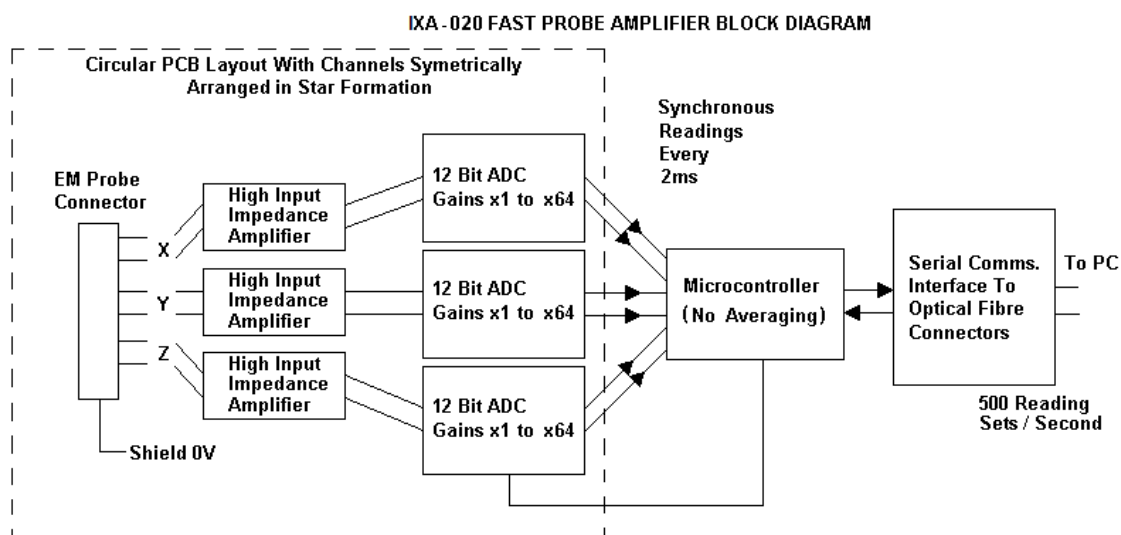


Figure 2

This amplifier has a time constant of approx. 50 μ s, which is much faster than the SAR probe response time. The overall system time constant is therefore that of the probe (<1ms) and reading sets for all three channels (simultaneously) are returned every 2ms to the PC. The conversion period is approx. 1 μ s at the start of each 2ms period. This enables the probe to follow pulse modulated signals of periods >>2ms. The PC software applies the linearisation procedure separately to each reading, so no linearisation corrections for the averaging of modulated signals are needed in this case. It is important to ensure that the probe reading frequency and the pulse period are not synchronised and the behaviour with pulses of short duration in comparison with the measurement interval need additional consideration.

Phantoms

The Flat phantom used is a rectangular Perspex Box IndexSAR item IXB-070. Dimensions 210w 210d 210h (mm). This phantom is used with IndexSAR side bench IXM-030.

The Specific Anthropomorphic Mannequin (SAM) Upright Phantom is fabricated using moulds generated from the CAD files as specified by CENELEC EN 62209-1:2006. It is mounted via a rotation base to a supporting table, which also holds the robotic positioner. The phantom and robot alignment is assured by both mechanical and laser registration systems.

2.1.3 SAR Measurement Procedure

Principal components of the SAR measurement test bench

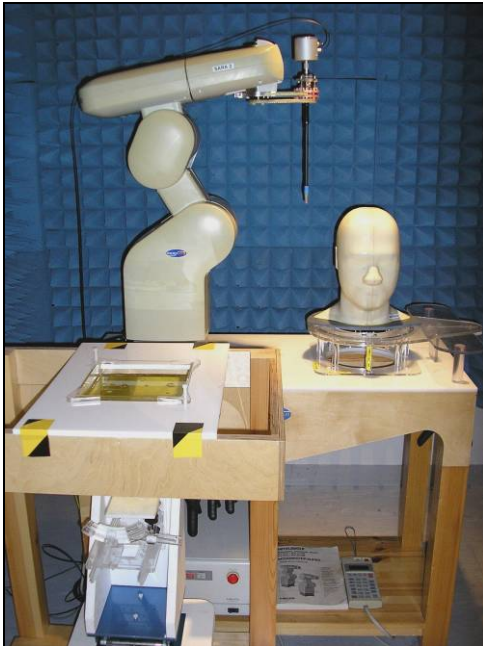


Figure 3

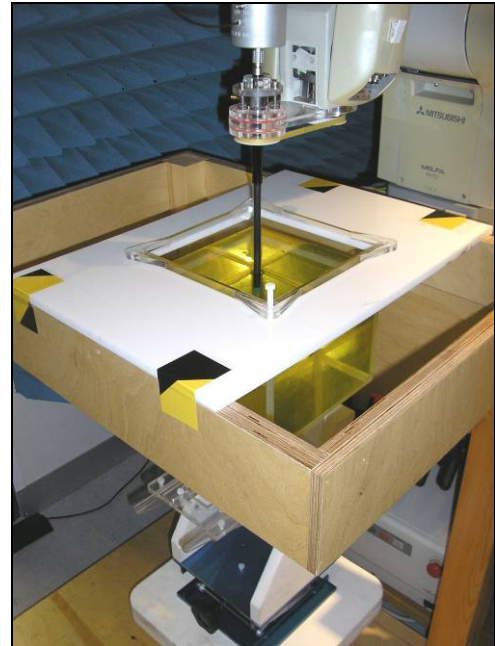


Figure 4

The major components of the test bench are shown in the picture above. A test set and dipole antenna control the handset via an air link and a low-mass phone holder can position the phone at either ear. Graduated scales are provided to set the phone in the 15 degree position. The upright phantom head holds approx. 7 litres of simulant liquid. The phantom is filled and emptied through a 45mm diameter penetration hole in the top of the head.

After an area scan has been done at a fixed distance of 8mm from the surface of the phantom on the source side, a 3D scan is set up around the location of the maximum spot SAR. First, a point within the scan area is visited by the probe and a SAR reading taken at the start of testing. At the end of testing, the probe is returned to the same point and a second reading is taken. Comparison between these start and end readings enables the power drift during measurement to be assessed.

SARA2 Interpolation and Extrapolation schemes

SARA2 software contains support for both 2D cubic B-spline interpolation as well as 3D cubic B-spline interpolation. In addition, for extrapolation purposes, a general n^{th} order polynomial fitting routine is implemented following a singular value decomposition algorithm presented in [4]. A 4th order polynomial fit is used by default for data extrapolation, but a linear-logarithmic fitting function can be selected as an option. The polynomial fitting procedures have been tested by comparing the fitting coefficients generated by the SARA2 procedures with those obtained using the polynomial fit functions of Microsoft Excel when applied to the same test input data.



Product Service

Interpolation of 2D area scan

The 2D cubic B-spline interpolation is used after the initial area scan at fixed distance from the phantom shell wall. The initial scan data are collected with approx. 115mm spatial resolution and spline interpolation is used to find the location of the local maximum to within a 1mm resolution for positioning the subsequent 3D scanning.

Extrapolation of 3D scan

For the 3D scan, data are collected on a spatially regular 3D grid having (by default) 6.4 mm steps in the lateral dimensions and 3.5 mm steps in the depth direction (away from the source). SARA2 enables full control over the selection of alternative step sizes in all directions.

The digitised shape of the head is available to the SARA2 software, which decides which points in the 3D array are sufficiently well within the shell wall to be 'visited' by the SAR probe. After the data collection, the data are extrapolated in the depth direction to assign values to points in the 3D array closer to the shell wall. A notional extrapolation value is also assigned to the first point outside the shell wall so that subsequent interpolation schemes will be applicable right up to the shell wall boundary.

Interpolation of 3D scan and volume averaging

The procedure used for defining the shape of the volumes used for SAR averaging in the SARA2 software follow the method of adapting the surface of the 'cube' to conform with the curved inner surface of the phantom (see Appendix C.2.2.1 in EN 62209-1:2006). This is called, here, the conformal scheme.

For each row of data in the depth direction, the data are extrapolated and interpolated to less than 1mm spacing and average values are calculated from the phantom surface for the row of data over distances corresponding to the requisite depth for 10g and 1g cubes. This results in two 2D arrays of data, which are then cubic B-spline interpolated to sub mm lateral resolution. A search routine then moves an averaging square around through the 2D array and records the maximum value of the corresponding 1g and 10g volume averages. For the definition of the surface in this procedure, the digitised position of the headshell surface is used for measurement in head-shaped phantoms. For measurements in rectangular, box phantoms, the distance between the phantom wall and the closest set of gridded data points is entered into the software.

For measurements in box-shaped phantoms, this distance is under the control of the user. The effective distance must be greater than 2.5mm as this is the tip-sensor distance and to avoid interface proximity effects, it should be at least 5mm. A value of 6 or 8mm is recommended. This distance is called **dbe** in EN 62209-1:2006.

For automated measurements inside the head, the distance cannot be less than 2.5mm, which is the radius of the probe tip and to avoid interface proximity effects, a minimum clearance distance of x mm is retained. The actual value of **dbe** will vary from point to point depending upon how the spatially-regular 3D grid points fit within the shell. The greatest separation is when a grid point is just not visited due to the probe tip dimensions. In this case the distance could be as large as the step-size plus the minimum clearance distance (i.e with $x=5$ and a step size of 3.5, **dbe** will be between 3.5 and 8.5mm).

The default step size (**dstep** in EN 62209-1:2006) used is 3.5mm, but this is under user-control. The compromise is with time of scan, so it is not practical to make it much smaller or scan times become long and power-drop influences become larger.



Product Service

The robot positioning system specification for the repeatability of the positioning (**dss** in EN 62209-1:2006) is $\pm 0.04\text{mm}$.

The phantom shell is made by an industrial moulding process from the CAD files of the SAM shape, with both internal and external moulds. For the upright phantoms, the external shape is subsequently digitised on a Mitutoyo CMM machine (Euro C574) to a precision of 0.001mm . Wall thickness measurements made non-destructively with an ultrasonic sensor indicate that the shell thickness (**dph**) away from the ear is $2.0 \pm 0.1\text{mm}$. The ultrasonic measurements were calibrated using additional mechanical measurements on available cut surfaces of the phantom shells.

For the upright phantom, the alignment is based upon registration of the rotation axis of the phantom on its 253mm-diameter baseplate bearing and the position of the probe axis when commanded to go to the axial position. A laser alignment tool is provided (procedure detailed elsewhere). This enables the registration of the phantom tip (**dmis**) to be assured to within approx. 0.2mm . This alignment is done with reference to the actual probe tip after installation and probe alignment. The rotational positioning of the phantom is variable – offering advantages for special studies, but locating pins ensure accurate repositioning at the principal positions (LH and RH ears).

2.1.4 Head Test Positions

This recommended practice specifies exactly two test positions for the handset against the head phantom, the “Cheek” position and the “tilted” position. These two test positions are defined in the following sub-clauses. The handset should be tested in both positions on the left and right sides of the SAM phantom. In each test position the centre of the earpiece of the device is placed directly at the entrance of the auditory canal. The angles mentioned in the test positions used are referenced to the line connecting both auditory canal openings. The plane this line is on is known as the reference plane. Testing is performed on the right and left-hand sides of the generic phantom head.

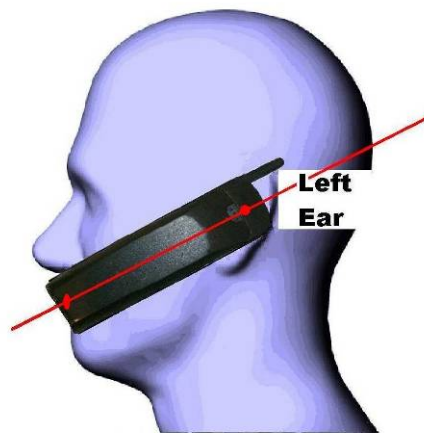


Figure 5. – Side View of Mobile next to head showing alignment.

The Cheek Position

The Cheek Position is where the mobile is in the reference plane and the line between the mobile and the line connecting both auditory canal openings is reduced until any part of the mobile touches any part of the generic twin phantom head.

The 15° Position

The 15° Position is where the mobile is in the reference Cheek position and the phone is kept in contact with the auditory canal at the earpiece; the bottom of the phone is then tilted away from the phantom mouth by 15°.

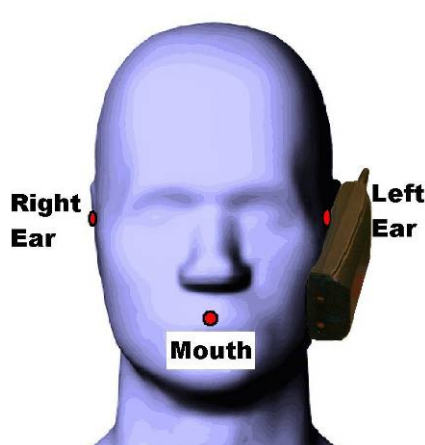


Figure 6. – Cheek Position.

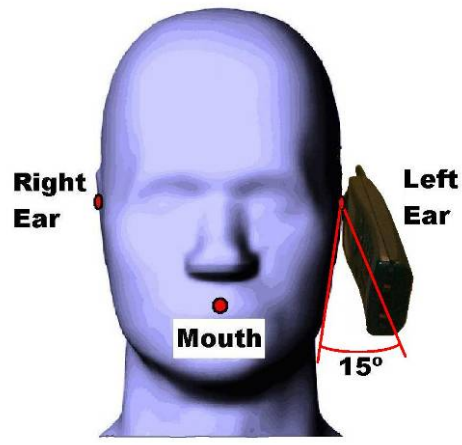


Figure 7. – 15° Tilt Position.

2.2 GSM850 HEAD SAR TEST RESULTS AND COURSE AREA SCANS – 2D

SYSTEM / SOFTWARE:	SARA2 / 2.53 VPM	INPUT POWER DRIFT:	0.0 dB
DATE / TIME:	19/02/2008 09:10:59	DUT BATTERY MODEL/NO:	AB0950AWM
FILENAME:	75902829-251000-01.txt	PROBE SERIAL NUMBER:	0187
AMBIENT TEMPERATURE:	24.0°C	LIQUID SIMULANT:	835 Head
DEVICE UNDER TEST:	Philips CT9A9j	RELATIVE PERMITTIVITY:	40.24
RELATIVE HUMIDITY:	22.3%	CONDUCTIVITY:	0.886
PHANTOM S/NO:	Head_04_35.csv	LIQUID TEMPERATURE:	23.5°C
PHANTOM ROTATION:	0°	MAX SAR Y-AXIS LOCATION:	-28.00 mm
DUT POSITION:	LH-Cheek (Alkaline battery in)	MAX SAR Z-AXIS LOCATION:	-142.35 mm
ANTENNA CONFIGURATION:	Fixed Internal	MAX E FIELD:	36.45 V/m
TEST FREQUENCY:	836.4MHz	SAR 1g:	1.055 W/kg
AIR FACTORS:	346 / 439 / 415	SAR 10g:	0.770 W/kg
CONVERSION FACTORS:	0.318 / 0.318 / 0.318	SAR START:	0.515 W/kg
TYPE OF MODULATION:	GMSK (GSM Voice Mode)	SAR END:	0.509 W/kg
MODN. DUTY CYCLE:	12.5%	SAR DRIFT DURING SCAN:	-1.03 %
DIODE COMPRESSION FACTORS (V*200):	20 / 20 / 20	PROBE BATTERY LAST CHANGED:	19/02/08
INPUT POWER LEVEL:	28.08 dBm	EXTRAPOLATION:	poly4

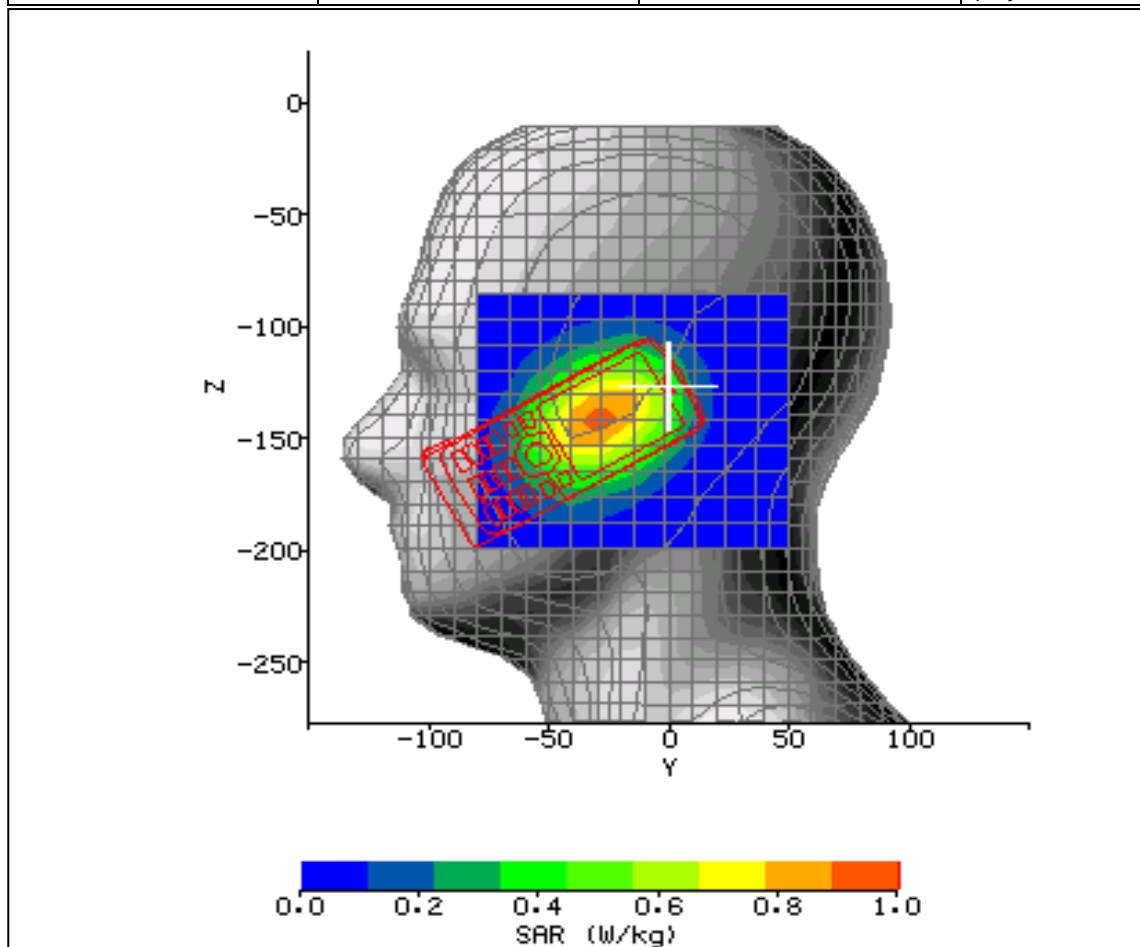


Figure 8: SAR Head Testing Results for the Philips Technologies CT9A9j Mobile Device in LH-Cheek Position; Alkaline battery in; Tested at 836.4MHz (GSM 850 Middle Channel).

SYSTEM / SOFTWARE:	SARA2 / 2.53 VPM	INPUT POWER DRIFT:	0.0 dB
DATE / TIME:	19/02/2008 09:38:12	DUT BATTERY MODEL/NO:	AB0950AWM
FILENAME:	75902829-251000-02.txt	PROBE SERIAL NUMBER:	0187
AMBIENT TEMPERATURE:	23.9°C	LIQUID SIMULANT:	835 Head
DEVICE UNDER TEST:	Philips CT9A9j	RELATIVE PERMITTIVITY:	40.24
RELATIVE HUMIDITY:	21.5%	CONDUCTIVITY:	0.886
PHANTOM S/NO:	Head_04_35.csv	LIQUID TEMPERATURE:	23.5°C
PHANTOM ROTATION:	0°	MAX SAR Y-AXIS LOCATION:	-25.40 mm
DUT POSITION:	LH-Cheek 15° (Alkaline battery in)	MAX SAR Z-AXIS LOCATION:	-142.50 mm
ANTENNA CONFIGURATION:	Fixed Internal	MAX E FIELD:	26.83 V/m
TEST FREQUENCY:	836.4MHz	SAR 1g:	0.666 W/kg
AIR FACTORS:	346 / 439 / 415	SAR 10g:	0.472 W/kg
CONVERSION FACTORS:	0.318 / 0.318 / 0.318	SAR START:	0.307 W/kg
TYPE OF MODULATION:	GMSK (GSM Voice Mode)	SAR END:	0.313 W/kg
MODN. DUTY CYCLE:	12.5%	SAR DRIFT DURING SCAN:	2.07 %
DIODE COMPRESSION FACTORS (V*200):	20 / 20 / 20	PROBE BATTERY LAST CHANGED:	19/02/08
INPUT POWER LEVEL:	28.08 dBm	EXTRAPOLATION:	poly4

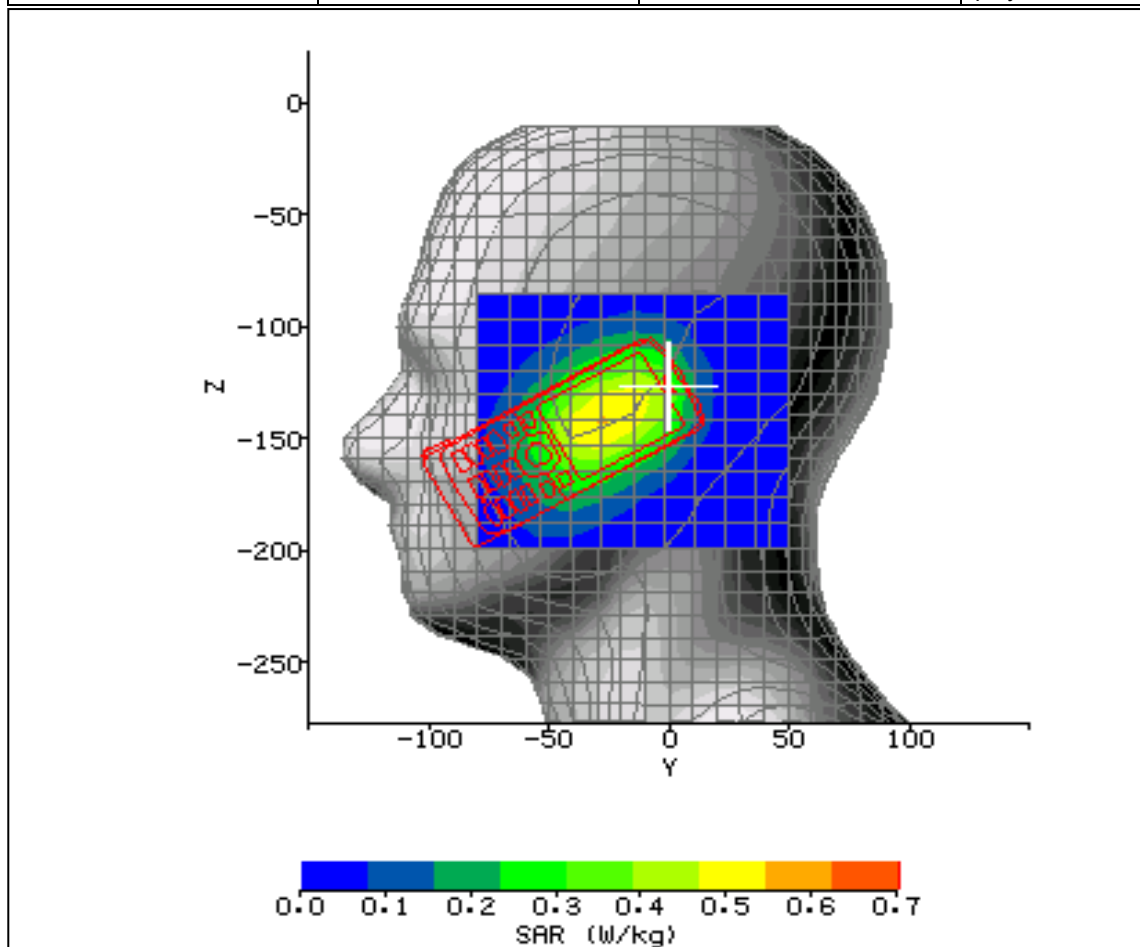


Figure 9: SAR Head Testing Results for the Philips Technologies CT9A9j Mobile Device in LH-Cheek 15° Position; Alkaline battery in; Tested at 836.4MHz (GSM 850 Middle Channel).

SYSTEM / SOFTWARE:	SARA2 / 2.53 VPM	INPUT POWER DRIFT:	0.0 dB
DATE / TIME:	19/02/2008 10:08:44	DUT BATTERY MODEL/NO:	AB0950AWM
FILENAME:	75902829-251000-03.txt	PROBE SERIAL NUMBER:	0187
AMBIENT TEMPERATURE:	24.1°C	LIQUID SIMULANT:	835 Head
DEVICE UNDER TEST:	Philips CT9A9j	RELATIVE PERMITTIVITY:	40.24
RELATIVE HUMIDITY:	20.6%	CONDUCTIVITY:	0.886
PHANTOM S/NO:	Head_04_35.csv	LIQUID TEMPERATURE:	23.4°C
PHANTOM ROTATION:	180°	MAX SAR Y-AXIS LOCATION:	22.80 mm
DUT POSITION:	RH-Cheek (Alkaline battery in)	MAX SAR Z-AXIS LOCATION:	-136.75 mm
ANTENNA CONFIGURATION:	Fixed Internal	MAX E FIELD:	41.60 V/m
TEST FREQUENCY:	836.4MHz	SAR 1g:	1.388 W/kg
AIR FACTORS:	346 / 439 / 415	SAR 10g:	0.968 W/kg
CONVERSION FACTORS:	0.318 / 0.318 / 0.318	SAR START:	0.630 W/kg
TYPE OF MODULATION:	GMSK (GSM Voice Mode)	SAR END:	0.620 W/kg
MODN. DUTY CYCLE:	12.5%	SAR DRIFT DURING SCAN:	-1.56 %
DIODE COMPRESSION FACTORS (V*200):	20 / 20 / 20	PROBE BATTERY LAST CHANGED:	19/02/08
INPUT POWER LEVEL:	28.08 dBm	EXTRAPOLATION:	poly4

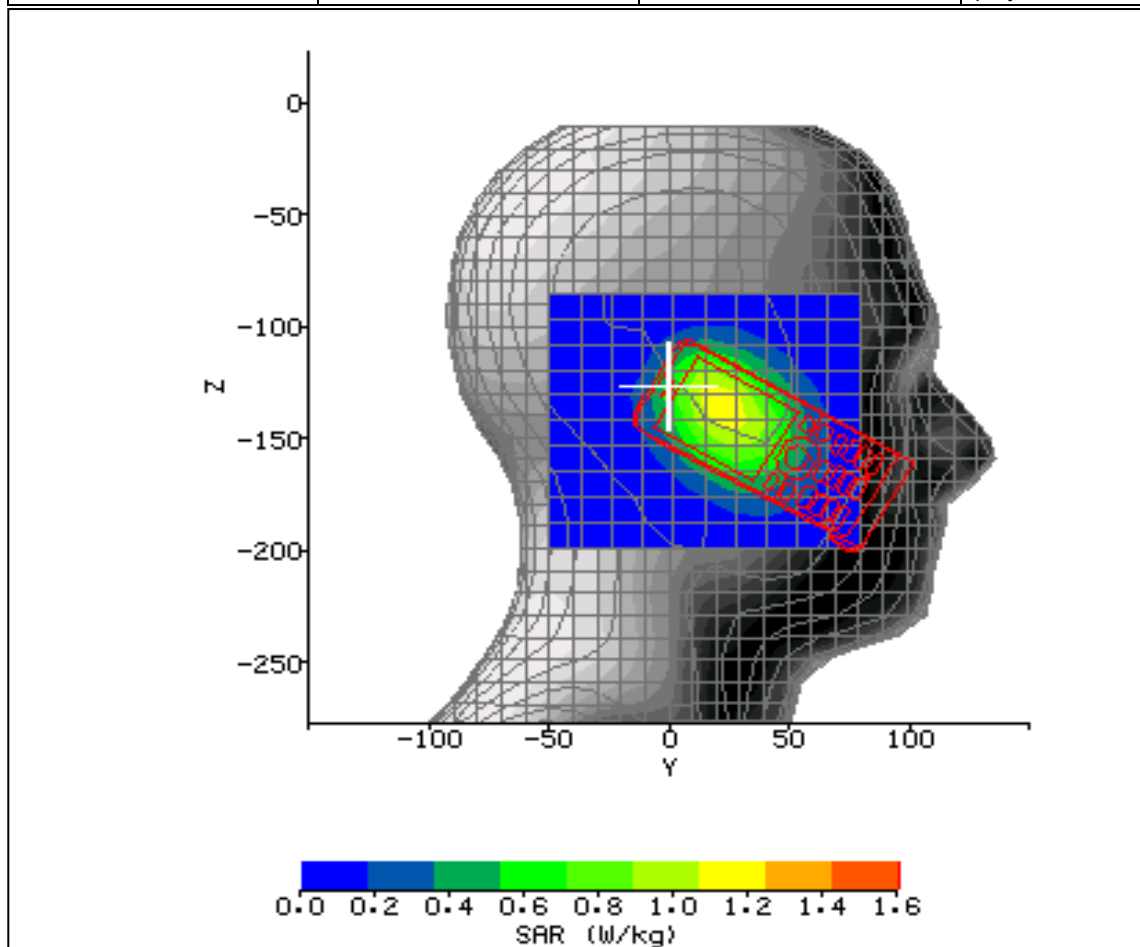


Figure 10: SAR Head Testing Results for the Philips Technologies CT9A9j Mobile Device in RH-Cheek Position; Alkaline battery in; Tested at 836.4MHz (GSM 850 Middle Channel).

SYSTEM / SOFTWARE:	SARA2 / 2.53 VPM	INPUT POWER DRIFT:	0.0 dB
DATE / TIME:	19/02/2008 10:50:03	DUT BATTERY MODEL/NO:	AB0950AWM
FILENAME:	75902829-251000-04.txt	PROBE SERIAL NUMBER:	0187
AMBIENT TEMPERATURE:	23.8°C	LIQUID SIMULANT:	835 Head
DEVICE UNDER TEST:	Philips CT9A9j	RELATIVE PERMITTIVITY:	40.24
RELATIVE HUMIDITY:	20.9%	CONDUCTIVITY:	0.886
PHANTOM S/NO:	Head_04_35.csv	LIQUID TEMPERATURE:	23.4°C
PHANTOM ROTATION:	180°	MAX SAR Y-AXIS LOCATION:	18.90 mm
DUT POSITION:	RH-Cheek 15° (Alkaline battery in)	MAX SAR Z-AXIS LOCATION:	-134.45 mm
ANTENNA CONFIGURATION:	Fixed Internal	MAX E FIELD:	28.74 V/m
TEST FREQUENCY:	836.4MHz	SAR 1g:	0.690 W/kg
AIR FACTORS:	346 / 439 / 415	SAR 10g:	0.495 W/kg
CONVERSION FACTORS:	0.318 / 0.318 / 0.318	SAR START:	0.323 W/kg
TYPE OF MODULATION:	GMSK (GSM Voice Mode)	SAR END:	0.327 W/kg
MODN. DUTY CYCLE:	12.5%	SAR DRIFT DURING SCAN:	1.25 %
DIODE COMPRESSION FACTORS (V*200):	20 / 20 / 20	PROBE BATTERY LAST CHANGED:	19/02/08
INPUT POWER LEVEL:	28.08 dBm	EXTRAPOLATION:	poly4

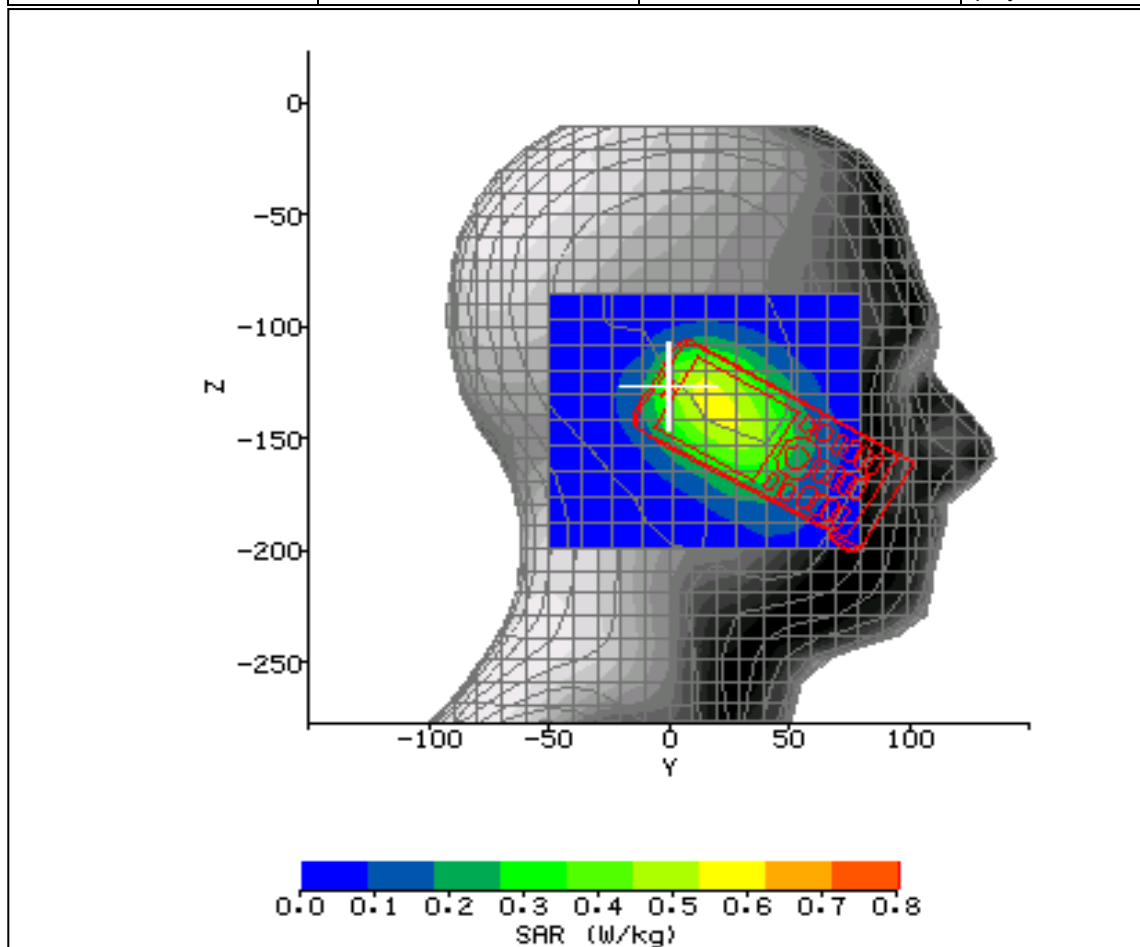


Figure 11: SAR Head Testing Results for the Philips Technologies CT9A9j Mobile Device in RH-Cheek 15° Position; Alkaline battery in; Tested at 836.4MHz (GSM 850 Middle Channel).

SYSTEM / SOFTWARE:	SARA2 / 2.53 VPM	INPUT POWER DRIFT:	0.0 dB
DATE / TIME:	19/02/2008 11:22:06	DUT BATTERY MODEL/NO:	AB0950AWM
FILENAME:	75902829-251000-05.txt	PROBE SERIAL NUMBER:	0187
AMBIENT TEMPERATURE:	23.6°C	LIQUID SIMULANT:	835 Head
DEVICE UNDER TEST:	Philips CT9A9j	RELATIVE PERMITTIVITY:	40.24
RELATIVE HUMIDITY:	20.7%	CONDUCTIVITY:	0.886
PHANTOM S/NO:	Head_04_35.csv	LIQUID TEMPERATURE:	23.4°C
PHANTOM ROTATION:	180°	MAX SAR Y-AXIS LOCATION:	25.40 mm
DUT POSITION:	RH-Cheek (Alkaline battery in)	MAX SAR Z-AXIS LOCATION:	-140.20 mm
ANTENNA CONFIGURATION:	Fixed Internal	MAX E FIELD:	43.55 V/m
TEST FREQUENCY:	824.2MHz	SAR 1g:	1.494 W/kg
AIR FACTORS:	346 / 439 / 415	SAR 10g:	1.045 W/kg
CONVERSION FACTORS:	0.318 / 0.318 / 0.318	SAR START:	0.695 W/kg
TYPE OF MODULATION:	GMSK (GSM Voice Mode)	SAR END:	0.691 W/kg
MODN. DUTY CYCLE:	12.5%	SAR DRIFT DURING SCAN:	-0.51 %
DIODE COMPRESSION FACTORS (V*200):	20 / 20 / 20	PROBE BATTERY LAST CHANGED:	19/02/08
INPUT POWER LEVEL:	28.49 dBm	EXTRAPOLATION:	poly4

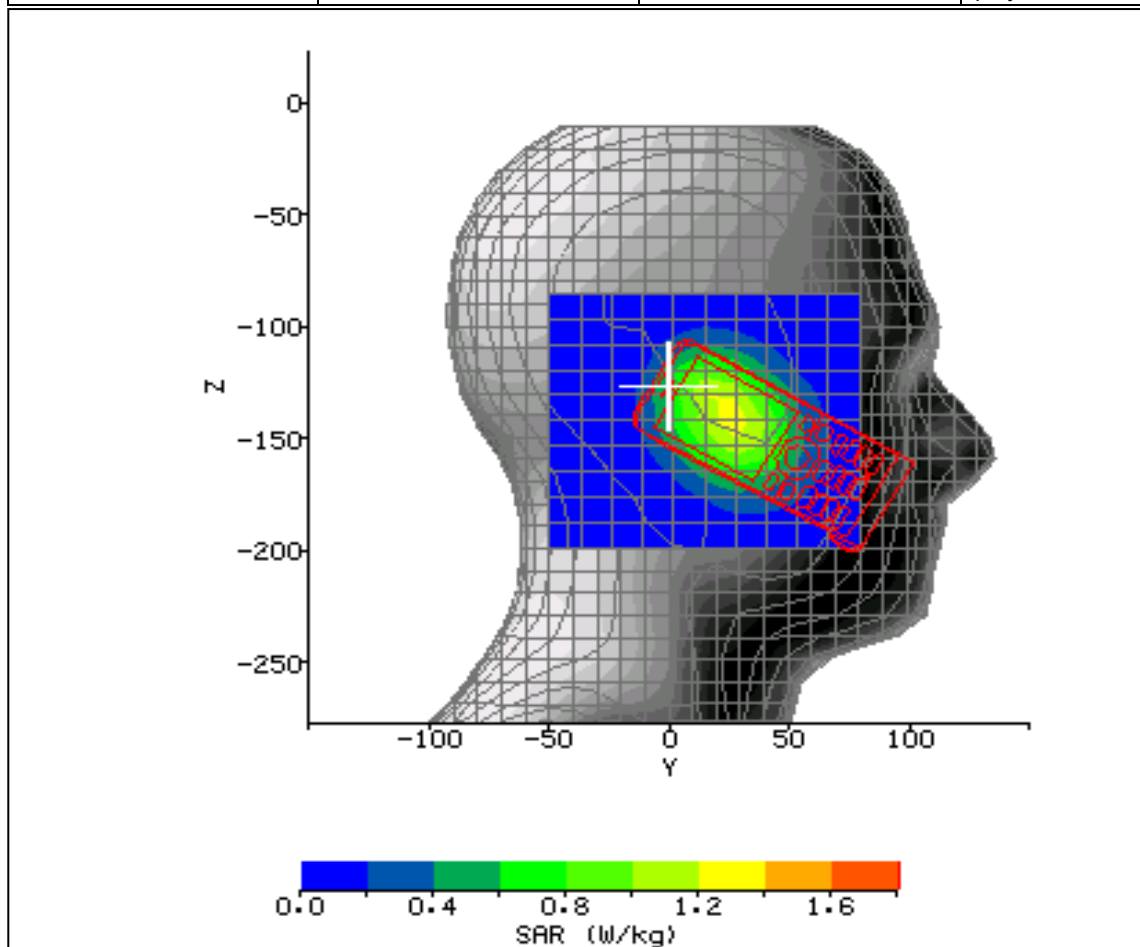


Figure 12: SAR Head Testing Results for the Philips Technologies CT9A9j Mobile Device in RH-Cheek Position; Alkaline battery in; Tested at 824.2MHz (GSM 850 Low Channel).

SYSTEM / SOFTWARE:	SARA2 / 2.53 VPM	INPUT POWER DRIFT:	0.0 dB
DATE / TIME:	19/02/2008 13:02:10	DUT BATTERY MODEL/NO:	AB0950AWM
FILENAME:	75902829-251000-06.txt	PROBE SERIAL NUMBER:	0187
AMBIENT TEMPERATURE:	22.8°C	LIQUID SIMULANT:	835 Head
DEVICE UNDER TEST:	Philips CT9A9j	RELATIVE PERMITTIVITY:	40.24
RELATIVE HUMIDITY:	20.9%	CONDUCTIVITY:	0.886
PHANTOM S/NO:	Head_04_35.csv	LIQUID TEMPERATURE:	23.3°C
PHANTOM ROTATION:	180°	MAX SAR Y-AXIS LOCATION:	25.40 mm
DUT POSITION:	RH-Cheek (Alkaline battery in)	MAX SAR Z-AXIS LOCATION:	-139.05 mm
ANTENNA CONFIGURATION:	Fixed Internal	MAX E FIELD:	40.06 V/m
TEST FREQUENCY:	848.8MHz	SAR 1g:	1.385 W/kg
AIR FACTORS:	346 / 439 / 415	SAR 10g:	0.980 W/kg
CONVERSION FACTORS:	0.318 / 0.318 / 0.318	SAR START:	0.654 W/kg
TYPE OF MODULATION:	GMSK (GSM Voice Mode)	SAR END:	0.648 W/kg
MODN. DUTY CYCLE:	12.5%	SAR DRIFT DURING SCAN:	-1.00 %
DIODE COMPRESSION FACTORS (V*200):	20 / 20 / 20	PROBE BATTERY LAST CHANGED:	19/02/08
INPUT POWER LEVEL:	28.95 dBm	EXTRAPOLATION:	poly4

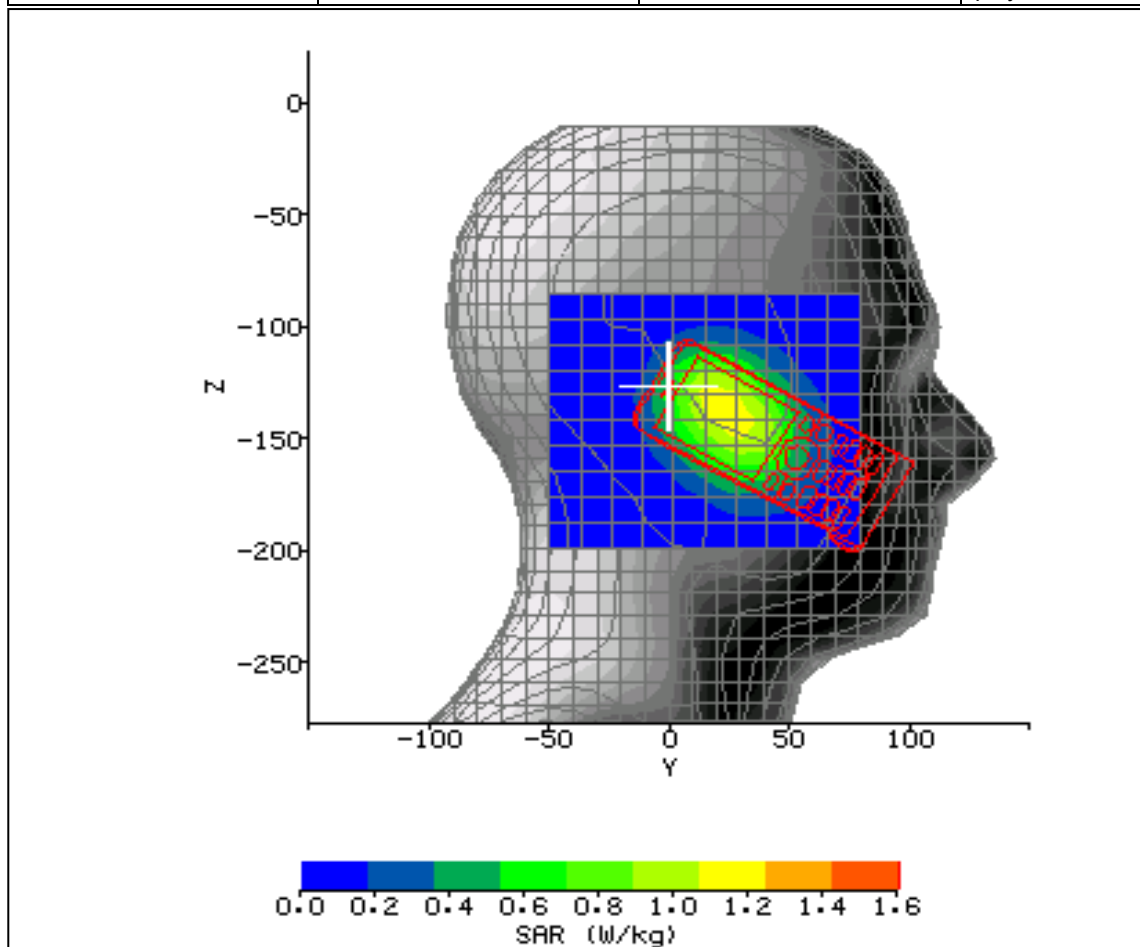


Figure 13: SAR Head Testing Results for the Philips Technologies CT9A9j Mobile Device
RH-Cheek Position; Alkaline battery in; Tested at 848.8MHz (GSM 850 High Channel).

SYSTEM / SOFTWARE:	SARA2 / 2.53 VPM	INPUT POWER DRIFT:	0.0 dB
DATE / TIME:	19/02/2008 13:39:23	DUT BATTERY MODEL/NO:	AB0950AWM
FILENAME:	75902829-251000-07.txt	PROBE SERIAL NUMBER:	0187
AMBIENT TEMPERATURE:	22.8°C	LIQUID SIMULANT:	835 Head
DEVICE UNDER TEST:	Philips CT9A9j	RELATIVE PERMITTIVITY:	40.24
RELATIVE HUMIDITY:	21.2%	CONDUCTIVITY:	0.886
PHANTOM S/NO:	Head_04_35.csv	LIQUID TEMPERATURE:	23.3°C
PHANTOM ROTATION:	180°	MAX SAR Y-AXIS LOCATION:	22.80 mm
DUT POSITION:	RH-Cheek (Alkaline battery out)	MAX SAR Z-AXIS LOCATION:	-135.60 mm
ANTENNA CONFIGURATION:	Fixed Internal	MAX E FIELD:	43.70 V/m
TEST FREQUENCY:	824.2MHz	SAR 1g:	1.559 W/kg
AIR FACTORS:	346 / 439 / 415	SAR 10g:	1.086 W/kg
CONVERSION FACTORS:	0.318 / 0.318 / 0.318	SAR START:	0.701 W/kg
TYPE OF MODULATION:	GMSK (GSM Voice Mode)	SAR END:	0.701 W/kg
MODN. DUTY CYCLE:	12.5%	SAR DRIFT DURING SCAN:	0.03 %
DIODE COMPRESSION FACTORS (V*200):	20 / 20 / 20	PROBE BATTERY LAST CHANGED:	19/02/08
INPUT POWER LEVEL:	28.49 dBm	EXTRAPOLATION:	poly4

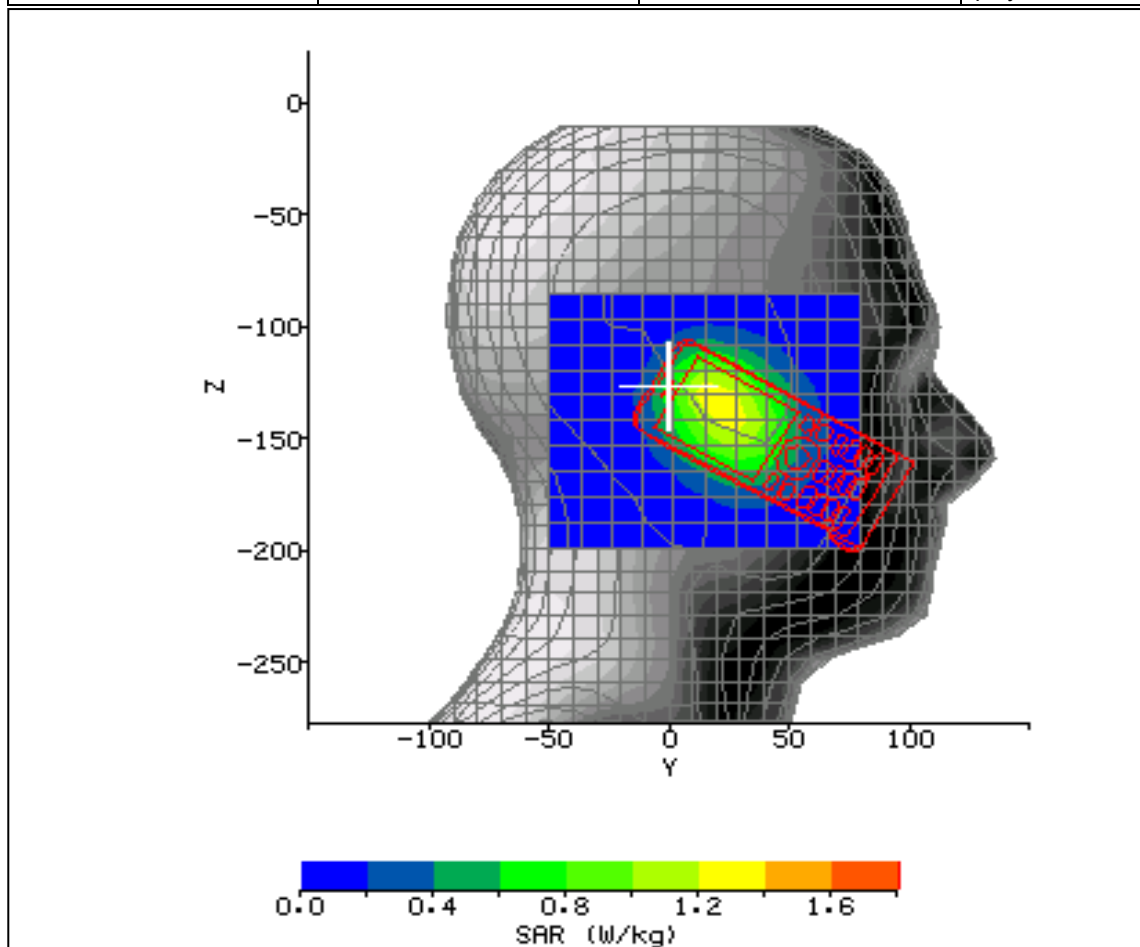


Figure 14: SAR Head Testing Results for the Philips Technologies CT9A9j Mobile Device in RH-Cheek Position; Alkaline battery out; Tested at 824.2MHz (GSM 850 Low Channel).

2.3 GSM850 BODY SAR TEST RESULTS AND COURSE AREA SCANS – 2D

SYSTEM / SOFTWARE:	SARA2 / 2.53 VPM	INPUT POWER DRIFT:	0.0 dB
DATE / TIME:	20/02/2008 13:51:20	DUT BATTERY MODEL/NO:	AB0950AWM
FILENAME:	75902829-251000-15.txt	PROBE SERIAL NUMBER:	0187
AMBIENT TEMPERATURE:	23.7°C	LIQUID SIMULANT:	835 Body
DEVICE UNDER TEST:	Philips CT9A9j	RELATIVE PERMITTIVITY:	57.98
RELATIVE HUMIDITY:	21.5%	CONDUCTIVITY:	0.989
PHANTOM S/NO:	HeadBox01.csv	LIQUID TEMPERATURE:	23.2°C
PHANTOM ROTATION:	0°	MAX SAR X-AXIS LOCATION:	2.00 mm
DUT POSITION:	Front facing 15mm separation	MAX SAR Y-AXIS LOCATION:	2.00 mm
ANTENNA CONFIGURATION:	Internal Fixed	MAX E FIELD:	27.78 V/m
TEST FREQUENCY:	836.4MHz	SAR 1g:	0.867 W/kg
AIR FACTORS:	346 / 439 / 415	SAR 10g:	0.622 W/kg
CONVERSION FACTORS:	0.318 / 0.318 / 0.318	SAR START:	0.297 W/kg
TYPE OF MODULATION:	GMSK (GPRS Mode)	SAR END:	0.286 W/kg
MODN. DUTY CYCLE:	25%	SAR DRIFT DURING SCAN:	-3.53 %
DIODE COMPRESSION FACTORS (V*200):	20 / 20 / 20	PROBE BATTERY LAST CHANGED:	20/02/2008
INPUT POWER LEVEL:	28.08 dBm	EXTRAPOLATION:	poly4

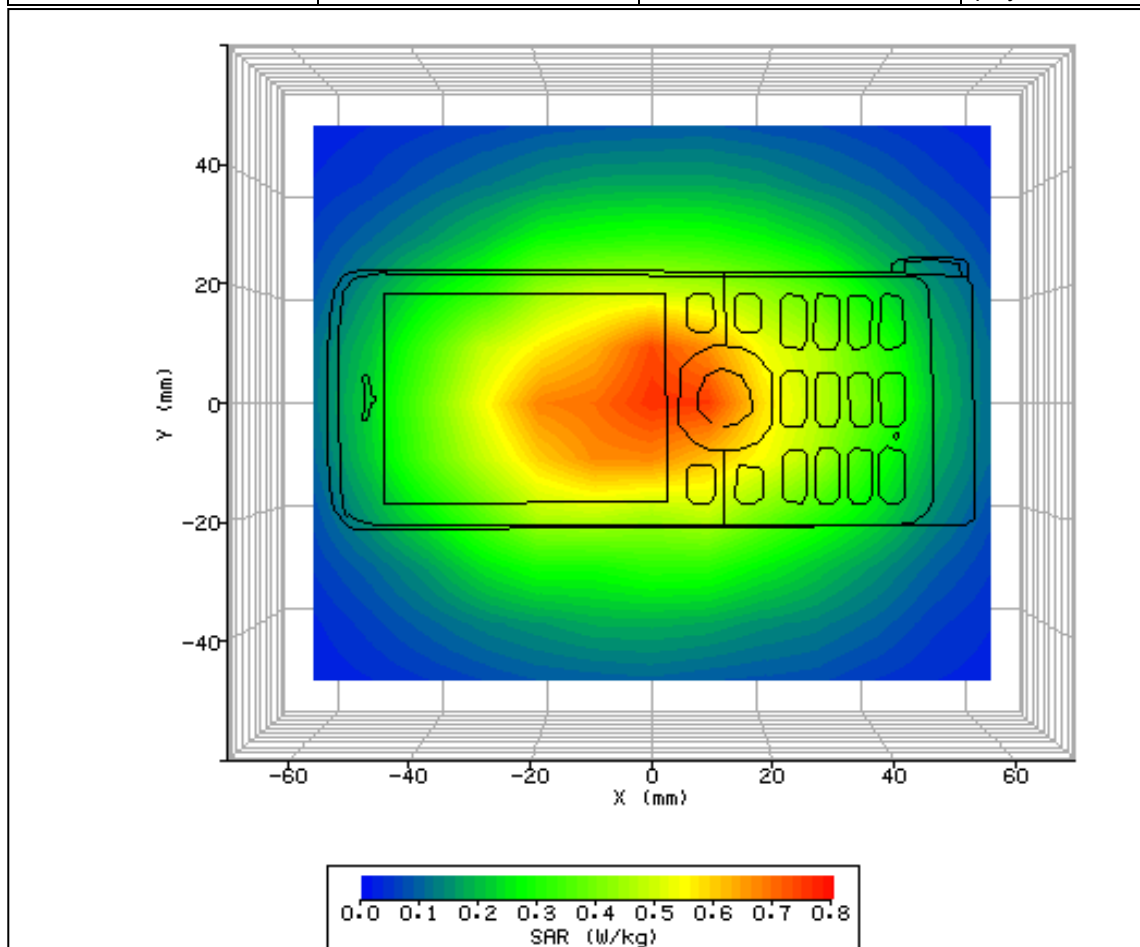


Figure 15: SAR Body Testing Results for the Philips Technologies CT9A9j Mobile Device in Front Facing Phantom Position; Alkaline battery in; Tested at 836.4MHz (GSM 850 Middle Channel) with 15mm Separation Distance to the Phantom.

SYSTEM / SOFTWARE:	SARA2 / 2.53 VPM	INPUT POWER DRIFT:	0.0 dB
DATE / TIME:	20/02/2008 14:22:37	DUT BATTERY MODEL/NO:	AB0950AWM
FILENAME:	75902829-251000-16.txt	PROBE SERIAL NUMBER:	0187
AMBIENT TEMPERATURE:	23.5°C	LIQUID SIMULANT:	835 Body
DEVICE UNDER TEST:	Philips CT9A9j	RELATIVE PERMITTIVITY:	57.98
RELATIVE HUMIDITY:	20.20%	CONDUCTIVITY:	0.989
PHANTOM S/NO:	HeadBox1.csv	LIQUID TEMPERATURE:	23.2°C
PHANTOM ROTATION:	0°	MAX SAR X-AXIS LOCATION:	3.00 mm
DUT POSITION:	Rear facing 15mm separation	MAX SAR Y-AXIS LOCATION:	2.00 mm
ANTENNA CONFIGURATION:	Fixed Internal	MAX E FIELD:	29.03 V/m
TEST FREQUENCY:	836.4MHz	SAR 1g:	0.948 W/kg
AIR FACTORS:	346 / 439 / 415	SAR 10g:	0.677 W/kg
CONVERSION FACTORS:	0.318 / 0.318 / 0.318	SAR START:	0.319 W/kg
TYPE OF MODULATION:	GMSK (GPRS Mode)	SAR END:	0.318 W/kg
MODN. DUTY CYCLE:	25%	SAR DRIFT DURING SCAN:	-0.15 %
DIODE COMPRESSION FACTORS (V*200):	20 / 20 / 20	PROBE BATTERY LAST CHANGED:	20/02/08
INPUT POWER LEVEL:	28.08 dBm	EXTRAPOLATION:	poly4

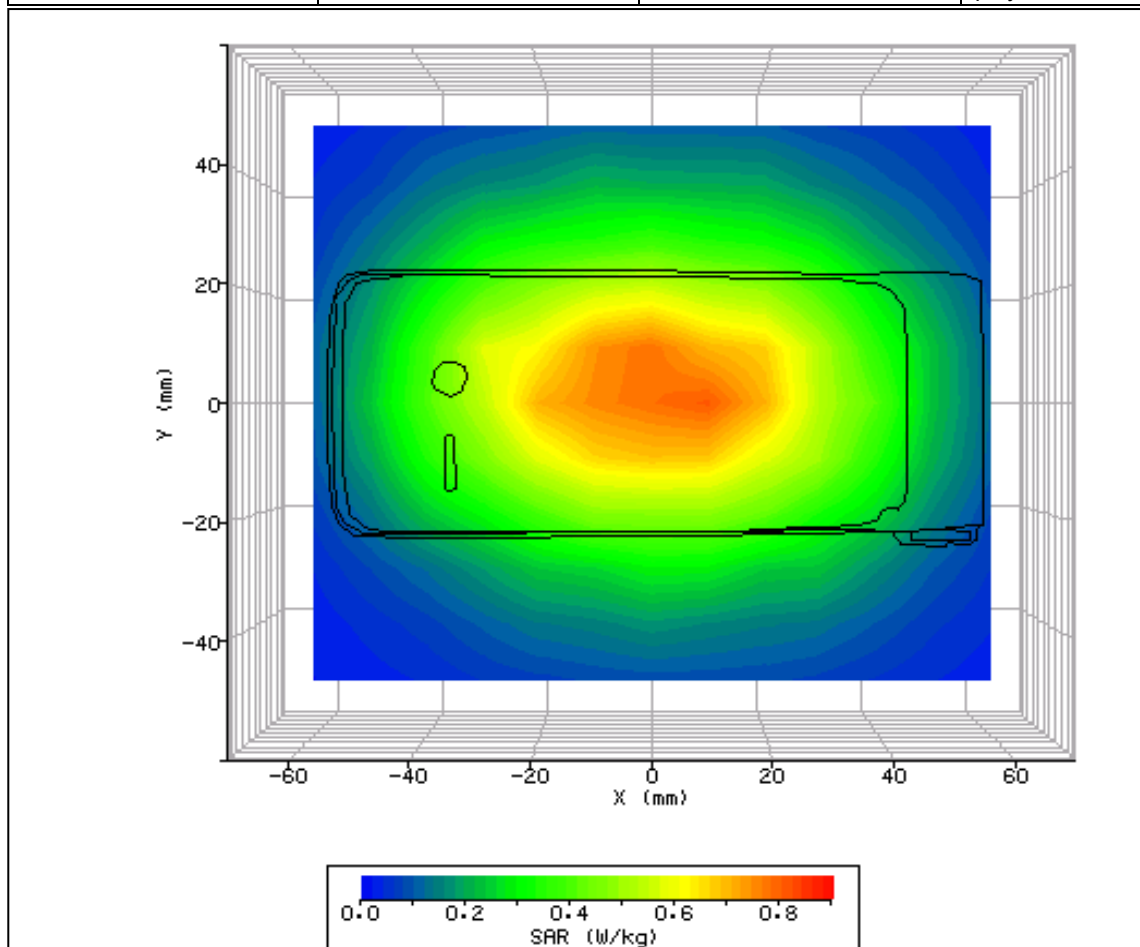


Figure 16: SAR Body Testing Results for the Philips Technologies CT9A9j Mobile Device in Rear Facing Phantom Position; Alkaline battery in; Tested at 836.4MHz (GSM 850 Middle Channel) with 15mm Separation Distance to the Phantom.

SYSTEM / SOFTWARE:	SARA2 / 2.53 VPM	INPUT POWER DRIFT:	0.0 dB
DATE / TIME:	20/02/2008 15:12:02	DUT BATTERY MODEL/NO:	AB0950AWM
FILENAME:	75902829-251000-17.txt	PROBE SERIAL NUMBER:	0187
AMBIENT TEMPERATURE:	23.2°C	LIQUID SIMULANT:	835 Body
DEVICE UNDER TEST:	Philips CT9A9j	RELATIVE PERMITTIVITY:	57.98
RELATIVE HUMIDITY:	27.9%	CONDUCTIVITY:	0.989
PHANTOM S/NO:	HeadBox1.csv	LIQUID TEMPERATURE:	23.2°C
PHANTOM ROTATION:	0°	MAX SAR X-AXIS LOCATION:	3.00 mm
DUT POSITION:	Rear facing 15mm separation	MAX SAR Y-AXIS LOCATION:	2.00 mm
ANTENNA CONFIGURATION:	Fixed Internal	MAX E FIELD:	30.59 V/m
TEST FREQUENCY:	824.2MHz	SAR 1g:	1.035 W/kg
AIR FACTORS:	346 / 439 / 415	SAR 10g:	0.752 W/kg
CONVERSION FACTORS:	0.318 / 0.318 / 0.318	SAR START:	0.352 W/kg
TYPE OF MODULATION:	GMSK (GPRS Mode)	SAR END:	0.349 W/kg
MODN. DUTY CYCLE:	25%	SAR DRIFT DURING SCAN:	-1.02 %
DIODE COMPRESSION FACTORS (V*200):	20 / 20 / 20	PROBE BATTERY LAST CHANGED:	20/02/08
INPUT POWER LEVEL:	28.49 dBm	EXTRAPOLATION:	poly4

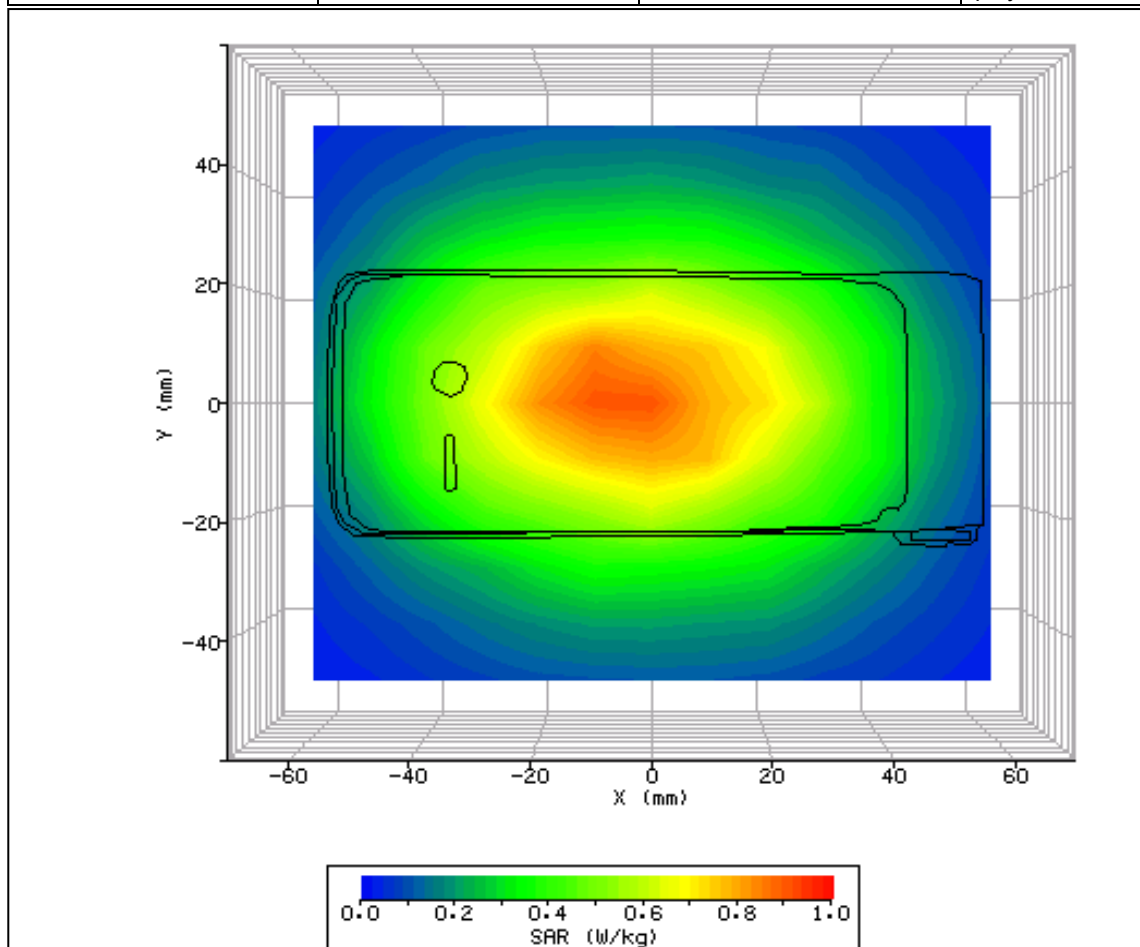


Figure 17: SAR SAR Body Testing Results for the Philips Technologies CT9A9j Mobile Device in Rear Facing Phantom Position; Alkaline battery in; Tested at 824.2MHz (GSM 850 Low Channel) with 15mm Separation Distance to the Phantom.

SYSTEM / SOFTWARE:	SARA2 / 2.53 VPM	INPUT POWER DRIFT:	0.0 dB
DATE / TIME:	20/02/2008 15:48:41	DUT BATTERY MODEL/NO:	AB0950AWM
FILENAME:	75902829-251000-18.txt	PROBE SERIAL NUMBER:	0187
AMBIENT TEMPERATURE:	23.7°C	LIQUID SIMULANT:	835 Body
DEVICE UNDER TEST:	Philips CT9A9j	RELATIVE PERMITTIVITY:	57.98
RELATIVE HUMIDITY:	27.1%	CONDUCTIVITY:	0.989
PHANTOM S/NO:	HeadBox1.csv	LIQUID TEMPERATURE:	23.2°C
PHANTOM ROTATION:	0°	MAX SAR X-AXIS LOCATION:	-6.00 mm
DUT POSITION:	Rear facing 15mm separation	MAX SAR Y-AXIS LOCATION:	1.00 mm
ANTENNA CONFIGURATION:	Fixed Internal	MAX E FIELD:	27.97 V/m
TEST FREQUENCY:	848.8MHz	SAR 1g:	0.863 W/kg
AIR FACTORS:	346 / 439 / 415	SAR 10g:	0.630 W/kg
CONVERSION FACTORS:	0.318 / 0.318 / 0.318	SAR START:	0.295 W/kg
TYPE OF MODULATION:	GMSK (GPRS Mode)	SAR END:	0.300 W/kg
MODN. DUTY CYCLE:	25%	SAR DRIFT DURING SCAN:	1.67 %
DIODE COMPRESSION FACTORS (V*200):	20 / 20 / 20	PROBE BATTERY LAST CHANGED:	20/02/08
INPUT POWER LEVEL:	28.95 dBm	EXTRAPOLATION:	poly4

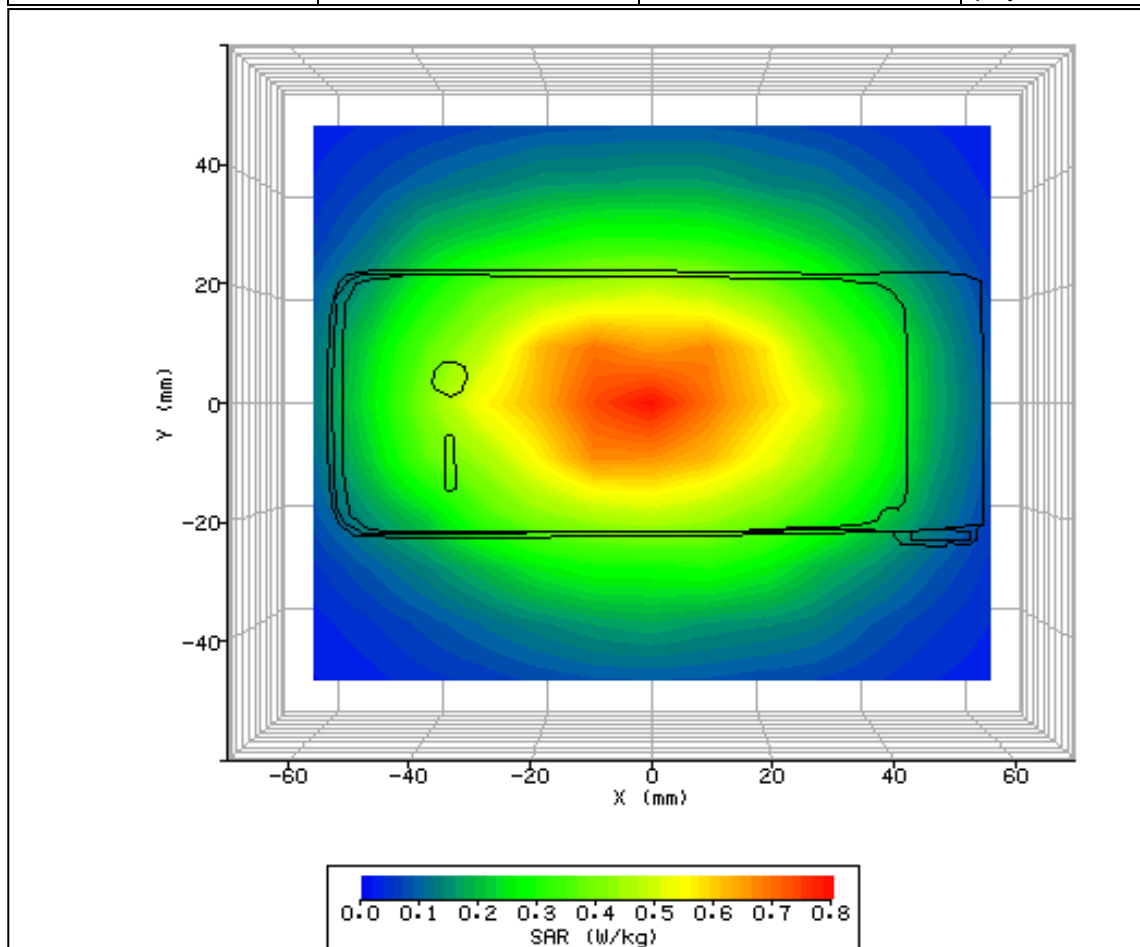


Figure 18: SAR Body Testing Results for the Philips Technologies CT9A9j Mobile Device in Rear Facing Phantom Position; Alkaline battery in; Tested at 848.8MHz (GSM 850 High Channel) with 15mm Separation Distance to the Phantom.

SYSTEM / SOFTWARE:	SARA2 / 2.53 VPM	INPUT POWER DRIFT:	0.0 dB
DATE / TIME:	20/02/2008 16:26:04	DUT BATTERY MODEL/NO:	AB0950AWM
FILENAME:	75902829-251000-19.txt	PROBE SERIAL NUMBER:	0187
AMBIENT TEMPERATURE:	23.3°C	LIQUID SIMULANT:	835 Body
DEVICE UNDER TEST:	Philips CT9A9j	RELATIVE PERMITTIVITY:	57.98
RELATIVE HUMIDITY:	27.5%	CONDUCTIVITY:	0.989
PHANTOM S/NO:	HeadBox1.csv	LIQUID TEMPERATURE:	23.2°C
PHANTOM ROTATION:	0°	MAX SAR X-AXIS LOCATION:	-8.00 mm
DUT POSITION:	Rear facing 15mm separation	MAX SAR Y-AXIS LOCATION:	2.00 mm
ANTENNA CONFIGURATION:	Fixed Internal	MAX E FIELD:	29.58 V/m
TEST FREQUENCY:	824.2MHz	SAR 1g:	0.993 W/kg
AIR FACTORS:	346 / 439 / 415	SAR 10g:	0.702 W/kg
CONVERSION FACTORS:	0.318 / 0.318 / 0.318	SAR START:	0.333 W/kg
TYPE OF MODULATION:	GMSK (GPRS Mode)	SAR END:	0.326 W/kg
MODN. DUTY CYCLE:	25%	SAR DRIFT DURING SCAN:	-2.03 %
DIODE COMPRESSION FACTORS (V*200):	20 / 20 / 20	PROBE BATTERY LAST CHANGED:	20/02/08
INPUT POWER LEVEL:	28.49 dBm	EXTRAPOLATION:	poly4

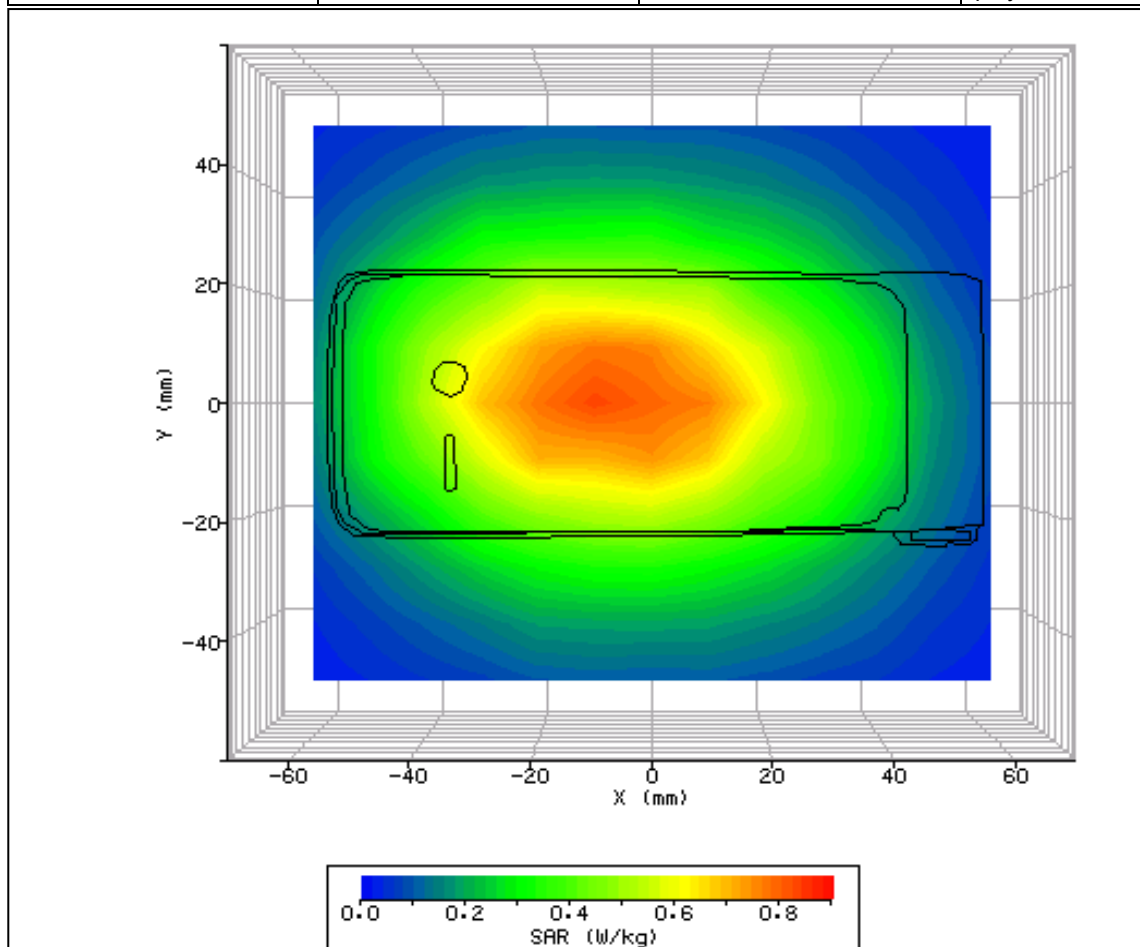


Figure 19: SAR Body Testing Results for the Philips Technologies CT9A9j Mobile Device in Rear Facing Phantom Position; Alkaline battery out; Tested at 824.2MHz (GSM 850 Low Channel) with 15mm Separation Distance to the Phantom.

2.4 PCS1900 HEAD SAR TEST RESULTS AND COURSE AREA SCANS – 2D

SYSTEM / SOFTWARE:	SARA2 / 2.53 VPM	INPUT POWER DRIFT:	0.0 dB
DATE / TIME:	21/02/2008 09:57:32	DUT BATTERY MODEL/NO:	AB0950AWM
FILENAME:	75902829-251000-08.txt	PROBE SERIAL NUMBER:	0187
AMBIENT TEMPERATURE:	23.1°C	LIQUID SIMULANT:	1900 Head
DEVICE UNDER TEST:	Philips CT9A9j	RELATIVE PERMITTIVITY:	40.45
RELATIVE HUMIDITY:	33.9%	CONDUCTIVITY:	1.429
PHANTOM S/NO:	HeadFT04.csv	LIQUID TEMPERATURE:	22.7°C
PHANTOM ROTATION:	0°	MAX SAR Y-AXIS LOCATION:	-11.10 mm
DUT POSITION:	LH-Cheek (Alkaline Battery in)	MAX SAR Z-AXIS LOCATION:	-120.65 mm
ANTENNA CONFIGURATION:	Internal Fixed	MAX E FIELD:	9.03 V/m
TEST FREQUENCY:	1880.0MHz	SAR 1g:	0.120 W/kg
AIR FACTORS:	346 / 439 / 415	SAR 10g:	0.062 W/kg
CONVERSION FACTORS:	0.376 / 0.376 / 0.376	SAR START:	0.000 W/kg
TYPE OF MODULATION:	GMSK (GSM Voice Mode)	SAR END:	0.000 W/kg
MODN. DUTY CYCLE:	12.5%	SAR DRIFT DURING SCAN:	0.00 %
DIODE COMPRESSION FACTORS (V*200):	20 / 20 / 20	PROBE BATTERY LAST CHANGED:	21/02/2008
INPUT POWER LEVEL:	23.48 dBm	EXTRAPOLATION:	poly4

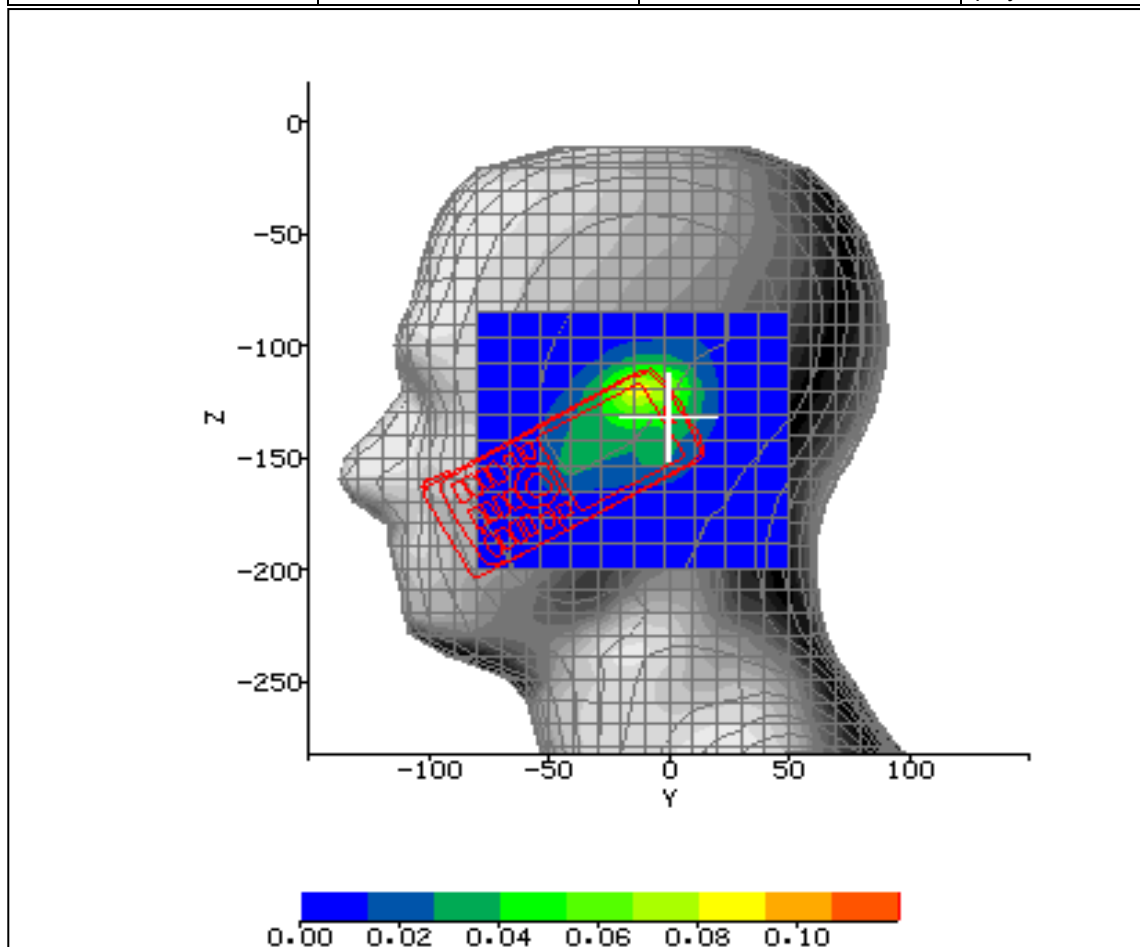


Figure 20: SAR Head Testing Results for the Philips Technologies CT9A9j Mobile Device in LH-Cheek Position; Alkaline battery in; Tested at 1880.0MHz (PCS1900 Middle Channel).

SYSTEM / SOFTWARE:	SARA2 / 2.53 VPM	INPUT POWER DRIFT:	0.0 dB
DATE / TIME:	21/02/2008 10:30:08	DUT BATTERY MODEL/NO:	AB0950AWM
FILENAME:	75902829-251000-09.txt	PROBE SERIAL NUMBER:	0187
AMBIENT TEMPERATURE:	23.2°C	LIQUID SIMULANT:	1900 Head
DEVICE UNDER TEST:	Philips CT9A9j	RELATIVE PERMITTIVITY:	40.45
RELATIVE HUMIDITY:	30.1%	CONDUCTIVITY:	1.537
PHANTOM S/NO:	HeadFT04.csv	LIQUID TEMPERATURE:	22.7°C
PHANTOM ROTATION:	0°	MAX SAR Y-AXIS LOCATION:	-5.90 mm
DUT POSITION:	LH-Cheek 15° (Alkaline battery in)	MAX SAR Z-AXIS LOCATION:	-122.95 mm
ANTENNA CONFIGURATION:	Fixed Internal	MAX E FIELD:	11.09 V/m
TEST FREQUENCY:	1880.0MHz	SAR 1g:	0.182 W/kg
AIR FACTORS:	346 / 439 / 415	SAR 10g:	0.095 W/kg
CONVERSION FACTORS:	0.440 / 0.440 / 0.440	SAR START:	0.052 W/kg
TYPE OF MODULATION:	GMSK (GSM Voice Mode)	SAR END:	0.050 W/kg
MODN. DUTY CYCLE:	12.5%	SAR DRIFT DURING SCAN:	-4.41 %
DIODE COMPRESSION FACTORS (V*200):	20 / 20 / 20	PROBE BATTERY LAST CHANGED:	22/02/08
INPUT POWER LEVEL:	23.48 dBm	EXTRAPOLATION:	poly4

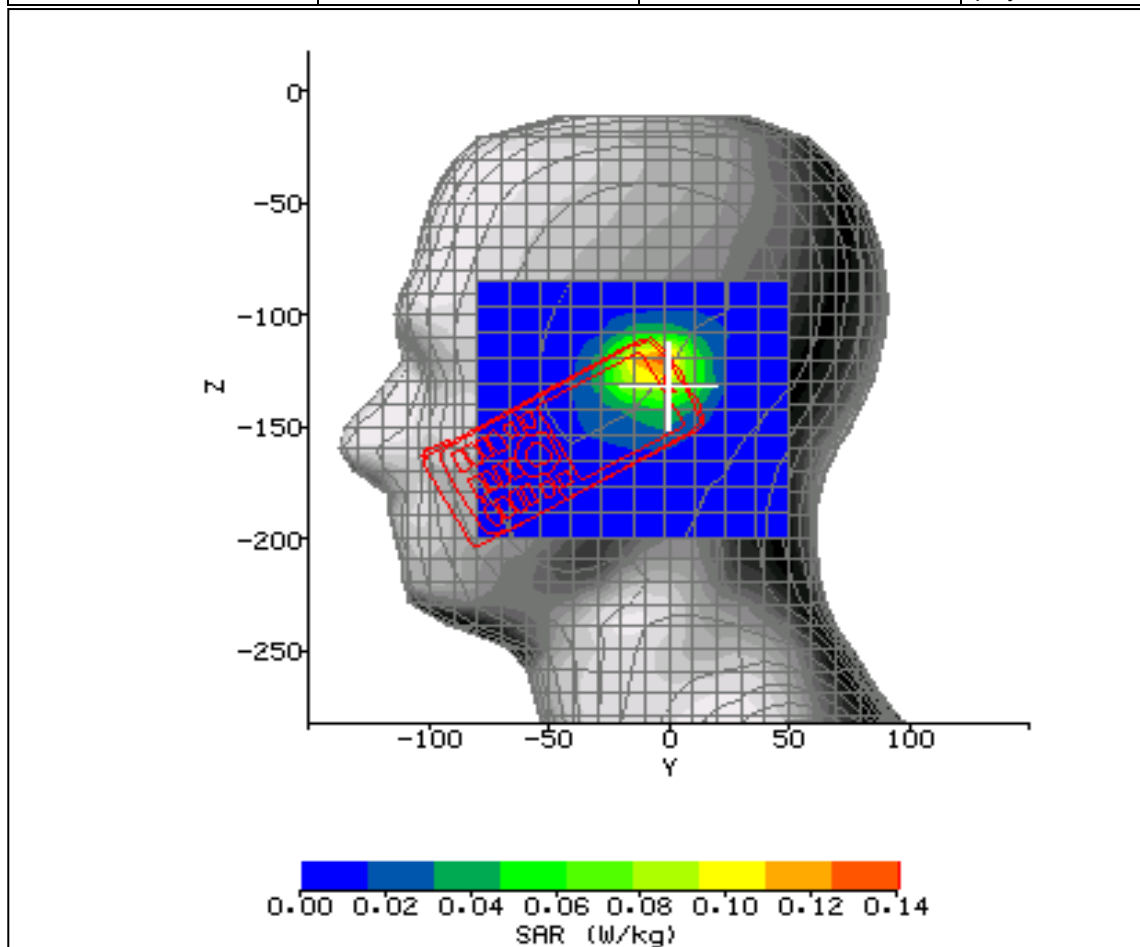


Figure 21: SAR Head Testing Results for the Philips Technologies CT9A9j Mobile Device in LH-Cheek 15° Position; Alkaline battery in; Tested at 1880.0MHz (PCS1900 Middle Channel).

SYSTEM / SOFTWARE:	SARA2 / 2.53 VPM	INPUT POWER DRIFT:	0.0 dB
DATE / TIME:	21/02/2008 12:00:06	DUT BATTERY MODEL/NO:	AB0950AWM
FILENAME:	75902829-251000-10.txt	PROBE SERIAL NUMBER:	0187
AMBIENT TEMPERATURE:	23.0°C	LIQUID SIMULANT:	1900 Head
DEVICE UNDER TEST:	Philips CT9A9j	RELATIVE PERMITTIVITY:	40.45
RELATIVE HUMIDITY:	30.10%	CONDUCTIVITY:	1.429
PHANTOM S/NO:	HeadFT04.csv	LIQUID TEMPERATURE:	22.7°C
PHANTOM ROTATION:	180°	MAX SAR Y-AXIS LOCATION:	4.60 mm
DUT POSITION:	RH-Cheek (Alkaline Battery in)	MAX SAR Z-AXIS LOCATION:	-134.45 mm
ANTENNA CONFIGURATION:	Internal Fixed	MAX E FIELD:	8.21 V/m
TEST FREQUENCY:	1880.0MHz	SAR 1g:	0.080 W/kg
AIR FACTORS:	346 / 439 / 415	SAR 10g:	0.045 W/kg
CONVERSION FACTORS:	0.376 / 0.376 / 0.376	SAR START:	0.025 W/kg
TYPE OF MODULATION:	GMSK (GSM Voice Mode)	SAR END:	0.024 W/kg
MODN. DUTY CYCLE:	12.5%	SAR DRIFT DURING SCAN:	-3.79 %
DIODE COMPRESSION FACTORS (V*200):	20 / 20 / 20	PROBE BATTERY LAST CHANGED:	21/02/2008
INPUT POWER LEVEL:	23.48 dBm	EXTRAPOLATION:	poly4

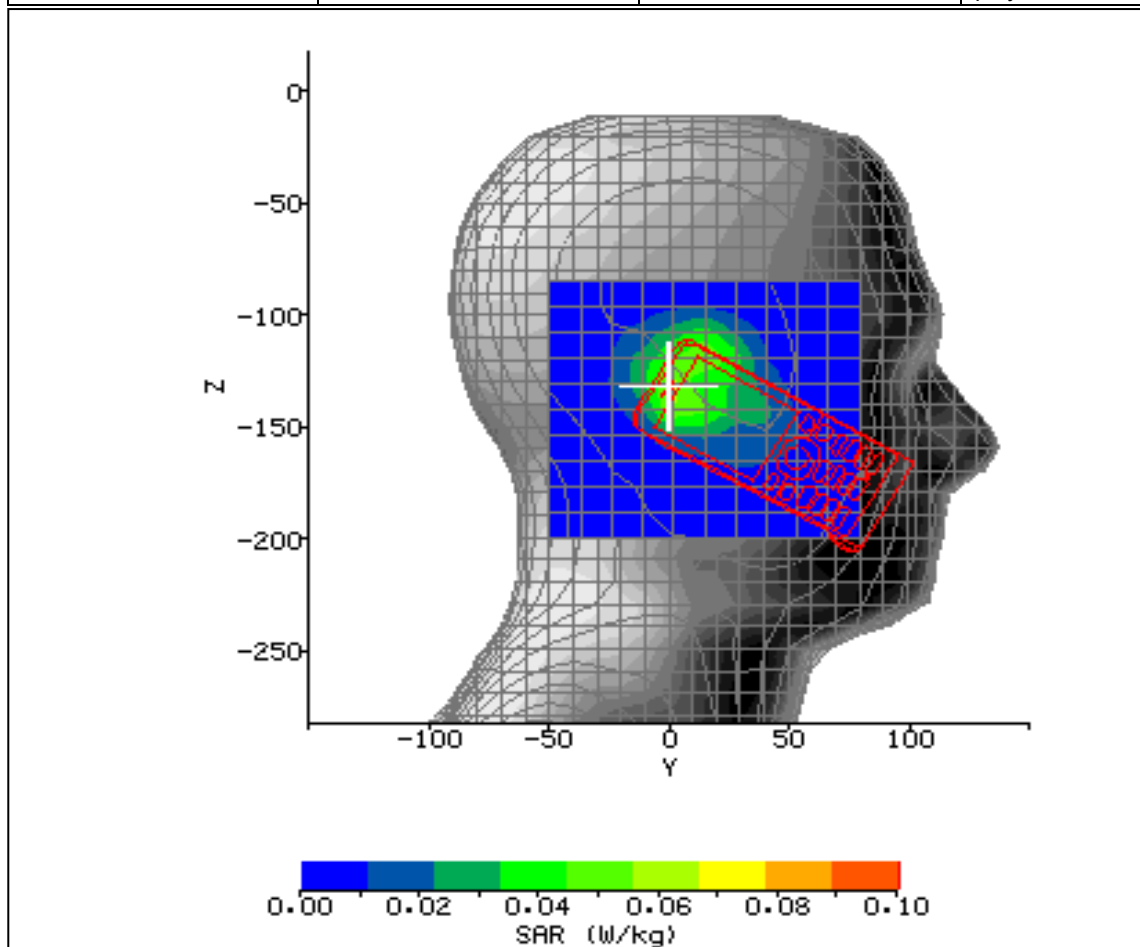


Figure 22: SAR Head Testing Results for the Philips Technologies CT9A9j Mobile Device in RH-Cheek Position; Alkaline battery in; Tested at 1880.0MHz (PCS1800 Middle Channel).

SYSTEM / SOFTWARE:	SARA2 / 2.53 VPM	INPUT POWER DRIFT:	0.0 dB
DATE / TIME:	21/02/2008 12:29:44	DUT BATTERY MODEL/NO:	AB0950AWM
FILENAME:	75902829-251000-11.txt	PROBE SERIAL NUMBER:	0187
AMBIENT TEMPERATURE:	22.9°C	LIQUID SIMULANT:	1900 Head
DEVICE UNDER TEST:	Philips CT9A9j	RELATIVE PERMITTIVITY:	40.45
RELATIVE HUMIDITY:	27.9%	CONDUCTIVITY:	1.429
PHANTOM S/NO:	HeadFT04.csv	LIQUID TEMPERATURE:	22.7°C
PHANTOM ROTATION:	180°	MAX SAR Y-AXIS LOCATION:	3.30 mm
DUT POSITION:	RH-Cheek 15° (Alkaline Battery in)	MAX SAR Z-AXIS LOCATION:	-128.70 mm
ANTENNA CONFIGURATION:	Internal Fixed	MAX E FIELD:	8.54 V/m
TEST FREQUENCY:	1880.0MHz	SAR 1g:	0.107 W/kg
AIR FACTORS:	346 / 439 / 415	SAR 10g:	0.061 W/kg
CONVERSION FACTORS:	0.376 / 0.376 / 0.376	SAR START:	0.032 W/kg
TYPE OF MODULATION:	GMSK (GSM Voice Mode)	SAR END:	0.031 W/kg
MODN. DUTY CYCLE:	12.5%	SAR DRIFT DURING SCAN:	-2.26 %
DIODE COMPRESSION FACTORS (V*200):	20 / 20 / 20	PROBE BATTERY LAST CHANGED:	21/02/2008
INPUT POWER LEVEL:	23.48 dBm	EXTRAPOLATION:	poly4

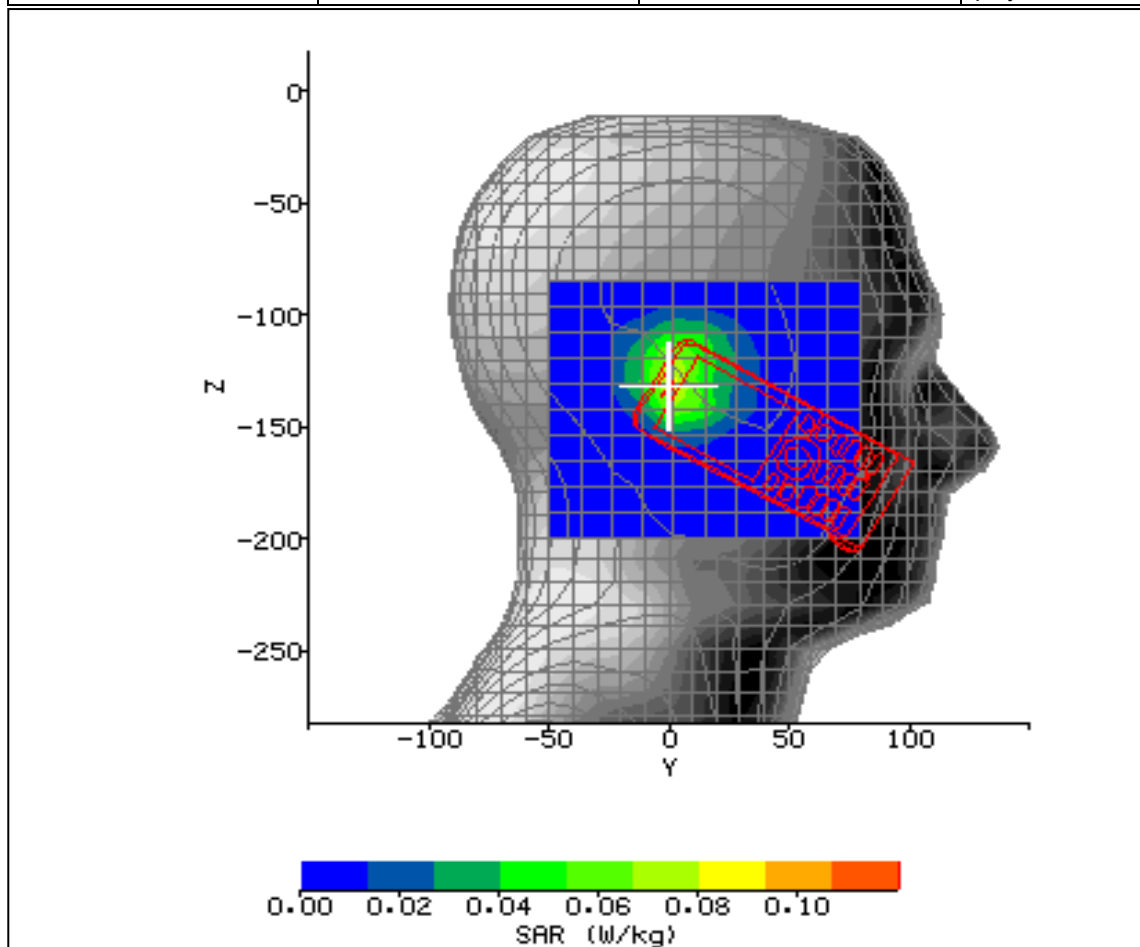


Figure 23: SAR Head Testing Results for the Philips Technologies CT9A9j Mobile Device in RH-Cheek 15° Position; Alkaline battery in; Tested at 1880.0MHz (PCS1900 Middle Channel).

SYSTEM / SOFTWARE:	SARA2 / 2.53 VPM	INPUT POWER DRIFT:	0.0 dB
DATE / TIME:	21/02/2008 15:21:08	DUT BATTERY MODEL/NO:	AB0950AWM
FILENAME:	75902829-251000-12.txt	PROBE SERIAL NUMBER:	0187
AMBIENT TEMPERATURE:	22.7°C	LIQUID SIMULANT:	1900 Head
DEVICE UNDER TEST:	Philips CT9A9j	RELATIVE PERMITTIVITY:	40.45
RELATIVE HUMIDITY:	26.8%	CONDUCTIVITY:	1.429
PHANTOM S/NO:	HeadFT04.csv	LIQUID TEMPERATURE:	22.6°C
PHANTOM ROTATION:	0°	MAX SAR Y-AXIS LOCATION:	-4.60 mm
DUT POSITION:	LH-Cheek 15° (Alkaline Battery in)	MAX SAR Z-AXIS LOCATION:	-122.95 mm
ANTENNA CONFIGURATION:	Internal Fixed	MAX E FIELD:	11.84 V/m
TEST FREQUENCY:	1850.2MHz	SAR 1g:	0.185 W/kg
AIR FACTORS:	346 / 439 / 415	SAR 10g:	0.096 W/kg
CONVERSION FACTORS:	0.376 / 0.376 / 0.376	SAR START:	0.044 W/kg
TYPE OF MODULATION:	GMSK (GSM Voice Mode)	SAR END:	0.043 W/kg
MODN. DUTY CYCLE:	12.5%	SAR DRIFT DURING SCAN:	-0.96 %
DIODE COMPRESSION FACTORS (V*200):	20 / 20 / 20	PROBE BATTERY LAST CHANGED:	21/02/2008
INPUT POWER LEVEL:	25.63 dBm	EXTRAPOLATION:	poly4

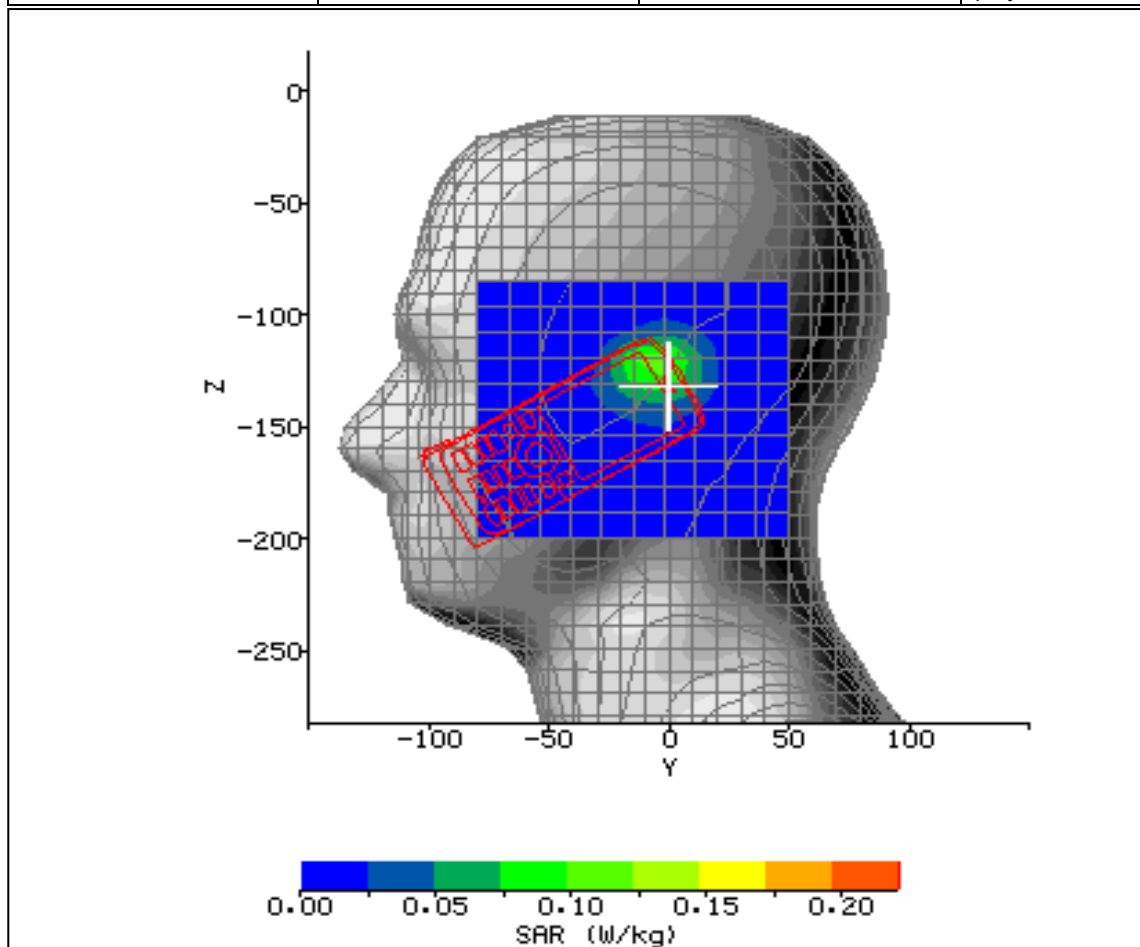


Figure 24: SAR Head Testing Results for the Philips Technologies CT9A9j Mobile Device in LH-Cheek Position 15°; Alkaline battery in; Tested at 1850.2MHz (PCS1900 Low Channel).

SYSTEM / SOFTWARE:	SARA2 / 2.53 VPM	INPUT POWER DRIFT:	0.0 dB
DATE / TIME:	21/02/2008 16:05:35	DUT BATTERY MODEL/NO:	AB0950AWM
FILENAME:	75902829-251000-13.txt	PROBE SERIAL NUMBER:	0187
AMBIENT TEMPERATURE:	22.6°C	LIQUID SIMULANT:	1900 Head
DEVICE UNDER TEST:	Philips CT9A9j	RELATIVE PERMITTIVITY:	40.45
RELATIVE HUMIDITY:	28.9%	CONDUCTIVITY:	1.429
PHANTOM S/NO:	HeadFT04.csv	LIQUID TEMPERATURE:	22.6°C
PHANTOM ROTATION:	0°	MAX SAR Y-AXIS LOCATION:	-5.90 mm
DUT POSITION:	LH-Cheek 15° (Alkaline Battery in)	MAX SAR Z-AXIS LOCATION:	-122.95 mm
ANTENNA CONFIGURATION:	Internal Fixed	MAX E FIELD:	10.76 V/m
TEST FREQUENCY:	1909.8MHz	SAR 1g:	0.168 W/kg
AIR FACTORS:	346 / 439 / 415	SAR 10g:	0.088 W/kg
CONVERSION FACTORS:	0.376 / 0.376 / 0.376	SAR START:	0.045 W/kg
TYPE OF MODULATION:	GMSK (GSM Voice Mode)	SAR END:	0.046 W/kg
MODN. DUTY CYCLE:	12.5%	SAR DRIFT DURING SCAN:	3.28 %
DIODE COMPRESSION FACTORS (V*200):	20 / 20 / 20	PROBE BATTERY LAST CHANGED:	21/02/2008
INPUT POWER LEVEL:	23.82 dBm	EXTRAPOLATION:	poly4

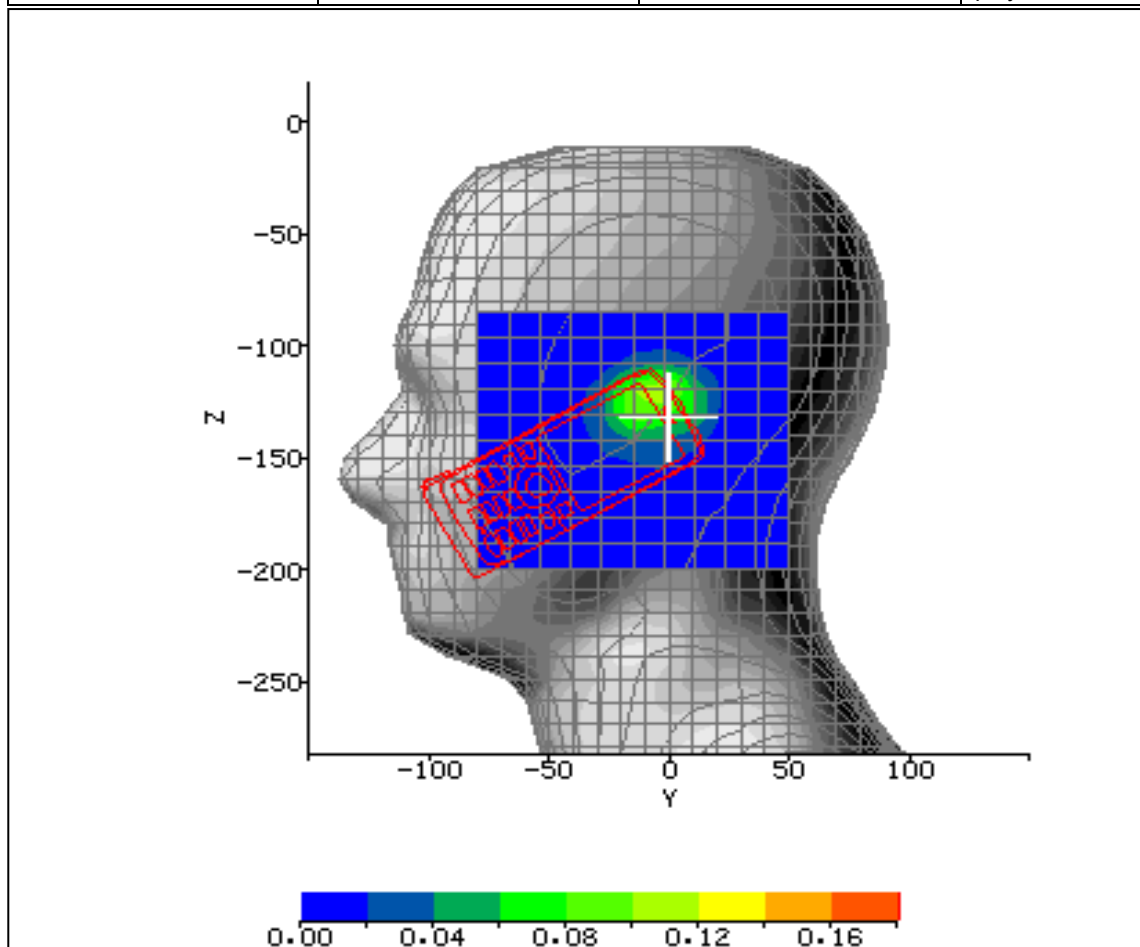


Figure 25: SAR Head Testing Results for the Philips Technologies CT9A9j Mobile Device in LH-Cheek Position 15°; Alkaline battery in; Tested at 1909.8MHz (PCS1900 High Channel).

SYSTEM / SOFTWARE:	SARA2 / 2.53 VPM	INPUT POWER DRIFT:	0.0 dB
DATE / TIME:	21/02/2008 16:37:08	DUT BATTERY MODEL/NO:	AB0950AWM
FILENAME:	75902829-251000-14.txt	PROBE SERIAL NUMBER:	0187
AMBIENT TEMPERATURE:	23.1°C	LIQUID SIMULANT:	1900 Head
DEVICE UNDER TEST:	Philips CT9A9j	RELATIVE PERMITTIVITY:	40.45
RELATIVE HUMIDITY:	29.6%	CONDUCTIVITY:	1.429
PHANTOM S/NO:	HeadFT04.csv	LIQUID TEMPERATURE:	22.5°C
PHANTOM ROTATION:	0°	MAX SAR Y-AXIS LOCATION:	-7.20. mm
DUT POSITION:	LH-Cheek 15° (Alkaline Battery out)	MAX SAR Z-AXIS LOCATION:	-121.80 mm
ANTENNA CONFIGURATION:	Internal Fixed	MAX E FIELD:	10.87 V/m
TEST FREQUENCY:	1850.2MHz	SAR 1g:	0.172 W/kg
AIR FACTORS:	346 / 439 / 415	SAR 10g:	0.092 W/kg
CONVERSION FACTORS:	0.376 / 0.376 / 0.376	SAR START:	0.048 W/kg
TYPE OF MODULATION:	GMSK (GSM Voice Mode)	SAR END:	0.047 W/kg
MODN. DUTY CYCLE:	12.5%	SAR DRIFT DURING SCAN:	-2.29 %
DIODE COMPRESSION FACTORS (V*200):	20 / 20 / 20	PROBE BATTERY LAST CHANGED:	21/02/2008
INPUT POWER LEVEL:	25.63 dBm	EXTRAPOLATION:	poly4

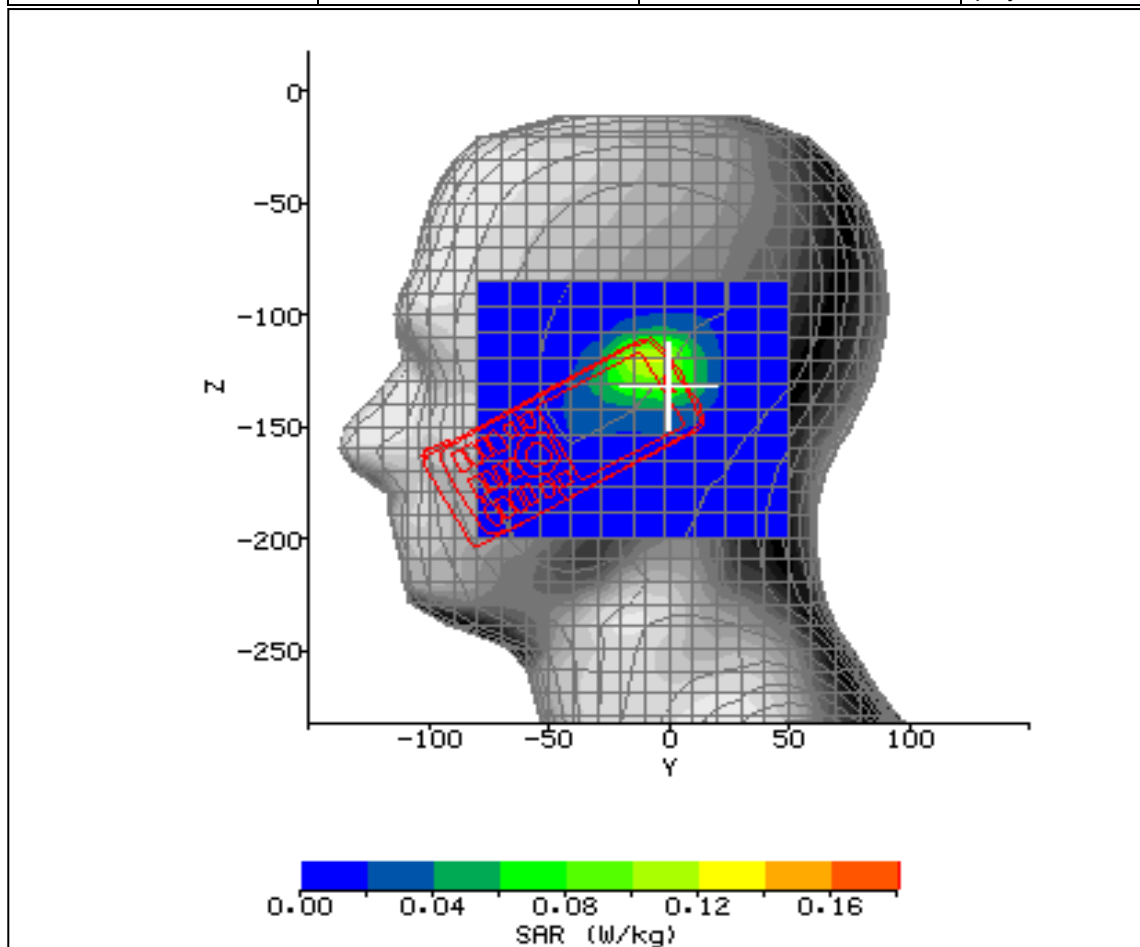


Figure 26: SAR Head Testing Results for the Philips Technologies CT9A9j Mobile Device in LH-Cheek Position 15°; Alkaline battery out; Tested at 1850.2MHz (PCS1900 Low Channel).

2.5 PCS1900 BODY SAR TEST RESULTS AND COURSE AREA SCANS – 2D

SYSTEM / SOFTWARE:	SARA2 / 2.53 VPM	INPUT POWER DRIFT:	0.0 dB
DATE / TIME:	25/02/2008 10:59:42	DUT BATTERY MODEL/NO:	AB0950AWM
FILENAME:	75902829-251000-20.txt	PROBE SERIAL NUMBER:	0187
AMBIENT TEMPERATURE:	23.1°C	LIQUID SIMULANT:	1900 Body
DEVICE UNDER TEST:	Philips CT9A9j	RELATIVE PERMITTIVITY:	53.40
RELATIVE HUMIDITY:	27.6%	CONDUCTIVITY:	1.537
PHANTOM S/NO:	HeadBox1.csv	LIQUID TEMPERATURE:	23.2°C
PHANTOM ROTATION:	0°	MAX SAR X-AXIS LOCATION:	-46.00 mm
DUT POSITION:	Front facing 15mm separation	MAX SAR Y-AXIS LOCATION:	10.00 mm
ANTENNA CONFIGURATION:	Fixed Internal	MAX E FIELD:	3.73 V/m
TEST FREQUENCY:	1880.0MHz	SAR 1g:	0.026 W/kg
AIR FACTORS:	346 / 439 / 415	SAR 10g:	0.016 W/kg
CONVERSION FACTORS:	0.440 / 0.440 / 0.440	SAR START:	0.002 W/kg
TYPE OF MODULATION:	GMSK (GPRS Mode)	SAR END:	0.002 W/kg
MODN. DUTY CYCLE:	25%	SAR DRIFT DURING SCAN:	-12.59 %
DIODE COMPRESSION FACTORS (V*200):	20 / 20 / 20	PROBE BATTERY LAST CHANGED:	22/02/08
INPUT POWER LEVEL:	23.48 dBm	EXTRAPOLATION:	poly4

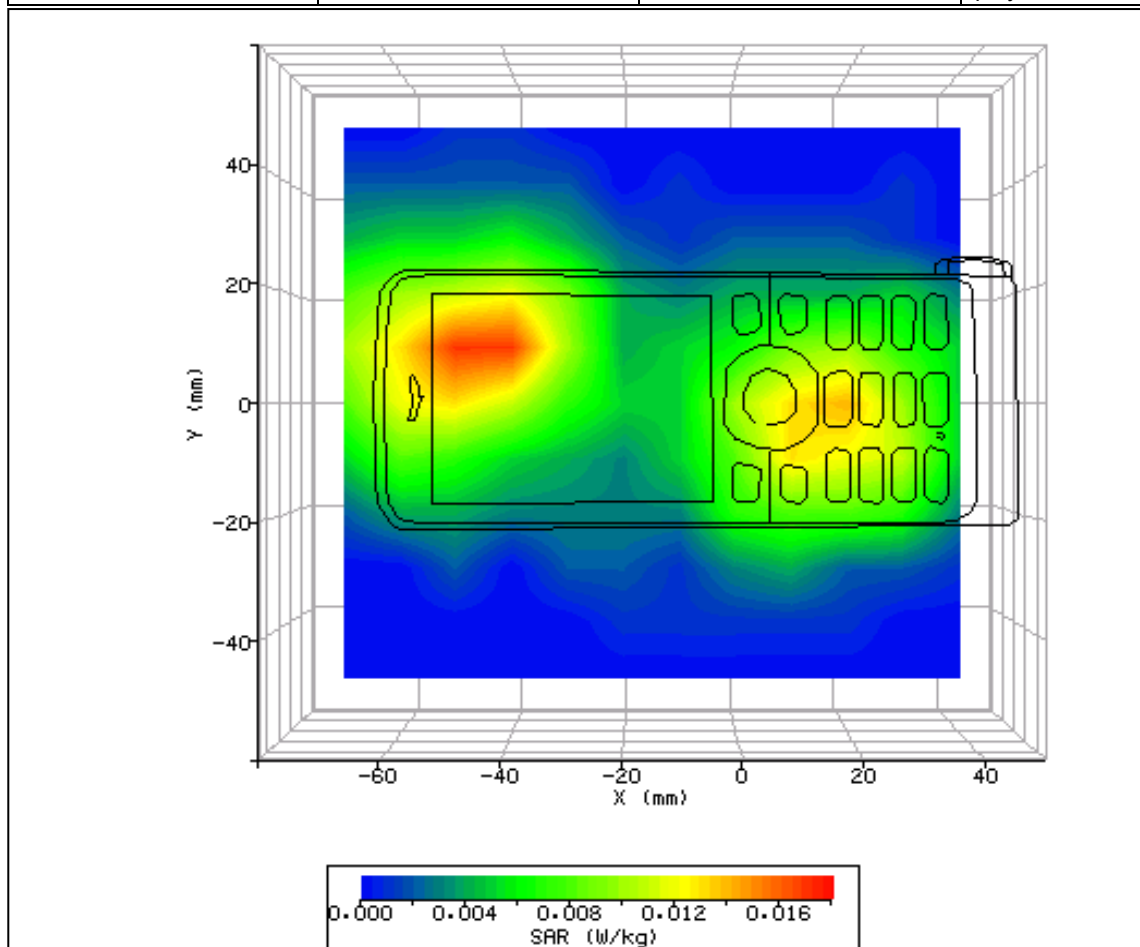


Figure 27: SAR Body Testing Results for the Philips Technologies CT9A9j Mobile Device in Front Facing Phantom Position; Alkaline battery in; Tested at 1880.0MHz (PCS 1900 Middle Channel) with 15mm Separation Distance to the Phantom.

SYSTEM / SOFTWARE:	SARA2 / 2.53 VPM	INPUT POWER DRIFT:	0.0 dB
DATE / TIME:	25/02/2008 12:05:26	DUT BATTERY MODEL/NO:	AB0950AWM
FILENAME:	75902829-251000-21.txt	PROBE SERIAL NUMBER:	0187
AMBIENT TEMPERATURE:	23.3°C	LIQUID SIMULANT:	1900 Body
DEVICE UNDER TEST:	Philips CT9A9j	RELATIVE PERMITTIVITY:	53.40
RELATIVE HUMIDITY:	24.9%	CONDUCTIVITY:	1.537
PHANTOM S/NO:	HeadBox81_0.csv	LIQUID TEMPERATURE:	23.2°C
PHANTOM ROTATION:	0°	MAX SAR X-AXIS LOCATION:	-49.00 mm
DUT POSITION:	Rear facing 15mm separation	MAX SAR Y-AXIS LOCATION:	7.00 mm
ANTENNA CONFIGURATION:	Fixed Internal	MAX E FIELD:	4.83 V/m
TEST FREQUENCY:	1880.0MHz	SAR 1g:	0.043 W/kg
AIR FACTORS:	346 / 439 / 415	SAR 10g:	0.026 W/kg
CONVERSION FACTORS:	0.440 / 0.440 / 0.440	SAR START:	0.006 W/kg
TYPE OF MODULATION:	GMSK (GPRS Mode)	SAR END:	0.006 W/kg
MODN. DUTY CYCLE:	25%	SAR DRIFT DURING SCAN:	-3.52 %
DIODE COMPRESSION FACTORS (V*200):	20 / 20 / 20	PROBE BATTERY LAST CHANGED:	22/02/08
INPUT POWER LEVEL:	23.48 dBm	EXTRAPOLATION:	poly4

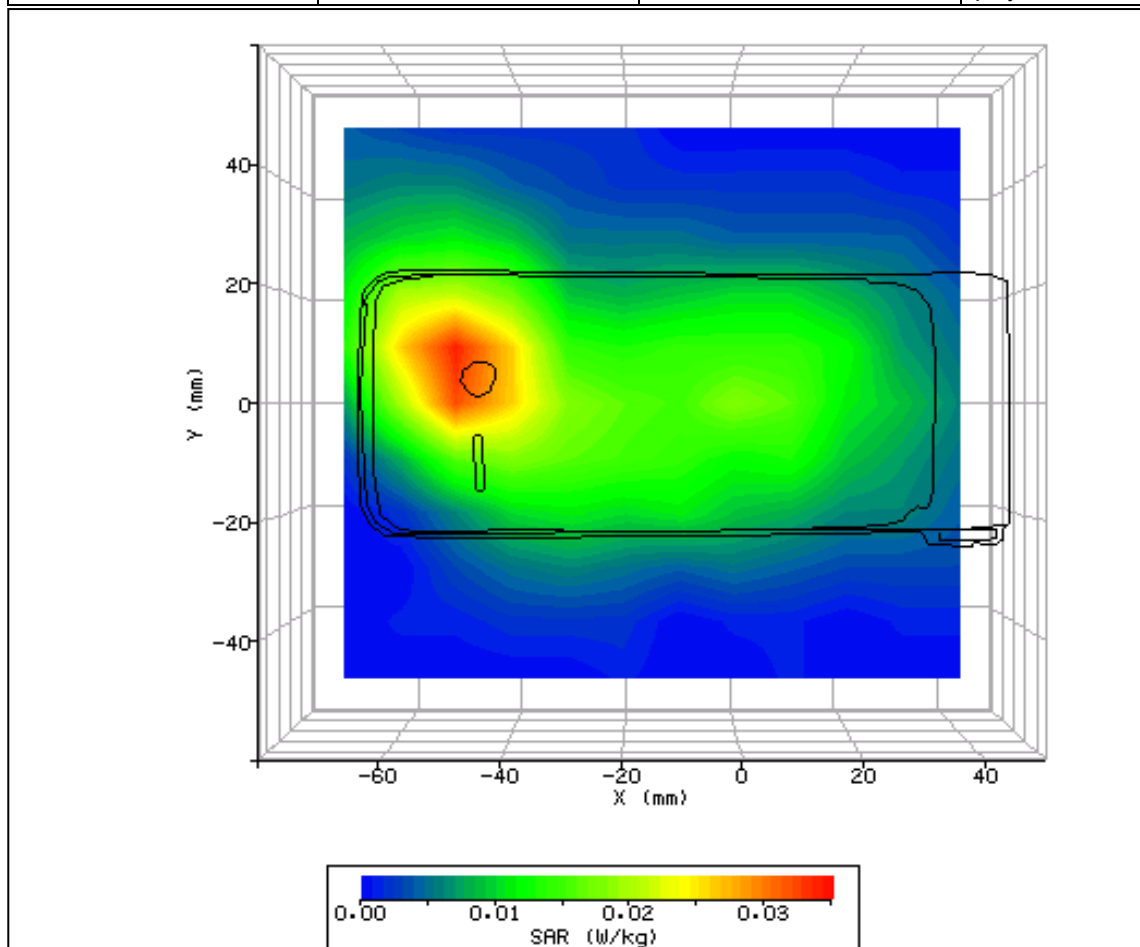


Figure 28: SAR Body Testing Results for the Philips Technologies CT9A9j Mobile Device in Rear Facing Phantom Position; Alkaline battery in; Tested at 1880.0MHz (PCS 1800 Middle Channel) with 15mm Separation Distance to the Phantom.

SYSTEM / SOFTWARE:	SARA2 / 2.53 VPM	INPUT POWER DRIFT:	0.0 dB
DATE / TIME:	25/02/2008 13:37:53	DUT BATTERY MODEL/NO:	AB0950AWM
FILENAME:	75902829-251000-22.txt	PROBE SERIAL NUMBER:	0187
AMBIENT TEMPERATURE:	22.7°C	LIQUID SIMULANT:	1900 Body
DEVICE UNDER TEST:	Philips CT9A9j	RELATIVE PERMITTIVITY:	53.40
RELATIVE HUMIDITY:	26.1%	CONDUCTIVITY:	1.537
PHANTOM S/NO:	HeadBox81_0.csv	LIQUID TEMPERATURE:	23.2°C
PHANTOM ROTATION:	0°	MAX SAR X-AXIS LOCATION:	-50.00 mm
DUT POSITION:	Rear facing 15mm separation	MAX SAR Y-AXIS LOCATION:	7.00 mm
ANTENNA CONFIGURATION:	Fixed Internal	MAX E FIELD:	5.26 V/m
TEST FREQUENCY:	1850.2MHz	SAR 1g:	0.052 W/kg
AIR FACTORS:	346 / 439 / 415	SAR 10g:	0.031 W/kg
CONVERSION FACTORS:	0.440 / 0.440 / 0.440	SAR START:	0.009 W/kg
TYPE OF MODULATION:	GMSK (GPRS Mode)	SAR END:	0.008 W/kg
MODN. DUTY CYCLE:	25%	SAR DRIFT DURING SCAN:	-7.62 %
DIODE COMPRESSION FACTORS (V*200):	20 / 20 / 20	PROBE BATTERY LAST CHANGED:	22/02/08
INPUT POWER LEVEL:	25.63 dBm	EXTRAPOLATION:	poly4

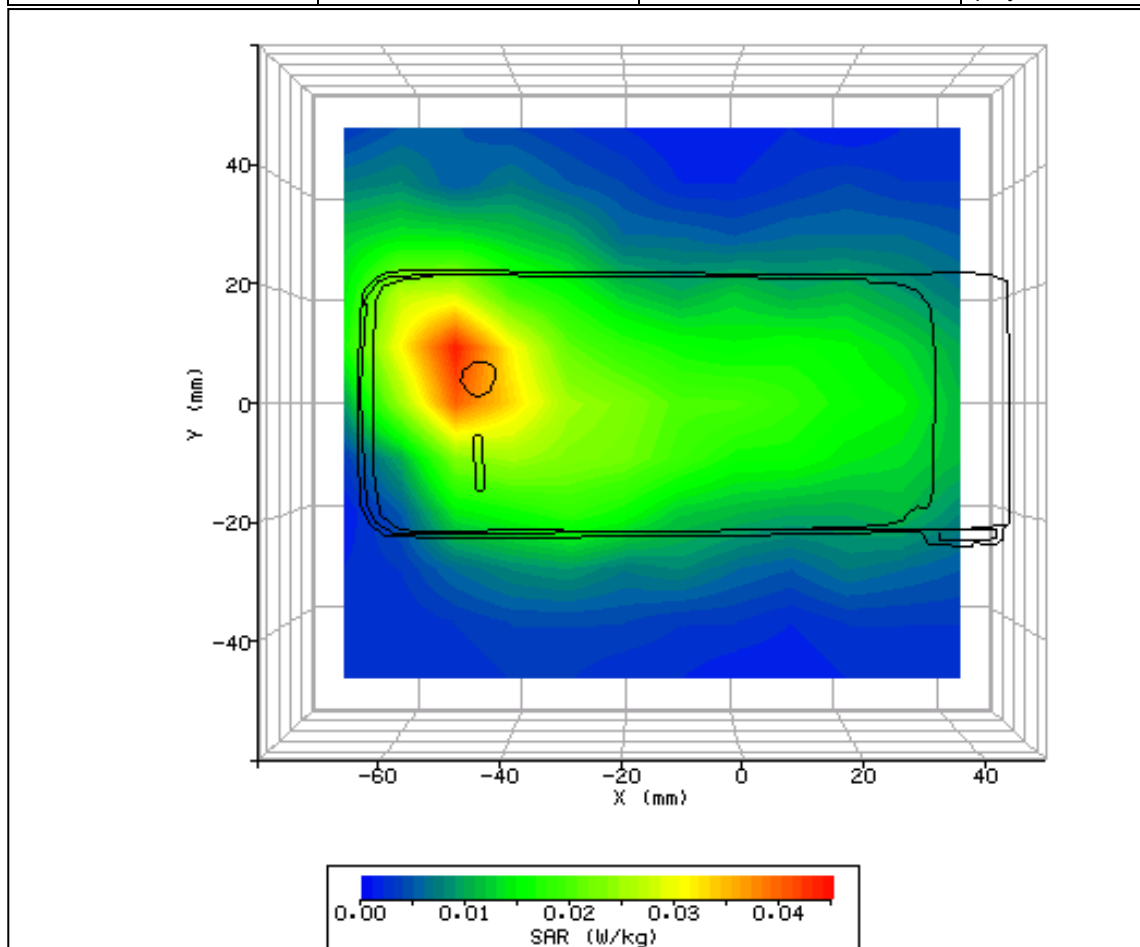


Figure 29: SAR Body Testing Results for the Philips Technologies CT9A9j Mobile Device in Front Facing Phantom Position; Tested at 1850.2MHz (PCS 1900 Low Channel) with 15mm Separation Distance to the Phantom.

SYSTEM / SOFTWARE:	SARA2 / 2.53 VPM	INPUT POWER DRIFT:	0.0 dB
DATE / TIME:	25/02/2008 14:01:13	DUT BATTERY MODEL/NO:	AB0950AWM
FILENAME:	75902829-251000-23.txt	PROBE SERIAL NUMBER:	0187
AMBIENT TEMPERATURE:	23.0°C	LIQUID SIMULANT:	1900 Body
DEVICE UNDER TEST:	Philips CT9A9j	RELATIVE PERMITTIVITY:	53.40
RELATIVE HUMIDITY:	33.1%	CONDUCTIVITY:	1.537
PHANTOM S/NO:	HeadBox1.csv	LIQUID TEMPERATURE:	23.2°C
PHANTOM ROTATION:	0°	MAX SAR X-AXIS LOCATION:	-43.00 mm
DUT POSITION:	Rear facing 15mm separation	MAX SAR Y-AXIS LOCATION:	4.00 mm
ANTENNA CONFIGURATION:	Fixed Internal	MAX E FIELD:	4.42 V/m
TEST FREQUENCY:	1909.8MHz	SAR 1g:	0.036 W/kg
AIR FACTORS:	346 / 439 / 415	SAR 10g:	0.022 W/kg
CONVERSION FACTORS:	0.440 / 0.440 / 0.440	SAR START:	0.005 W/kg
TYPE OF MODULATION:	GMSK (GPRS Mode)	SAR END:	0.005 W/kg
MODN. DUTY CYCLE:	25%	SAR DRIFT DURING SCAN:	0.87 %
DIODE COMPRESSION FACTORS (V*200):	20 / 20 / 20	PROBE BATTERY LAST CHANGED:	22/02/08
INPUT POWER LEVEL:	23.82 dBm	EXTRAPOLATION:	poly4

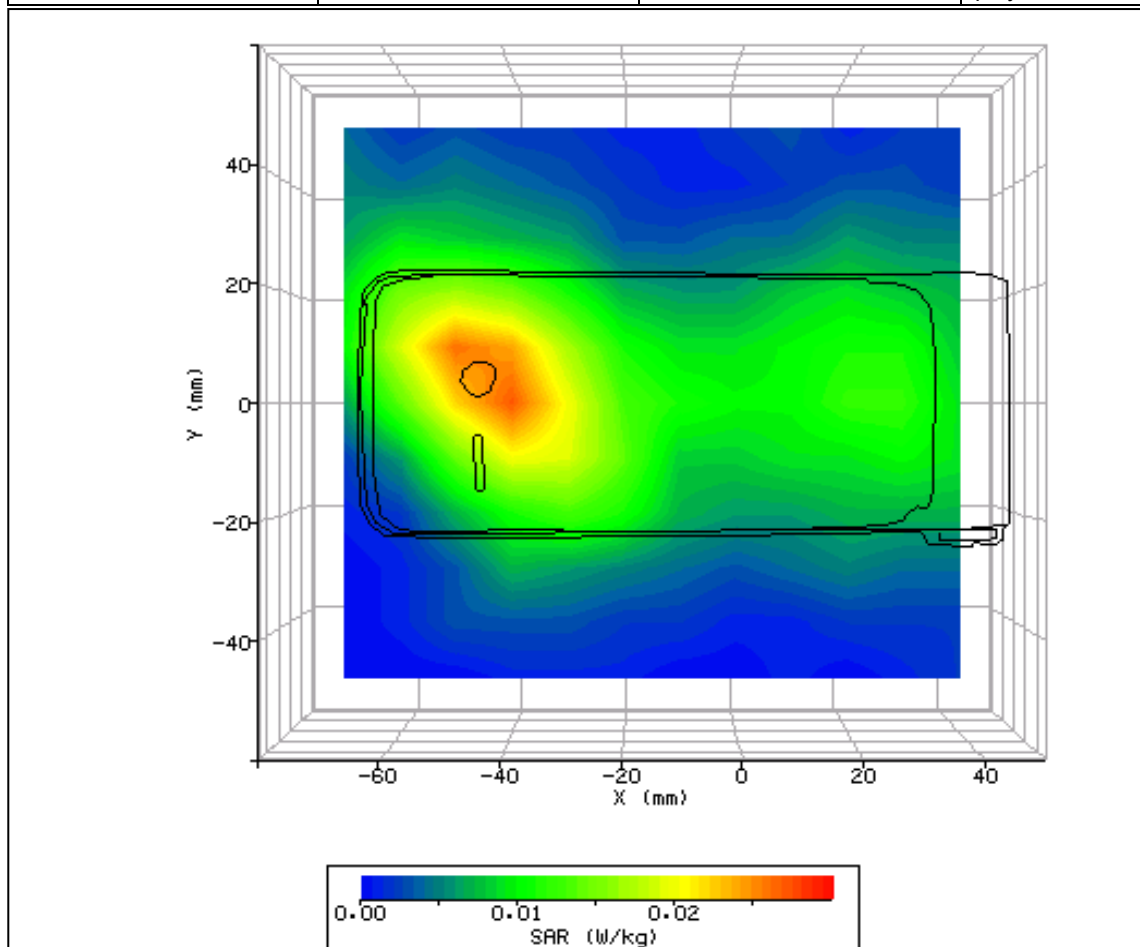


Figure 30: SAR Body Testing Results for the Philips Technologies CT9A9j Mobile Device in Front Facing Phantom Position; Alkaline battery in; Tested at 1909.8MHz (PCS 1900 High Channel) with 15mm Separation Distance to the Phantom.

SYSTEM / SOFTWARE:	SARA2 / 2.53 VPM	INPUT POWER DRIFT:	0.0 dB
DATE / TIME:	25/02/2008 14:31:55	DUT BATTERY MODEL/NO:	AB0950AWM
FILENAME:	75902829-251000-24.txt	PROBE SERIAL NUMBER:	0187
AMBIENT TEMPERATURE:	22.4°C	LIQUID SIMULANT:	1900 Body
DEVICE UNDER TEST:	Philips CT9A9j	RELATIVE PERMITTIVITY:	53.40
RELATIVE HUMIDITY:	27.2%	CONDUCTIVITY:	1.537
PHANTOM S/NO:	HeadBox81_0.csv	LIQUID TEMPERATURE:	23.2°C
PHANTOM ROTATION:	0°	MAX SAR X-AXIS LOCATION:	-40.00 mm
DUT POSITION:	Rear facing 15mm separation	MAX SAR Y-AXIS LOCATION:	4.00 mm
ANTENNA CONFIGURATION:	Fixed Internal	MAX E FIELD:	5.92 V/m
TEST FREQUENCY:	1850.2MHz	SAR 1g:	0.067 W/kg
AIR FACTORS:	346 / 439 / 415	SAR 10g:	0.043 W/kg
CONVERSION FACTORS:	0.440 / 0.440 / 0.440	SAR START:	0.011 W/kg
TYPE OF MODULATION:	GMSK (GPRS Mode)	SAR END:	0.010 W/kg
MODN. DUTY CYCLE:	25%	SAR DRIFT DURING SCAN:	-2.59 %
DIODE COMPRESSION FACTORS (V*200):	20 / 20 / 20	PROBE BATTERY LAST CHANGED:	22/02/08
INPUT POWER LEVEL:	25.63 dBm	EXTRAPOLATION:	poly4

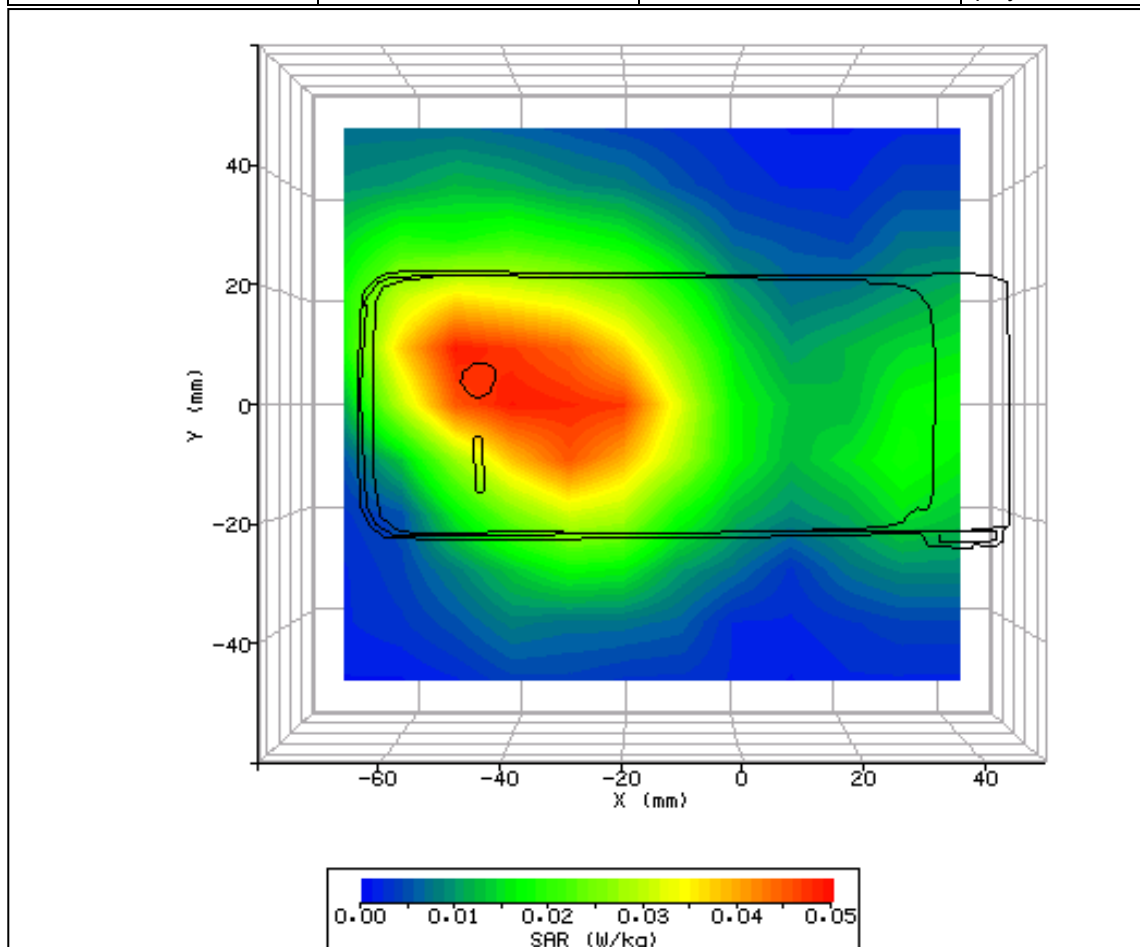


Figure 31: SAR Body Testing Results for the Philips Technologies CT9A9j Mobile Device in Front Facing Phantom Position; Alkaline battery out; Tested at 1850.2MHz (PCS 1800 Low Channel) with 15mm Separation Distance to the Phantom.

SYSTEM / SOFTWARE:	SARA2 / 2.53 VPM	INPUT POWER DRIFT:	0.0 dB
DATE / TIME:	20/03/2008 10:28:57	DUT BATTERY MODEL/NO:	AB0950AWM
FILENAME:	75902829-251000-25.txt	PROBE SERIAL NUMBER:	0171
AMBIENT TEMPERATURE:	23.0°C	LIQUID SIMULANT:	2450 Head
DEVICE UNDER TEST:	Philips CT9A9j	RELATIVE PERMITTIVITY:	38.43
RELATIVE HUMIDITY:	24.0%	CONDUCTIVITY:	1.84
PHANTOM S/NO:	Head_04_35.csv	LIQUID TEMPERATURE:	22.2°C
PHANTOM ROTATION:	180°	MAX SAR Y-AXIS LOCATION:	15.00 mm
DUT POSITION:	RH-Cheek	MAX SAR Z-AXIS LOCATION:	-119.50 mm
ANTENNA CONFIGURATION:	Fixed Internal	MAX E FIELD:	2.43 V/m
TEST FREQUENCY:	2441.0MHz	SAR 1g:	0.011 W/kg
AIR FACTORS:	346 / 439 / 415	SAR 10g:	0.008 W/kg
CONVERSION FACTORS:	0.432 / 0.432 / 0.432	SAR START:	0.002 W/kg
TYPE OF MODULATION:	GFSK	SAR END:	0.002 W/kg
PACKET TYPE	DH3	SAR DRIFT DURING SCAN:	0.00 %
DIODE COMPRESSION FACTORS (V*200):	20 / 20 / 20	PROBE BATTERY LAST CHANGED:	21/03/2008
INPUT POWER LEVEL:	1.34 mW	EXTRAPOLATION:	poly4

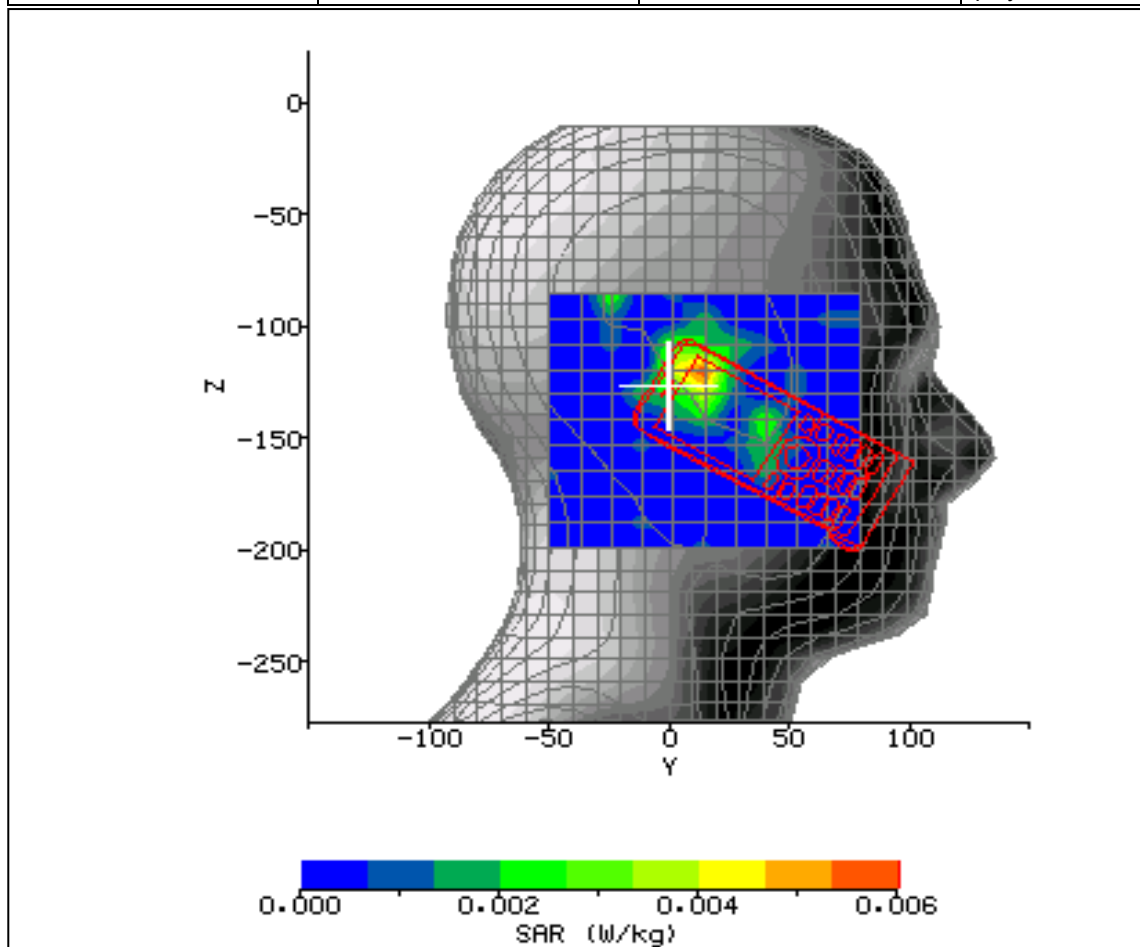


Figure 32: SAR Head Testing Results for the Philips Technologies CT9A9j Mobile Device in RH-Cheek Position; Alkaline battery out; Tested at 2441.0 MHz (Bluetooth Middle Channel).



Product Service

SECTION 3

TEST EQUIPMENT USED



Product Service

3.1 TEST EQUIPMENT USED

The following test equipment was used at TUV Product Service Ltd:

Instrument Description	Manufacturer	Model Type	TE Number	Calibration Due
10MHz - 2.5GHz, 3W, Amplifier	Vectawave Technology	VTL5400	51	30-Nov-2008
Power Meter	Rohde & Schwarz	NRV	52	17-May-2008
Signal Generator	Hewlett Packard	ESG4000A	61	12-Mar-2008
Signal Generator	Marconi	2031	53	23-Feb-2009
Thermometer	Digitron	T208	64	10-Oct-2008
Thermocouple (Type K)	TUV	TYPE K	65	10-Oct-2008
SAR Robot	Mitsubishi	RV-E2	156	TU
Attenuator (20dB, 10W)	Narda	766F-20	483	01-Jun-2008
SAM Head Phantom	Antennessa	Head FT04.csv	1559	TU
SAM Head Phantom	Antennessa	Head FT04_35.csv	1561	TU
Flat Phantom	IndexSar Ltd	Headbox 01	1563	TU
Upright Bench 1 Chamber 1	IndexSar Ltd	SARA2-B1	1568	TU
Side Bench 2 Chamber 2	IndexSar Ltd	IXM-030	1571	TU
Bi-directional Coupler	IndexSar Ltd	7401 (VDC0830-20)	2414	02-Feb-2009
Power Sensor	Rohde & Schwarz	NRV- Z5	2878	18-May-2008
Power Sensor	Rohde & Schwarz	NRV-Z1	2879	17-May-2008
Radio Communications Test Set	Rohde & Schwarz	CMU 200	39	26-Apr-2008
850MHz Head Tissue Simulant	TUV Product Service Ltd	Batch 11	N/A	28-Feb-2008
850MHz Body Tissue Simulant	TUV Product Service Ltd	Batch 8	N/A	28-Feb-2008
1900MHz Head Tissue Simulant	TUV Product Service Ltd	Batch 3	N/A	28-Feb-2008
1900MHz Body Tissue Simulant	TUV Product Service Ltd	Batch 2	N/A	28-Feb-2008
2450MHz Head Tissue	TUV Product Service Ltd	Batch 6	N/A	28 Mar-2008



Product Service

3.2 TEST SOFTWARE

The following software was used to control the TÜV Product Service SARA2 System.

Instrument	Version Number	Date
SARA2 system	v.2.5.3 VPM	28/11/2006
Mitsubishi robot controller firmware revision	RV-E2 Version C9a	-
IFA-10 Probe amplifier	Version 2	-



Product Service

3.3 DIELECTRIC PROPERTIES OF SIMULANT LIQUIDS

The fluid properties of the simulant fluids used during routine SAR evaluation meet the dielectric properties required by EN 62209-1:2006 & OET Bulletin 65 (Edition 97-01).

The fluids were calibrated in our Laboratory and re-checked prior to any measurements being made against reference fluids stated in IEEE 1528-2003 of 0.9% NaCl (Salt Solution) at 23°C and also for Dimethylsulphoxide (DMS) at 21°C.

The fluids were made at TÜV Product Service Ltd under controlled conditions from the following OET(65)c formulae and IEEE 1528-2003. The composition of ingredients may have been modified accordingly to achieve the desired target tissue parameters required for routine SAR evaluation:

OET 65(c) Recipes

Ingredients (% by weight)	Frequency (MHz)									
	450		835		915		1900		2450	
Tissue Type	Head	Body	Head	Body	Head	Body	Head	Body	Head	Body
Water	38.56	51.16	41.45	52.4	41.05	56.0	54.9	40.4	62.7	73.2
Salt (NaCl)	3.95	1.49	1.45	1.4	1.35	0.76	0.18	0.5	0.5	0.04
Sugar	56.32	46.78	56.0	45.0	56.5	41.76	0.0	58.0	0.0	0.0
HEC	0.98	0.52	1.0	1.0	1.0	1.21	0.0	1.0	0.0	0.0
Bactericide	0.19	0.05	0.1	0.1	0.1	0.27	0.0	0.1	0.0	0.0
Triton X-100	0.0	0.0	0.0	0.0	0.0	0.0	0.0	0.0	36.8	0.0
DGBE	0.0	0.0	0.0	0.0	0.0	0.0	44.92	0.0	0.0	26.7
Dielectric Constant	43.42	58.0	42.54	56.1	42.0	56.8	39.9	54.0	39.8	52.5
Conductivity (S/m)	0.85	0.83	0.91	0.95	1.0	1.07	1.42	1.45	1.88	1.78

IEEE 1528 Recipes

Frequency (MHz)	300	450		835	900			1450	1800					1900		1950	2000	2100			2450			3000
Recipe#	1	1	3	1	1	2	3	1	1	2	2	3	1	2	4	1	1	2	2	3	2			
Ingredients (% by weight)																								
1, 2-Propanediol						64.81																		
Bactericide	0.19	0.19	0.50	0.10	0.10		0.50														0.50			
Diacetin			48.90				49.20														49.45			
DGBE								45.41	47.00	13.84	44.92		44.94	13.84	45.00	50.00	50.00	7.99	7.99		7.99			
HEC	0.98	0.96		1.00	1.00																			
NaCl	5.95	3.95	1.70	1.45	1.48	0.79	1.10	0.67	0.36	0.35	0.18	0.64	0.18	0.35				0.16	0.16		0.16			
Sucrose	55.32	56.32		57.00	56.50																			
Triton X-100										30.45			30.45					19.97	19.97		19.97			
Water	37.56	38.56	48.90	40.45	40.92	34.40	49.20	53.80	52.64	55.36	54.90	49.43	54.90	55.36	55.00	50.00	50.00	71.88	71.88	49.75	71.88			
Measured dielectric parameters																								
ϵ_r	46.00	43.40	44.30	41.60	41.20	41.80	42.70	40.9	39.3	41.00	40.40	39.20	39.90	41.00	40.10	37.00	36.80	41.10	40.30	39.20	37.90			
σ (S/m)	0.86	0.85	0.90	0.90	0.98	0.97	0.99	1.21	1.39	1.38	1.40	1.40	1.42	1.38	1.41	1.40	1.51	1.55	1.88	1.82	2.46			
Temp (°C)	22	22	20	22	22	22	20	22	22	21	22	20	21	21	20	22	22	20	20	20	20			
Target dielectric parameters (Table 2)																								
ϵ_r	45.30	43.50		41.5	41.50	40.50	40.00										39.80			39.20		38.50		
σ (S/m)	0.87	0.87		0.9	0.97	1.20	1.40										1.49			1.80		2.40		
NOTE – Multiple columns for any single frequency are optional recipe #, reference: 1 (Kanda et al. [B185]), 2 (Vigneras [B143]), 3 (Peyman and Gabriel [B119]), 4 (Fukunaga et al [B50])																								

NOTE – Multiple columns for any single frequency are optional recipe #, reference: 1 (Kanda et al. [B185]), 2 (Vigneras [B143]), 3 (Peyman and Gabriel [B119]), 4 (Fukunaga et al [B50])



Product Service

The dielectric properties of the tissue simulant liquids used for the SAR testing at TÜV Product Service Ltd are as follows:-

Fluid Type and Frequency	Relative Permittivity ϵ_R (ϵ') Target	Relative Permittivity ϵ_R (ϵ') Measured	Conductivity σ Target	Conductivity σ Measured
Head 850MHz	41.5	40.24	0.900	0.886
Body 850MHz	55.0	57.98	1.050	0.989
Head 1900MHz	40.0	40.45	1.400	1.429
Body 1900MHz	53.3	53.40	1.520	1.537
Head 2450MHz	39.2	38.43	1.800	1.840

3.4 TEST CONDITIONS

3.4.1 Test Laboratory Conditions

Ambient Temperature: Within +15°C to +35°C at 20% RH to 75% RH.
The actual Temperature during the testing ranged from 22.6°C to 24.1°C.
The actual Humidity during the testing ranged from 20.2% to 33.9% RH.

3.4.2 Test Fluid Temperature Range

Frequency	850 MHz	850 MHz	1900 MHz	1900 MHz	2450 MHz
Body / Head Fluid	Head	Body	Head	Body	Head
Min Temperature	23.3°C	23.2°C	22.5°C	23.2°C	22.2°C
Max Temperature	23.5°C	23.2°C	22.7°C	23.2°C	22.2°C

3.4.3 SAR Drift

The SAR Drift was within acceptable limits during scans. The maximum SAR Drift, drift due to the handset electronics, was recorded as -4.41% (-0.200dB) for all of the testing.

3.5 MEASUREMENT UNCERTAINTY

Source of Uncertainty	Description	Tolerance / Uncertainty \pm %	Probability distribution	Div	c_i (1g)	c_i (10g)	Standard Uncertainty \pm % (1g)	v_i or v_{eff}
<i>Measurement System</i>								
Probe calibration	7.2.1	8.73	N	1	1	1	8.73	∞
Isotropy	7.2.1.2	3.18	R	1.73	1	1	1.84	∞
Probe angle >30deg	additional	12.00	R	1.73	1	1	6.93	∞
Boundary effect	7.2.1.5	0.49	R	1.73	1	1	0.28	∞
Linearity	7.2.1.3	1.00	R	1.73	1	1	0.58	∞
Detection limits	7.2.1.4	0.00	R	1.73	1	1	0.00	∞
Readout electronics	7.2.1.6	0.30	N	1	1	1	0.30	∞
Response time	7.2.1.7	0.00	R	1.73	1	1	0.00	∞
Integration time (equiv.)	7.2.1.8	1.38	R	1.73	1	1	0.80	∞
RF ambient conditions	7.2.3.6	3.00	R	1.73	1	1	1.73	∞
Probe positioner mech. restrictions	7.2.2.1	5.35	R	1.73	1	1	3.09	∞
Probe positioning with respect to phantom shell	7.2.2.3	5.00	R	1.73	1	1	2.89	∞
Post-processing	7.2.4	7.00	R	1.73	1	1	4.04	∞
<i>Test sample related</i>								
Test sample positioning	7.2.2.4	1.50	R	1.73	1	1	0.87	∞
Device holder uncertainty	7.2.2.4.2	1.73	R	1.73	1	1	1.00	∞
Drift of output power	7.2.3.4	5.00	R	1.73	1	1	2.89	∞
<i>Phantom and set-up</i>								
Phantom uncertainty (shape and thickness tolerances)	7.2.2.2	2.01	R	1.73	1	1	1.16	∞
Liquid conductivity (target)	7.2.3.3	5.00	R	1.73	0.64	0.43	1.85	∞
Liquid conductivity (meas.)	7.2.3.3	5.00	N	1	0.64	0.43	3.20	∞
Liquid permittivity (target)	7.2.3.4	5.00	R	1.73	0.6	0.49	1.73	∞
Liquid permittivity (meas.)	7.2.3.4	3.00	N	1	0.6	0.49	1.80	∞
Combined standard uncertainty			RSS				14.04	
Expanded uncertainty (95% confidence interval)			K=2				28.09	



Product Service

SECTION 4

PHOTOGRAPHS

4.1 TEST POSITIONAL PHOTOGRAPHS



Figure 33:
Positional Photograph of the CT9A9j
Handset in LH Cheek Position.



Figure 34:
Positional Photograph of the CT9A9j
Handset in LH 15° Position.

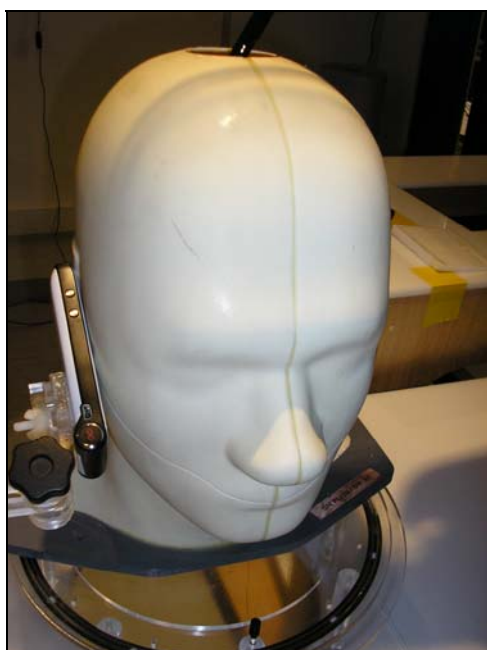


Figure 35:
Positional Photograph of the CT9A9j
Handset in RH Cheek Position.



Figure 36:
Positional Photograph of the CT9A9j
Handset in RH 15° Position.



Figure 37:
Positional Photograph of the CT9A9j
Handset in front facing Position.
15mm separation.



Figure 38:
Positional Photograph of the CT9A9j
Handset in rear facing Position
15mm separation.

4.2 PHOTOGRAPHS OF EQUIPMENT UNDER TEST (EUT)



Figure 39:
Front View.



Figure 40:
Rear View.



Figure 41:
Rear View – Main Battery Removed.



Figure 42:
Rear View – Alkaline Battery Removed.



Product Service

SECTION 5

ACCREDITATION, DISCLAIMERS AND COPYRIGHT



Product Service

5.1 ACCREDITATION, DISCLAIMERS AND COPYRIGHT

This report must not be reproduced, except in its entirety, without the written permission of
TÜV Product Service Limited

© 2008 TÜV Product Service Limited



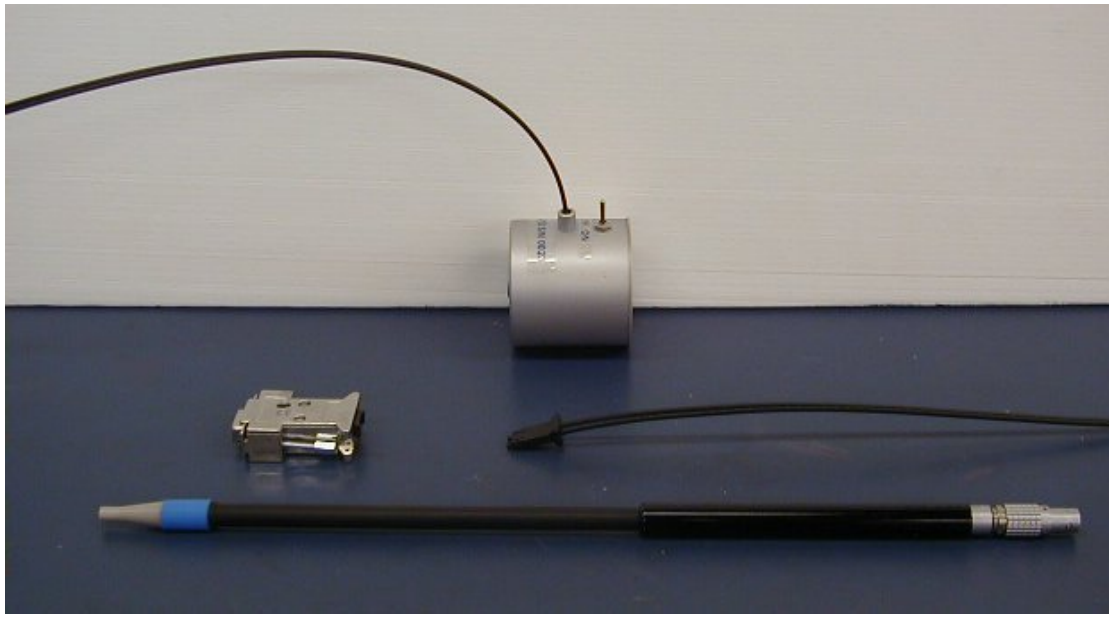
Product Service

ANNEX A

PROBE CALIBRATION INFORMATION



Product Service



Indexsar Limited
Oakfield House
Cudworth Lane
Newdigate
Surrey RH5 5BG
Tel: +44 (0) 1306 632 870
Fax: +44 (0) 1306 631 834
e-mail: enquiries@indexsar.com



Product Service



Indexsar Limited

Oakfield House

Cudworth Lane

Newdigate

Surrey RH5 5BG

Tel: +44 (0) 1306 632 870

Fax: +44 (0) 1306 631 834

e-mail: enquiries@indexsar.com

Calibration Certificate 0709/0187
Dosimetric E-field Probe

Type: IXP-050

Manufacturer: IndexSAR, UK

Serial Number: 0187

Place of Calibration: IndexSAR, UK

IndexSAR Limited hereby declares that the IXP-050 Probe named above has been calibrated for conformity to the IEEE 1528 and CENELEC EN 62209-1:2006 standards on the date shown below.

Date of Initial Calibration: 24th September 2007

The probe named above will require a calibration check on the date shown below.

Next Calibration Date: September 2008

The calibration was carried out using the methods described in the calibration document.

Where applicable, the standards used in the calibration process are traceable to the UK's National Physical Laboratory.

Calibrated By:

A. Brinklow

Approved By:

M. J. Nairn

Please keep this certificate with the calibration document. When the probe is sent for a calibration check, please include the calibration document.

INTRODUCTION

This Report presents measured calibration data for a particular Indexsar SAR probe (S/N 0187) and describes the procedures used for characterisation and calibration.

Indexsar probes are characterised using procedures that, where applicable, follow the recommendations of CENELEC [1] and IEEE [2] standards. The procedures incorporate techniques for probe linearisation, isotropy assessment and determination of liquid factors (conversion factors). Calibrations are determined by comparing probe readings with analytical computations in canonical test geometries (waveguides) using normalised power inputs.

Each step of the calibration procedure and the equipment used is described in the sections below.

CALIBRATION PROCEDURE

1. Objectives

The calibration process comprises four stages

- 1) Determination of the channel sensitivity factors which optimise the probe's overall rotational isotropy in 900MHz brain fluid
- 2) Determination of the channel sensitivity factors and angular offset of the X channel which together optimise the probe's spherical isotropy in 900MHz brain fluid
- 3) Numerical combination of the two sets of channel sensitivity factors to give both acceptable rotational isotropy and acceptable spherical isotropy values
- 4) At each frequency of interest, application of these channel sensitivity factors to model the exponential decay of SAR in a waveguide fluid cell, and hence derive the liquid conversion factors at that frequency

2. Probe output

The probe channel output signals are linearised in the manner set out in Refs [1] and [2]. The following equation is utilized for each channel:

$$U_{lin} = U_{o/p} + U_{o/p}^2 / DCP \quad (1)$$

where U_{lin} is the linearised signal, $U_{o/p}$ is the raw output signal in voltage units and DCP is the diode compression potential in similar voltage units.

DCP is determined from fitting equation (1) to measurements of U_{lin} versus source feed power over the full dynamic range of the probe. The DCP is a characteristic of the Schottky diodes used as the sensors. For the IXP-050 probes with CW signals the DCP values are typically 0.10V (or 20 in the voltage units used by Indexsar software, which are V*200).

In turn, measurements of E-field are determined using the following equation (where output voltages are also in units of V*200):

$$E_{liq}^2 (V/m) = U_{linx} * Air Factor_x * Liq Factor_x + U_{liny} * Air Factor_y * Liq Factor_y + U_{linz} * Air Factor_z * Liq Factor_z \quad (3)$$



Here, “Air Factor” represents each channel’s sensitivity, while “Liq Factor” represents the enhancement in signal level when the probe is immersed in tissue-simulant liquids at each frequency of interest.

3. Selecting channel sensitivity factors to optimise isotropic response

After manufacture, the first stage of the calibration process is to balance the three channels’ Air Factor values, thereby optimising the probe’s overall axial response (“rotational isotropy”).

To do this, a 900MHz waveguide containing head-fluid simulant is selected. Like all waveguides used during probe calibration, this particular waveguide contains two distinct sections: an air-filled launcher section, and a liquid cell section, separated by a dielectric matching window designed to minimise reflections at the air-liquid interface.

The waveguide stands in an upright position and the liquid cell section is filled with 900MHz brain fluid to within 10 mm of the open end. The depth of liquid ensures there is negligible radiation from the waveguide open top and that the probe calibration is not influenced by reflections from nearby objects.

During the measurement, a TE_{01} mode is launched into the waveguide by means of an N-type-to-waveguide adapter. The probe is then lowered vertically into the liquid until the tip is exactly 10mm above the centre of the dielectric window. This particular separation ensures that the probe is operating in a part of the waveguide where boundary corrections are not necessary.

Care must also be taken that the probe tip is centred while rotating.

The exact power applied to the input of the waveguide during this stage of the probe calibration is immaterial since only relative values are of interest while the probe rotates. However, the power must be sufficiently above the noise floor and free from drift.

The dedicated Indexsar calibration software rotates the probe in 10 degree steps about its axis, and at each position, an Indexsar ‘Fast’ amplifier samples the probe channels 500 times per second for 0.4 s. The raw $U_{o/p}$ data from each sample are packed into 10 bytes and transmitted back to the PC controller via an optical cable. U_{linx} , U_{liny} and U_{linz} are derived from the raw $U_{o/p}$ values and written to an Excel template.

Once data have been collected from a full probe rotation, the Air Factors are adjusted using a special Excel Solver routine to equalise the output from each channel and hence minimise the rotational isotropy. This automated approach to optimisation removes the effect of human bias.

Figure 5 represents the output from each diode sensor as a function of probe rotation angle.

4. Measurement of Spherical Isotropy

The setup for measuring the probe’s spherical isotropy is shown in Figure 2.

A box phantom containing 900MHz head fluid is irradiated by a vertically-polarised, tuned dipole, mounted to the side of the phantom on the robot’s seventh axis. During calibration, the spherical response is generated by rotating the probe about its axis in 20 degree steps and changing the dipole polarisation in 10 degree steps.

By using the VPM technique discussed below, an allowance can also be made for the effect of E-field gradient across the probe’s spatial extent. This permits values for the probe’s effective tip radius and X-channel angular offset to be modelled until the overall spherical isotropy figure is optimised.

The dipole is connected to a signal generator and amplifier via a directional coupler and power meter. As with the determination of rotational isotropy, the absolute power level is not important as long as it is stable.

The probe is positioned within the fluid so that its sensors are at the same vertical height as the centre of the source dipole. The line joining probe to dipole should be perpendicular to the phantom wall, while the horizontal separation between the two should be small enough for VPM corrections to be applicable, without encroaching near the boundary layer of the phantom wall. VPM corrections require a knowledge of the fluid skin depth. This is measured during the calibration by recording the E-field strength while systematically moving the probe away from the dipole in 2mm steps over a 20mm range.

The directionality of the orthogonally-arranged sensors can be checked by analysing the data using dedicated Indexsar software, which displays the data in 3D format, a representative image of which is shown in Figure 3. The left-hand side of this diagram shows the individual channel outputs after linearisation (see above). The program uses these data to balance the channel outputs and then applies an optimisation process, which makes fine adjustments to the channel factors for optimum isotropic response.

5. Determination of Conversion ("Liquid") Factors at each frequency of interest

A lookup table of conversion factors for a probe allows a SAR value to be derived at the measured frequencies, and for either brain or body fluid-simulant.

The method by which the conversion factors are assessed is based on the comparison between measured and analytical rates of decay of SAR with height above a dielectric window. This way, not only can the conversion factors for that frequency/fluid combination be determined, but an allowance can also be made for the scale and range of boundary layer effects.

The theoretical relationship between the SAR at the cross-sectional centre of the lossy waveguide as a function of the longitudinal distance (z) from the dielectric separator is given by Equation 4:

$$SAR(z) = \frac{4(P_f - P_b)}{\rho ab \delta} e^{-2z/\delta} \quad (4)$$

Here, the density ρ is conventionally assumed to be 1000 kg/m³, ab is the cross-sectional area of the waveguide, and P_f and P_b are the forward and reflected power inside the lossless section of the waveguide, respectively. The penetration depth δ (which is the reciprocal of the waveguide-mode attenuation coefficient) is a property of the lossy liquid and is given by Equation (5).

$$\delta = \left[\text{Re} \left\{ \sqrt{(\pi/a)^2 + j\omega\mu_o(\sigma + j\omega\epsilon_o\epsilon_r)} \right\} \right]^{-1} \quad (5)$$

where σ is the conductivity of the tissue-simulant liquid in S/m, ϵ_r is its relative permittivity, and ω is the radial frequency (rad/s). Values for σ and ϵ_r are obtained prior to each waveguide test using an Indexsar DiLine measurement kit, which uses the TEM method as recommended in [2]. σ and ϵ_r are both temperature- and fluid-dependent, so are best measured using a sample of the tissue-simulant fluid immediately prior to the actual calibration.

Wherever possible, all DiLine and calibration measurements should be made in the open laboratory at 22 ± 2.0°C; if this is not possible, the values of σ and ϵ_r should reflect the actual temperature. Values employed for calibration are listed in the tables below.



By ensuring the liquid height in the waveguide is at least three penetration depths, reflections at the upper surface of the liquid are negligible. The power absorbed in the liquid is therefore determined solely from the waveguide forward and reflected power.

Different waveguides are used for 835/900MHz, 1800/1900MHz, 2450MHz and 5200/5800MHz measurements. Table A.1 of [1] can be used for designing calibration waveguides with a return loss greater than 20 dB at the most important frequencies used for personal wireless communications, and better than 15dB for frequencies greater than 5GHz. Values for the penetration depth for these specific fixtures and tissue-simulating mixtures are also listed in Table A.1.

According to [1], this calibration technique provides excellent accuracy, with standard uncertainty of less than 3.6% depending on the frequency and medium. The calibration itself is reduced to power measurements traceable to a standard calibration procedure. The practical limitation to the frequency band of 800 to 5800 MHz because of the waveguide size is not severe in the context of compliance testing.

During calibration, the probe is lowered carefully until it is just touching the cross-sectional centre of the dielectric window. 200 samples are then taken and written to an Excel template file before moving the probe vertically upwards. This cycle is repeated 150 times. The vertical separation between readings is determined from practical considerations of the expected SAR decay rate, and range from 0.2mm steps at low frequency, through 0.1mm at 2450MHz, down to 0.05mm at 5GHz.

Once the data collection is complete, a Solver routine is run which optimises the measured-theoretical fit by varying the conversion factor, and the boundary correction size and range.

For 450 MHz calibrations, a slightly different technique must be used — the equatorial response of the probe-under-test is compared with the equivalent response of a probe whose 450MHz characteristics have already been determined by NPL. The conversion factor of the probe-under-test can then be deduced.

VPM (Virtual Probe Miniaturisation)

SAR probes with 3 diode-sensors in an orthogonal arrangement are designed to display an isotropic response when exposed to a uniform field. However, the probes are ordinarily used for measurements in non-uniform fields and isotropy is not assured when the field gradients are significant compared to the dimensions of the tip containing the three orthogonally-arranged dipole sensors.

It becomes increasingly important to assess the effects of field gradients on SAR probe readings when higher frequencies are being used. For Indexsar IXP-050 probes, which are of 5mm tip diameter, field gradient effects are minor at GSM frequencies, but are major above 5GHz. Smaller probes are less affected by field gradients and so probes, which are significantly less than 5mm diameter, would be better for applications above 5GHz.

The IndexSAR report IXS0223 describes theoretical and experimental studies to evaluate the issues associated with the use of probes at arbitrary angles to surfaces and field directions. Based upon these studies, the procedures and uncertainty analyses referred to in P1528 are addressed for the full range of probe presentation angles.

In addition, generalized procedures for correcting for the finite size of immersible SAR probes are developed. Use of these procedures enables application of schemes for virtual probe miniaturization (VPM) – allowing probes of a specific size to be used where physically-smaller probes would otherwise be required.

Given the typical dimensions of 3-channel SAR probes presently available, use of the VPM technique extends the satisfactory measurement range to higher frequencies.



Product Service

CALIBRATION FACTORS MEASURED FOR PROBE S/N 0187

The probe was calibrated at 450, 835, 900, 1800, 1900, 2100 and 2450 MHz in liquid samples representing brain and body liquid at these frequencies.

The calibration was for CW signals only, and the axis of the probe was parallel to the direction of propagation of the incident field i.e. end-on to the incident radiation. The axial isotropy of the probe was measured by rotating the probe about its axis in 10 degree steps through 360 degrees in this orientation.

The reference point for the calibration is in the centre of the probe's cross-section at a distance of 2.7 mm from the probe tip in the direction of the probe amplifier. A value of 2.7 mm should be used for the tip to sensor offset distance in the software. The distance of 2.7mm for assembled probes has been confirmed by taking X-ray images of the probe tips (see Figure 9).

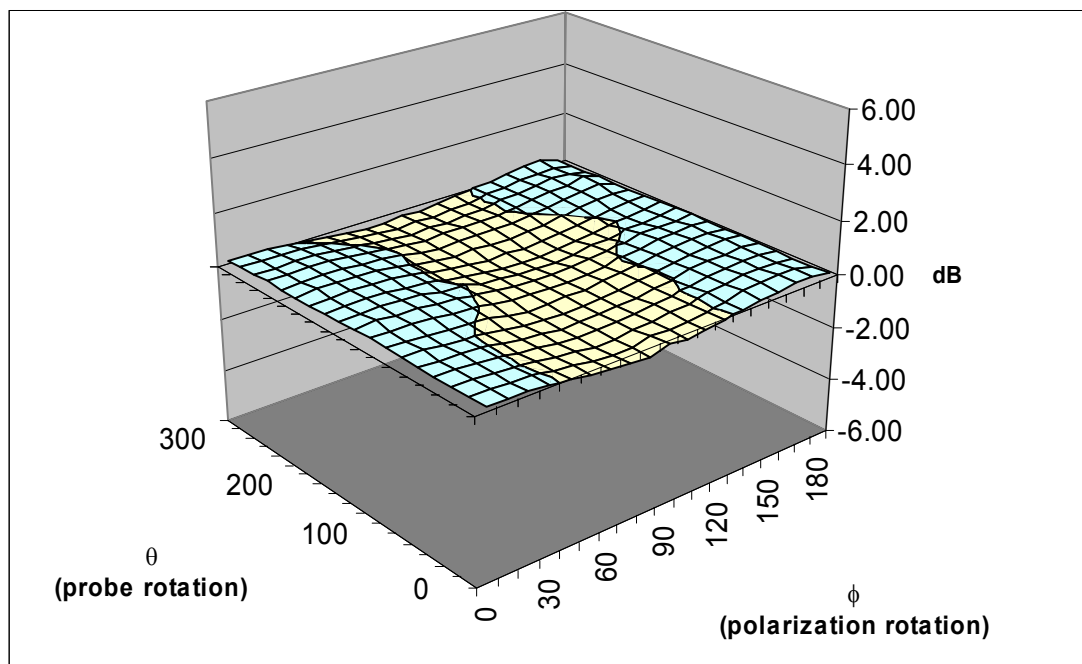
It is important that the diode compression point and air factors used in the software are the same as those quoted in the results tables, as these are used to convert the diode output voltages to a SAR value.

MEASUREMENT UNCERTAINTIES

A complete measurement uncertainty analysis for the SARA2 measurement system has been published in Reference [3]. Table 10 from that document is re-created below, and lists the uncertainty factors associated just with the calibration of probes.

Source of uncertainty	Uncertainty value \pm %	Probability distribution	Divisor	c_i	Standard uncertainty $u_i \pm$ %	v_i or v_{eff}
Incident or forward power	5.743	N	1.00	1	5.743	∞
Relected power	5.773	N	1.00	1	5.773	∞
Liquid conductivity	1.120	N	1.00	1	1.120	∞
Liquid permittivity	1.085	N	1.00	1	1.085	∞
Field homogeneity	0.002	R	1.73	1	0.001	∞
Probe positioning: +/- 0.05mm	0.55	R	1.73	1	0.318	
Influence on Probe pos: 11%/mm						
Field probe linearity	4.7	R	1.73	1	2.714	∞
Combined standard uncertainty		RSS			8.729	

At the 95% confidence level, therefore, the expanded uncertainty is 17.1%



Surface Isotropy diagram of IXP-050 Probe S/N 0187 at 900MHz after VPM (rotational isotropy axial ± 0.06 dB, spherical isotropy ± 0.38 dB)

Probe tip radius	1.25
X Ch. Angle to red dot	11

Frequency	Head		Body	
	Bdy. Corr. – f(0)	Bdy. Corr. – d(mm)	Bdy. Corr. – f(0)	Bdy. Corr. – d(mm)
450	-	-	-	-
835	0.81	1.5	1.12	1.3
900	0.91	1.4	1.09	1.3
1800	0.98	1.4	0.95	1.4
1900	0.95	1.4	0.86	1.6
2100	0.80	1.5	0.69	1.9
2450	0.83	1.6	0.73	1.8



Product Service

SUMMARY OF CALIBRATION FACTORS FOR PROBE IXP-050 S/N 0187

Spherical isotropy measured at 900MHz	0.38	(+/-) dB
---------------------------------------	------	----------

	X	Y	Z	
Air Factors	346	439	415	(V*200)
CW DCPs	20	20	20	(V*200)

Freq (MHz)	Axial Isotropy		SAR ConvF		Notes
	(+/- dB)		(liq/air)		
	Head	Body	Head	Body	
450	-	-	0.349	0.352	1,3
835	-	-	0.318	0.318	1,2
900	0.06	-	0.319	0.332	1,2
1800	-	-	0.371	0.422	1,2
1900	-	-	0.376	0.440	1,2
2100	-	-	0.405	0.463	1,2
2450	-	-	0.432	0.501	1,2

Notes	
1)	Calibrations done at 22°C +/-2°C
2)	Waveguide calibration
3)	Transfer calibration



Product Service

PROBE SPECIFICATIONS

Indexsar probe 0187, along with its calibration, is compared with CENELEC and IEEE standards recommendations (Refs [1] and [2]) in the Tables below. A listing of relevant specifications is contained in the tables below:

1.1.1 Dimensions	S/N 0187	CENELEC [1]	IEEE [2]
Overall length (mm)	350		
Tip length (mm)	10		
Body diameter (mm)	12		
Tip diameter (mm)	5.2	8	8
Distance from probe tip to dipole centers (mm)	2.7		

1.1.2 Dynamic range	S/N 0187	CENELEC [1]	IEEE [2]
Minimum (W/kg)	0.01	<0.02	0.01
Maximum (W/kg) N.B. only measured to > 100 W/kg on representative probes	>100	>100	100

1.1.3 Isotropy (measured at 900MHz)	S/N 0187	CENELEC [1]	IEEE [2]
Axial rotation with probe normal to source (+/- dB)	0.06 (See table above)	0.5	0.25
Spherical isotropy covering all orientations to source (+/- dB)	0.38	1.0	0.50

1.1.4 Construction	Each probe contains three orthogonal dipole sensors arranged on a triangular prism core, protected against static charges by built-in shielding, and covered at the tip by PEEK cylindrical enclosure material. No adhesives are used in the immersed section. Outer case materials are PEEK and heat-shrink sleeving.
1.1.5 Chemical resistance	Tested to be resistant to glycol and alcohol containing simulant liquids but probes should be removed, cleaned and dried when not in use.



Product Service

REFERENCES

- [1] CENELEC, EN 50361, July 2001. Basic Standard for the measurement of specific absorption rate related to human exposure to electromagnetic fields from mobile phones.
- [2] IEEE 1528, Recommended practice for determining the spatial-peak specific absorption rate (SAR) in the human body due to wireless communications devices: Experimental techniques.
- [3] Indexsar Report IXS-0300, October 2007. Measurement uncertainties for the SARA2 system assessed against the recommendations of BS EN 50361: 2001

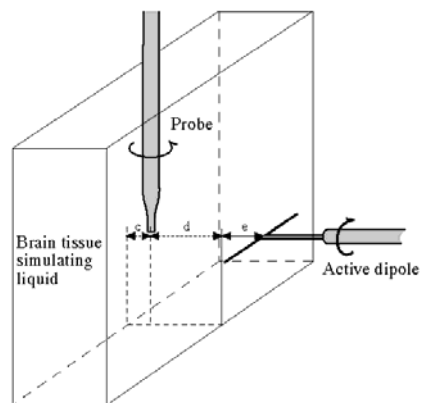
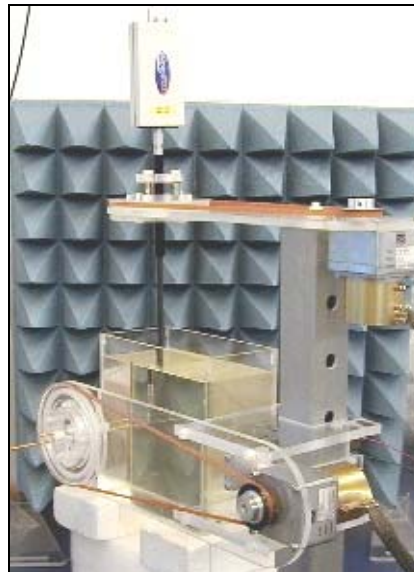


Figure 1. Spherical isotropy jig showing probe, dipole and box filled with simulated brain liquid (see Ref [2], Section A.5.2.1)

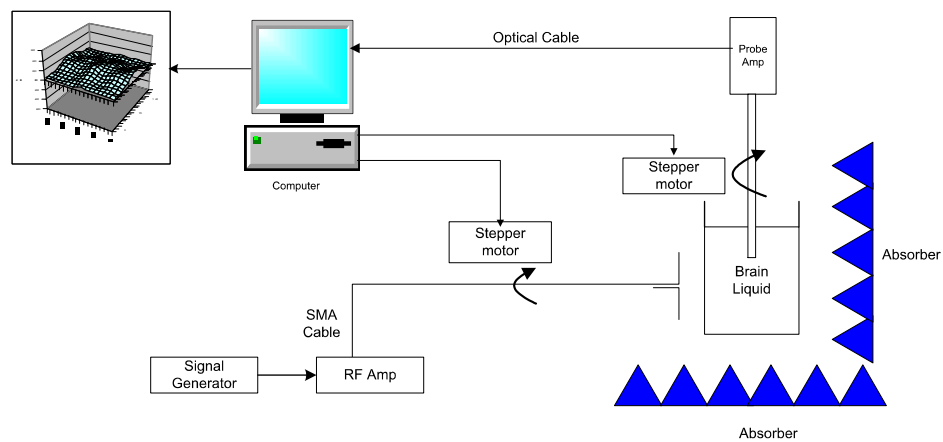


Figure 2. Schematic diagram of the test geometry used for isotropy determination

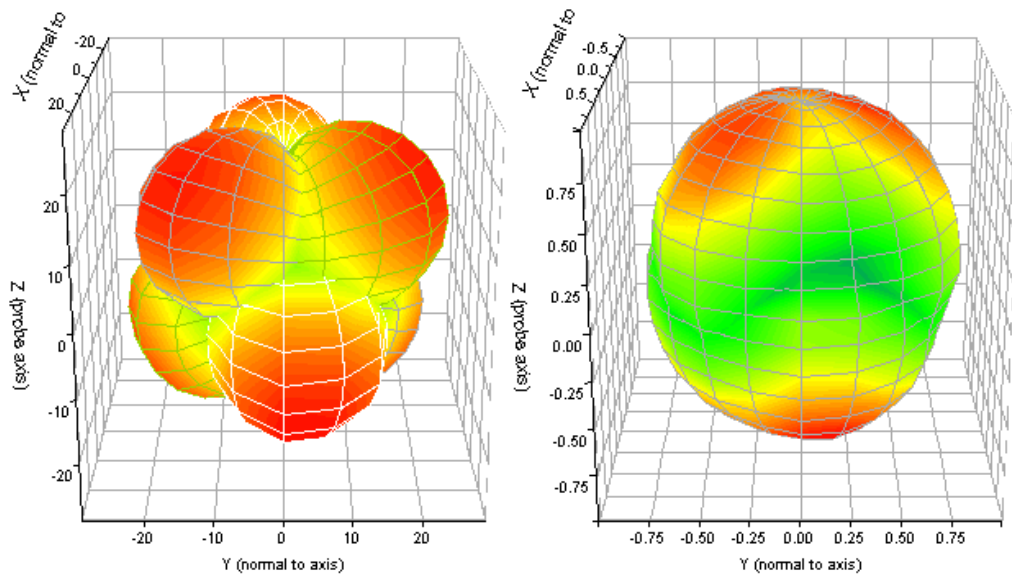


Figure 3. Graphical representation of a probe's response to fields applied from each direction. The diagram on the left shows the individual response characteristics of each of the three channels and the diagram on the right shows the resulting probe sensitivity in each direction. The colour range in the figure images the lowest values as blue and the maximum values as red. For probe S/N 0187, this range is (+/-) 0.38dB.

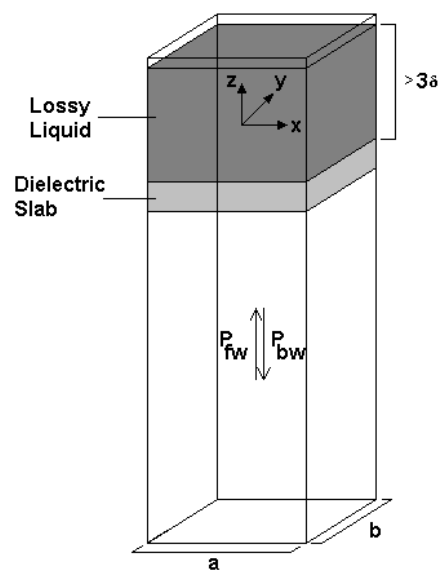


Figure 4. Geometry used for waveguide calibration (after Ref [2]. Section A.3.2.2)

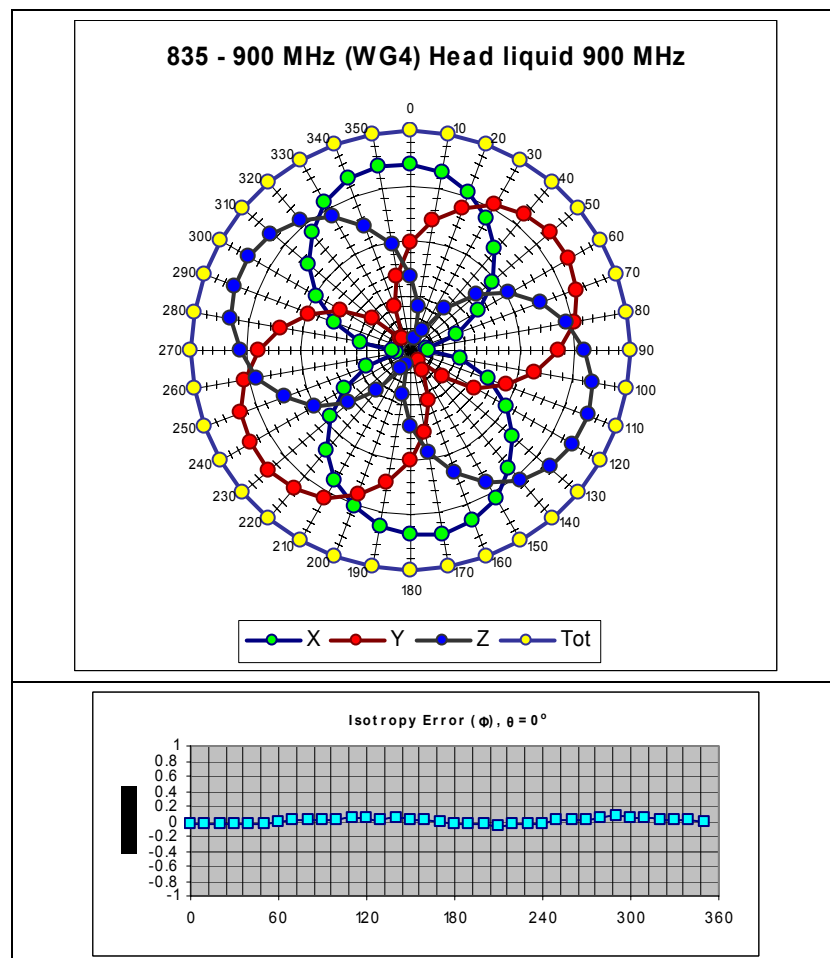


Figure 5. The rotational isotropy of probe S/N 0187 obtained by rotating the probe in a liquid-filled waveguide at 900 MHz.

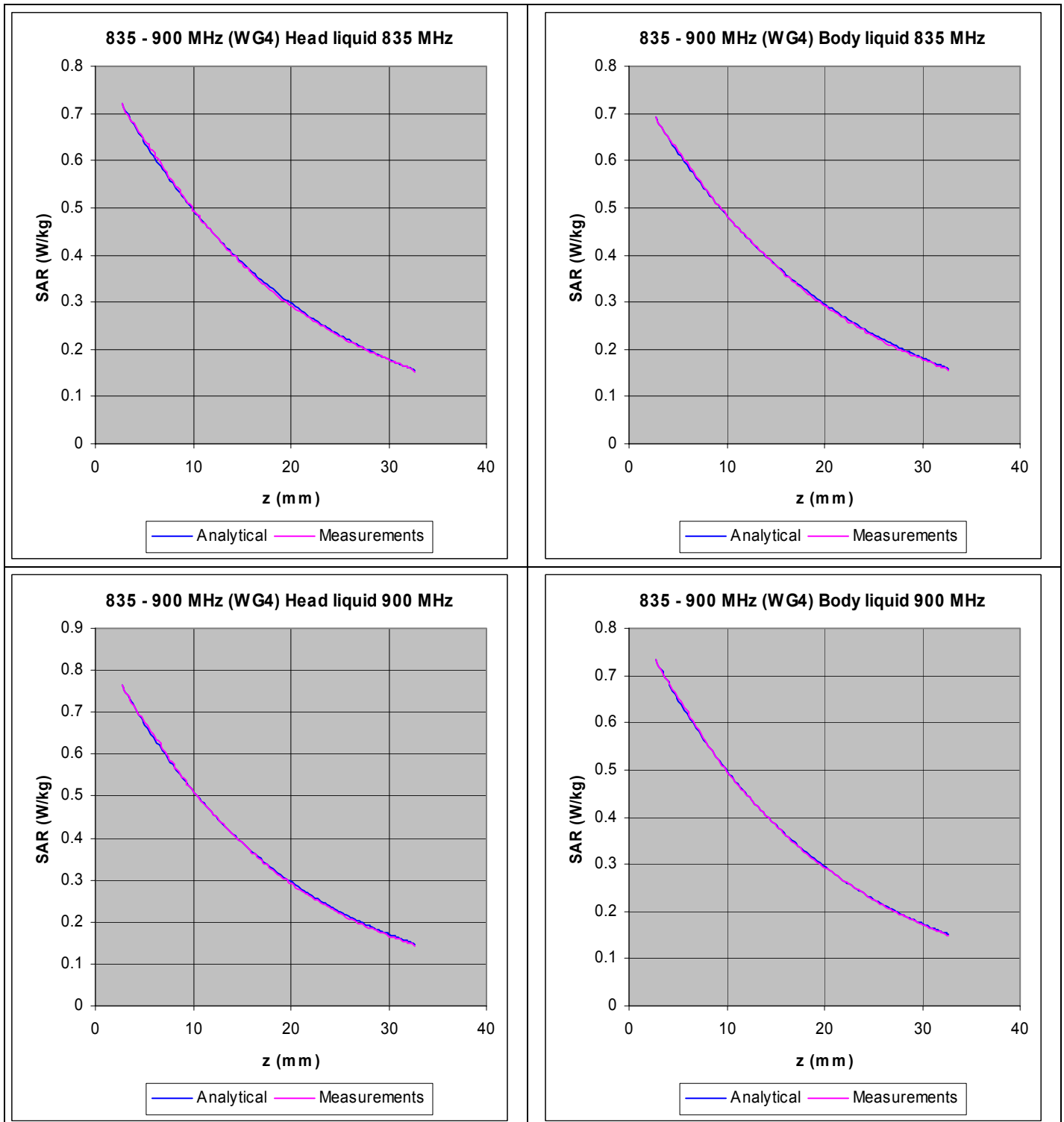
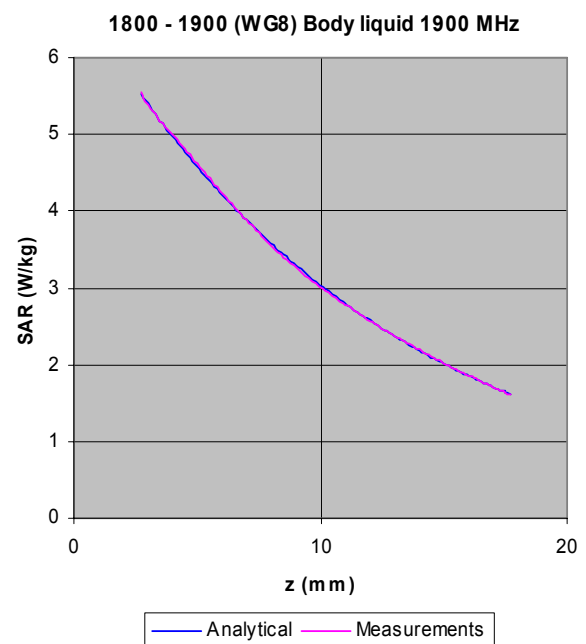
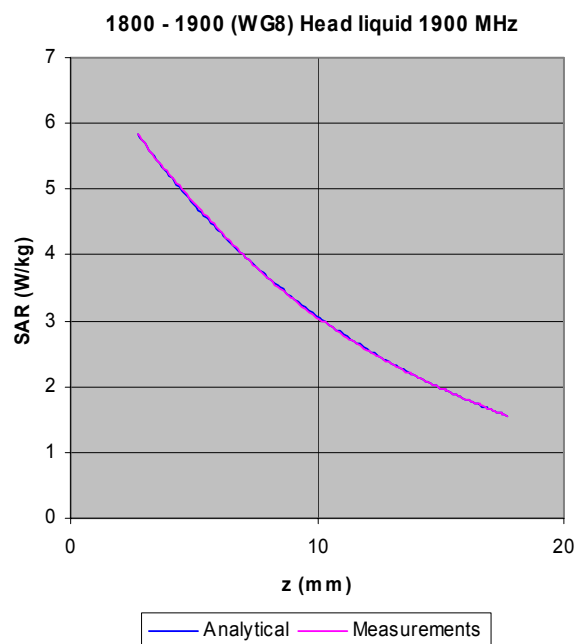
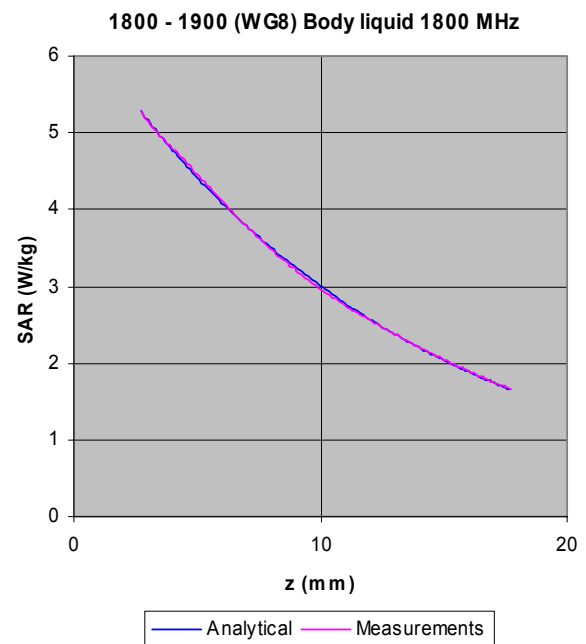
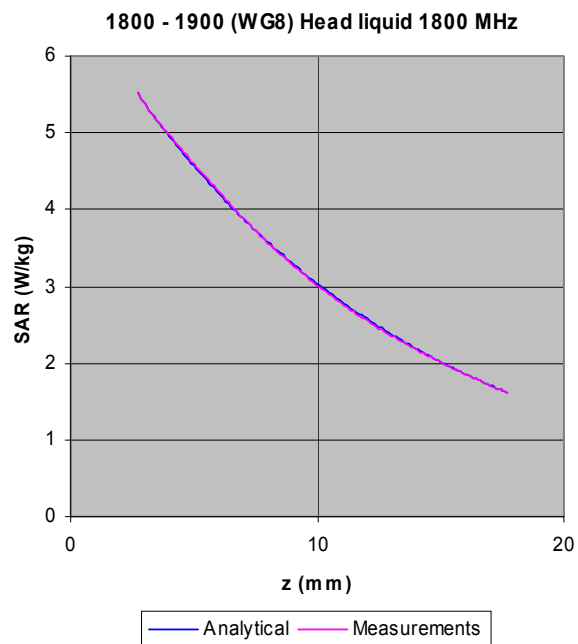


Figure 6. The measured SAR decay function along the centreline of the WG4 waveguide with conversion factors adjusted to fit to the theoretical function for the particular dimension, frequency, power and liquid properties employed.



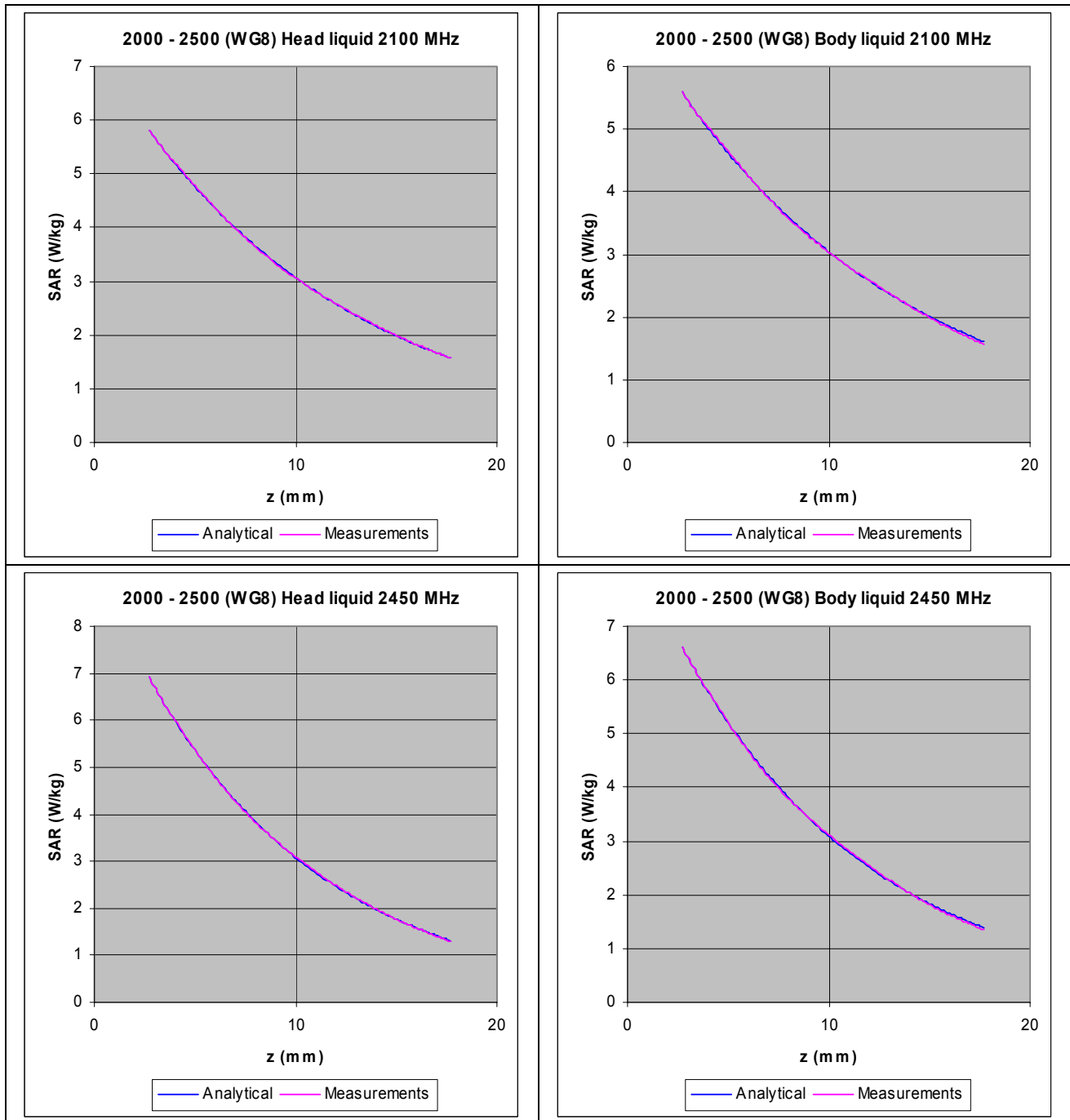


Figure 7. The measured SAR decay function along the centreline of the R22 waveguide with conversion factors adjusted to fit to the theoretical function for the particular dimension, frequency, power and liquid properties employed.

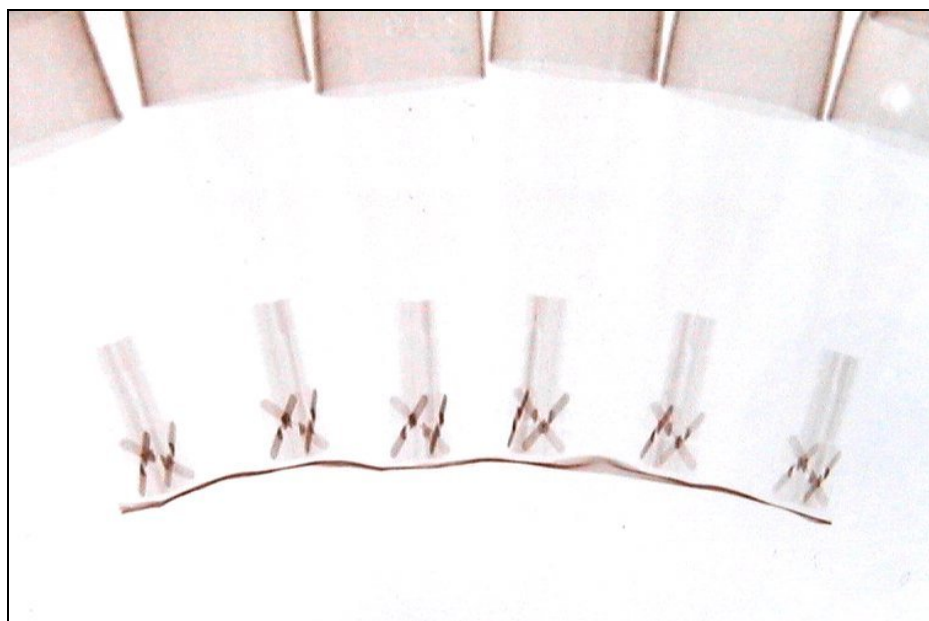


Figure 9: X-ray positive image of 5mm probes

Table indicating the dielectric parameters of the liquids used for calibrations at each frequency

<i>Liquid used</i>	<i>Relative permittivity (measured)</i>	<i>Conductivity (S/m) (measured)</i>
450 MHz BRAIN	44.56	0.84
450 MHz BODY	56.45	0.75
835 MHz BRAIN	42.38	0.91
835 MHz BODY	55.54	0.99
900 MHz BRAIN	41.61	0.97
900 MHz BODY	54.92	1.06
1800 MHz BRAIN	38.69	1.38
1800 MHz BODY	54.53	1.54
1900 MHz BRAIN	38.26	1.48
1900 MHz BODY	54.26	1.63
2100 MHz BRAIN	40.18	1.50
2100 MHz BODY	51.27	1.60
2450 MHz BRAIN	38.78	1.87
2450 MHz BODY	50.30	1.99