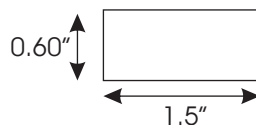


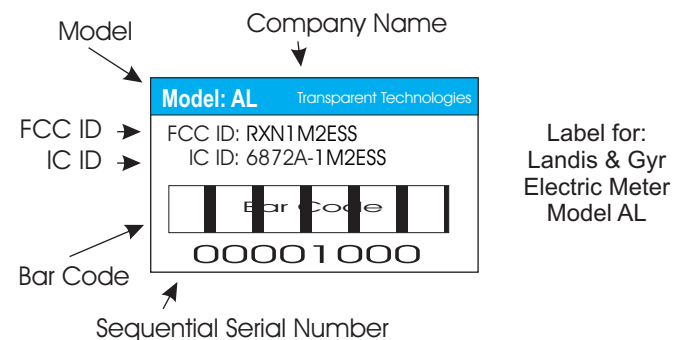
THIS DEVICE COMPLIES WITH PART 15 OF THE FCC RULES AND RSS-210 OF INDUSTRY CANADA. OPERATION IS SUBJECT TO THE FOLLOWING TWO CONDITIONS: (1) THIS DEVICE MAY NOT CAUSE HARMFUL INTERFERENCE, AND (2) THIS DEVICE MUST ACCEPT ANY INTERFERENCE RECEIVED, INCLUDING INTERFERENCE THAT MAY CAUSE UNDESIRABLE OPERATION.



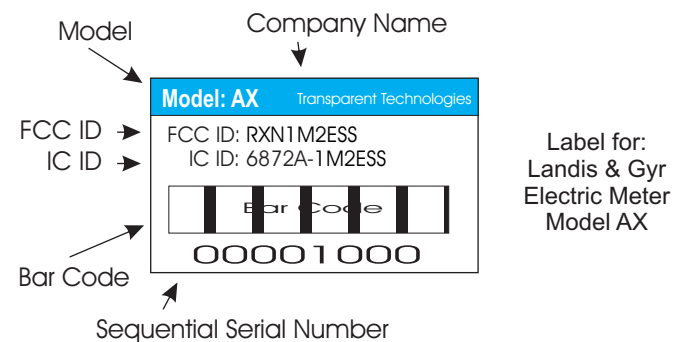
Model Label



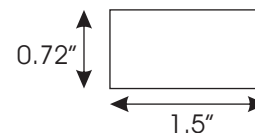
FCC/IC Inscription



**Label for:
Landis & Gyr
Electric Meter
Model AL**



**Label for:
Landis & Gyr
Electric Meter
Model AX**



Model Label

- The Landis & Gyr electric meter in which the M2e is embedded will have three (3) different labels:
- Model label is applied to front face of electric meter below LCD.
 - FCC/IC inscription label is applied to side of electric meter housing.
 - Model label is applied to side of electric meter housing.

	TITLE		
	M2e - AL and AX Labels		
	DWG #:	TBD	REV 1.2.0
	SIZE B	Date 11/08/12	SHEET OF