

Welcome to use MX20 USB Modem.

Your user guide is designed to:

First, explain simply how to use your phone, so finding the best way to enjoy your life.

Then, ensure that you can get the best services offered.

The product you hold can be recycled, so please contact your local dealer for the information on how to dispose of your used appliance.

Function Introduce

- Support EDGE / GPRS / GSM
- Phonebook Management^{P17}
- Support Windows 2000 & XP
- Driver Auto Installation^{P3}
- Connect to Internet^{P8}
- Send and receive SMS^{P11}

Content

Safety Precautions	III
1.Get to Know Your USB Modem	1
Your USB Modem	1
Indicator.....	1
Icon introduction	2
2.Installation Guide	3
System requirements	3
Device Driver and Dashboard Management Program Installation	3
Install SIM card	4
Uninstall the Dashboard Management Program	5
3.Dashboard Management Interface	6
Enter Dashboard Management Program	6
Interface introduction	6
4.Internet Connection	8
Network connection setting.....	9
Create a new configuration	9
Modify a configuration	9
Delete a configuration	9
Internet Connection & Disconnection.....	10
Connect to the Internet	10
Disconnect from the Internet.....	10
View Internet history	10
5.SMS	11
New SMS.....	11
Inbox.....	12
View a SMS	12
Reply a SMS	13
Delete a SMS.....	13
Clear Inbox	13
Forward a SMS	13
SMS storage management	13
Extract number	15
Export a SMS.....	15
Outbox.....	16
Draft.....	16
6.Contacts	17
The management of contacts	17
New contact	17

Modify a contact.....	17
Delete a contact.....	17
Application of contact entries.....	18
Send SMS.....	18
Search for a contact entry.....	18
The storage management of contact.....	19
Import contact.....	19
Export contact.....	19
Storage management of contact.....	19
7.Options Settings	21
General setting	21
Security setting	21
Power setting	22
Messaging settings.....	22
Network setting.....	23
Auto Select	23
Manual Select.....	23
8.Troubleshooting	24
Can't access to Internet	24
PIN/ PUK code lock	24
USIM card state is incorrect.....	25
9.USB Modem Maintenance	26
10.Safety Information.....	27
Using environment.....	27
Medical devices	27
The notice of using spare parts.....	28
Other safety information	28

Safety Precautions

Please read these simple guidelines. Breaking the rules may be dangerous or illegal. Further detailed information will be given in this manual.



You must not use the USB Modem while driving.



The USB Modem may disturb the communication network of aeroplanes, so please switch off the device on board.



All USB Modem may be disturbed, so as to influence its capability.



Switch off your device in areas where the use of the device is prohibited. Follow the instructions given by the respective medical faculty regarding the use of the device on their premises.



In order to ensure the best performance and to avoid damage to the USB Modem, please only use the original accessories.



Please turn off the USB Modem in gas station or the places near fuel, chemical solvent or other dangerous items, to avoid explosion.



Please turn off the USB Modem in explosion spots or in places where "Switch off bidirectional radio" icon are displayed. Pay attention and obey any relative regulations and rules.



Please neither burn USB Modem nor use USB Modem as ordinary rubbish. Please obey the environmental policy of the local government, to dispose and recycle them in time.



You must not disassemble USB Modem or its accessories by yourself. Please contact the appointed maintenance personnel to repair.



Please put the USB Modem and the accessories out of reach of the children and don't let them use USB Modem without adults around.



Please back up the important information stored in USB Modem to avoid losing important information.



Please switch off the USB Modem when near the high-precision electronic devices; otherwise, it may cause electronic device problems.

Cautions:

Any unapproved changes or modifications by the party responsible for compliance might infringe the user's authority to operate this mobile phone.

This mobile phone may generate radio frequency energy, which, if not installed and used in accordance with the instructions, may cause harmful interference to radio communications. However, there is no guarantee that interference will not occur in a particular installation. If this mobile phone does cause harmful interference to radio or television reception, which can be determined by turning the equipment off and on, the user is encouraged to try one or more of measures listed below to clear the interference:

--Reorient or relocate the receiving antenna.

--Increase the separation between the equipment and receiver.

--Connect the equipment into an outlet on a circuit different from that to which the receiver is connected.

--Consult the dealer or an experienced radio/TV technician for help.

Attention: 1. Please send used li-ion batteries to appropriate

disposal locations or return them to our company. Do not dispose of the batteries in the dustbin.

2. For body worn operation this phone has been tested and meets FCC RF exposure guidelines when used with an accessory that contains no metal and that positions the handset a minimum of 1.5 cm from the body. Use of other accessories may not ensure compliance with FCC RF exposure guidelines

Statement: This device complies with Part 15 of the FCC Rules. Operation is subject to the following two conditions: (1) this device may not cause harmful interference, and (2) this device must accept any interference received, including interference that may cause undesired operation.

Changes or modifications not expressly approved by the party responsible for compliance could void the user's authority to operate the equipment.

1. Get to Know Your USB Modem

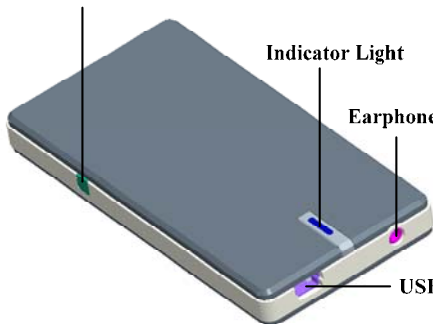
Your USB Modem

External Antenna Connector

Indicator Light

Earphone Slot

USB



Statement:the earphone slot is not used for telephone call now.It is only for preparatory funtion in the future.

Indicator







There are four colors of the Indicator Light: Red, Yellow, Blue and Green. The different color shows the different network service / status of USB Modem.

Status of indicator light	Indication
Blue(Flash)	At 3G network currently
Green(Flash)	At 2G network currently

Red	No network service or power off
Yellow	Activating the network service or system powering on



Icon introduction

Icon	Description
	Shows the strength of the network signal, the more the number of bars, the better the signal strength.
	Unread message
	Message memory full. Please delete undesired message and you can then continue to receive and send message normally.
	Shows the network type is GSM or UTMS.
	Shows the current data service type is EDGE /GPRS / HSDPA
	Appears when roaming.

2. Installation Guide



System requirements

The USB Modem can be used on the PC with the following Windows operation systems:

- Windows 2000
- Windows XP

If you want to use the USB Modem, your PC configuration should meet the following basic requirements:

- USB 1.1 interface or above
- Pentium 100 or above
- 32MB RAM or above
- 800X600 pixels display resolution or above



Device Driver and Dashboard Management Program Installation

The USB Modem is built in with installation software.

When you connect the USB Modem to your PC or Laptop for the first time, the software will automatically begin the installation of the required drivers for the USB Modem.

Please note that the process will take several minutes depending on the type of PC or Laptop you have. Please wait for the installation to complete before removing the USB Modem or restarting your PC or Laptop.



Caution:

When installation of the Dashboard Management Program is

completed, a shortcut ICON will appear on your desktop. But at this stage the installation still has not been finished. Please wait for a few moments to find the new hardware (Icon will appear in windows tray). Once new hardware is found and the USB Modem is ready to be used.

If the installation does not start automatically, please use the CD provided to install the necessary software.

After installing successfully, the desktop will show the shortcuts icon of USB Modem management program.



Caution:

If your PC operates in Windows 2000 operation system, after installing successfully, you need to restart your PC, and then you can use USB Modem management program.



Install SIM card

- (1) Open USIM card slot, as shown in the below chart:



- (2) Insert USIM card as shown:(pay attention to the direction)



(3) Close USIM card cover.

Uninstall the Dashboard Management Program

You can refer to the following instructions to uninstall the Dashboard management program:

- Open [**Control Panel** → **Add or Remove Programs**], and select [**Telit MX20 USB Modem**] finish the uninstallation as per system prompts.
- Click [**Start** → **Program** → **Telit MX20 USB Modem** → **Uninstall Telit MX20 USB Modem**], to run uninstallation program automatically.

3. Dashboard Management Interface

Enter Dashboard Management Program

Select [**Start** → **Program** → **Telit MX20 USB Modem** → **Telit MX20 USB Modem**], or select the shortcut from on your desktop and double click. This opens the USB Modem Dashboard Management Program.

If your SIM has a PIN (Personal Identification Number) code set, you should input the correct PIN code.

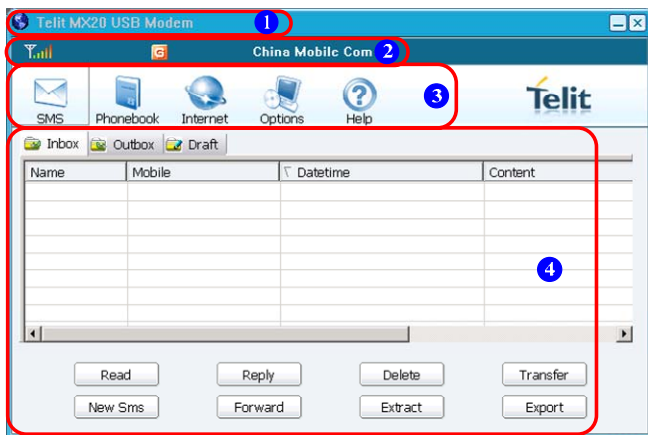


Notice

If you input your PIN Code incorrectly for three times in succession the SIM card will be locked. Please use your PUK code (PIN Unblocking Key) to unlock your SIM if this occurs. Your PUK code can be obtained from your Service Provider.

Interface introduction


Open USB Modem Dashboard Management Program, you can see the display as follows:

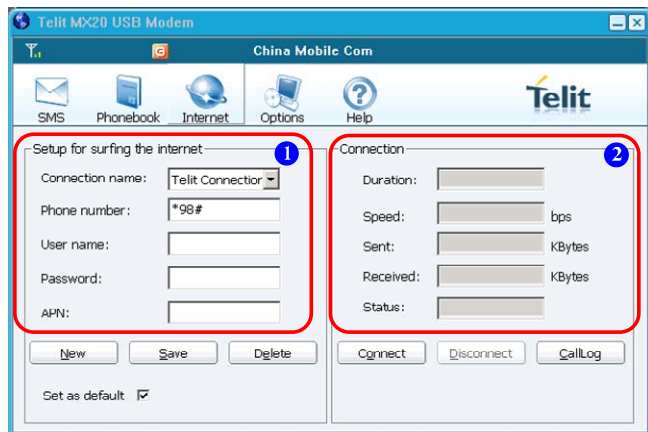


Area Code	Corresponding Introduction
1	Title bar: Shows the current window title.
2	Status bar: Shows the signal and all kinds of icons.
3	Function buttons: Used for choosing the function type of the current operation.
4	Function screen: It changes with the selected function.

4. Internet Connection

The USB Modem model MX20 allows connection to the Internet via several air interfaces including HSDPA , UMTS , EDGE and GPRS. You can establish your desired connection manner according to the network service available. The default connection manner is HSDPA Internet If network supports, you can send messages while surfing the Internet.

Click function button  and enter the Internet function screen. Please see the below chart:



Telit MX20 USB Modem

China Mobile Com

SMS Phonebook Internet Options Help

Setup for surfing the internet ①

Connection name: Telit Connector

Phone number: *98#

User name:

Password:

APN:

New Save Delete

Set as default ☒

Connection ②

Duration:

Speed: bps

Sent: KBytes

Received: KBytes

Status:

Connect Disconnect CallLog

Area number	Introduction
1	Parameters area: Input Internet connection parameters in this area.
2	Status area: Displays the connection status.



Network connection setting

Create a new configuration

- (1) Click **<New>** and enter **[New Connection]** screen.
- (2) Enter the relative parameters of Network connection.
- (3) Click **<OK>** to finish creating a new configuration.



Notice

Select [Set Default] and set the current network connection configuration as the default one.

Modify a configuration

- (1) Click **"Connection name"** listed on the Internet function screen, and select the item needed to be modified.
- (2) Modify the relative parameters.
- (3) Click **<Save>** to save the modified configuration.

Delete a configuration

- (1) Click **"Connection name"** listed on the Internet function screen, and select a setting you want to delete.
- (2) Click **<Delete>** to delete the configuration.

Internet Connection & Disconnection

Connect to the Internet

- (1) Click "**Connection name**" listed on the Internet function screen, and select a setting needed connection.
- (2) Click **<Connect>** and dial-up to connect to the Internet.

Disconnect from the Internet

If you want to disconnect from the Internet, click **<Disconnect>**.

View Internet history

Click **<CallLog>**, and enter **[Call Log]** interface on the Internet function screen, thus you can view the specific records of the previous connection

- Click **<Export>** to download records.
- After selecting your desired connection record, click **<Delete>** to delete it.
- Click **<Exit>** to exit **[Call Log]** screen.

5. SMS

Click the function button  to enter the SMS interface.



New SMS

- (1) Click **<New SMS>** and enter **[Write SMS]** interface.
- (2) Input a phone number.

You can input the phone number by the following methods:

- **Input number directly:** The USB Modem supports the function of sending SMS to several (up to 10) people at once, you can input 10 numbers at most, but you should separate them by inserting “;” between each number in the same way as for normal email.
- **Insert from phone book:** Click **<Phone>** and enter **[Select Contact]** screen, then you can select your desired contact from it. Click **<OK>** to insert the selected contact. If there is more than one number of your selected contact, you can enter **[Select Number]** screen and select your desired number from the list, click **<OK>** to insert the selected number. If you want to insert several numbers from phone book, you can hold the **<Ctrl>** to select one by one.

- (3) Edit the SMS.

- (4) After editing, you can do the following operations:

- **Send:** Click **<Send>** to send the SMS to the recipient and the SMS will be saved in **[Outbox]** automatically.
- **Save:** Click **<Save>** to save the SMS to Draft Box.
- **Clear:** Click **<Clear>** to delete all the recipients' numbers and SMS.
- **Close:** Click **<Close>** to cancel the operation and close **[Write Sms]** interface.

**Notice:**

USB Modem supports the long SMS. (You can edit and send five Segments each time at most)



Inbox

[Inbox] stores all SMS you've received. Your PC can store up to 500 messages, while the number that you SIM card can store depends on the type of your SIM card.

If [Inbox] is full, the USB Modem will prompt you when there is a new SMS coming and the new SMS will replace the oldest read message of [Inbox].

If there is an unread SMS, the icon  will appear in status bar of the main screen, and the unread SMS in [Inbox] will be highlighted.

Enter the SMS interface and select [Inbox], the program will list all SMS in the [Inbox] for you.

**Notice:**

If the sender's number has been stored in the phone book, the name will be displayed or only displayed as Unknown.

You can arrange the order for all SMS by Name, Mobile, Datetime or Content respectively. Click <Name>, <Mobile>, <Datetime> or <Content> to arrange them by ascending sort or descending sort. Press the ▲ key to arrange order by ascending sort, while press the ▼ key to arrange order by descending sort. After arranging order, there will appear an order symbol before the item.

View a SMS

- (1) Select the SMS you want to read.
- (2) Click <Read> or dblick the SMS to view it.

Reply a SMS

- (1) Select the SMS you want to reply.
- (2) Click **<Reply>** to enter **[Write SMS]** screen, and the sender's number will appear in number box automatically, or you can modify the number by yourself.
- (3) Edit the SMS.
- (4) Click **<Send>** to send the SMS

Delete a SMS

- (1) Select a SMS or several SMS
- (2) Click **<Delete>**, if you are sure you want to delete the selected SMS, click **<Yes>** in the dialog box to delete the SMS.

Clear Inbox

Click **<Del All>**, if you are sure you want to delete all SMS in **[Inbox]**, click **[Yes]** in the dialog box to delete all SMS in **[Inbox]**.

Forward a SMS

- (1) Select the SMS you want to forward.
- (2) Click **<Forward>** to enter the Sending SMS interface.
- (3) Enter your desired number directly, or insert the number from phone book.
- (4) Click **<Send>** to forward the SMS directly, or after editing, click **<Send>** to send the SMS

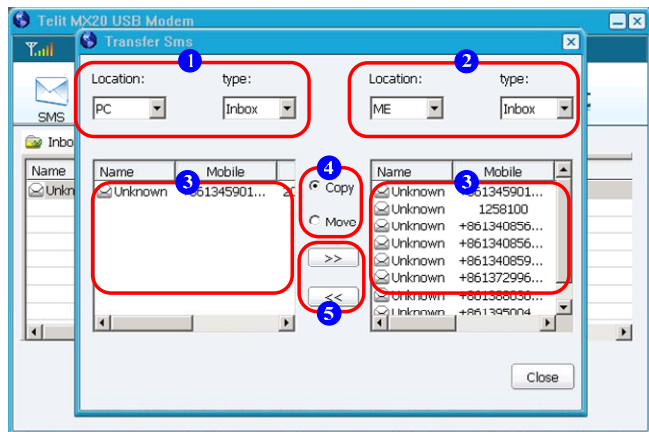
SMS storage management

The SMS stored in PC, USB Modem and USIM card can be transferred with each other.

Click **<Transfer>** and enter the **[Transfer SMS]** interface, please see the below figure:



**Notice**

The SMS stored in USB Modem won't be lost even if PC or USIM card is changed.



Area number	Introduction
1	SMS storage location 1
2	SMS storage location 2
3	Operation object area
4	Operation manner area
5	Operation direction area

The specific operations of message storage management show as follows:

- (1) In area 1 and 2, click '**Location**' list and select a storage location from PC, USB Modem and USIM card.
- (2) In area 1 and 2, click '**Type**' list to select a storage type from Inbox and Outbox.
- (3) Select the SMS you want to copy or remove in operation object area.
- (4) Select the operation manner as [**Copy**] or [**Move**] in operation manner area.
- (5) Click , and the SMS will be transferred from the left area of arrowhead to the right area; while click , the SMS will be transferred from the right area of arrowhead to the left area



Caution

When you select Copy, the original message is still saved; when you select Move, the original message is deleted.

Extract number

- (1) Select the desired SMS.
- (2) Click <**Extract**> and enter [**Select Position**] screen, and then you can select the storage position of the extracted number as [**Mobile**], [**Home**] or [**Company**].
- (3) Click <**OK**> to extract the number.

Export a SMS

Export [**Inbox**], [**Outbox**], [**Draft**] or all SMS of USB Modem to CSV files and stored in your PC.



Outbox

[**Outbox**] is used to store the SMS you have sent successfully or unsuccessfully. The operations for the [**Outbox**] is similar to that of [**Inbox**], so please refer to that for details.




Draft

Click <**Save**> while editing a SMS, then the SMS will be stored in [**Draft**]. The operations for the SMS of [**Draft**] is similar to that of [**Inbox**], please refer to that for details.

6. Contacts

The USB Modem can store 100 contact entries; and the memory of USIM card depends on the USIM card type.

You can create, modify, delete, or search for a contact entry. The USB Modem also supports import and export of contact entries, so you can send the contact entries from USB Modem to PC, in order to be convenient for management.

Click , and enter Contacts interface.



The management of contacts

New contact

The detailed operations for creating a new contact show as follows:

- (1) Click **<Add>** to enter **[Contact]** interface.
- (2) Fill in the contact's information, such as Name, Mobile, Home, Company, Email and Remark.
- (3) Click **<OK>** to store the contact's information.

Modify a contact

The detailed operations for modifying a contact show as follows:

- (1) Select the contact entry you want to modify, then doubleclick the entry or click **<Edit>** to enter **[Contact]** interface.
- (2) Edit the contact's information.
- (3) Click **<OK>** to store the contact's information.

Delete a contact

The detailed operations for deleting a contact show as follows:

- (1) Select the contact entry you want to delete.

- (2) Click **<Delete>**.
- (3) If you confirm to delete, click **<Yes>** in the prompt box.



Application of contact entries

Send SMS

You can select a contact entry and send SMS directly, and the specific operations show as follows:

- (1) Select a contact entry.
- (2) Click **<Send SMS>**, if there is only one number in the contact entry, enter **[Write SMS]** interface; while there is more than one number in the contact entry, enter **[Select Number]**, after selecting one number from it, click **<OK>** to enter **[Write SMS]**, and the USB Modem will abstract the phone number automatically. If you want send SMS to many people, click **<Phone>** and enter **[Select Contact]** screen. As for the detailed operations, please see "New SMS" at P11.
- (3) After editing SMS, click **<Send>** to send the SMS.



Notice

For the first step, you can select multiple contact entries and send to many people. The step 2 and 3 are similar.

Search for a contact entry

The specific operation steps of searching for a contact entry are as follows:

- (1) Click **<Search>** and enter **[Search Contact]** interface.
- (2) Enter search conditions: You can enter either the contact name or phone number to search for your desired contact.

- (3) Click **<Search>** and the first contact entry meeting with the condition will be highlighted. If there are many contact entries which meet with the condition, you can click **<Ahead>** or **<Next>** to view the previous or the next entry.



The storage management of contact

Import contact

You can import the contact file with the appointed format from PC to USB Modem.



Notice

The USB Modem supports the contact file that can be imported are the files with VCF format and CSV format.

Export contact

You can export the contact file with the appointed format

The specific steps are as follows:

- (1) Click **<Export>** and open the Save dialog box.
- (2) First select your desired storage route, then input the contact file name and select its storage format as VCF and CSV.
- (3) Click **<Save>**, and the contacts of your USB Modem will be exported as the file with appointed format and stored in your PC.

Storage management of contact

Click **<Transfer>** and enter **[Transfer Dialog]** screen, so you can manage the contact entries stored in PC, USB Modem and USIM card. The operation steps show as follows:

- (1) Select the storage location of two contact entries from PC, USB Modem and USIM card,

- (2) Select the contact entry needing to be transferred, and your selected area is source area, while the other area is target area.
- (3) Press transmission manner button and activate file transfer function, so your selected contact entry will be transferred from source area to target area. The arrowhead of **[Transfer Dialog]** screen shows the transmission direction

The USB Modem provides four kinds of transfer methods:

- Click **<Copy Some>**: You can copy one or many contact entries from source area to target area.
- Click **<Move Some>**: You can move one or many contact entries from source area to target area.
- Click **<Copy All>**: You can copy all contact entries from source area to target area.
- Click **<Move All>**: You can move all contact entries from source area to target area.

7. Options Settings

Click  in Toolbar to enter **Options function** screen.



General setting

Click [**General**] option and you have access to some security and power settings for USB Modem.

Security setting

You can set a PIN code. The PIN code is the personal identification number code supplied with your USIM card; with the PIN code, you can protect your USIM card from the unauthorized use by other people. In addition, you can also modify the PIN code and set whether to input PIN code or not while activating USB Modem.



Caution

If you input PIN code incorrectly three times in succession, USIM card will be locked automatically and you need to input PUK code to unlock it. (Usually, PUK code is supplied with USIM card. If you do not have your PUK code, please contact your Service Provider).

■ Enable PIN

You can enable PIN code checking function. After activating PIN code, only when you input the correct PIN code can you use the USB Modem. The steps for enabling PIN code are as follows:

- (1) Click <**Enable Pin**> to enter [**Enable PIN**] interface.
- (2) After inputting correct PIN code, click <**OK**> and you can enable PIN code.

■ Modify PIN

You can modify PIN code by yourself. Make sure to enable PIN code

before modifying. The detailed operation of modifying PIN code is as follows:

- (1) Click **<Modify Pin>** to enter **[Modify PIN Code]** interface.
- (2) After inputting old PIN code correctly, input the new PIN code twice. (for 4-8 digit bits)
- (3) Click **<OK>** and finish modifying.

■ Disable PIN

You can disable PIN code checking function if you don't need it. The detailed operations are as follows:

- (1) Click **<Disable Pin>** to enter **[Disable PIN]** interface.
- (2) After inputting correct PIN code, click **<OK>** and the Pin code check function will be disabled.

■ Unlock PIN

If your PIN code is locked, you can unlock it with this function(If you input PUK code incorrectly ten times in succession, USIM card can't be used any more and you should contact your service provider for a new SIM card).The specific operations are as follows:

- (1) Click **<Unlock Pin>** and enter **[PUK Unlock PIN Code]** interface.
- (2) Input the correct PUK code from operator.
- (3) Input new PIN code twice (for 4-8 numbers).
- (4) Click **<OK>** and finish unlocking.

Power setting

Click**<ON>/<OFF>** to activate/close the USB Modem power.



Messaging settings

Set the relative parameter related to messaging:

- **Message Center:** Input message center number which is used for sending text message, if you do not have this number, your Service Provider will be able to provide you with it.
- **Preferred Storage:** Select where to preferred storage from [PC], [ME] and [USIM].
- **Validity Period:** When the recipient can't receive the message you've sent, the message center will send the message again in the valid period you set. The USB Modem provides 6 types of validity period: [1 hour], [6 hours], [1 day], [3 days], [1 week], and [1 year].
- **Delivery Report:** Set whether to receive the message delivery report so as to check whether your recipient has got the message or not.



Network setting

Auto Select

- (1) You can set the network automatically, there are four types: [Only GPRS/EDGE], [Only UMTS], [GPRS/EDGE preferred] and [UMTS preferred].
- (2) Click<Set>and finish network setting.

Manual Select

- (1) Click<Refresh>to list all available modes, each including [Status], [Operator Name], [Numeric Symbol] and [Network Type].
- (2) Select the desired network and click <Select> to activate it.

8. Troubleshooting

Please check to see if any problems you have encountered in respect to the use of your USB Modem are described in the below tables. If you are unable to resolve the problem, please contact with the authorized maintenance center.



Can't access to Internet

Possible reasons	Solutions
Haven't subscribed to the wireless data service	Please consult with your Service Provider to get the service.
Have no relative configuration of Internet services, or the configuration error.	Please configure by referring to "Internet connection"



PIN/ PUK code lock

Possible reasons	Solutions
PIN Code (Personal Identification code)/ PUK Code (Unlock PIN code) input error	Please input correct password



Caution

1 .If PIN code is input incorrectly three times in succession, and then

many functions of USIM card and USB Modem will be locked, please refer to “Enter Dashboard Management Program” section.

2. If you are unsure of your PIN code and/or PUK code, please contact your Service Provider.



USIM card state is incorrect

Possible reasons	Solutions
Insert the USIM card incorrectly	Please inset the USIM card correctly according to the method in user manual and as shown on the USB modem.
The USIM card has been damaged	Please replace the USIM card

9. USB Modem Maintenance

USB Modem is a high-precision electronic product, so please maintain it carefully. The following advice can help you to maintain USB Modem and prolong its life.

- The USB Modem and its spare parts should be put out of the reach of the children.
- Keep the USB Modem dry. Moisture or water will corrupt circuit board.
- Don't lay USB Modem in places with dust, or it will affect the normal use of USB Modem.
- Don't lay the USB Modem in places with too high temperature. Because high temperature will shorten the life of electronic devices.
- Don't lay the USB Modem in places with too low temperature. Otherwise, when the temperature rises to the normal temperature, there will be moisture in USB Modem and destroy the electronic circuit board of USB Modem.
- Don't throw, knock or shake USB Modem intensely, in case to damage the electronic circuit board and structure of USB Modem.
- Use soft cloth to clean the USB Modem gently. Do not use rough chemical or abrasive cleaners to clean it.
- Don't draw your USB Modem with paint, in case the parts that can be taken down will be stuck and affect its normal use.

10. Safety Information

Using environment

- Please put USB Modem away from magnetic devices, such as magnetic cards and floppy disk.
- Please don't put the USB Modem in instruments with strong electromagnetism, such as electromagnetism pot and microwave oven or it will cause circuit failure.
- Please don't lay and use USB Modem in places of high temperature and flammable gas, such as fire or heater, for fear cause gas burnt, USB Modem failure, fire or explosion.
- Because your USB Modem isn't waterproof, please keep it dry while using.
- Please avoid intense impact or shake on USB Modem.
- In thunderstorm weather, please try not to use the device, to avoid lighting strike or other injury.
- Please put USB Modem out of the children's reach, please don't allow children to use USB Modem without people around, or the children may be injured.
- Don't touch the antenna, otherwise, it will influence the RF performance and make the power of USB Modem higher than in normal use.

Medical devices

Please turn off your USB Modem in areas near the electronic medical equipments (such as heart pacemaker, hearing aids and etc). Most medical equipments can shield the RF signal of USB Modem, but some can't. So if you are not sure whether the medical equipment has the function of shielding RF signal, please switch off your device.



The notice of using spare parts

- Please put all spare parts of USB Modem (such as USIM card,) out of the children's reach, for fear danger occurs.
- Because USB Modem spare parts aren't water-proofing, so please keep all spare parts dry.



Other safety information

Please obey the local laws about disposing of the USB Modem packing material and old USB Modem, and try to support recycle action.