

Caution: The user is cautioned that changes and modifications made to the equipment without the approval of manufacturer could void the user's authority to operate this equipment.

Notes: This equipment has been tested and found to comply with the limits for a Class B digital device, pursuant to part 15 of the FCC Rules. These limits are designed to provide reasonable protection against harmful interference in a residential installation. This equipment generates, uses and can radiate radio frequency energy and, if not installed and used in accordance with the instructions, may cause harmful interference to radio communications. However, there is no guarantee that interference will not occur in a particular installation. If this equipment does cause harmful interference to radio or television reception, which can be determined by turning the equipment off and on, the user is encouraged to try to correct the interference by one or more of the following measures:

- Reorient or relocate the receiving antenna.
- Increase the separation between the equipment and receiver.
- Connect the equipment into an outlet on a circuit different from that to which the receiver is connected.
- Consult the dealer or an experienced radio/TV technician for help.

FCC Warning:

This device complies with part 15 of the FCC Rules. Operation is subject to the following two conditions: (1) This device may not cause harmful interference, and (2) this device must accept any interference received, including interference that may cause undesired operation.

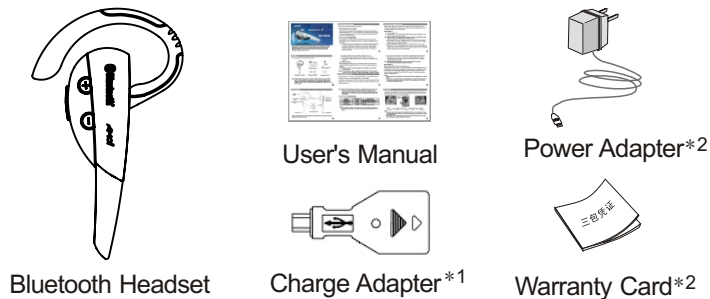


Congratulations on selecting Amoi Bluetooth Headset BTH-003!

As you know, BTH-003, not just gets a fashion appearance, but also wears well. Most importantly, it is convenient for you to call your friends or get calls, when in the office, walking on the way, or driving. It can be adapted to most devices that support the Bluetooth Headset and Hands-free profiles, like Bluetooth mobile phone, desktop computer, notebook computer or PDA.

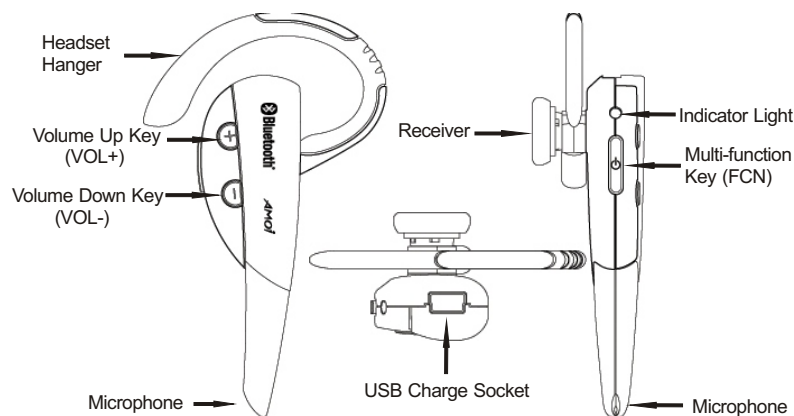
Packing

Your package contains the following items:



Note: If this BTH-003 is provided as an accessory of AMOI mobile phone, items marked with *2 will not be attached in your package. In this case, connecting the charge adapter *1 with the phone's AC adapter, you will get a different AC adapter for the headset. It works as well. If this headset is sold separately, items marked with *1 will not be attached.

Your Headset



Pictures in this user's manual are for reference only. AMOI reserves the right to change the package items without prior notice.

Before Using your headset

Before using, please read the following guidelines.

1.Check phone compatibility

Amoi BTH-003 is compatible with most Bluetooth phones that are compliant with Bluetooth Specification V1.1 or higher specification, and support the headset profile and hands-free profile. Make sure your phone has Bluetooth capability by visiting your phone manufacturer's web.

2.Charge BTH-003

A rechargeable Li-ion battery powers this BTH-003. Be sure to fully charge the battery before using the headset for the first time. To charge the battery, follow the steps below:

- Insert one terminal of the AC adapter into the USB charge socket of BTH-003 and another into the AC wall outlet. Or you can use the universal USB to charge the headset, that is, to insert one terminal of the universal USB to BTH-003, and another to a device that supports USB such as desktop or notebook computers.

- Charge the headset until the blue light on BTH-003 turns off.
- When finished, please disconnect the AC adapter and the headset.
- The headset is off after finishing charging or cutting the power supply during charging.

Low Battery Indication

When the battery gets extremely low, the headset will utter three beeps every 2 minutes and the blue indicator light will dim out. In this case, please charge your headset.

Note: BTH-003 cannot be used when charging. See more details in section "battery & charging" below.

Warning: Do not attempt to charge the headset with anything other than the AC adapter provided. Use of unauthorized AC adapter might damage or destroy the headset.

Turning headset On / Off

Hold FCN key for 4 ~ 7s to turn on the headset. When it is on, the receiver will utter two beeps and the blue indicator light will flash for 5 times rapidly.

In standby or pairing mode, hold FCN for about 2s to turn the headset off. When turning it off, you will hear two beeps and the blue indicator light will quickly flash for 5 times and then go out.

Notes: Please don't hold FCN for more than 8s, or the headset will go into pairing mode and the blue indicator light will keep flashing rapidly and ceaselessly. If this happens, turn off the headset, wait for 3 to 5 seconds, and repeat process to turn on the headset; or wait for about 2 minutes, the headset will go to standby mode automatically.

Headset Status

The following table shows the different statuses of the receiver and indicator light when the headset works in different mode.

Status	What you hear	What you see
Standby Mode	No tone	Flash blue once for every 6s
Talk Mode	Ring	Flash blue 4 times for every 6s
Connecting Mode	No tone	Flash blue 3 times for every 6s
Low Battery	Three alert beeps	Dim out
Active Connecting Mode	No tone	Flash blue twice for every 6s

Notes:

- Your headset is in standby mode when it's on, but not connected with the phone.
- In active connecting mode, your headset will search for Bluetooth devices around actively.

"Pair" to your Bluetooth Phone

Before pairing, please put the headset near the Bluetooth phone. Distance less than 1 meter would be better. Also, please make sure there is no barrier between the phone and the headset. Metal barrier may cause failure.

Match Method 1:

- Turn the headset off.
- Hold FCN for 8 ~ 10s until the indicator light flashes rapidly and ceaselessly. It will keep in this status for about 2 minutes.

Note: During the first 4 ~ 6s, the light would flash quickly for 5 times. But please keep holding the key, or it will go into standby mode, not the pairing mode.

- Make correct settings on your Bluetooth mobile phone. Typically, the steps involve going to "Setup", "Connect", or "Bluetooth" menu on your phone and then selecting the option to "discover" a Bluetooth device.
- After the "BTH-003" headset being found, the mobile will ask if you want to get a pairing with it. Confirm this by pressing "yes" or "OK", then enter the pre-programmed passkey "1234" and press "OK" to pair your headset and mobile phone. The headset will be connected with your phone automatically.

- When pairing and connection are all finished, the indicator light will flash slowly (3 times every 6 seconds). Thus, a unique and encrypted wireless link has been created between the headset and phone. At the same time, the phone displays 'Pairing/Connection Successful'.

Note: If the light keeps flashing quickly, or the phone displays 'Match /Connection Unsuccessful', please repeat the processes to try again.

Match Method 2:

Be sure the Bluetooth function of your cellphone is on.

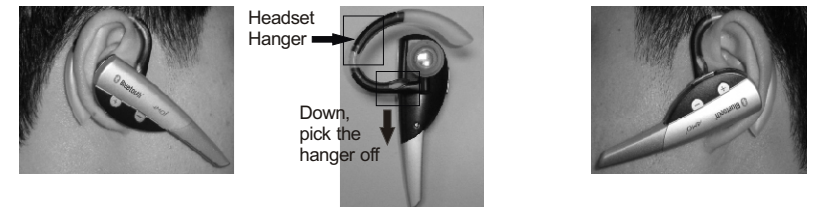
Follow steps A and B in method 1 to go into pairing mode, then press FCN key once, your headset will go into Active Connecting Mode and begin to search for the Bluetooth device around actively. The indicator light will flash in blue for 2 times every 6 seconds in this mode. The phone will display "Pair with? BTH-003", accept it. Then follow the operation described in Match Method 1.

Notes:

- When pairing, the phone password or PIN code may be required. It depends on your phone model.
- If it's found in 2 minutes that there is no Bluetooth phone to match with the headset, it will exit the pairing mode and go into standby mode. The last successful match information will be kept in the headset memory.

How to wear

You can wear the headset on the left or right ear. Adjust the headset hanger as shown in the following pictures. Also you can wear the headset without the hanger, pick the hanger off in the way as shown in the middle picture below.



Wear on the right ear → Adjust the hanger → Turn Forward → Rotate Right → Wear on the left ear

Notes:

- For optimal performance, please put the headset and the phone on the same side of your body. Generally speaking, if there is no barrier between the phone and headset, you will get better performance.
- The adjustment of the hanger depends on the built-in flexible metal tinsel, but the tinsel is easy to damage, so please be careful when adjusting.

Basic Operations

You can use the headset when it is on and has been connected with your Bluetooth mobile phone.

1.Making a Call

Using phone's keypad

Dial number on keyboard, press phone's "send" key, and use BTH-003 to talk with your friend.

Voice Dialing

Please ensure that you've set up voice tags on your phone.

Press the FCN key once, and you will hear the voice-activated tone, and then say the related voice command of the number you want to dial.

Voice Redialing

Please make sure that your phone supports the voice redialing and has already set up the redialing voice command. Press FCN key once, and you will hear the voice-activated tone, and then say the redialing voice command to redial.

Manual Redialing

Please ensure that your phone supports headset redialing manually.

In standby mode, press VOL- (Volume Down Key) for 2s and release. When you hear one short beep, redialing begins.

Note: To improve the successful rate of the voice dialing, please use the headset to record the voice command.

2.Ending a Call

Press FCN to end or end the call from phone's keyboard.

3.Answering a Call

After you hear the ring tone, press FCN once. Or you can answer the call by using the keyboard, but maybe you need to press FCN once to transfer the voice from the phone to the headset.

It depends on your phone. Please refer to the phone's user manual for more details.

Note: Generally speaking, the ring of the headset comes later than that of the phone.

4.Rejecting a Call

Hold FCN for 2s, you'll hear two beeps, and then release the key; or you can reject the call through the phone directly.

5.Transferring call

When using the headset to answer the call, hold VOL+ (Volume Up Key) until you hear one short beep, the call will be transferred to the phone. Press FCN once to switch the call back.

6.Call-Waiting

During a call, if there is another call coming, you will hear two beeps from your headset. At this time, you can press FCN once to end the current call, and press FCN once again to get the new call.

7.Volume Adjusting

In standby mode, use the volume up & down key to adjust the volume, VOL+ to up and VOL- to down. There are 16 levels to be adjusted. The volume cannot be adjusted in standby mode.

Note: Call rejecting, diverting or waiting needs the support of your phone, and the cue tone may also vary with different phones. For more details, please refer to the phone's user manual.

Resetting your headset

If the headset can't respond or the blue light will not turn on or off after pairing or flashing abnormally, you may need to Reset your headset.

- Insert the charging plug of the AC adapter into the USB charging socket of the headset.
- Insert the power adapter into the AC power socket.
- Cut the power after 3 seconds.
- Unplug the adapter from the headset.

Care & Maintenance

The suggestions below will help you to prolong the life span of your headset.

- You'd better turn the headset off when putting it in the pocket, or an unexpected call may be made by accidentally pressing FCN.
- Don't put the headset in moist or liquid.
- Don't use organic solvent to clean it.
- Don't store it in hot or cold areas.
- Don't expose it to the fire, or it may cause explosion.

- Put it away from sharp objects or it may cause damage or scratch.
- Don't insert any object into the headset, or it may damage the internal parts of the headset.
- Don't dismantle the headset without permission.
- Put the headset in dry area and keep it away from dust.

This device complies with Part 15 of the FCC Rules. Operation is subject to the following two conditions:

(1) this device may not cause harmful interference, and (2) this device must accept any interference received, including interference that may cause undesired operation.

The antenna used for this transmitter must not be co-located or operating in conjunction with any other antenna or transmitter.

Battery & Charging

- Do not attempt to change the battery by yourself. The built-in Li-on battery is irreplaceable.
- To prolong battery's life, please follow the instruction of this user manual to charge the battery.

- Please only use the appointed AC adapter to charge the battery.
- Don't dismantle the AC adapter without permission, or it may cause unexpected danger.
- Don't use the AC adapter in the outside or moist.
- Avoid charging the battery in hot or cold areas.

Frequently asked questions

Q: How far away from my phone will my BTH-003 work?

A: The operating range is typically up to 30 feet, with much better performance when no barrier between them.

Q: Will BTH-003 work with laptops, PCs, and PDAs?

A: BTH-003 will work with devices that are compliant with Bluetooth specification V1.1 or higher specifications and support the headset and/or hands-free profile(s). Maybe you need some software while using, just follow the user guide of the device related.

Q: Will anything cause interference with my conversation when I'm using my BTH-003?

A: Devices such as cordless phones and wireless networking equipment may cause interference with your conversation, usually adding a crackling noise. To reduce any interference, keep the headset away from other devices that use or produce radio waves.

Q: Will my Amoi BTH-003 interfere with my car's electronics, radio, or computer?

A: BTH-003 produces significantly less power than a typical mobile phone; it also only emits signals that are in compliant with international Bluetooth standard. Therefore, you should not expect any interference with standard consumer-grade electronics equipment.

Q: Can other Bluetooth phone users hear my conversation?

A: When you pair your headset to your Bluetooth phone, you are creating a private link between only these two devices. The third parties do not easily monitor the wireless Bluetooth technology used in your headset.

Q: How do I take care of my BTH-003?

A: To clean the headset, use a clean, soft cloth that is slightly damp.

Specification

Model: BTH-003

Bluetooth Standard: BlueTooth specification V1.2

Profile Supported: BlueTooth Headset Profile & BlueTooth handsfree Profile

Radio Frequency: 2.45GHz ISM

Transmitter Power: Class 2

Communication Distance: More than 10m (No barrier)

Weight: About 17g

Talk Time: About 8 hours (depends on cellphone model)

Standby Time: About 200 hours (depends on cellphone model)

Battery: Chargeable Li-on Battery

Charge Time: About 1.5 hours (depends on cellphone model)

AMOI

AMOI ELECTRONICS CO., LTD.

Add: 45Tiyu Rd, Siming District, Xiamen
FJ 361012, P.R. China

Tel: 86-592-5058123

Fax: 86-592-5091166

Http://www.amoi.com



FKV2.198.985SS