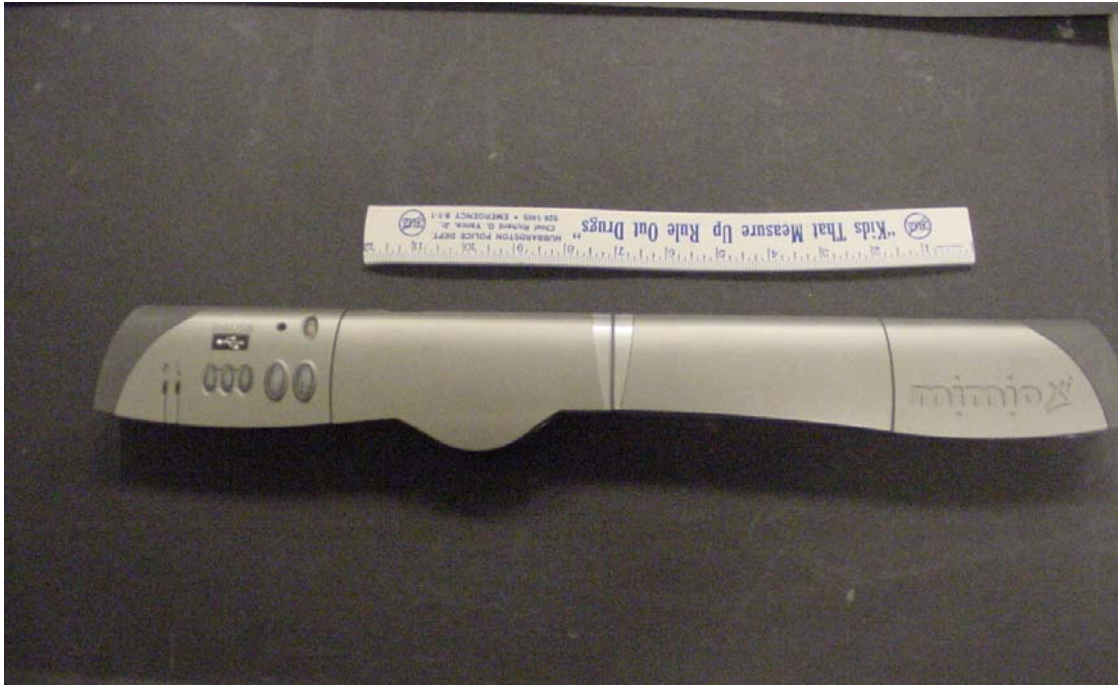




Rear view of EUT and its host, EUT is at the left end of the photo and is removed from the wand by pressing the indent.



Top side of EUT and wand, EUT is the section to the left of the photo with the keypad.

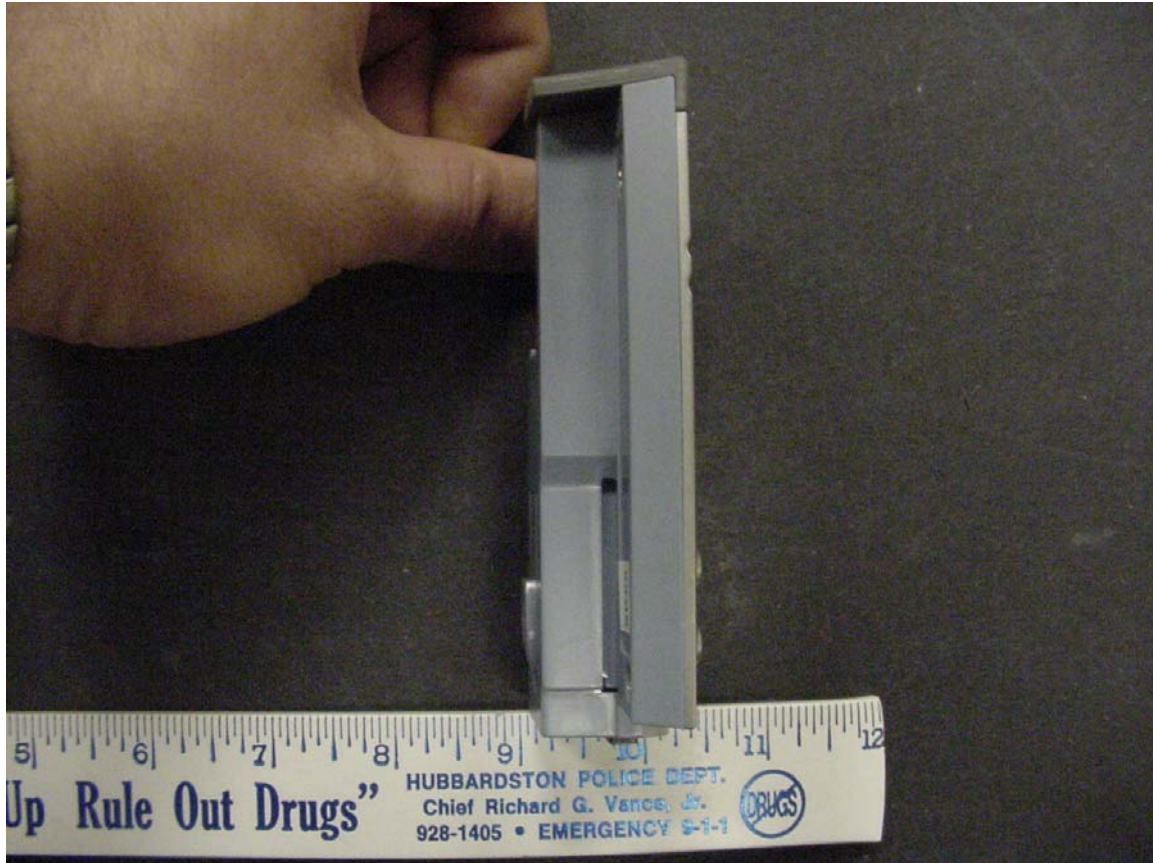


Rear of EUT as it appears when removed from the wand. The inset area where the "SR25" label is located is the location for the FCC and IC ID label.





Front of EUT as it appears when removed from the wand.



Side view of EUT

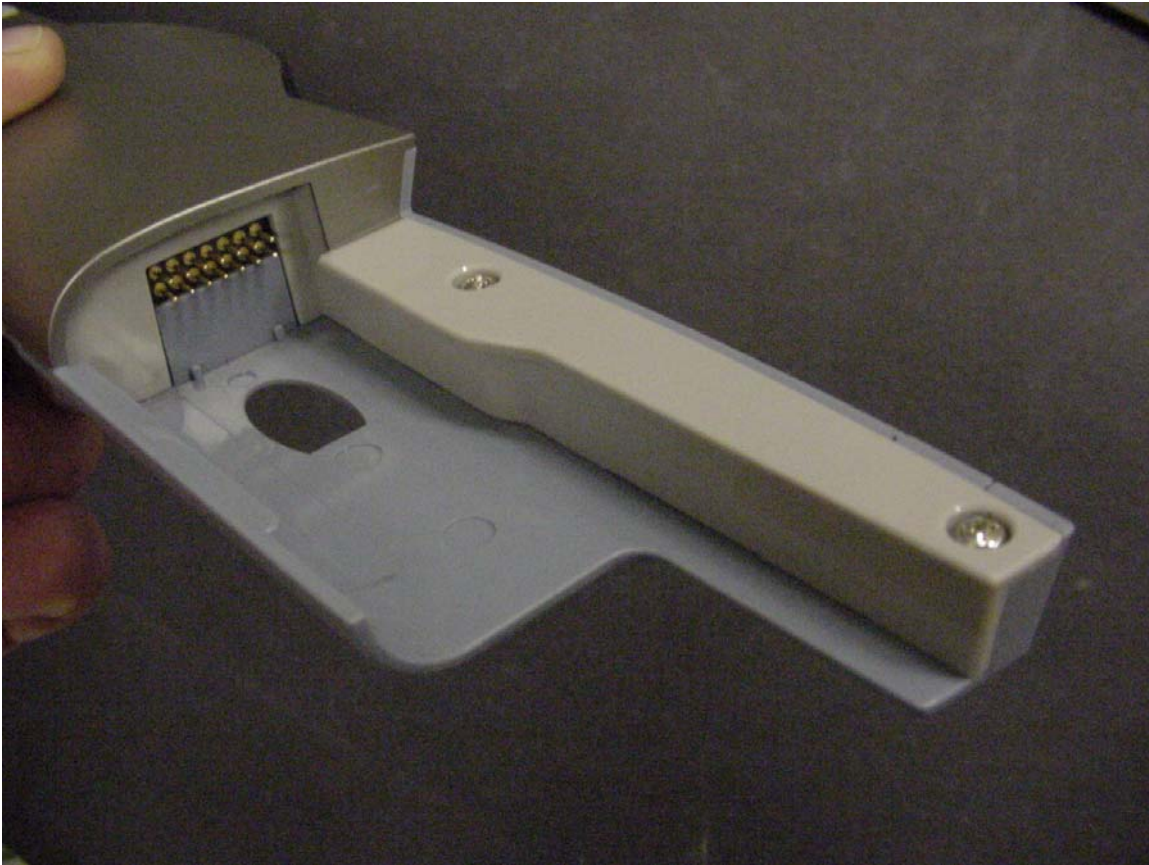


End view of EUT, shows the power input jack.





End view of EUT, shows the connector for wand communications and power.



Shows the wand end where the EUT would be connected.