



# TALA™

powered by Lucid®

## PREMIUM IN-THE-EAR OTC HEARING AIDS

Android or iOS device  
compatible but not  
required for use

**MANUAL  
ENGLISH**



# Welcome Aboard!

We're honored you've chosen to be a part of the Lucid Hearing™ family! Our commitment to you is simple:

*To help you hear better!*

Your journey to better hearing begins now. Every successful journey has a guide to help you get the most out of the adventure! There are two key guides at your disposal. This booklet is a quick and easy reference for you to get started. And for additional details and information, be sure to check out our "how to" video series at **lucidhearing.com**!

*Let's get started!*

**WARNING: If you are younger than 18, do not use this.**

You should talk to a doctor, preferably an ear-nose-throat doctor (an ENT), because your condition needs specialized care. Over-the-counter hearing aids are only for users who are age 18 or older.

This OTC hearing aid is for users who are 18 and older. People who are younger than 18 with hearing loss should see a doctor, preferably an ENT, because they may need medical testing and management. Hearing loss can affect speech and learning, so professional fitting and continuing care are also important.

## **WARNING: When to See a Doctor**

If you have any of the problems listed below, please see a doctor, preferably an ear-nose-throat doctor (an ENT).

- Your ear has a birth defect or an unusual shape.
- Your ear was injured or deformed in an accident.
- You saw blood, puss, or fluid coming out of your ear in the past 6 months.
- Your ear feels painful or uncomfortable.
- You have a lot of ear wax, or you think something could be in your ear.
- You get really dizzy or have a feeling of spinning or swaying (called vertigo).
- Your hearing changed suddenly in the past 6 months.
- Your hearing changes: it gets worse then gets better again.
- You have worse hearing in one ear.
- You hear ringing or buzzing in only one ear.

## **WARNING: This hearing aid should not cause pain when inserting it.**

Remove this device from your ear if it causes pain or discomfort when you insert or place it. To try again, make sure to follow the instructions. If you feel pain or discomfort again, contact the manufacturer. If your pain or discomfort doesn't go away, contact your hearing healthcare professional. You can also report this to FDA as an adverse event according to the instructions that appear later.

## **Caution: This is not hearing protection.**

You should remove this device if you experience overly loud sounds, whether short or long-lasting. If you're in a loud place, you should use the right kind of hearing protection instead of wearing this device. In general, if you would use ear plugs in a loud place, you should remove this device and use ear plugs.

**Caution: The sound output should not be uncomfortable or painful.**

You should turn down the volume or remove the device if the sound output is uncomfortably loud or painful. If you consistently need to turn the volume down, you may need to further adjust your device.

**Caution: You might need medical help if a piece gets stuck in your ear.**

If any part of your hearing aid, like the ear tip, gets stuck in your ear, and you can't easily remove it with your fingers, get medical help as soon as you can. You should not try to use tweezers or cotton swabs because they can push the part farther into your ear, injuring your eardrum or ear canal, possibly seriously.

**Note: If you remain concerned, consult a professional.**

If you try this device and continue to struggle

with or remain concerned about your hearing, you should consult with a hearing healthcare professional.

**Note: What you might expect when you start using a hearing aid.**

A hearing aid can benefit many people with hearing loss. However, you should know it will not restore normal hearing, and you may still have some difficulty hearing over noise. Further, a hearing aid will not prevent or improve a medical condition that causes hearing loss.

People who start using hearing aids sometimes need a few weeks to get used to them. Similarly, many people find that training or counseling can help them get more out of their devices.

If you have hearing loss in both ears, you might get more out of using hearing aids in both, especially

in situations that make you tired from listening—for example, noisy environments.

**Note: Tell FDA about injuries, malfunctions, or other adverse events.**

To report a problem involving your hearing aid, you should submit information to FDA as soon as possible after the problem. FDA calls them "adverse events," and they might include: skin irritation in your ear, injury from the device (like cuts or scratches, or burns from an overheated battery), pieces of the device getting stuck in your ear, suddenly worsening hearing loss from using the device, etc.

Instructions for reporting are available at <https://www.fda.gov/Safety/MedWatch>, or call 1-800-FDA-1088. You can also download a form to mail to FDA.

## CONTENTS

|  |       |
|--|-------|
| Quick Start Guide.....                   | 8     |
| Getting to Know Tala™ .....              | 10    |
| What's Inside.....                       | 11    |
| Getting to Know Tala™ Charging Case..... | 12    |
| Charging Tala™ .....                     | 13    |
| Charging Lights .....                    | 14    |
| Wearing Your New Hearing Aids .....      | 15    |
| Download the Lucid Hearing App .....     | 16    |
| How to Adjust Volume and Programs .....  | 17    |
| Start-Up and Pairing.....                | 18-19 |
| Care and Cleaning Instructions.....      | 20-21 |
| How to Clean Tala™ Hearing Aids .....    | 19    |
| Replacing Wax Stop .....                 | 22-23 |
| Choosing the Correct Ear Tip.....        | 24    |
| Replacing the Ear Tips.....              | 25    |
| Troubleshooting.....                     | 26-27 |
| Technical Data .....                     | 28    |
| Warranty .....                           | 29    |
| Compliance.....                          | 30-31 |
| Battery Safety .....                     | 32-33 |

## Getting to Know Tala™

### NEED DETAILS



Tala™  
Hearing Aids

### TIPS



Wax Guards



Cleaning Tool

## What's Inside



Charging Case



USB-C  
Charging  
Cable

## Quick Start Guide

Welcome to your new Tala™ and welcome to a whole new world of hearing! These devices are designed to help you hear better and allow you to interact with the world in ways you may not have done in many years. We wanted to give you a quick guide to getting started before getting into all the details contained herein...

**1 Prepare** Check your ears for any obstructions like ear wax and make sure your ears are dry. If possible, have a professional check your ears and remove any debris and wax build up.

**2 Charge** Charge your Tala™ device. Your Tala™ comes partially charged, but for the best experience you'll need to charge it fully using the included USB-C cable. For more detailed instructions, please see page 13.

**3 Choose** Choose your ear tips. Your Tala™ comes with X ear tip options and X sizes of each ear tip: vented, fully closed, and micro-vented. You'll want to select your ear tips depending on your hearing profile and ear size. Please refer to page 24 for further details on choosing the right ear tips.

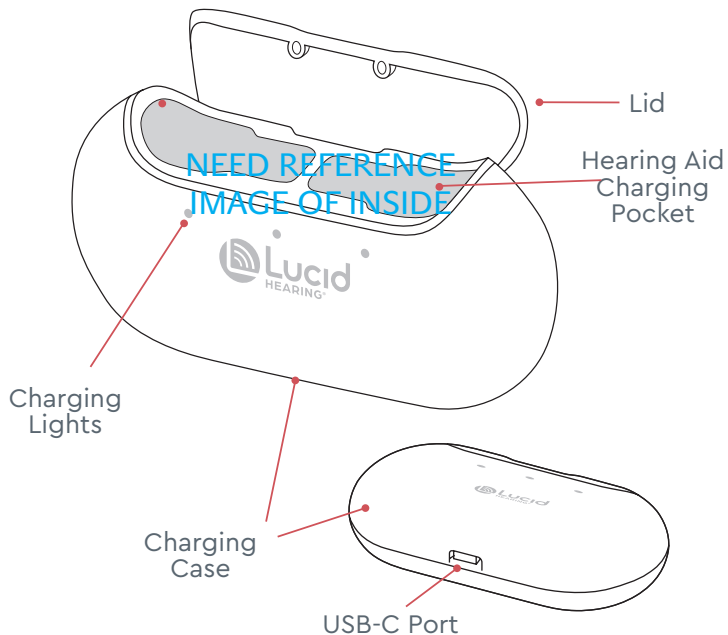
**4 Hear Better** Select the program that works best for you, adjust the volume, and enjoy better hearing! Please see page 17 for further information on which of the four programs is right for you.

**IMPORTANT: Place hearing aids inside the charging case to make any adjustments through the Lucid Hearing App.**



Use your phone camera to scan this code and download either the iPhone or Android app, depending on which type of phone you have. You can also search for "Lucid Hearing" in the App Store or on Google Play.

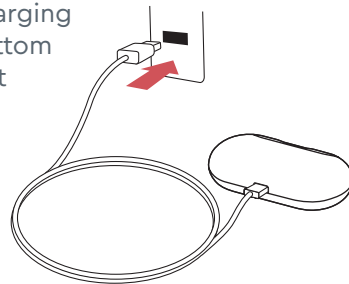
## Getting to Know Tala™ Charging Case



## Charging Tala™

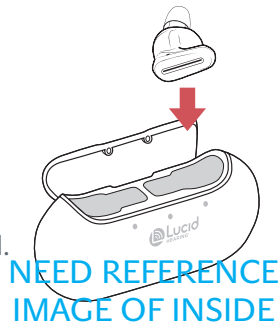
### 1 Charging case

Plug the USB-C end of the charging cable into the port on the bottom of the charging case. Connect the other end of the charging cable to a power source. The charging case is fully charged when the lower four lights illuminate. (See page 14)



### 2 Place Tala™ in its case

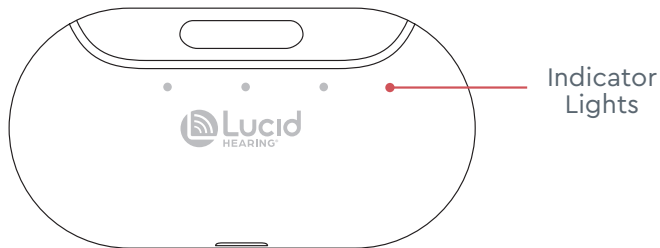
Hearing aids turn off and begin charging once placed inside the charging case. Hearing aids are fully charged when the row of 3 lights on the top are all illuminated. (~3 hours) (See page 14)





## Charging Lights

There are three indicator Lights. The two outside lights indicate when the plugged-in case has charged. The center light indicates when the hearing aids have charged.



Fully depleted hearing aids require 3 to 4 hours to be fully charged

### LED Indicator Lights

Case is Charging 

Case is Charged 

Hearing Aids are Charging 

Hearing Aids are Charged 

## Wearing Your New Hearing Aids

When inserting your hearing aids for the first time, there can be feedback (whistling) if your hearing aids are not fully inserted. We suggest you practice inserting them with the battery door slightly open until you have perfected this process. The adjustment period of wearing hearing aids takes time, but soon you'll be hearing clearly.

### How to insert your hearing aids:

**1** Grasp hearing aid between your thumb and forefinger



**2** Gently push the ear tip into the ear canal



## Download the Lucid Hearing App



# LucidShape™

Lucid Hearing App  
featuring LucidShape

Comprehensive real-time personalization with the ability to manage acoustics across any listening environment.

With the Lucid Hearing mobile App and Tala™, you can:

- Explore and select your preferred hearing program
- Monitor the battery status of your hearing aids

With LucidShape and Tala™, you can:

- Fine-tune your listening for the most customized experience
- Control the left and right hearing aids together or independently



Use your phone camera to scan this code and download either the iPhone or Android app, depending on which device you have.

You can also search for "Lucid Hearing" in the App Store or on Google Play.

## How to Adjust Volume and Programs

### Volume

The easiest way to adjust your hearing aids is within the Lucid Hearing App (See page 16).



### Programs

Your Tala™ hearing aids come preset with four scientifically developed acoustic programs. These programs were developed with extensive research in conjunction with a top audiology university to cover the majority of the population with mild-moderate hearing loss.



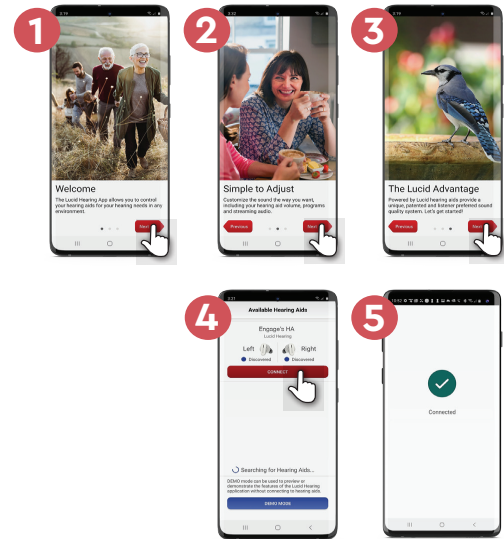
## Start-Up and Pairing

The first time you open the app you will be met with three introductory screens. Click "next" to continue to the next page.

Apple Users:



Android Users:



## Care and Cleaning Instructions

To ensure your hearing aids continue to work properly for years to come please note that you should avoid submerging in water, dropping from distances greater than 3 feet, or exposing to excessive heat for extended periods of time.

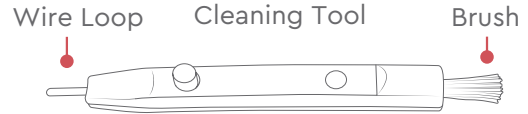


The most common cause of instrument failure is wax buildup and it is the easiest to avoid. By wiping your hearing aids, tubing, sound tip, ear tips and/or domes with a soft, dry cloth every day and carefully removing any traces of wax and debris, you will reduce wax buildup. Use the brush provided to enhance your cleaning by lightly brushing the sound ports. It is important to keep your hearing aids as clean as possible to maintain maximum performance and durability.

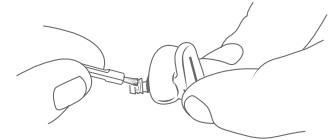


**Important:** Keep your hearing aids as clean as possible to maintain maximum performance.

## How to Clean Tala™ Hearing Aids



Use wire loop to clean wax from tips



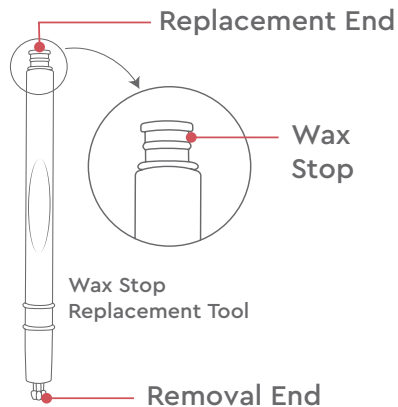
Use brush to clean off wax and dirt



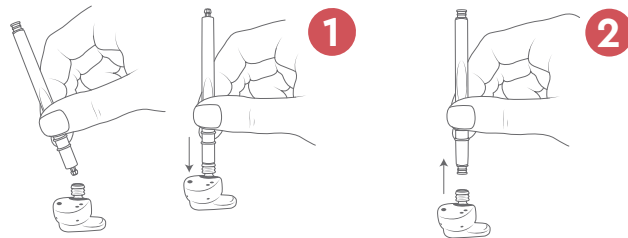
Brush microphone openings

## Replacing Wax Stop

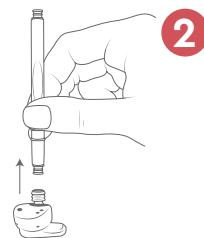
Your Tala™ Hearing Aids have a wax stop in the tip to prevent wax from getting inside the speaker. You should check daily for any obstruction to the wax stop. If you see wax inside you can replace it using the instructions on the next page.



**Warning:** Improper replacement could result in the wax stop coming out of the receiver and being lodged in the ear canal.



Before removing the wax stop, be sure to remove the dome tip. Insert removal end of replacement tool into used wax stop, centered in hearing aid receiver. This requires a firm push.



Pull replacement tool straight up to remove used wax stop.



Remove used wax stop from replacement tool and turn tool over to direct new wax stop towards tip.



Insert new wax stop into tip by wiggling it in place and pressing in firmly.

## Choosing the Correct Ear Tip

We have included a number of different dome tips for you to find the perfect fit. The tip should fit snugly enough to seal the ear, while not being uncomfortably too tight. Some experimentation may be necessary. You will notice there are two types of tips included.

### OPEN



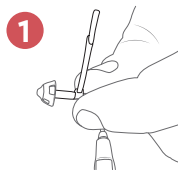
Open tips provide the best experience for streaming music and phone calls and provide a full, rich sound. They provide better amplification than the vented tips and can help minimize feedback, but may require a little longer to adjust to the sound of your own voice when you first start wearing them.

### VENTED

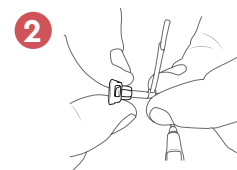


Vented tips can be more comfortable for those with mild hearing loss. They allow more of your own voice to pass through, but do not provide as rich of a sound experience when streaming audio from your phone.

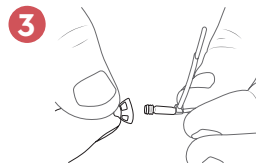
## Replacing the Ear Tips



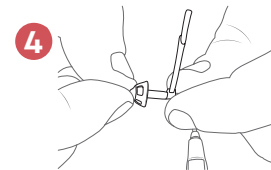
Hold the hearing aid by the base of the speaker housing.



Gently pull on the tip until it comes off. You may need to twist it using a back and forth motion.



Align the new tip with the dome facing outward.



Press the new tip onto the speaker housing until the wax stop is flush with the entrance to the dome tip.



**Note:** Improper replacement of ear tips could result in the ear tip coming off of the device and being lodged in the ear canal.

## Troubleshooting

| ISSUE               | POSSIBLE CAUSE                       | SOLUTIONS   |
|---------------------|--------------------------------------|---|
| No/Low sound output | Low battery                          | Replace battery with a new #13 battery  |
|                     | Wax build up in the wax stop         | Clean or replace the dome   |
|                     | Volume set too low                   | Use the app to increase the volume to a comfortable level   |
|                     | Tip not inserted properly            | Re-insert the tip   |
|                     | Hearing aid is damaged               | Contact Lucid Hearing Customer Service  |
|                     | A significant change in your hearing | Contact your hearing health care professional for an exam. Lucid Hearing Customer Service can recommend a specialist in your area |

| ISSUE                     | POSSIBLE CAUSE                   | SOLUTIONS  |
|---------------------------|----------------------------------|--|
| Whistling/ Feedback       | Tip not inserted properly        | Reinsert hearing aid tip   |
|                           | Tip damaged or is the wrong size | Replace tip with a new tip   |
|                           | Wax build-up in the ear canal    | Talk to your doctor or a hearing healthcare professional about how to best clean your ears |
| Device is not comfortable | Tip is too large or too small    | Try a different size tip   |

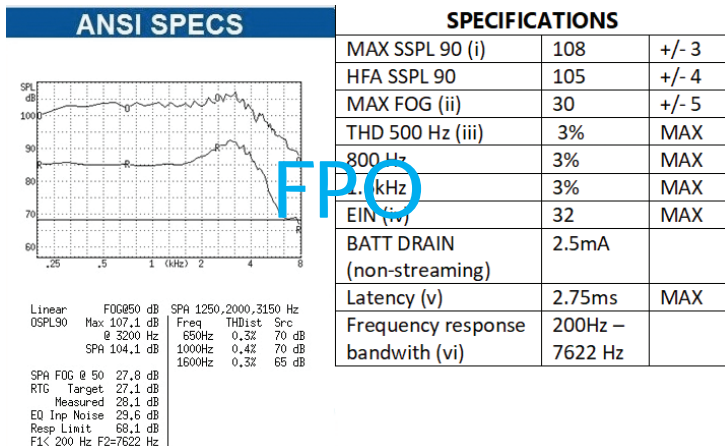
Still have issues? Reach out to us at **866-202-2527** or chat with us at **lucidhearing.com** and our specialists will be happy to help you.

**Your satisfaction is our number one priority!**

## Technical Data

## Warranty

Lucid Hearing In-the-Ear products are risk free with a 60 day return period and a 1 year manufacturer's warranty. To file a claim please call us at 866-458-8947.



**Warranty Warning:** Please do not attempt to make repairs yourself. Doing so could cause additional damage and will void any warranties.

- **Do not throw** or drop your instruments.
- **Do not immerse** hearing instruments in liquid or water.
- **Do not wear** during bathing, showering, or swimming.
- **Store out of the reach of children and pets.**
- **Do not expose** instruments to excessive heat, such as a stove top, microwave, dashboard of a hot car, or hair dryer.
- **Do not expose** the instruments to chemicals such as hair spray, insect repellent, perfume, or cosmetics.
- **Do not use** the product with higher volume for a long period of time, in order to avoid hearing damage. Stop using if discomfort occurs.
- **Do not disassemble** the device.
- **Avoid use in potential explosive** or dangerous situations.
- **To avoid possible electromagnetic radiation**, the devices should be removed in any high frequency, heat treatment or operation, radiotherapy and strong magnetic field environments.



## Compliance

### FCC statement

This device complies with Part 15 of the FCC Rules.

Operation is subject to the following two conditions:

- (1) This device may not cause harmful interference, and;
- (2) This device must accept any interference received, including interference that may cause undesired operation

FCC ID: RWT-BAVOTW

NOTE: CHANGES OR MODIFICATIONS NOT EXPRESSLY APPROVED BY THE PARTY RESPONSIBLE FOR COMPLIANCE COULD VOID THE USER'S AUTHORITY TO OPERATE THE EQUIPMENT.

IC: 25701-BAVOTW, Model TALA

This device complies with Industry Canada licence-exempt RSS standard(s).

Operation is subject to the following two conditions:

- (1) this device may not cause interference, and
- (2) this device must accept any interference, including interference that may cause undesired operation of the device.

Le présent appareil est conforme aux CNR d'Industrie Canada applicables aux appareils radio exempts de licence. L'exploitation est autorisée aux deux conditions suivantes : (1) l'appareil ne doit pas produire de brouillage, et (2) l'utilisateur de l'appareil doit accepter tout brouillage radioélectrique subi, même si le brouillage est susceptible d'en compromettre le fonctionnement

## Environmental Conditions

During transport or storage, the temperatures should not exceed the limit value of -25 ° to 70 °C, (-13 ° to 158 °F) 0 to 90%, 700 hPa to 1060 hPa.

Battery should be removed from the device while transporting or storing. Operating Condition: your hearing instruments are designed to operate beyond the range of temperature comfortable to you, from very cold to very hot.



Manufactured by:  
Etymotic Research, Inc.  
61 Martin Lane  
Elk Grove Village, IL 60007

Distributed by:  
Lucid Hearing Holding Company, LLC  
PO BOX 535596  
Grand Prairie, TX 75053

### Transport & Storage



0 to 90%  
700 hPa to 1060 hPa

### Operational Conditions



15–90% RH non-condensing  
700hPa to 1060 hPa

IP22 Protection against dripping water at all angles  
Protection against objects  $\geq 12.5$  mm in diameter



Read Instructions

## Battery Safety



### CAUTION – Battery Safety Information

Keep hearing aids out of the reach of children or anyone who may accidentally swallow them. Never put hearing aids in your mouth for any reason.

Do not attempt to remove batteries from your device, see your hearing care professional.

Do not expose your hearing aid to heat, such as an open flame, microwave, or oven.



Disposal of Instruments  
Waste from electronic equipment must be handled according to local regulations.



WARNING: Risk of Fire and Burns. Do not Open, Crush, Heat above 60°C / 131°F or incinerate. Do not short circuit. If bulges severely, discontinue use.

Each earpiece contains a Li-ion cell  
UL1642 certified / UN38.3 certified  
IEC 62133-2:2017 certified  
Rating: 3.8V, 20mAh, 0.076Wh

Charger contains a Li-Polymer battery  
Model 601530  
Rating: 3.7V, 250mAh, 0.925Wh  
UN38.3 certified  
IEC 62133-2:2017 certified



[lucidhearing.com](https://lucidhearing.com)

©2023 Lucid Hearing Holding Company, LLC. Lucid Hearing and Tala are registered trademarks of Lucid Hearing Holding Company, LLC. LucidShape is a trademark of Lucid Hearing Holding Company, LLC. Apple and iPhone are trademarks of Apple Inc., registered in the U.S. and other countries. Android is a trademark of Google LLC. Google Play and the Google Play logo are trademarks of Google LLC. All rights reserved.