



RAZER 2.1 GAMING SPEAKERS

MODEL: RZ05-0475

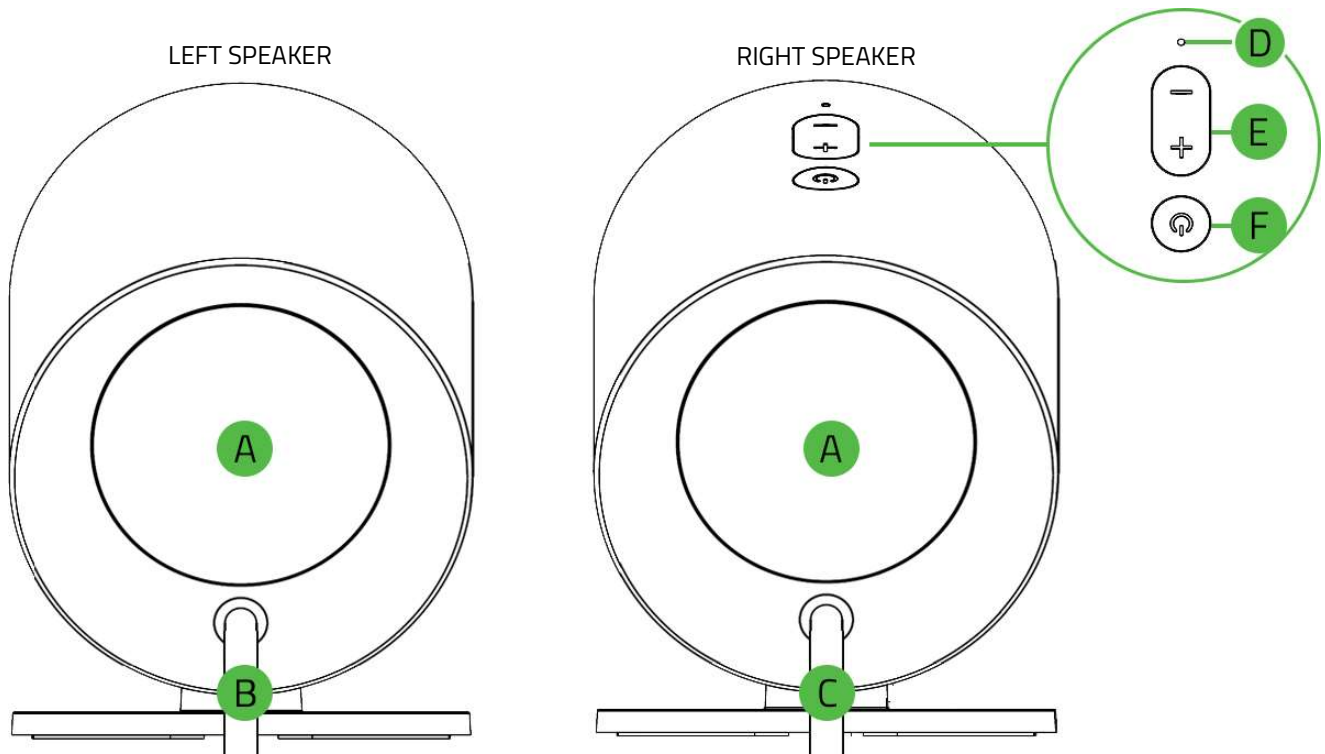
USER MANUAL

12-AUG-2022

---

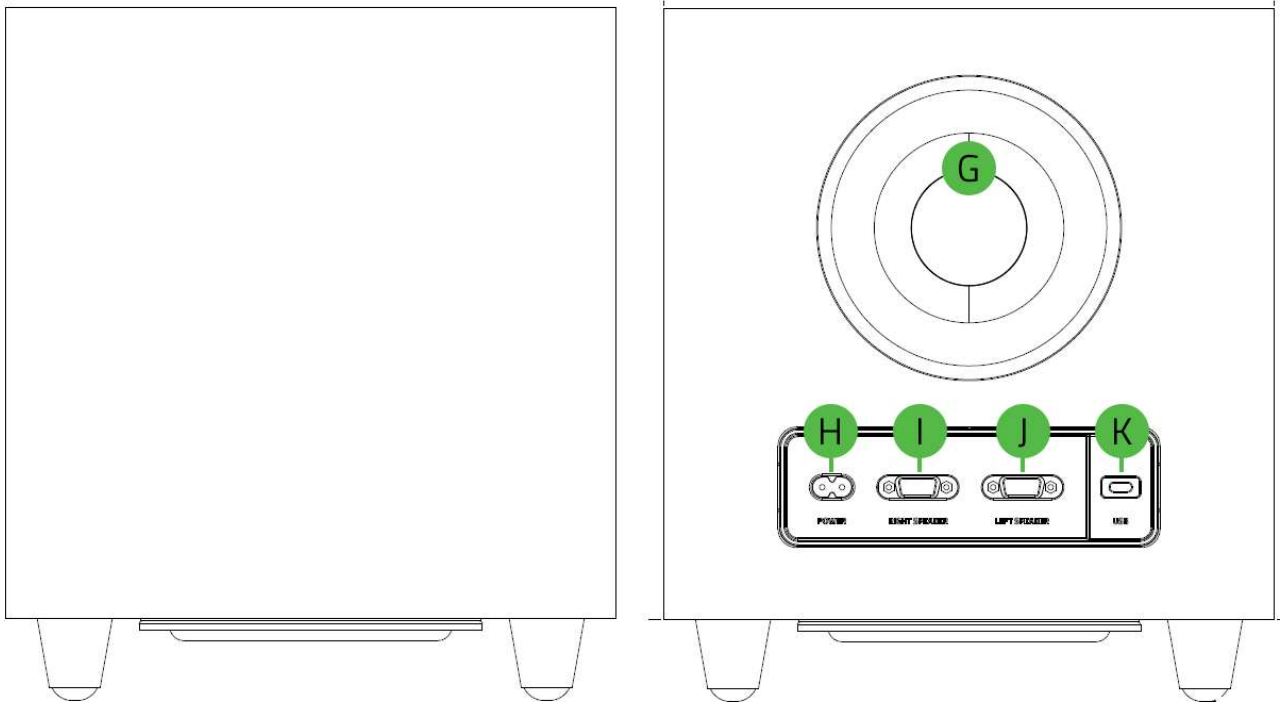
## WHAT'S INSIDE

- Razer 2.1 Gaming Speakers



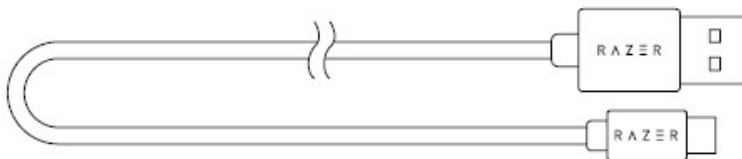
- A.** Rear-facing speaker lighting powered by Razer Chroma™ RGB
- B.** Left speaker connector
- C.** Right speaker connector
- D.** Status indicator
- E.** Volume control buttons
- F.** Power / Multi-function button

- Subwoofer

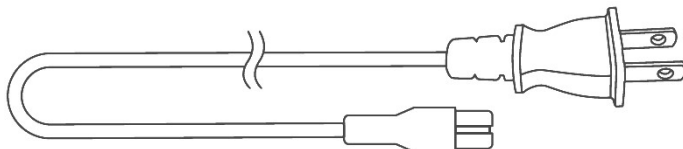


- G. Rear-facing bass port
- H. Power port
- I. Right speaker port
- J. Left speaker port
- K. USB Type C port

- USB Type A to USB Type C cable



- Regional power cords\*

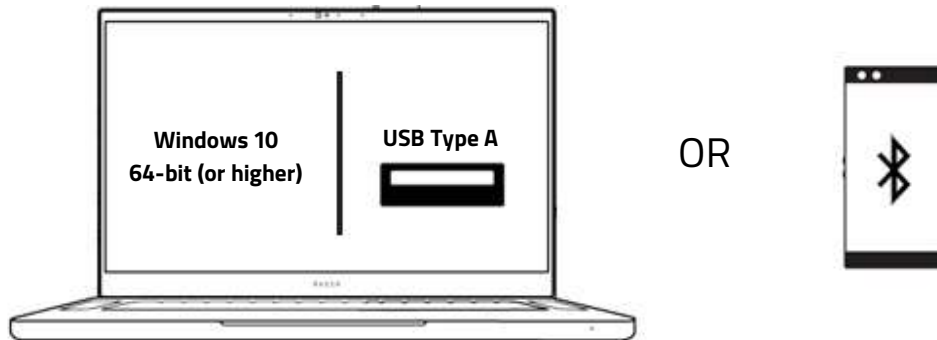


*\*May vary for specific regions.*

- Important Product Information Guide

---

## WHAT'S NEEDED

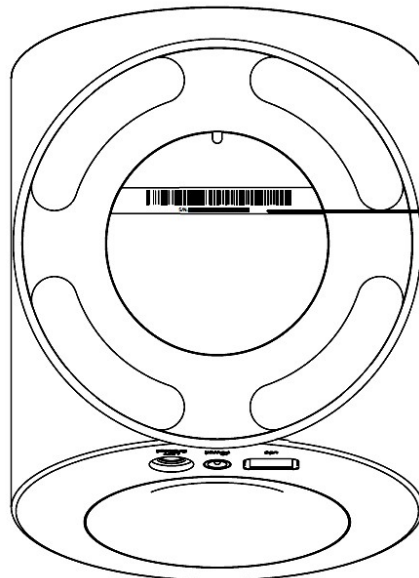


---

## LET'S GET YOU COVERED



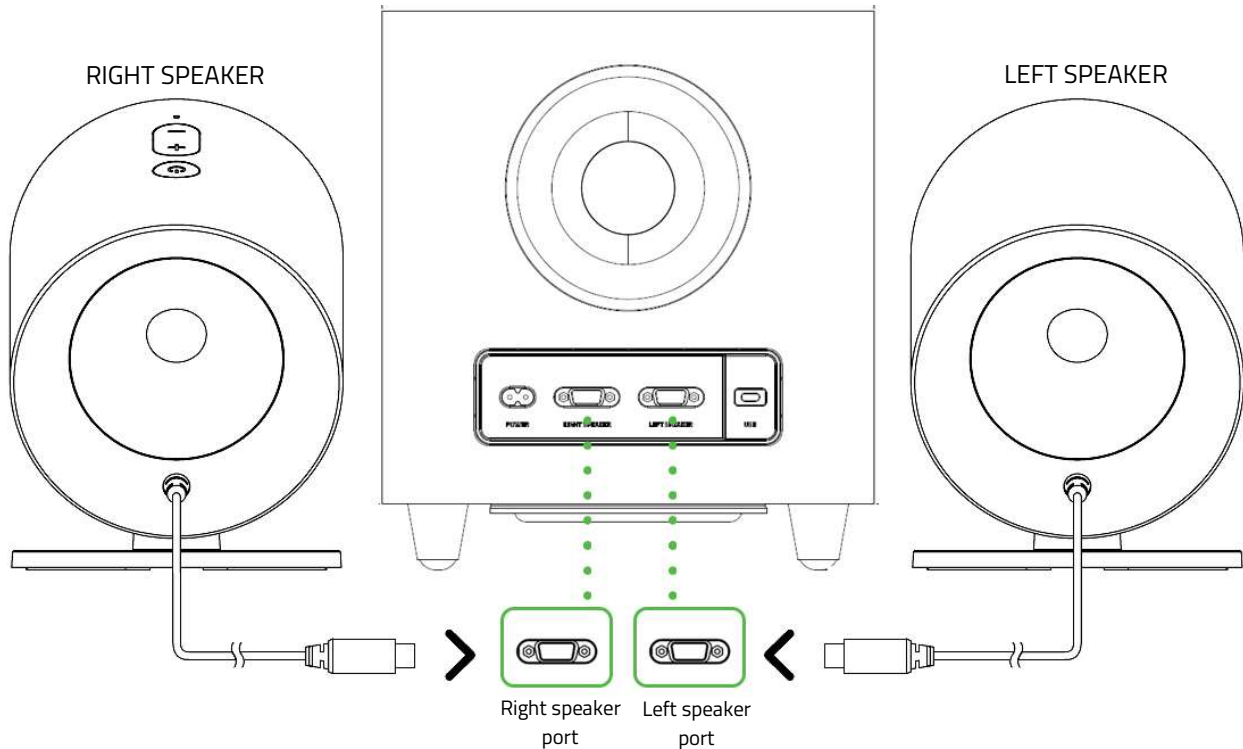
Register your product and score exclusive benefits  
[razerid.razer.com/warranty](https://www.razerid.razer.com/warranty)



*Your product's serial number can be found here.*

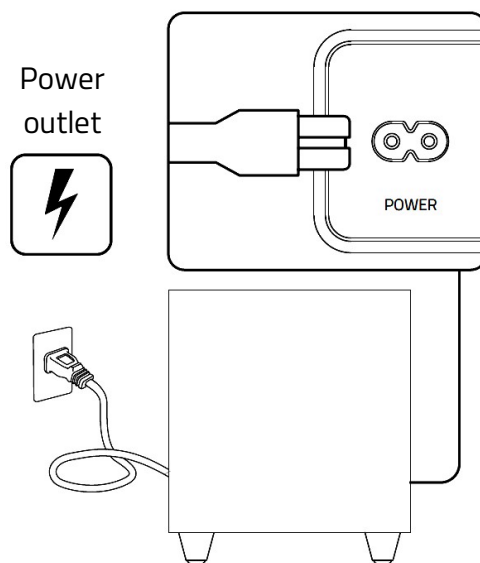
## SETTING UP YOUR RAZER 2.1 GAMING SPEAKERS

1.



- ⓘ Before plugging any connector into a speaker port, align its pins correctly to the correct port. Tighten each connector's screws, so it remains fastened in place. To unplug, loosen a connector's screws first; **DO NOT FORCEFULLY UNPLUG** a connector from the subwoofer.

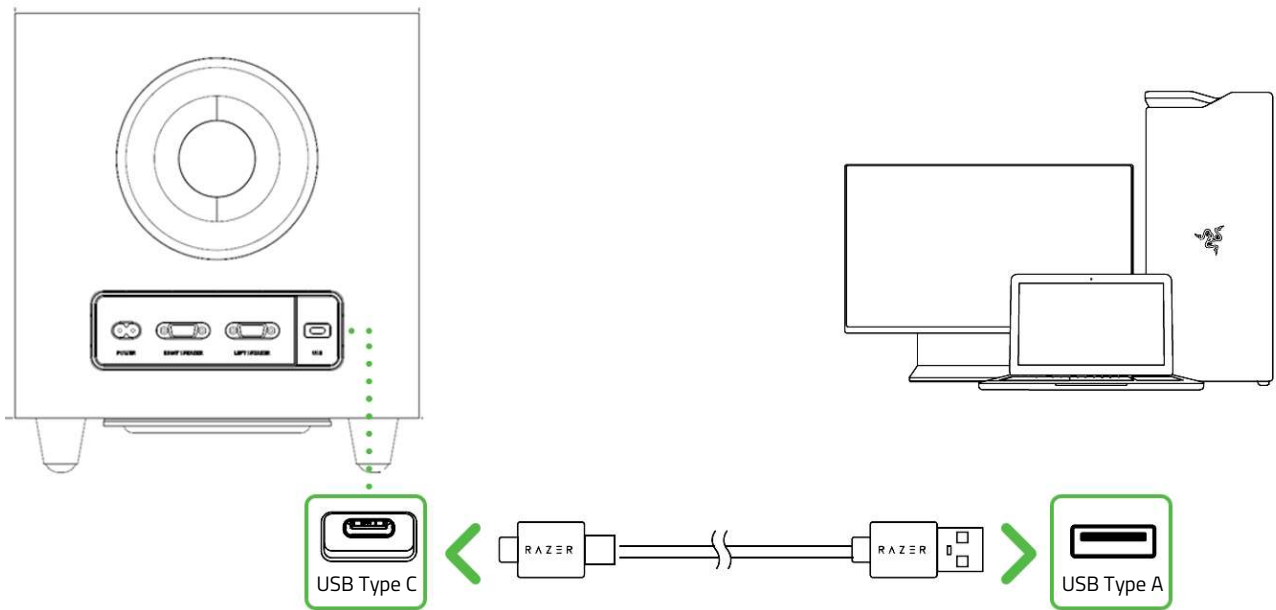
2.



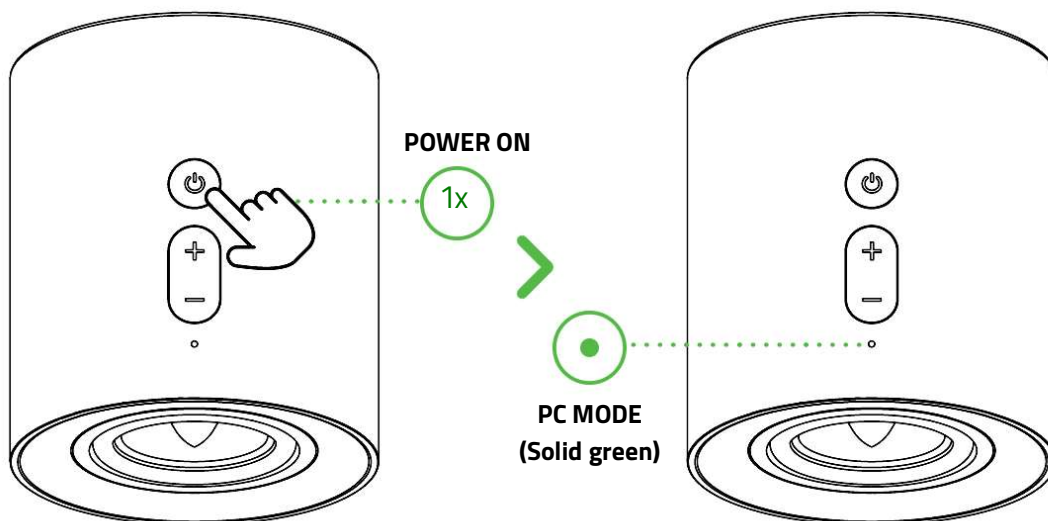
## CONNECTING TO YOUR GAMING SPEAKERS

### A. VIA PC MODE

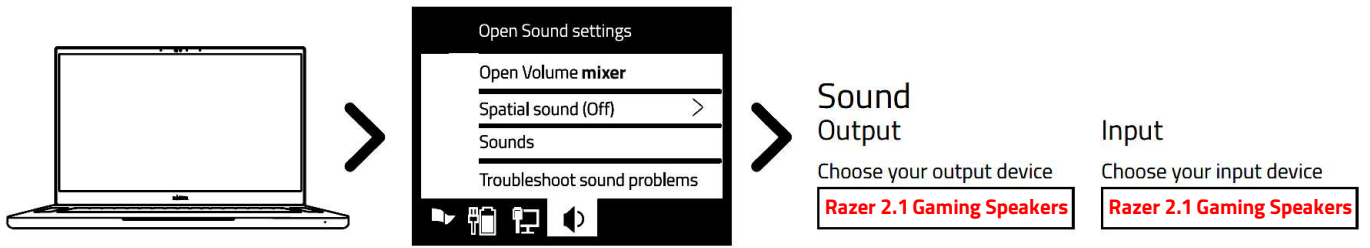
1.



2.



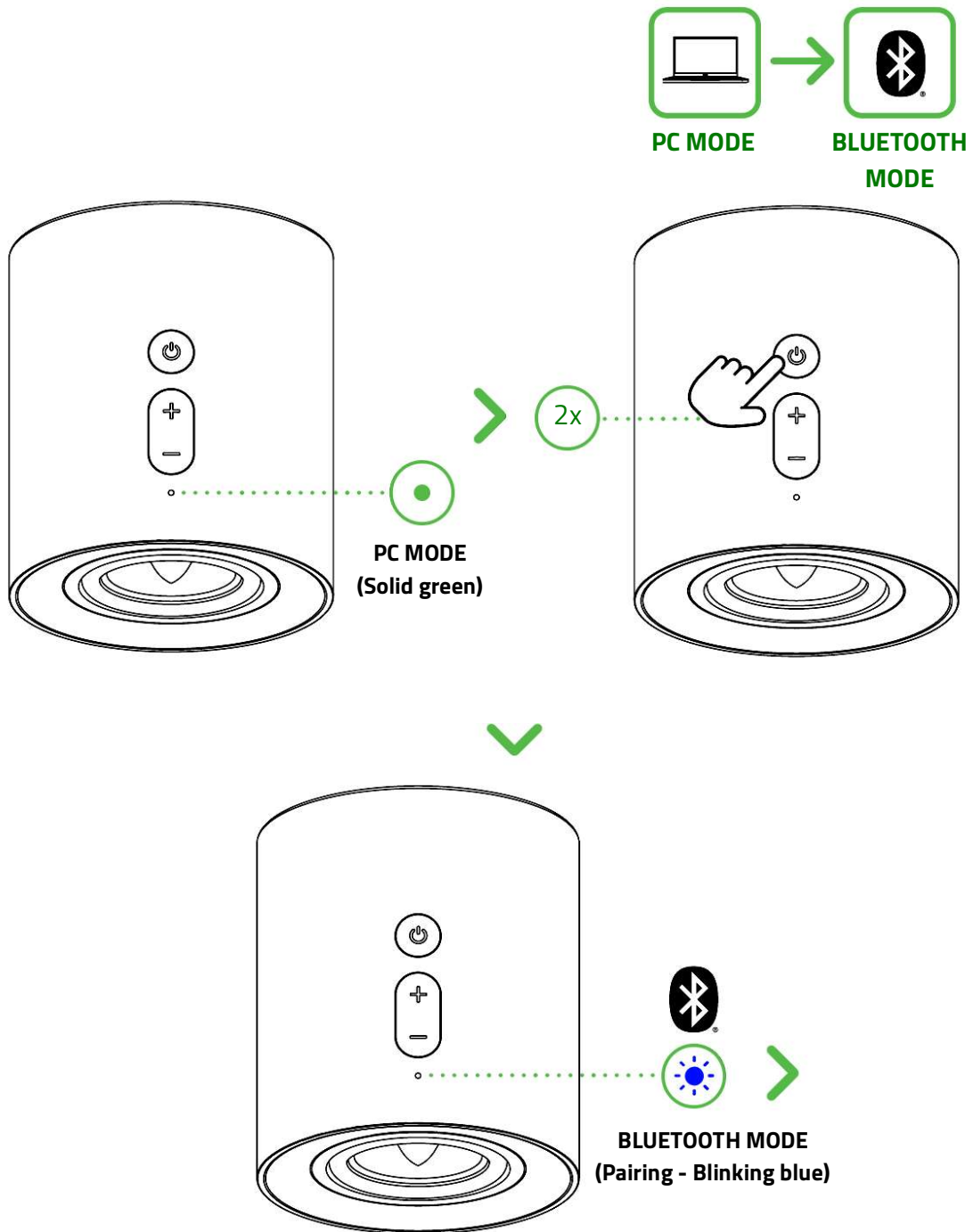
3.



*When using the gaming speakers with compatible devices, make sure to set the Razer 2.1 Gaming Speakers as its default input and output device (if applicable).*

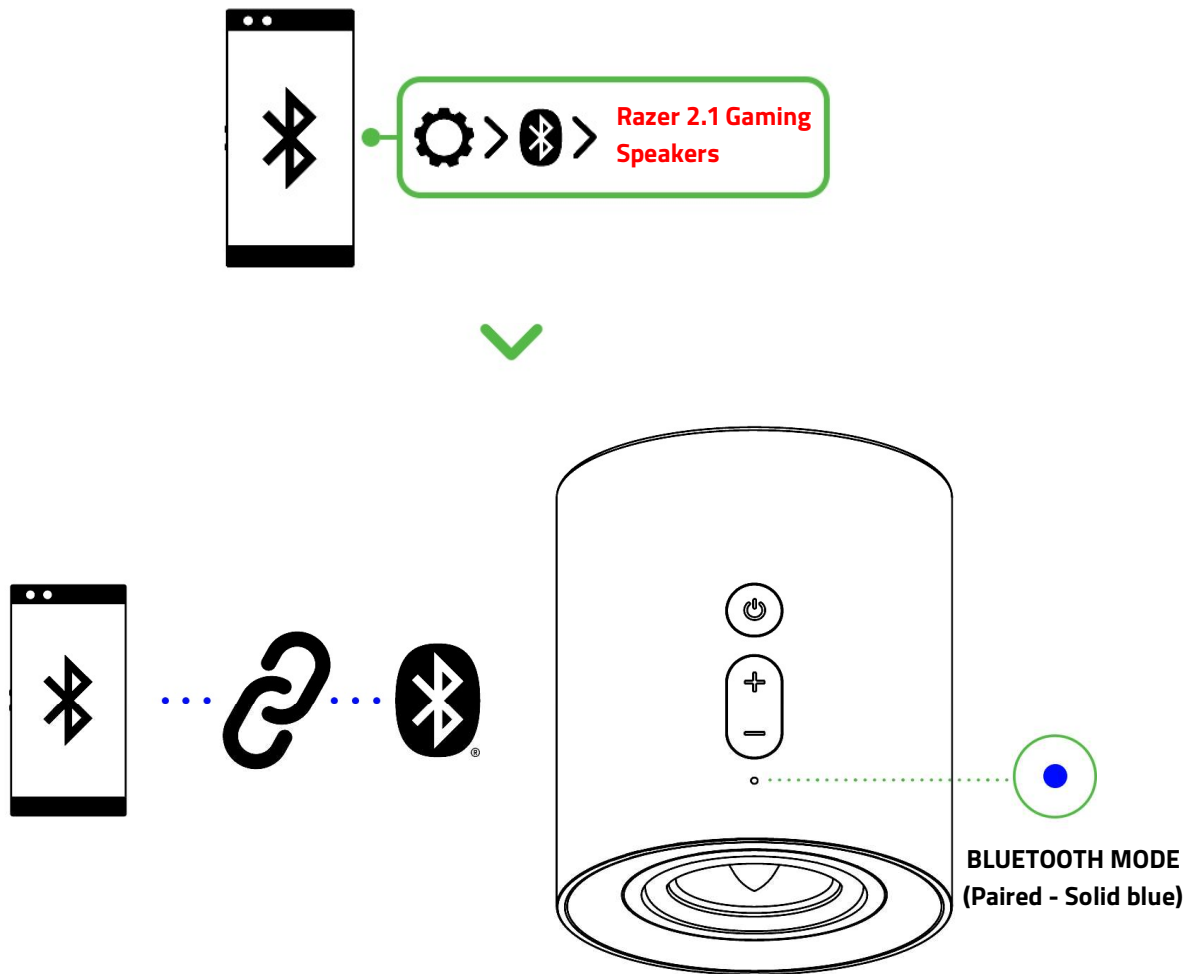
## B. VIA BLUETOOTH MODE

1.





2.



**!** *Instructions are for first-time pairing only. When connecting to your gaming speakers, remember to keep them within 1 meter of your mobile device. Once paired, your gaming speakers will automatically reconnect to your mobile device whenever you switch to Bluetooth mode.*

---

## USING YOUR GAMING SPEAKERS

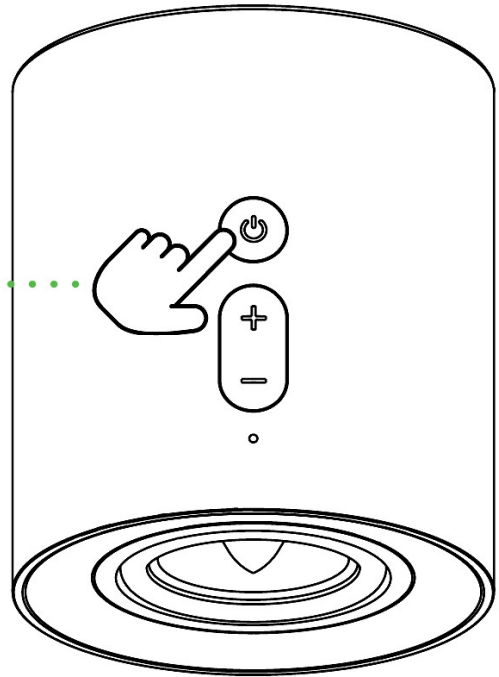
### SWITCHING BETWEEN AUDIO SOURCES



PC MODE



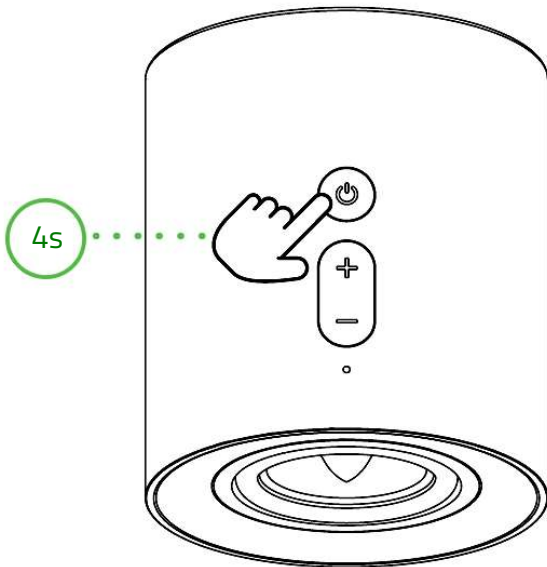
BLUETOOTH MODE



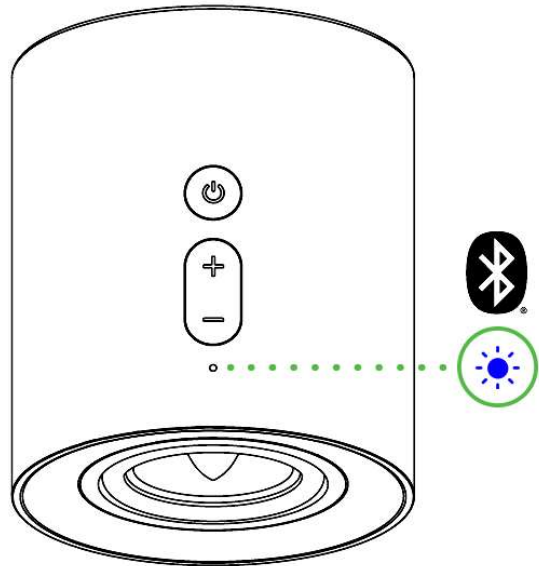
## REACTIVATING BLUETOOTH PAIRING MODE (FOR NEW DEVICES)

1.

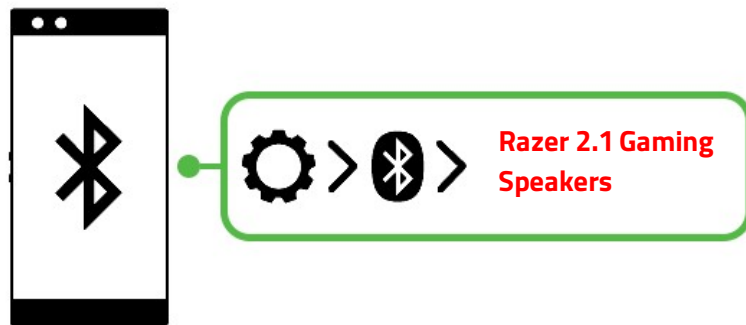
**PRESS AND HOLD**  
(From Bluetooth mode OR  
while powered off)



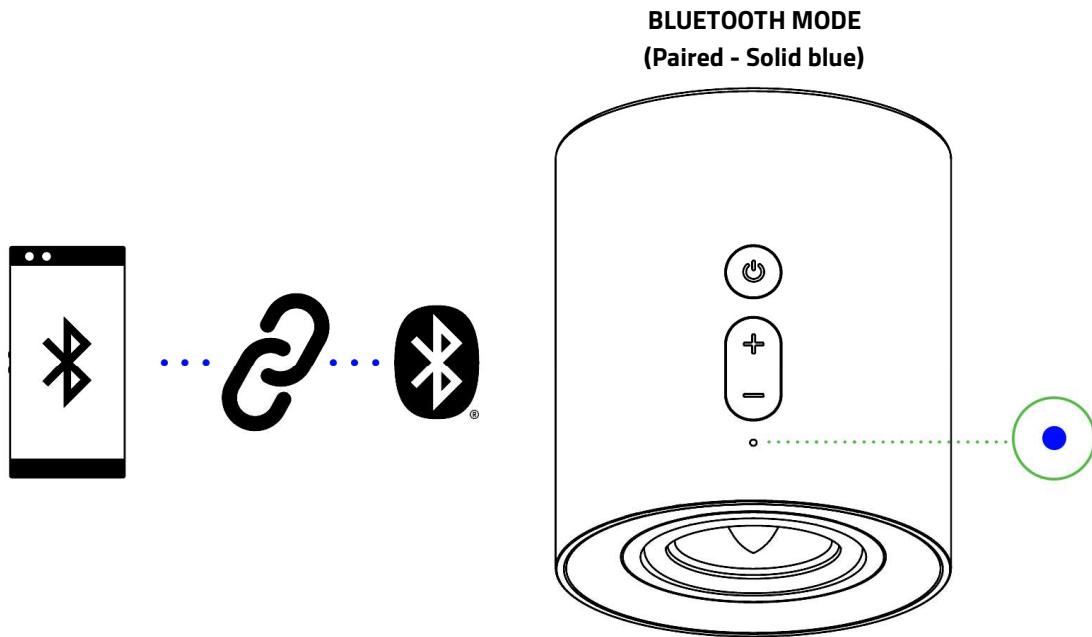
**BLUETOOTH MODE**  
(Pairing - Blinking blue)



2.



3.



## PERSONALIZE YOUR EXPERIENCE

### RAZER SYNAPSE\*

Use the Razer Synapse app to customize your speakers' lighting, personalize an EQ preset, and adjust other advanced features for a truly immersive listening experience.

**i** *Install Razer Synapse when prompted or download the installer from [razer.com/synapse](https://razer.com/synapse).*

### THX® SPATIAL AUDIO\*

Unleash the full potential of the Razer 2.1 Gaming Speakers by enabling 360° positional audio for a natural and lifelike experience through Razer Synapse.



*\*Only available on Windows® 10 64-bit (or higher).*

Find out more about your brand-new PC gaming speakers at [support.razer.com](https://support.razer.com)

---

## SAFETY AND MAINTENANCE

### SAFETY GUIDELINES

To achieve maximum safety while using your Razer 2.1 Gaming Speakers, we suggest that you adopt the following guidelines:

Should you have trouble operating the device properly and troubleshooting does not work, unplug the device and contact the Razer hotline or go to [support.razer.com](https://support.razer.com) for assistance.

Don't take apart the device, and don't attempt to operate it under abnormal current loads. Doing so will void your warranty.

Before plugging any connector into a speaker port, align its pins correctly to the correct port. Tighten each connector's screws, so it remains fastened in place. To unplug, loosen a connector's screws first; DO NOT FORCEFULLY UNPLUG a connector from the subwoofer.

Before relocating your gaming speakers, correctly unplug all cables first to avoid damaging any cable connector.

Keep the device away from liquid, humidity, or moisture. Operate the device only within the specific temperature range of 0°C (32°F) to 40°C (104°F). Should the temperature exceed this range, unplug and/or switch off the device to let the temperature stabilize to an optimal level.

Listening to excessively loud volumes over extended periods can damage your hearing. Furthermore, legislation of certain countries permits a maximum sound level of 86db to affect your hearing for 8 hours a day. We, therefore, recommend that you reduce the volume to a comfortable level when listening for prolonged periods. Please, take good care of your hearing.

### MAINTENANCE AND USE

The Razer 2.1 Gaming Speakers requires minimum maintenance to keep it in optimum condition. Once a month, we recommend you clean each speaker using a soft cloth or cotton swab to prevent dirt buildup. Don't use soap or harsh cleaning agents.

---

## LEGALESE

### **COPYRIGHT AND INTELLECTUAL PROPERTY INFORMATION**

©2022 Razer Inc. All rights reserved. Razer, the triple-headed snake logo, Razer logo, "For Gamers. By Gamers.", and "Razer Chroma" logo are trademarks or registered trademarks of Razer Inc. or affiliated companies in the United States and other countries. All other trademarks are the property of their respective owners.

The Bluetooth® word mark and logos are registered trademarks owned by Bluetooth SIG, Inc., and any use of such marks by Razer is under license.

Windows and the Windows logo are trademarks of the Microsoft group of companies.

Razer Inc. ("Razer") may have copyright, trademarks, trade secrets, patents, patent applications, or other intellectual property rights (whether registered or unregistered) concerning the product in this guide. Furnishing of this guide does not give you a license to any such copyright, trademark, patent or other intellectual property right. The Razer 2.1 Gaming Speakers (the "Product") may differ from pictures whether on packaging or otherwise. Razer assumes no responsibility for such differences or for any errors that may appear. Information contained herein is subject to change without notice.

### **LIMITED PRODUCT WARRANTY**

For the latest and current terms of the Limited Product Warranty, please visit [razer.com/warranty](https://www.razer.com/warranty).

### **LIMITATION OF LIABILITY**

Razer shall in no event be liable for any lost profits, loss of information or data, special, incidental, indirect, punitive or consequential or incidental damages, arising in any way out of distribution of, sale of, resale of, use of, or inability to use the Product. In no event shall Razer's liability exceed the retail purchase price of the Product.

### **GENERAL**

These terms shall be governed by and construed under the laws of the jurisdiction in which the Product was purchased. If any term herein is held to be invalid or unenforceable, then such term (in so far as it is invalid or unenforceable) shall be given no effect and deemed to be excluded without invalidating any of the remaining terms. Razer reserves the right to amend any term at any time without notice.

---

## REGULATORY

### FCC COMPLIANCE STATEMENTS

This device complies with Part 15 of the FCC Rules. Operation is subject to the following two conditions:

- (1) this device may not cause harmful interference, and
- (2) this device must accept any interference received, including interference that may cause undesired operation.

Any changes or modifications not expressly approved by the party responsible for compliance could void the user's authority to operate this equipment.

This equipment has been tested and found to comply with the limits for a Class B digital device, pursuant to Part 15 of the FCC Rules. These limits are designed to provide reasonable protection against harmful interference in a residential installation. This equipment generates, uses and can radiate radio frequency energy and, if not installed and used in accordance with the instructions, may cause harmful interference to radio communications.

However, there is no guarantee that interference will not occur in a particular installation.

If this equipment does cause harmful interference to radio or television reception, which can be determined by turning the equipment off and on, the user is encouraged to try to correct the interference by one or more of the following measures:

- Reorient or relocate the receiving antenna.
- Increase the separation between the equipment and receiver.
- Connect the equipment into an outlet on a circuit different from that to which the receiver is connected.
- Consult the dealer or an experienced radio/TV technician for help.

This equipment complies with FCC radiation exposure limits set forth for an uncontrolled environment. This transmitter must not be co-located or operating in conjunction with any other antenna or transmitter. This equipment should be installed and operated with minimum distance 20cm between the radiator and your body.

## ISED COMPLIANCE STATEMENTS

This Class B digital apparatus complies with Canadian ICES-003. Cet appareil numérique de la classe B est conforme à la norme NMB-003 du Canada.

This digital apparatus does not exceed the Class B limits for radio noise emissions from digital apparatus as set out in the radio interference regulations of Industry Canada. Le présent appareil numérique n'émet pas de bruits radioélectriques dépassant les limites applicables aux appareils numériques de Classe B prescrites dans le règlement sur le brouillage radioélectrique édicté par Industrie Canada.

This device contains licence-exempt transmitter(s)/receiver(s) that comply with Innovation, Science and Economic Development Canada's licence-exempt RSS(s). Operation is subject to the following two conditions:

- (1) This device may not cause interference.
- (2) This device must accept any interference, including interference that may cause undesired operation of the device.

L'émetteur/récepteur exempt de licence contenu dans le présent appareil est conforme aux CNR d'Innovation, Sciences et Développement économique Canada applicables aux appareils radio exempts de licence. L'exploitation est autorisée aux deux conditions suivantes :

- (1) L'appareil ne doit pas produire de brouillage;
- (2) L'appareil doit accepter tout brouillage radioélectrique subi, même si le brouillage est susceptible d'en compromettre le fonctionnement.

This equipment complies with ISED radiation exposure limits set forth for an uncontrolled environment. This transmitter must not be co-located or operating in conjunction with any other antenna or transmitter. This equipment should be installed and operated with a minimum distance of 20cm between the radiator and your body.

Cet équipement est conforme aux limites d'exposition aux rayonnements ISED établies pour un environnement non contrôlé. Cet émetteur ne doit pas être Co-placé ou ne fonctionnant en même temps qu'aucune autre antenne ou émetteur. Cet équipement devrait être installé et actionné avec une distance minimum de 20cm entre le radiateur et votre corps.