

#01_LTE Band 7_20M_QPSK_1_0_Left Cheek_Ch20850+21048

Communication System: LTE; Frequency: 2510 MHz; Duty Cycle: 1:1

Medium: HSL_2600_180823 Medium parameters used: $f = 2510$ MHz; $\sigma = 1.899$ S/m; $\epsilon_r = 39.161$; $\rho = 1000$ kg/m³

Ambient Temperature : 23.4 °C ; Liquid Temperature : 22.4 °C

DASY5 Configuration:

- Probe: ES3DV3 - SN3169; ConvF(4.5, 4.5, 4.5); Calibrated: 2018/5/28
- Sensor-Surface: 3mm (Mechanical Surface Detection)
- Electronics: DAE4 Sn854; Calibrated: 2018/6/14
- Phantom: SAM_Right; Type: QD000P40CD; Serial: 1884
- Measurement SW: DASY52, Version 52.10 (1); SEMCAD X Version 14.6.11 (7439)

Area Scan (91x151x1): Interpolated grid: dx=1.200 mm, dy=1.200 mm

Maximum value of SAR (interpolated) = 0.0559 W/kg

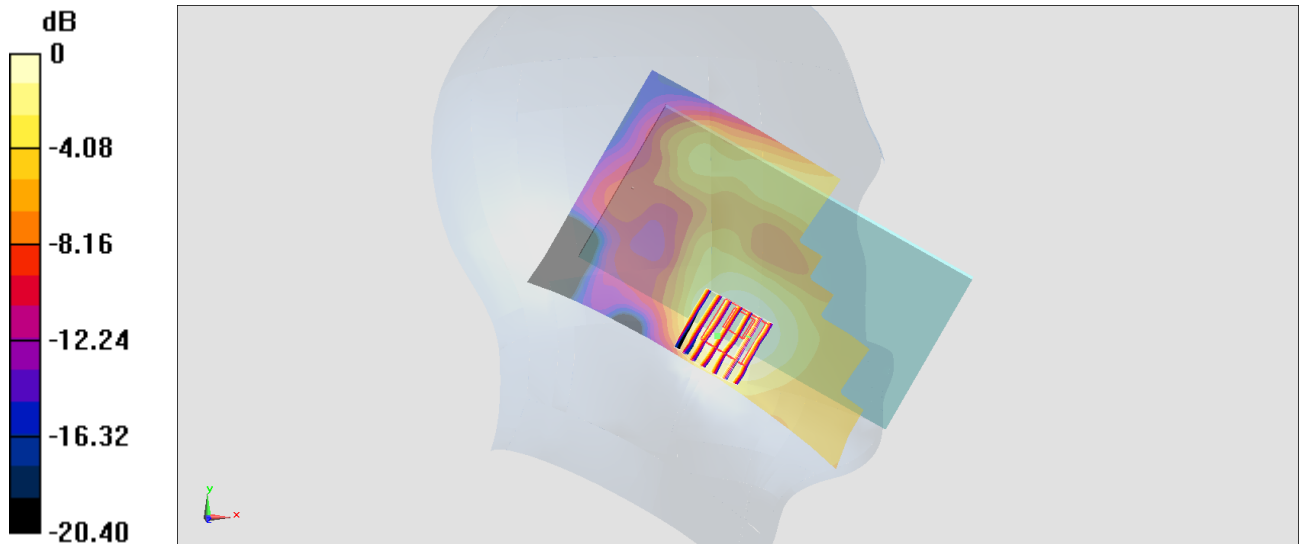
Zoom Scan (7x7x7)/Cube 0: Measurement grid: dx=5mm, dy=5mm, dz=5mm

Reference Value = 4.273 V/m; Power Drift = -0.07 dB

Peak SAR (extrapolated) = 0.0810 W/kg

SAR(1 g) = 0.045 W/kg; SAR(10 g) = 0.027 W/kg

Maximum value of SAR (measured) = 0.0544 W/kg



0 dB = 0.0544 W/kg = -12.64 dBW/kg

#02_LTE Band 5_10M_QPSK_1_0_Right Cheek_Ch20450+20549

Communication System: LTE; Frequency: 829 MHz; Duty Cycle: 1:1

Medium: HSL_850_180827 Medium parameters used: $f = 829$ MHz; $\sigma = 0.862$ S/m; $\epsilon_r = 41.512$; $\rho = 1000$ kg/m³

Ambient Temperature : 23.6 °C ; Liquid Temperature : 22.6 °C

DASY5 Configuration:

- Probe: EX3DV4 - SN7306; ConvF(9.96, 9.96, 9.96); Calibrated: 2018/7/26
- Sensor-Surface: 1.4mm (Mechanical Surface Detection)
- Electronics: DAE3 Sn577; Calibrated: 2017/9/25
- Phantom: SAM_Right; Type: QD000P40CD; Serial: 1884
- Measurement SW: DASY52, Version 52.10 (1); SEMCAD X Version 14.6.11 (7439)

Area Scan (71x121x1): Interpolated grid: dx=1.500 mm, dy=1.500 mm

Maximum value of SAR (interpolated) = 0.960 W/kg

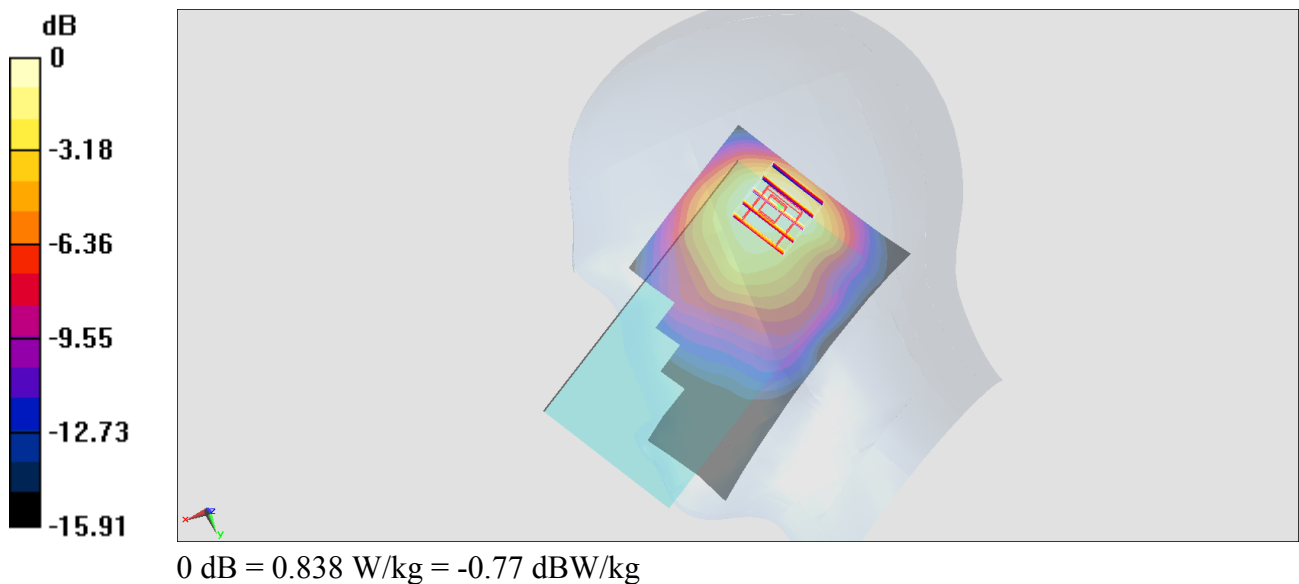
Zoom Scan (5x5x7)/Cube 0: Measurement grid: dx=8mm, dy=8mm, dz=5mm

Reference Value = 29.20 V/m; Power Drift = -0.01 dB

Peak SAR (extrapolated) = 1.03 W/kg

SAR(1 g) = 0.508 W/kg; SAR(10 g) = 0.405 W/kg

Maximum value of SAR (measured) = 0.838 W/kg



#03_LTE Band 38_20M_QPSK_1_0_Right Cheek_Ch37850+38048

Communication System: LTE ; Frequency: 2580 MHz;Duty Cycle: 1:1.59

Medium: HSL_2600_180823 Medium parameters used: $f = 2580$ MHz; $\sigma = 1.966$ S/m; $\epsilon_r = 38.918$; $\rho = 1000$ kg/m³

Ambient Temperature : 23.4 °C ; Liquid Temperature : 22.4 °C

DASY5 Configuration:

- Probe: ES3DV3 - SN3169;ConvF(4.5, 4.5, 4.5);Calibrated: 2018/5/28
- Sensor-Surface: 3mm (Mechanical Surface Detection)
- Electronics: DAE4 Sn854; Calibrated: 2018/6/14
- Phantom: SAM_Right; Type: QD000P40CD; Serial: 1884
- Measurement SW: DASY52, Version 52.10 (1);SEMCAD X Version 14.6.11 (7439)

Area Scan (91x151x1): Interpolated grid: dx=1.200 mm, dy=1.200 mm

Maximum value of SAR (interpolated) = 0.0410 W/kg

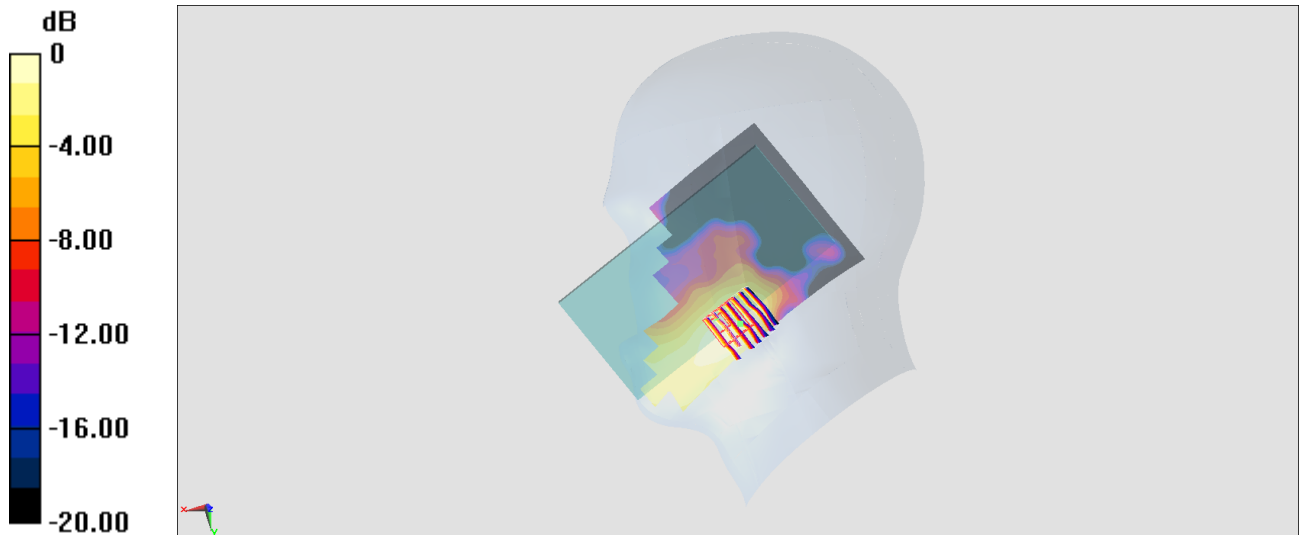
Zoom Scan (7x7x7)/Cube 0: Measurement grid: dx=5mm, dy=5mm, dz=5mm

Reference Value = 2.968 V/m; Power Drift = -0.05 dB

Peak SAR (extrapolated) = 0.0570 W/kg

SAR(1 g) = 0.027 W/kg; SAR(10 g) = 0.012 W/kg

Maximum value of SAR (measured) = 0.0401 W/kg



0 dB = 0.0401 W/kg = -13.97 dBW/kg

#04_LTE Band 7_20M_QPSK_1_0_Bottom Side_10mm_Ch20850+21048

Communication System: LTE; Frequency: 2510 MHz; Duty Cycle: 1:1

Medium: MSL_2600_180826 Medium parameters used: $f = 2510$ MHz; $\sigma = 2.076$ S/m; $\epsilon_r = 52.156$; $\rho = 1000$ kg/m³

Ambient Temperature : 23.6 °C ; Liquid Temperature : 22.6 °C

DASY5 Configuration:

- Probe: EX3DV4 - SN7306; ConvF(7.47, 7.47, 7.47); Calibrated: 2018/7/26
- Sensor-Surface: 1.4mm (Mechanical Surface Detection)
- Electronics: DAE3 Sn577; Calibrated: 2017/9/25
- Phantom: SAM-Left; Type: QD 000 P40 C; Serial: TP-1446
- Measurement SW: DASY52, Version 52.10 (1); SEMCAD X Version 14.6.11 (7439)

Area Scan (51x91x1): Interpolated grid: dx=1.200 mm, dy=1.200 mm

Maximum value of SAR (interpolated) = 0.618 W/kg

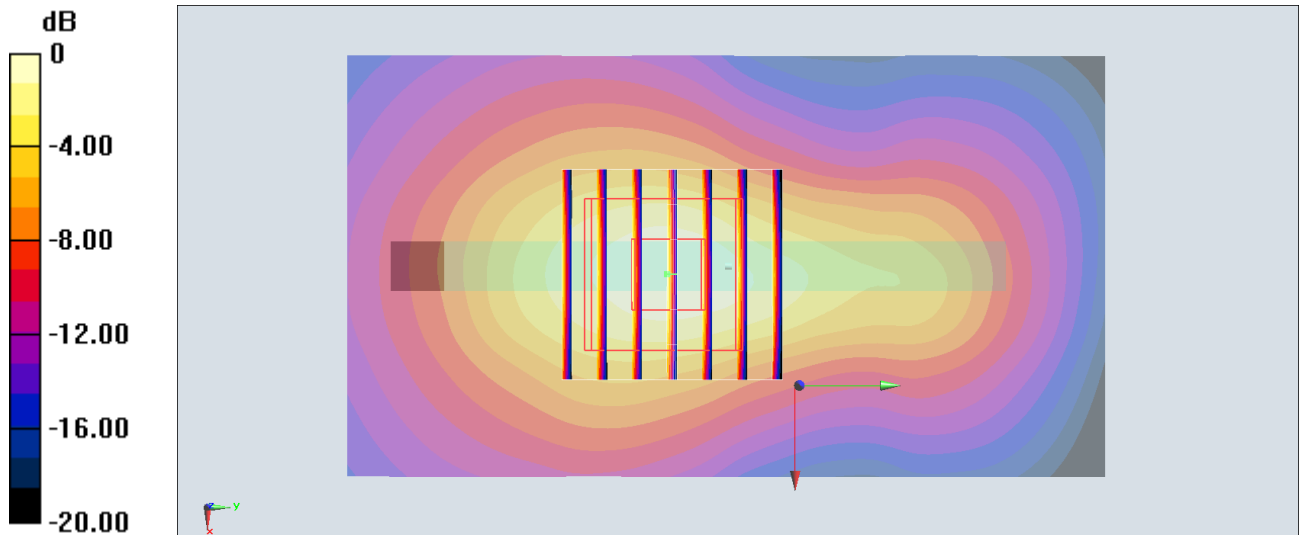
Zoom Scan (7x7x7)/Cube 0: Measurement grid: dx=5mm, dy=5mm, dz=5mm

Reference Value = 17.74 V/m; Power Drift = 0.00 dB

Peak SAR (extrapolated) = 0.764 W/kg

SAR(1 g) = 0.395 W/kg; SAR(10 g) = 0.197 W/kg

Maximum value of SAR (measured) = 0.631 W/kg



0 dB = 0.631 W/kg = -2.00 dBW/kg

#05_LTE Band 5_10M_QPSK_1_0_Back_10mm_Ch20450+20549

Communication System: LTE; Frequency: 829 MHz; Duty Cycle: 1:1

Medium: MSL_850_180827 Medium parameters used: $f = 829$ MHz; $\sigma = 0.951$ S/m; $\epsilon_r = 55.134$; $\rho = 1000$ kg/m³

Ambient Temperature : 23.6 °C ; Liquid Temperature : 22.6 °C

DASY5 Configuration:

- Probe: EX3DV4 - SN7306; ConvF(9.82, 9.82, 9.82); Calibrated: 2018/7/26
- Sensor-Surface: 1.4mm (Mechanical Surface Detection)
- Electronics: DAE3 Sn577; Calibrated: 2017/9/25
- Phantom: SAM_Right; Type: QD000P40CD; Serial: 1884
- Measurement SW: DASY52, Version 52.10 (1); SEMCAD X Version 14.6.11 (7439)

Area Scan (71x101x1): Interpolated grid: dx=1.500 mm, dy=1.500 mm

Maximum value of SAR (interpolated) = 0.574 W/kg

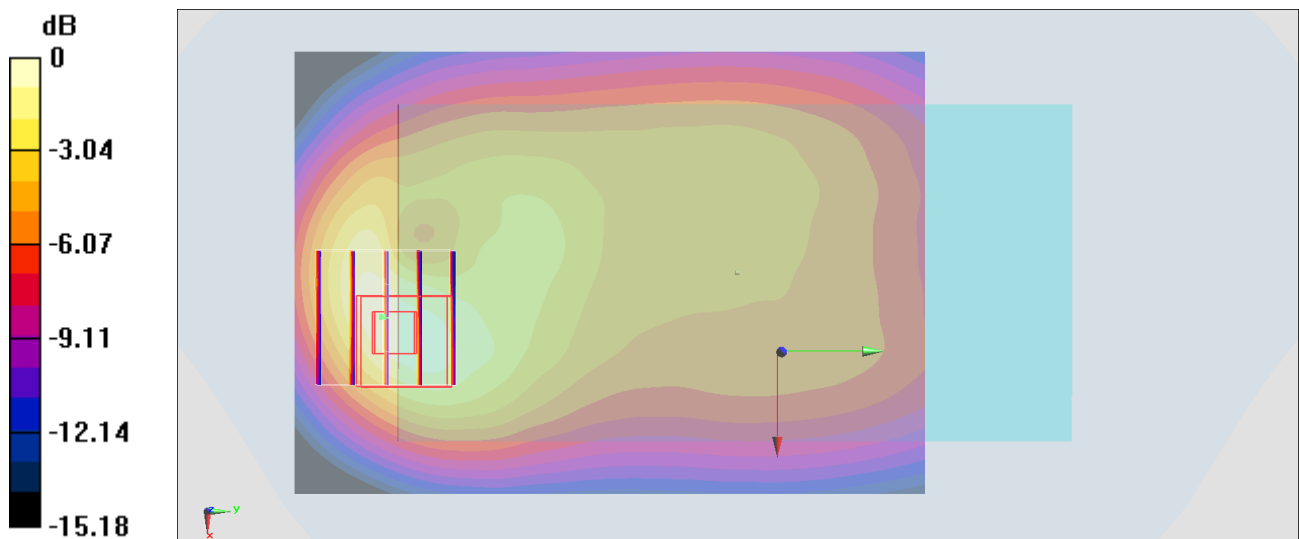
Zoom Scan (5x5x7)/Cube 0: Measurement grid: dx=8mm, dy=8mm, dz=5mm

Reference Value = 23.26 V/m; Power Drift = 0.12 dB

Peak SAR (extrapolated) = 0.726 W/kg

SAR(1 g) = 0.420 W/kg; SAR(10 g) = 0.249 W/kg

Maximum value of SAR (measured) = 0.610 W/kg



0 dB = 0.610 W/kg = -2.15 dBW/kg

#06_LTE Band 38_20M_QPSK_1_0_Bottom Side_10mm_Ch37850+38048

Communication System: LTE; Frequency: 2580 MHz; Duty Cycle: 1:1.59

Medium: MSL_2600_180826 Medium parameters used: $f = 2580$ MHz; $\sigma = 2.164$ S/m; $\epsilon_r = 51.956$; $\rho = 1000$ kg/m³

Ambient Temperature : 23.6 °C ; Liquid Temperature : 22.6 °C

DASY5 Configuration:

- Probe: ES3DV3 - SN3169; ConvF(4.27, 4.27, 4.27); Calibrated: 2018/5/28
- Sensor-Surface: 3mm (Mechanical Surface Detection)
- Electronics: DAE4 Sn854; Calibrated: 2018/6/14
- Phantom: SAM-Left; Type: QD 000 P40 C; Serial: TP-1446
- Measurement SW: DASY52, Version 52.10 (1); SEMCAD X Version 14.6.11 (7439)

Area Scan (51x91x1): Interpolated grid: dx=1.200 mm, dy=1.200 mm

Maximum value of SAR (interpolated) = 0.833 W/kg

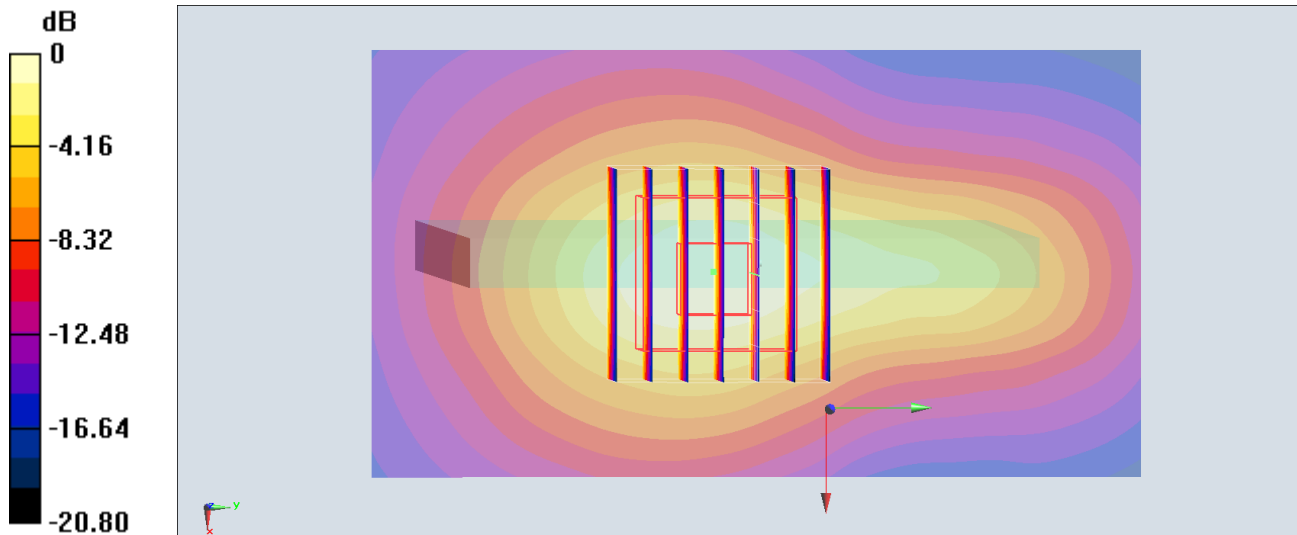
Zoom Scan (7x7x7)/Cube 0: Measurement grid: dx=5mm, dy=5mm, dz=5mm

Reference Value = 19.31 V/m; Power Drift = 0.02 dB

Peak SAR (extrapolated) = 1.30 W/kg

SAR(1 g) = 0.540 W/kg; SAR(10 g) = 0.301 W/kg

Maximum value of SAR (measured) = 0.806 W/kg



0 dB = 0.806 W/kg = -0.94 dBW/kg

#07_LTE Band 7_20M_QPSK_1_0_Front_15mm_Ch20850+21048

Communication System: LTE; Frequency: 2510 MHz; Duty Cycle: 1:1

Medium: MSL_2600_180826 Medium parameters used: $f = 2510$ MHz; $\sigma = 2.076$ S/m; $\epsilon_r = 52.156$; $\rho = 1000$ kg/m³

Ambient Temperature : 23.6 °C ; Liquid Temperature : 22.6 °C

DASY5 Configuration:

- Probe: EX3DV4 - SN7306; ConvF(7.47, 7.47, 7.47); Calibrated: 2018/7/26
- Sensor-Surface: 1.4mm (Mechanical Surface Detection)
- Electronics: DAE3 Sn577; Calibrated: 2017/9/25
- Phantom: SAM-Left; Type: QD 000 P40 C; Serial: TP-1446
- Measurement SW: DASY52, Version 52.10 (1); SEMCAD X Version 14.6.11 (7439)

Area Scan (91x81x1): Interpolated grid: dx=1.200 mm, dy=1.200 mm

Maximum value of SAR (interpolated) = 0.134 W/kg

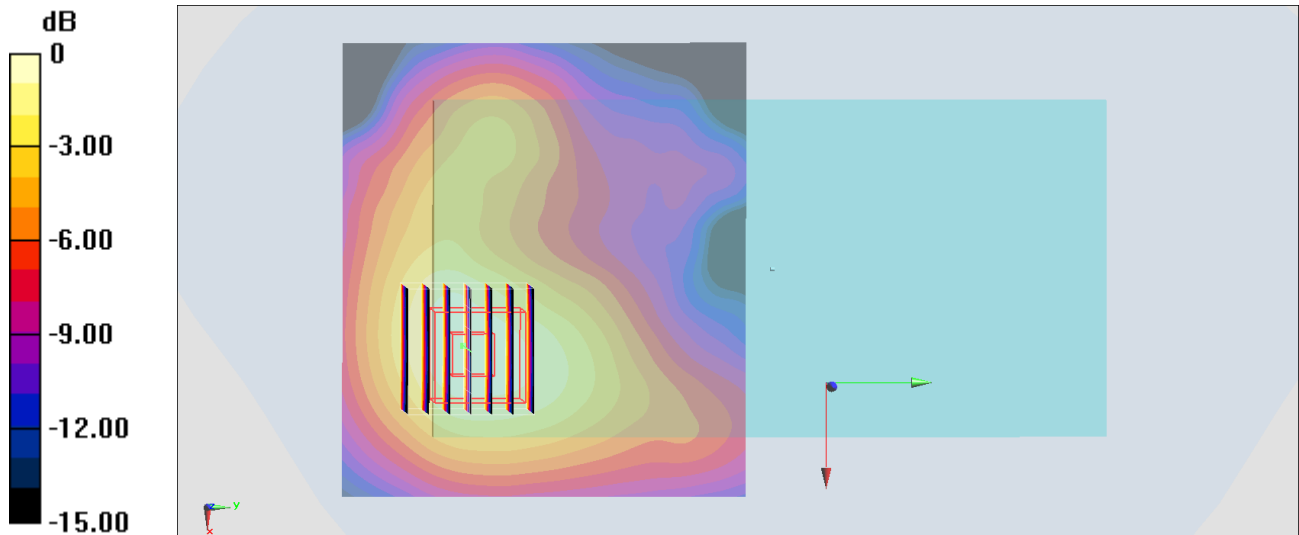
Zoom Scan (7x7x7)/Cube 0: Measurement grid: dx=5mm, dy=5mm, dz=5mm

Reference Value = 7.807 V/m; Power Drift = 0.00 dB

Peak SAR (extrapolated) = 0.157 W/kg

SAR(1 g) = 0.089 W/kg; SAR(10 g) = 0.050 W/kg

Maximum value of SAR (measured) = 0.133 W/kg



0 dB = 0.133 W/kg = -8.76 dBW/kg

#08_LTE Band 5_10M_QPSK_1_0_Front_15mm_Ch20450+20549

Communication System: LTE; Frequency: 829 MHz; Duty Cycle: 1:1

Medium: MSL_850_180827 Medium parameters used: $f = 829$ MHz; $\sigma = 0.951$ S/m; $\epsilon_r = 55.134$; $\rho = 1000$ kg/m³

Ambient Temperature : 23.6 °C ; Liquid Temperature : 22.6 °C

DASY5 Configuration:

- Probe: EX3DV4 - SN7306; ConvF(9.82, 9.82, 9.82); Calibrated: 2018/7/26
- Sensor-Surface: 1.4mm (Mechanical Surface Detection)
- Electronics: DAE3 Sn577; Calibrated: 2017/9/25
- Phantom: SAM_Right; Type: QD000P40CD; Serial: 1884
- Measurement SW: DASY52, Version 52.10 (1); SEMCAD X Version 14.6.11 (7439)

Area Scan (71x101x1): Interpolated grid: dx=1.500 mm, dy=1.500 mm

Maximum value of SAR (interpolated) = 0.228 W/kg

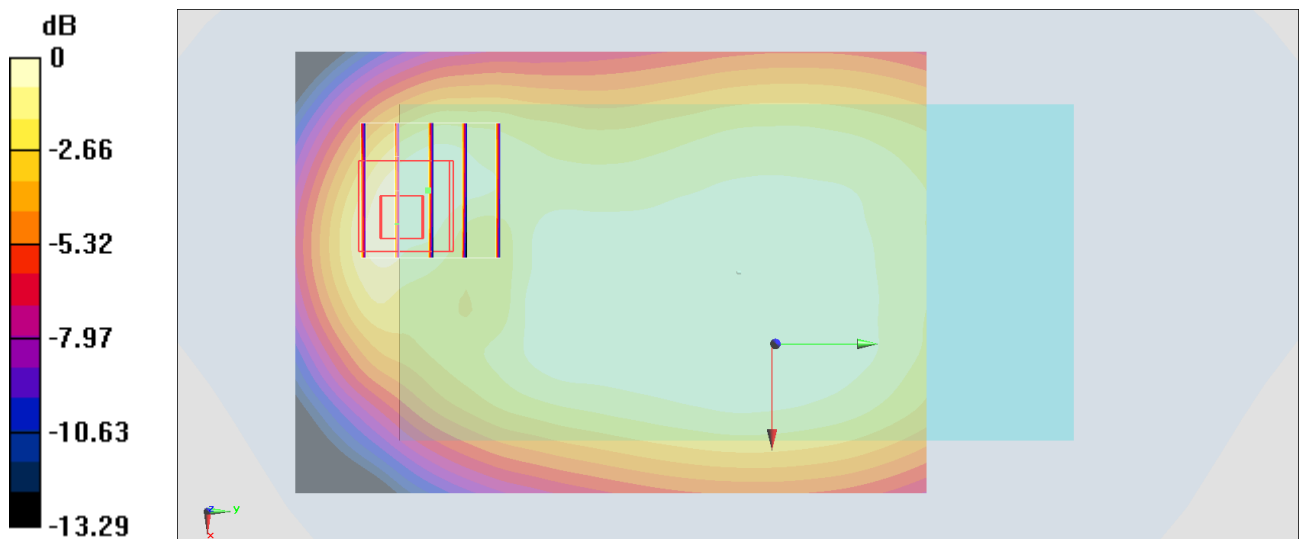
Zoom Scan (5x5x7)/Cube 0: Measurement grid: dx=8mm, dy=8mm, dz=5mm

Reference Value = 16.08 V/m; Power Drift = 0.01 dB

Peak SAR (extrapolated) = 0.254 W/kg

SAR(1 g) = 0.160 W/kg; SAR(10 g) = 0.102 W/kg

Maximum value of SAR (measured) = 0.220 W/kg



#09_LTE Band 38_20M_QPSK_1_0_Back_15mm_Ch37850+38048

Communication System: LTE; Frequency: 2580 MHz; Duty Cycle: 1:1.59

Medium: MSL_2600_180826 Medium parameters used: $f = 2580$ MHz; $\sigma = 2.164$ S/m; $\epsilon_r = 51.956$; $\rho = 1000$ kg/m³

Ambient Temperature : 23.6 °C ; Liquid Temperature : 22.6 °C

DASY5 Configuration:

- Probe: ES3DV3 - SN3169; ConvF(4.27, 4.27, 4.27); Calibrated: 2018/5/28
- Sensor-Surface: 3mm (Mechanical Surface Detection)
- Electronics: DAE4 Sn854; Calibrated: 2018/6/14
- Phantom: SAM-Left; Type: QD 000 P40 C; Serial: TP-1446
- Measurement SW: DASY52, Version 52.10 (1); SEMCAD X Version 14.6.11 (7439)

Area Scan (91x81x1): Interpolated grid: dx=1.200 mm, dy=1.200 mm

Maximum value of SAR (interpolated) = 0.152 W/kg

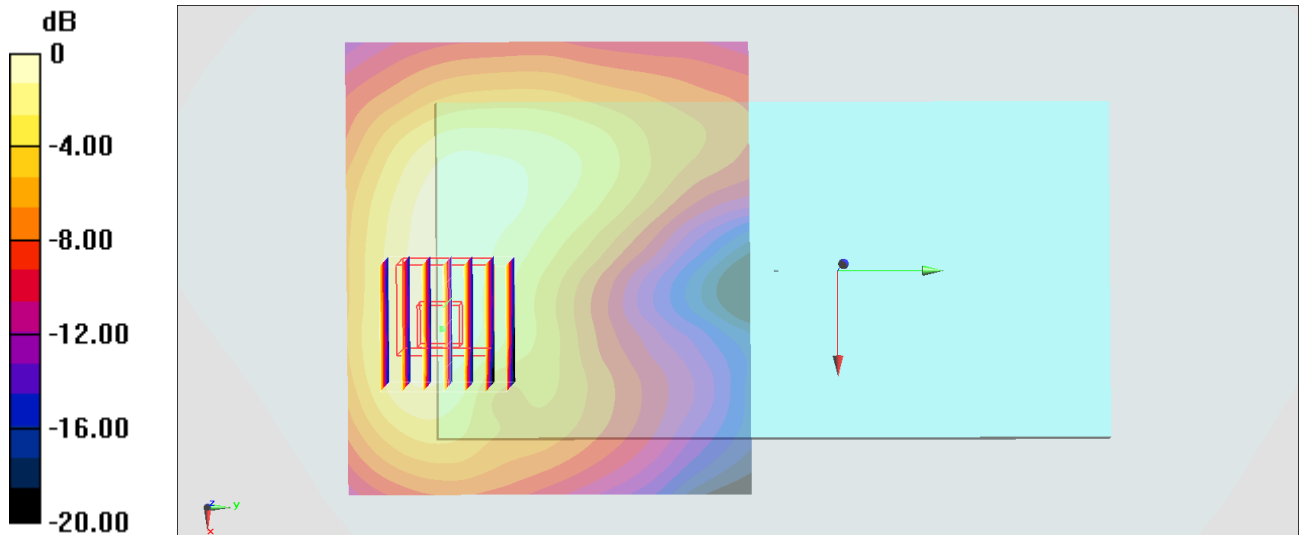
Zoom Scan (7x7x7)/Cube 0: Measurement grid: dx=5mm, dy=5mm, dz=5mm

Reference Value = 8.197 V/m; Power Drift = 0.12 dB

Peak SAR (extrapolated) = 0.251 W/kg

SAR(1 g) = 0.111 W/kg; SAR(10 g) = 0.066 W/kg

Maximum value of SAR (measured) = 0.151 W/kg



0 dB = 0.151 W/kg = -8.21 dBW/kg